

IMPORTANT PHONE NUMBERS

Street Maintenance Department..... (425) 452-7840
damaged signs, potholes, or icy streets

Police Traffic Division..... (425) 452-6940
loud noise, speeding vehicles, and illegal parking

Neighborhood Traffic Calming Program..... (425) 452-6867
pedestrian safety issues, outreach

Neighborhood Enhancement Program (NEP)..... (425) 452-6103
updates and information on transportation NEP projects

General Transportation Questions..... (425) 452-6856
[http:// www.bellevuewa.gov/transportation](http://www.bellevuewa.gov/transportation)



May 7, 2009

Bellevue, WA 98004

Subject: Traffic Concerns on 108th Ave NE and NE 26th Street

Dear [REDACTED]

Thank you for letting us know your concerns regarding traffic in your neighborhood. We have completed our field reviews, collected traffic data and reviewed the reported accident history at this location and would like to share with you our findings and recommendations.

We visited the intersection of 108th Ave NE and NE 26th St to determine if the intersection met our sight distance guidelines. Both approaches, NE 26th St and 108th Ave NE, were within our guidelines. In addition, we observed a few motorists enter and exit the intersection, and all of them were driving appropriately. Although some motorists may choose to “cut the corner”, we did not see any problems with the design or existing conditions of the intersection to warrant additional roadway striping or signing.

A speed study conducted in April of this year on 108th Ave NE and NE 26th Street recorded the average speed of motorists as 22 mph with 85% of traffic traveling at or below 26 mph. For more details on the data that was collected, please see page 2.

A speed study conducted in 2001 for NE 26th Street recorded 85% of the traffic traveling at or below 29 mph. The current speed study results show a decrease of 3 mph from the last study that was conducted. As with most streets in Bellevue, we realize that there are some motorists in your neighborhood choosing to drive faster than the speed limit. Speed humps and other physical traffic calming measures are reserved for streets where speeds are higher, with 85% of traffic traveling at or above 35 mph. These guidelines were developed with the Fire Department due to the impact physical devices have on emergency response times.

The motorists who are speeding can be addressed through the education programs described in detail in this report and the enclosed green informational sheets. If you would like to participate in one of our programs, please email me at bcasey@bellevuewa.gov or call 425-452-6867. If you would like to request enforcement for 108th Ave NE or NE 26th St, please call the Police Traffic division at 425-452-6940.

Sincerely,

Brian Casey
Neighborhood Traffic Project Manager
Transportation Department

Enclosures



General Information

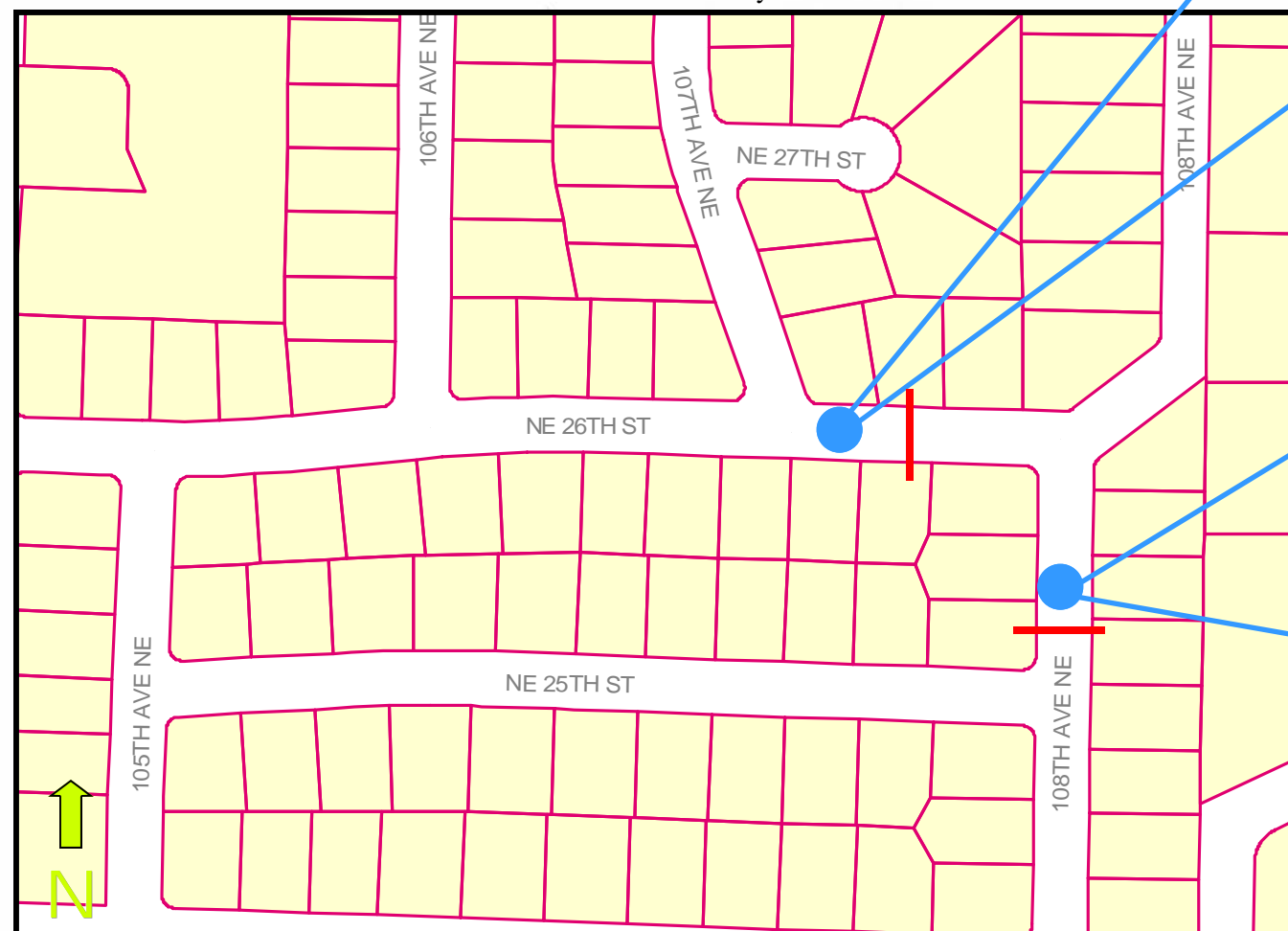
Speed Study

Street	Date Conducted	Traffic Volume Recorded	Speed Study	Speed Study	Average Speed
108th Ave NE	4/7/09	394 Vehicles (24 Hrs)	26 MPH* Northbound	26 MPH* Southbound	22 MPH
NE 26th Street	4/7/09	362 Vehicles (24 Hrs)	24 MPH* Westbound	26 MPH* Eastbound	21 MPH
NE 26th Street	8/20/01	436 Vehicles (24 Hrs)	29 MPH* Westbound	27 MPH* Eastbound	23 MPH

*85% of motorists were recorded traveling at or below this speed.

Legend

— Location of study



Recommendations



NE 26th St. facing west



NE 26th St. facing east



108th Ave NE facing north



108th Ave NE facing south

Radar Dolly—We have a portable radar sign on a dolly residents can borrow and place on their street for up to two weeks. This unit gives motorists feedback on the speed at which they are driving, encouraging them to obey the speed limit.



Radar Dolly

Neighborhood Speed Watch—One of the ways you can help to address periodic speeders is by borrowing a radar unit and participating in our Neighborhood Speed Watch Program. Using the radar unit, you can record information about vehicles you observe traveling at or above 30 mph. From this information, we will locate the registered owners of the vehicles and send a letter to them asking for their cooperation in reducing their speed.

Neighborhood Speed Reduction Program—This neighborhood-sponsored program involves lending portable signs to the neighborhood for four months, encouraging motorists to respect the neighborhood, drive responsibly and drive 25 mph.

Along with the signs, a neighborhood Pace Car program is organized with residents setting the pace for the motorists following them by driving 25 mph.



NSR Sign

Please feel free to contact me if you feel your neighborhood would benefit from participating in the programs or recommendations listed above.

