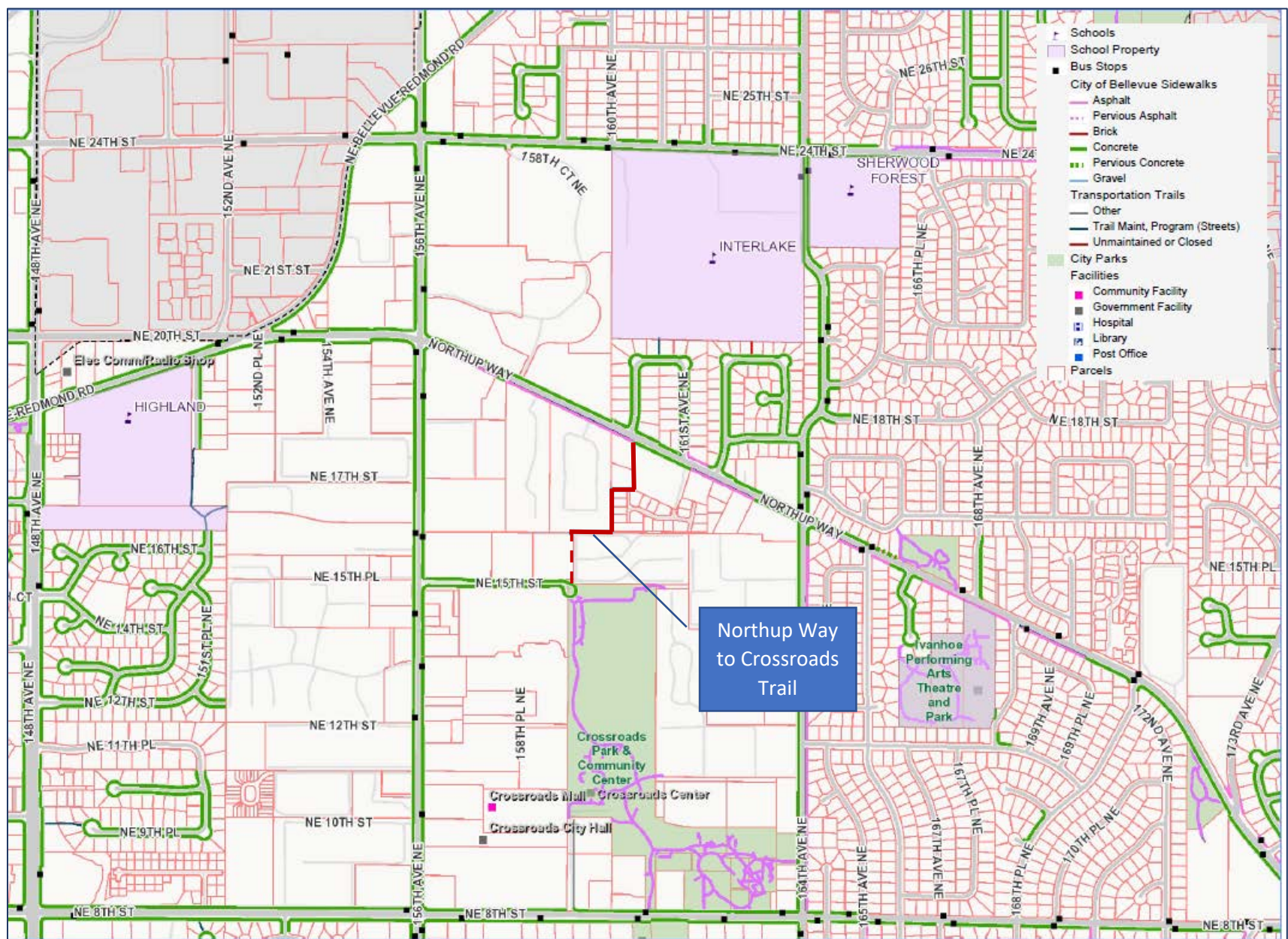


Site Context



- Trail provides an efficient walking connection between the schools and residences to the north and Crossroads Mall and Park to the south.
- Maintained by Bellevue Transportation Department Street Maintenance group
- This is one of ~70 Transportation Trails citywide

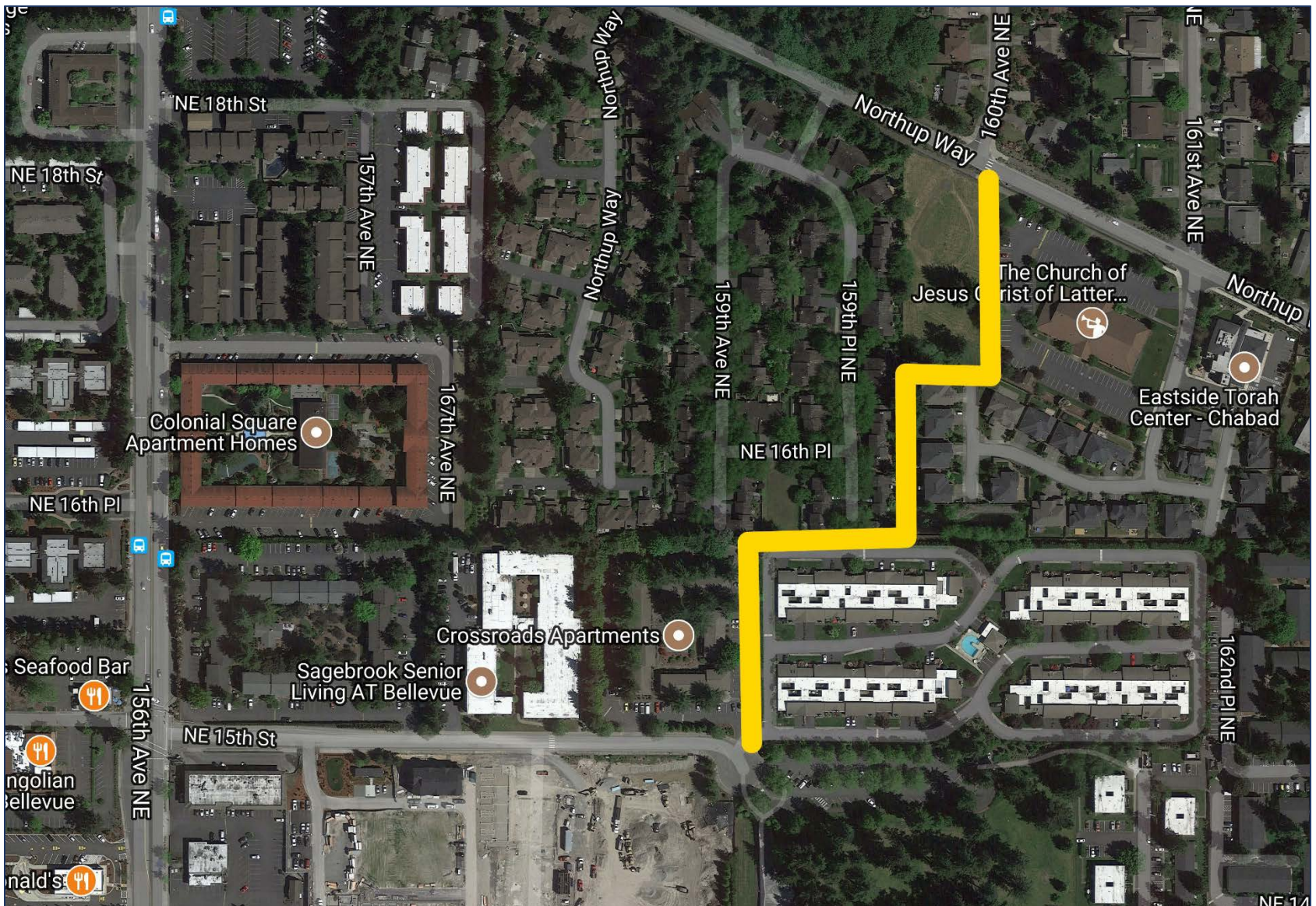


TRANSPORTATION

moving in the right direction

Northup Way to Crossroads Trail

Project Overview



Project need

- In its current condition, the trail has limited user appeal and is a source of ongoing concern for neighbors
- Parts of the trail have a narrow walking area and uneven surface that allows puddles to form
- Trail does not meet ADA standards
- New easement for trail at south end (Crossroads Apartments) opens opportunity to develop quality connection.

Anticipated improvements

- Upgrade the trail surface and widen a segment where the walkway is narrow
- Extend trail at the south end through the Crossroads Apartments parking lot and connect to NE 15th Street
- Remove several trees located in the walkway area and/or which pose a potential hazard
- Repair or replace fencing at select locations
- Install plantings at select locations
- Install lighting at several locations
- Install trash cans and enhance level of trail maintenance
- Install wayfinding signs at trail entrances (Northup Way and NE 15th Street)

See details on display boards describing each trail segment.

Schedule

- Summer 2018 – Refine project design, post updated project information on city website
- Fall 2018 – Apply for permits
- Early 2019 – Advertise project, select contractor, award project
- Spring 2019 – Construction (approximately 2 months)



TRANSPORTATION

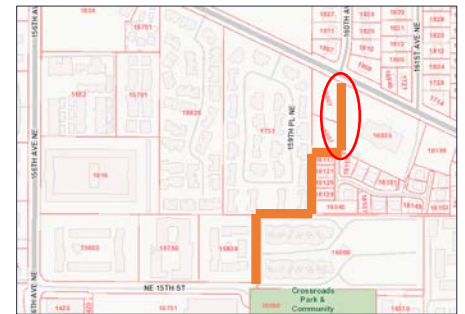
moving in the right direction

Northup Way to Crossroads Trail

Segment 1: LDS



View looking south (from Northup Way)



Current issues

- Trees along west fence line cause recurring damage (root heaving) to path

Anticipated improvements

- Remove trees that abut west side fence
- Repair pavement where damaged by tree roots
- Reconfigure entry at Northup Way to facilitate access for wheelchairs, strollers, maintenance activities



TRANSPORTATION

moving in the right direction

Northrup Way to Crossroads Trail

Segment 2: LDS/Sonora North

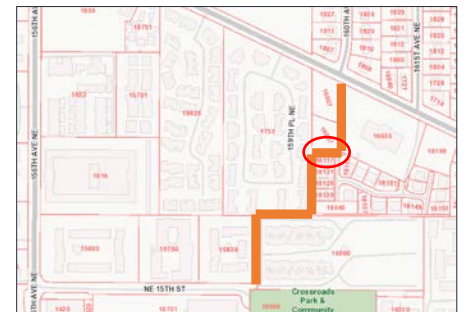


View looking west



Current issues

- Surface is uneven
- Fence along north side veers outside of city easement



Anticipated improvements

- Install asphalt paved surface
- Rebuild north side fence along edge of 10' wide easement



TRANSPORTATION

moving in the right direction

Northup Way to Crossroads Trail

Segment 3: Sonora West/Inglebrook East



View looking south (Sonora on left, Inglebrook on right)

Current issues

- Walkway is narrow, uneven
- Adjacent fences attract graffiti

Anticipated improvements

- Raise trail, install asphalt paved surface
- Rebuild, raise east (Sonora) side fence
- Remove trees at north end (details on separate display board)
- *Potential improvement:* Plant climbing vines at base of fences on east and/or west sides of trail

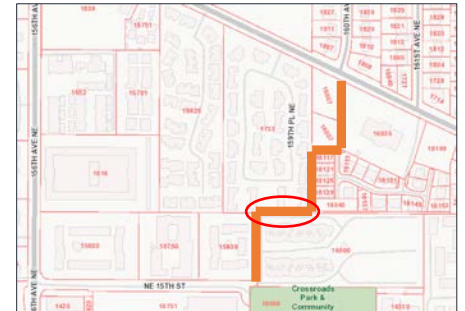


TRANSPORTATION

moving in the right direction

Northup Way to Crossroads Trail

Segment 4: Inglebrook South



View looking west (Inglebrook on right; Crossroads Condos on left)

Current issues

- Walkway narrows in certain locations
- Surface is uneven
- Adjacent fence attracts graffiti

Anticipated improvements

- Widen path area where needed to accommodate a consistent trail width
- Install asphalt paved surface

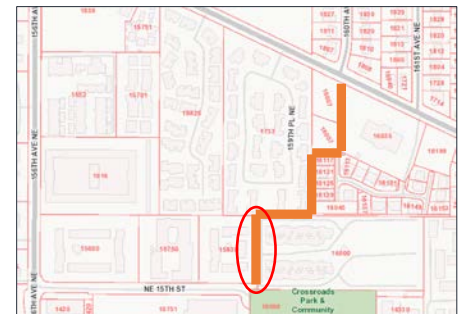


TRANSPORTATION

moving in the right direction

Northup Way to Crossroads Trail

Segment 5: Crossroads Apartments



View looking north (from NE 15th Street)

Current issues

- No designated walkway area
- Pavement is uneven, cross-slope exceeds ADA standards
- Berm and vegetation at north end impede movement
- No indication of public access

Anticipated improvements

- Replace asphalt on middle and east side of drive area to reduce cross-slope and improve surface
- Stripe and stencil a 6' wide walk area along east edge of parking lot
- At north end, extend walkway through landscaping and berm, connect to East-West (Inglebrook) segment
- At NE 15th Street trailhead, install a directional bollard (post with sign) indicating public access, connection to Northup Way.

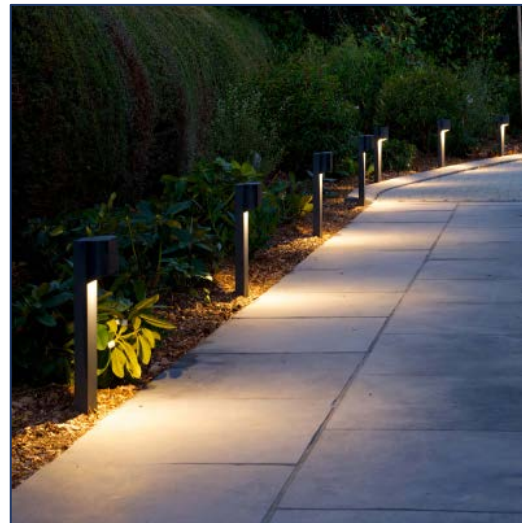


TRANSPORTATION

moving in the right direction

Northrup Way to Crossroads Trail

Maintenance and Lighting



Examples of Pedestrian Scale Trail Lighting

Current issues

- Trash accumulates
- Fences attract graffiti, vandalism
- Walkway is very dark (minimal light spills over from adjacent properties)

Anticipated improvements

- Install trash cans at corners (3 or 4 total, up from one can currently)
- Enhance maintenance
- Install pedestrian scale lighting to improve visibility and safety
 - Lights will be placed at strategic locations along trail
 - Further input and evaluation necessary for type of pole and light fixture
 - Pedestrian scale lights are typically 12-14ft tall. Bollard light fixtures (example shown in upper right image) will be considered.
 - Light will be directed onto the trail and will have minimal spill over from trail onto private property

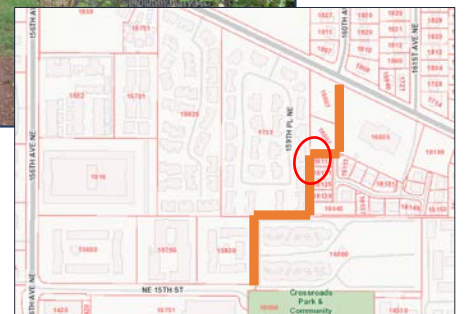


TRANSPORTATION

moving in the right direction

Northup Way to Crossroads Trail

Trees and Plantings



Trees in walkway area



Vegetation along fence line

Current issues

- Large trees present fall hazard and occupy area needed for walkway
- Blank fence surfaces attract graffiti

Anticipated improvements

- Remove trees (City is exploring options to plant replacement trees off-site)
- Install plantings where appropriate, potentially along fences (to discourage graffiti) and at trail heads



TRANSPORTATION

moving in the right direction