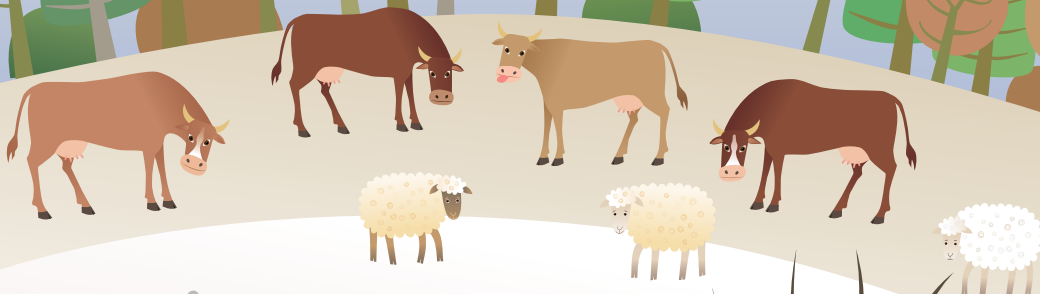


KELSEY CREEK FARM

PROMOTING LEARNING OPPORTUNITIES
IN A FARM ENVIRONMENT

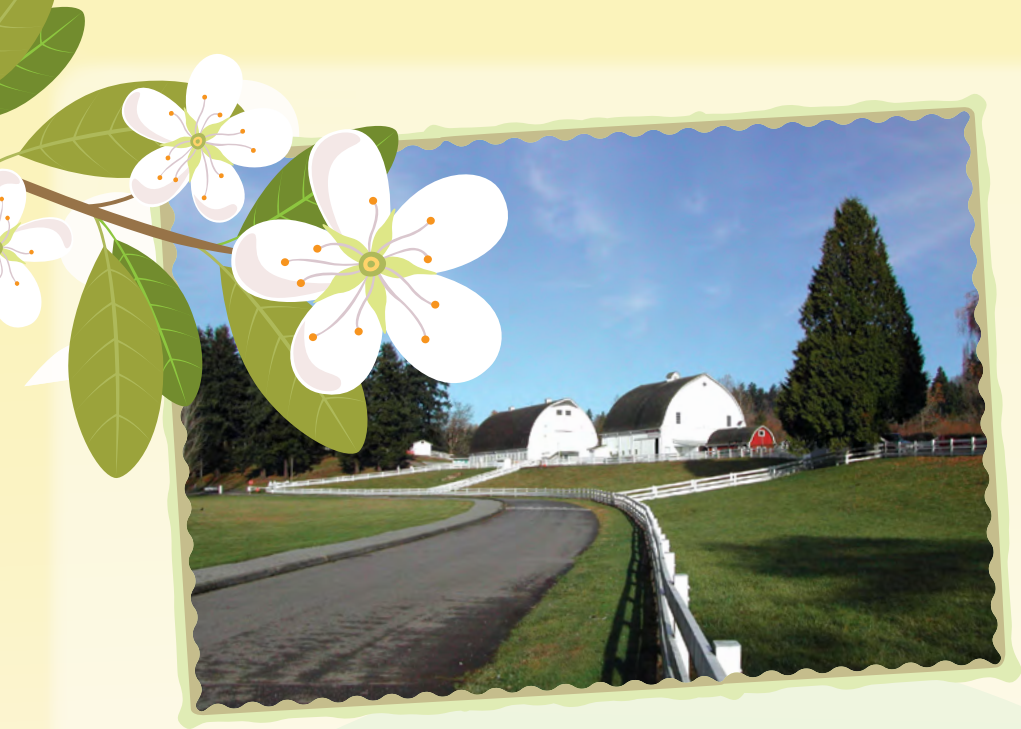


See inside
for fun
coloring!



Bellevue Parks &
Community Services

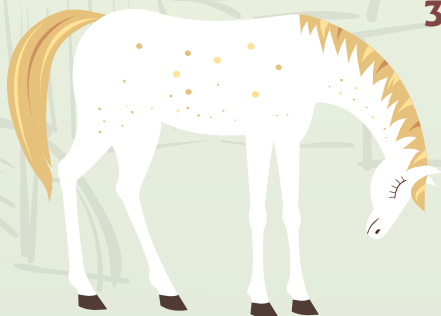
JAN-APRIL 2019



Kelsey Creek Farm provides the community an opportunity to cross the threshold of urban living into an agricultural experience, while maintaining the historic integrity of the farm, through interpretive displays and education. Our programs foster creativity and active play. The Farm's two historical barns sit prominently on the crest of a hill. There is no entrance fee; however, we welcome and appreciate your donations.

When visiting any of Bellevue's parks, all dogs and other pets must be kept on a leash. Out of consideration for our farm animals' health and wellbeing, please observe all posted signs prohibiting pets from the barnyard.

**FARM ANIMALS IN THE
PASTURES DAILY FROM 9:30AM TO
3:30PM, 365 DAYS A YEAR**



CHILD AND FAMILY ACTIVITIES



Note: Preregistration required for all activities.

FUN ON THE FARM

Join Mrs. Kandi for a fun time as an adult/child team. Each week we will have a different theme enhanced with sensory activities based on a farm topic or animal. We will cook, play, create, walk on the farm, ride a pony, pet a chicken, hug a bunny, and have lots of fun.

Ages: 2-5

Hours/Dates: 10:30-Noon

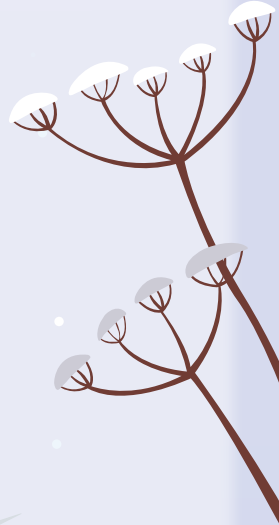
Wednesdays:

Jan 9-30	#1905411 *
Feb 6-27 (no class on the 20th)	#1905412
March 6-27	#1905413 *
April 3-24 (no class April 10)	#1905414
May 1-22	#1905415 *

Thursdays:

Jan 10-31	#1905416 *
Feb 7-28 (no class on the 21st)	#1905417
March 7-28	#1905418 *
April 4-25 (no class on the 11th)	#1905419
May 2-23	#1905420 *

Fees: \$80 (R) \$96 (N) (4-day class) *indicated 4 classes
\$60 (R) \$72 (N) (3-day class)



STORY TIME

Come enjoy story time in a farm setting. Each story session will involve a different farm animal related theme and include a visit by one of our resident farm animals. The stories will come alive for your child as they see the featured animal characters from the stories in real life. Pre-registration not required. Children must be accompanied by an adult. Space is limited. Doors close when the program begins.

Ages: 3-6

Hours/Dates: 10:30-11am

Fridays:

Jan 11	#1908461	March 8	#1908465
Jan 18	#1908462	March 22	#1908466
Feb 1	#1908463	April 5	#1908467
Feb 15	#1908464	April 19	#1908468

Fees: Free



KELSEY CREEK FARM SCHOOL

Kelsey Creek Farm offers unique learning opportunities in a farm environment. Children will learn about farming, fiber arts, local history, and regional ecology. Learn how chickens lay eggs, how cows digest grass, and how to do assorted barn chores. Each class will focus on animal handling techniques and many hands-on activities.

Ages: 8-11

Hours/Dates: 1:30-4pm

Wednesdays:

Jan 16-Feb 13

#1904901

Feb 27-March 27

#1904902

Fees: \$125 (R) \$150 (N)

FARMER FOR A DAY

Come join us at Kelsey Creek Farm for a fun day off school and become a farmer for a day! Experience farm life firsthand as you go behind the scenes and see what it really takes to be a farmer. Help us collect eggs, make animals' meals, clean out stalls, brush a pony and much, much more! Bring a lunch, snack and drink.

Ages: 8-10

Hours/Dates: 9:30-3pm

Monday, Jan 28

#1906031

Friday, March 15

#1906032

Fees: \$45 (R) \$54 (N)

LITTLE FARMERS / 3 CLASSES

Join Farmer Jayne in a special hands-on opportunity to experience farm life with your toddler. Children team up with a parent/adult to actively participate in animal care, barn chores, a pony ride, and baking. Curriculum is integrated with seasonal themes, arts and crafts, stories and games. One adult per child. Additional adult, \$10 per session, Drop-in extra adult, \$5. Underage siblings welcome in front/back pack.

Ages: 2-3

Hours/Dates: 10-11:30am

Fridays, Feb 1-15

#1907781

Mondays, Feb 4-25 (no class Feb.18)

#1907782

Tuesdays, Feb 5-26 (no class Feb. 19)

#1907783

Wednesdays, Feb 6-27 (no class Feb. 20)

#1907784

Fridays, March 1-15

#1907785

Mondays, March 4-18

#1907786

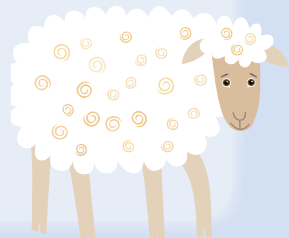
Tuesdays, March 5-19

#1907787

Wednesdays, March 6-20

#1907788

Fees: \$60 (R) \$72 (N)



FARM EXPLORERS / 3 CLASSES

Join Farmer Jayne for a hands-on farm adventure featuring animal care, barn chores, a pony ride, and baking. This drop-off program is designed for the independent 3 to 5-year-old. Curriculum is integrated with seasonal themes, arts, and crafts, stories and games. Children must be potty trained. Bring a lunch/drink. Snack will be provided.

Ages: 3-5

Hours/Dates: 10-12:30pm

Thursday, Feb 7-28, (No class Feb. 21) #1907921

Wednesday, March 7-21 #1907922

Fees: \$68 (R) \$81 (N)

NATURALIST FOR A DAY

Spend your day off from school exploring Kelsey Creek's wetlands and Douglas-fir forests. Learn about the local ecosystem, look for wildlife, and start your own nature journal! We'll study trees, do art projects, and play outside. Bring a lunch, snack and drink.

Ages: 8-10

Hours/Dates: 9:30-3pm

Monday, March 18 #1900802

Fees: \$45 (R) \$54 (N)

LITTLE FARMERS / 2 CLASSES

Join Farmer Jayne in a special hands-on opportunity to experience farm life with your toddler. Children team up with a parent/adult to actively participate in animal care, barn chores, and baking. Curriculum is integrated with seasonal themes, arts and crafts, stories and games. One adult per child. Additional adult, \$10 per session, Drop-in extra adult, \$5. Underage siblings welcome in front/back pack.

Ages: 2-3

Hours/Dates: 10-11:30am

Monday, April 15-22 #1907871

Tuesday, April 16-23 #1907872

Wednesday, April 17-24 #1907873

Fees: \$40 (R) \$48 (N)



PRIVATE HORSEBACK RIDING LESSONS

Kelsey Creek Farm's private riding lessons allow your child to work one-on-one with our riding instructor to deepen your child's understanding of horsemanship and develop foundational riding skills. Each one-hour lesson including brushing and saddling your pony, groundwork, and riding time. Skills taught include mounting, steering, backing, proper balance, and posting at the trot.

Ages: 4-6

Hours/Dates: March 30-April 13

Saturday, 1-2pm #1908421

Saturday, 2-3pm #1908422

Saturday, 3-4pm #1908423

Fees: \$165 (R) \$190 (N)

FARM EXPLORERS / 2 CLASSES

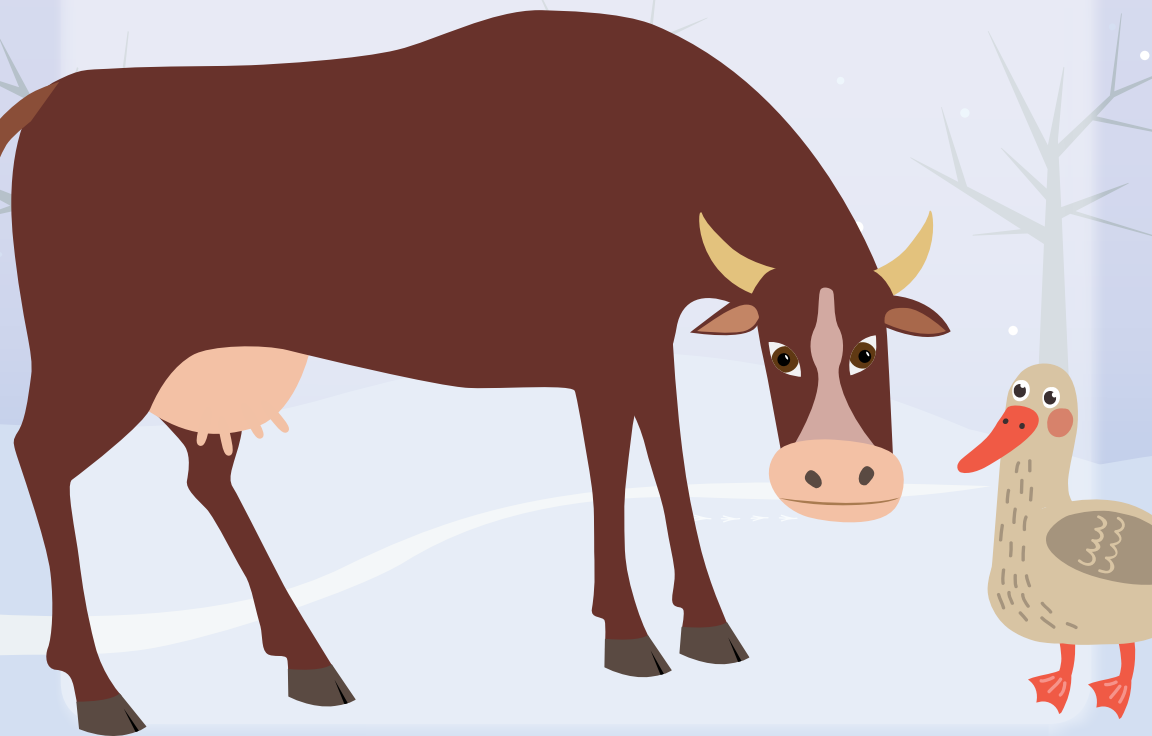
Join Farmer Jayne for a hands-on farm adventure featuring animal care, barn chores, and baking. This drop-off program is designed for the independent 3 to 5-year-old. Curriculum is integrated with seasonal themes, arts, and crafts, stories and games. Children must be potty trained. Bring a lunch/drink. Snack will be provided.

Ages: 3-5

Hours/Dates: 10-12:30pm

Thursday, April 18-25 #1900791

Fees: \$46 (R) \$54 (N)



SATURDAY ACTIVITIES

WINTER ON THE FARM

Adult and child will team together to find out how farm animals survive the chilly winter months. Meet our fluffy and furry animals on a touch-and-tell walk. Come in and warm up as we continue our fun activities in the barn. Adult/child teams only. A team is one child and one adult.

Ages: 3-6

Hours/Dates: 10-11:30am

Saturday, Jan 12 #1900515

Fees: \$25 (R) \$30 (N)

FELTED LANDSCAPES

View different landscapes and become inspired to create your own. We will visit our resident Kelsey Creek Farm sheep, view different landscape pictures, and then use wool roving to make your own felted landscape in a plastic bag. Each child will take home a finished landscape wall hanging.

Ages: 6-11

Hours/Dates: 10-Noon

Saturday, Jan 26 #19006011

Saturday, March 2 #19060412

Fees: \$46 (R) \$54 (N)

COCOA AND CANVAS

Join your child for a fun afternoon on the farm! You and your child will each create a farm-themed painting to take home with you. Cocoa, cookies, and all art supplies will be provided. Painting will be inside the heated barn but come dressed to get messy. Each registration fee includes one child and one adult.

Ages: 6-10

Hours/Dates: 1-2:30pm

Saturday, Feb 2 #1980541

Saturday, March 9 #1980542

Fees: \$60 (R) \$72 (N)



VALENTINE FUN

Adult and child will team together to create beautiful Valentine cards, share their love with a farm animal and participate in some fun holiday activities. Adult/child teams only. A team is one child and one adult.

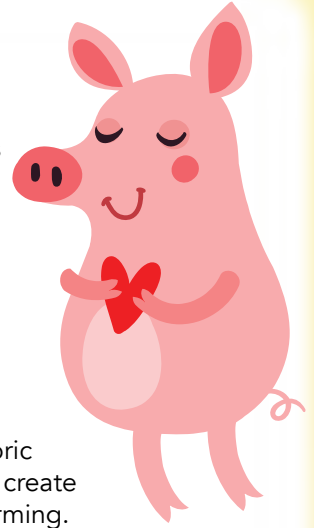
Ages: 3-6

Hours/Dates: 10-11:30am

Saturday, Feb 9

#1900777

Fees: \$25 (R) \$30 (N)



PIONEER LIFE ON THE FARM

Learn all about pioneer life in our unique 19th century historic log cabin. Participants will try their hand at pioneer chores, create a pioneer craft, and read stories about early settlers and farming. The session will conclude with a visit to one of our resident ponies, and we will learn how horses were an essential part of pioneer farm life.

Ages: 5-7

Hours/Dates: 10-11:30am

Saturday, Feb 16

#1900786

Fees: \$25 (R) \$30 (N)

INTRODUCTION TO BACKYARD CHICKENS

If you're interested in keeping pet chickens, the staff at Kelsey Creek Farm can help you get started! We'll cover setting up a chicken coop, where to get chickens, what breeds to pick from, how to care for them at all stages of life, and much more. You'll also tour our chicken coops, see the kind of equipment you will need, and practice picking up and holding a chicken. Pre-register to reserve your spot. Day-of registrations accepted as space allows.

Ages: 14+

Hours/Dates: 10-11:30am

Saturday, March 2

#1901015

Fees: \$20 (R) \$25 (N)

ST. PATRICK'S DAY

Adult and child will team together to make fun crafts, get up close with one of our farm animals and hunt for a pot of gold in the barnyard. Adult/child teams only. A team is one child and one adult.

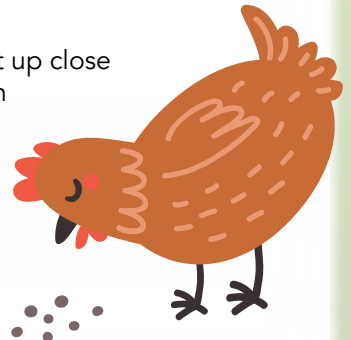
Ages: 3-6

Hours/Dates: 10-11:30am

Saturday, March 16

#1900801

Fees: \$25 (R) \$30 (N)



PAINTING WITH CHICKENS

Create a painting with a chicken! Children will work with a chicken to create a fun, colorful piece of artwork combining your child's creativity with the footprints of one of our resident chickens. Children also get to pet the chicken artists and feed them some yummy treats. All activities will be inside, but dress warm because the barn is not heated. The nontoxic children's finger paint is washable, but wear clothes that you don't mind getting dirty.

Ages: 5-9

Hours/Dates: 10-11am

Saturday, March 23 #1901016

Fees: \$25 (R) \$30 (N)

WHAT IS WOOLLY, WIGGLY, AND SNUGLY ALL OVER?

A sheep! Come to the farm to meet our sheep and find out what it takes to be a shepherd. Help us clean the sheep stall, feed out hay, and pet a sheep! Each child will do a craft with wool from one of our sheep. Come dressed for the weather.

Ages: 5-7

Hours/Dates: 10-11:30am

Saturday, April 6 #1900803

Fees: F\$25 (R) \$30 (N)



SPRING EGG-STRAVAGANZA

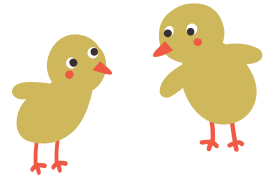
Come to Kelsey Creek for a fun morning on the farm with our lovable farm animals and learn all about eggs. Children will get to collect eggs from our chicken coops and compare chicken, duck, and goose eggs. They will also pet a bunny, pet a chicken, and go on an egg hunt!

Ages: 5-7.

Hours/Dates: 10-11:30am

Saturday, April 13 #1900804

Fees: \$25 (R) \$30 (N)



SHEEP SHEARING SPECIAL EVENT

Watch the sheep being shorn of their winter coats. Enjoy wool spinning demonstrations, children's crafts, tractor-pulled wagon rides, pony rides, food, animal viewing areas and more. Free shuttle service available at Wilburton Park & Ride and Bannerwood Sports Park.

Please note: no pets allowed on shuttle bus or in the barnyard areas.

Ages: All ages.

Hours/Dates: 11-4pm

Saturday, April 27 #1900841

Fees: No entrance fee. Cost vary for food & activities.

FRASER CABIN HERITAGE PROGRAM

Presented by the Eastside Heritage Center in partnership with Bellevue Parks & Community Services, the Fraser Cabin, built in 1888, comes to life with hands-on activities that relate to 1880s settler life. For more information, contact the Eastside Heritage Center at 425-450-1049, or visit www.eastsideheritagecenter.org

Ages: All ages.

Hours: 11-4pm

Saturday, Apr. 27

#1900845

Fees: Free

CAMPS



WINTER WONDERLAND CAMP

Spend your last few days of winter break exploring the farm, taking a pony ride, playing active games, creating crafts, and making new friends. Experienced staff will provide a safe and supportive environment in a small group setting.

Ages: 5-7

Hours/Dates: 9:30-3pm

Wednesday-Friday, Jan 2-4

#1900487

Fees: 120 (R) \$156 (N)

LITTLE FARMERS MINI CAMP

Children will be actively engaged with the joys of farm life. Learn about our animal friends, work in the barn with rakes and pails and mix up treats for the animals. We'll create art, bake snacks, and play games too.

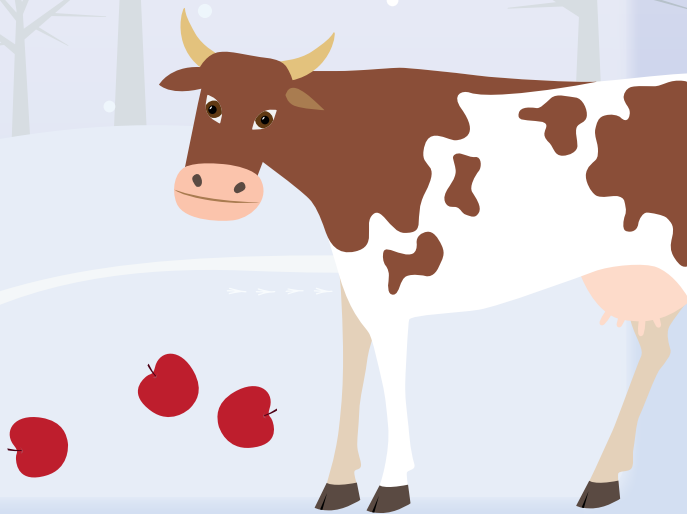
Ages: 4-6

Hours/Dates: 10-1pm

Monday-Friday, Feb 18-22

#1900799

Fees: \$155 (R) \$167 (N)



CARTOONIVERSITY CAMP

Explore the art of cartooning in-depth with local Editorial Cartoonist and Humorous Illustrator, Jeff Johnson, www.cartooniversity.com. Areas of study include character development, expressions, directional views, action poses, backgrounds, perspective, and lettering. Daily projects include blank puzzles, flip-book animation, character profiles, comic strips, and more! All supplies included.

Ages: 9-14

Hours/Dates: 10-3pm

Tuesday-Friday, Feb 19-22 #1900798

Fees: \$240 (R) \$288 (N)



CRAZY KITCHEN SCIENCE CAMP

Join Mrs. Kandi in the Farm House for a week of Crazy Kitchen Science. We will teach kids several different recipes that use different cooking skills to transform ingredients into a yummy finished product that you will take home each day. Each scientist will receive an apron to use on day 1 and take home at the end of camp. Please bring your lunch to camp. Unfortunately, we cannot accommodate food allergies.

Ages: 5-11

Hours/Dates: 9:30-2pm

Tuesday-Friday, Feb 19-22 #1900797

Fees: \$150 (R) \$180 (N)

PONY CAMP

Experience a full week packed with equine activities at Kelsey Creek Farm. Assist in grooming, saddling, care and feeding. This week's camp will include: riding, equine craft projects and games. End the week with a western style cookout.

Ages: 5-6

Hours/Dates: 10-3pm

Monday-Friday, April 8-12 #191052-1

Fees: \$325 (R) \$375 (N)



TEEN AND ADULT ACTIVITIES

AFTER SCHOOL VOLUNTEERS

Assist staff with farm chores and learn responsible animal care. You need to have a tolerance for being outside and working in a farm environment, including exposure to animals, hay, vegetation, and dust. Participants must be capable of understanding and following directions. Volunteers need to be able to attend the first two weeks of the program and no less than a total of 5 sessions. Maximum of 1 day per week sign up per participant. All volunteers will be required to complete a Criminal Background Check and provide their Social Security number.

Ages: 12-18

Hours/Dates: 3-4:30pm

Tuesdays, March 5- April 23 #1908301

Tuesdays, March 6-April 24 #1908302

Tuesdays, March 7-April 25 #1908303

Fees: \$10 (R) \$12 (N)



ADULT VOLUNTEERS

This is an opportunity to learn about livestock care and farm maintenance, as volunteers assist farm staff with daily operations, animal chores, and learn responsible animal care. Volunteers will be working outside, exposed to animals, hay, vegetation, and dust. They will work independently and be physically active. All volunteers will be required to complete a Criminal Background Check and provide their Social Security number.

Ages: 18+

Hours/Dates: 9:30-11:30am

March 5- April 23 #1908361

March 6- April 24 #1908362

Fees: \$10 (R) \$12 (N)

SPECIAL EVENT VOLUNTEERS

Earn community service hours. Assist with children's activities and other event tasks. Volunteers need to be able to follow directions, be comfortable in crowds and be on your feet in all types of weather. Participants must register by April 22 and be enrolled in high school at date of event. Questions; kelseycreekfarm@bellevuewa.gov, or 425-452-7688. No day-of-event registrations will be accepted. All volunteers will be required to complete a Criminal Background check and provide their Social Security number.

Ages: 14-18

Hours/Dates: 10-5pm

Saturday, April 27 #1901017

Fees: Free



BIRTHDAY PARTIES



Kelsey Creek Farm offers a variety of party packages to make your child's day special. All party packages are two hours long. Each party begins with a one-hour group activity led by a member of our farm team and is followed with a one-hour room rental for cake and presents. The locations of the room vary with the type of party, but all locations are indoors and include: 3 preschool-height tables (6-foot-long by 2.5-foot-wide) with children's chairs, a refrigerator/freezer, kitchen sink and trash cans. A restroom with hand-washing soap and paper towels is also available. Maximum capacity for all parties is 30 people and has been set to respect facility codes, the safety and wellbeing of the animals, and to ensure guest enjoyment.

* For more information, call 425-452-7688, or email KelseyCreekFarm@bellevuewa.gov.

BUNNY BIRTHDAY PARTIES

Celebrate your child's birthday by visiting the farm and meeting our friendly bunny. Enjoy a farm walk, a bunny craft, and special time with the birthday bunny. Party packages include one-hour bunny activities/farm walk and one-hour room rental in our farm house. Total party size limited to 30 people with a maximum of 15 children (no exceptions).

Ages: 3-11

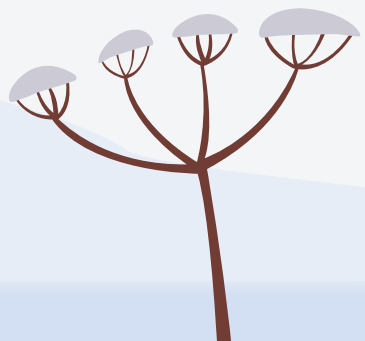
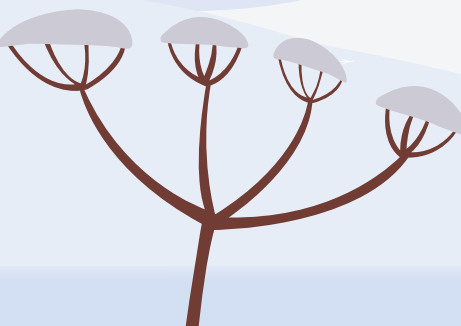
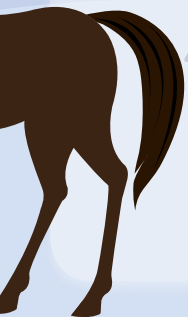
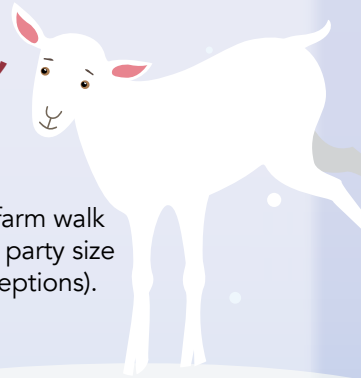
Fees: \$200 (R) \$220 (N)-up to 10 children
Addt'l children \$10 each (5 max additional children)

COOKIE DECORATING BIRTHDAY PARTY

Visit the farm to celebrate your child's birthday. Each child will decorate six Farm Cookies and enjoy a Farm Walk. Unfortunately, we cannot accommodate food allergies or sensitivities. Party packages include cookie decorating and farm walk followed by a one-hour room rental in our farm house. Total party size limited to 30 people with a maximum of 15 children (no exceptions).

Ages: 5-11

Fees: \$200 (R) \$220 (N) Up to 10 children
(Addt'l children \$15 each, 5 max additional children)



FARM BIRTHDAY PARTY

Celebrate your child's birthday with a visit to our historic farm. Make memories learning about sheep, rabbits, pigs, chickens and ponies. Tour inside our 1930's era dairy barn to learn local lore, too. Party packages are two hours long and include a tour followed by a one-hour room rental for food and presents. Maximum group size is 30 people with a maximum of 15 children (no exceptions).

Ages: 2-11

Fees: \$200 (R) \$220 (N)-up to 10 children

Add'l children \$10 each (5 max additional children) Children under 2 yrs. are no additional charge.

TOURS

HOLIDAY FARM TOUR: MARTIN LUTHER KING JR. DAY

Bring the whole family to come visit our resident farm animals! Meet our ponies, pigs, sheep, goats, chickens, and rabbits, all while discovering what it takes to be a farmer. You will get to pet many of our animals and even feed some of them! Children must be accompanied by an adult. Each attendee must register. Pre-register to guarantee your spot. Day-of registration will be accepted as space allows. Cost is per person.

Ages: 2+

Hours/Dates: Monday, Jan. 21

11-Noon

#1905971

1:30-2:30pm

#1905972

Fees: \$8 (R) \$10 (N)



HOLIDAY FARM TOUR: PRESIDENT'S DAY

Bring the whole family to come visit our resident farm animals! Meet our ponies, pigs, sheep, goats, chickens, and rabbits, all while discovering what it takes to be a farmer. You will get to pet many of our animals and even feed some of them! Children must be accompanied by an adult. Each attendee must register. Pre-register to guarantee your spot. Day-of registration will be accepted as space allows. Cost is per person.

Ages: 2+

Hours/Dates: Monday, Feb 18

11-Noon

#1907951

1:30-2:30pm

#1907952

Fees: \$8 (R) \$10 (N)



FARM TOURS FOR SCHOOLS AND GROUPS

Experience the Farm with a tour designed specifically for groups. Tour themes vary by season. Tours are available weekdays and are approximately one hour in length.

Ages: Most tours appropriate for children ages 2+.

Fees: \$90 (15 or fewer people, children & adults. Addt'l attendees: \$6 per child & \$2.50 per adult. Staff are free.)

KIDS ON THE FARM GROUP TOUR

Available January-April

Explore our farm with hands-on fun as you meet our goats, sheep, rabbits, chickens and ponies. Learn interesting animal facts then move inside to experience the old-fashioned skill of wool carding. Children create fuzzy sheep to take home.

SPRINGTIME IN THE BARNYARD GROUP TOUR

Available May only

Welcome springtime with a tour of our animals, which may include chicks, goat kids, piglets and a calf. Learn about their special care then finish up with planting pumpkin seeds in the garden.

FALL AT THE FARM GROUP TOUR

Available October only

Experience harvest season in a traditional way. Visit a pony and pig. Work on barn "chores" with child-sized pails and rakes. Tour the garden and pumpkin patch. Children finish up by choosing a pumpkin from our harvest-themed indoor pumpkin patch! Extra fee for pumpkins.

PIONEER DAYS GROUP TOUR

Available November only

Imagine life in the 1880's in our authentic log cabin. Children participate in activity stations learning to grind wheat and coffee, churn butter, hammer nails, pump water, play dress up, and engage in more living history skills. Storytelling about pioneer life with Laura Ingalls Wilder's Little House books helps children compare their life based on electricity and modern conveniences with the life of Laura and Mary.

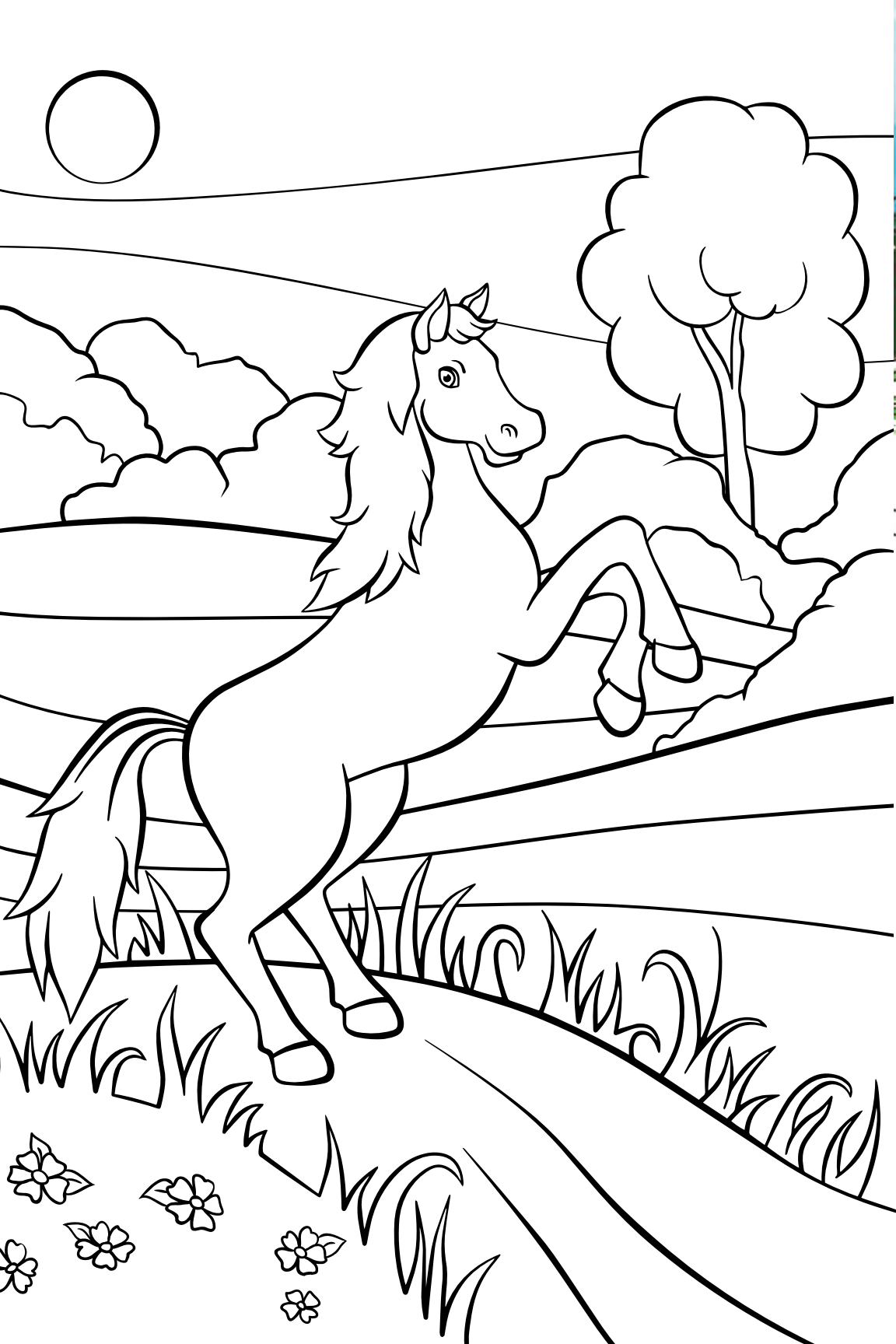
CRITTER ADOPTIONS

The animals at Kelsey Creek Farm are an essential part of our community's education and enjoyment. Your support helps maintain these animals in a natural farm setting. Become a Kelsey Creek Critter Sponsor! Simply call for an application, Care and custody of your critter stays with Kelsey Creek Farm. You can adopt any of the following farm animals: pony, pig, sheep, goat, cow, rabbit, and chicken. Adoption levels are available from \$25 for Best Friend to \$200 for Grandparent.

Have fun coloring these pages!
A gift from Kelsey Creek Farm to you.









FARM HISTORY

The farm's history began in 1921, when the Duey Family rented 190 acres and began delivering cream and butter stamped with the name Twin Valley Dairy. In August of 1933 the original barn burned. Mr. Duey, a skilled carpenter, along with some hired hands rebuilt the barn in two weeks. Today, this barn is the smaller of the two barns and is called the Animal Barn. Mr. Duey also built the Red Barn, originally used as a milk house.

The second dairy barn was built in 1943–44 by Mr. Michaels, the new owner, (this is the north barn now known as the Education Barn) and the dairy herd was increased in size. After the end of WWII, he sold the farmstead to Ray and Nettie Fisher. The Fishers phased out the dairy operation and began raising Hereford beef cattle. They built the current farm house in 1954 and moved to live on the property. In 1968 neighbors to the farm began a movement to petition the Bellevue

City Council to purchase the property and secure it as a public park. The neighbors' petition succeeded and the City negotiated with the Fisher family to purchase the 80 acres, including the farm house, barns and out buildings. The Fishers sold their farm property to the City at a price much reduced from what they knew that they could get from developers. They did so because they believed in preserving the beauty and legacy of the agricultural buildings and the land.

In 1972 the oldest barn was modified to house an assortment of farm animals for public viewing. The other, larger barn, commonly referred to as the Education Barn, was remodeled inside and used to accommodate a variety of community programs, including children's day camps, art classes, and farm-themed classes, to name just a few.

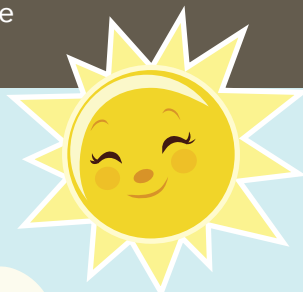


Wheelchair accessible. American Sign Language (ASL) or other interpretation available upon request. Assisted listening devices available. Call at least 48 Hours/Dates in advance for any request. 425-452-6884 or Relay Service 711.

Kelsey Creek Farm

410 130th Pl SE, Bellevue, WA 98005

425-452-7688 • KelseyCreekFarm@bellevuewa.gov



**REGISTER
ONLINE!**

register.bellevuewa.gov

Scholarships available for
many programs.



Bellevue Parks &
Community Services