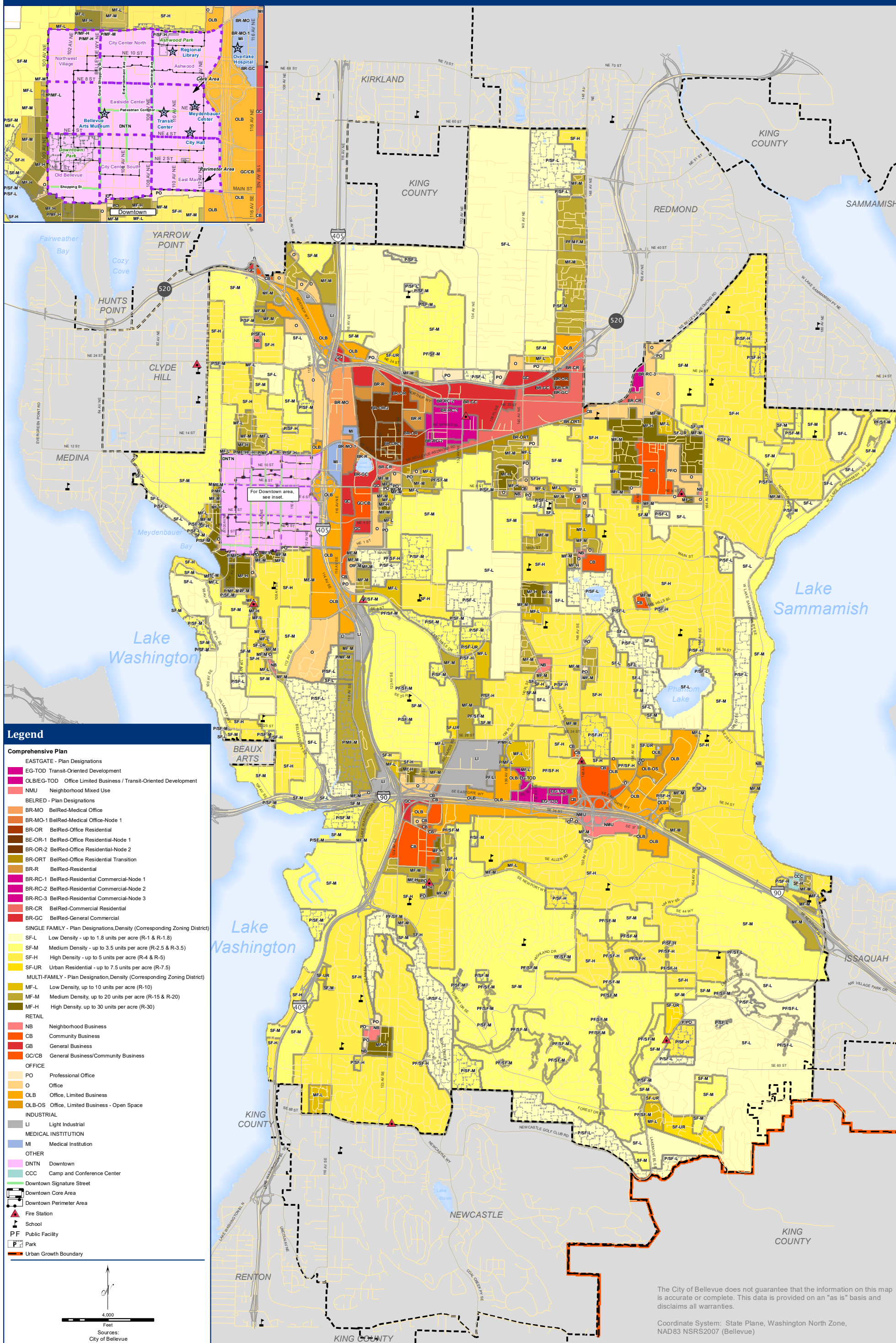


# Comprehensive Land Use Plan



**Legend**

**Comprehensive Plan**

**EASTGATE - Plan Designations**

- EG-TOD Transit-Oriented Development
- OLBEG-TOD Office Limited Business / Transit-Oriented Development
- NMU Neighborhood Mixed Use

**BELRED - Plan Designations**

- BR-MO BelRed-Medical Office
- BR-MO-1 BelRed-Medical Office-Node 1
- BR-OR BelRed-Office Residential
- BE-OR-1 BelRed-Office Residential-Node 1
- BR-OR-2 BelRed-Office Residential-Node 2
- BR-ORT BelRed-Office Residential Transition
- BR-R BelRed-Residential
- BR-RC-1 BelRed-Residential Commercial-Node 1
- BR-RC-2 BelRed-Residential Commercial-Node 2
- BR-RC-3 BelRed-Residential Commercial-Node 3
- BR-CR BelRed-Commercial Residential
- BR-GC BelRed-General Commercial

**SINGLE FAMILY - Plan Designations, Density (Corresponding Zoning District)**

- SF-L Low Density - up to 1.8 units per acre (R-1 & R-1.8)
- SF-M Medium Density - up to 3.5 units per acre (R-2.5 & R-3.5)
- SF-H High Density - up to 5 units per acre (R-4 & R-5)
- SF-UR Urban Residential - up to 7.5 units per acre (R-7.5)

**MULTI-FAMILY - Plan Designation, Density (Corresponding Zoning District)**

- MF-L Low Density, up to 10 units per acre (R-10)
- MF-M Medium Density, up to 20 units per acre (R-15 & R-20)
- MF-H High Density, up to 30 units per acre (R-30)

**RETAIL**

- NB Neighborhood Business
- CB Community Business
- GB General Business
- GC/CB General Business/Community Business

**OFFICE**

- PO Professional Office
- O Office
- OLB Office, Limited Business
- OLB-OS Office, Limited Business - Open Space

**INDUSTRIAL**

- LI Light Industrial

**MEDICAL INSTITUTION**

- MI Medical Institution

**OTHER**

- DNTN Downtown
- CCC Camp and Conference Center
- Downtown Signature Street
- Downtown Core Area
- Downtown Perimeter Area
- Fire Station
- School
- PF Public Facility
- Park
- Urban Growth Boundary

The City of Bellevue does not guarantee that the information on this map is accurate or complete. This data is provided on an "as is" basis and disclaims all warranties.

Coordinate System: State Plane, Washington North Zone, NAD83 NSRS2007 (Bellevue)