

---

**Bellevue Parks & Community Services**

# **Bellevue Airfield Park Master Plan**

**City Council Presentation  
June 25, 2012**



# Requested Council Action (July 2)

- ◆ Adopt Master Plan
- ◆ Adopt “Bellevue Airfield Park” as name
- ◆ Endorse Robinswood Park Off-Leash Expansion Plan and the use of Airfield Park funds to implement

# Acquisition History

1983	2.47 ac
2003	14.55 ac
<u>2004</u>	<u>10.53 ac</u>
Total =	27.55 ac



# Bellevue Airfield Park Master Plan Timeline

	2008	2009	2010	2011	2012
<b>Community Outreach</b>	May-Feb				
<b>Park Board Review</b>		Jan-Oct			
<b>Council Review</b>		Mar-Feb			
<b>Robinswood Off-Leash Planning</b>				Sept-June	
<b>SEPA</b>				Jan-Mar	
<b>Request Council Adoption</b>					*

# Opportunities for Community Input

- ◆ 4 Community Workshops (380)
- ◆ Workshop Exercises (435)
- ◆ Neighborhood Meeting (40)
- ◆ Petition (242)
- ◆ Emails & Phone (400+)
- ◆ 4 Surveys (1,200)
- ◆ Park Board (3)
- ◆ Council (4)

**2,700+**



---

# Most Frequent Requests (Competing Interests)

- ◆ Little League Field Complex
  - ◆ Off-Leash Dog Areas
  - ◆ Major Aquatic Facility
  - ◆ Preserve the Meadow
-

# Areas of Agreement

- ◆ Picnic facilities
- ◆ Children's play areas
- ◆ Enhance trails & connections
- ◆ Limit vehicle access to 160<sup>th</sup>
- ◆ Utilize existing parking if possible
- ◆ Maintain residential buffers
- ◆ Provide restroom/park furnishings
- ◆ Environmentally responsible



# Council Feedback (3/9/09)

- ◆ Lighted Athletic Fields a priority
- ◆ Neighborhood Buffers very important
- ◆ Accessible Picnic Facilities important
- ◆ Off-Leash Areas
  - Support expansion Citywide
  - Displacement a concern
  - Robinswood acceptable if higher priority uses at Airfield limit off-leash opportunities
- ◆ Interest in indoor recreation facility, but lower priority



# Park Board Recommendation

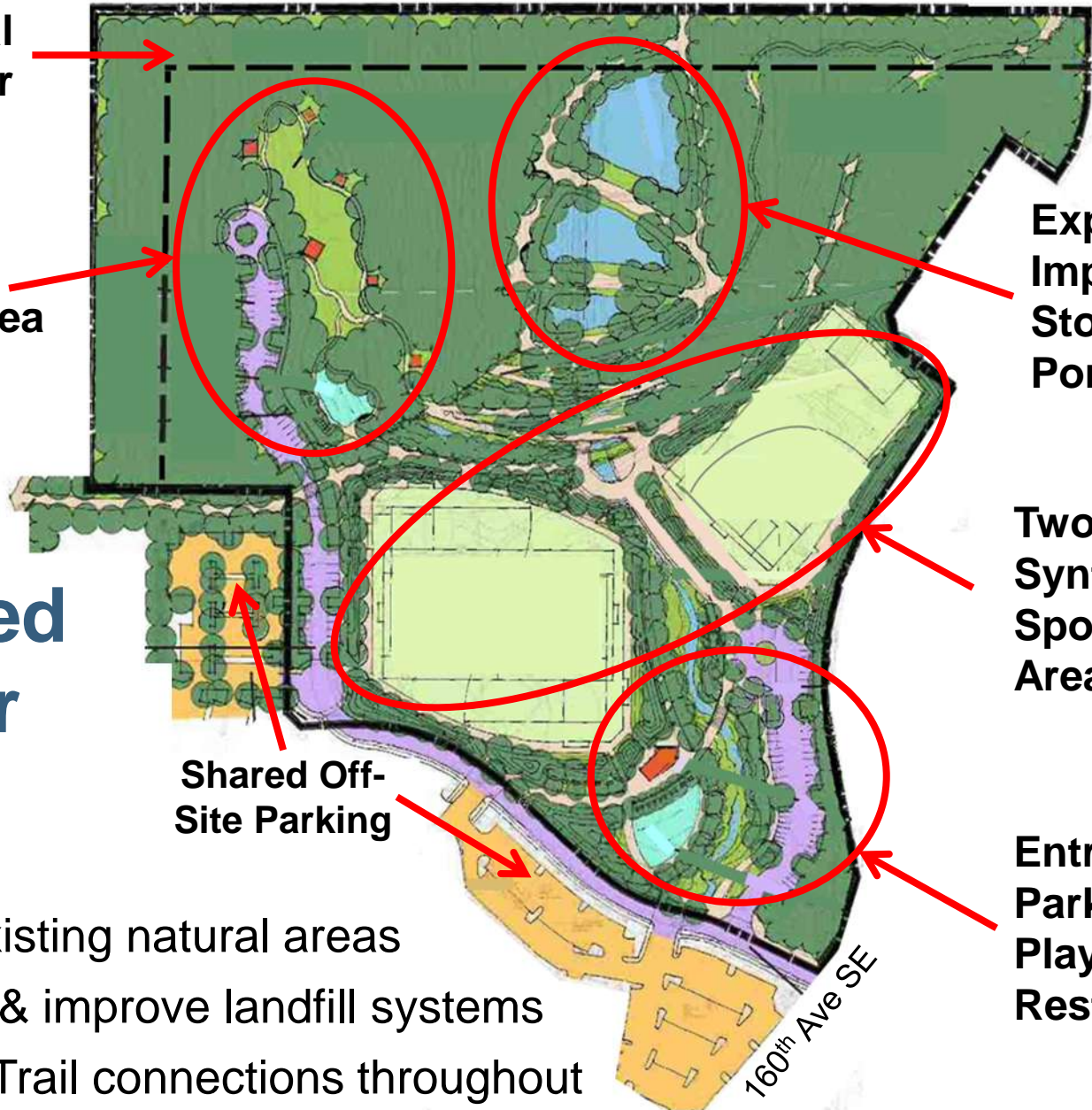
- ◆ Master Plan
  - Alternative A, Springfield-Oriented
  - Expand Robinswood Park Off-Leash Area to at least 5 acres
  - Utilize levy project funds to implement off-leash improvements
- ◆ Park name: Airfield Park

100' residential  
buffer

Wooded  
Picnic Area

# Preferred Master Plan

- ◆ Preserve existing natural areas
- ◆ Cap landfill & improve landfill systems
- ◆ Pathway & Trail connections throughout



Expand &  
Improve  
Stormwater  
Ponds

Two Lighted  
Synthetic Turf  
Sportsfield  
Areas

Shared Off-  
Site Parking

Entry,  
Parking,  
Playground,  
Restroom

160th Ave SE

# Rationale for Recommended Master Plan

- ◆ Responds to significant desires expressed by the community
- ◆ Consistent with original intent of purchase
- ◆ Consistent with the *Park & Open Space System Plan goals*
- ◆ Consistent with Council's recreational priorities identified earlier
- ◆ Responds to the need for high quality lighted sportfields
- ◆ Combined with improvements at Robinswood, responds to the need for more & better off-leash facilities in Bellevue
- ◆ Is environmentally responsible and respectful of neighbors

# Council Feedback (Jan/Feb 2010)

- ◆ Concur with Park Board recommended plan, including expansion of Robinswood Park off-leash facilities funded by Airfield Park project
- ◆ Concerned with lack of specificity/certainty of Robinswood expansion
- ◆ Work with community to develop off-leash plan and incorporate environmental (SEPA) review into Airfield review
- ◆ Preferred Bellevue Airfield Park as name

# Robinswood Park

(50 Acres)

0.5 Acres

1.25 Acres

# Eastgate Area Properties

(27.5 acres)

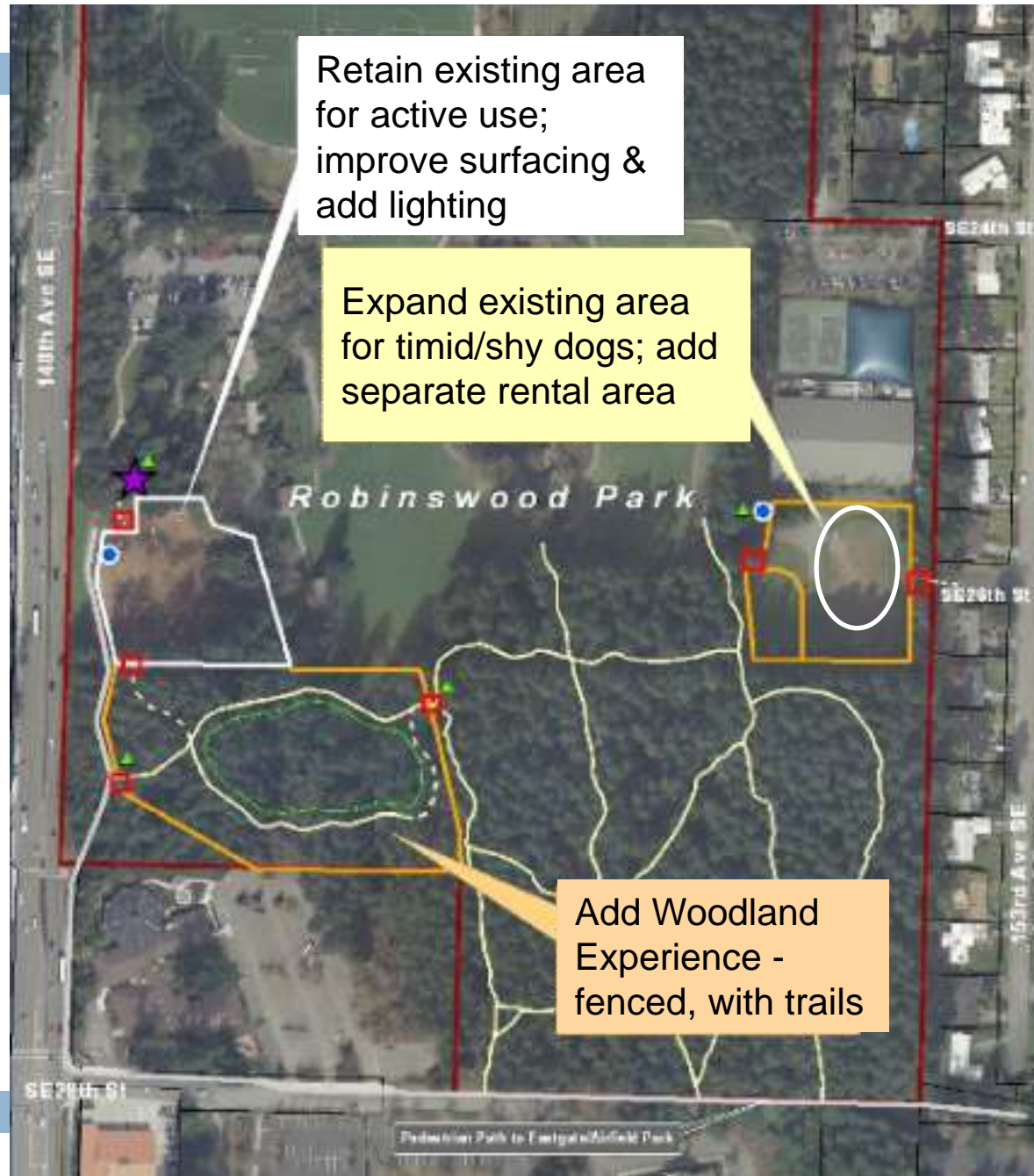
1/4 mile



# Robinswood Off-Leash Plan Preferred Alternative

Expand off-leash areas from 1.75 to 5.75 acres

- Separate active and timid dogs
- Add reservable area
- Add woodland trails





# Bellevue Airfield Park Master Plan

# Next Steps

## Tonight

- ◆ Council Discussion

## After Tonight

- ◆ Request action July 2
- ◆ Request Phase 1 design contract approval this fall



Construction not funded in 2011-17 CIP



