



SUMMARY OF FINDINGS

Below is a summary of the data we collected near the intersection of SE 17th Street and 125th Avenue SE from 12/7/2018 to 12/13/2018.



ROADWAY CHARACTERISTICS

ROAD SPECIFICATIONS

SE 17th Street and 125th Avenue SE are residential streets approximately 30 ft wide. Vehicles can park on both sides of the street.

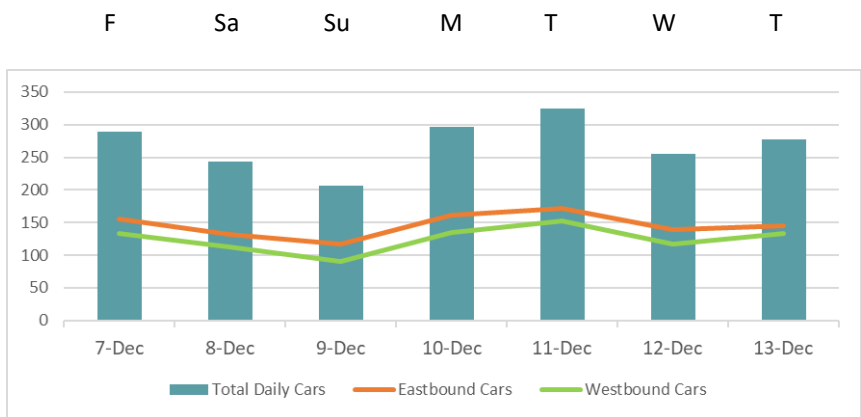
RESIDENTIAL STREET

SE 17th Street and 125th Avenue SE are residential streets in the Woodridge neighborhood of Bellevue with a speed limit of 25 mph.



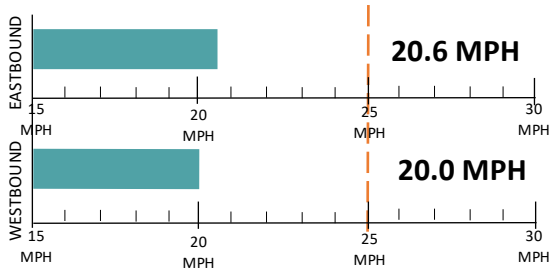
DAILY TRAFFIC

The Mid-Week Average on SE 17th Street is 286 cars per day. Mid-Week Average includes data between Tuesday and Thursday.



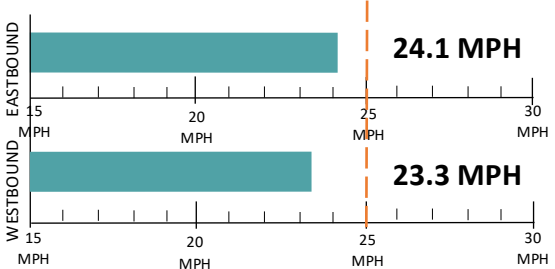
SPEED STUDY

Average Speeds



85th% Speed

85% of vehicles were traveling at or below this speed.



Speed Limit Car Speeds on SE 17th Street



COLLISION HISTORY

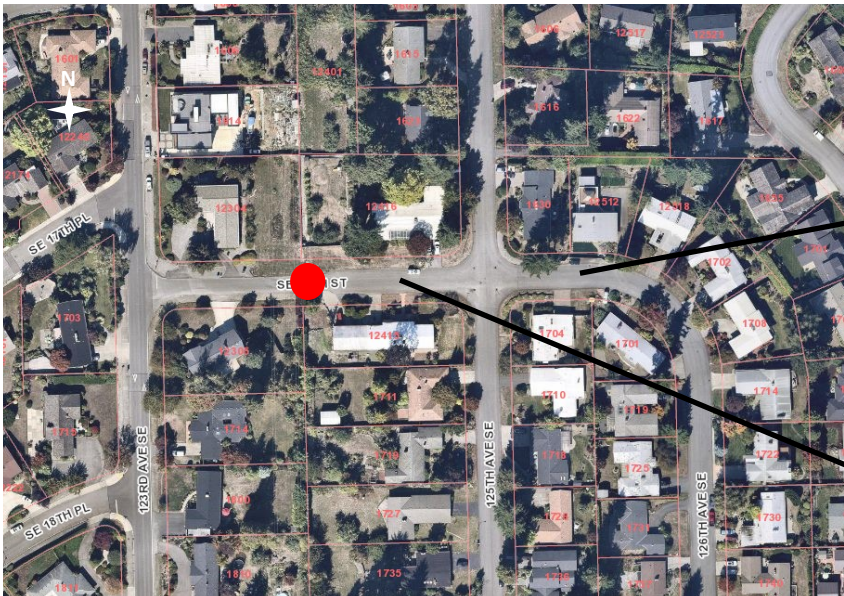
A three-year collision study was conducted at SE 17th Street and 125th Avenue SE, and there was one reported collision. This was a “property damage only” collision, and one of the motorists was issued a citation for failing to yield the right of way to the other motorist who had already entered the intersection.

KEY:

Speed Study Location



FIELD REVIEW



Facing Westbound



Facing Eastbound





RECOMMENDATIONS

Below are our recommendations for SE 17th Street and 125th Avenue SE based on the field reviews, data collection, and engineering analysis. More detail on these recommendations are outlined in the **Residential Traffic Guidebook** (BellevueWA.gov/ResidentialTrafficGuidebook). By educating the community and encouraging safe driving, we can begin to change driver behavior and reduce vehicle speeds.



EDUCATE THE
COMMUNITY



REDUCE EXCESSIVE
VEHICLE SPEEDS



IMPROVE
PEDESTRIAN AND
BICYCLE SAFETY



TRAFFIC SAFETY YARD SIGNS

This program involves lending communities portable signs that encourage motorists to respect the neighborhood, drive responsibly, and drive 25 mph. The signs are moved by community volunteers from place to place throughout the neighborhood every few days.



RADAR DOLLY

You can borrow and place a radar dolly on your street for up to two weeks. This unit gives motorists feedback on the speed at which they are driving on a digital reader board, encouraging them to obey the speed limit. Should you like to borrow the radar dolly, please request it by calling (425) 452-6457 or sign up on BellevueWA.gov/RadarDolly. Once we receive a request, City staff will contact you to make arrangements for both the drop-off and pick-up of the radar dolly at your home.

VISION ZERO



Bellevue’s Vision Zero initiative reflects the city’s commitment to reduce traffic deaths and serious injury collisions on city streets to zero by the year 2030. In 2015, the City Council passed a resolution providing a framework to achieve this goal. It states "the life, safety and health of residents, employees and visitors to Bellevue is the City Council's highest priority." **By participating in one of the recommendations above, you are helping the City of Bellevue in our efforts to make our streets safer for everyone.**

MORE INFORMATION

Find out more about these recommendations in our **Residential Traffic Guidebook** or by visiting the Neighborhood Traffic Safety Services website.

GUIDEBOOK: BellevueWA.gov/ResidentialTrafficGuidebook

WEBSITE: BellevueWA.gov/NTSS

