



SUMMARY OF FINDINGS

Below is a summary of the data we collected on **SE 20th Place east of 127th Avenue SE** between 4/14/2018 and 4/20/2018.



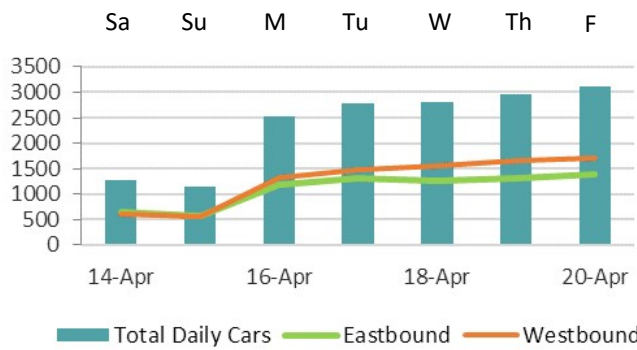
ROADWAY CHARACTERISTICS

SE 20th Place between 123rd Avenue SE and 128th Avenue SE is a collector arterial road with commuter traffic. The two-lane road section is 26 ft wide and approximately 1800 ft long. Along the road are residential properties and Woodridge Elementary School. There is continuous sidewalk or asphalt path on the south side and partial sidewalk on the north side of the road. The road has 25 mph pavement markings. The posted speed limit is 20 mph for the school zone.



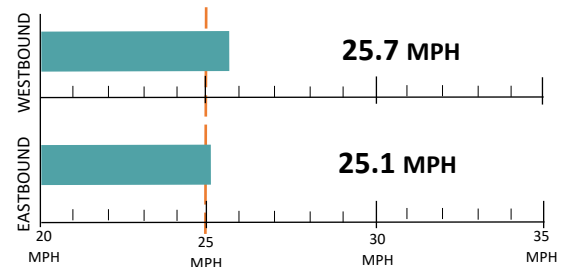
DAILY TRAFFIC

The Mid-Week Average on SE 20th Place is **2,852** cars per day. Mid-Week Average includes data between Tuesday and Thursday.



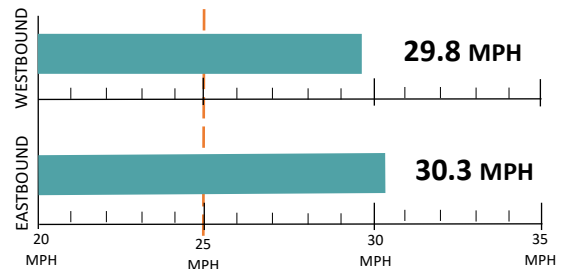
SPEED STUDY

Average Speeds



85% Speed

85% of vehicles were traveling at or below this speed.

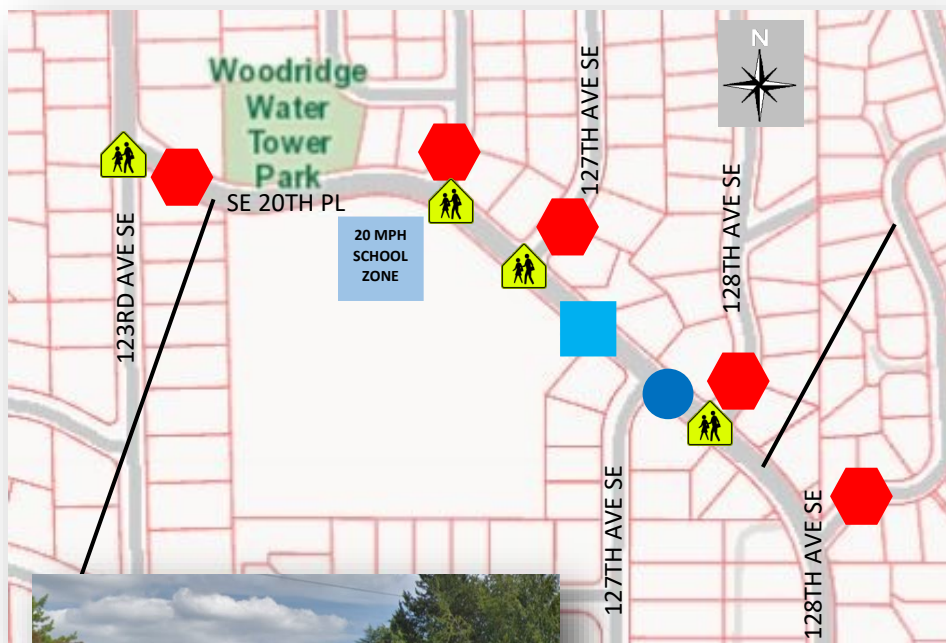


Speed Limit (25 MPH) Car Speeds on SE 20th Place



COLLISION HISTORY

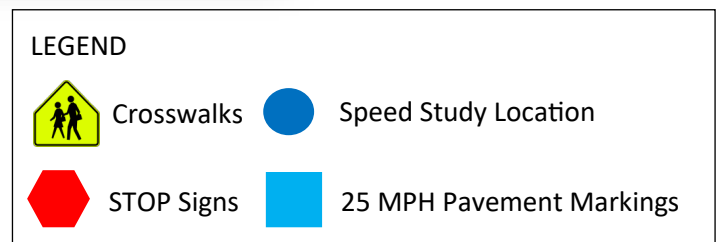
A three-year collision study was conducted along SE 20th Place between 123rd Avenue SE to 128th Ave SE. There were no collisions reported.



SE 20th Place facing west.



SE 20th Place facing east.





RECOMMENDATIONS

Below are our recommendations for SE 20th Place based on the field reviews, data collection, and engineering analysis. More detail on these recommendations are outlined in the **Residential Traffic Guidebook** (BellevueWA.gov/ResidentialTrafficGuidebook).

By educating the community and encouraging safe driving, we can begin to change driver behavior and reduce vehicle speeds.



EDUCATE THE COMMUNITY



REDUCE EXCESSIVE VEHICLE SPEEDS



RADAR DOLLY



You can borrow and place a radar dolly on your street for up to two weeks. This unit gives motorists feedback on the speed at which they are driving on a digital reader board, encouraging them to obey the speed limit. Should you like to borrow the radar dolly, please request it by calling (425) 452-6457 or sign up on BellevueWA.gov/RadarDolly. Once we receive a request, City staff will contact you to make arrangements for both the drop-off and pick-up of the radar dolly at your home.



TRAFFIC ENFORCEMENT

The Transportation Department works closely with the Bellevue Police Department to enforce speed limits and other traffic laws in neighborhoods. Using key traffic data provided by Transportation staff, officers focus their scheduled patrols on the times and places where speeding most often occurs. Typically, targeted enforcement occurs during a one week timeframe. Enforcement is also available by request. To request enforcement, go to <https://bellevueWA.gov/tsr> or call (425) 577-5656.

VISION ZERO



Bellevue’s Vision Zero initiative reflects the city’s commitment to reduce traffic deaths and serious injury collisions on city streets to zero by the year 2030. In 2015, the City Council passed a resolution providing a framework to achieve this goal. It states "the life, safety and health of residents, employees and visitors to Bellevue is the City Council's highest priority."

By participating in one of the recommendations above, you are helping the City of Bellevue in our efforts to make our streets safer for everyone.

MORE INFORMATION

Find out more about these recommendations in our **Residential Traffic Guidebook** or by visiting the Neighborhood Traffic Safety Services website.

GUIDEBOOK: BellevueWA.gov/ResidentialTrafficGuidebook

WEBSITE: BellevueWA.gov/NTSS

