



SUMMARY OF FINDINGS

Below is a summary of the data we collected on 127th Avenue SE midway between SE 23rd Street and SE 23rd Place from 7/20/2018 to 7/26/2018.



ROADWAY CHARACTERISTICS

ROAD SPECIFICATIONS

127th Avenue SE ranges in width from 24 to 28 feet. There is an asphalt sidewalk on the west side of the street.

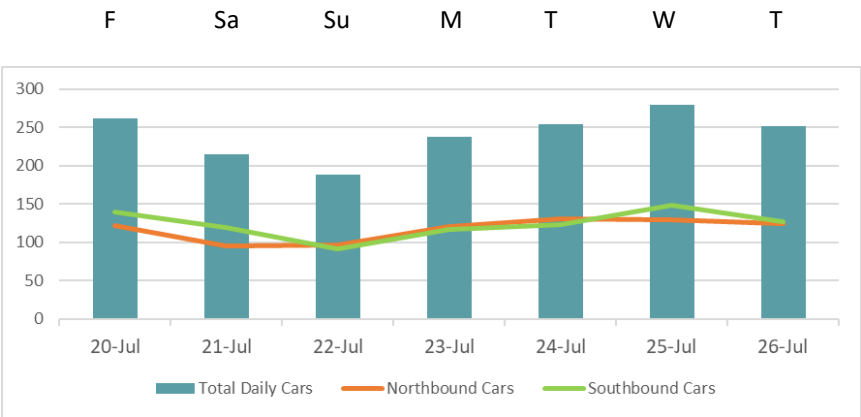
RESIDENTIAL STREET

127th Avenue SE is a residential street in the Woodridge neighborhood of Bellevue with a speed limit of 25 mph.



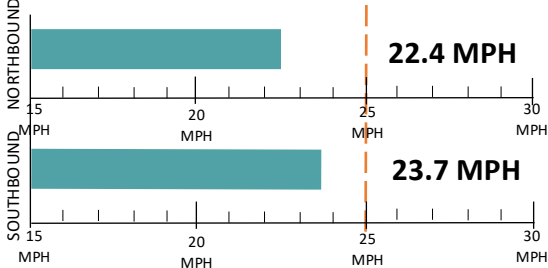
DAILY TRAFFIC

The Mid-Week Average on 127th Avenue SE is 262 cars per day. Mid-Week Average includes data between Tuesday and Thursday.

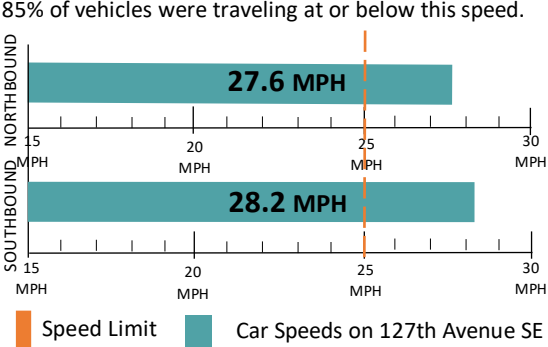


SPEED STUDY

Average Speeds



85th% Speed



COLLISION HISTORY

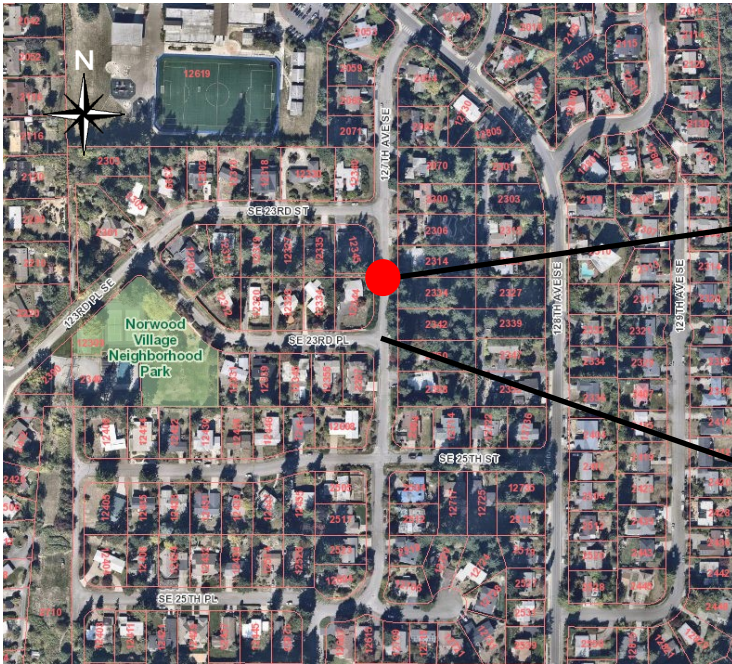
A three-year collision study was conducted on 127th Avenue SE between SE 20th Place and SE 25th Place. There were no reported crashes.



FIELD REVIEW

KEY:

● Speed Study Location



Facing Southbound



Facing Northbound





## RECOMMENDATIONS

Below are our recommendations for 127th Avenue SE and SE 25th Street based on the field reviews, data collection, and engineering analysis. More detail on these recommendations are outlined in the **Residential Traffic Guidebook** ([BellevueWA.gov/ResidentialTrafficGuidebook](http://BellevueWA.gov/ResidentialTrafficGuidebook)). By educating the community and encouraging safe driving, we can begin to change driver behavior and reduce vehicle speeds.



EDUCATE THE  
COMMUNITY



REDUCE EXCESSIVE  
VEHICLE SPEEDS



IMPROVE  
PEDESTRIAN AND  
BICYCLE SAFETY



### TRAFFIC SAFETY YARD SIGNS



This program involves lending communities portable signs that encourage motorists to respect the neighborhood, drive responsibly, and drive 25 mph. The signs are moved by community volunteers from place to place throughout the neighborhood every few days.



### RADAR DOLLY

You can borrow and place a radar dolly on your street for up to two weeks. This unit gives motorists feedback on the speed at which they are driving on a digital reader board, encouraging them to obey the speed limit. Should you like to borrow the radar dolly, please request it by calling (425) 452-6457 or sign up on [BellevueWA.gov/RadarDolly](http://BellevueWA.gov/RadarDolly). Once we receive a request, City staff will contact you to make arrangements for both the drop-off and pick-up of the radar dolly at your home.

## VISION ZERO



Bellevue’s Vision Zero initiative reflects the city’s commitment to reduce traffic deaths and serious injury collisions on city streets to zero by the year 2030. In 2015, the City Council passed a resolution providing a framework to achieve this goal. It states "the life, safety and health of residents, employees and visitors to Bellevue is the City Council's highest priority." **By participating in one of the recommendations above, you are helping the City of Bellevue in our efforts to make our streets safer for everyone.**

## MORE INFORMATION

Find out more about these recommendations in our **Residential Traffic Guidebook** or by visiting the Neighborhood Traffic Safety Services website.

**GUIDEBOOK:** [BellevueWA.gov/ResidentialTrafficGuidebook](http://BellevueWA.gov/ResidentialTrafficGuidebook)

**WEBSITE:** [BellevueWA.gov/NTSS](http://BellevueWA.gov/NTSS)

