



SUMMARY OF FINDINGS

Below is a summary of the data we collected on **Northup Way west of 160th Avenue NE** between 7/19/2018 and 7/25/2018.



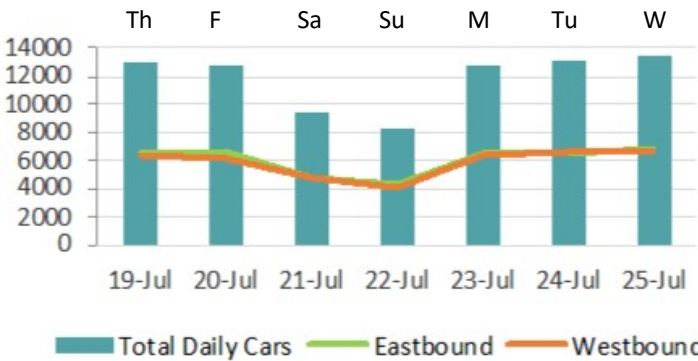
ROADWAY CHARACTERISTICS

Northup Way between 156th Avenue NE and 164th Avenue NE is a minor arterial road with commuter traffic. The three-lane road is 31 ft wide. Along the road are residential properties. There is an asphalt walk path or sidewalk on both sides of the road. The posted speed limit is 35 mph.



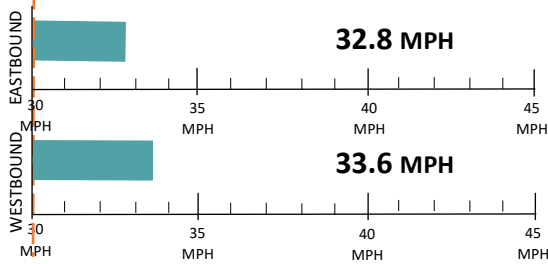
DAILY TRAFFIC

The Mid-Week Average on Northup Way is **13,199** cars per day. Mid-Week Average includes data between Tuesday and Thursday.



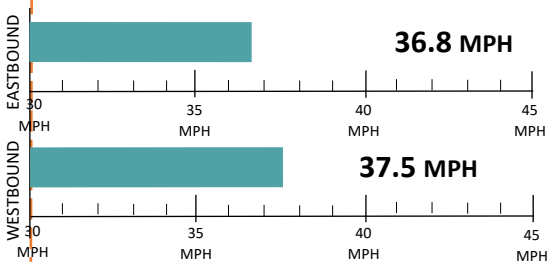
SPEED STUDY

Average Speeds



85th% Speed

85% of vehicles were traveling at or below this speed.

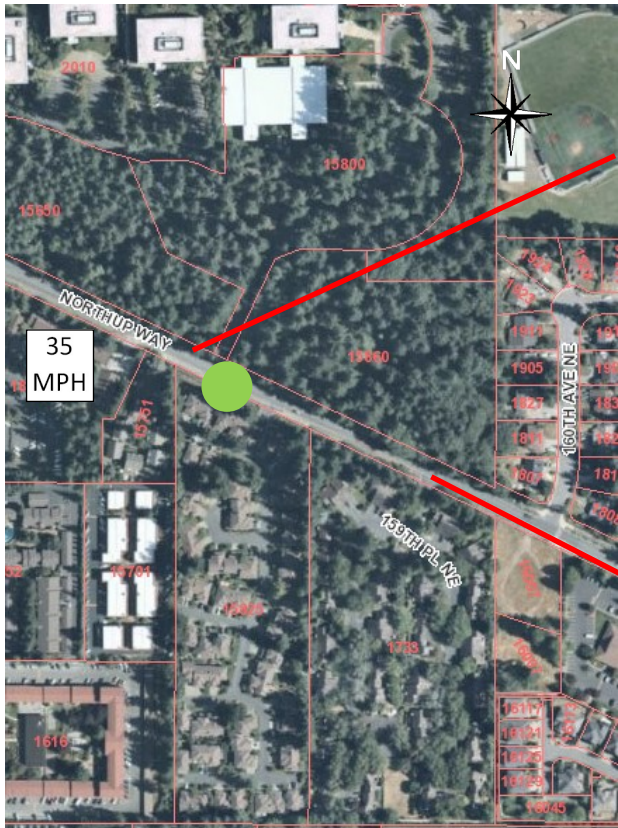


Speed Limit Car Speeds on Northup Way



COLLISION HISTORY

A three-year collision study was conducted along Northup Way between 156th Avenue NE to 164th Avenue NE. There were 11 collisions reported, involving one pedestrian and one bicyclist.



Northup Way facing east.



Northup Way facing west.

LEGEND

35 MPH

Speed Limit Sign

Speed Study Location



# RECOMMENDATIONS

Below are our recommendations for Northrup Way based on the field reviews, data collection, and engineering analysis. More detail on these recommendations are outlined in the **Residential Traffic Guidebook** ([Bellevuewa.gov/ResidentialTrafficGuidebook](http://Bellevuewa.gov/ResidentialTrafficGuidebook)). By educating the community and encouraging safe driving, we can begin to change driver behavior and reduce vehicle speeds.



EDUCATE THE  
COMMUNITY



REDUCE EXCESSIVE  
VEHICLE SPEEDS



RADAR DOLLY



You can borrow and place a radar dolly on your street for up to two weeks. This unit gives motorists feedback on the speed at which they are driving on a digital reader board, encouraging them to obey the speed limit. Should you like to borrow the radar dolly, please request it by calling (425) 452-6457 or sign up on [Bellevuewa.gov/RadarDolly](http://Bellevuewa.gov/RadarDolly). Once we receive a request, City staff will contact you to make arrangements for both the drop-off and pick-up of the radar dolly at your home.



TRAFFIC ENFORCEMENT



The Transportation Department works closely with the Bellevue Police Department to enforce speed limits and other traffic laws in neighborhoods. Using key traffic data provided by Transportation staff, officers focus their scheduled patrols on the times and places where speeding most often occurs. Typically, targeted enforcement occurs during a one week timeframe. Enforcement is also available by request. To request enforcement, go to <https://bellevuewa.gov/tsr> or call (425) 577-5656.

# VISION ZERO



Bellevue’s Vision Zero initiative reflects the city’s commitment to reduce traffic deaths and serious injury collisions on city streets to zero by the year 2030. In 2015, the City Council passed a resolution providing a framework to achieve this goal. It states "the life, safety and health of residents, employees and visitors to Bellevue is the City Council's highest priority." **By participating in one of the recommendations above, you are helping the City of Bellevue in our efforts to make our streets safer for everyone.**

# MORE INFORMATION

Find out more about these recommendations in our **Residential Traffic Guidebook** or by visiting the Neighborhood Traffic Safety Services website.

**GUIDEBOOK:** [BellevueWA.gov/ResidentialTrafficGuidebook](http://BellevueWA.gov/ResidentialTrafficGuidebook)

**WEBSITE:** [BellevueWA.gov/NTSS](http://BellevueWA.gov/NTSS)