



SUMMARY OF FINDINGS

Below is a summary of the data we collected on Main Street between 162nd Avenue and 164th Avenue from 7/19/2018 to 7/25/2018.



ROAD SPECIFICATIONS

Main Street between 162nd and 164th is approximately 32 ft wide. On-street parking is allowed on both sides of the street.

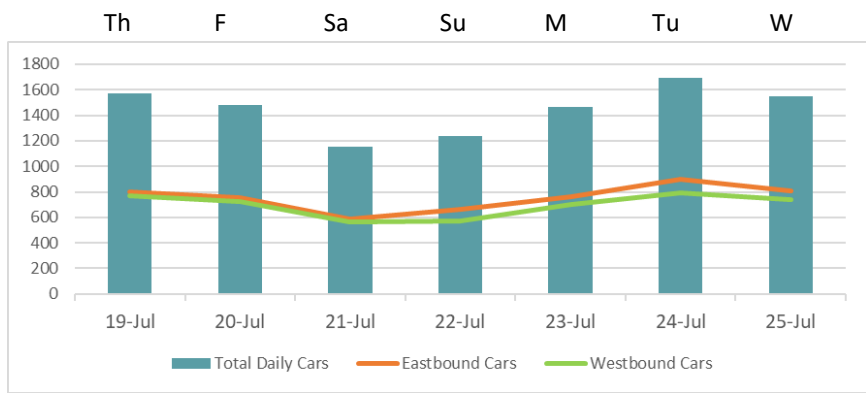
RESIDENTIAL STREET

Main Street between 162nd and 164th is a residential street in the Lake Hills neighborhood of Bellevue with a speed limit of 25 mph.



DAILY TRAFFIC

The Mid-Week Average on Main Street is 1,602 cars per day.  
Mid-Week Average includes data between Tuesday and Thursday.

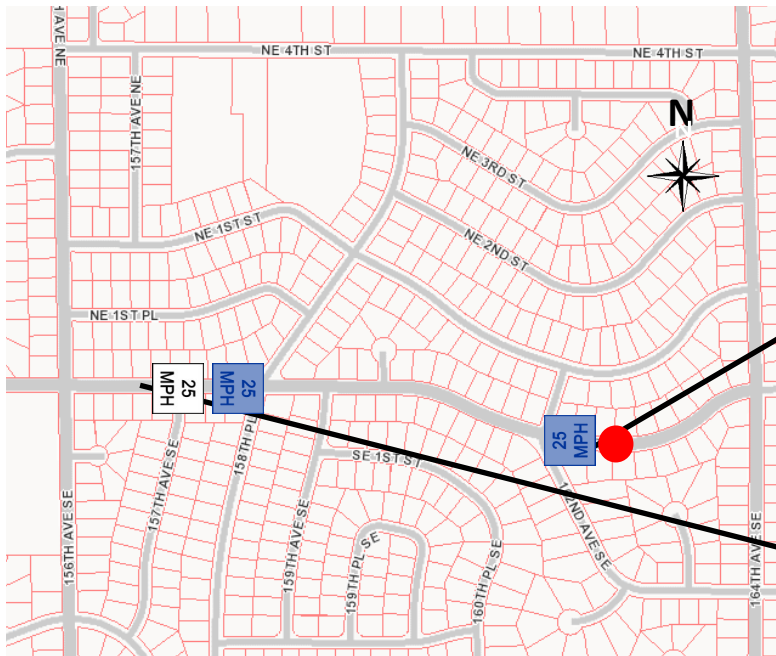


COLLISION HISTORY

A three-year collision study was conducted on Main Street between 162nd Avenue and 164th Avenue, and there no reported crashes.

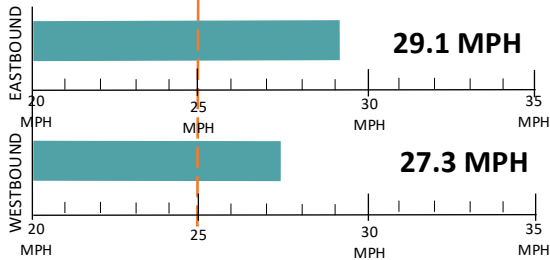


FIELD REVIEW



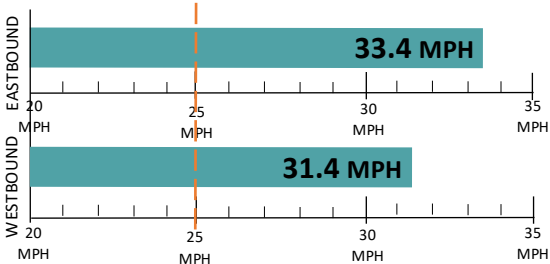
SPEED STUDY

Average Speeds



85th% Speed

85% of vehicles were traveling at or below this speed.



Speed Limit Car Speeds on Main Street

KEY:

- 25 MPH Speed Limit Sign
- 25 MPH Pavement Marking
- Speed Study Location



Facing Westbound



Facing Eastbound





## RECOMMENDATIONS

Below are our recommendations for Main Street between 162nd Avenue and 164th Avenue based on the field reviews, data collection, and engineering analysis. More detail on these recommendations are outlined in the **Residential Traffic Guidebook** ([BellevueWA.gov/ResidentialTrafficGuidebook](http://BellevueWA.gov/ResidentialTrafficGuidebook)). By educating the community and encouraging safe driving, we can begin to change driver behavior and reduce vehicle speeds.



EDUCATE THE  
COMMUNITY



REDUCE EXCESSIVE  
VEHICLE SPEEDS



IMPROVE  
PEDESTRIAN AND  
BICYCLE SAFETY



### TRAFFIC SAFETY YARD SIGNS

This program involves lending communities portable signs that encourage motorists to respect the neighborhood, drive responsibly, and drive 25 mph. The signs are moved by community volunteers from place to place throughout the neighborhood every few days.



### RADAR DOLLY

You can borrow and place a radar dolly on your street for up to two weeks. This unit gives motorists feedback on the speed at which they are driving on a digital reader board, encouraging them to obey the speed limit. Should you like to borrow the radar dolly, please request it by calling (425) 452-6457 or sign up on [BellevueWA.gov/RadarDolly](http://BellevueWA.gov/RadarDolly). Once we receive a request, City staff will contact you to make arrangements for both the drop-off and pick-up of the radar dolly at your home.



### TRAFFIC ENFORCEMENT

The Transportation Department works closely with the Bellevue Police Department to enforce speed limits and other traffic laws in neighborhoods. Using key traffic data provided by Transportation staff, officers focus their scheduled patrols on the times and places where speeding most often occurs. Typically, targeted enforcement occurs during a one week timeframe. Enforcement is also available by request. To request enforcement, go to [bellevuewa.gov/tsr](http://bellevuewa.gov/tsr) or call (425) 577-5656.

## MORE INFORMATION

Find out more about these recommendations in our **Residential Traffic Guidebook** or by visiting the Neighborhood Traffic Safety Services website.

**GUIDEBOOK:** [BellevueWA.gov/ResidentialTrafficGuidebook](http://BellevueWA.gov/ResidentialTrafficGuidebook)

**WEBSITE:** [BellevueWA.gov/NTSS](http://BellevueWA.gov/NTSS)

