



SUMMARY OF FINDINGS

Below is a summary of the data we collected on SE 16th Street east of 104th Avenue SE between 7/19/2018 and 7/25/2018.



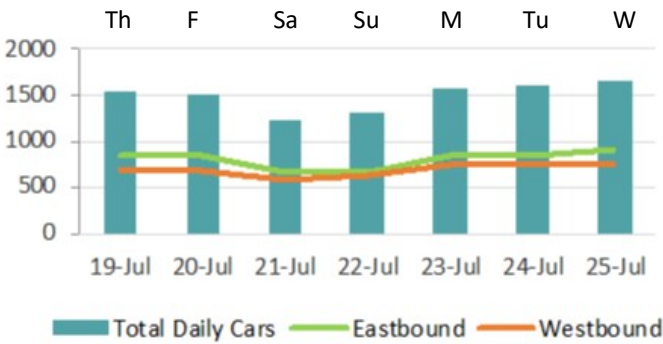
ROADWAY CHARACTERISTICS

SE 16th Street east of 104th Avenue SE and west of Bellevue Way SE is a residential street with commuter traffic. The two-lane road is 21 ft wide. Along the road are residential properties. There is a sidewalk on the south side of the road. The posted speed limit is 25 mph.



DAILY TRAFFIC

The Mid-Week Average on SE 16th Street is **1,594** cars per day.  
Mid-Week Average includes data between Tuesday and Thursday.

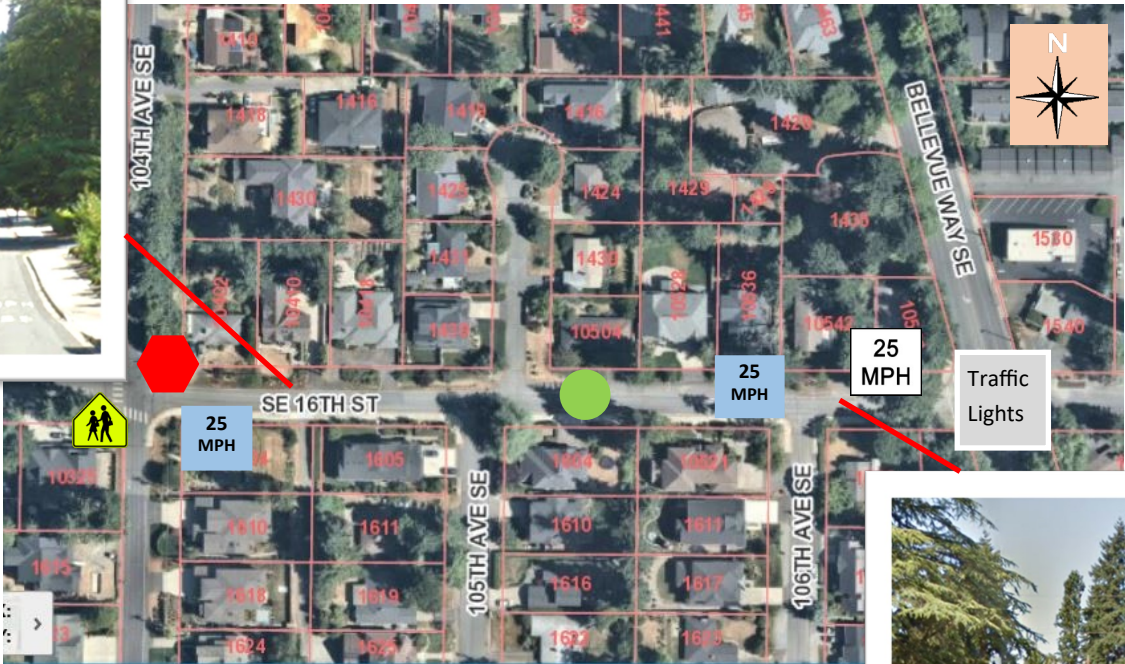


COLLISION HISTORY

A three-year collision study was conducted along SE 16th Street east of 104th Avenue SE to Bellevue Way SE. There were no collisions reported on this stretch of the road.



SE 16th Street facing east.



LEGEND

25 MPH

Speed Limit Sign

Crosswalk

Speed Study Location

25 MPH

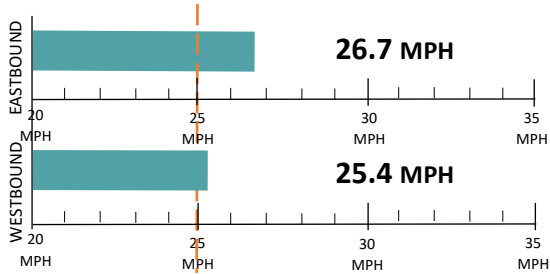
Pavement Marking

STOP Sign



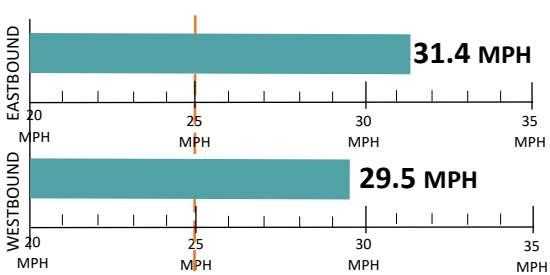
SPEED STUDY

Average Speeds



85th% Speed

85% of vehicles were traveling at or below this speed.



Speed Limit Car Speeds on SE 16th Street



SE 16th Street facing west.



## RECOMMENDATIONS

Below are our recommendations for SE 16th Street based on the field reviews, data collection, and engineering analysis. More detail on these recommendations are outlined in the **Residential Traffic Guidebook** ([BellevueWA.gov/ResidentialTrafficGuidebook](http://BellevueWA.gov/ResidentialTrafficGuidebook)).

By educating the community and encouraging safe driving, we can begin to change driver behavior and reduce vehicle speeds.



EDUCATE THE  
COMMUNITY



REDUCE EXCESSIVE  
VEHICLE SPEEDS



**RADAR DOLLY**



You can borrow and place a radar dolly on your street for up to two weeks. This unit gives motorists feedback on the speed at which they are driving on a digital reader board, encouraging them to obey the speed limit. Should you like to borrow the radar dolly, please request it by calling (425) 452-6457 or sign up on [BellevueWA.gov/RadarDolly](http://BellevueWA.gov/RadarDolly). Once we receive a request, City staff will contact you to make arrangements for both the drop-off and pick-up of the radar dolly at your home.



**TRAFFIC ENFORCEMENT**



The Transportation Department works closely with the Bellevue Police Department to enforce speed limits and other traffic laws in neighborhoods. Using key traffic data provided by Transportation staff, officers focus their scheduled patrols on the times and places where speeding most often occurs. Typically, targeted enforcement occurs during a one week timeframe. Enforcement is also available by request. To request enforcement, go to <https://bellevueWA.gov/tsr> or call (425) 577-5656.

## VISION ZERO



Bellevue’s Vision Zero initiative reflects the city’s commitment to reduce traffic deaths and serious injury collisions on city streets to zero by the year 2030. In 2015, the City Council passed a resolution providing a framework to achieve this goal. It states "the life, safety and health of residents, employees and visitors to Bellevue is the City Council's highest priority." **By participating in one of the recommendations above, you are helping the City of Bellevue in our efforts to make our streets safer for everyone.**

## MORE INFORMATION

Find out more about these recommendations in our **Residential Traffic Guidebook** or by visiting the Neighborhood Traffic Safety Services website.

**GUIDEBOOK:** [BellevueWA.gov/ResidentialTrafficGuidebook](http://BellevueWA.gov/ResidentialTrafficGuidebook)

**WEBSITE:** [BellevueWA.gov/NTSS](http://BellevueWA.gov/NTSS)

