

Preparing for construction

What's next?

- Complete design of light rail stations and track
- Acquire the property needed to build East Link
- Obtain permits needed to build the project
- Hire contractors to build the 14-mile alignment
- Hold open houses to inform the public of what to expect during construction
- Work with utility providers to reroute services
- Survey key stakeholders to better understand construction impacts

Stay Involved

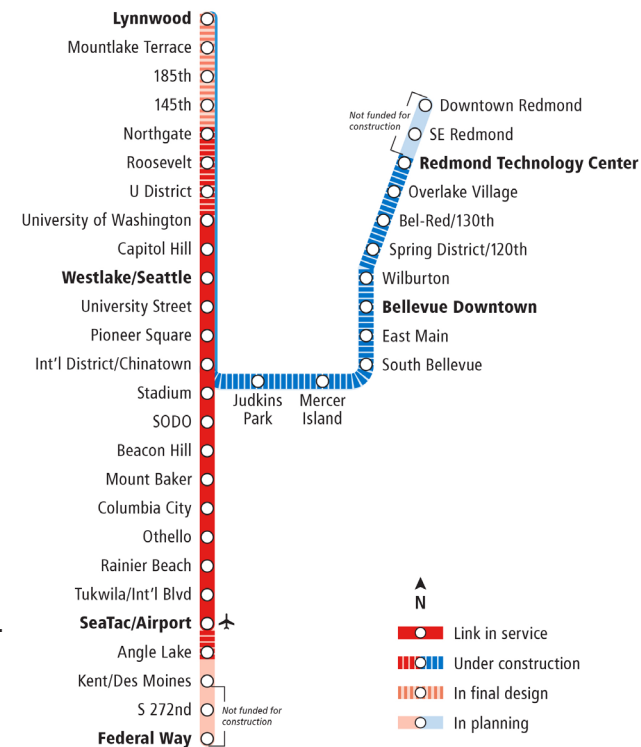
Sound Transit will keep you informed before and during construction activity

- Attend open houses prior to construction to learn more about how we build light rail, including phasing and methods, schedule, haul routes and traffic management.
- Sound Transit will notify neighboring residents and businesses well in advance of upcoming work and coordinate activities with partner agencies.

For more information

- Visit the website during construction for frequent updates: soundtransit.org/eastlink
- Subscribe to e-mail and text alerts: www.soundtransit.org/Subscribe-to-alerts.
- Call the 24-7 construction hotline (888-298-2395) to speak to East Link Community Outreach staff or email eastlink@soundtransit.org.
- Contact the Community Outreach staff at (206) 398-LINK to schedule a briefing or presentation for your organization.

System map



East Link Extension

Community Guide to Construction

Spring 2016

East Link Extension will benefit local communities and support regional growth with fast, frequent and reliable light rail service, connecting Seattle to the Eastside's biggest population and employment centers. The project builds on the Link light rail system that runs between Sea-Tac Airport and downtown Seattle. East Link is one of several new Sound Transit light rail extension projects to the north, south and east from Seattle.

Construction is coming!

Sound Transit plans to begin building East Link in 2016. Learn more about how Sound Transit builds light rail and what to expect during construction.

Easing the impacts of construction

Sound Transit is committed to being a good neighbor during construction. We will work to manage impacts on surrounding communities by:

1. Maintaining a safe construction site
2. Keeping people moving
3. Protecting the environment
4. Implementing a business relations program
5. Maintain a 24-7 construction telephone hotline



Sound Transit works with communities to attract visitors during construction

2006-2011 2011-2015 2015 2016-2022 Targeted 2022 Targeted 2023

Planning and environmental review

Final design

Start of advanced utility relocation

Heavy civil construction

Testing & pre-operations

East Link in service

To speak with Sound Transit about the proposed Link light rail mass transit project in East King County call 1-800-823-9230 during regular business hours.

Para hablar con Sound Transit acerca del propuesto proyecto de transporte público de Link Light Rail en el este de King County, llame al 1-800-823-9230 durante horas normales de oficina.

要向 Sound Transit 瞭解或討論擬在 East King County 進行的 Link light rail 公共交通項目，請在正常的工作時間致電 1-800-823-9230。

Upang makipag-usap sa Sound Transit ukol sa iminungkahing Link light rail na proyektong sasakyang pangmasa sa Silangang King County tawagan ang 1-800-823-9230 habang sa karaniwang mga oras ng pangangalakal.

Если вы хотите высказать сотрудникам Sound Transit свои соображения по поводу предлагаемого проекта линии общественного транспорта Link light rail в восточной части King County, звоните по телефону 1-800-823-9230 в обычные рабочие часы.

Muốn nói chuyện với Sound Transit về đề án chuyên chở công cộng đường hòa xa nhẹ Link tại Phía Đông Quận King, hãy gọi số 1-800-823-9230 trong giờ làm việc thường lệ.

درمورد مسیر پیشنهاد شده برای پروژه ترانزیت سبک راه اهنی در کینگ شرقی با شماره 1-800-823-9230 در ساعات کاری تماس بگیرید برای گفتگو با سوند ترانزیت



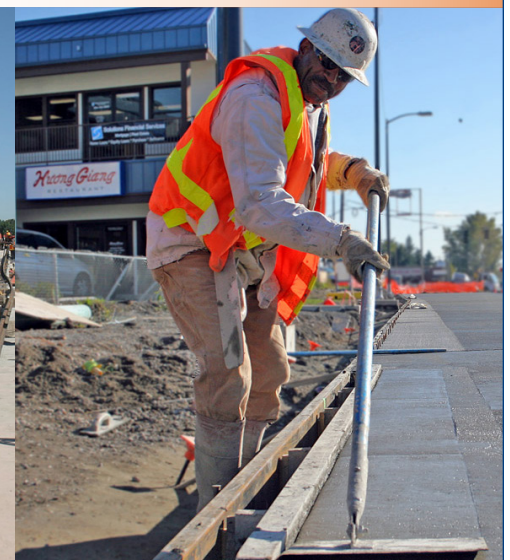
Constructing elevated guideway



Laying light rail tracks



Restoring roadway and driveways



Sound Transit plans, builds, and operates regional transit systems and services to improve mobility for Central Puget Sound.
Sound Transit | 401 S. Jackson St. | Seattle, WA 98104-2826 | 1-800-201-4900 / TTY Relay: 711 | eastlink@soundtransit.org | soundtransit.org



Typical light rail construction sequence

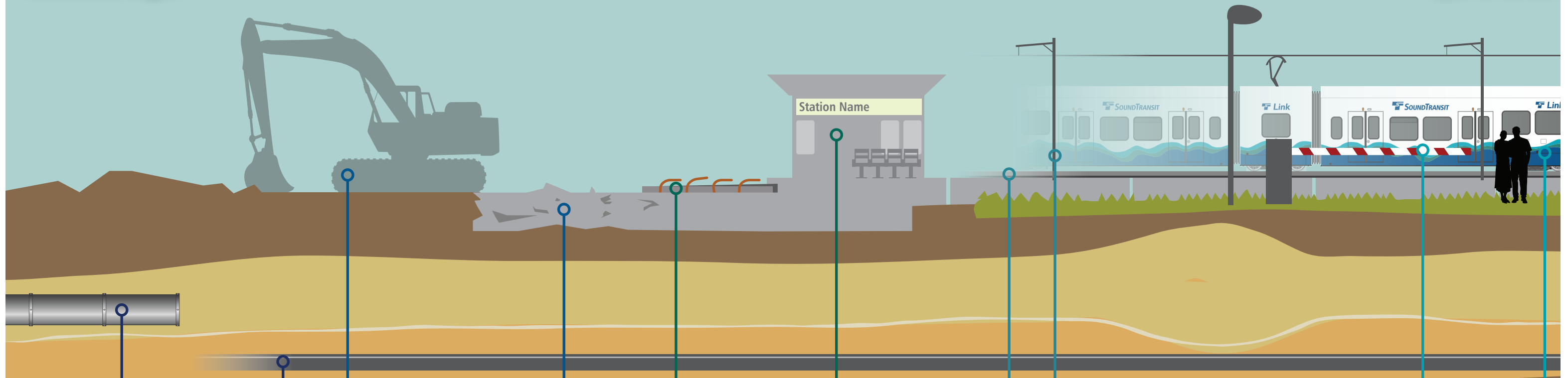
East Link construction includes building at-grade, elevated, and tunnel light rail infrastructure

2016

Construction begins

2023

Open for service



Relocate utilities

Utility relocation work includes replacing aging utilities in the project area and relocating utilities so they can be accessed for maintenance and repair.

Prepare the work zone

Crews must clear buildings and soil and prepare the work zone for East Link construction crews. This includes erecting barriers and fencing to keep the work zone safe.

Build station and supporting infrastructure

Next, Sound Transit lays the foundations necessary to run light rail track and builds stations and supporting infrastructure.

Install track and power

Sound Transit installs track and wire while placing poles and ancillary structures that power the system and operate the signals.

Install and test systems

Before light rail opens to passengers, Sound Transit completes a safety certification process testing communications, safety and emergency systems, as well as signals and crossing gates.

