

Welcome!



ReidMiddleton

OPEN HOUSE
Intersection Study on SE 8th Street &
Lake Hills Connector

March 26, 2019 | 5:30–7:30pm
Bellevue Botanical Garden Educational Center

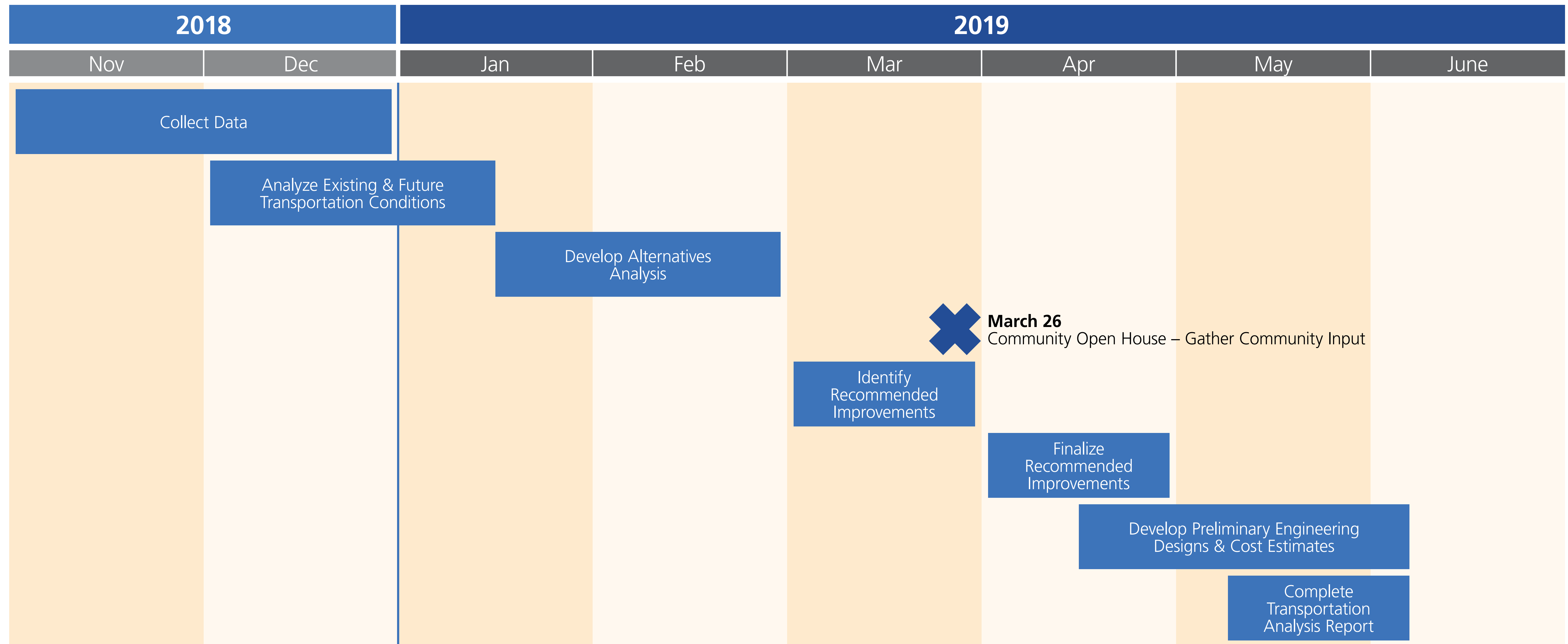
Purpose

Identify improvements at the three intersections to address safety, traffic flow, & non-motorized mobility while considering cost, property, & environmental impacts

Possible Future Steps

- Secure funding
- Complete design
- Construct improvements

Planning Process & Schedule



ReidMiddleton

Purpose, Planning Process, & Schedule

OPEN HOUSE – Intersection Study on SE 8th Street & Lake Hills Connector – City of Bellevue



The SE 8th St/Lake Hills Connector Corridor is a major arterial that provides access to residential neighborhoods, schools, parks, and employment centers, and travels between I-405 and Lake Hills. The three existing signalized intersections that are being evaluated for this study include:

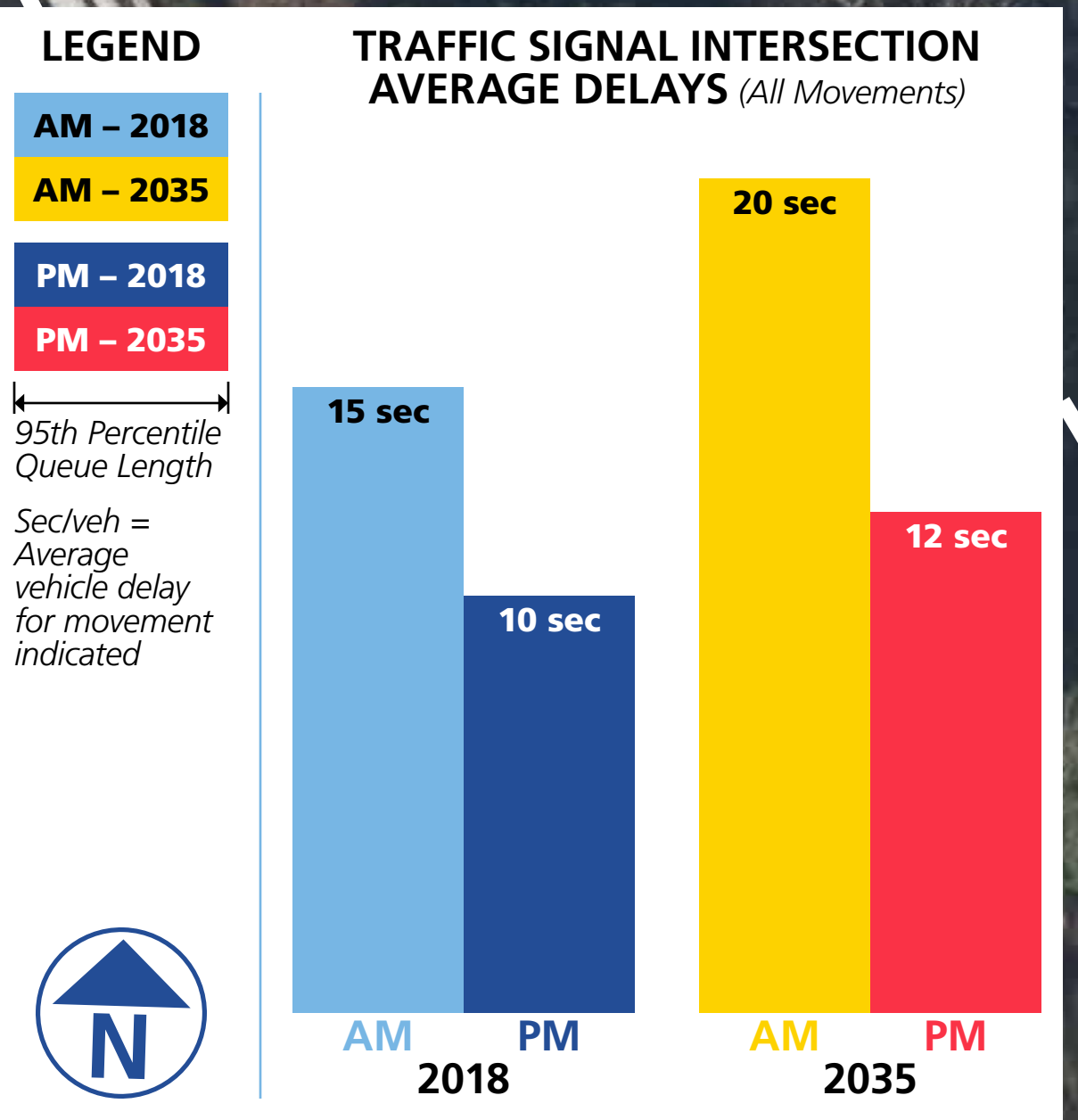
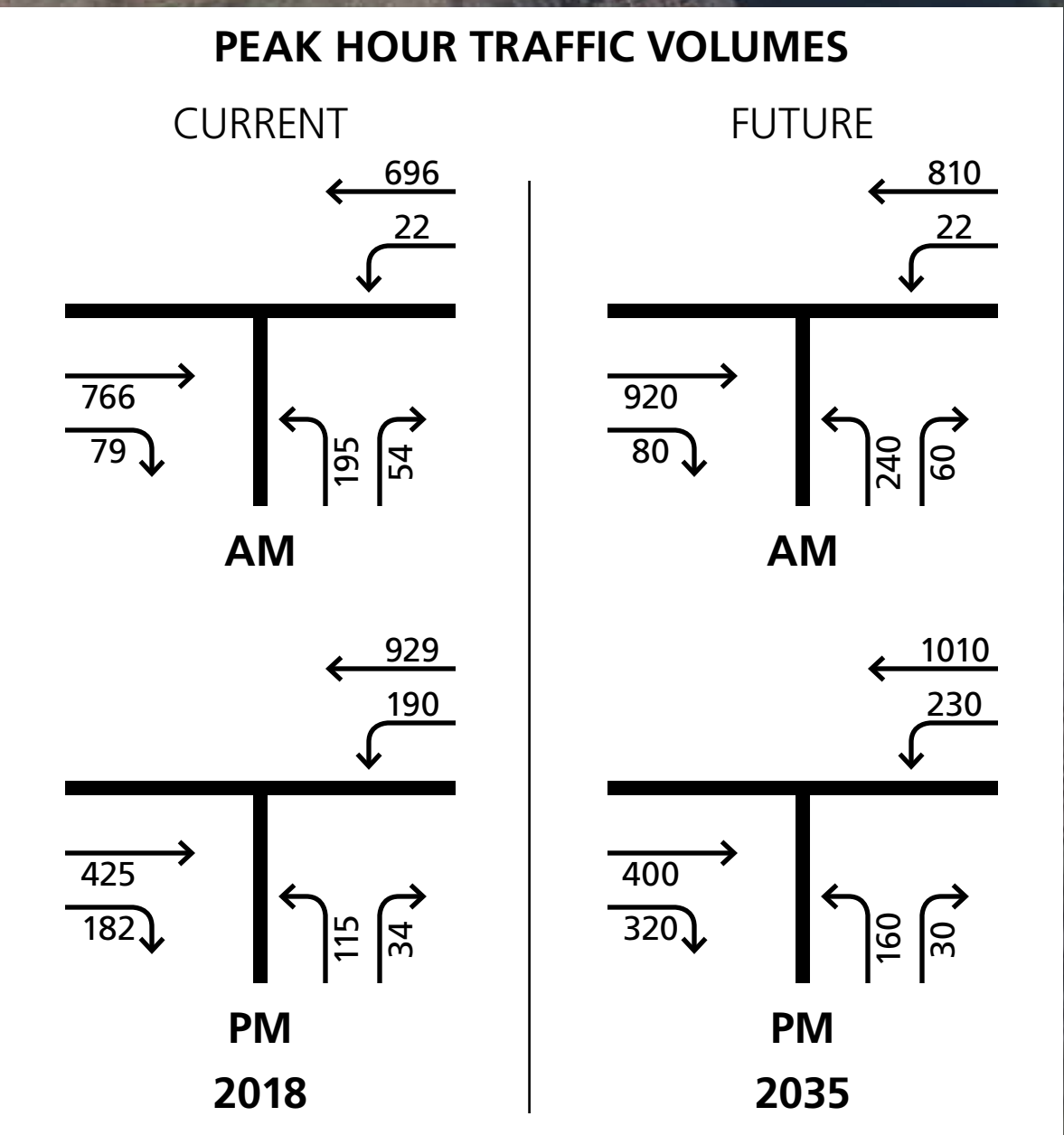
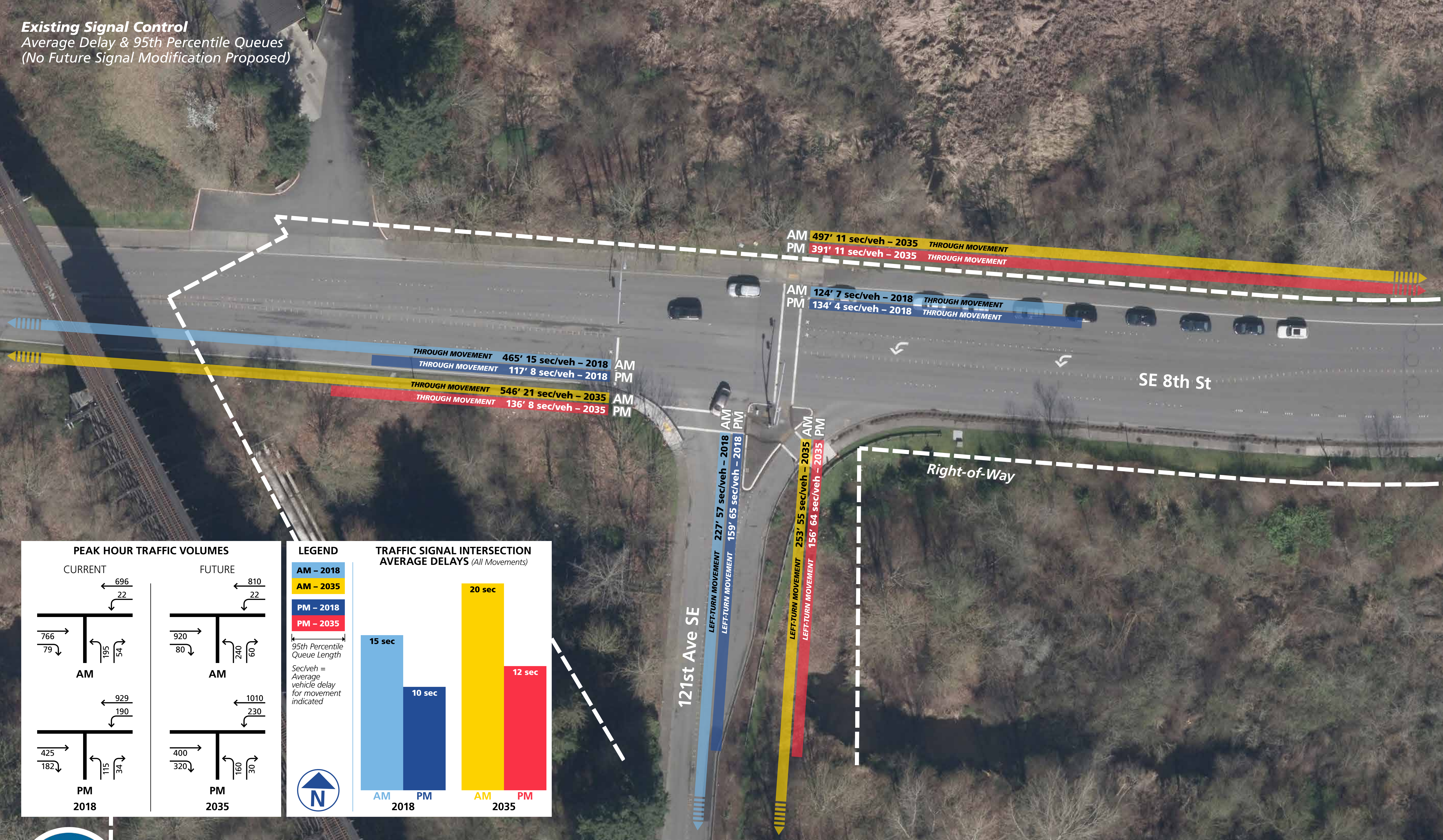
- SE 8th Street / 121st Avenue SE
- SE 8th Street / Lake Hills Connector
- Lake Hills Connector / Richards Road



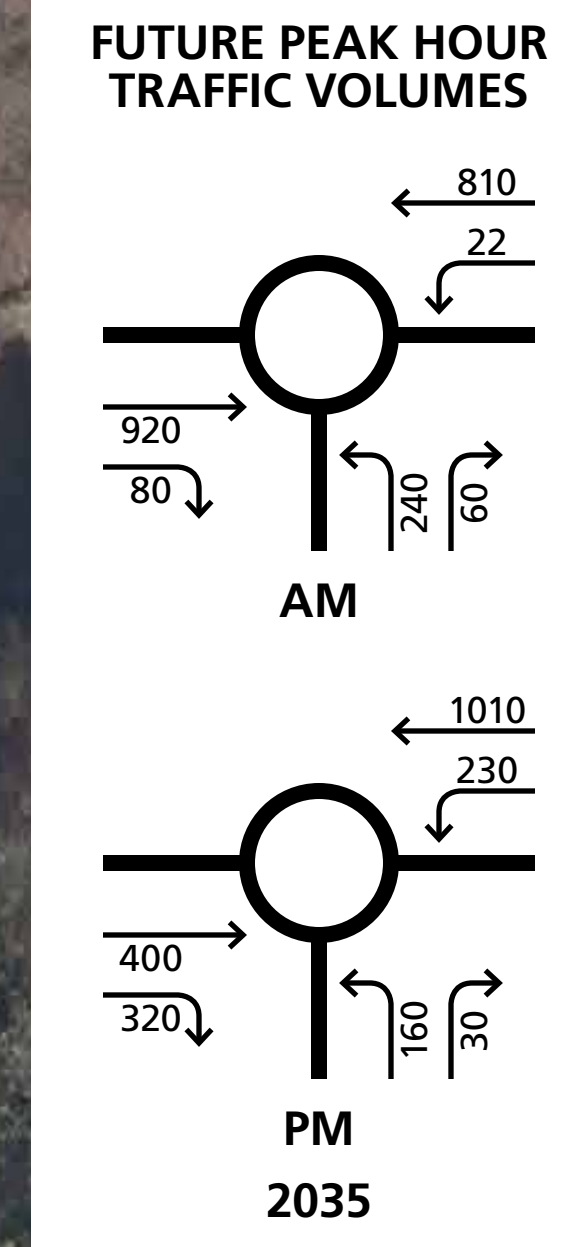
Study Intersections

OPEN HOUSE – Intersection Study on SE 8th Street & Lake Hills Connector – City of Bellevue

Existing Signal Control
Average Delay & 95th Percentile Queues
(No Future Signal Modification Proposed)



Roundabout Control
Average Delay & 95th Percentile Queues

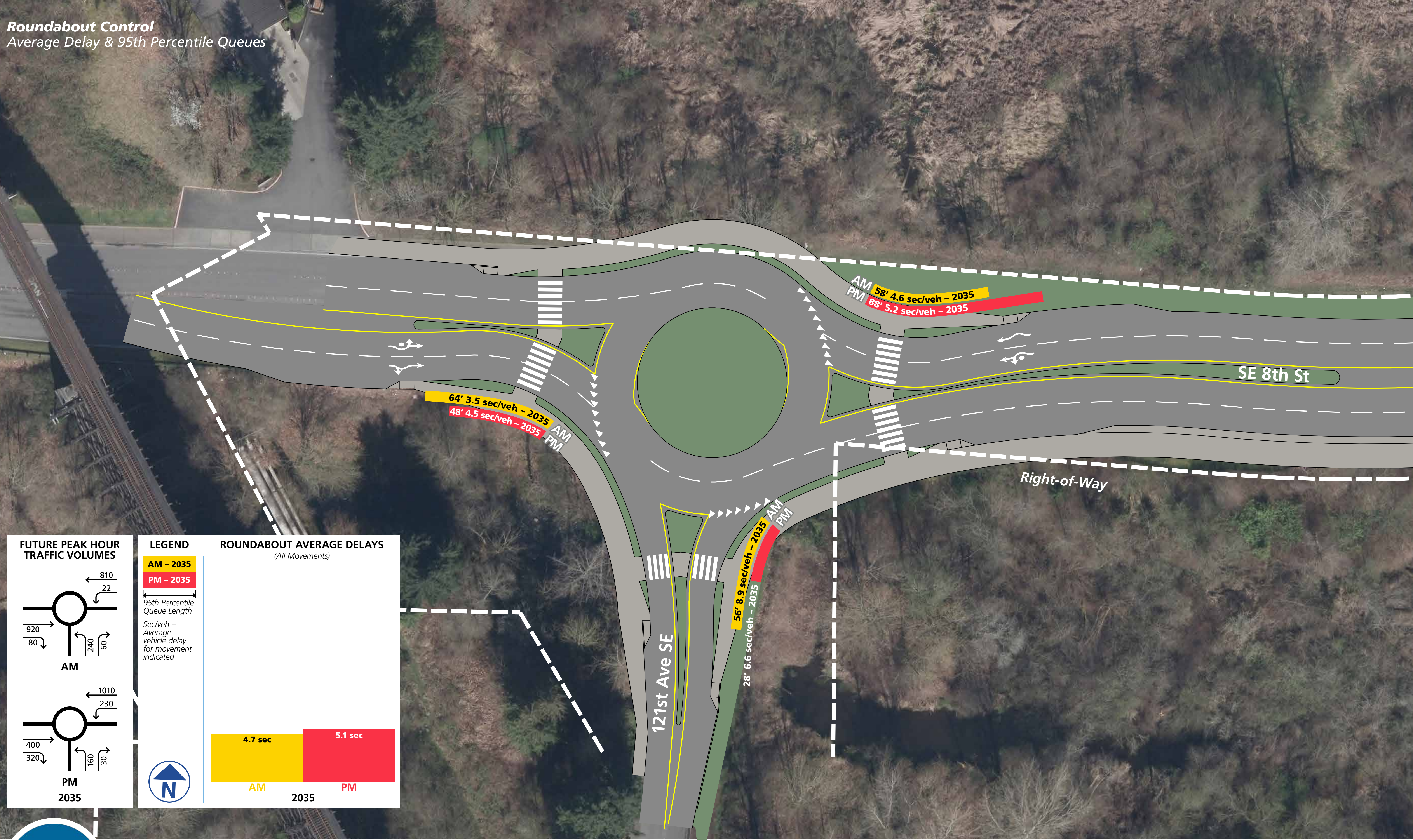
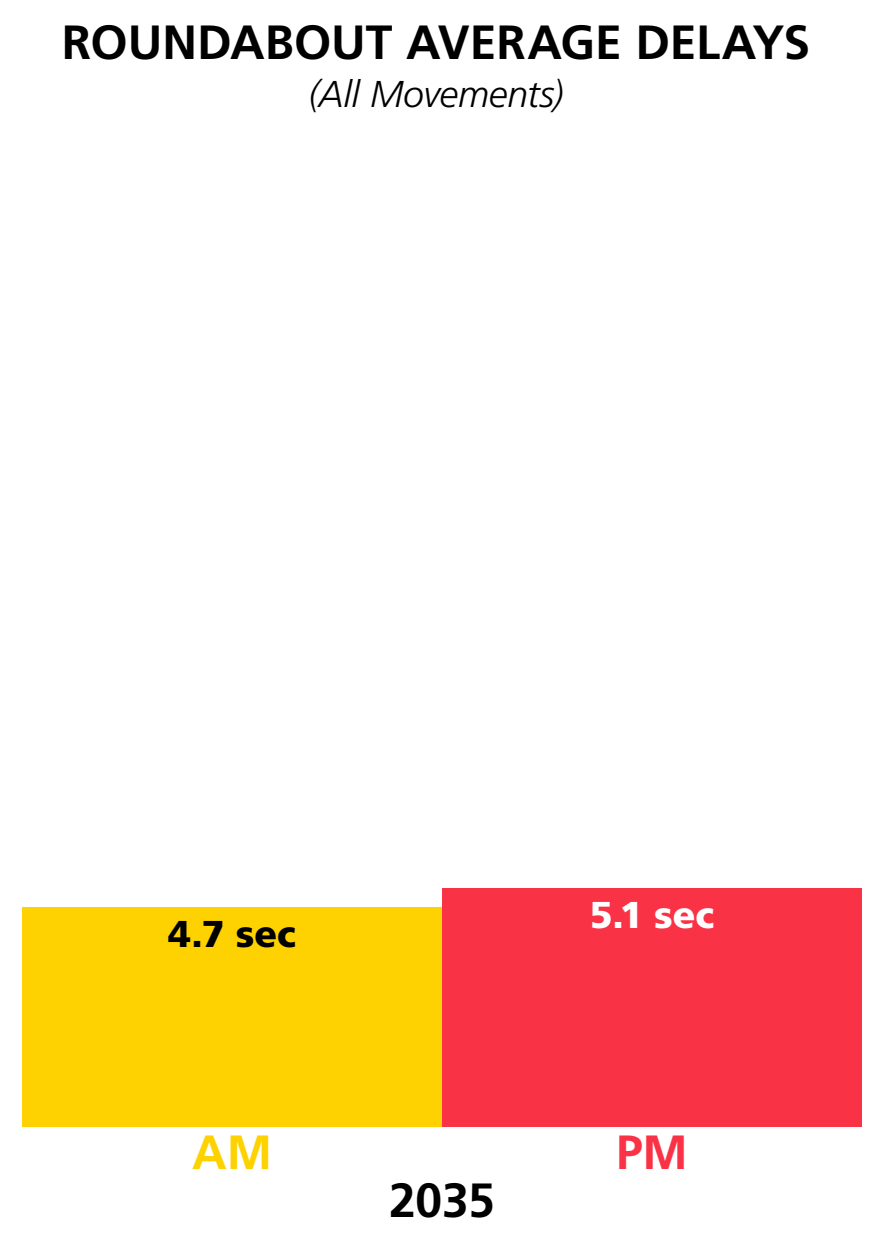


LEGEND

AM - 2035
PM - 2035

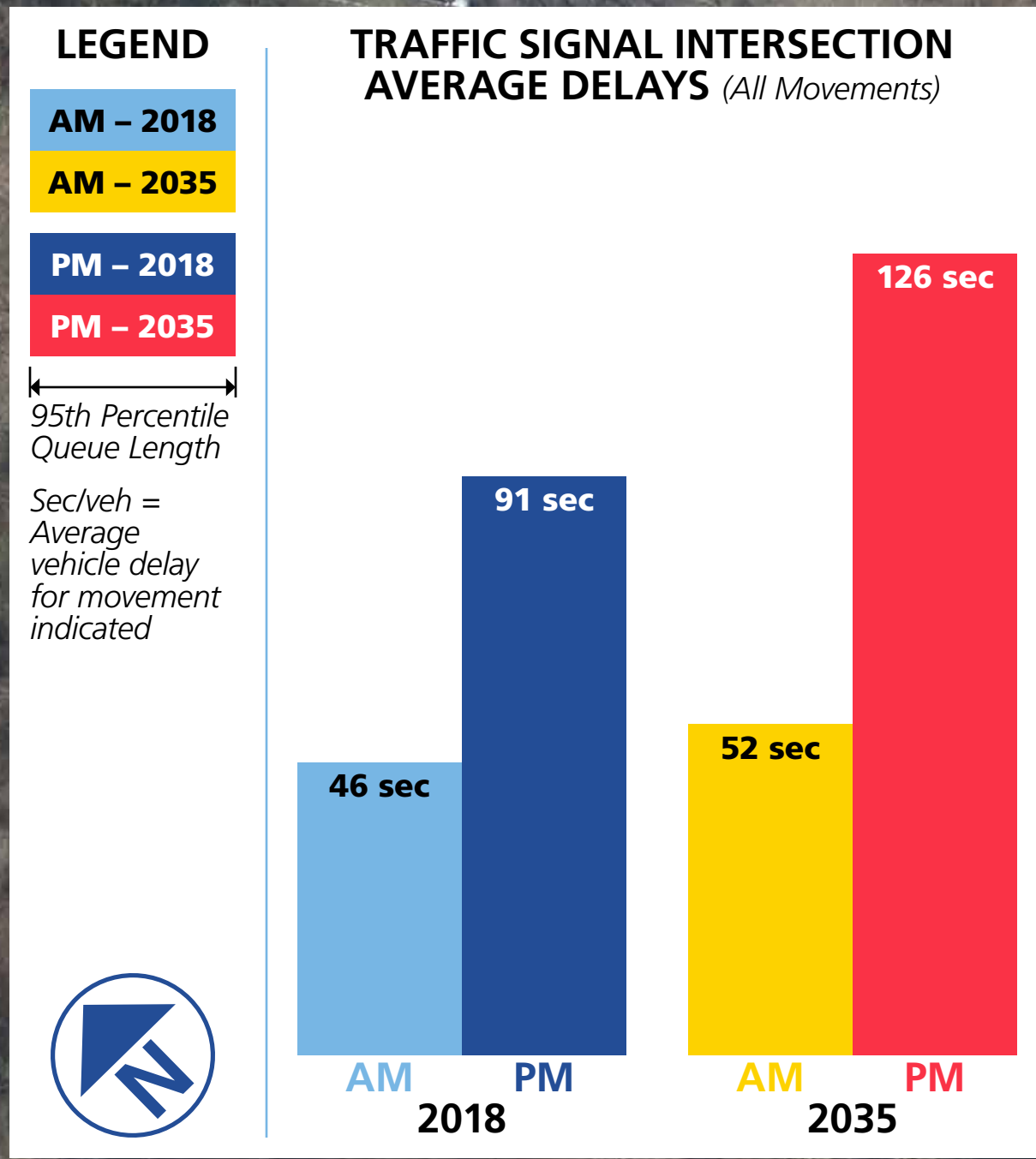
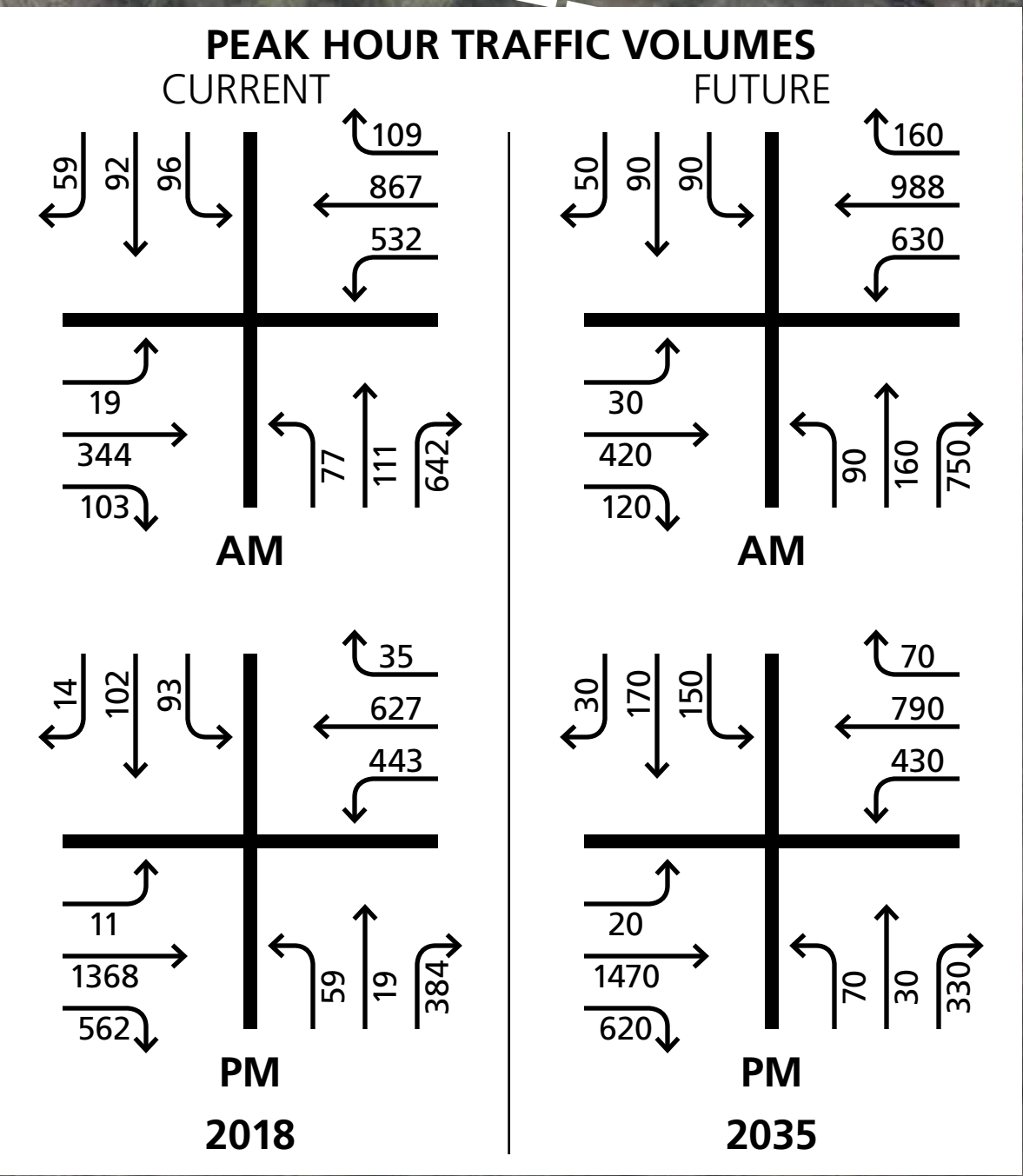
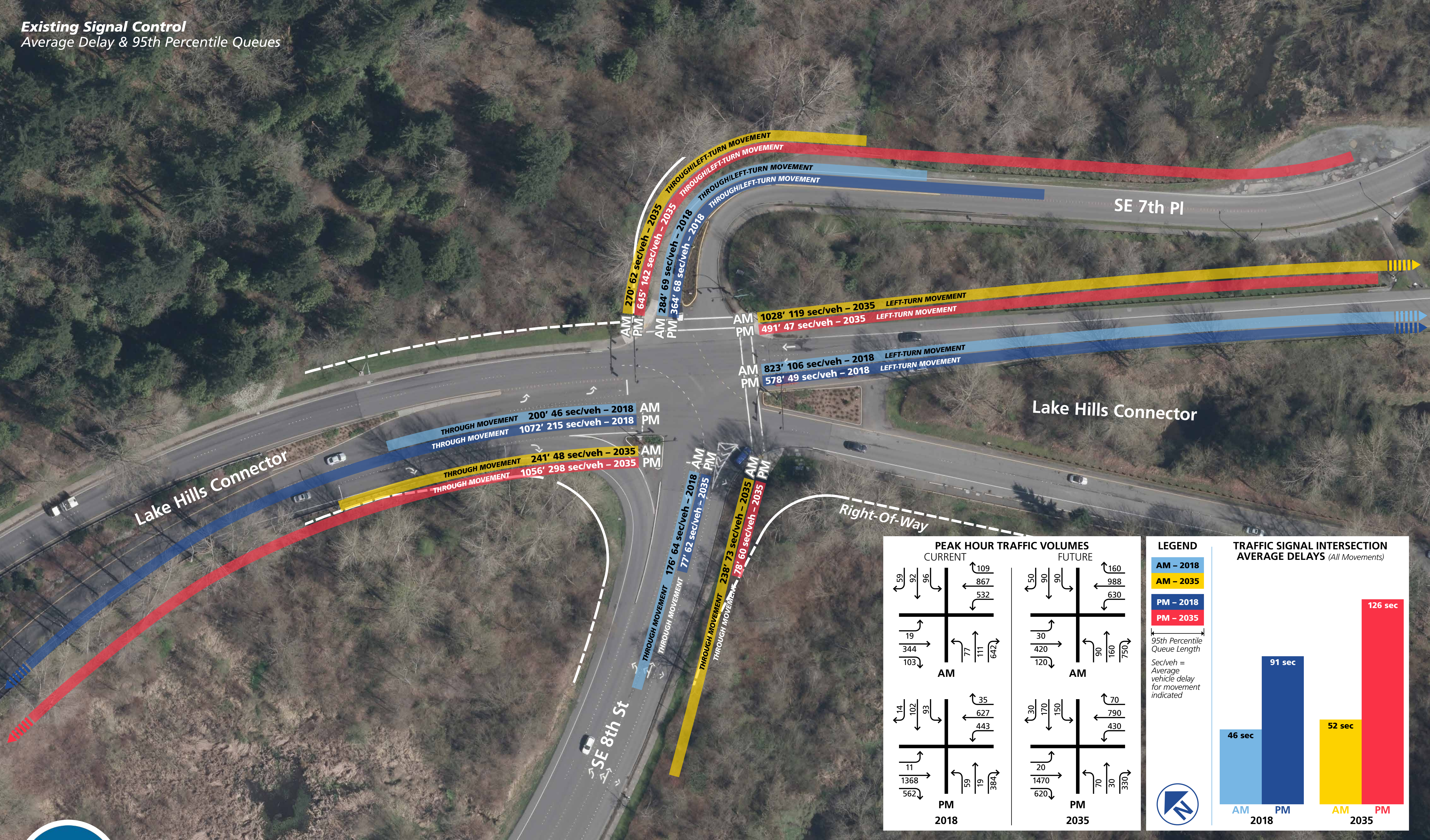
95th Percentile Queue Length

Sec/veh = Average vehicle delay for movement indicated

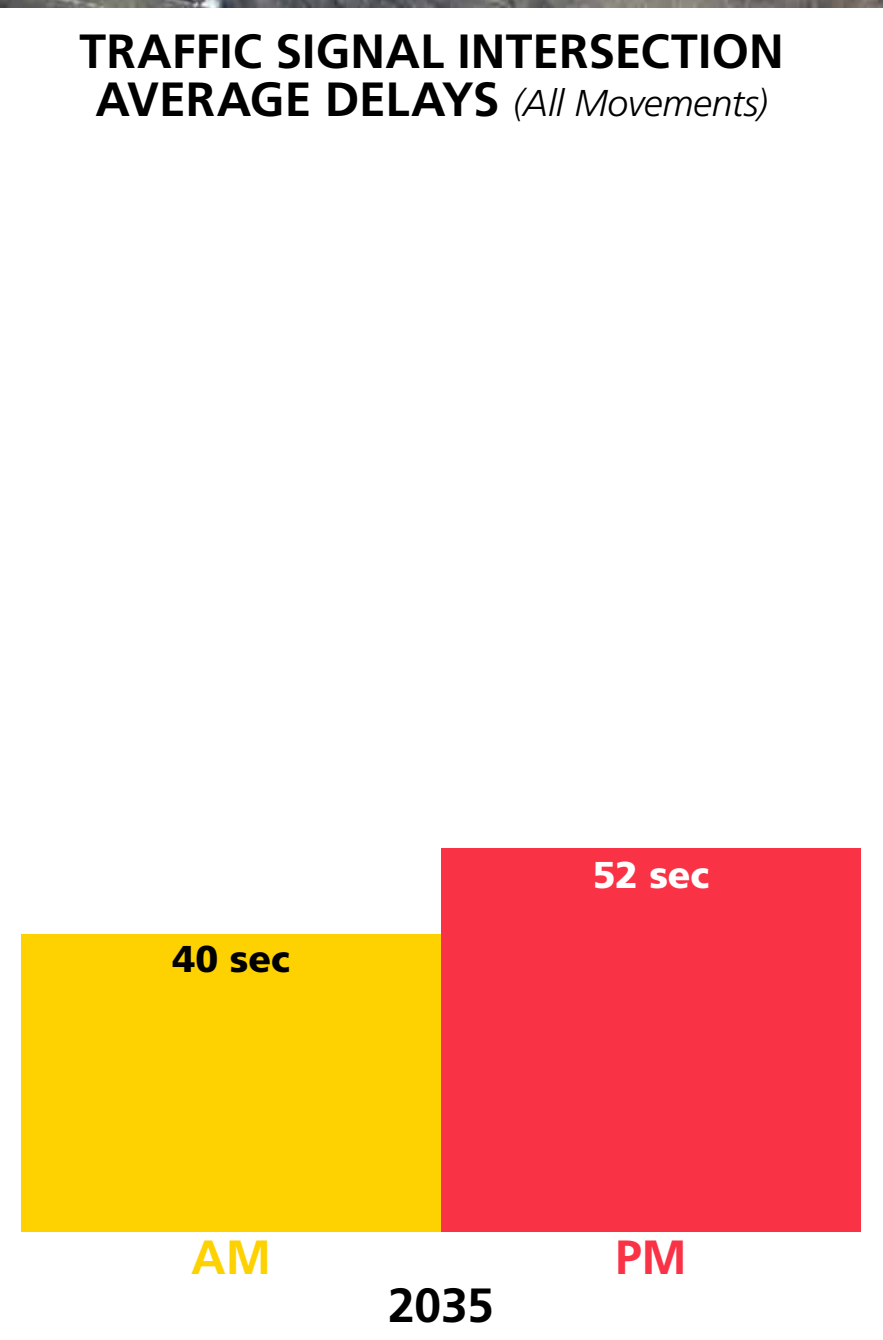
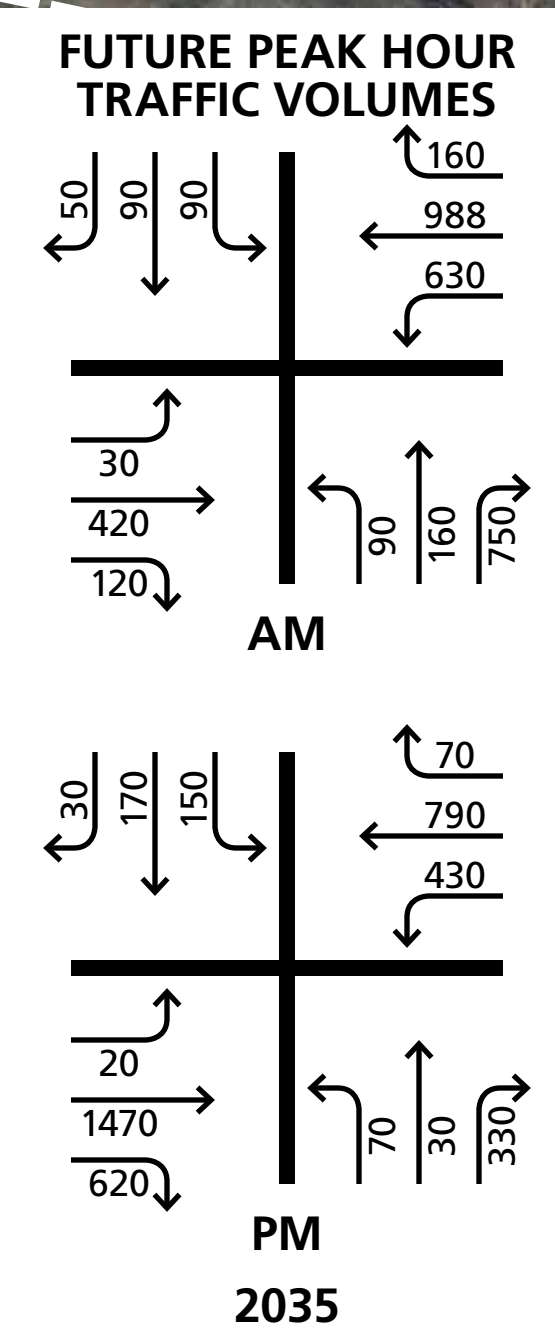
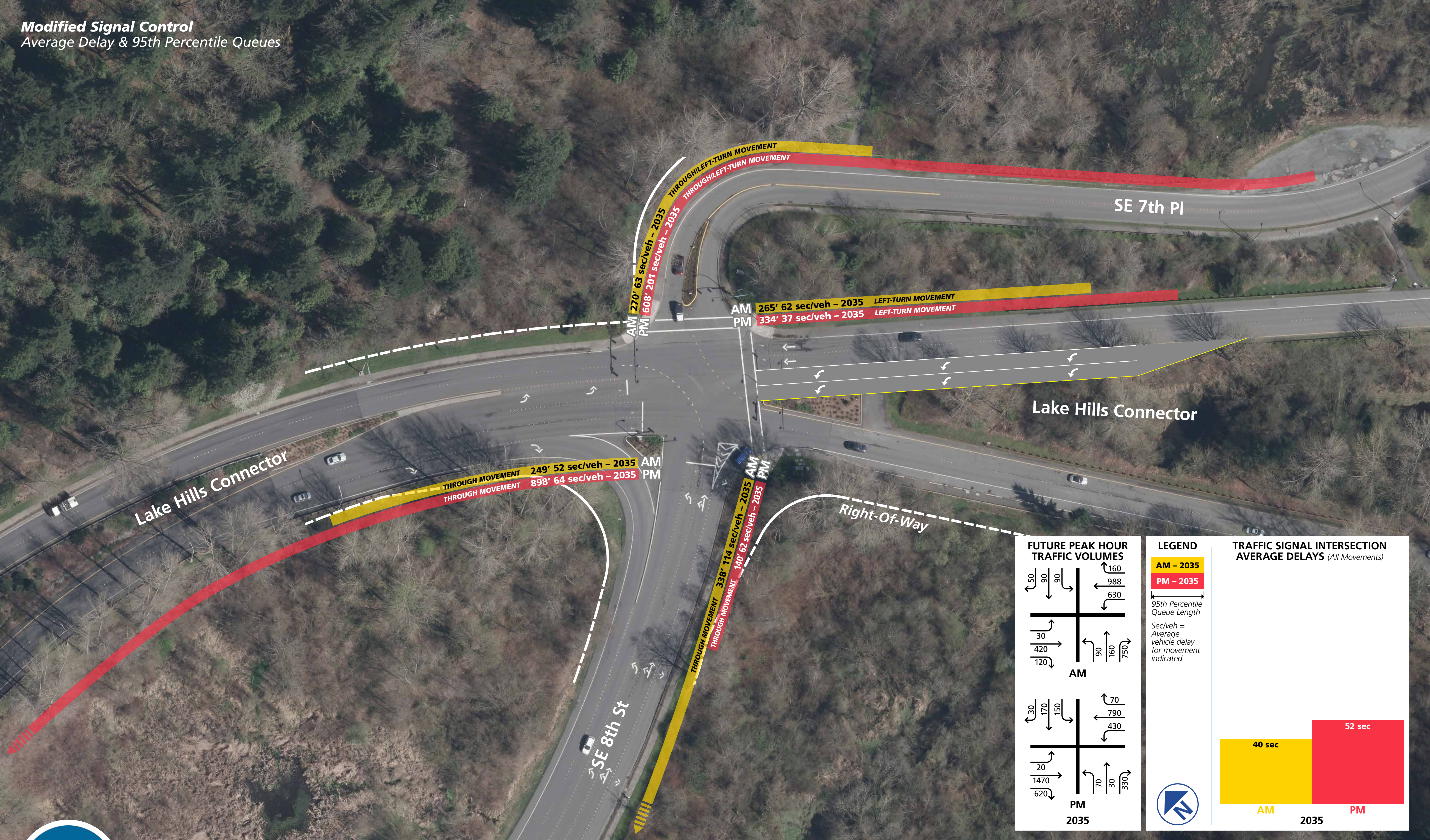


ReidMiddleton

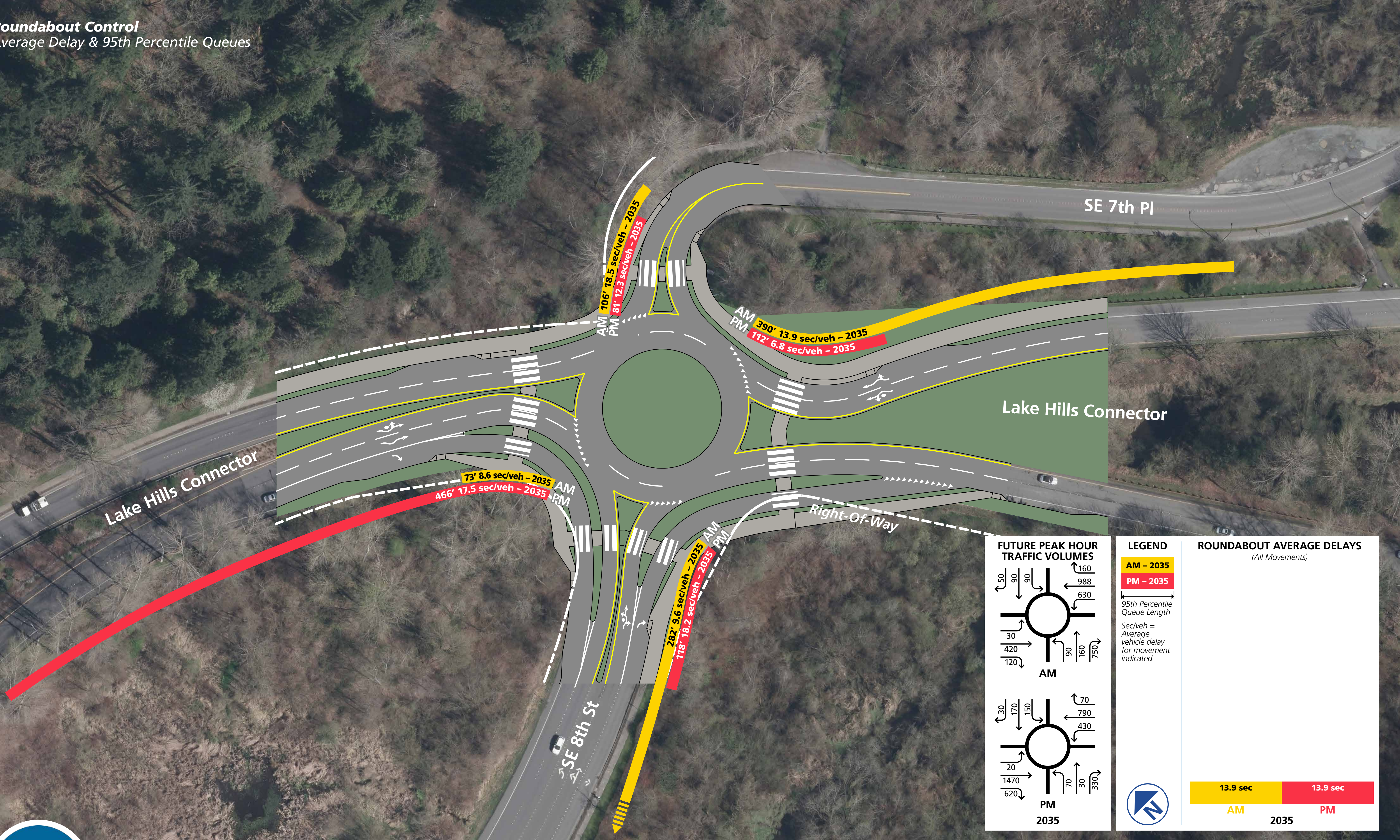
Existing Signal Control
Average Delay & 95th Percentile Queues



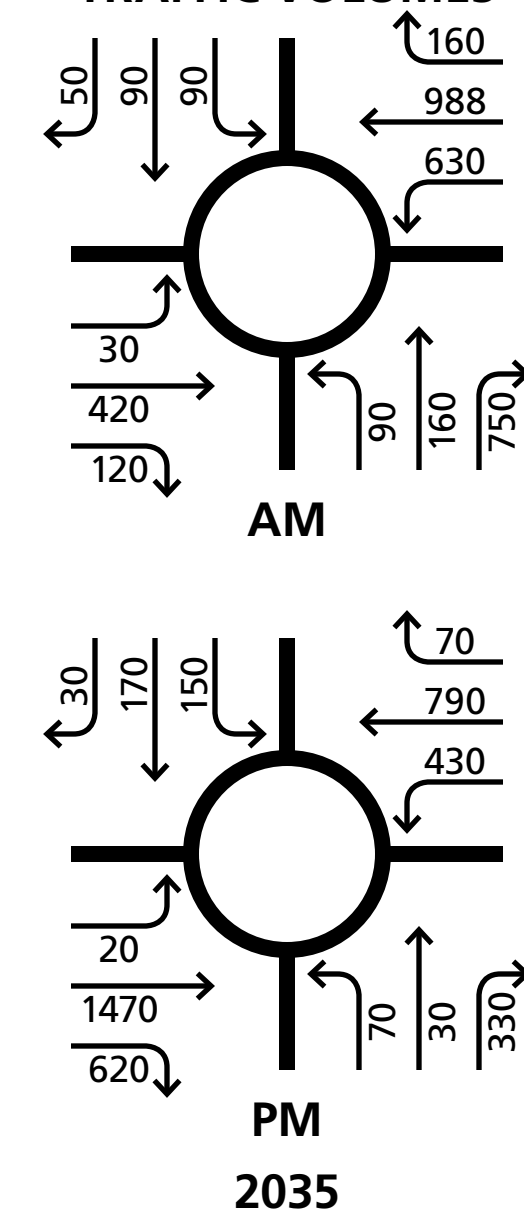
Modified Signal Control
Average Delay & 95th Percentile Queues



Roundabout Control
Average Delay & 95th Percentile Queues

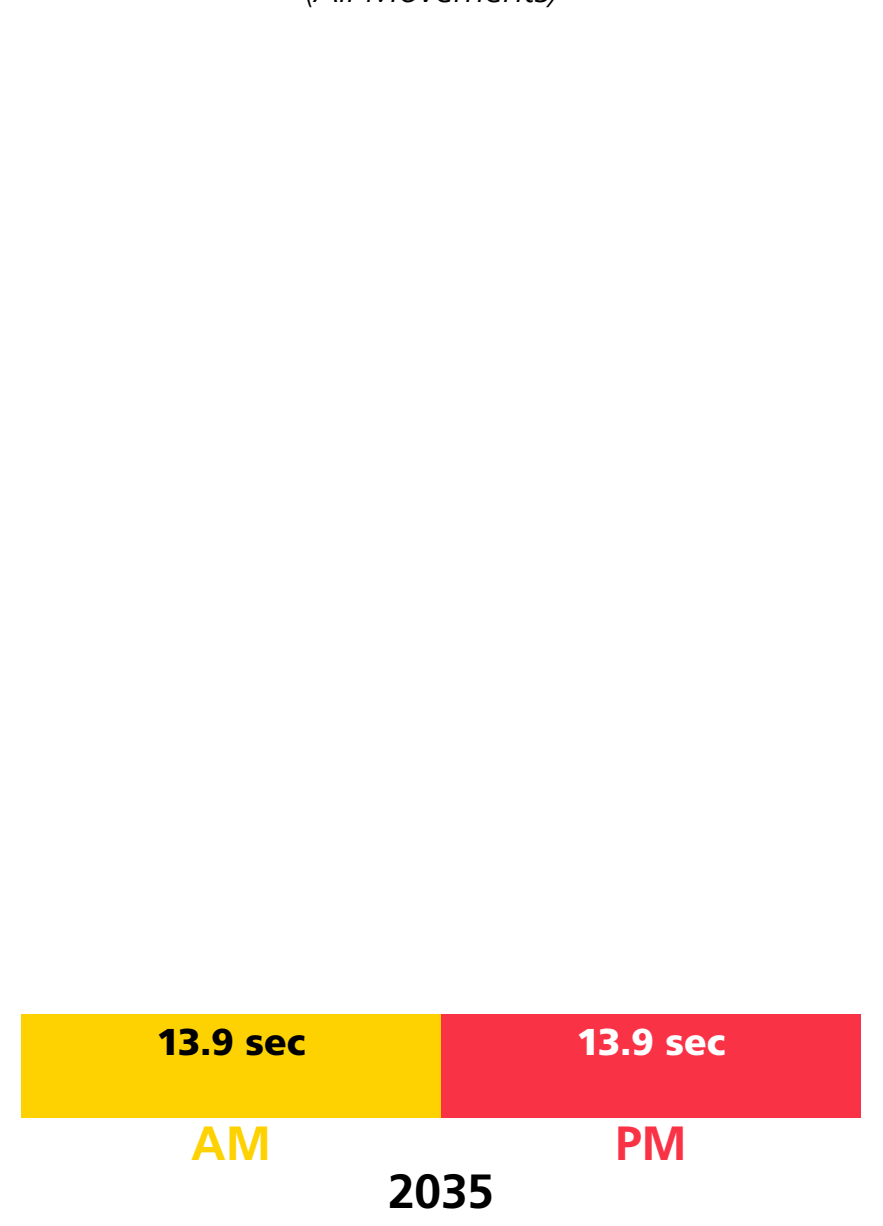


FUTURE PEAK HOUR TRAFFIC VOLUMES

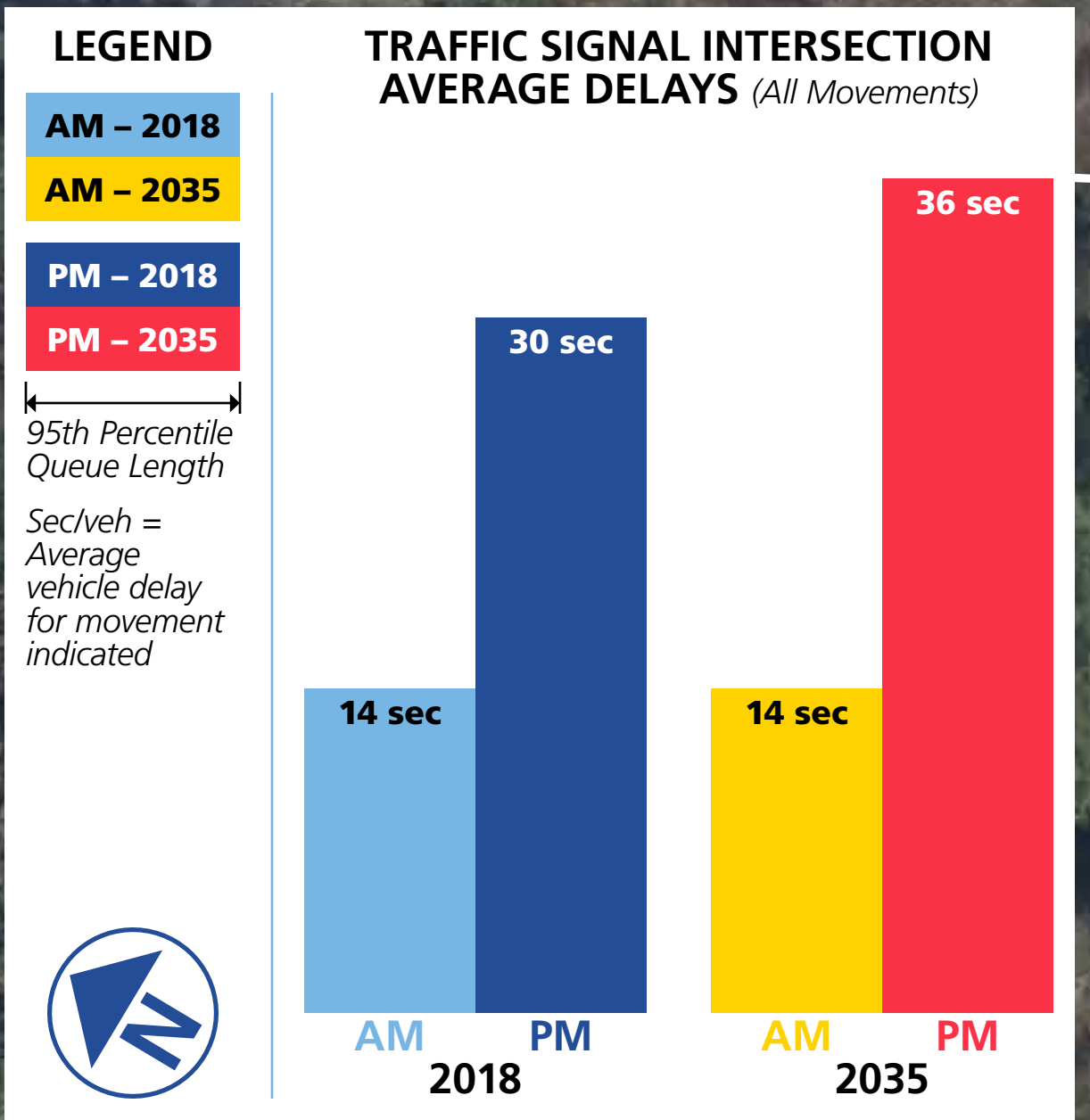
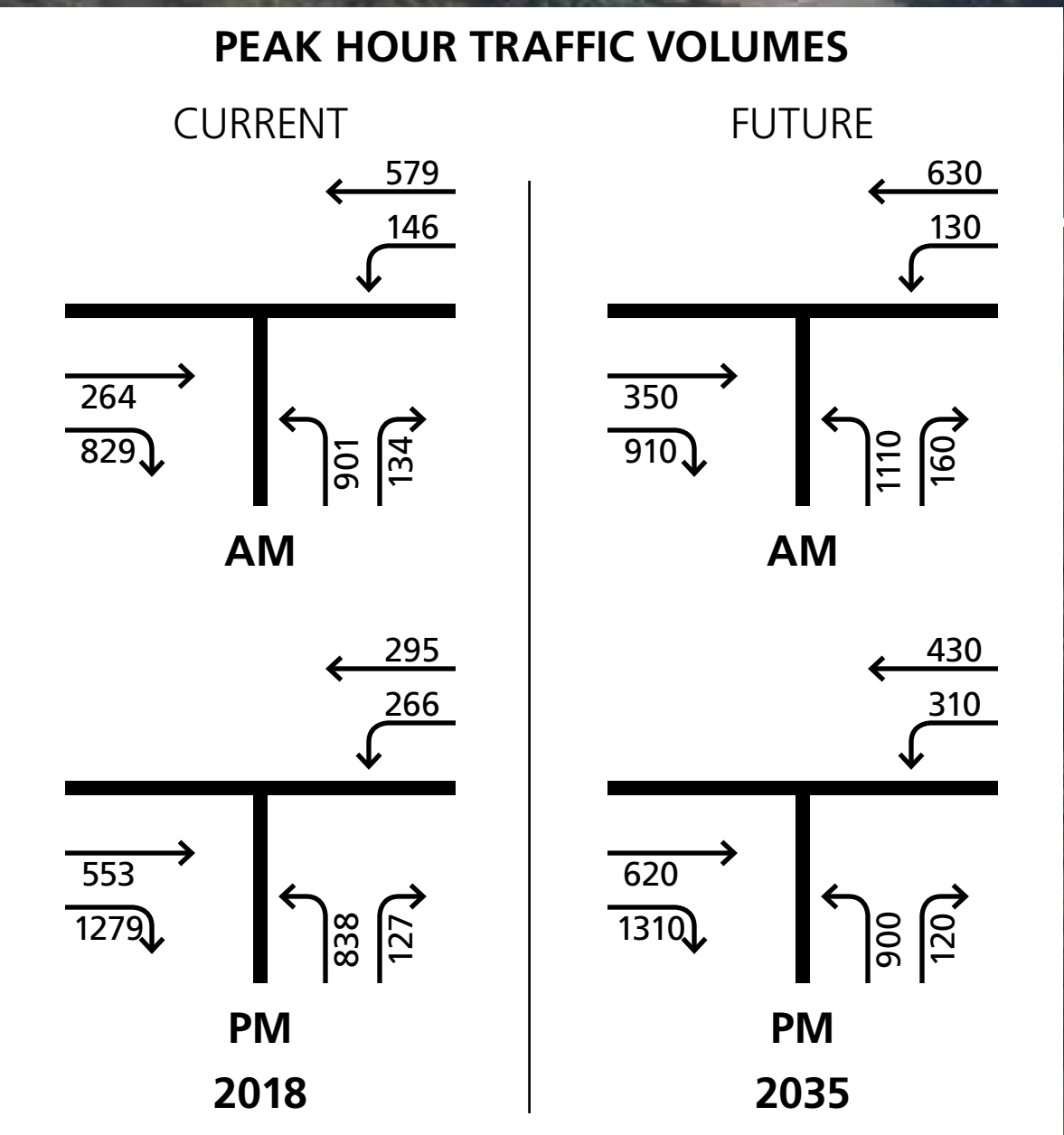
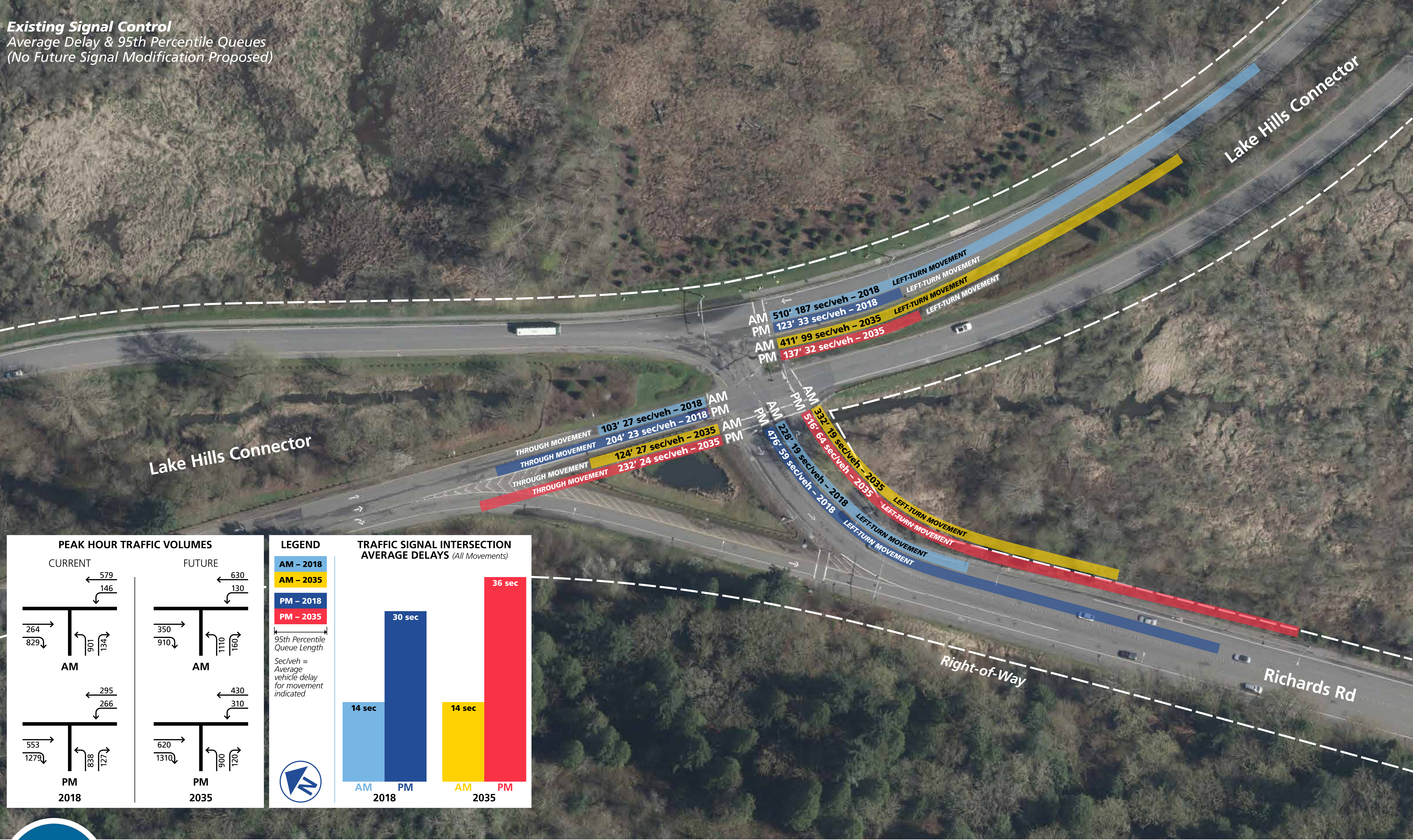


LEGEND
AM - 2035
PM - 2035
 95th Percentile Queue Length
 Sec/veh = Average vehicle delay for movement indicated

ROUNDBOULT AVERAGE DELAYS
(All Movements)



Existing Signal Control
Average Delay & 95th Percentile Queues
(No Future Signal Modification Proposed)

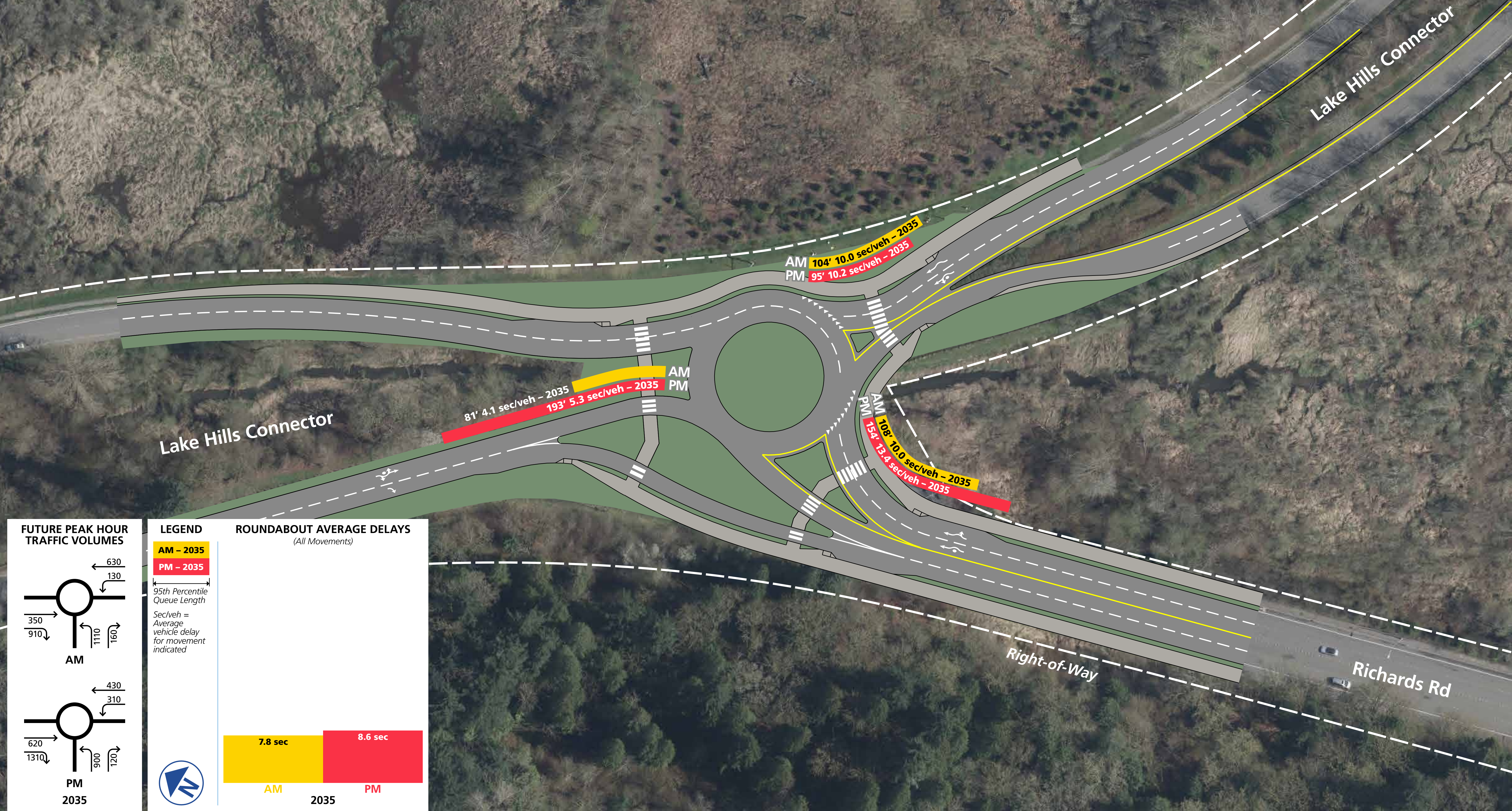


ReidMiddleton

Lake Hills Connector/Richards Road – Existing Condition (2018) & No Build (2035)

OPEN HOUSE – Intersection Study on SE 8th Street & Lake Hills Connector – City of Bellevue

Roundabout Control
Average Delay & 95th Percentile Queues



FUTURE PEAK HOUR TRAFFIC VOLUMES

LEGEND

AM - 2035 (Yellow)

PM - 2035 (Red)

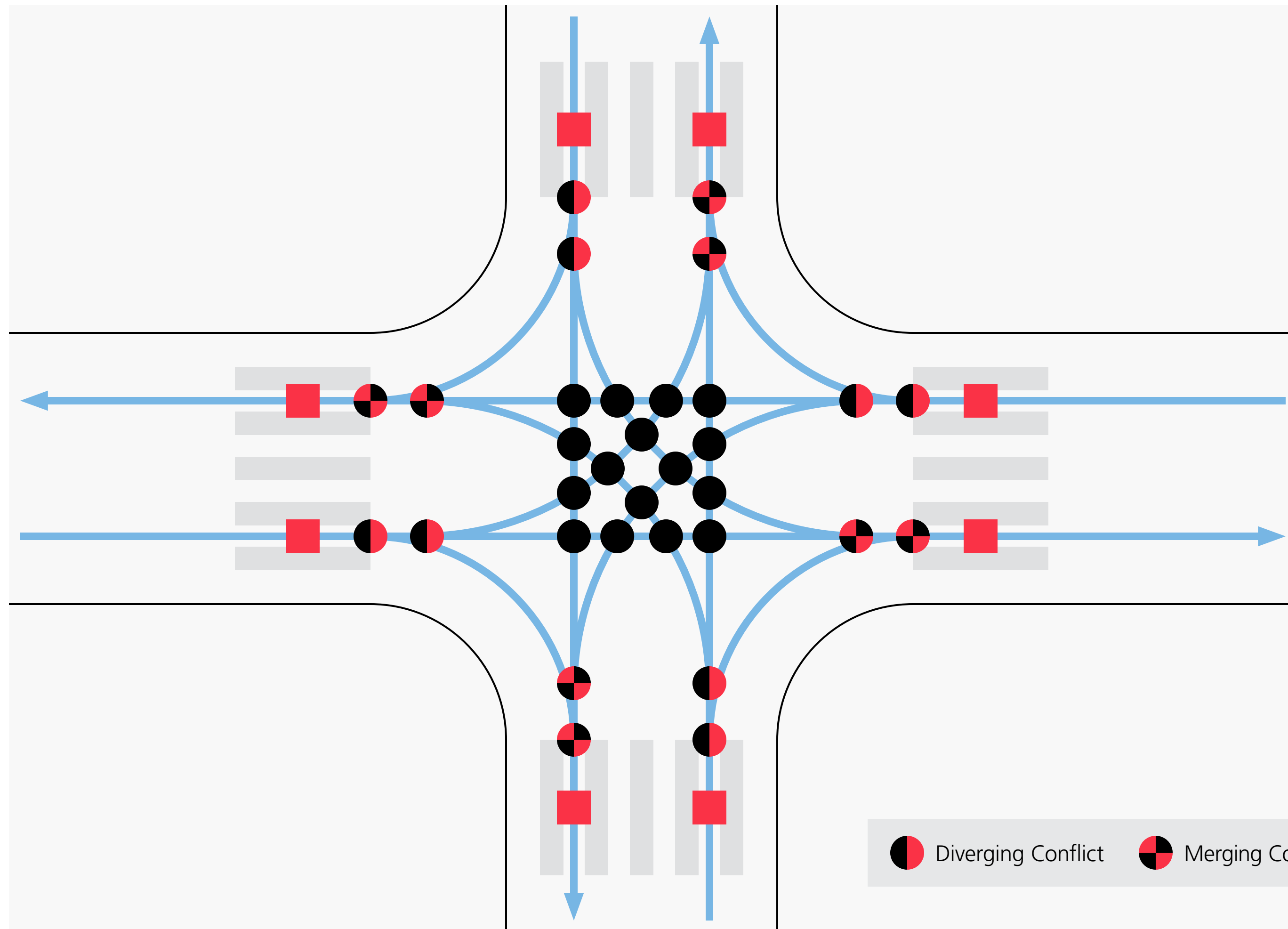
95th Percentile Queue Length

Sec/veh = Average vehicle delay for movement indicated

ROUNDABOUT AVERAGE DELAYS (All Movements)

7.8 sec	8.6 sec
AM	PM
2035	

Traffic Signal



Roundabout

