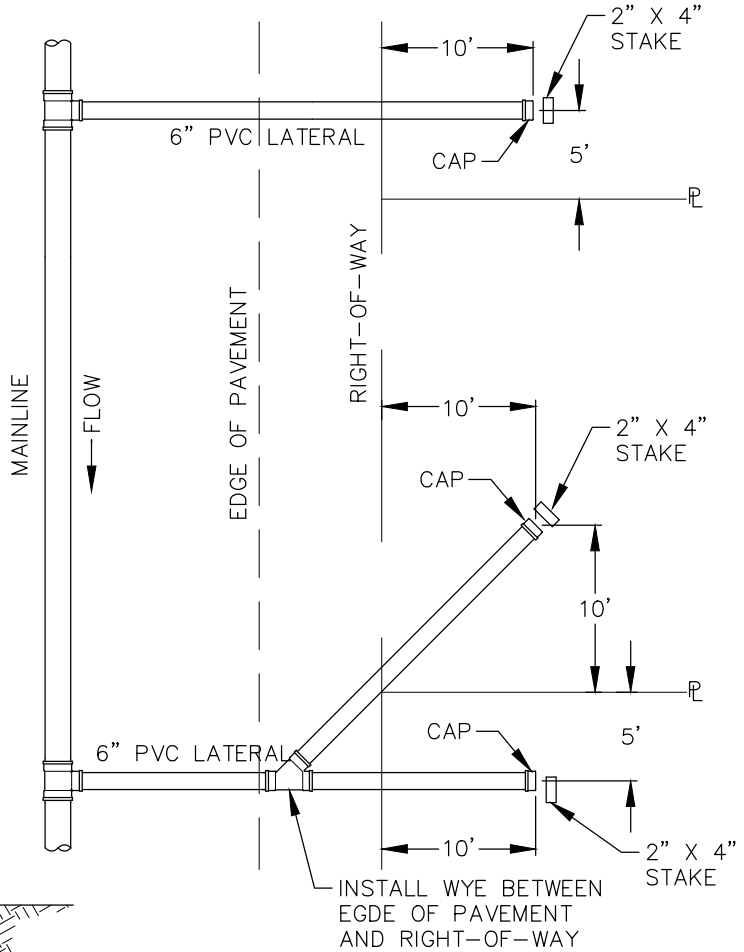


SINGLE SERVICE



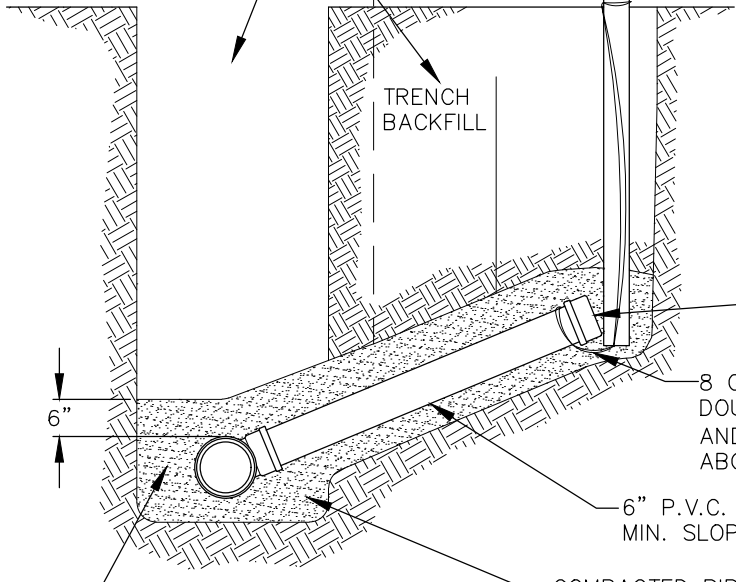
2" X 4" STAKE BURIED AT DEPTH OF PIPE INVERT, PAINTED WHITE ABOVE GROUND. EXTEND A MINIMUM OF 3 FEET ABOVE GRADE.

MARK 2" X 4" STAKE WITH "SEWER", DEPTH FROM PIPE INVERT TO FINAL GRADE, AND DISTANCE FROM MAIN TO END OF LATERAL.

FOR TRENCH SPECS. SEE STANDARD DETAIL S-14

E.P. LINE
ROW LINE

6" DP R S E W E R



GASKETED CAP

8 GAUGE WIRE TO BE DOUBLED AROUND PIPE AND 2" X 4" STAKE AT OR ABOVE FINAL GRADE.

6" P.V.C. PIPE
MIN. SLOPE 2%

COMPACTED PIPE ZONE BEDDING
PER WSDOT STD. SPEC. 9-03.12(3).

FOR PIPE ZONE BEDDING SPECS. SEE STANDARD DETAIL S-15

JOINT USE SERVICE

NOTES:

1. WHERE SIDE SEWER CONNECTS TO MANHOLE: INVERT OF SIDE SEWER SHALL BE EQUAL TO OR ABOVE MAIN SEWER CROWN, BUT NOT TO EXCEED 18" ABOVE INVERT OF MAIN SEWER.
2. UNLESS OTHERWISE INDICATED ON PLAN, SIDE SEWER SHALL BE MINIMUM OF 6' DEEP AT PROPERTY LINE, OR 5' LOWER THAN THE LOWEST ELEVATION, WHICHEVER IS LOWER.
3. PIPE CAN BE REDUCED TO 4" DIAMETER 10' BEYOND THE RIGHT OF WAY LINE.



City of
Bellevue

SEWER UTILITIES

TITLE

SIDE SEWER LATERAL