

**April 4, 2017**

**Neighborhood Traffic Mitigation Committee Meeting (#8)**

**5:30-7:00 pm, City Hall 1E-119**

**Staff Liaisons:**

- Marie Jensen, East Link Outreach, Transportation Dept.
- John Murphy, Neighborhood Traffic Safety Services, Transportation Dept.

**Neighborhood Traffic Mitigation Committee:**

<b>Beaux Arts Village</b>	<b>Bellecrest</b>	<b>Enatai</b>	<b>Surrey Downs</b>
Tom Stowe	Mike Koehn	Kevin Paulich	Kerri Patterson
Eugenia Yen	Tricia Thomason	Rebecca Sears	Ed Nugent
Cynthia Hudson	Liz Hale	Katherine Christopherson	

**Agenda:**

- 1) Discussion:
  - a) Finalize Plan elements
  - b) Timing of implementation
- 2) Draft Communication Plan

# Communications Plan for East Link Construction Neighborhood Traffic Mitigation Plan

## KEY MESSAGES

### *About the East Link Construction Neighborhood Traffic Mitigation Committee*

- The overall goal of the East Link Construction Neighborhood Traffic Mitigation Plan is to lessen the potential for increased traffic on neighborhood streets as a result of heavy construction on Bellevue Way and 112<sup>th</sup> Ave SE for the East Link light rail project.
  - The Plan will be temporarily implemented during construction of the light rail on these two roadways
- The Neighborhood Traffic Mitigation (NTM) Committee was formed as a balanced representation of residents from the Surrey Downs, Enatai, and Bellecrest neighborhoods and Beaux Arts Village to recommend tools to achieve the above goal.
  - Representation included members designated by the representative neighborhoods and complemented by “at large” members.
  - Members worked collaboratively to collectively understand potential traffic impacts due to East Link construction within the neighborhoods they represent.
- The NTM work is based on established practices used by the Neighborhood Traffic Safety Services (NTSS) program
  - The NTSS program works with residents to address concerns related to speeding traffic, commuter traffic, and pedestrian safety issues
  - Staff work collaboratively with residents to find tools that are favored by the community
- The NTM Committee supports a program that emphasizes access to neighborhoods and discourages commuter traffic and speeding through neighborhoods during East Link construction. The Committee recognizes that for its recommended plan to meet these goals, the plan carries some tradeoffs, including:
  - The NTM Committee recognizes that mitigation implemented as part of its final recommended plan applies to all drivers.
  - The Committee further recognizes that there is no single solution that would meet all of the needs of the neighborhoods it represents.
  - The Committee also recognizes that traffic mitigation it recommends will most likely involve additional travel times, re-routes, and inconvenience to all drivers.
- The NTM Committee received an extensive education in known traffic conditions, traffic movements and volumes, and mitigation tools used by the City’s Neighborhood Traffic Safety Services program.
  - City police and fire personnel discussed with the Committee the potential impacts (e.g. response times, enforcement) of mitigation tools such as speed humps, signage, and access restrictions.
- The NTM Committee considered tools that are intended to mitigate traffic impacts at key locations once East Link construction is underway and is interested in applying tools based upon key

construction activities and in evaluating traffic data throughout the duration of construction.

### ***About the initial draft East Link Construction Neighborhood Traffic Mitigation Plan***

- In September 2016, the Committee released its initial draft mitigation for feedback from residents within the impacted neighborhoods which proposed evening (4-7 p.m.) turn restrictions in the Bellecrest and Enatai neighborhoods, and evening turn restrictions into Bellecrest from the south and signage to encourage safe driving.
  - The initial draft plan effectively discouraged traffic movements from the north (e.g. downtown Bellevue) to Bellevue Way and ultimately the freeway from using neighborhood streets to avoid potential congestion on Bellevue Way and 112<sup>th</sup> Ave SE and
- Feedback from neighbors on the initial plan validated concern about increased traffic in neighborhoods due to East Link construction as well as indicated that neighborhood access is of critical importance.
- Based upon community feedback on the initial plan, the Committee revised its goals for the mitigation plan to be less restrictive while still discouraging commuter traffic related to East Link construction and speeding and to consider potential mitigation tools once construction activities are better known.

### ***About the revised draft East Link Construction Neighborhood Traffic Mitigation Plan***

- The revised draft plan includes turn restriction, local access only signs, and stationary radar signs with data monitoring.
- Through its discussions of refining the plan to meet the revised goals, the NTM Committee identified the intersection of 108<sup>th</sup> Ave SE and Bellevue Way as a central point between north communities (Bellecrest and Surrey Downs) and south communities (Enatai and Beaux Arts Village) that needs careful consideration.
  - Traffic volumes are documented to be highest in the evening hours in the southbound directions. For example, between 4-7 pm, southbound 108<sup>th</sup> Ave SE traffic through Bellecrest carries more than 20% of all traffic for the day for both directions
- The Committee has considered, as a pilot program, time limited (4 to 7 p.m.) turn restrictions at SE 16<sup>th</sup> Street at Bellevue Way and on SE 16<sup>th</sup> Street at 108<sup>th</sup> Avenue SE in the Bellecrest neighborhood for the purposes of discouraging the use of 108<sup>th</sup> Ave SE as an alternative route to access Bellevue Way/freeway. If a motorist's destination is not directly on 108<sup>th</sup> Ave SE (north of SE 16<sup>th</sup> St) or on SE 16<sup>th</sup> St, they would then be forced to travel north on Bellevue Way back toward downtown
  - These turn restrictions are the most restrictive of the tools being sought by the Committee.
  - As a pilot program, this would be an opportunity for the Committee and City's Transportation Department to evaluate its effectiveness in discouraging commuter traffic from using 108<sup>th</sup> Ave SE to access Bellevue Way.
    - Other tools such as stationary radar signs and local access only signs would be implemented when stated guidelines are met but would not be subject to a pilot implementation period given the minimal impact these tools have an access

- All motorists would be subject to these temporary restrictions and the Bellevue Police Department will have a presence during the initial implementation and help drivers to become aware of the new restrictions and a continued presence for enforcement purposes.
- The City will conduct outreach to residents and businesses directly impacted by the pilot program prior to its implementation.
- The City will create informational resources, including a webpage, to describe the pilot program in detail and answer frequently asked questions
- The City will provide an ongoing opportunity for residents to provide feedback during the pilot program
- Implementation of the pilot program and other recommended elements of the Mitigation Plan will be considered by Committee

***About the final recommended East Link Construction Neighborhood Traffic Mitigation Plan***

[To be completed upon the Committee's recommendations to the City]

***For more information about the East Link Construction Neighborhood Traffic Mitigation Committee***

- Go to [www.bellevuewa.gov](http://www.bellevuewa.gov) and search the name of the Committee.
- For more information about the pilot program, contact John Murphy, Neighborhood Traffic Safety Services, at 425-452-6967 or [jmurphy@bellevuewa.gov](mailto:jmurphy@bellevuewa.gov).

## COMMUNICATIONS

The following general communications strategies are intended to keep stakeholders informed during the Committee's refining of the Plan, its final recommendations including timing of implementation and updates following implementation.

### Stakeholders to keep informed

- Neighborhood Traffic Mitigation Committee
  - Meeting #8, 4/4
- Neighborhood Association Leadership from impacted neighborhoods
  - Briefing Bellecrest 3/29
- Community (impacted neighborhoods)
- Bellevue School District (Bellevue High School)
  - Briefing 3/31
- Businesses
- Sound Transit
  - Briefing 3/22
- King County Metro

### Potential Communications Strategies

- Project webpage (Transportation Department/East Link/Mitigation)
  - Frequently Asked Questions
- Direct mailer to impacted neighborhoods
- News Release (Media, Public, City web/homepage)
- Newsletters
  - *It's Your City* Citywide newsletter (Feb, June, Oct publications)
  - City's monthly Neighborhood Newsletter (electronic)
- Outreach
  - Contact directly impacted residents and businesses prior to implementation
  - Updates at Neighborhood Association Meetings (upon request)
  - Bellevue High School PTA meeting
  - "Pop Up" outreach at affected areas within the final Plan
- Updates through City's Social Media
  - East Link List and Transportation News servs
  - NextDoor
  - City Facebook (@BellevueWashington)
  - City Twitter (@BvueTrans; @bellevuewa)
- Public Safety Announcement (PSA) video (Bellevue TV)
- Neighborhood Association Communications
  - Publications, Websites, Email
  - Association meetings

**Jensen, Marie**

---

**From:** Murphy, John  
**Sent:** Friday, January 20, 2017 11:29 AM  
**To:** Liz Baxter  
**Cc:** Jensen, Marie  
**Subject:** RE: Enatai Traffic Mitigation Map (follow up)

Hi Liz,

Thank you for the follow-up.

Since Marie last communicated with you in November, the Neighborhood Traffic Mitigation Committee (Committee) has considered all the feedback received from the wider community to revise the draft plan. One of the key messages received from the community was that the proposed turn restrictions were far too restrictive and that there should be a greater emphasis on allowing for residential egress. As such, the revised draft plan reflects the community's desire for allowing egress during the afternoon peak by removing the proposed turn restrictions at 112<sup>th</sup> Ave SE/Bellevue Way and 113<sup>th</sup> Ave SE/Bellevue Way. Additionally, the plan calls for local access only signs, as you describe. The Committee is still revising the plan and there will be another opportunity to provide feedback before it is implemented.

The presentation from the most recent Committee meeting can be found on the South Bellevue Neighborhood Traffic Committee webpage. The webpage contains all the resources presented to the Committee during the past 9 months of meetings. Included in the presentation is a discussion about the use of placards (or stickers) that would, as you describe, allow officers to easily identify a resident's car by identifying a sticker of some sort. While this system seems straightforward, there are actually a number of complexities (lack of local or national precedence, difficult to administer, precedent setting, enforcement challenges, driver behavior issues, and jurisdictional challenges) associated with it. As such, there has been direction from the Transportation Director, with support from the Police Chief, that the challenges associated with such a program would not be prudent or tenable for the city to pursue.

Regarding the residential parking zone (RPZ), the City Council recently approved an area around the South Bellevue Park and Ride to allow for an RPZ to be implemented if it meets minimum stated guidelines and is supported by the community. Here is the City Council Agenda memo and map that sets the context for that parking zone. If you are concerned about existing spillover parking near your home, I will be happy to send you a Parking Request Review form to complete and mail back that initiates the review process.

Please let me know if you have any additional questions or if you would like to receive a Parking Request Review form.

Thanks,  
 John

**JOHN MURPHY** | Associate Planner

City of Bellevue | Transportation Department | Neighborhood Traffic Safety Services  
 450 110<sup>th</sup> Ave NE | Bellevue, WA 98009  
 O: 425-452-6967 | <http://www.bellevuewa.gov>

---

**From:** Liz Baxter [mailto:██████████@bellevuewa.gov]  
**Sent:** Wednesday, January 11, 2017 8:46 AM  
**To:** Jensen, Marie <MJensen@bellevuewa.gov>  
**Cc:** Murphy, John <JMurphy@bellevuewa.gov>  
**Subject:** Re: Enatai Traffic Mitigation Map (follow up)

Marie,

Thank you for your response. As I drive all over King county thru traffic and construction, I see signs everywhere I go both temporary and permanent that say things like "local access only", "residents only", etc.

To mitigate what our neighborhoods are about to go thru, it would be an easy solution, easy to manage and easy to implement to provided those of us impacted by this, a "local" or "resident" status.

If someone were to turn during restricted times, an officer managing that intersection could easily identify a local or resident car with a sticker of some sort. If the car does not have one, then the officer would likely pull them over. In that instance if the individual can prove they are a resident through an address on their drivers license or some other identification provided by the City then the officer would not have to issue a ticket. Quite simple.

In addition, we desperately need residential parking zones. In the last Bellevue Reporter article regarding the construction for the park and ride, it is frightening to think about the number of displaced cars that will be scattered throughout our neighborhood.

It is unacceptable the lack of and poor mitigation both the City and Sound Transit are offering. The poor planning is going to create quite a negative situation. You can do better.

Best,  
Liz Baxter

Sent from my iPhone

On Nov 1, 2016, at 6:32 AM, "MJensen@bellevuewa.gov" <MJensen@bellevuewa.gov> wrote:

Hi Liz,

I wanted to follow up with you and others who contacted the City about the draft Neighborhood Traffic Mitigation Plan.

The proposed tools in the draft plan (e.g. signs and turn restrictions) were intended to lessen the potential for more cut-through traffic once East Link light rail construction begins on Bellevue Way and 112<sup>th</sup> Avenue SE. Based upon recent neighborhood feedback - particularly the need to balance access for the neighborhood with mitigating for increased traffic - the Neighborhood Traffic Mitigation Committee members are considering all comments as they refine the plan. Following its Oct. 25 meeting, the Committee wants to place a greater emphasis on residential access and traffic data collection and monitoring. Further, members want to approach traffic mitigation tools incrementally that can better respond to actual conditions once East Link construction begins. Analysis of the feedback is posted online ([http://bellevuewa.gov/pdf/Transportation/NTMC\\_Oct\\_25\\_-\\_Plan\\_Feedback\\_Overview.pdf](http://bellevuewa.gov/pdf/Transportation/NTMC_Oct_25_-_Plan_Feedback_Overview.pdf)).

A considerable theme reflected in comments about the draft Plan was the concept of a placard system that would allow access to certain residents during the proposed afternoon turn restrictions onto Bellevue Way. Currently there is no local or national program that, under similar circumstances, allows for preferential access for certain residents on public streets. Research will continue on legal and equity issues for this concept.

8

Another theme from feedback was the need for a residential parking program. The City is currently setting the framework for implementing a residential parking zone (RPZ) in Enatai, the neighborhood adjacent to the South Bellevue Park and Ride. Upon closure of the South Bellevue Park and Ride (anticipated as early as January 2017), city staff will be evaluating specified neighborhood streets to determine if spillover parking is occurring and then seek community approval for actual implementation of parking restrictions

Updates to the Committee's progress have been and will continue to be posted online at [www.bellevuewa.gov](http://www.bellevuewa.gov) (Search: South Bellevue Neighborhood Traffic Mitigation Committee). To receive future updates on the Committee's work, you can subscribe to the City's East Link Alerts contained in my signature below. As construction of East Link may start as early as January 2017, you may also want to subscribe to receive alerts from Sound Transit. The link is also in my signature below.

You are encouraged to connect with your neighborhood association as another way to stay informed on traffic mitigation and construction related to East Link.

*Marie Jensen*

East Link Outreach and Community Relations Lead  
City of Bellevue Transportation Department  
425-452-2064

Learn more about the East Link Light Rail in Bellevue:  
[City of Bellevue webpage](#) | [Subscribe to City Updates](#)  
[Sound Transit webpage](#) | [Subscribe to East Link Construction Updates](#)

---

**From:** Liz Baxter [mailto:██████████@l.com]

**Sent:** Monday, September 26, 2016 11:33 AM

**To:** Murphy, John <JMurphy@bellevuewa.gov>; Jensen, Marie <MJensen@bellevuewa.gov>

**Subject:** RE: Enatai Traffic Mitigation Map

Thanks John for your reply,

I understand there are trade-offs and I know about the committee. I also know I can turn on to Bellevue Way from SE 16th Street. But often I am driving other children in our neighborhood with various sports and school carpools who live South of me. So for me to have to cut back North through my neighborhood just so I can turn to get out of my neighborhood is highly inefficient. That's 4 stop lights I have to sit through. I can take me nearly 20-30 minutes just to get on to Bellevue Way from SE 16th Street and up to the Chevron station during peak times without the construction.

You are effectively trapping in us in our neighborhood for the next several years with limited ingress and egress. We are not the cut through traffic. We are the ones who live here.

What I asked for below is still relevant and has not been addressed as a possible option. Which would be that the locals, people who live in the neighborhood, have the option to turn onto



Bellevue Way during restricted times from any street at any time and that we have residential parking zones with permits established throughout the neighborhood.

I know Mercer Island residents are granted the use of the carpool lanes to get on and off the island and have other rights if they work on the island. I know other areas have RPZ. Why can we have special rights during this period of time?

Attempting to reduce the cut through traffic of people who don't live in the neighborhood is one thing, but to restrict those of us who legitimately live here and pay taxes here is ridiculous. We should be given a sticker or some type of identifier that allows us unrestricted ingress and egress to our homes, our neighborhood!

That would not be a burden on the system. Anyone living South of Main Street, West of 112th and North of I-90 should have special rights during this construction time. Or even make the band smaller and just allow those South of SE 8th, West of Bellevue Way and North of I-90...

If you are not the person, I can get any traction on this idea with, then can you please direct me to someone who can? I really appreciate your response and I know this will be a difficult time for everyone, but I'd really like my ideas to be put in front of someone who can actually implement them. It would be a simple thing to do this and ease the pressure on those of us that live here.

Again, I appreciate your help on this and any other suggestions you might have, along with additional contacts I could speak to.

Best,  
Liz

---

From: [JMurphy@bellevuewa.gov](mailto:JMurphy@bellevuewa.gov)  
 To: [REDACTED]; [MJensen@bellevuewa.gov](mailto:MJensen@bellevuewa.gov)  
 Subject: RE: Enatai Traffic Mitigation Map  
 Date: Fri, 23 Sep 2016 20:06:25 +0000

Hi Liz,

Thank you for your email. Based on the description of where you live, I assume you live west of Bellevue Way on SE 16<sup>th</sup> St. If you are using Bellevue Way to get to I-90 from SE 16<sup>th</sup> St, your ability to do so from west of Bellevue Way will not be restricted based on the Traffic Committee's plan. The only restrictions at SE 16<sup>th</sup> St are in/out of the Bellecrest neighborhood; in the morning, northbound Bellevue Way to eastbound SE 16<sup>th</sup> St is restricted and in the evening, westbound SE 16<sup>th</sup> St to southbound Bellevue Way is restricted.

<image001.jpg>

You should be receiving a newsletter in the mail—likely today or tomorrow—explaining this Committee's plan. Included is a link to an online survey to provide feedback. If you still have concerns, I encourage you to submit those concerns on the survey. We will be routing all comments to the Traffic Committee in October so they can consider the feedback and

revise the plan. The plan is the Committee's plan and the Committee is comprised of your neighbors. They live in your neighborhood and are well aware of the tradeoffs associated with what is being proposed. I encourage you to reach out to them as they have talked a lot about these tradeoffs during the meetings used to formulate the plan.

Thanks again for your email. Have a great weekend.

John

**JOHN MURPHY** | Associate Planner

City of Bellevue | Transportation Department | Neighborhood Traffic Safety Services  
450 110<sup>th</sup> Ave NE | Bellevue, WA 98009  
O: 425-452-6967 | <http://www.bellevuewa.gov> | <http://bellevuentss.wordpress.com>

**From:** Liz Baxter [mailto:████████████████████]  
**Sent:** Friday, September 23, 2016 9:37 AM  
**To:** Murphy, John <JMurphy@bellevuewa.gov>; Jensen, Marie <MJensen@bellevuewa.gov>  
**Subject:** Enatai Traffic Mitigation Map

Hello,

My name is Liz Baxter and I live on SE 16th Street in the Enatai neighborhood.

I recently saw a map indicating restricted turns on to Bellevue Way during peak hours during construction and perhaps for the next 7 years, possibly starting in January 2017. I have a huge issue with this as these are some of my most needed entrance and exit points in and out of my neighborhood, MY HOME!

My 2 children attend schools that I can only get to by travelling Bellevue Way to I-90 and they will be in these schools for the next 7 years! One of the school's does not offer bus service, so I have to drive both of my children to and from school everyday.

With the new school hours I have to leave around 3pm to retrieve them on time. If they stay for any after school activities or sports I will have to leave after 3pm which falls into the restricted times between the hours of 3-7pm. This is clearly going to present a major hardship to me and others in the neighborhood.

I would like to propose to you and any others you suggest I reach out to, 2 things:

1. Anyone and everyone who can prove they live in the neighborhoods impacted by this construction such as and not limited to: Enatai, Beaux Arts, Surrey Downs, Bellecrest, Killarney, etc. get a special dispensation, pass, placard, etc. something that designates them as a "local" and allows them to turn on to Bellevue Way during peak hours from any street in their neighborhood.
2. We create "Parking Zones" for our neighborhoods, issue "Residential Parking Zone Permits" for the locals. Other neighborhoods surrounding us have RPZ and it would come at a critical time that we, too, have these rights.

Please feel free to contact me at anytime [REDACTED]

//

Sincerely,  
Liz Baxter  
Enatai Resident and tax payer

**Jensen, Marie**

---

**From:** Murphy, John  
**Sent:** Friday, February 03, 2017 9:43 AM  
**To:** rleider@beauxarts-wa.gov  
**Cc:** Berg, David; Stevens, Paula; Nichols, Joyce; March, Kate; Jensen, Marie  
**Subject:** RE: Response to 1/6/17 Letter to Dave Berg RE: Traffic Monitoring

Dear Mayor Leider,

Thank you for your response. We will be sure to keep you in the loop as Tom, Eugenia, and Cynthia and the rest of the Neighborhood Traffic Mitigation Committee continue their work. Please don't hesitate to contact me should any other questions arise.

Thanks,  
 John

**JOHN MURPHY** | Associate Planner

City of Bellevue | Transportation Department | Neighborhood Traffic Safety Services  
 450 110<sup>th</sup> Ave NE | Bellevue, WA 98009  
 O: 425-452-6967 | <http://www.bellevuewa.gov>

**From:** rleider@beauxarts-wa.gov [mailto:rleider@beauxarts-wa.gov]  
**Sent:** Thursday, January 26, 2017 3:39 PM  
**To:** Murphy, John <JMurphy@bellevuewa.gov>  
**Cc:** Berg, David <DBerg@bellevuewa.gov>; Stevens, Paula <PStevens@bellevuewa.gov>; Nichols, Joyce <JNichols@bellevuewa.gov>; March, Kate <KMarch@bellevuewa.gov>; Jensen, Marie <MJensen@bellevuewa.gov>  
**Subject:** RE: Response to 1/6/17 Letter to Dave Berg RE: Traffic Monitoring

John:

~~Thank you for the prompt response, and additional information regarding the planned traffic monitoring. As I indicated, we would prefer continuous monitoring in order to better assess impacts (or perhaps the lack thereof) of the upcoming construction work--but understand your area-wide plan and it's rationale. We very much appreciate your efforts and sensitivity to the impact in the local neighborhoods.~~

Regards,

Richard Leider  
 Mayor  
 Beaux Arts Village  
 10550 SE 27th Street  
 Beaux Arts, WA 98004  
 206-972-8888 m  
 206-957-9600 x223 ofc

-----Original Message-----

**From:** JMurphy@bellevuewa.gov  
**Sent:** Thursday, January 26, 2017 1:41pm  
**To:** rleider@beauxarts-wa.gov  
**Cc:** DBerg@bellevuewa.gov, PStevens@bellevuewa.gov, JNichols@bellevuewa.gov, KMarch@bellevuewa.gov,

[MJensen@bellevuewa.gov](mailto:MJensen@bellevuewa.gov)

Subject: Response to 1/6/17 Letter to Dave Berg RE: Traffic Monitoring

January 26, 2017

Honorable Richard Leider  
Town of Beaux Arts Village  
10550 SE 27<sup>th</sup> St  
Beaux Arts Village, WA 98004

Dear Mayor Leider,

This email is in response to your January 6, 2017 letter sent to Transportation Director Dave Berg regarding a desire to have ongoing traffic monitoring on 104<sup>th</sup> and 108<sup>th</sup> Avenues SE. Thank you for your note and your questions.

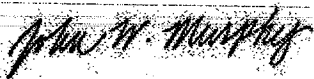
As part of East Link traffic mitigation work, the City plans to conduct strategic, routine neighborhood traffic data collection before and during major civil construction activities that occur on Bellevue Way and 112<sup>th</sup> Ave SE. While the data collection will not be continuous or permanent, we plan to be prudent with the deployment of data collection so we can actively understand changing neighborhood traffic conditions as the construction schedule ebbs and flows. The data will likely match the locations of previous data collection efforts including, but not limited to, locations on 104<sup>th</sup> Ave SE and 108<sup>th</sup> Ave SE.

The results of the data collection will then be communicated to the Neighborhood Traffic Mitigation Committee, to the public, and would ultimately help to inform Committee discussions on mitigation tools. This approach is outlined in the presentation from the recent January 10 Committee meeting.

The Committee continues its discussions on a draft mitigation plan and I'm pleased to hear that Tom, Cynthia, and Eugenia are keeping the Town Council apprised.

Thank you again for reaching out. If you have any other questions, comments, or would like staff to attend a Town Council meeting to provide an update, please let either myself or Marie Jensen know.

Sincerely,



John W. Murphy  
Associate Planner

City of Bellevue | Transportation Department | Neighborhood Traffic Safety Services  
450 110<sup>th</sup> Ave NE | Bellevue, WA 98009  
O: 425-452-6967 | <http://www.bellevuewa.gov>



Town of

# BEAUX ARTS VILLAGE

INCORPORATED AS A TOWN 1954

10550 S.E. 27th St. • Beaux Arts, WA 98004 • [townhall@beauxarts-wa.gov](mailto:townhall@beauxarts-wa.gov)  
(425) 454-8580 • Fax (425) 688-1786

January 6, 2017

Mr. Dave Berg  
Transportation Director  
City of Bellevue  
450 110th Avenue NE  
P.O. Box 90012  
Bellevue, WA 98009

Dear Mr. Berg:

I wanted to personally thank you for the Bellevue's active outreach and ongoing communications with Beaux Arts in anticipation of the upcoming construction of the Sound Transit East Link segment. The Town, as well as our Bellevue neighbors, may see a significant impact in traffic volumes as a result of this upcoming work--particularly along Bellevue Way. In that regard, we appreciate the opportunity to participate in the South Bellevue Neighborhood Traffic Mitigation Committee.

At the November meeting of that Committee, city staff shared existing traffic data and reviewed options for traffic monitoring. I understand there was also discussion regarding current (or recent) installation of traffic counters in several key areas. Our representatives to the Committee, together with our Council, believe it would be very helpful to have current, active data, prior to and during East Link and related construction work. This will help identify the extent of any traffic-related impacts to the work, as well as guide the location and extent of potential mitigation measures.

Which leads to this request. Would the City of Bellevue be amenable to installing (and keeping in place for ongoing monitoring) traffic counters along 104th and 108th? Placement and positioning would need to be such that the data would be identifiable in relation to our community--but also to the other Enatai areas. I would be happy to discuss this request in more detail, and/or meet with appropriate staff. Please feel free to call me at 206-972-8888, or you can also reach me at [rleider@beauxarts.wa.gov](mailto:rleider@beauxarts.wa.gov).

Best Regards,

Richard Leider  
Mayor

**Jensen, Marie**

---

**From:** Murphy, John  
**Sent:** Wednesday, February 15, 2017 1:54 PM  
**To:** Cynthia Hudson; Ed Nuget; Eugenia Lin Yen; Katherine Christopherson; Kerri Petterson; Kevin Paulich; Liz Hale; Mike Koehn; Rebecca Sears; Tom Stowe; Tricia Thomason  
**Cc:** Gonzalez, Karen; Jensen, Marie; LaCombe, Nancy  
**Subject:** Reply Requested: Pilot Program-Restriction on SE 16th St and 108th Ave SE  
**Attachments:** SE 16th and 108th Restriction Pilot Concept\_lowres.pdf

NTMC Members,

We wanted to provide you with an update regarding discussion had at the 1/10 meeting about the proposed turn restrictions at 108<sup>th</sup> Ave SE/Bellevue Way. Originally, the proposed turn restriction was to restrict movement from southbound 108<sup>th</sup> Ave SE to southbound Bellevue Way from 4-7 PM. At the 1/10 meeting, the suggestion to restrict southbound 108<sup>th</sup> Ave SE traffic across Bellevue Way to the other side of 108<sup>th</sup> Ave SE was also discussed. This additional restriction would decrease the possibility of southbound commuter traffic continuing through the Enatai neighborhood.

The purpose of this email is to share a pilot program for your consideration.

Sergeant Sanabria has been very open with you about the difficulty with enforcing turn restrictions at the 108<sup>th</sup>/Bellevue Way intersection (e.g. no place for officers to sit, no space to pull over violators). With this feedback from the Police Department, staff have brainstormed a pilot concept that meets similar goals of the 108<sup>th</sup>/Bellevue Way restrictions (discouraging traffic in both Bellecrest and Enatai) while making it easier for Police to enforce.

The idea is to shift the restrictions farther north to SE 16<sup>th</sup> St/108<sup>th</sup> Ave SE. The elements of this pilot include (see attached map):

- A no-through movement would be implemented on southbound 108<sup>th</sup> Ave SE, effectively forcing southbound motorists to make a right (west) on SE 16<sup>th</sup> St toward Bellevue Way.
- At SE 16<sup>th</sup> St and Bellevue Way, motorists would again be restricted in making a left (south) on Bellevue Way or straight (west) on SE 16<sup>th</sup> St, effectively forcing motorists to travel back north on Bellevue Way.
- Ultimately, this restriction would provide the Police Department more space to enforce the restriction while simultaneously communicating to commuter traffic that 108<sup>th</sup> Ave SE between Main St and Bellevue Way is not an appropriate road to use to access Bellevue Way or the Enatai neighborhood or Beaux Arts Village.

Traffic Engineering staff are currently reviewing options for the best way to sign and implement this proposed pilot restriction, but we need to hear from you first. What do you think of this idea? **We are requesting that you reply all with your feedback by Wednesday, February 22.**

Traffic Engineering staff and Police are reviewing exactly what the signage would look like to ensure visibility, where it would be positioned, where advanced signage would be located, and other options. Given that there are unknowns about how well this could function, we are proposing implementing this on a pilot basis for three months. This would provide an opportunity you and staff to study changes in traffic volume, communicate with routing firms (e.g. WAZE, Google Maps, etc.) that the restrictions are in place, allow for community feedback, and make refinements. Upon conclusion of the pilot and based on the aforementioned items that would be studied, the Committee and staff can make a determination on whether the pilot should continue throughout the construction period. Please note that the wider community will be very interested in this pilot approach, regardless of whether it lasts only during the pilot period or longer. If the pilot moves forward, the community will be notified of the pilot project and will likely be provided an opportunity to give feedback.

Please reply all by Wednesday, February 22 with your feedback. If discussion is such that a meeting is warranted, we will schedule one but we are hoping to have this conversation via email.

*Marie Jensen*

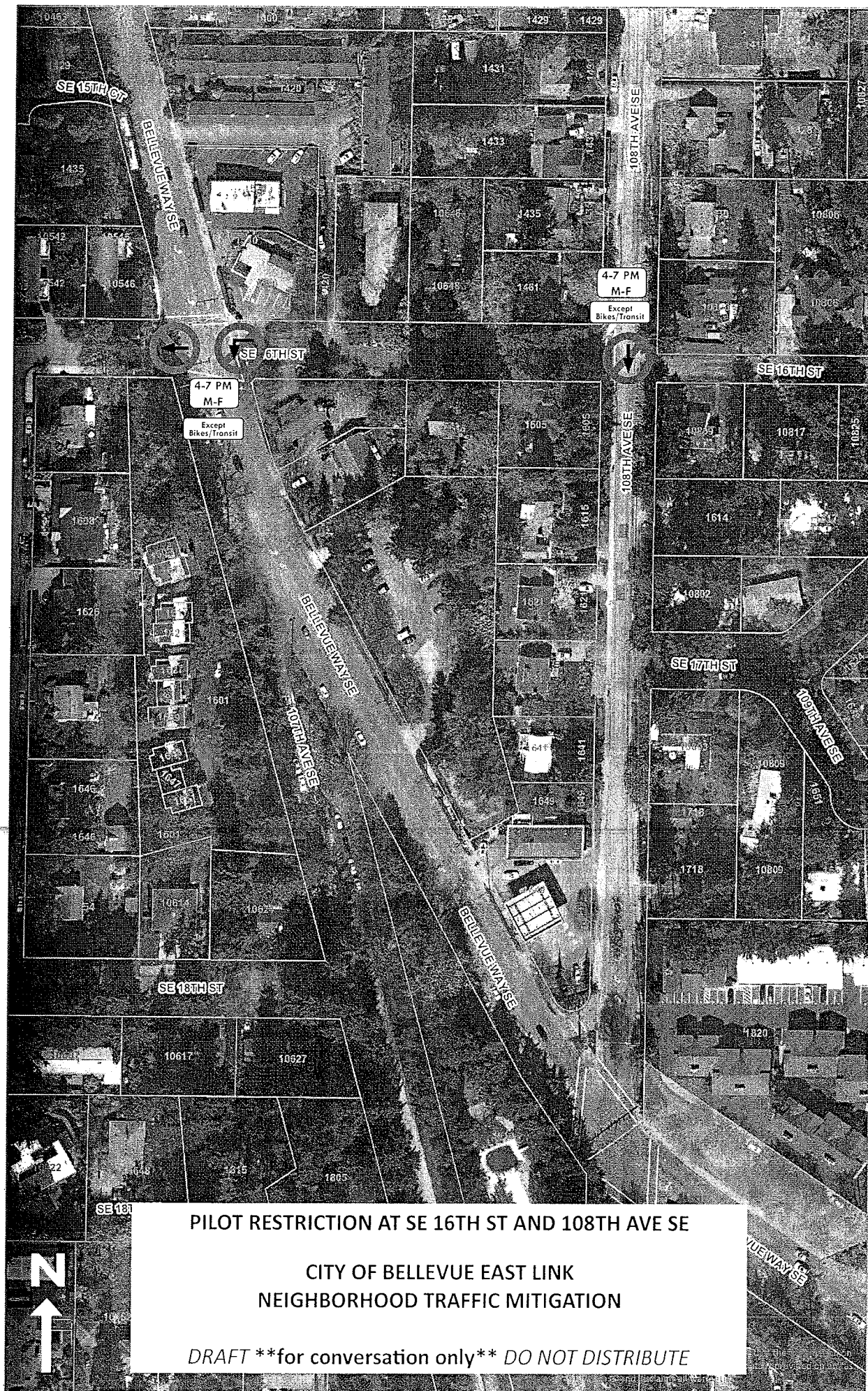
East Link Outreach and Community Relations Lead

*John Murphy*

Neighborhood Traffic Safety Service

City of Bellevue Transportation Department







**Jensen, Marie**

---

**From:** Tom Stowe <tstowe@beauxarts-wa.gov>  
**Sent:** Wednesday, February 15, 2017 7:04 PM  
**To:** Murphy, John; chudson@beauxarts-wa.gov; [REDACTED]  
 [REDACTED]  
 [REDACTED]  
**Cc:** Gonzalez, Karen; Jensen, Marie; LaCombe, Nancy  
**Subject:** RE: Reply Requested: Pilot Program-Restriction on SE 16th St and 108th Ave SE

Dear NTMC,

I do not support this option, because it appears to create a larger problem then it solves. We need less congestion not more.

Is there still discussion of removing the median with the trees and adding a dedicated left turn lane with a left turn signal at south bound 108th & Bellevue Way? Then matching that left turn signal for north bound 108th traffic? Would that relieve any congestion?

We would still like to get full time active traffic counts set up throughout the affected neighborhoods. They are available as part of electronic speed signs, and being used by surrounding communities.

Thank you all for your hard work and dedication.

Tom Stowe  
 Councilmember  
 Town of Beaux Arts Village

---

**From:** JMurphy@bellevuewa.gov  
**Sent:** 2/15/2017 1:53 PM  
**To:** chudson@beauxarts-wa.gov; [REDACTED]  
 [REDACTED]  
 [REDACTED]  
**Cc:** KGonzalez@bellevuewa.gov; MJensen@bellevuewa.gov; NLacombe@bellevuewa.gov  
**Subject:** Reply Requested: Pilot Program-Restriction on SE 16th St and 108th Ave SE

NTMC Members,

We wanted to provide you with an update regarding discussion had at the 1/10 meeting about the proposed turn restrictions at 108<sup>th</sup> Ave SE/Bellevue Way. Originally, the proposed turn restriction was to restrict movement from southbound 108<sup>th</sup> Ave SE to southbound Bellevue Way from 4-7 PM. At the 1/10 meeting, the suggestion to restrict southbound 108<sup>th</sup> Ave SE traffic across Bellevue Way to the other side of 108<sup>th</sup> Ave SE was also discussed. This additional restriction would decrease the possibility of southbound commuter traffic continuing through the Enatai neighborhood.

The purpose of this email is to share a pilot program for your consideration.

Sergeant Sanabria has been very open with you about the difficulty with enforcing turn restrictions at the 108<sup>th</sup>/Bellevue Way intersection (e.g. no place for officers to sit, no space to pull over violators). With this feedback from the Police Department, staff have brainstormed a pilot concept that meets similar goals of the 108<sup>th</sup>/Bellevue Way restrictions (discouraging traffic in both Bellecrest and Enatai) while making it easier for Police to enforce.

**Jensen, Marie**

---

**From:** Tricia Thomason [REDACTED]  
**Sent:** Wednesday, February 15, 2017 9:33 PM  
**To:** Tom Stowe  
**Cc:** Murphy, John; chudson@beauxarts-wa.gov; Edward Nugent; [REDACTED]; [REDACTED]; Liz Hale and Umesh Madan; Mike Koehn; [REDACTED]; Gonzalez, Karen; Jensen, Marie; LaCombe, Nancy  
**Subject:** Re: Reply Requested: Pilot Program-Restriction on SE 16th St and 108th Ave SE

Tom--I think you missed many of the meetings in which we discussed the goals of the committee and where the traffic data was presented (we had detailed traffic data at the last several meetings--and City of Bellevue agreed to install those active traffic counts with electronic speed signs at several locations). The members agreed that we were trying to reduce cut through traffic and congestion on neighborhood streets while also maintaining ease of access for all residents. We have never discussed adding a dedicated turn lane to the neighborhood street of 108th because that would encourage all of downtown Bellevue to cut through Bellecrest and Surrey Downs to access the freeway.

John-- I think the attached solution would be amenable to Bellecrest residents as it will accomplish the goals important to the neighborhood (safety).

However, why does BPD believe they can enforce a no left/straight at SE 16th/Bellevue Way and not also at 108th/Bellevue Way? At the end of the last meeting we discussed adding the no straight onto the SE 16th/108th restrictions and it appeared to get support.

A bit more perspective if you are more of a visual person: with a no straight and a no left turn on both 108th and SE 16th, if Enatai and Beaux Arts residents still wanted to access those neighborhoods via 108th, they could easily go down 108th, take a right onto Bellevue Way, and then an immediate left onto SE 16th (from Bellevue Way). You could get back on track with a minimal detour.

On Wed, Feb 15, 2017 at 7:03 PM, Tom Stowe <[tstowe@beauxarts-wa.gov](mailto:tstowe@beauxarts-wa.gov)> wrote:

Dear NTMC,

I do not support this option, because it appears to create a larger problem than it solves. We need less congestion not more.

Is there still discussion of removing the median with the trees and adding a dedicated left turn lane with a left turn signal at south bound 108th & Bellevue Way? Then matching that left turn signal for north bound 108th traffic? Would that relieve any congestion?

We would still like to get full time active traffic counts set up throughout the affected neighborhoods. They are available as part of electronic speed signs, and being used by surrounding communities.

Thank you all for your hard work and dedication.

Tom Stowe  
 Councilmember  
 Town of Beaux Arts Village

**Jensen, Marie**

---

**From:** kevin paulich <[REDACTED]>  
**Sent:** Thursday, February 16, 2017 8:56 AM  
**To:** Murphy, John; chudson@beauxarts-wa.gov; [REDACTED];  
 [REDACTED];  
 [REDACTED];  
 [REDACTED];  
 [REDACTED];  
**Cc:** tstowe@beauxarts-wa.gov; [REDACTED];  
 Gonzalez, Karen; Jensen, Marie; LaCombe, Nancy  
**Subject:** RE: Reply Requested: Pilot Program-Restriction on SE 16th St and 108th Ave SE

If there is going to be no left turn allowed onto Bellevue Way from southbound 108<sup>th</sup>, and there are not going to be right turn restrictions at 112<sup>th</sup> and 113<sup>th</sup> onto Bellevue Way, then your proposal is necessary in order to avoid Enatai being swamped with traffic.

*Thanks!*

*Kevin*

---

**From:** JMurphy@bellevuewa.gov [mailto:JMurphy@bellevuewa.gov]  
**Sent:** Wednesday, February 15, 2017 13:54  
**To:** chudson@beauxarts-wa.gov; [REDACTED];  
 [REDACTED];  
 [REDACTED];  
**Cc:** KGonzalez@bellevuewa.gov; MJensen@bellevuewa.gov; NLacombe@bellevuewa.gov  
**Subject:** Reply Requested: Pilot Program-Restriction on SE 16th St and 108th Ave SE

NTMC Members,

We wanted to provide you with an update regarding discussion had at the 1/10 meeting about the proposed turn restrictions at 108<sup>th</sup> Ave SE/Bellevue Way. Originally, the proposed turn restriction was to restrict movement from southbound 108<sup>th</sup> Ave SE to southbound Bellevue Way from 4-7 PM. At the 1/10 meeting, the suggestion to restrict southbound 108<sup>th</sup> Ave SE traffic across Bellevue Way to the other side of 108<sup>th</sup> Ave SE was also discussed. This additional restriction would decrease the possibility of southbound commuter traffic continuing through the Enatai neighborhood.

The purpose of this email is to share a pilot program for your consideration.

Sergeant Sanabria has been very open with you about the difficulty with enforcing turn restrictions at the 108<sup>th</sup>/Bellevue Way intersection (e.g. no place for officers to sit, no space to pull over violators). With this feedback from the Police Department, staff have brainstormed a pilot concept that meets similar goals of the 108<sup>th</sup>/Bellevue Way restrictions (discouraging traffic in both Bellecrest and Enatai) while making it easier for Police to enforce.

The idea is to shift the restrictions farther north to SE 16<sup>th</sup> St/108<sup>th</sup> Ave SE. The elements of this pilot include (see attached map):

- A no-through movement would be implemented on southbound 108<sup>th</sup> Ave SE, effectively forcing southbound motorists to make a right (west) on SE 16<sup>th</sup> St toward Bellevue Way.



John,  
Please describe in more detail the signage for the "no-through movement" on southbound 108<sup>th</sup> Ave SE. What would the sign say in order to effectively force southbound motorists to make a right (west) on SE 16<sup>th</sup> St toward Bellevue Way? Is Tricia correct when she says "if Enatai and Beaux Arts residents still wanted to access those neighborhoods via 108th, they could easily go down 108th, take a right onto Bellevue Way, and then an immediate left onto SE 16th (from Bellevue Way)"?

Thanks!

Kevin





- (Tricia) However, why does BPD believe they can enforce a no left/straight at SE 16th/Bellevue Way and not also at 108th/Bellevue Way? At the end of the last meeting we discussed adding the no straight onto the SE 16th/108th restrictions and it appeared to get support.
  - *The Police Department is concerned about the lack of space to safely pull over motorists on Bellevue Way if a restriction at 108th Ave SE/Bellevue Way was in place. There would be little place for officers to sit near the intersection and then little place for officers to actually pull over violators. There is not sufficient shoulder space on Bellevue Way to safely pull people over. Given the lack of space, this could exacerbate the potential for congestion. Sergeant Sanabria thinks there is sufficient space at the SE 16th/108th intersection for officers to sit. Additionally, if violators are caught at SE 16th/Bellevue Way, they can be pulled over on 107th Ave SE or on 108th Ave SE (south of Bellevue Way).*
- (Tricia) A bit more perspective if you are more of a visual person: with a no straight and a no left turn on both 108th and SE 16th, if Enatai and Beaux Arts residents still wanted to access those neighborhoods via 108th, they could easily go down 108th, take a right onto Bellevue Way, and then an immediate left onto SE 16th (from Bellevue Way). You could get back on track with a minimal detour.
  - *I'm not sure if I am understanding your routing suggestion, Tricia. Motorists could not make a right onto Bellevue Way at 108th/Bellevue Way because of the restriction at SE 16th/108th Ave SE. Alternatively, motorists can travel south on Bellevue Way, left on SE 16th, and right onto 108th Ave SE (and across Bellevue Way). See attached graphic.*
- (Ed) How will enforcement affect residents on 108th between SE 16th street and Bellevue Way and vehicles traveling only as far as the Chevron service station.
  - *All motorists would be subject to the restriction at SE 16th St/108th. To access these properties, motorists could access off of Bellevue Way or as described above in response to Tricia's question (i.e. southbound Bellevue Way > eastbound SE 16th St > southbound 108th Ave SE). If these residents that live south of SE 16th St and are leaving their homes, they will not be restricted (as Liz indicates).*
- (Liz) John and Marie, please correct me if I'm wrong. Also, I'm assuming it will be OK for those living along 16th to make a southbound turn onto 108th during the 4 to 7 window as they will be turning as opposed to going through the intersection. John and Marie, is this correct?
  - *That is correct, Liz.*
- (Kevin) Please describe in more detail the signage for the "no-through movement" on southbound 108th Ave SE. What would the sign say in order to effectively force southbound motorists to make a right (west) on SE 16th St toward Bellevue Way? Is Tricia correct when she says "if Enatai and Beaux Arts residents still wanted to access those neighborhoods via 108th, they could easily go down 108th, take a right onto Bellevue Way, and then an immediate left onto SE 16th (from Bellevue Way)"?
  - *What the sign would say to effectively force southbound motorists to make a right is currently being evaluated by Traffic Engineering staff. There are several approaches (e.g. all traffic must turn right, no through arrow, etc.) that they are reviewing. If I understand Tricia correctly, her suggested movement would not be legal or valid. See previous explanation and map.*

Thanks,  
John

**JOHN MURPHY** | Associate Planner

City of Bellevue | Transportation Department | Neighborhood Traffic Safety Services  
450 110th Ave NE | Bellevue, WA 98009  
O: 425-452-6967 | <http://www.bellevuewa.gov>

**4-7 PM**  
**M-F**  
**Except**  
**Bikes/Transit**

The City of Bellevue does not guarantee that the information on this map is accurate or complete. The data is provided on an "as is" basis and disclaims all warranties.

Jensen, Marie

**From:** Tricia Thomason [REDACTED]  
**Sent:** Friday, February 17, 2017 12:21 PM  
**To:** Murphy, John  
**Cc:** [REDACTED]; Liz Hale and Umesh Madan; Edward Nugent; chudson@beauxarts-wa.gov; [REDACTED]; [REDACTED]; Mike Koehn; [REDACTED]; Tom Stowe; Gonzalez, Karen; Jensen, Marie; LaCombe, Nancy  
**Subject:** Re: Reply Requested: Pilot Program-Restriction on SE 16th St and 108th Ave SE

Thanks John. My suggestion would only work if the no turn and no straight was implemented at 108th and Bellevue Way as well (the suggestion went along with the paragraph before it), but with the additional clarification of restriction enforcement ability, I see this is not an option.

On Fri, Feb 17, 2017 at 11:21 AM, <JMurphy@bellevuewa.gov> wrote:

Hi Everyone,

Thank you so much for the prompt discussion. I'm liking what I'm seeing. Below are answers to questions that have come up thus far.

- (Eugenia) Regarding the "no-through movement would be implemented on southbound 108<sup>th</sup> Ave SE"... Does this mean that any southbound traffic south of SE 16<sup>th</sup> and the Chevron station will be stopped, because at that intersection, left turns, right turns, and straight traffic will all be prohibited? The only ways into BAV/Enatai during those hours would be as a right or left turn from Bellevue Way directly onto 108<sup>th</sup>, or from southbound Bellevue Way onto SE 16<sup>th</sup> or SE 10<sup>th</sup> (by the nursery).
  - *With the SE 16<sup>th</sup> St/108<sup>th</sup> Ave SE restriction, there would not be any additional turn restrictions at 108<sup>th</sup> Ave SE/Bellevue Way (i.e. at the Chevron station). Southbound traffic on 108<sup>th</sup> Ave SE south of SE 16<sup>th</sup> St would be permitted to make a left, right, or straight at the 108<sup>th</sup> Ave SE/Bellevue Way intersection.*
- (Eugenia) BAV/Enatai residents need some relief, and I would only support this plan if there were measures put in place to help us get home more quickly. We would need a much longer right-turn-only lane from southbound 112<sup>th</sup> Ave SE onto Bellevue Way northbound, and then a protected left-turn from Bellevue Way northbound onto 108<sup>th</sup>.
  - *This hits on one of the inherent tradeoffs that we've been talking about for the past year: relief from commuter traffic usually cannot simultaneously occur alongside improved access with residents. Improvements such as longer turn pockets or improved signal timing, while may improve residential access, also allow commuter traffic to benefit from said improvements.*

**Jensen, Marie**

---

**From:** Murphy, John  
**Sent:** Friday, February 17, 2017 5:07 PM  
**To:** Jensen, Marie  
**Subject:** FW: Reply Requested: Pilot Program-Restriction on SE 16th St and 108th Ave SE

FYI

---

**From:** mike koehn [mailto:[REDACTED]]  
**Sent:** Friday, February 17, 2017 4:59 PM  
**To:** Murphy, John <JMurphy@bellevuewa.gov>  
**Cc:** 'Renay Bennett' <[REDACTED]>  
**Subject:** RE: Reply Requested: Pilot Program-Restriction on SE 16th St and 108th Ave SE

John, Marie,

We appreciate the new initiative. While nothing will make everyone happy this appears to be positive low impact action the city can take to tackle the congestion that is already afflicting our community. My regards to enforcement for developing the idea. The choke may have the effect of rerouting down town traffic out of the south corridor in favor of other exits like SE8th and SE4th to 405 reducing which would be a good thing for Enatai/Beaux Arts and Bellecrest neighborhoods. It is worth a try at least on a temporary basis as you suggest.

---

Jensen, Marie

---

**From:** chudson@beauxarts-wa.gov  
**Sent:** Wednesday, February 22, 2017 4:30 PM  
**To:** Murphy, John  
**Cc:** [REDACTED]  
[REDACTED]  
[REDACTED]@beauxarts-wa.gov;  
[REDACTED]; Gonzalez, Karen; Jensen, Marie; LaCombe, Nancy  
**Subject:** RE: Reply Requested: Pilot Program-Restriction on SE 16th St and 108th Ave SE

All:

I do not have any new comments on the plan:

1. I feel bad for the residents who live south of 16th off of 108th.
2. I am looking forward to the installation of long-term traffic counting data collection on 108th, 25th, and 104th.
3. I would like to see more all-way stops and lower speed limits and flashing speed signs.

Regards,  
Cynthia

**From:** [REDACTED]  
**Sent:** Thursday, February 23, 2017 6:22 AM  
**To:** chudson@beauxarts-wa.gov  
**Cc:** Murphy, John; [REDACTED]  
[REDACTED]; [REDACTED]; liz hale; [REDACTED]  
tstowe@beauxarts-wa.gov; tricia thomason; Gonzalez, Karen; Jensen, Marie; LaCombe, Nancy  
**Subject:** Re: Reply Requested: Pilot Program-Restriction on SE 16th St and 108th Ave SE

Hi All,

I'm in favor of taking a pilot approach. The restrictions proposed are preferable than the recent options of (a) no restrictions (i.e. no left restriction from 108th S onto Bellevue Way S, no straight restriction on traveling on 108th S straight through Bellevue Way into Enatai/BA, no right restriction from 112th onto BWS, and no right restriction from 113th onto BWS) and (b) only restricting the left turn from 108th S onto Bellevue Way S (i.e. no restriction on going straight on 108th S through Bellevue Way into Enatai/BA).

What is important to discuss is when the pilot would take place, in relation to the Sound Transit work. Two basic options I see are to wait (maybe 3 months) after the Sound Transit construction traffic impacts are in effect, OR to get the pilot underway either ASAP or around the time the construction impacts begin. Based on the experience with the survey, I would preference the first option. Otherwise, I think the pilot could be viewed as the cause of neighborhood traffic inconvenience (esp. for Enatai/BA residents). I'm open to other implementation considerations, but overall sensitive that there are many who haven't given much/any thought to the implications of the impending construction on their own commute and neighborhood livability, who aren't sold on the fact that there will be a problem, and that were concerned that major (and optional) decisions were being made without their influence/input.

Finally, I do want us to keep an eye on where traffic is being transferred to (the counts get at part of this). Even if the pilot achieves its aim of reducing commuter traffic pains, my sense is that there will necessarily be a transfer of neighborhood traffic in Enatai/BA, as our Enatai/BA neighbors work to manage the new traffic patterns/restrictions. No solution from me, just something I want us to track, and manage as necessary.

Best,  
Rebecca

**Jensen, Marie**

---

**From:** Kerri Patterson <[REDACTED]>  
**Sent:** Saturday, February 25, 2017 10:55 AM  
**To:** Jensen, Marie  
**Subject:** Re: Response to Pilot Program (Neighborhood Traffic Mitigation)

I am very sorry I didn't get back to you sooner. I like the idea of the pilot program. I do have a wondering. Will SE 4th be closed when the pilot program starts? Either way I can see people trying to cut through Surry downs to try and find some way to the freeway if we don't have good signage on 108th at se 2nd and se 11th and 110th and Main Street ( the remaining open entrances to Surry Downs)

Thanks for all your work. Kerri

Sent from my iPad

On Feb 22, 2017, at 10:27 AM, <[MJensen@bellevuewa.gov](mailto:MJensen@bellevuewa.gov)> <[MJensen@bellevuewa.gov](mailto:MJensen@bellevuewa.gov)> wrote:

Hi Kerri

Do you think you'll have time to read John's email he sent on 2/15 about the pilot program? We're hoping to hear from all NTMC members.

Thanks much  
-Marie

*Marie Jensen*  
East Link Outreach and Community Relations Lead  
City of Bellevue Transportation Department  
425-452-2064 desk | 425-559-3757 cell  
Schedule: M-F, 7:30am - 4:30pm

32

**Subject:** Re: Reply Requested: Pilot Program-Restriction on SE 16th St and 108th Ave SE

Sorry for the delay in my response--I just got back to the US.

(1) As I have stated before, any proposal that only has restrictions at one point will undermine the goal of more efficiently managing traffic/coping with congestion. This proposal undermines smooth traffic flow and creates congestion.

(3) Any residents living between 108th SE and Bellevue Way--How exactly are they supposed to access their homes in a reasonable fashion/transit time?

In SUM, this proposal (possibly) benefits a few, while negatively impacting many more. I "vote" NO.

-Katherine

THIS EMAIL AND ANY FILES TRANSMITTED WITH IT ARE CONFIDENTIAL AND INTENDED SOLELY FOR THE ABOVE NAMED INDIVIDUAL(S) OR ENTITY(S) TO WHOM THEY ARE ADDRESSED. IF YOU HAVE RECEIVED THIS EMAIL IN ERROR PLEASE NOTIFY [KHCHRIST@GMAIL.COM](mailto:KHCHRIST@GMAIL.COM) IMMEDIATELY AND DELETE THIS E-MAIL FROM YOUR SYSTEM. THIS MESSAGE CONTAINS CONFIDENTIAL INFORMATION AND IS INTENDED ONLY FOR THE INDIVIDUAL(S) NAMED. IF YOU ARE NOT THE NAMED ADDRESSEE AND INTENDED RECIPIENT, YOU ARE HEREBY NOTIFIED THAT YOU ARE STRICTLY PROHIBITED FROM DISSEMINATING, DISTRIBUTING, AND/OR COPYING THIS E-MAIL AND/OR ANY DOCUMENTS ATTACHED HERETO.

1



Jensen, Marie

---

**From:** Liz Hale <[REDACTED]>  
**Sent:** Monday, February 27, 2017 5:31 PM  
**To:** Katherine Christopherson; Murphy, John  
**Cc:** chudson@beauxarts-wa.gov; Edward Nugent; [REDACTED]; [REDACTED]; kevin paulich; mike koehn; [REDACTED]; tstowe@beauxarts-wa.gov; Tricia Thomason; Gonzalez, Karen; Jensen, Marie; LaCombe, Nancy  
**Subject:** Re: Reply Requested: Pilot Program-Restriction on SE 16th St and 108th Ave SE

Katherine,

A few thoughts in response to your points below:

- 1.) We're hoping that this pilot program will help mitigate the impact of traffic increases to our neighborhoods, which is the reason this traffic committee was created in the first place.
- 2.) This proposal will NOT direct traffic westward into Enatai via 16th. At SE 16th, cars must turn right, forcing traffic to travel back north on Bellevue Way.
- 3.) Residents who live between SE 16th and Bellevue Way will have to use 116th or Bellevue Way to get to their homes between 4 and 7 pm. I think it may be OK also for them to turn onto SE 16th from Bellevue Way and then take a right from 16th onto 108th AVE SE. This would also be another way to get to the Chevron during these hours. John, is this correct?

Although this obviously won't be as convenient as coming down 108th, now that we've dropped the idea of turn restrictions at 108th and Bellevue Way, these residents will at least be able to travel either direction on 108th when leaving their homes between 4 and 7. And if they're heading toward I-90, at least they'll be able to do that.

- 4.) As you can still get to the Chevron from Bellevue Way, I don't know that I agree that this meaningfully blocks access to the gas station.

Regards,  
Liz

---

**From:** Tricia Thomason <[REDACTED]>  
**Sent:** Monday, February 27, 2017 6:13 PM  
**To:** Liz Hale  
**Cc:** Katherine Christopherson; Murphy, John; chudson@beauxarts-wa.gov; Edward Nugent; [REDACTED]; kevin paulich; mike koehn; [REDACTED]; tstowe@beauxarts-wa.gov; Gonzalez, Karen; Jensen, Marie; LaCombe, Nancy  
**Subject:** Re: Reply Requested: Pilot Program-Restriction on SE 16th St and 108th Ave SE

One more point.

3.) Traffic currently (before construction) is backed up to at least SE 12th Street (my street) between 4-7pm nightly on 108th and sometimes all the way to Bellevue High School. Thus the folks that live south of SE 16th off 108th don't normally try to get to their houses down 108th during this time. It just took me 25 minutes to get from SE 12th to Bellevue Way (granted, today is the perfect storm of traffic, but it happens regularly). I've spoken with one resident (of the 18 houses) that lives in this affected area and they welcome the restrictions as presented.

On Mon, Feb 27, 2017 at 5:31 PM, Liz Hale <[REDACTED]> wrote:

Katherine,

A few thoughts in response to your points below:

- 1.) We're hoping that this pilot program will help mitigate the impact of traffic increases to our neighborhoods, which is the reason this traffic committee was created in the first place.
- 2.) This proposal will NOT direct traffic westward into Enatai via 16th. At SE 16th, cars must turn right, forcing traffic to travel back north on Bellevue Way.
- 3.) Residents who live between SE 16th and Bellevue Way will have to use 116th or Bellevue Way to get to their homes between 4 and 7 pm. I think it may be OK also for them to turn onto SE 16th from Bellevue Way and then take a right from 16th onto 108th AVE SE. This would also be another way to get to the Chevron during these hours. John, is this correct?

Although this obviously won't be as convenient as coming down 108th, now that we've dropped the idea of turn restrictions at 108th and Bellevue Way, these residents will at least be able to travel either direction on

Jensen, Marie

---

**From:** Katherine Christopherson [REDACTED]  
**Sent:** Monday, February 27, 2017 8:49 PM  
**To:** Liz Hale  
**Cc:** Murphy, John; chudson@beauxarts-wa.gov; Edward Nugent; [REDACTED]; kevin paulich; mike koehn; [REDACTED]; tstowe@beauxarts-wa.gov; Tricia Thomason; Gonzalez, Karen; Jensen, Marie; LaCombe, Nancy  
**Subject:** Re: Reply Requested: Pilot Program-Restriction on SE 16th St and 108th Ave SE

Liz,  
See my responses in blue type.

1.) We're hoping that this pilot program will help mitigate the impact of traffic increases to our neighborhoods, which is the reason this traffic committee was created in the first place.

The goal is to **mitigate**, not to **create** new problems, and secondly, the purpose of this committee is definitively **not** to act a vehicle for Bellecrest to get its pet traffic realignment wishes granted (albeit even on this temporary basis). Creating a single new choke point, absent any other complementary/congruent restrictions at other ingress/egress points in the entire affected area, does **nothing** to improve traffic flow. In all likelihood, this proposal is just going to make an already difficult situation worse.

2.) This proposal will NOT direct traffic westward into Enatai via 16th. At SE 16th, cars must turn right, forcing traffic to travel back north on Bellevue Way.

You are correct. People will not go straight into Enatai on 16th, rather they will go right for 1 or 2 blocks and then turn left to go through Enatai to 90 via 104th--ie, this plan is just shoving more cars into Enatai/Beaux Arts, and increasing the burden on residents there. Other creative drivers will just head south on 104th or Bellevue Way, turn left on 16th, and the turn right onto 108th--ie, there will still be a backup on 108th SE turning to Bellevue Way. This proposal actually solves nothing. **WAZE**, for example, will direct drivers to do exactly what I am describing.

3.) Residents who live between SE 16th and Bellevue Way will have to use 116th or Bellevue Way to get to their homes between 4 and 7 pm. I think it may be OK also for them to turn onto SE 16th from Bellevue Way and then take a right from 16th onto 108th AVE SE. This would also be another way to get to the Chevron during these hours. **John, is this correct?**

116th is on the East side of 405--perhaps you are referring to another street? -

Although this obviously won't be as convenient as coming down 108th, now that we've dropped the idea of turn restrictions at 108th and Bellevue Way, these residents will at least be able to travel either direction on 108th when leaving their homes between 4 and 7. And if they're heading toward I-90, at least they'll be able to do that.

4.) As you can still get to the Chevron from Bellevue Way, I don't know that I agree that this meaningfully blocks access to the gas station.

No one (living or driving from north of 16th) will be able to drive down 108th to access the gas station. Sure seems like a problem to me.

Also, **let's not forget** that any students/parents thereof, participating in athletics at Bellevue High, will be directly impacted by this proposal. Pretty sure there are significantly more Enatai/Beaux Arts students/parents involved in after schools athletics, than all of the members of the 18 "affected houses" that Tricia mentioned in her last email.

Best,

-Katherine

Regards,

Katherine H. Christopherson

[REDACTED]

THIS EMAIL AND ANY FILES TRANSMITTED WITH IT ARE CONFIDENTIAL AND INTENDED SOLELY FOR THE ABOVE NAMED INDIVIDUAL(S) OR ENTITY(S) TO WHOM THEY ARE ADDRESSED. IF YOU HAVE RECEIVED THIS EMAIL IN ERROR PLEASE NOTIFY [KHCHRIST@GMAIL.COM](mailto:KHCHRIST@GMAIL.COM) IMMEDIATELY AND DELETE THIS E-MAIL FROM YOUR SYSTEM. THIS MESSAGE CONTAINS CONFIDENTIAL INFORMATION AND IS INTENDED ONLY FOR THE INDIVIDUAL(S) NAMED. IF YOU ARE NOT THE NAMED ADDRESSEE AND INTENDED RECIPIENT, YOU ARE HEREBY NOTIFIED THAT YOU ARE STRICTLY PROHIBITED FROM DISSEMINATING, DISTRIBUTING, AND/OR COPYING THIS E-MAIL AND/OR ANY DOCUMENTS ATTACHED HERETO.

On Tue, Feb 28, 2017 at 2:31 AM, Liz Hale [REDACTED] wrote:

Katherine,

A few thoughts in response to your points below:

- 1.) We're hoping that this pilot program will help mitigate the impact of traffic increases to our neighborhoods, which is the reason this traffic committee was created in the first place.
- 2.) This proposal will NOT direct traffic westward into Enatai via 16th. At SE 16th, cars must turn right, forcing traffic to travel back north on Bellevue Way.
- 3.) Residents who live between SE 16th and Bellevue Way will have to use 116th or Bellevue Way to get to their homes between 4 and 7 pm. I think it may be OK also for them to turn onto SE 16th from Bellevue Way