

Welcome!

South Bellevue East Link Construction Neighborhood Traffic Mitigation Meeting

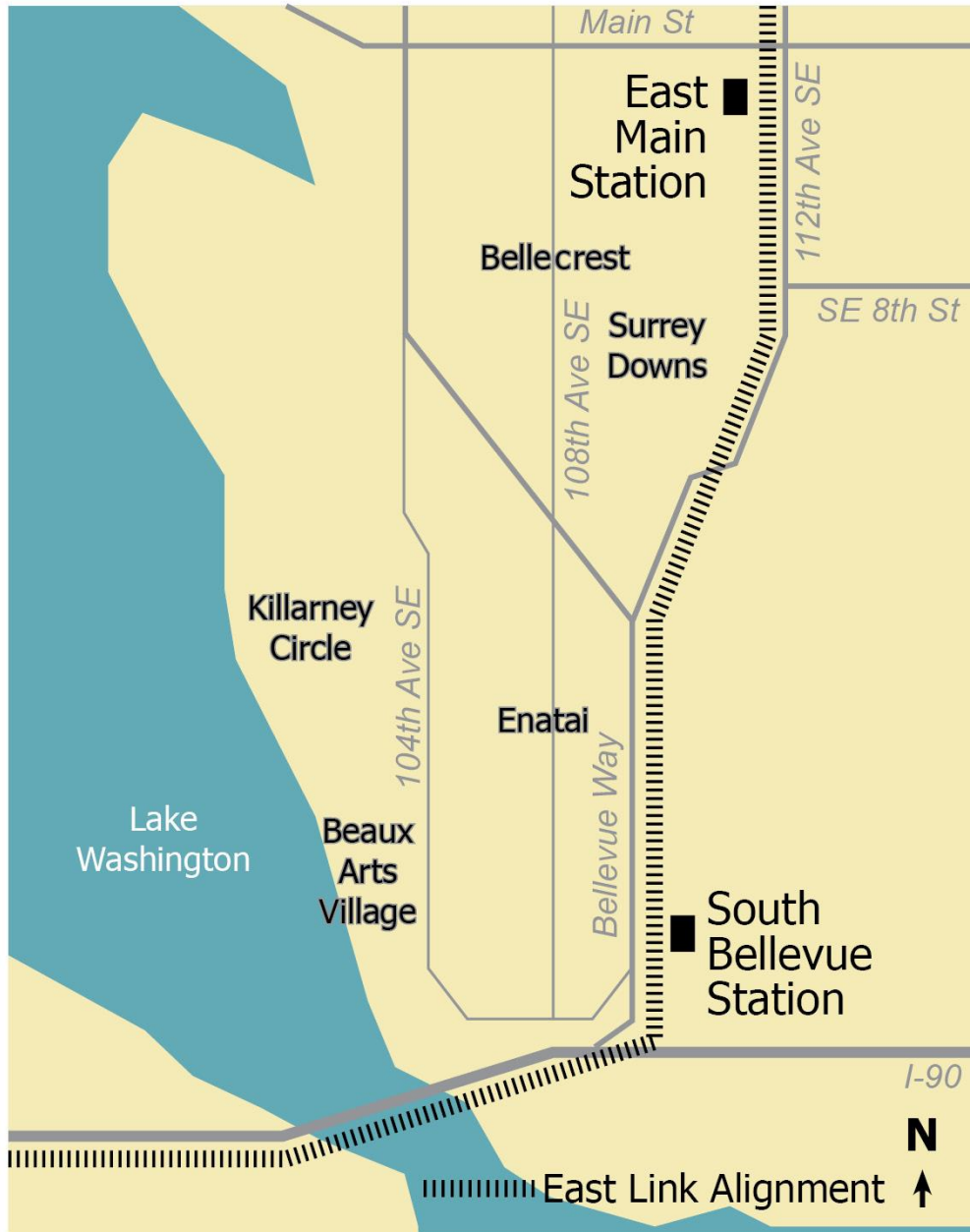
- 6:00 - 6:30 Open House
- 6:30 - 7:00 Overview
- 7:00 - 7:45 Break out session
- 7:45 - 8:00 Wrap Up

*Please get a
name tag*



SOUTH BELLEVUE EAST LINK CONSTRUCTION
NEIGHBORHOOD TRAFFIC MITIGATION MEETING

APRIL 2016



South Bellevue East Link Construction Neighborhood Traffic Mitigation Meeting

April 27, 2016

6 to 8 p.m.
City Hall

By the end of this meeting, you will

- Have answers to questions about East Link construction
- Learn (more) about known traffic conditions in the South Bellevue neighborhoods
- Hear about anticipated traffic impacts during construction
- In breakout sessions
 - Share your concerns with other neighbors
 - Help prioritize areas of concern
 - Assist the Neighborhood Traffic Mitigation Committee (yet to be formed)



Tonight's agenda

- **Purpose of tonight's meeting**

Marie Jensen, East Link Outreach, Bellevue Transportation Department

- **Overview of Neighborhood Traffic**

John Murphy, Neighborhood Traffic Safety Services

- **Facilitated Table Discussions**

Marcia McReynolds, Bellevue Neighborhood Services

- **Wrap Up**



SOUTH BELLEVUE EAST LINK CONSTRUCTION
NEIGHBORHOOD TRAFFIC MITIGATION MEETING
APRIL 2016

Keep in mind...

- Think outside your front door
- Participate in good faith
- Respect different perspectives
- Problem identify and problem solve
- Understand participants probably feel the same as you about the start of construction
- Welcome new voices to the conversation



Why yet another process?

- Memorandum of Understanding between City and Sound Transit calls for neighborhood involvement process
- Opportunity to address potential traffic impacts during South Bellevue East Link segment
- Feedback to assist Neighborhood Traffic Mitigation Committee



Neighborhood Traffic Mitigation Committee (NTMC) - Mission

Work with the City

to identify ways to lessen neighborhood traffic impacts on Bellevue Way SE and 112th Avenue SE

during the construction of the South Bellevue East Link Segment.



SOUTH BELLEVUE EAST LINK CONSTRUCTION
NEIGHBORHOOD TRAFFIC MITIGATION MEETING

APRIL 2016

More specifically...the role of the NTMC

- Understand **current traffic conditions** in affected areas
- Based upon feedback from neighbors and staff input, **consider possible traffic impacts** from East Link construction
- Identify **temporary mitigation** based upon the City's Neighborhood Traffic Safety Services program



The role of the NTMC (continued)

- Understand that proposed tools may be implemented during construction upon a **demonstrated need**
- Accept that the **City will determine feasibility** of recommendations
- Know that **City will coordinate with Sound Transit's contractor** for installation



Broad and geographically balanced representation

- One (1) designee from neighborhood associations – determined by Board
 - Bellecrest, Enatai, Surrey Downs, Beaux Arts Village
- Community members “at large”
- Up to 15 total members
- No appointment process
- Advisory: City Police, City Fire, School District, King County Metro, Sound Transit



NTMC member responsibilities

- Work collaboratively with fellow neighbors, members & city staff
- Set expectations of impacted neighborhoods
- Share information with fellow neighbors
- Stay focused on mitigating anticipated traffic impacts on Bellevue Way SE and 112th Avenue SE
 - Closure of South Bellevue Park & Ride will be addressed through a separate process by Sound Transit
- Commit to full participation at meetings to be scheduled by the City
 - First NTMC meeting: May 11
 - Complete work by September



Traffic Conditions in South Bellevue Neighborhoods

John Murphy

Neighborhood Traffic Safety Services

South Bellevue Park & Ride: Timing

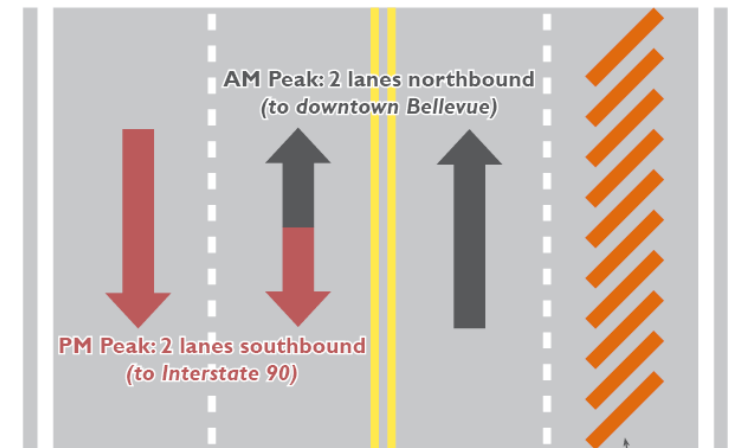
- Contractor on board by November 2016
- Closure of P&R late 2016; closed for 5 years
- Staging of construction equipment within site
- Construction between P&R and 112th Ave SE expected 26-28 months
 - Contractor incentives to complete 19-21 months
- Sound Transit's outreach plan – Initiate around September 1
 - Notify commuters
 - Alternate commuter parking lots near existing bus stops



Construction along Bellevue Way and 112th Ave SE

- Bellevue Way SE:
 - Full weekend closures
 - Partial weekend closures (only one northbound lane)
 - 26-28 months work on Bellevue Way (up to 16 months of reversible lane configuration)
- 112th Ave SE:
 - Construction along 112th Ave SE is anticipated to happen concurrently with the work on Bellevue Way
 - Temporary 2 lane bypass road between SE 15th St and SE 8th St
- ***Many variables during construction phase; no contractor on-board***

Bellevue Way Reversible Lane Configuration



When Bellevue Way is in a reversible lane configuration, the northbound curb lane of Bellevue Way will be closed

Previous work in neighborhoods

- **Long-history working on neighborhood traffic**
 - Surrey Downs: entry treatments, medians, RPZ
 - Bellecrest: speed humps, access restrictions, medians, residential area signs, Residential Parking Zone (RPZ)
 - Enatai: speed humps, raised crosswalks, entry treatments, medians, residential area signs
- **Many in the room involved in other work related to East Link:**
 - South Bellevue and East Main station area planning
 - Light Rail Permitting Citizen Advisory Committee (CAC)
- **Continue to be concerns unrelated to East Link construction**



Transportation network context

- Neighborhoods constrained by downtown, freeways, slough
- Few north-south connections
- Streets serve different purposes

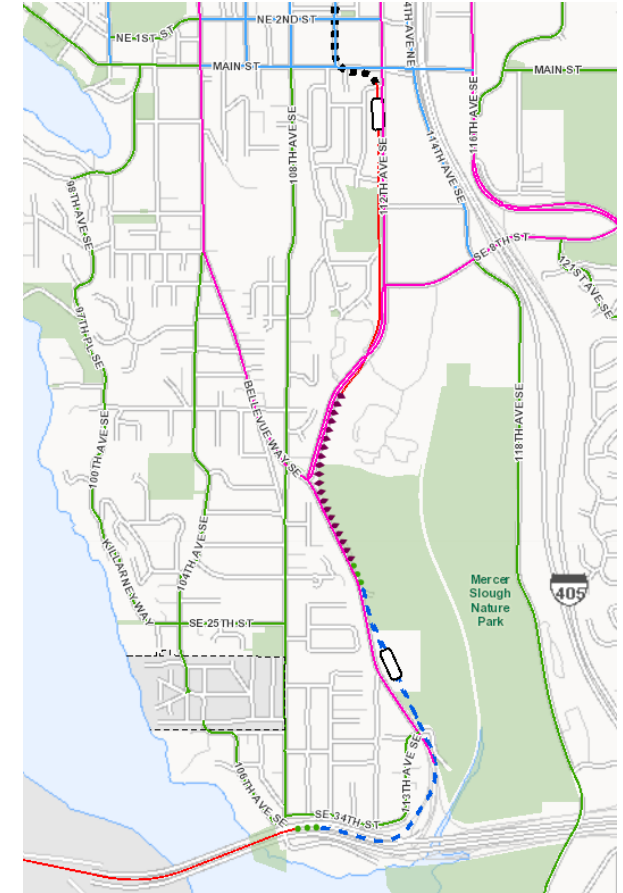
Residential

Collector Arterial

Minor Arterial

Major Arterial

Freeway



SOUTH BELLEVUE EAST LINK CONSTRUCTION
NEIGHBORHOOD TRAFFIC MITIGATION MEETING

APRIL 2016

Key neighborhood traffic concerns

In South Bellevue Neighborhoods.....

- Traffic diverted from major and minor arterials to collector arterials and residential streets (e.g. from Bellevue Way to 104th Ave SE)
- If traffic is diverted onto neighborhood streets, people are not driving appropriately (i.e. faster than they should)
- Difficulty entering and exiting neighborhoods during peak travel times



South Bellevue Neighborhoods: Known Traffic Concerns and Existing Conditions

East Link Construction Neighborhood Traffic Mitigation



Legend

- City Limits
- School Property
- City Parks
- Beaux Arts
- Enatai
- Bellevue
- Killarney Circle
- Surrey Downs
- School Property
- City Parks
- East Link Stations
- East Link Route
- Collector Arterial
- Minor Arterial
- Major Arterial
- Residential Area Sign



Sources:
City of Bellevue

Previously identified concern



Gray boxes denote previously identified concerns as stated by residents through previous outreach efforts

Existing traffic calming elements

White boxes denote existing traffic calming elements

Definitions:

COLLECTOR ARTERIALS are two or three-lane streets that collect (or distribute) traffic within a neighborhood and provide the connections to minor or major arterials. Collectors serve neighborhood traffic, and also provide access to abutting land uses. They do not carry much through traffic, and are designated to be compatible with residential neighborhoods and local commercial areas.

MINOR ARTERIALS provide connections between major arterials and concentrations of residential and commercial activities. The amount of through traffic is less, and there is more service to abutting land uses. Traffic flow is given preference over lesser streets.

MAJOR ARTERIALS provide efficient direct routes for long-distance auto travel within the region. Streets connecting freeway interchanges to major concentrations of commercial activities are classified as major arterials. Traffic on major arterials is given preference at intersections, and some access control may be exercised in order to maintain the capacity to carry high volumes of traffic.



Disclaimer: This document is for informational purposes only. It is not intended to be used as a basis for any legal or financial decision. The City of Bellevue is not responsible for any damages or losses resulting from the use of this map. The City of Bellevue is not responsible for any damages or losses resulting from the use of this map. The City of Bellevue is not responsible for any damages or losses resulting from the use of this map.

CTION
EETING

Mitigation tools

- **Temporary features in the roadway**
 - Full closure
 - Partial closure
 - One lane zone/chicane
 - Speed humps (rubber material)
- **Signs**
 - Radar signs
 - Local access only signs
 - Turn restrictions





Facilitated Discussion

Marcia McReynolds
Neighborhood Services


Table discussions

- Broad representation at each table
- Role of facilitator
 - Keep conversation going
 - Ask “round-robin” questions
 - Record key perspectives
 - Make a note of other items



South Bellevue segment East Link construction

1. In addition to existing traffic concerns, what other concerns do you have? (write on map)
2. What are your three (3) most important traffic impact issues to be addressed? (mini dots)
 - At least one dot to be placed outside your neighborhood
3. Of the most important traffic impact issues to be addressed, what tools and locations do you want the Traffic Committee to consider? (sticky notes)



Place a star on
the map where
you live



SOUTH BELLEVUE EAST LINK CONSTRUCTION
NEIGHBORHOOD TRAFFIC MITIGATION MEETING

APRIL 2016

Wrap up; what's next

- Traffic Mitigation Committee to begin its work
 - First Meeting: May 11, 5-7 pm, City Hall
 - Additional meetings through August
 - Propose mitigations to City by September
- Summary of table discussions and meeting posted to City's website



Thank you so much