

# Station Area Planning Overview

## *How is station area planning different from station design?*

- Sound Transit is responsible for station design, which is about the physical layout, appearance and function of the light rail station.
- Station area planning is about everything else that happens outside of the station and it is the responsibility of the City of Bellevue.

## *What's the purpose of station area planning?*

The two main reasons for planning around stations are:

- 1) to create a more compatible fit with the neighborhood; and
- 2) to take advantage of the station location by making it easier to get to.

## Station Area Planning Overview

### Some comments we have heard so far...

- Keep neighborhood single family – do not allow transit-oriented development (TOD) at this station
- Increase ease and safety of walking to station
- Prevent station patrons from parking in neighborhood
- Keep easy access from neighborhood to Mercer Slough trails
- Deter vehicles from driving through neighborhood to avoid traffic on Bellevue Way
- Create safe bike route through neighborhood to station

## **BELLEVUE WAY HOV LANE STATUS**

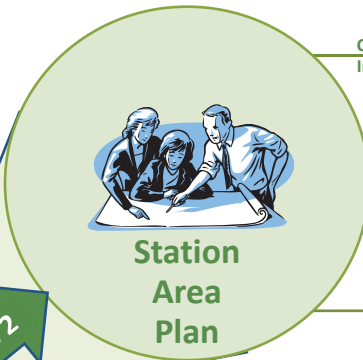
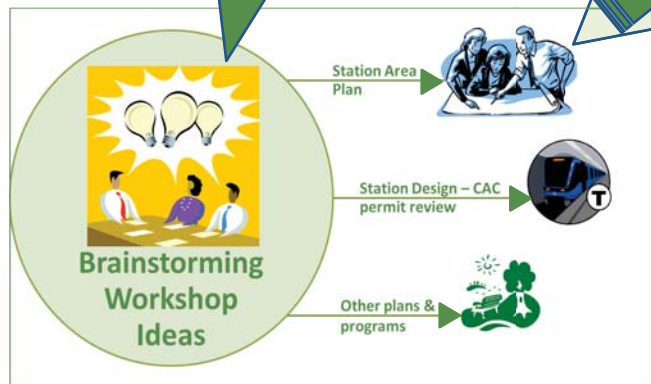
- **Separated from East Link project** – Bellevue City Council and Sound Transit Board separated prospective HOV lane (from 112th Ave SE “Y” to South Bellevue park-and-ride) from East Link extension project. There is still an HOV lane from park-and-ride to I-90.
- **Included in 2013-2024 Transportation Facilities Plan (TFP)** – Bellevue City Council approved including HOV project in TFP, so it is still a possible future project but there is currently no funding for project.
- **Candidate project in 2014 for funding** – project to be considered for funding in City’s 2015-2021 Capital Investment Program (CIP). Information about next budget process, including CIP update, should be available on city’s website mid- to late-spring of 2014. City Council action on CIP in late 2014.
- **HOV project not currently designed** – if funded in CIP, would then go into design and, depending on additional funding, construction.

STATION AREA PLANNING PROPOSED SCHEDULE												
	2013			2014				2015				
	2nd QTR	3rd QTR	4th QTR	1st QTR	2nd QTR	3rd QTR	4th QTR	1st QTR	2nd QTR	3rd QTR	4th QTR	
South Bellevue P&R	*	[Dark Blue Bar]			[Light Blue Bar]							
Downtown	Part of Downtown Livability Initiative			[Light Blue Bar]								
130th Ave NE	*	Add'l OTAK work w/GTC			[Light Blue Bar]							
Hospital/Wilburton	*			*Start w/Ped access		[Dark Blue Arrow] Completion in 2016						
East Main St	*			[Dark Blue Bar]			[Light Blue Bar]					
120th Ave NE	*					[Dark Blue Bar]				[Light Blue Bar]		
	* Early scoping of issues for each station.											
East Link Project	[Green Bar] Final Design							[Green Arrow] Construction thru 2022				
Light Rail Overlay CAC	[Green Bar] Permitting (approx.)											
	[Dark Blue Bar]		Station Area planning analysis & draft plan									
	[Light Blue Bar]		Commission and/or Council review & action									

# SOUTH BELLEVUE STATION AREA PLAN

**Step 1:**  
determining  
what to study  
in the plan.  
*We are here!*

**Step 2:**  
analyzing  
issues & ideas  
generated  
during Step 1.



**Step 3:**  
developing  
draft plan for  
public review  
& comment.

**Step 4:**  
preparing  
final draft of  
plan &  
recommended  
actions.

## ONGOING PUBLIC INVOLVEMENT