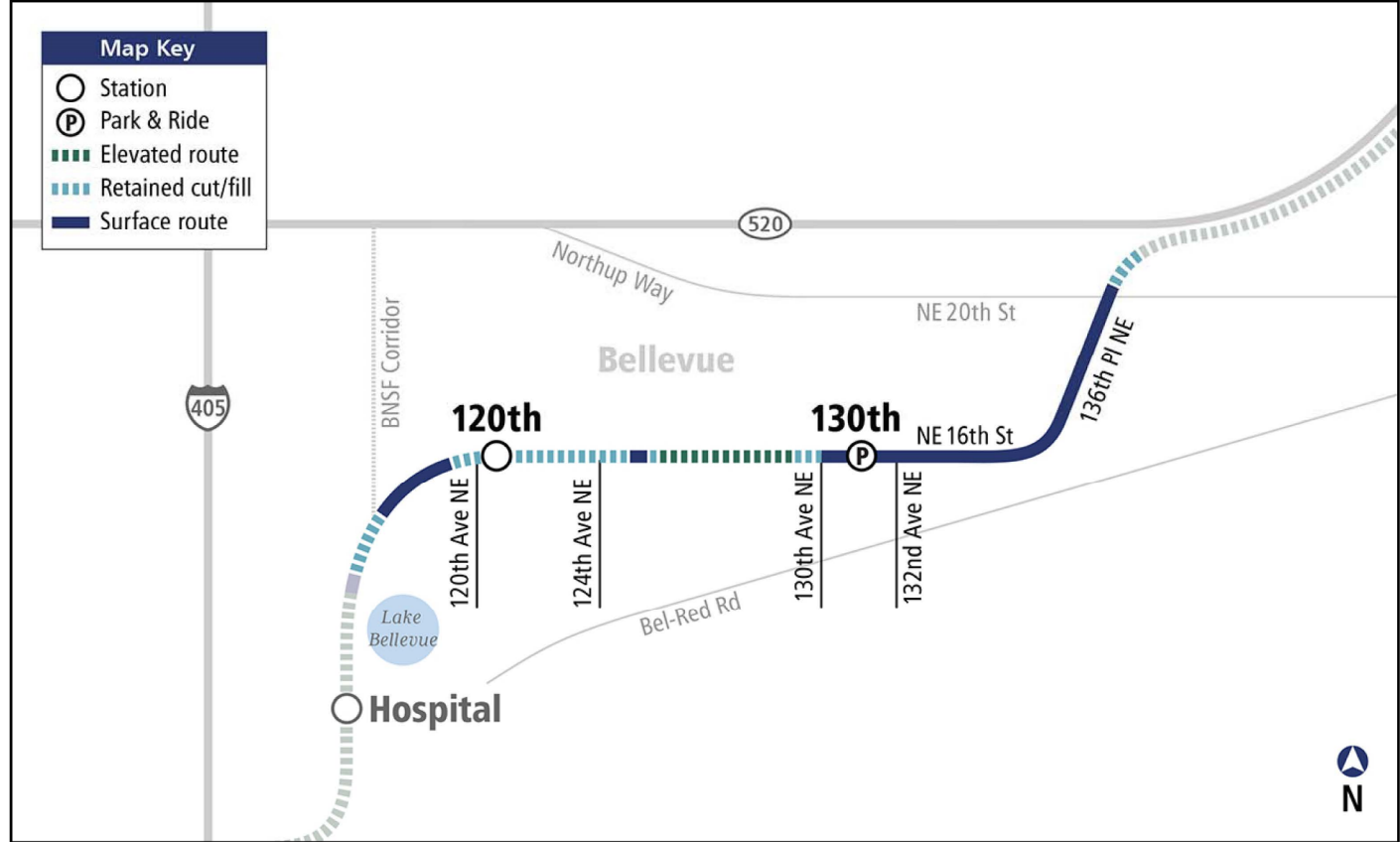




# Spring District/120<sup>th</sup> Station Context

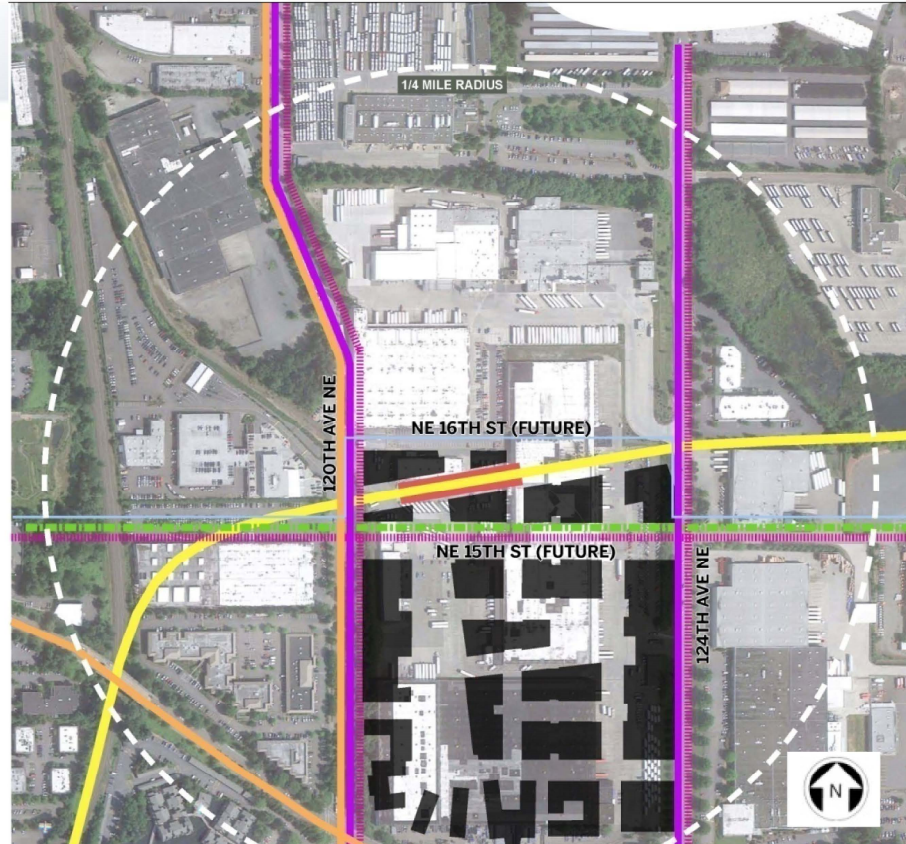
CAC September 16, 2015

# Spring District /120<sup>th</sup> Station Context



**BelRed Alignment (2013 Design)**

# Spring District /120<sup>th</sup> Station Context



## LEGEND

BUS ROUTE

BICYCLE ROUTE

BICYCLE LANE

OFF STREET PATH

PROPOSED  
NEW SIDEWALKS

LIGHT RAIL TRACKS

STATION

PATRON CATCHMENT  
AREA

FUTURE DEVELOPMENT

City of Bellevue and  
Sound Transit planned  
improvements

**Neighborhood Context (2013 Design)**

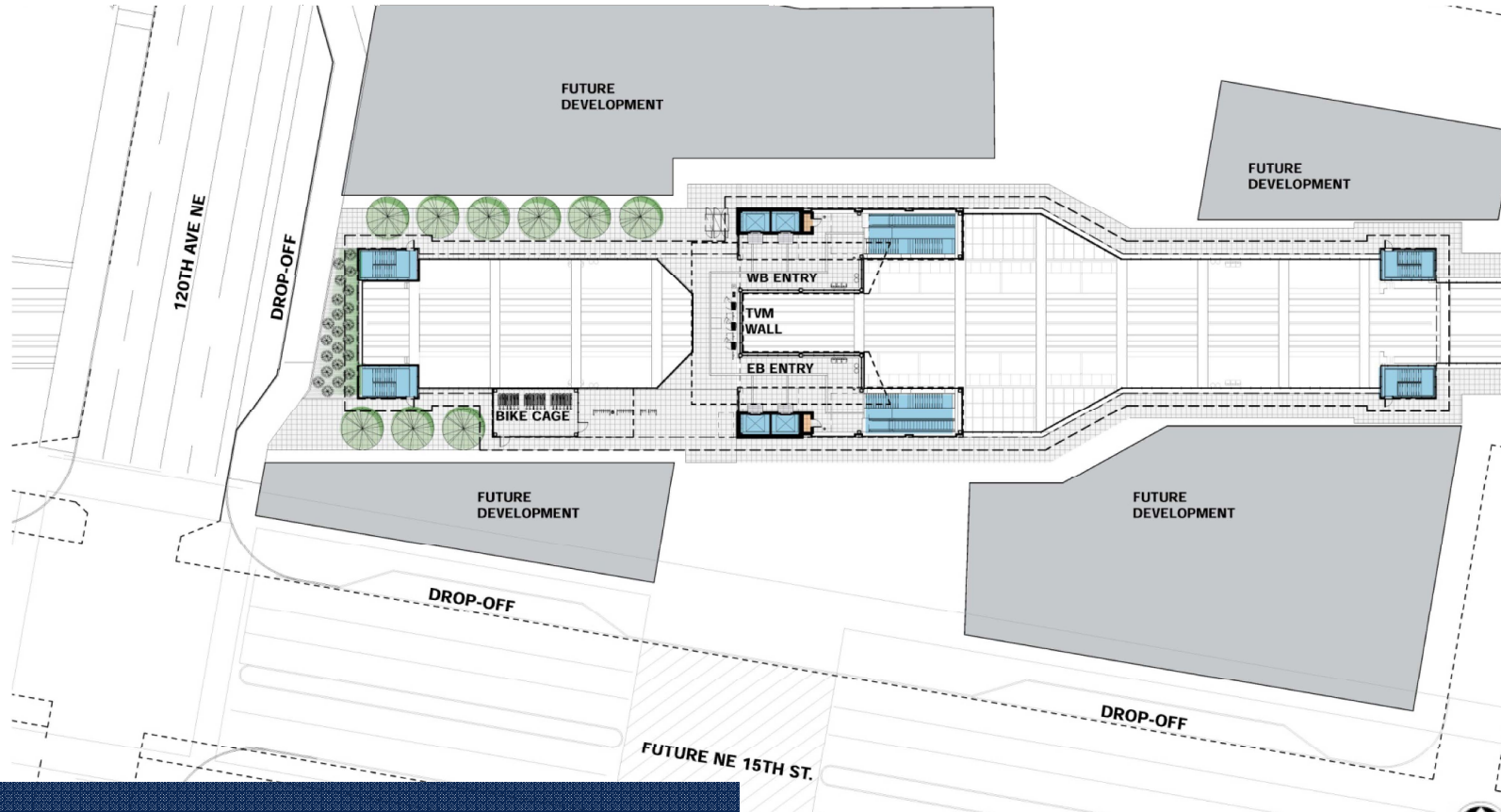




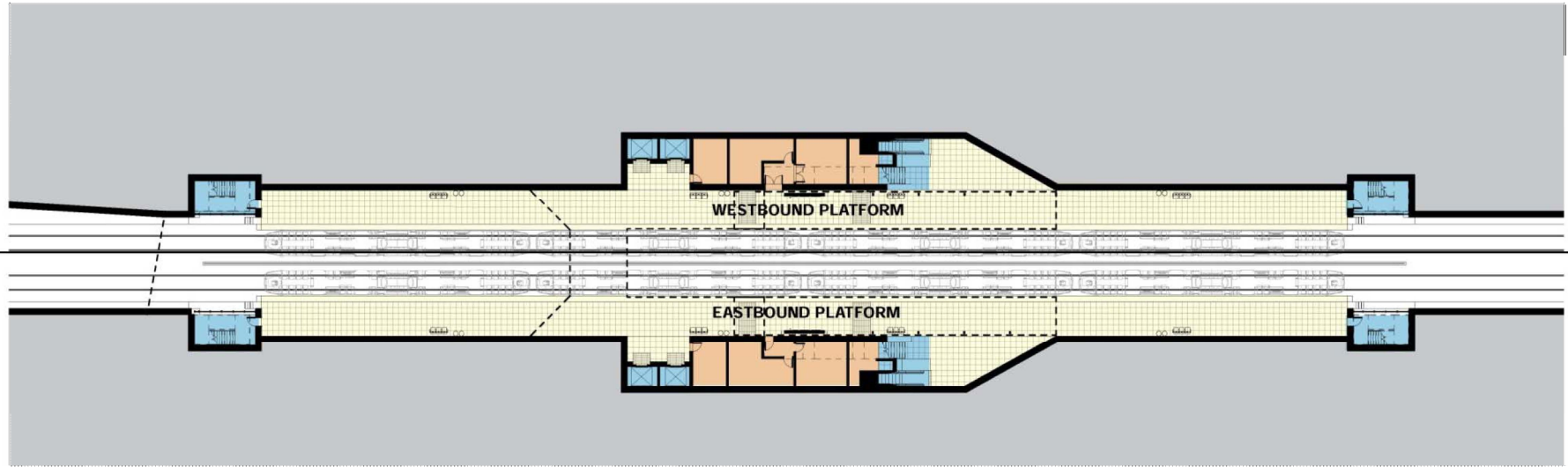
**View From 120<sup>th</sup> Ave NE (2013 Design)**



# Spring District /120<sup>th</sup> Station Context



**Surface Site Plan (2013 Design)**



**Platform Level Plan (2013 Design)**



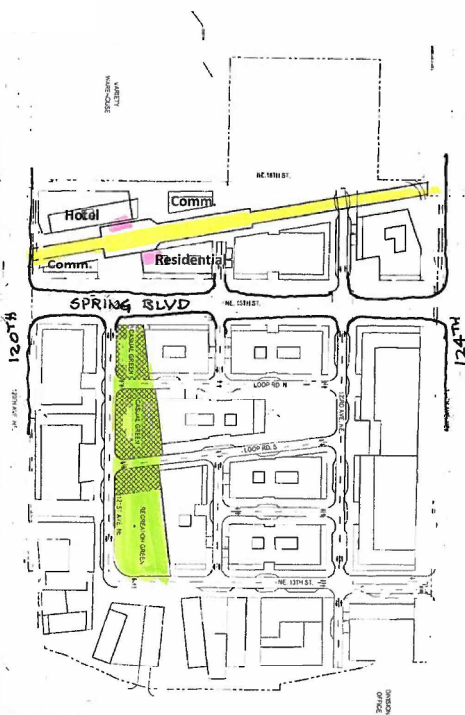
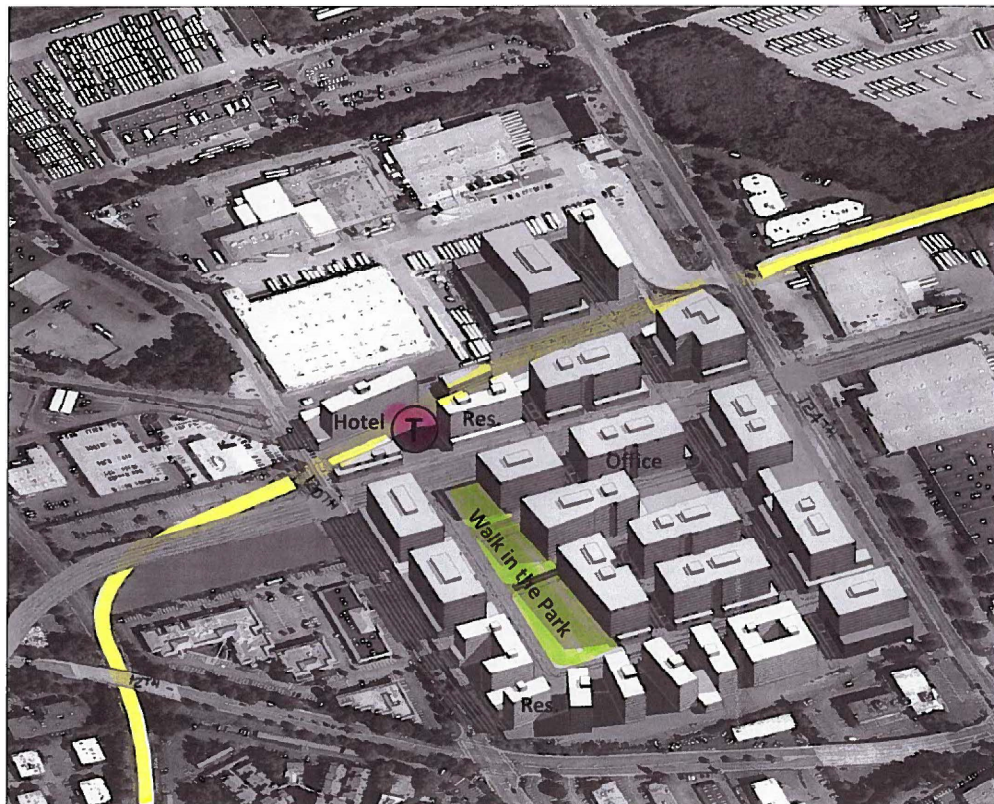
**View at Platform Level (2013 Design)**



Station to fit within context of the future development.

Site improvements will accompany construction of adjacent buildings.

Interim pathways to connect station to existing street(s).

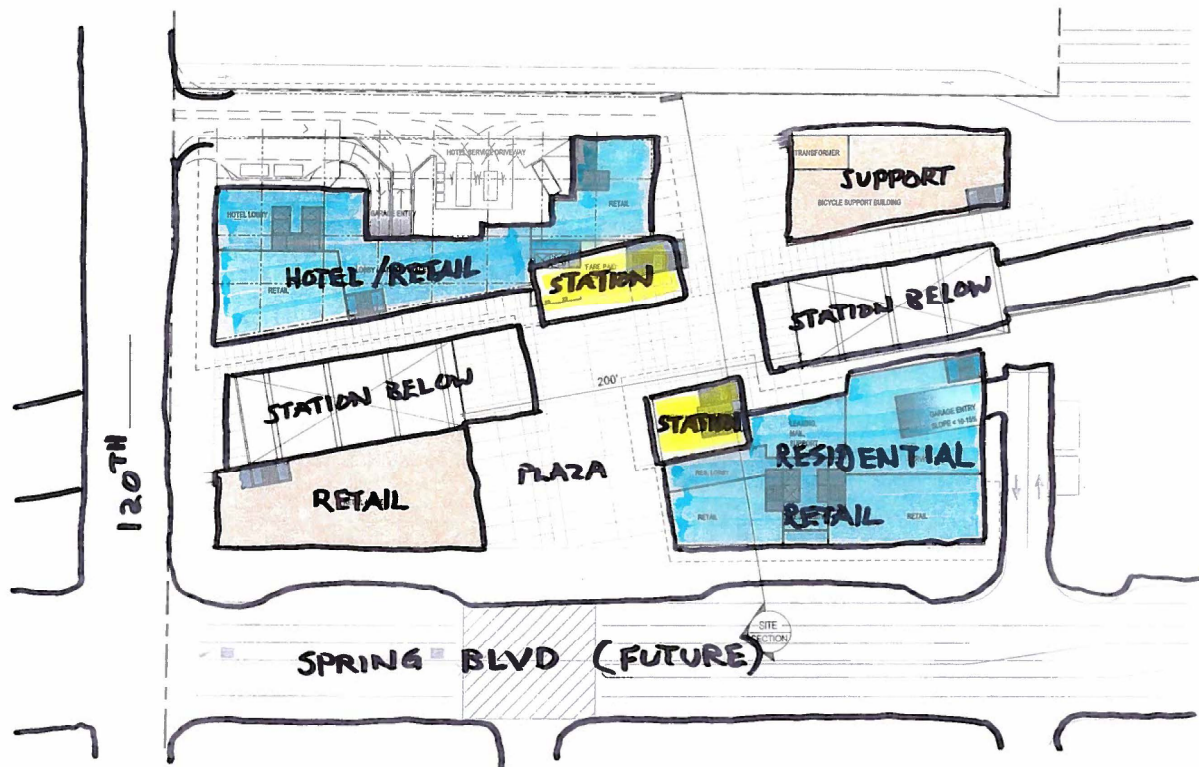


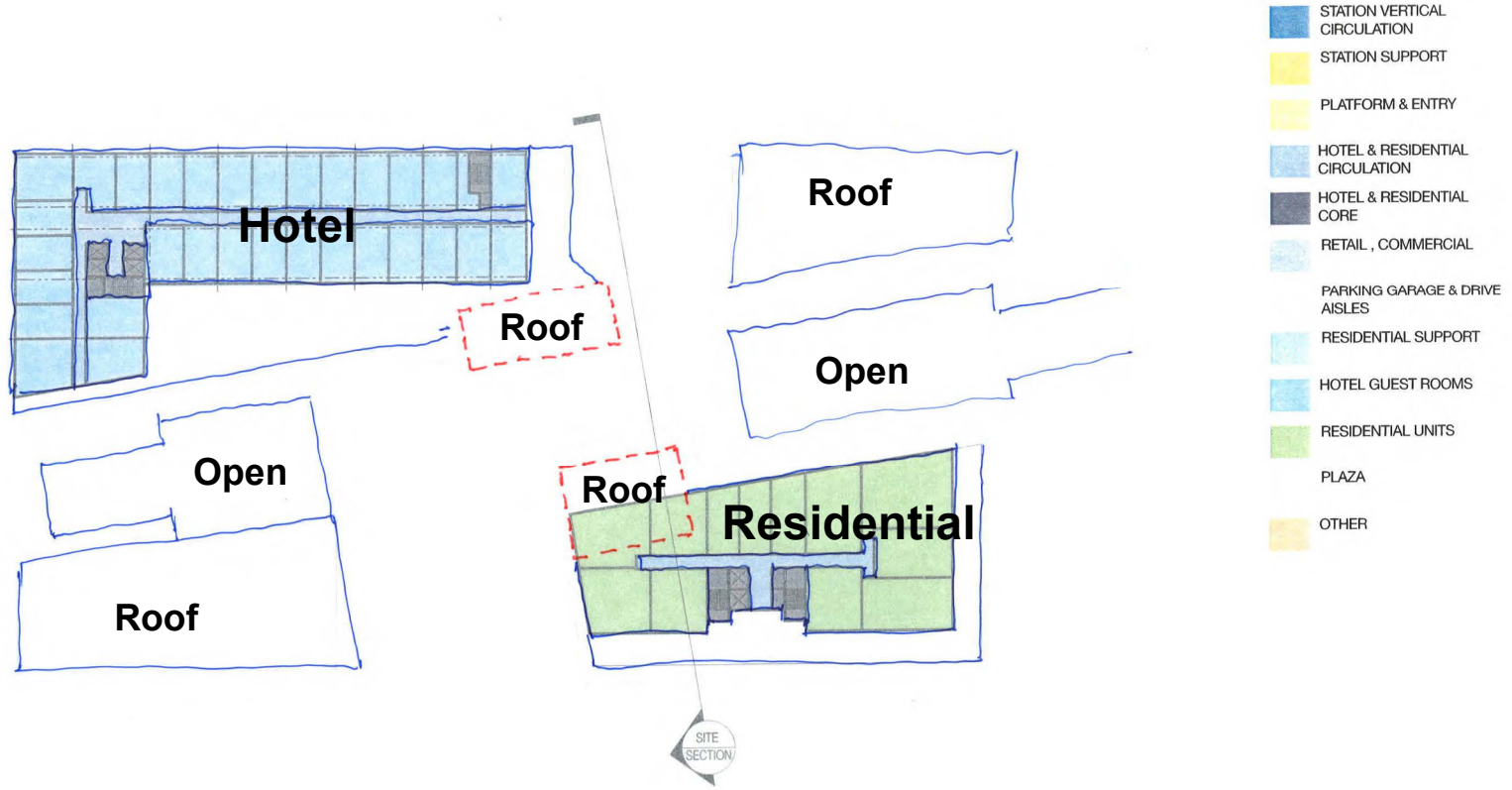
## 2015 Design Program:

Station entrances “within”  
future Spring District buildings.

Large plaza spanning station  
trench – 160 ft -200 ft wide.

Interim site condition until  
Spring District buildings and  
Spring Blvd built.

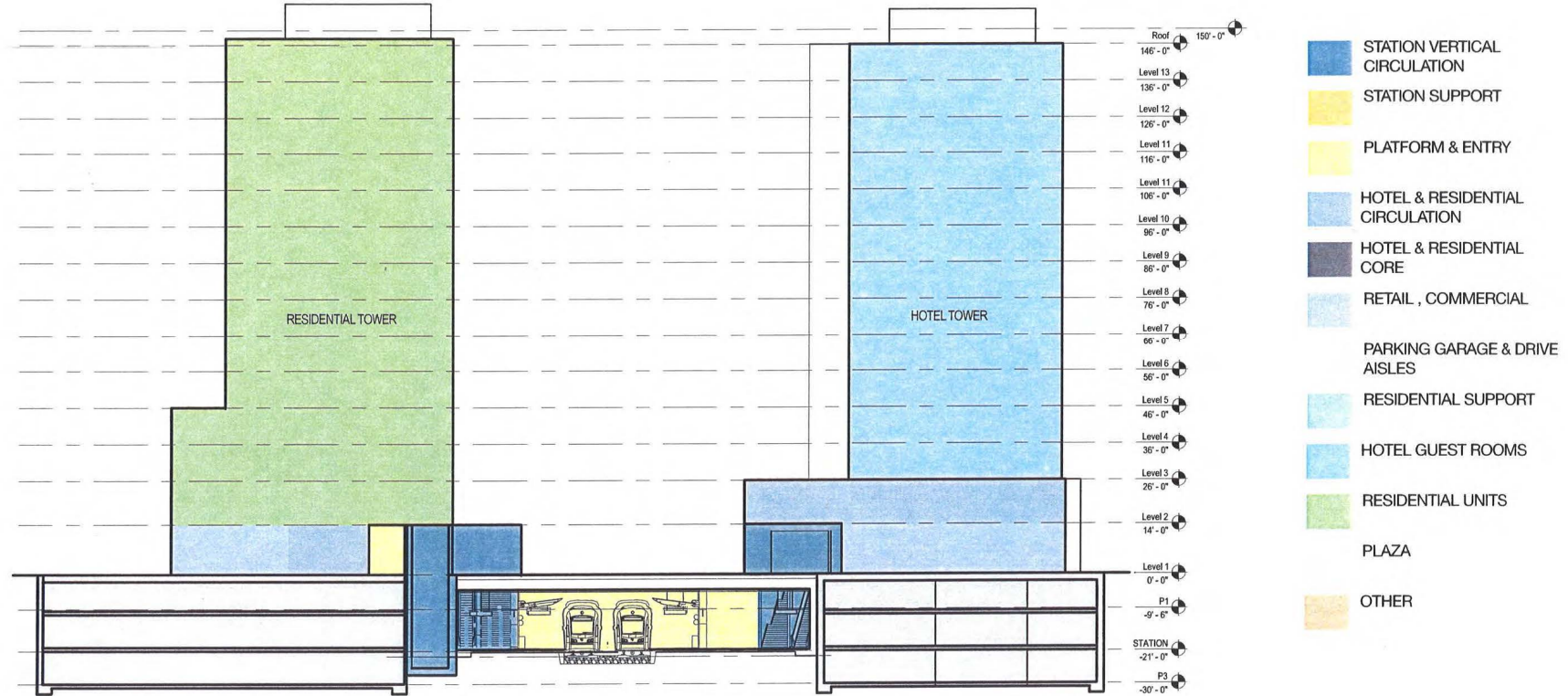




**Station Roof Plan (Spring Dist. Upper Flrs.)**



# Spring District /120<sup>th</sup> Station Context



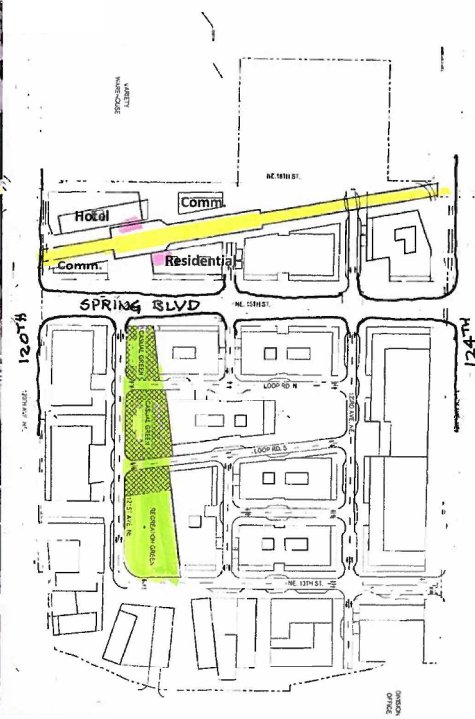
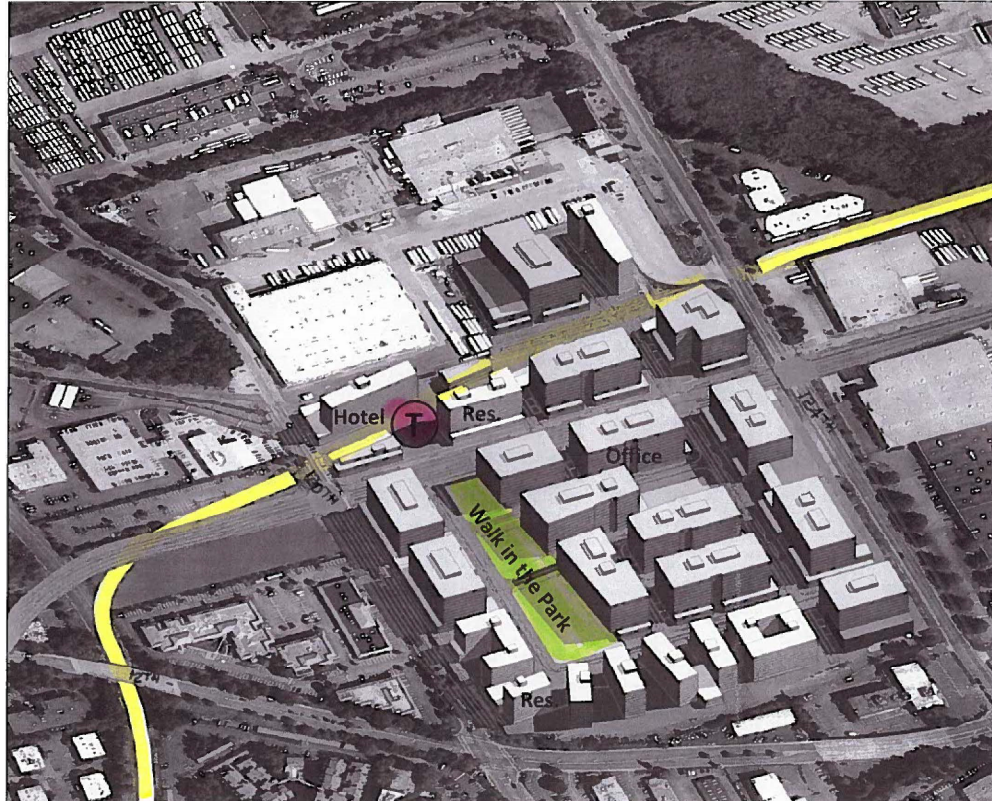
## Site Section

# Spring District /120<sup>th</sup> Station Context

Station to fit within context of the future development.

Site improvements will accompany construction of adjacent buildings.

Interim pathways to connect station to existing street(s).







# Questions