



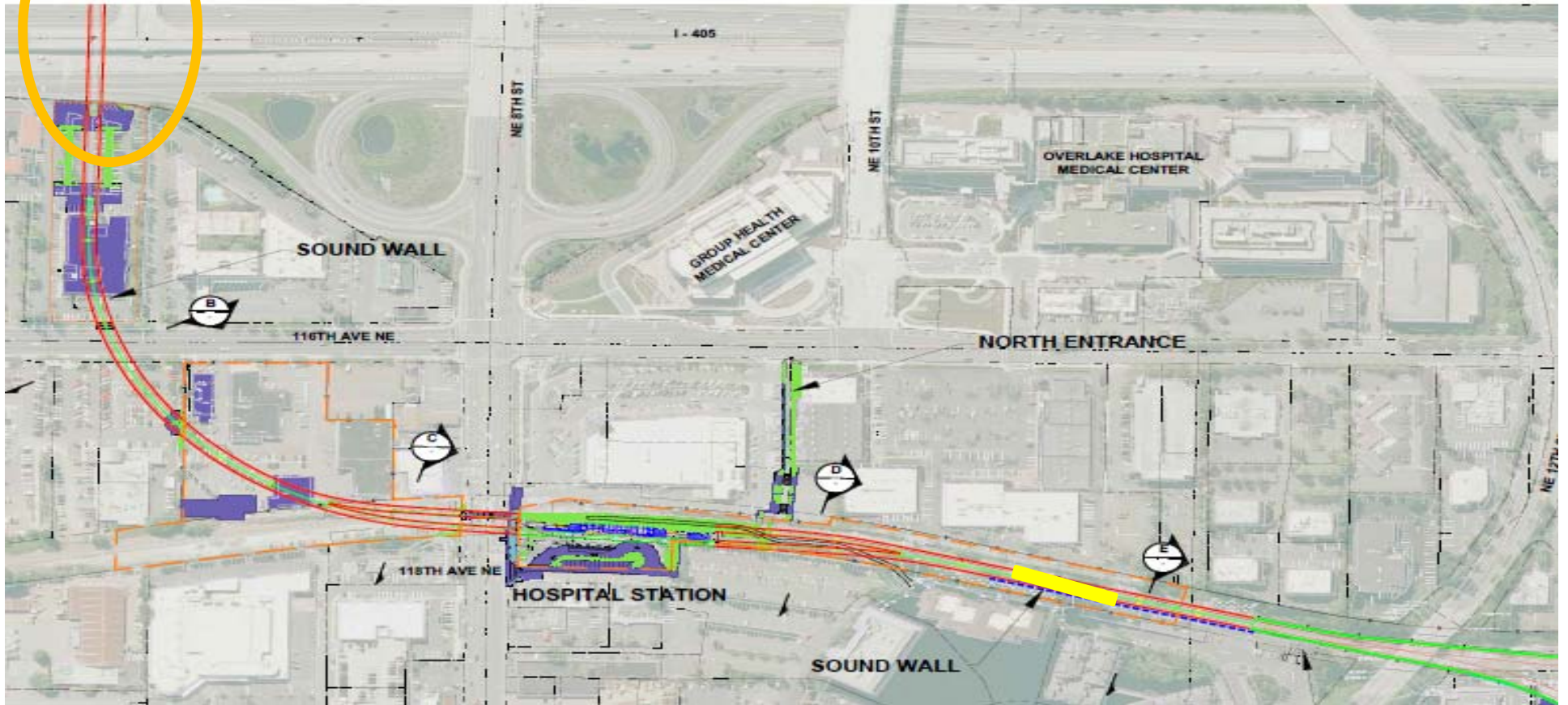
Wilburton Station Area

CAC 07/15/15





Longspan Structure at I-405

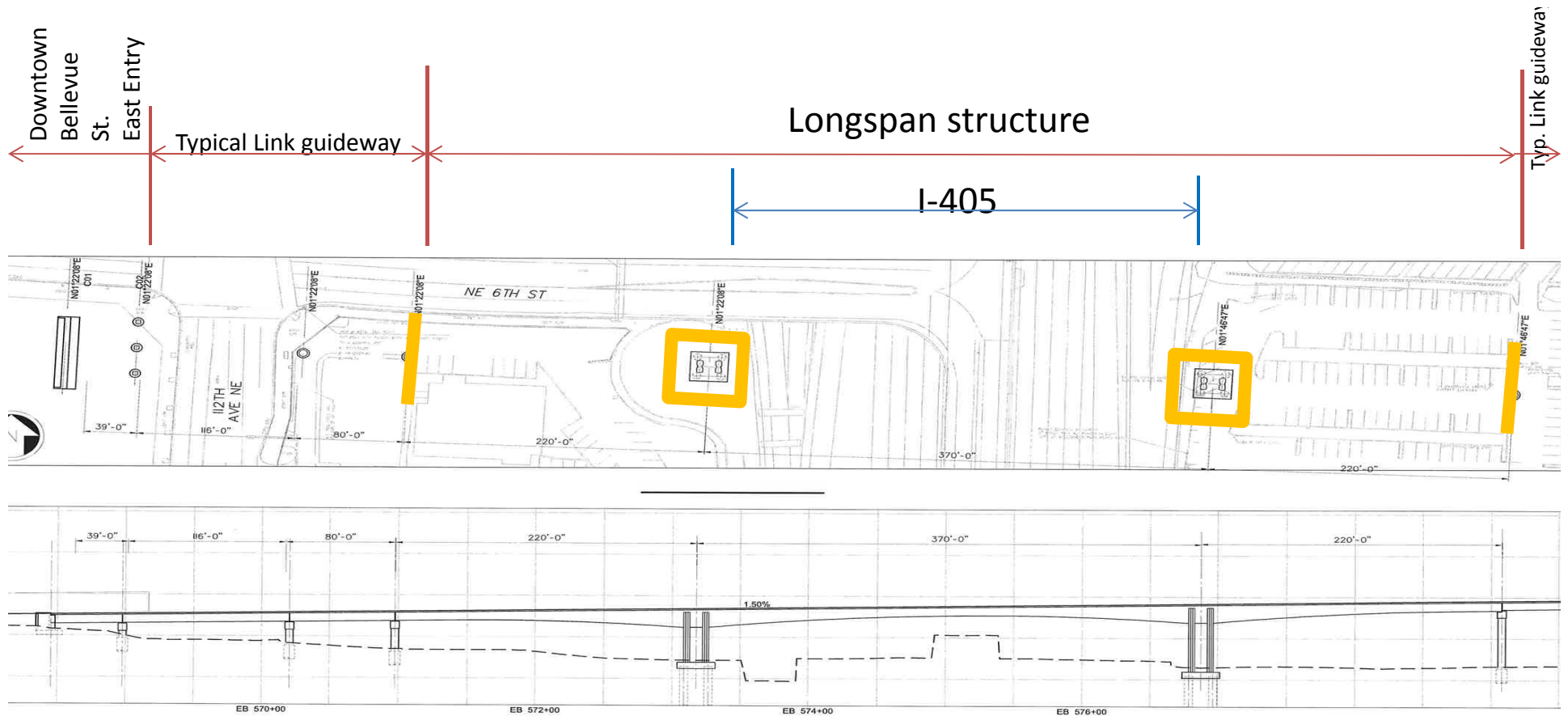


Longspan Structures







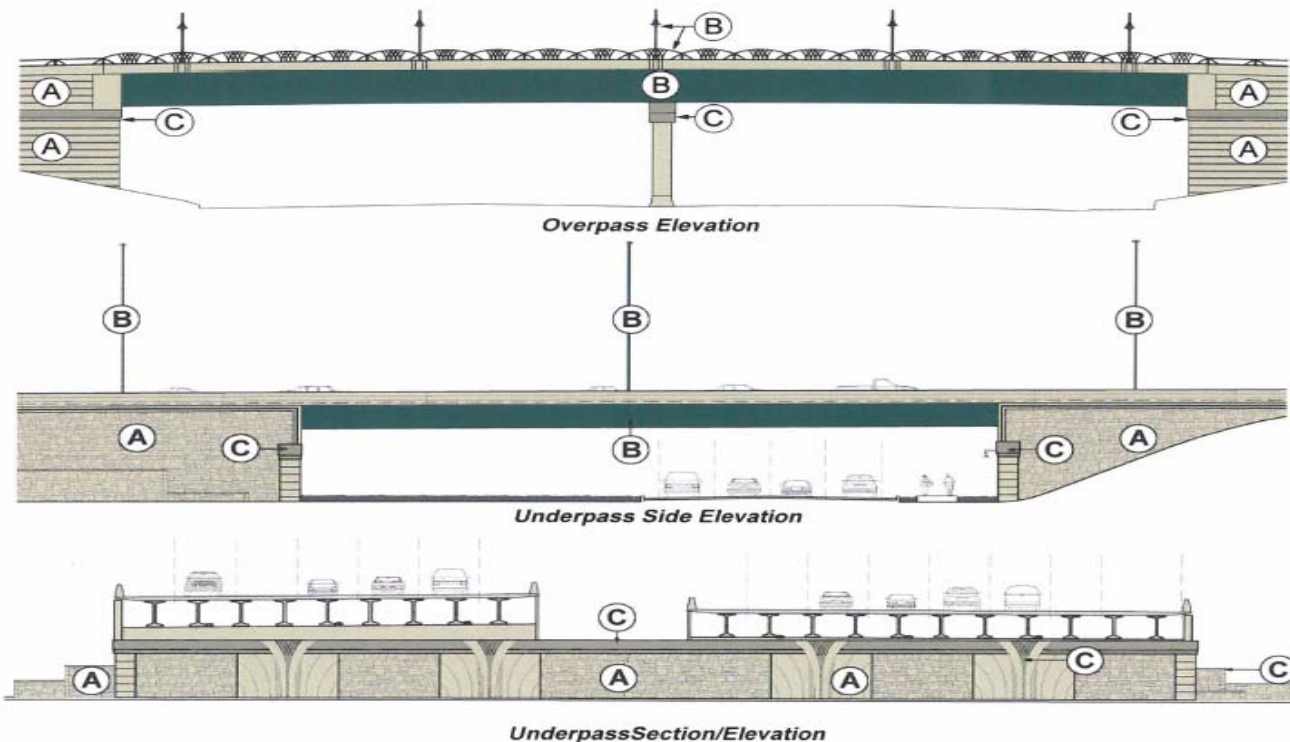


Typical Longspan over I-405

I-405 Urban Design Criteria

INTERSTATE 405 URBAN DESIGN CRITERIA

THE WASHINGTON STATE DEPARTMENT OF TRANSPORTATION



A

Color A:
WSDOT Standard Color:
'Mt. St. Helens'
Applications:
Base Color Throughout:
Barriers (Roadway, Bridge, Overpass, and Transitions)
Retaining Wall Cap (when used with Barrier)
Retaining Walls
Abutment Walls
Noise Walls
Columns

B

Color B:
WSDOT Standard Color:
'Cascade Green'
Applications:
Bridge Super-Structure including all sides of girders
All Metal Work:
Mainline Lighting
Under-bridge Lighting -*powder coat*
Pedestrian Lighting -*powder coat*
Pedestrian Fencing -*powder coat*
Sign Structures -*powder coat*
Signal Light Structures
ITS Equipment (poles, cabinets, etc.) -*powder coat*

C

Color C:
WSDOT Standard Color:
'Mt. Baker'
Applications:
Accent Areas:
Retaining Wall Cap (when used without Barrier)
Noise Wall Cap and Post
Abutment Cap
Abutment Medallion Inset
Pier Cap
Column Inset

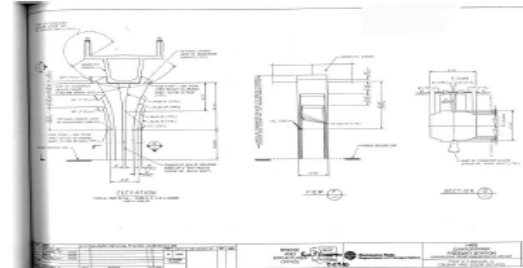
All visible surfaces of listed elements shall be painted.

Utilities shall be painted to match the background surface color.

I 405 Column Designs & ST 405 Crossing

BRIDGE AND STRUCTURES OFFICE

- The Sound Transit column and superstructure interface provides a natural location to incorporate I 405 forms.
- The same approach was employed by Sound Transit when WSDOT designed the Canyon Park Station ten years ago.
- WSDOT proposes no major change in ST's basic column configuration. The focus of form is at the top of columns, not the structural scheme.



PAUL KINDERMAN PE AIA
WSDOT BRIDGE ARCHITECT

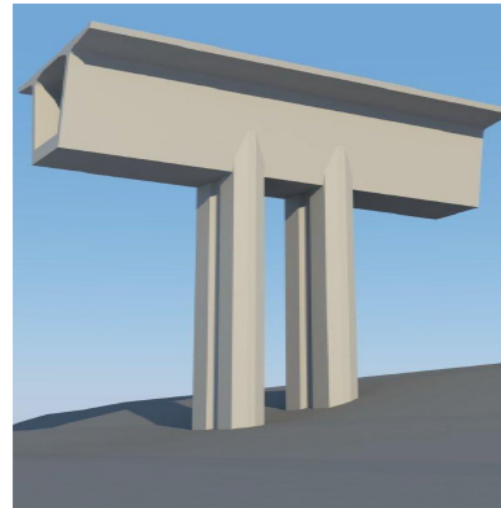
KIM HENRY PE
I 405 PROJECT DIRECTOR



Sound Transit Canyon Park Station implementing
I 405 Context Sensitive Design.

Construction documents
by WSDOT Bridge Office.

Final design by P. Kinderman AIA
with B. Elrod ASLA circa 2004.

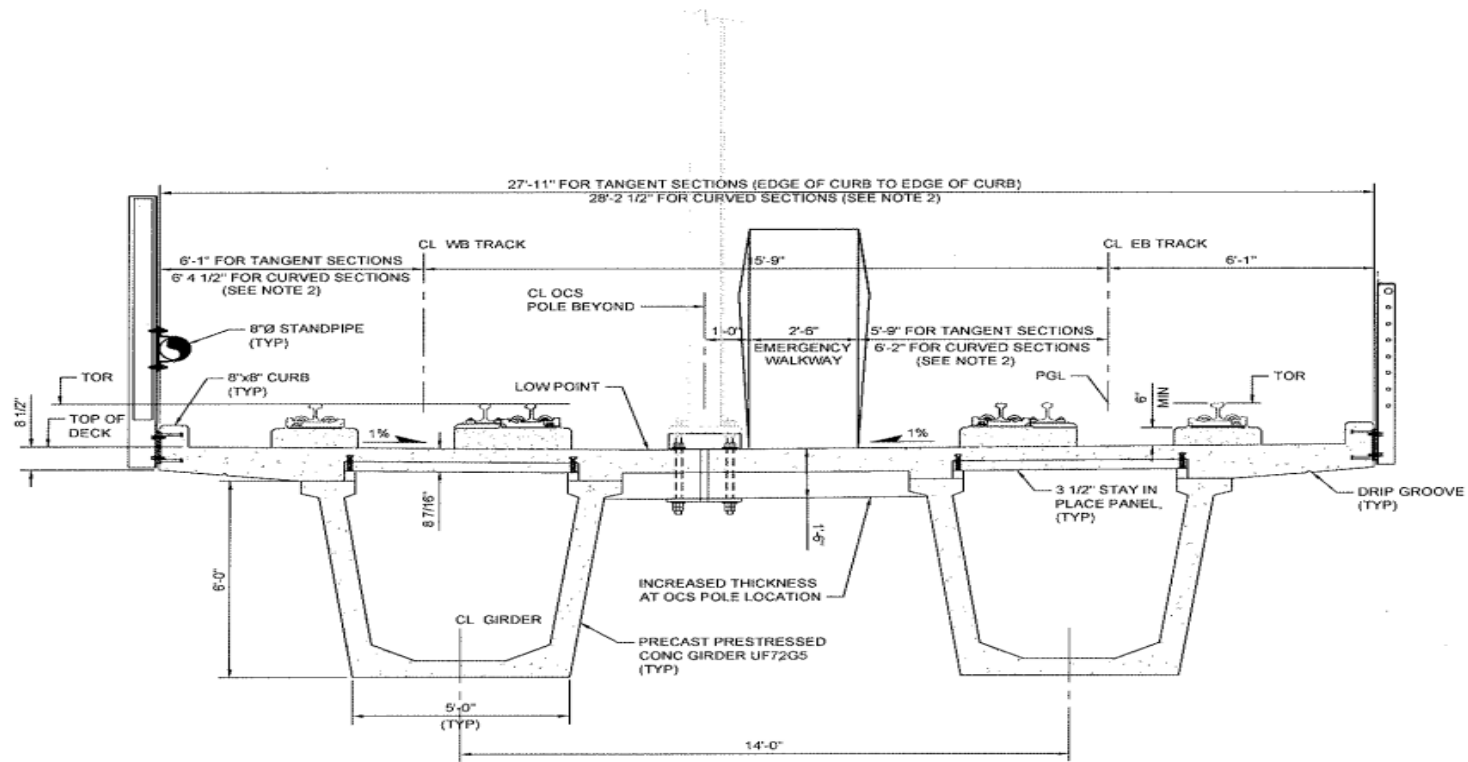


Sound Transit structural configuration remains
unchanged at I 405 crossing.

I-405 Crossing



Typical Double Box Guideway



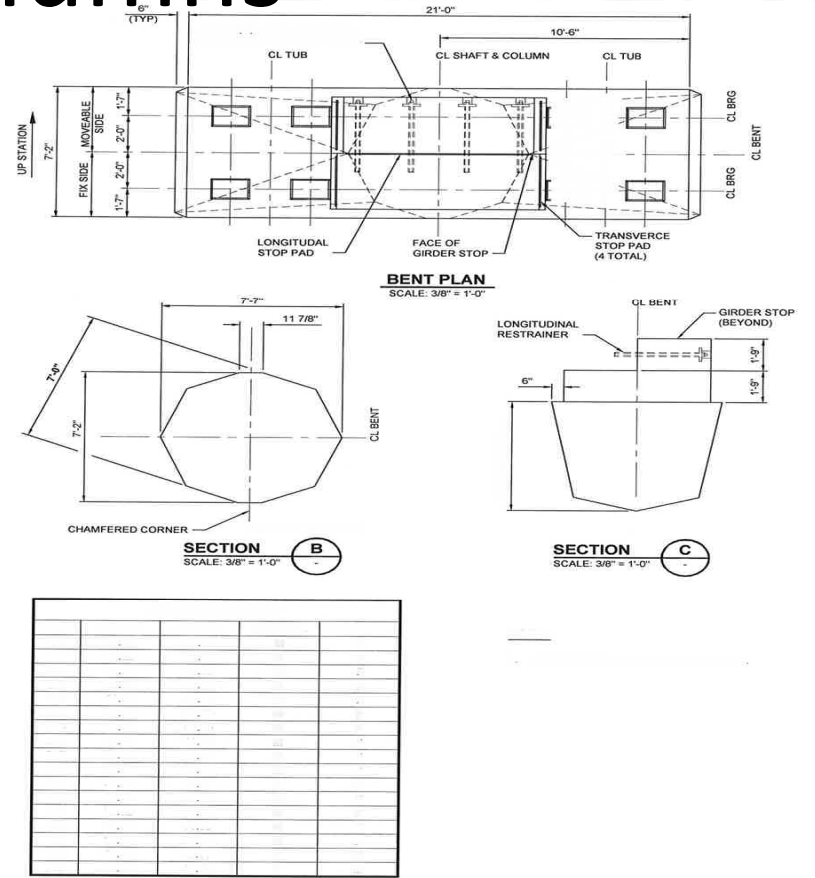
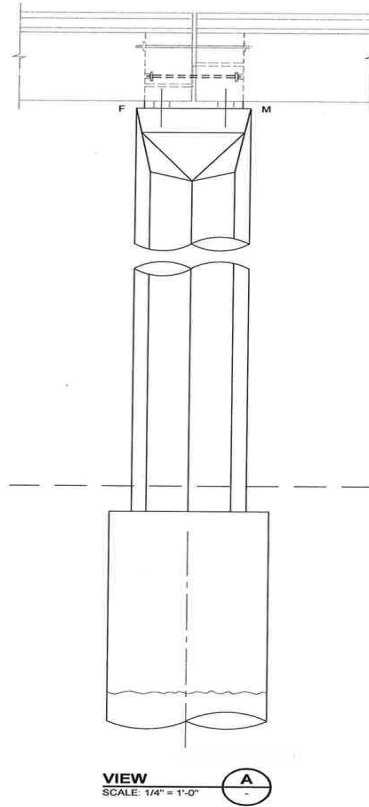
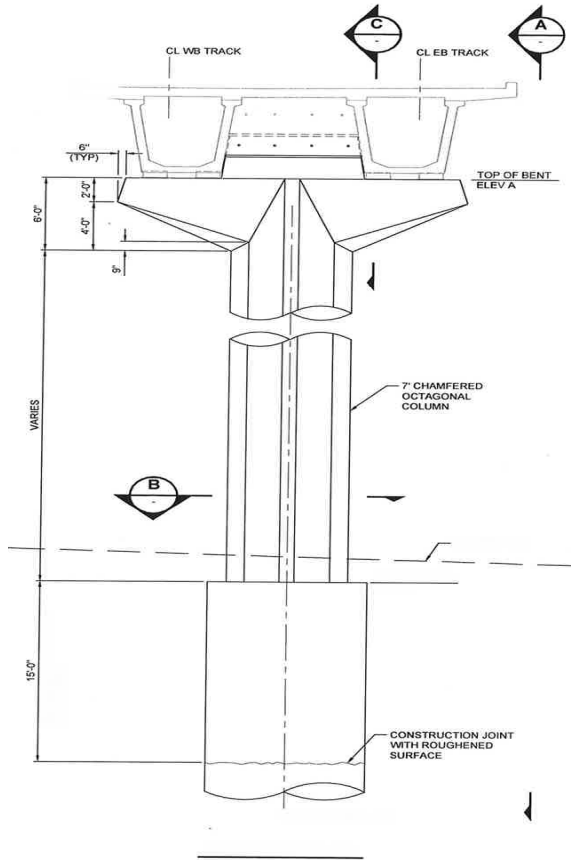
TUB AT TYPICAL DUAL TRACK
SCALE: 1/2" = 1'-0"

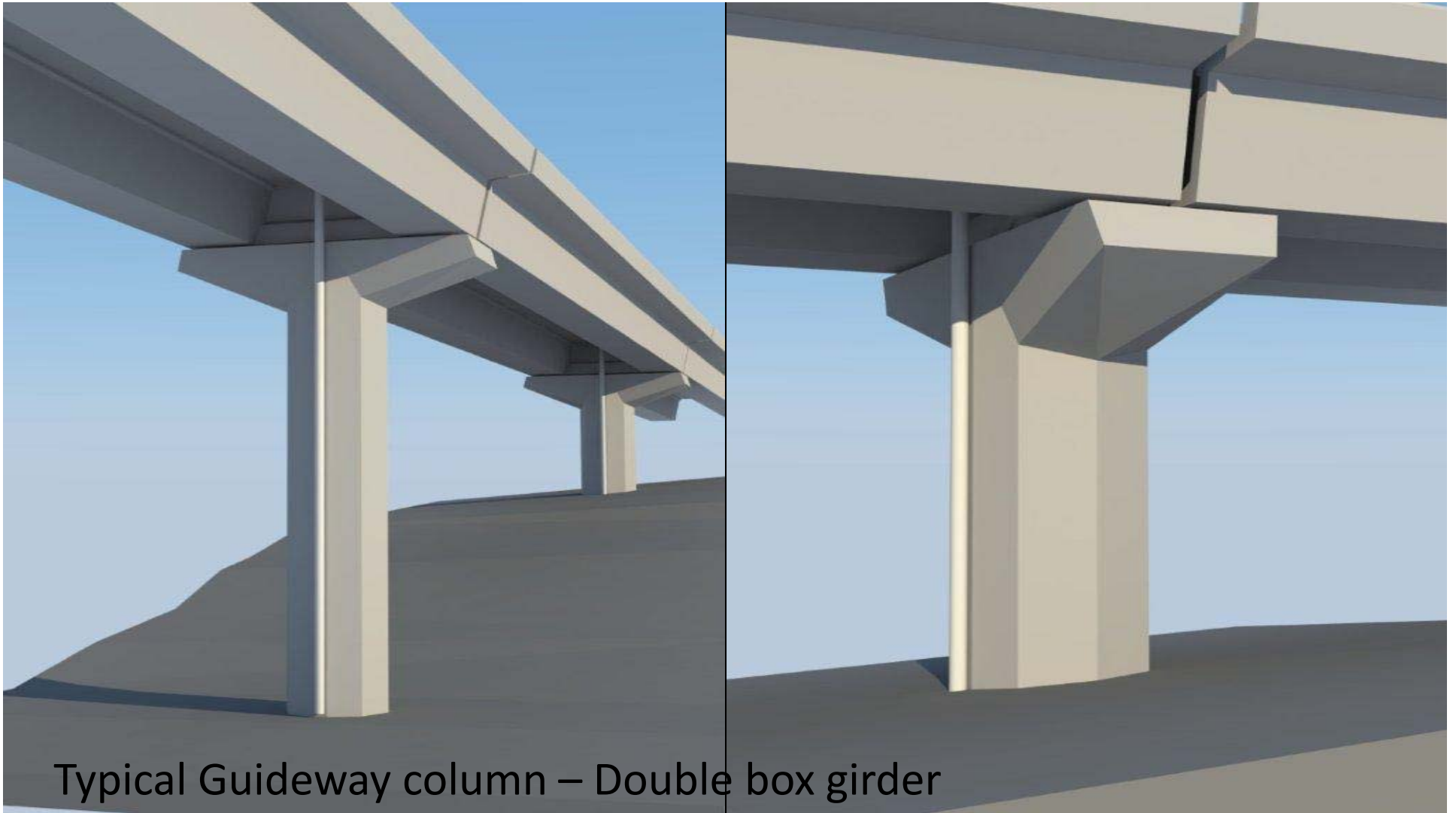
NOTE:

1. TUB GIRDERS ARE STRAIGHT SECTIONS.



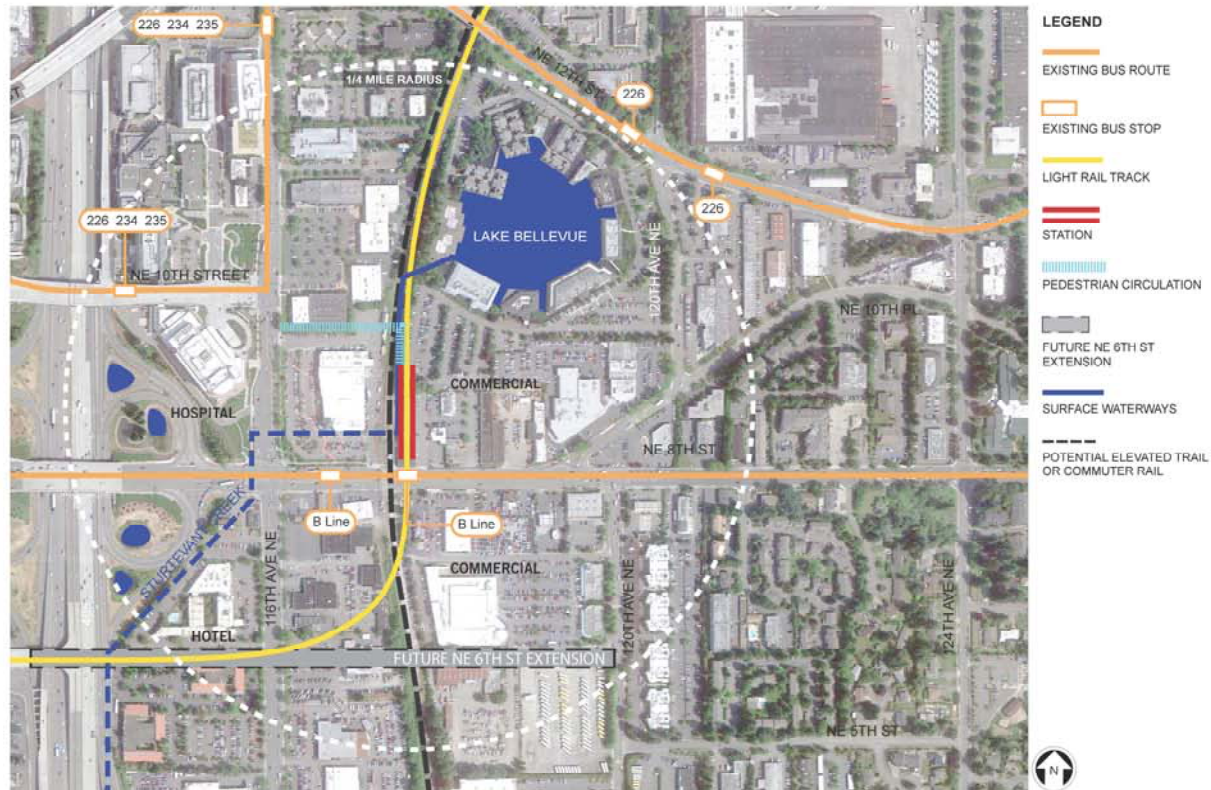
Standard columns





Typical Guideway column – Double box girder

Hospital Station



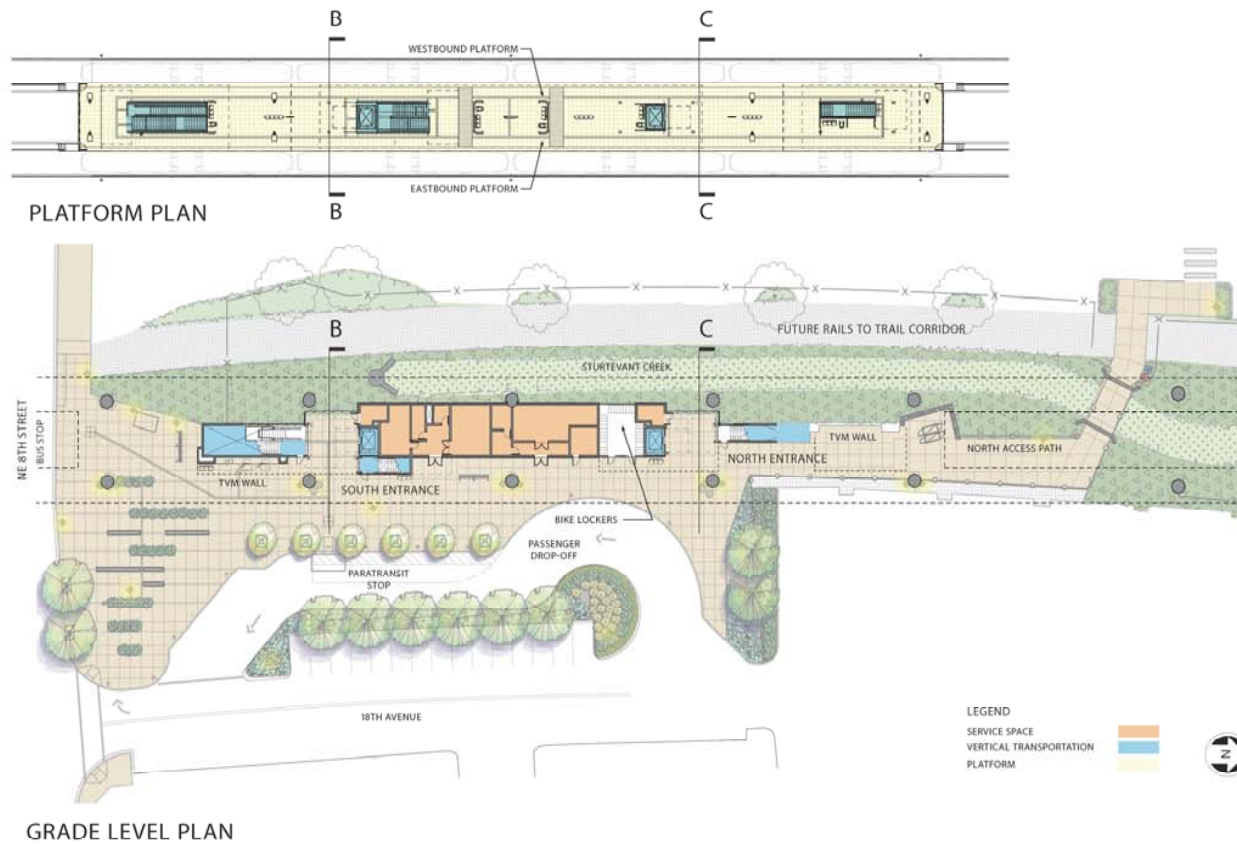
Neighborhood Context Plan

Hospital Station



Station View Looking Northwest

Hospital Station



Grade Level and Platform Plans

Hospital Station



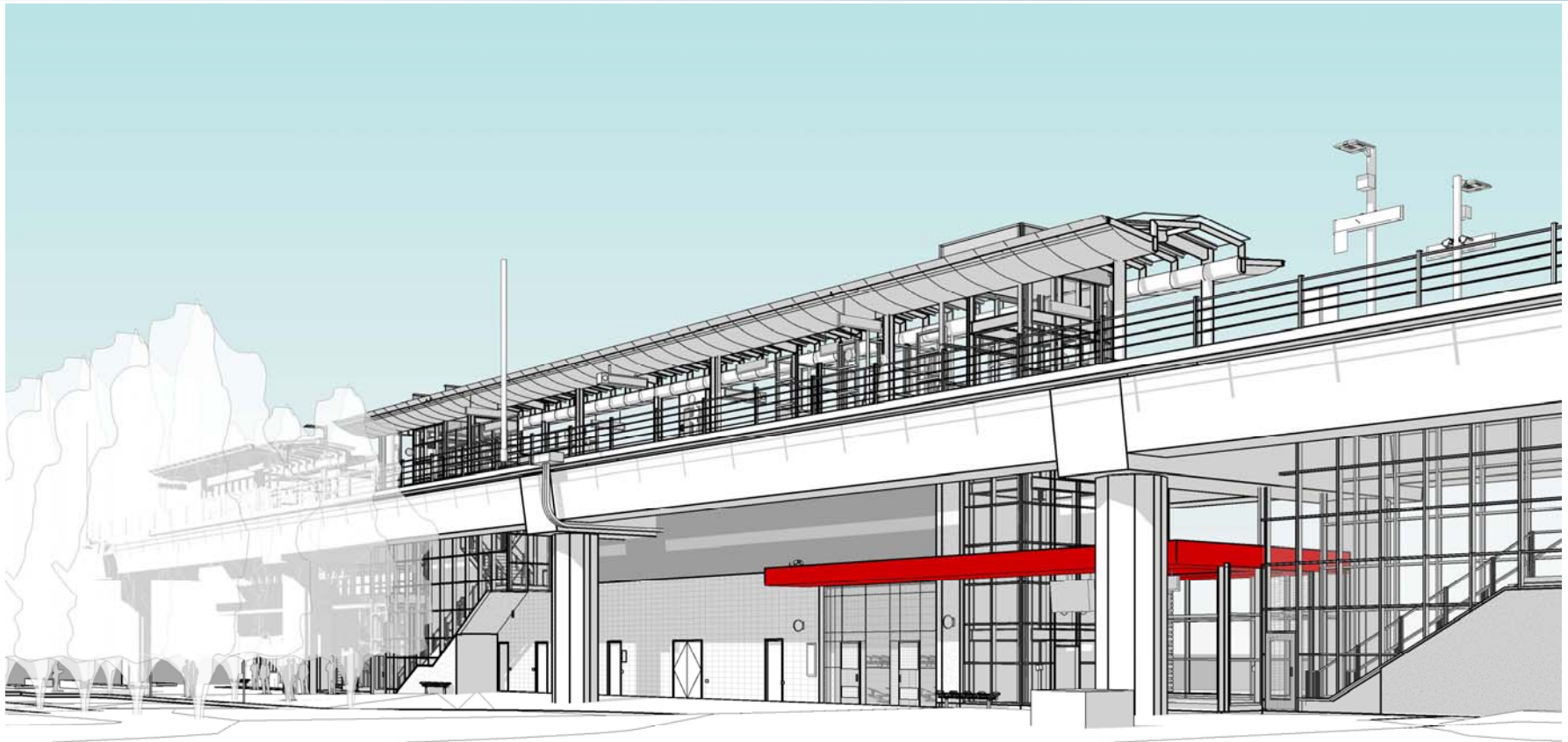
Station North Entrance

Hospital Station



Platform View Looking South

Wilburton Station



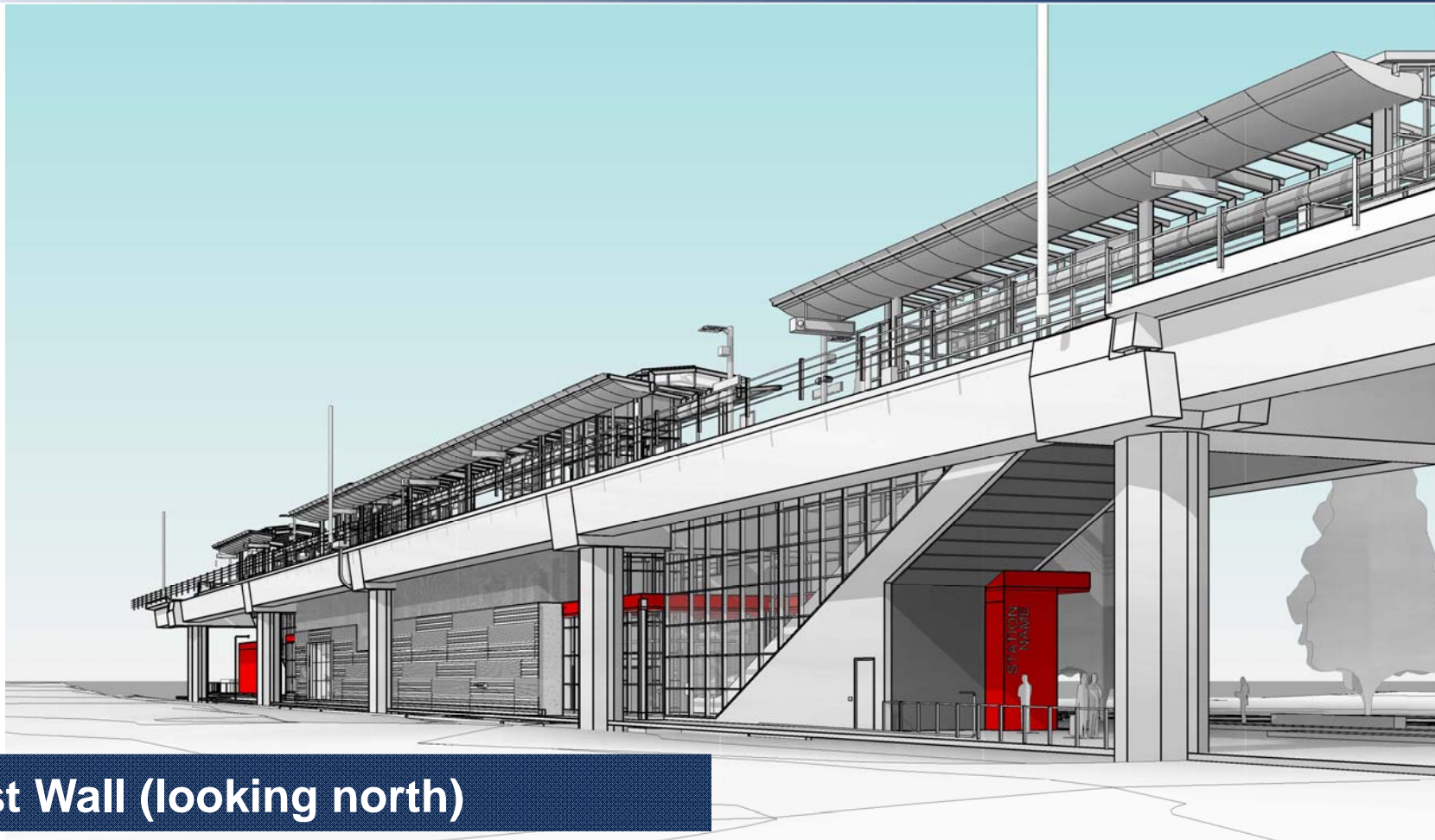
N. Entrance

Wilburton Station



S. Entrance

Wilburton Station



West Wall (looking north)

Hospital Station



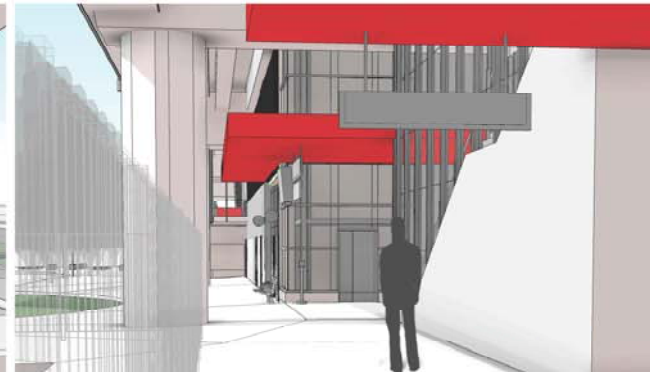
APPROACHING STATION FROM NORTH ACCESS PATH AT EDGE OF WHOLE FOODS PARKING LOT



APPROACHING STATION FROM NORTH ACCESS PATH ON BRIDGE CROSSING STRUTEVANT CREEK



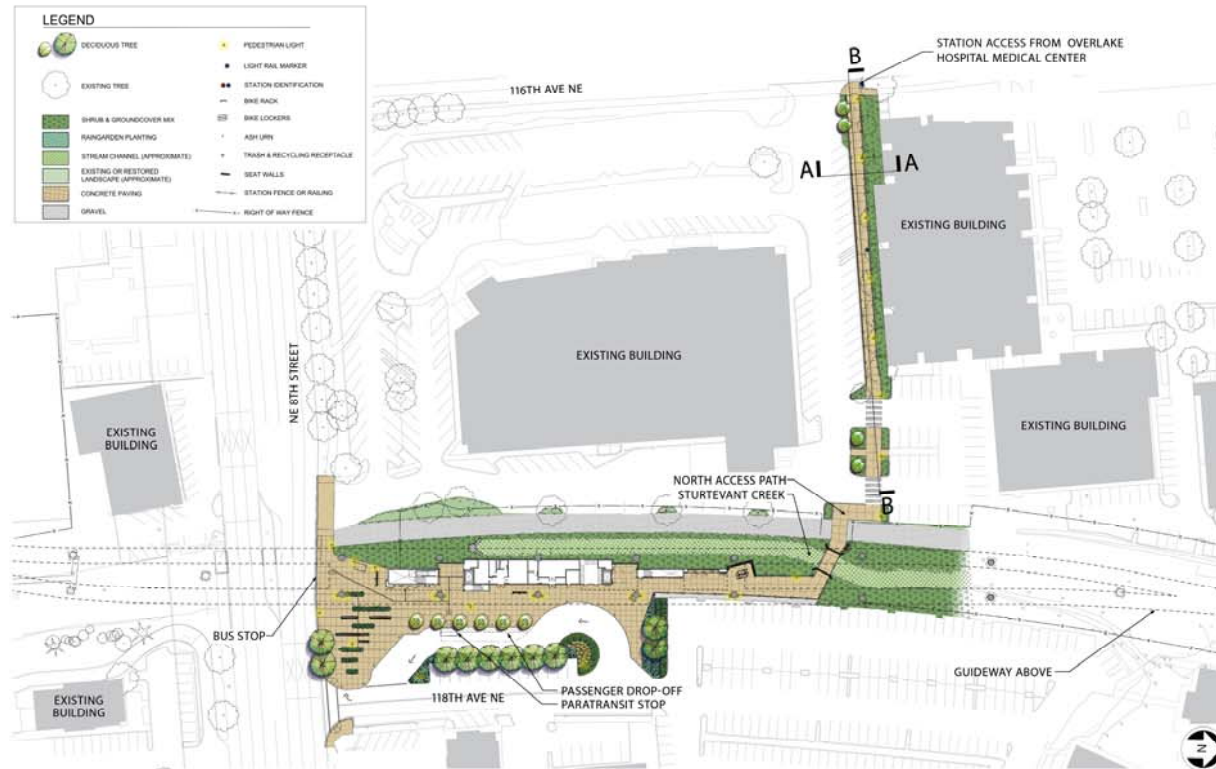
APPROACHING STATION FROM NORTH ACCESS PATH AT TICKET VENDING MACHINES



APPROACHING STATION FROM NORTH ACCESS PATH ENTERING NORTH STATION ENTRANCE

Approach to North Entrance

Hospital Station



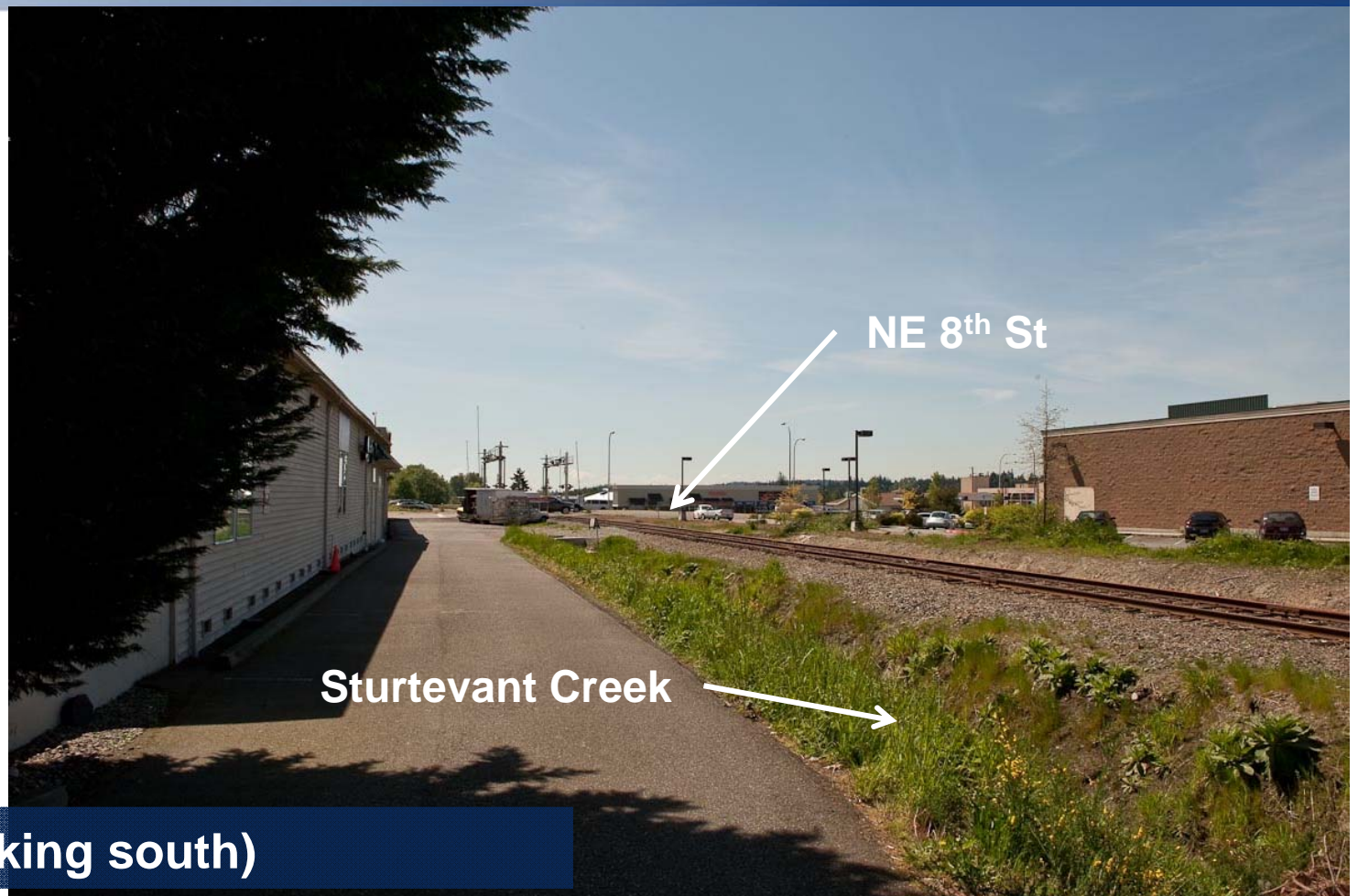
Site Plan

Wilburton Station



116th Ave NE & NE 10th St (looking northwest)

Wilburton Station



Station Site (looking south)

Wilburton Station



Whole Foods



Sturtevant Creek



Station Site (looking northwest)



Wilburton Station



Lake Bellevue
Carport



RR Corridor (looking south)

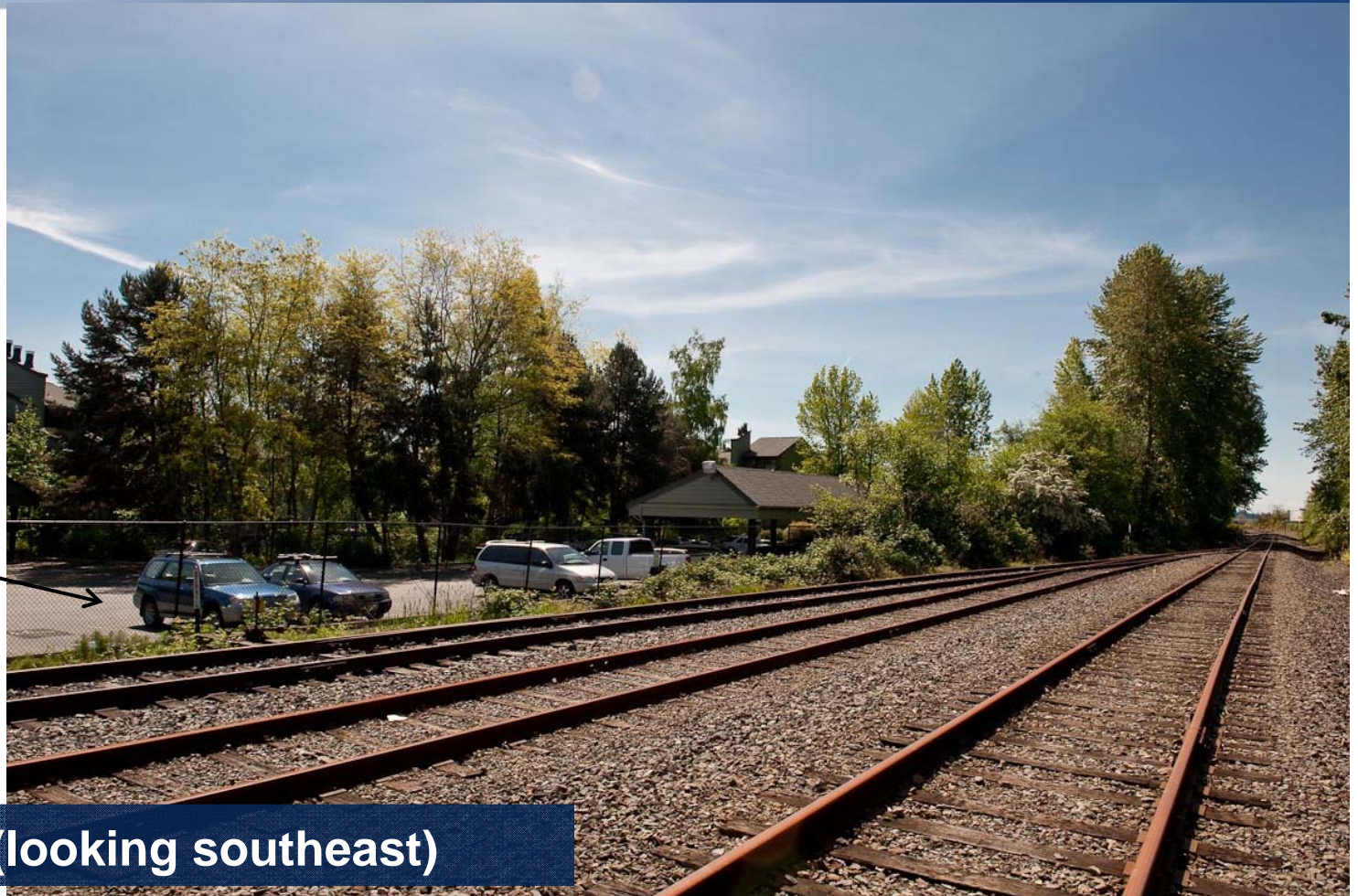


Wilburton Station



Lake Bellevue
Parking

Near NE 12th St (looking southeast)



Wilburton Station



Lake Bellevue
Parking

RR Corridor (looking north to NE 12th St)

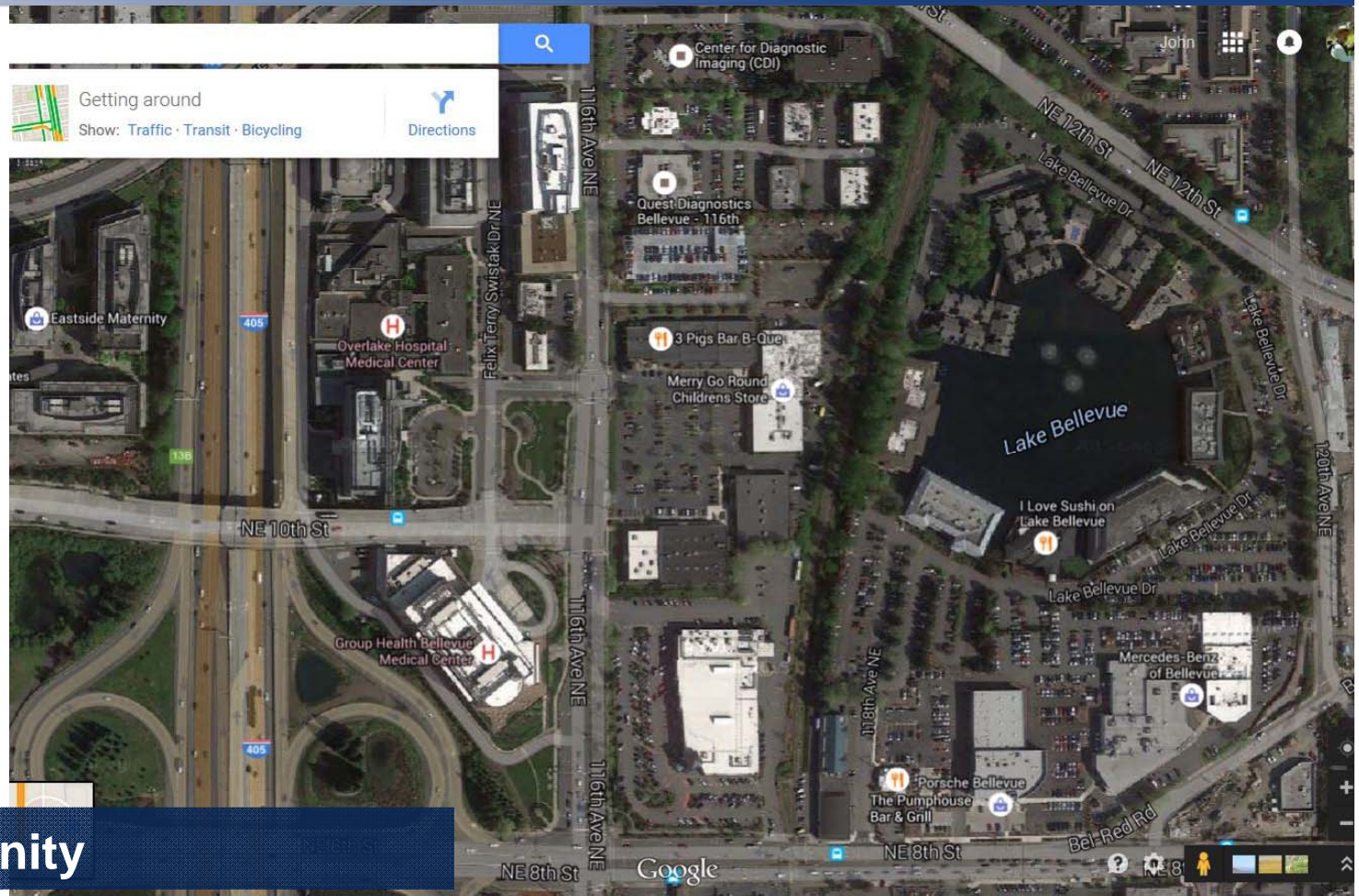


Wilburton Station

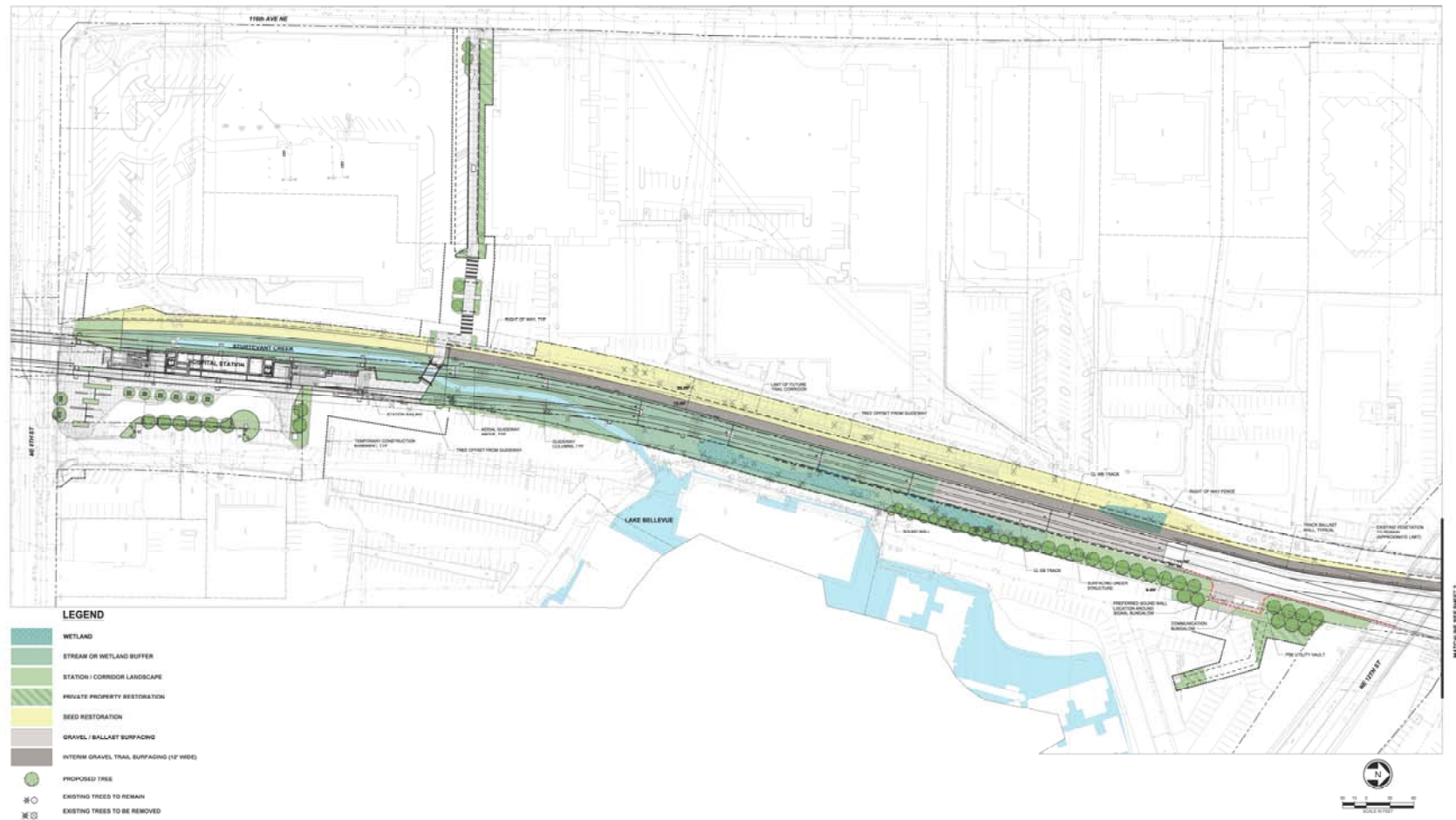


NE 12th St (looking north)

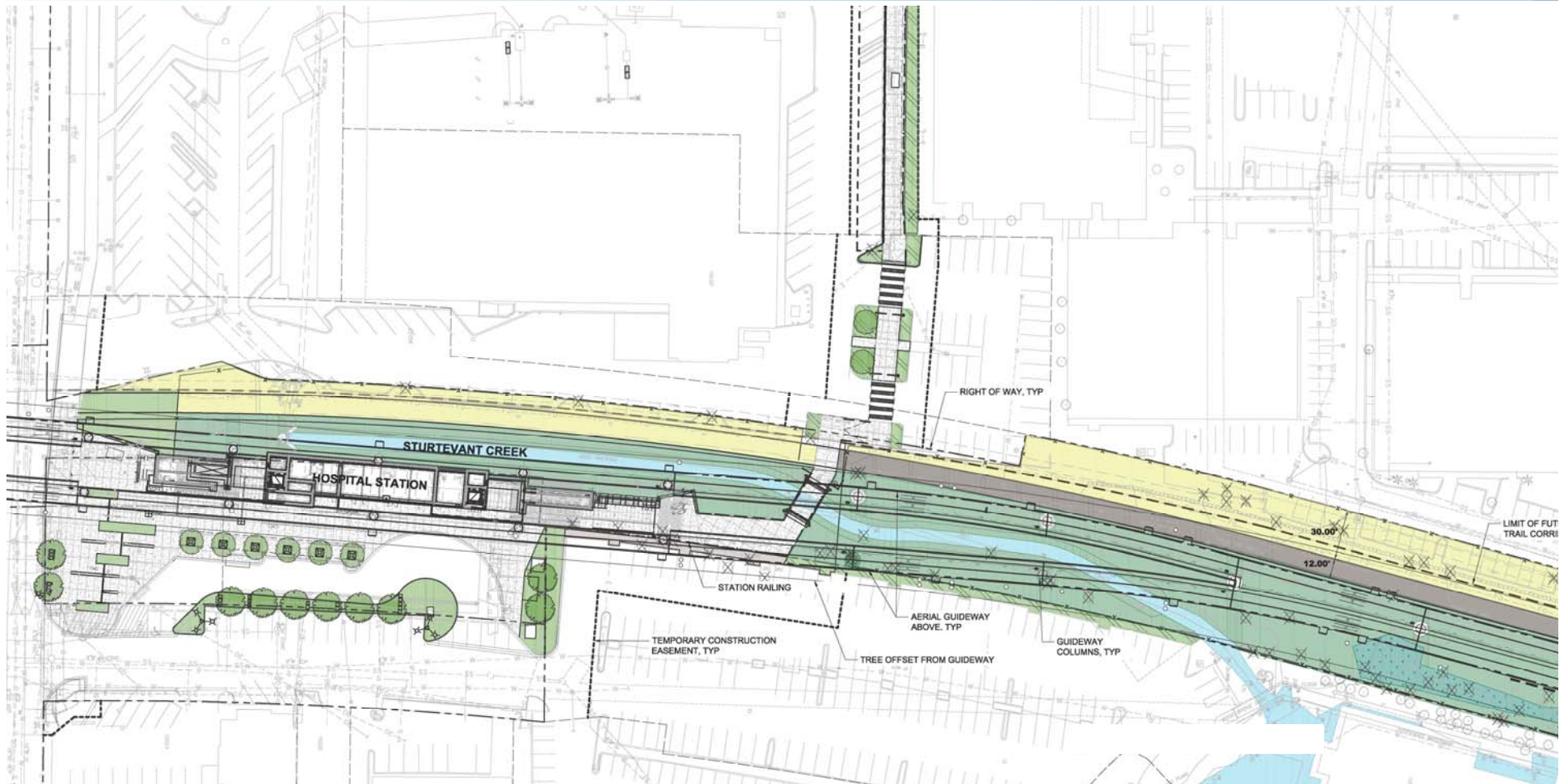
Wilburton Station



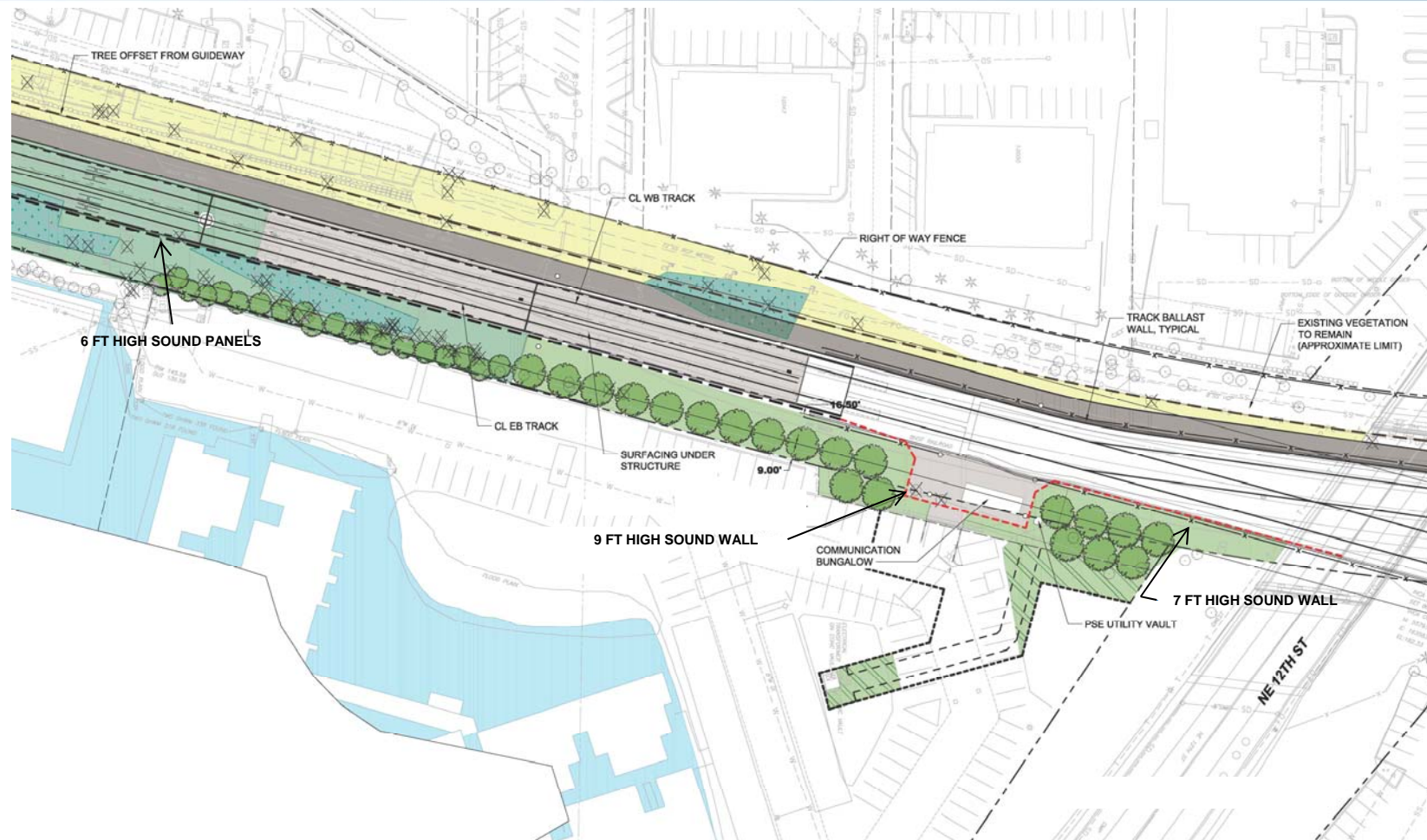
RR Corridor Vicinity



RR Corridor Landscape



RR Corridor Landscape

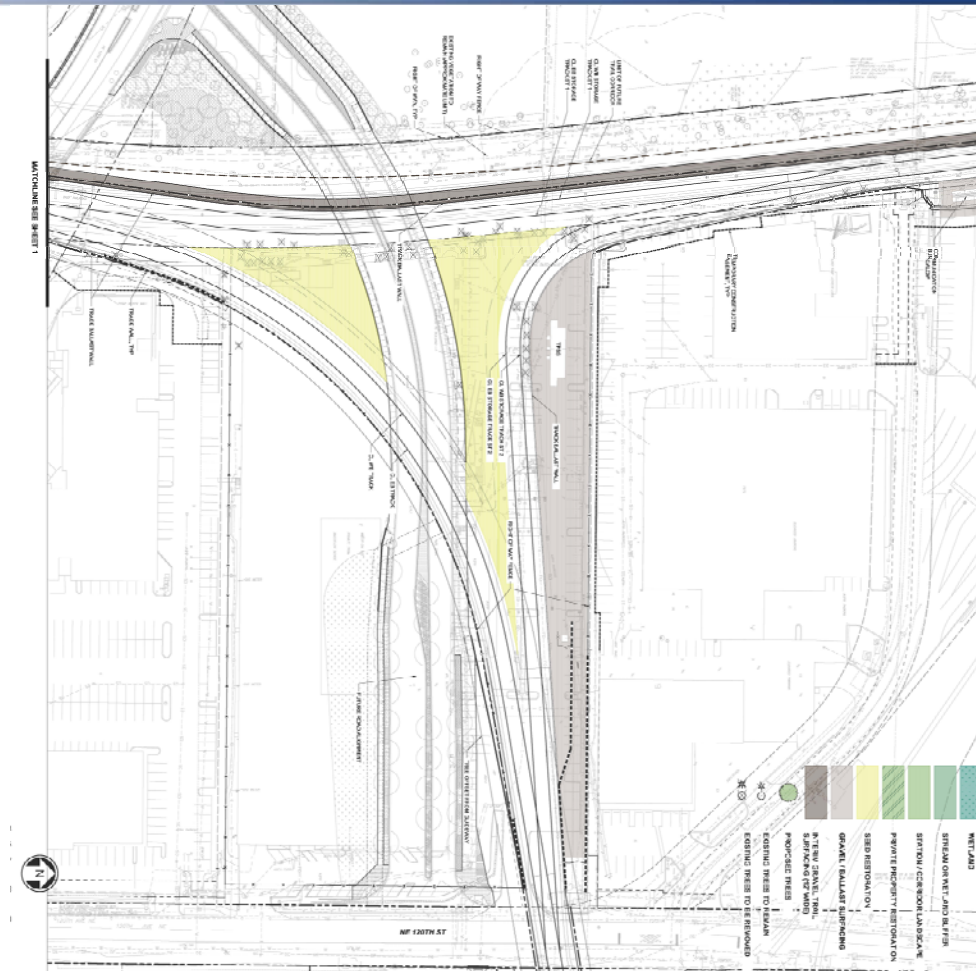


RR Corridor Landscape



Aerial View From Lake Bellevue

RR Corridor Landscape



Hospital Station

TREES



Ginkgo Tree
Ginkgo biloba
Tree proposed for Hospital Station street frontage and parking island, providing fall color.



Venus Dogwood
Cornus kousa 'mutabilis' 'Venus'
Tree proposed for eastern entrance to the Hospital Station along the vehicular drop-off zone.

SHRUBS & GROUNDCOVERS



Western Sword Fern
Polystichum munifolium
Fern proposed as an accent plant within planting mix proposed for sloped planting behind southwestern retaining wall.



Stella de Oro Daylily
Hemerocallis 'Stella de Oro'
Flowering perennial proposed as accent for the Hospital Station parking island.



Kelseyi Dogwood
Cornus latifolia 'Kelseyi'
Deciduous shrub proposed for drainage areas.



Kinnikinnick
Arctostaphylos uva-ursi
Evergreen groundcover proposed throughout the Hospital Station eastern planting areas.



Salal
Gaultheria shallon
Evergreen shrub proposed within planting mix proposed for sloped planting behind southwestern retaining wall.



Evergreen Huckleberry
Vaccinium ovatum
Evergreen shrub proposed within planting mix proposed for sloped planting behind southwestern retaining wall.



Dagger-Leaf Rush
Aristida ensifolia
Rush proposed for drainage areas.

Planting & Hardscape

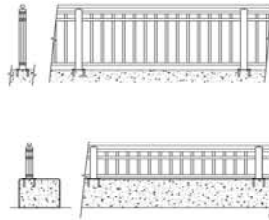
Hospital Station

GUARDRAILS & RAILINGS



Fabricated Metal Guards on Wall to match Station accessories

Guard with grapple railing positioned on top of low wall to protect and buffer pedestrians from parking lot adjacent to rail.



WALL SCREENING



Virginia Creeper
Parthenocarpus quinquefolia

Climbing and vigorous deciduous vine apt to grow over and up walls.



Mesh Wall Screen

Coated metal mesh panels support climbing vines desirable to cover walls.



Cabled Wall Screen

Cabled assembly in patterns determined by user, used to support climbing vines desirable to cover walls.

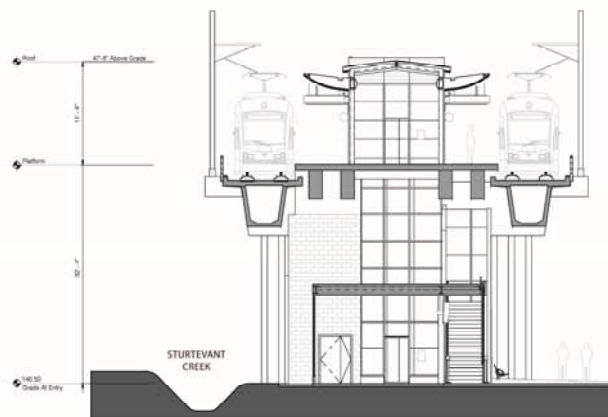
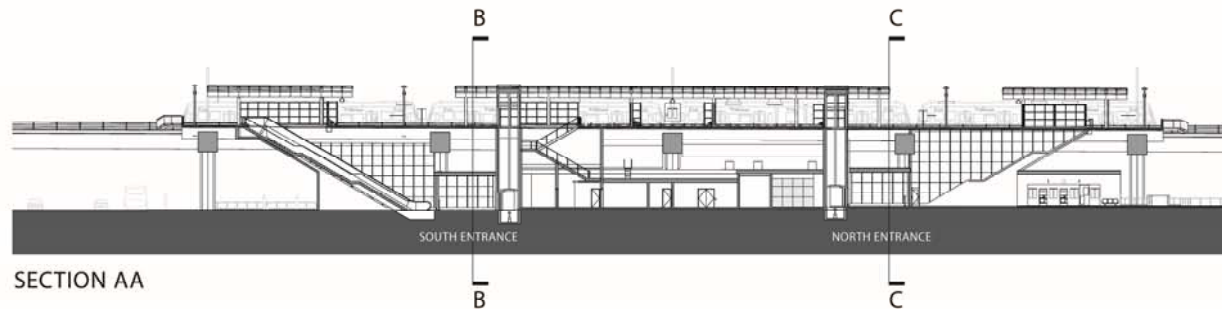
Planting and Hardscape



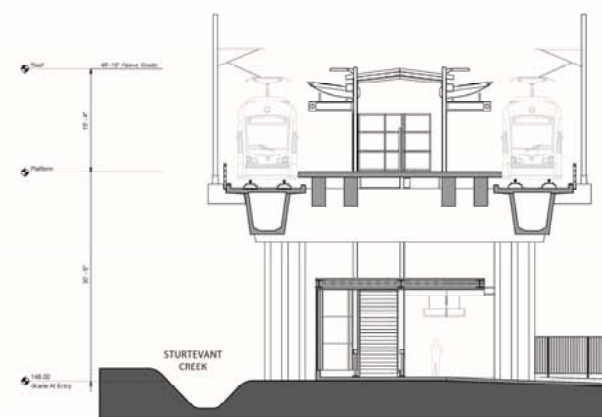
Wilburton Station



Hospital Station



SECTION BB - SOUTH ENTRANCE



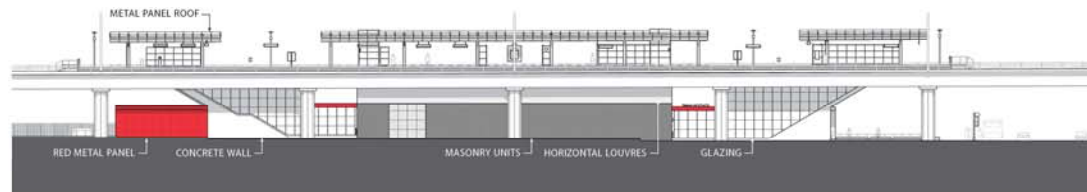
SECTION CC - NORTH ENTRANCE

Cross Sections

Hospital Station



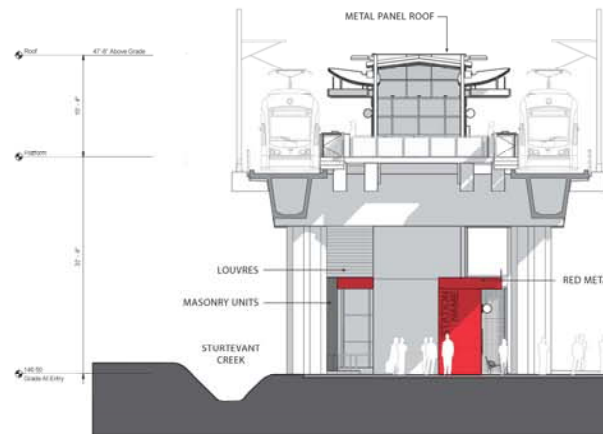
EAST ELEVATION



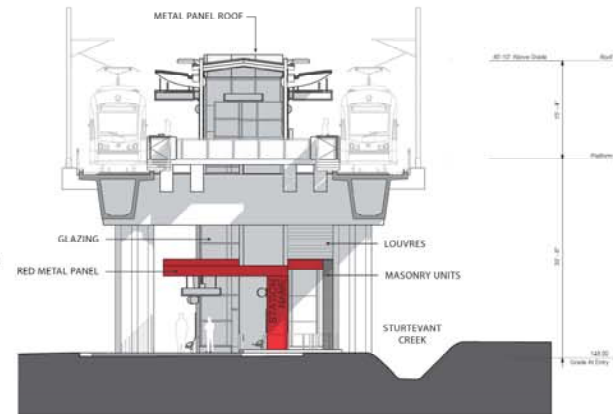
WEST ELEVATION

East & West Elevations

Hospital Station



SOUTH ELEVATION



NORTH ELEVATION

North & South Elevations