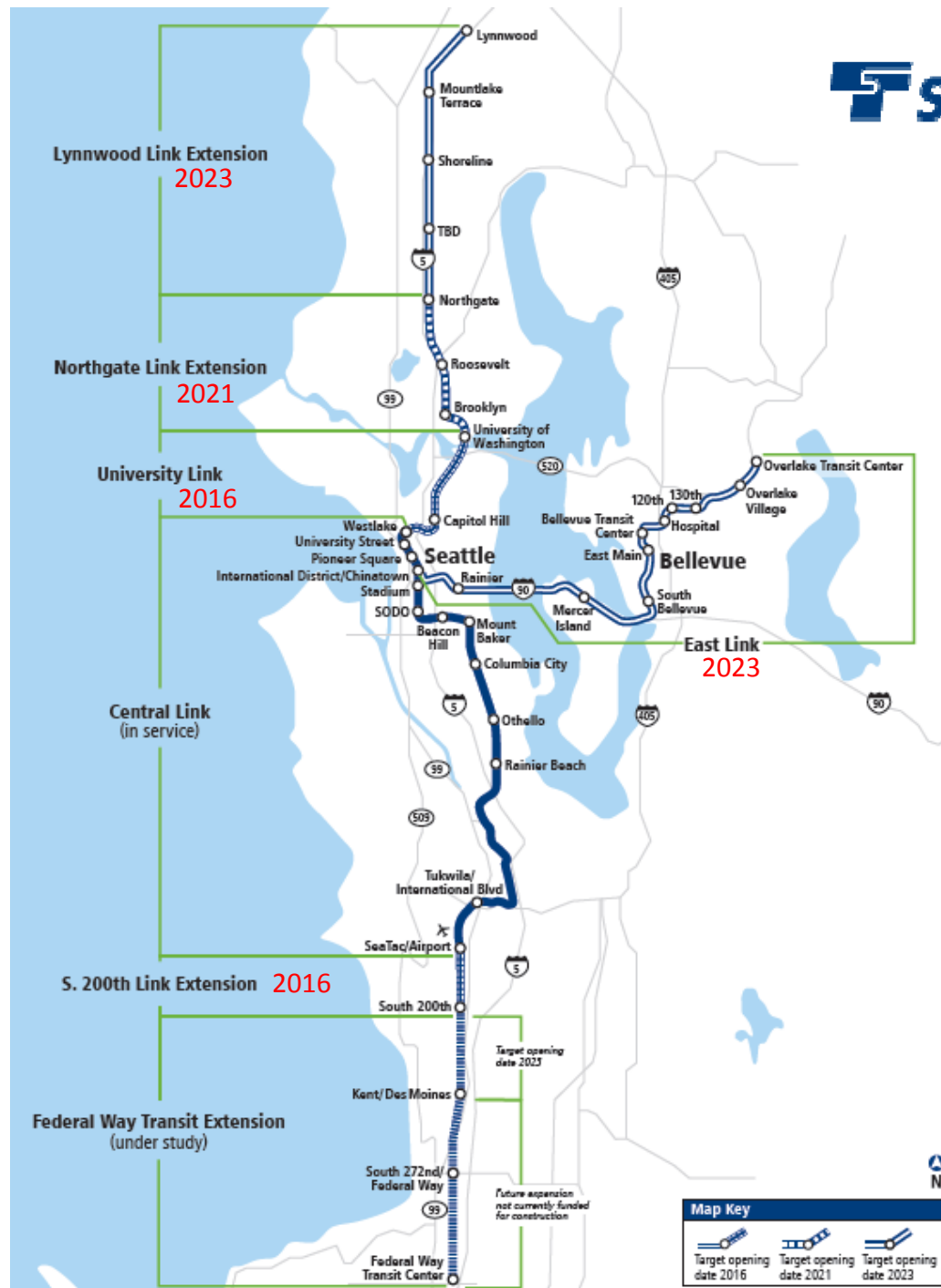
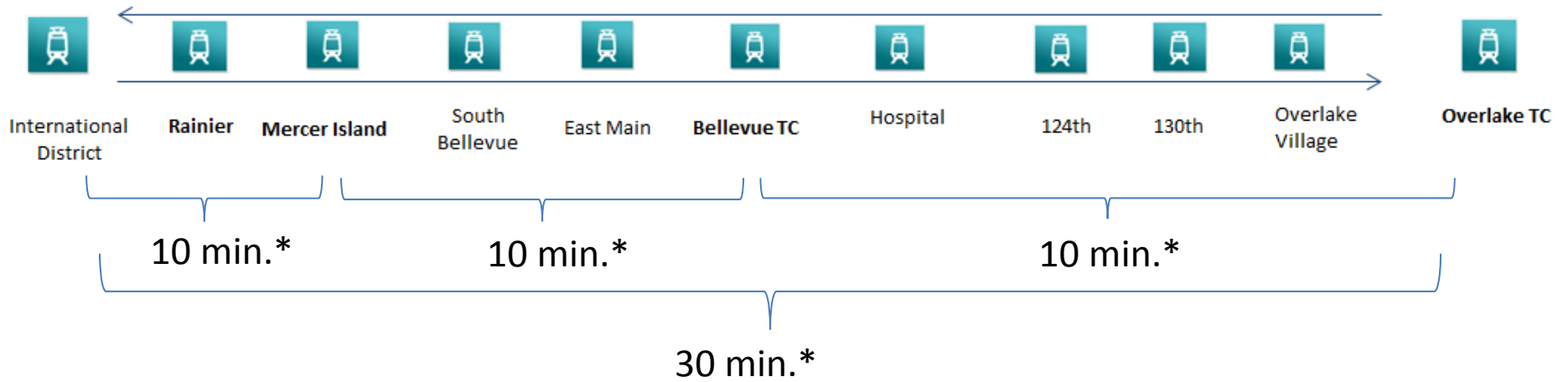


# East Link

**Operating Plan for Initiating Service on the East Side  
November 2014**



# East Link Run Times & Frequencies



5 am - 6 am	Every 15 minutes
<b>6 am - 08:30 am</b>	<b>Every 8 minutes</b>
08:30 am - 3 pm	Every 10 minutes
3 pm - 6:30 pm	Every 8 minutes
6:30 pm - 10 pm	Every 10 minutes
10 pm - 1 am	Every 15 minutes

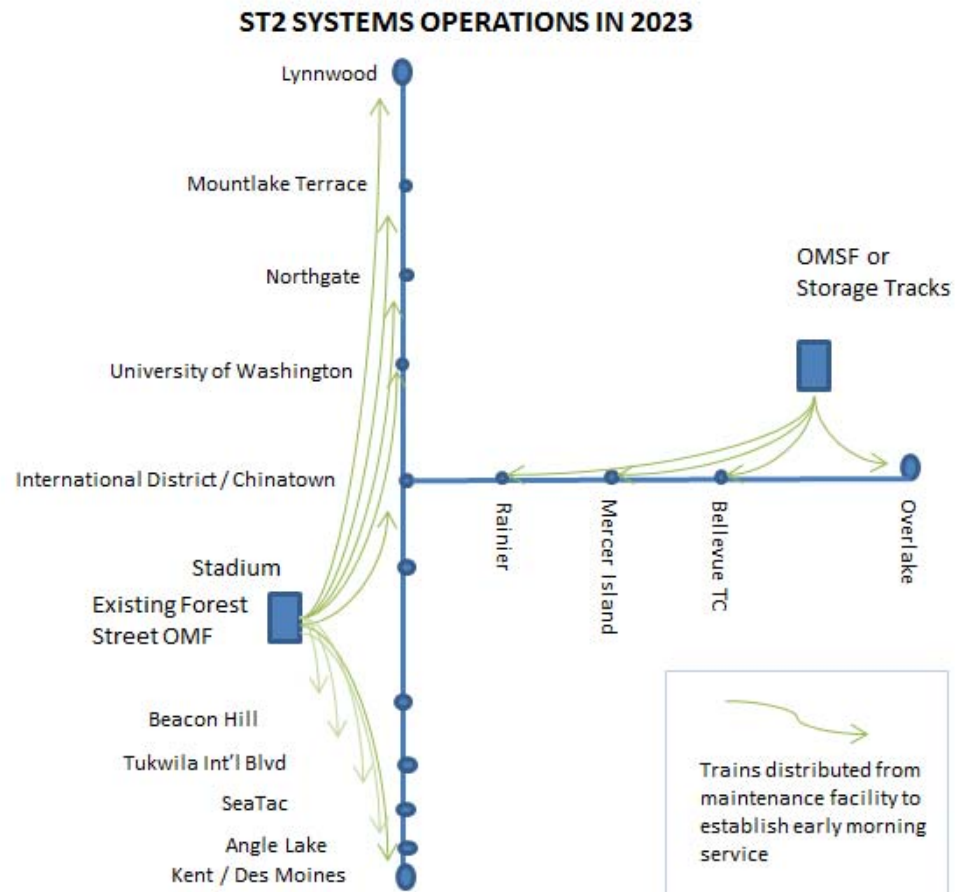
5 am - 8 am	Every 15 minutes
8 am - 10 pm	Every 10 minutes
10pm - 1 am	Every 15 minutes

6 am - 8 am	Every 15 minutes
8 am - 10 pm	Every 10 minutes
10pm - 12 am	Every 15 minutes

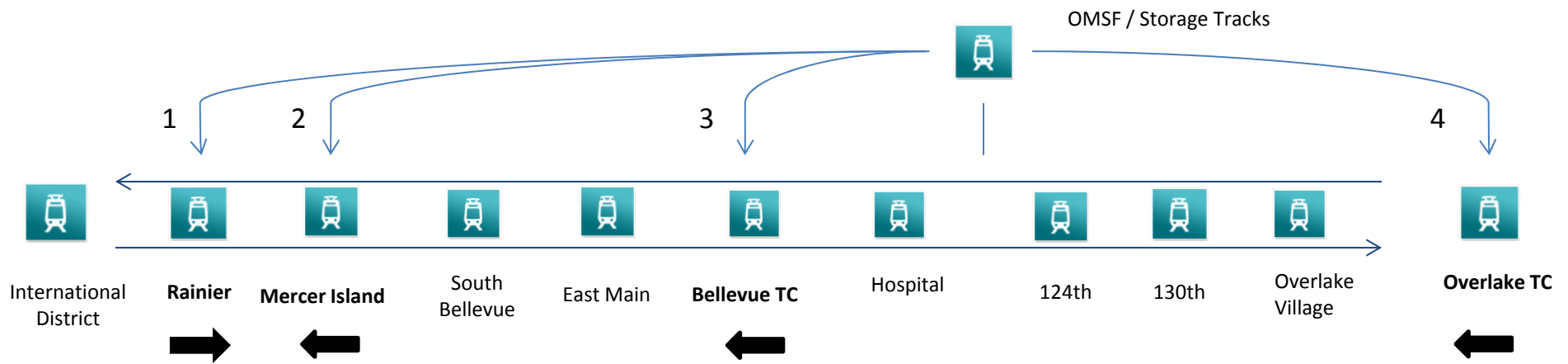
- \*Run Times are Approximate
- Highlighted: Peak hour for East Link Noise Analysis (Maximum 16 trains/hour in 10pm to 7am Noise Ordinance)

# Current Working Assumptions for System Operations

- For initial establishment of service, the OMSF / Storage Tracks will provide the light rail vehicles required to charge East Link exclusively
- Service Begins at about 5am
- Service Ends at about 1am
- No trains left online
  - LRV Inspection
  - Operator Orders / Supervisor Briefing
  - Vandalism Avoidance
  - Logistics of Operator Shuttling



# East Side Initial Charge



1st Trains Out (approx.)									
Train	From	Depart Time	OTC	Hospital	BTC	E Main	S Bell	MI	Rain
1	OMSF/Storage Tracks	4:29:00 AM		4:31:00 AM	4:34:00 AM	4:38:00 AM	4:42:00 AM	4:48:00 AM	5:07:00 AM
2	OMSF/Storage Tracks	4:42:00 AM		4:44:00 AM	4:46:00 AM	4:49:00 AM	4:52:00 AM	4:57:00 AM	
3	OMSF/Storage Tracks	4:47:00 AM		4:49:00 AM	4:51:00 AM				
4	OMSF/Storage Tracks	4:40:00 AM	4:50:00 AM	5:04:00 AM	5:06:00 AM	5:09:00 AM	5:12:00 AM	5:17:00 AM	5:22:00 AM

- Times are Approximate, based on current modeling
- 1<sup>st</sup> train operates at sweep speed (25MPH)
- Direction of movement



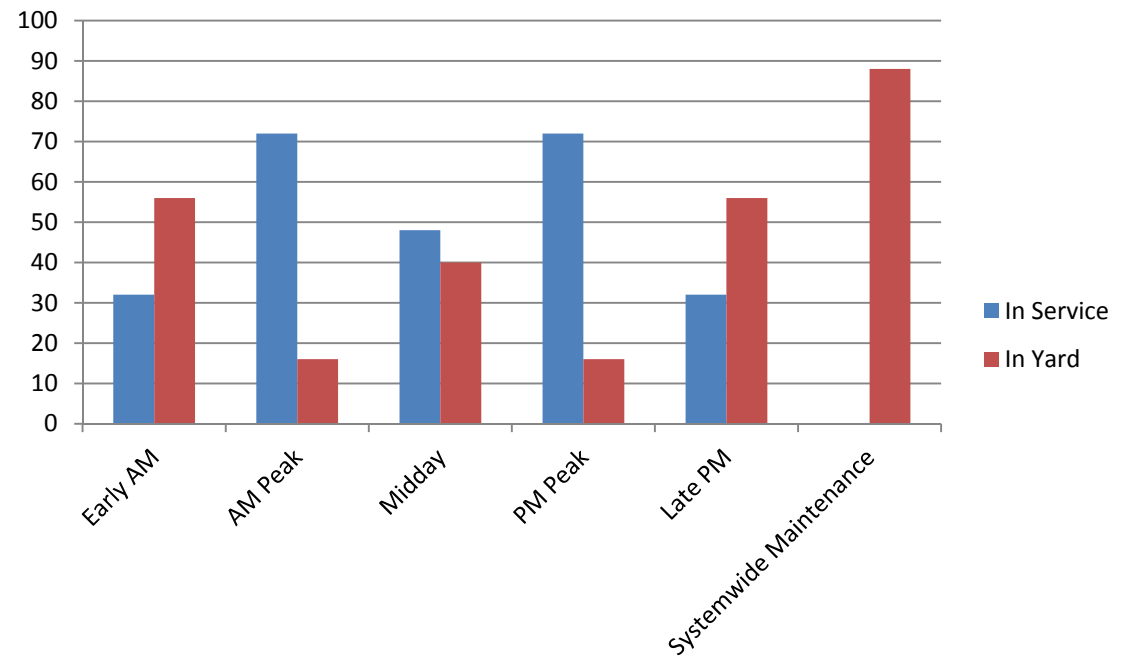
# Onlooker's Observations

Train Frequencies	Service Period Window	Trains Per Hour Both Directions (approx.)	Total Trains Running on East Side During Service Period Window (approx.)
<b>Early morning service</b> <i>Trains every 15 min.</i>	5:00 – 6:00 a.m.	8 Trains Hourly	4-6
<b>Morning peak service</b> <i>Trains every 8 min.</i>			
<b>Day off-peak service</b> <i>Trains every 10 min.</i>	8:30 a.m. – 3:00 p.m.	12 Trains Hourly	6-8
<b>Afternoon peak service</b> <i>Trains every 8 min.</i>	3:00 – 6:30 p.m.	15 Trains Hourly	8-10
<b>Evening off-peak service</b> <i>Trains every 10 min.</i>			
<b>Late night service</b> <i>Trains every 15 min.</i>	10:00 p.m. – 1:00 a.m.	8 Trains Hourly	4-6
<b>Train maintenance, preparing to establish early morning service</b> <i>System wide and Train maintenance period</i>			
	1:30 – 4:30 a.m.		

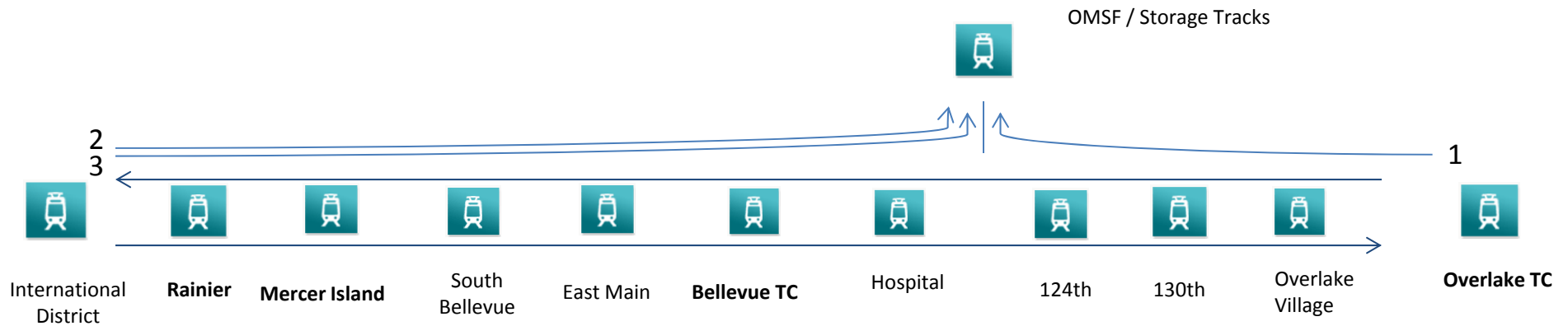
# Yard Levels Throughout the Day

**OMSF or Storage Tracks Bellevue**

	In Service	In Yard
Early	32 (8 trains)	56 (14 trains)
AM Peak	72 (18 trains)	16 (4 trains)
Midday	48 (12 trains)	40 (10 trains)
PM Peak	72 (18 trains)	16 (4 trains)
Night	48 (12 trains)	40 (10 trains)
Late	32 (8 trains)	56 (14 trains)
Non-Revenue	0	88 (22 trains)
Total Capacity	96 (24 trains)	12 trks / 8 cars



# East Side Closing



Returning Trains (Times approx.)									
Train	From	Rain	MI	S Bell	E Main	BTC	Hospital	Storage	OTC
1	Downtown	12:31:00 AM	12:37:00 AM	12:43:00 AM	12:47:00 AM	12:51:00 AM	12:53:00 AM	1:15:00 AM	1:05:00 AM
2	Downtown	12:51:00 AM	12:57:00 AM	1:03:00 AM	1:07:00 AM	1:11:00 AM	1:13:00 AM	1:15:00 AM	
3	Downtown	1:06:00 AM	1:12:00 AM	1:18:00 AM	1:22:00 AM	1:26:00 AM	1:28:00 AM	1:30:00 AM	



# Questions?

