

LIGHT RAIL PERMITTING ADVISORY COMMITTEE



COMMITTEE MEETING

October 15, 2014 | 3:00PM -5:00PM | ROOM 1E-113



Agenda

- **3:00**
 - Call to Order, Approval of Agenda, Approval of September 17th Meeting Minutes – Co-Chairs Van Houten and Mathews
 - Public Comment
- **3:20**
 - South Bellevue Art Update– Barbara Luecke Sound Transit
- **4:20** Tree Preservation and Context Sensitive Design – Justin Lacson Sound Transit
- **4:50**
 - Public Comment
- **5:00**
 - Adjourn



Migratory Bird Mitigation

- Sound Transit Artists Presentation



East Link Extension

South Bellevue Tree Preservation and Mitigation
Light Rail Permitting Citizen Advisory Committee
October 15, 2014

South Bellevue Tree Preservation & Mitigation

Overview

- City of Bellevue Tree Mitigation Criteria
- Tree Survey Methodology
- Tree Preservation, Removal and Replanting

Slide 5

KS3

Jason had the following suggestions:

- removing Permit from the title
- Adding DMP as a bullet

Katy Saunders, 10/14/2014

City of Bellevue Mitigation Criteria

- Three Different Regulations Apply
 - Light Rail Overlay
 - Critical Areas
 - General Development Requirements
- City of Bellevue Best Management Practices (BMPs) for tree preservation
- In Critical Areas
 - Three new conifers for each coniferous tree removed
 - One new deciduous tree for each deciduous tree removed
- In Non-Critical Areas
 - Tree replacement based on context setting of site

Slide 6

KS4

I might revise the last bullet to the following:

"Tree replacement based on the City of Bellevue standards for context sensitive design."

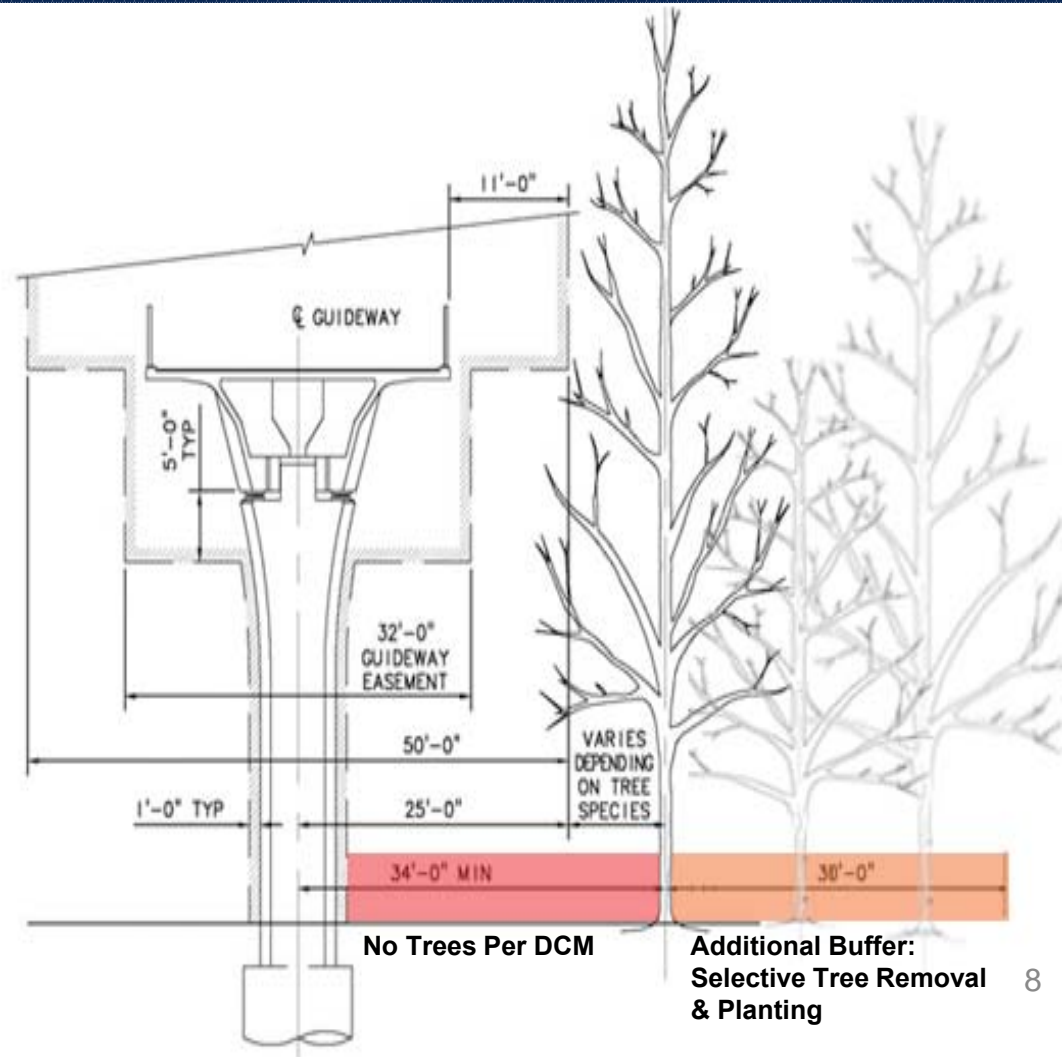
Katy Saunders, 10/9/2014

Methodology & Removal Overview

- Tree Assessment
 - Tree location survey – all trees 4 in diameter breast height (dbh) and larger
 - Tree identification classification
 - Species
 - Category
 - Significant
 - Health
- Tree Removal Overview
 - Trees within the Project foot print
 - Safe Operations & Maintenance Area
 - 34' from centerline of guideway, per ST's Design Criteria Manual
 - Additional 30' buffer zone

Safe Operations and Maintenance Area

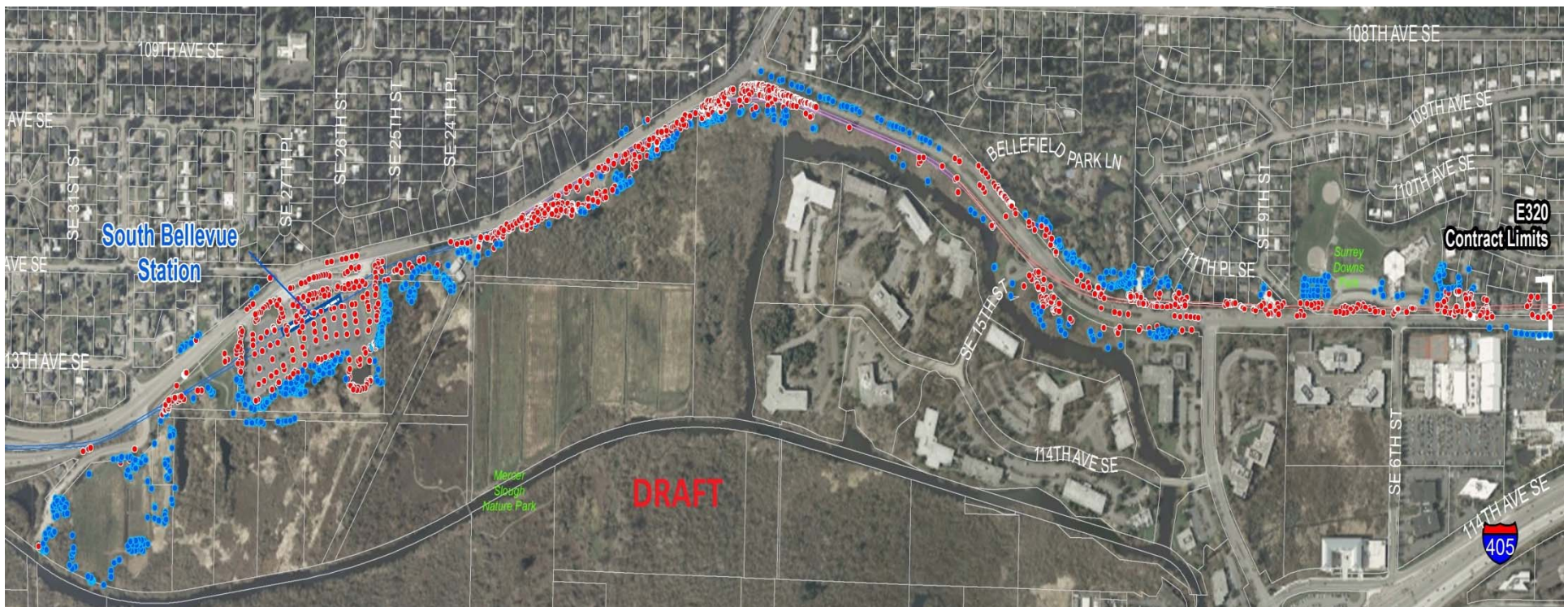
- No trees/stumps within 34 ft of the guideway centerline
- Scrub-shrub & groundcover planting allowed
- Additional Buffer: 30ft for selective planting and removal
- Prevent mature tree canopy from blowing onto the guideway



Tree Preservation

- Planning Process
 - Early attention to minimizing the Project's impact to Critical Areas resulted in tree retention where feasible
 - Review of specific sites through the EIS process
- Final Design Phases
 - On-going review by the design team to assess trees that can be retained, based on the construction limits of the Project.

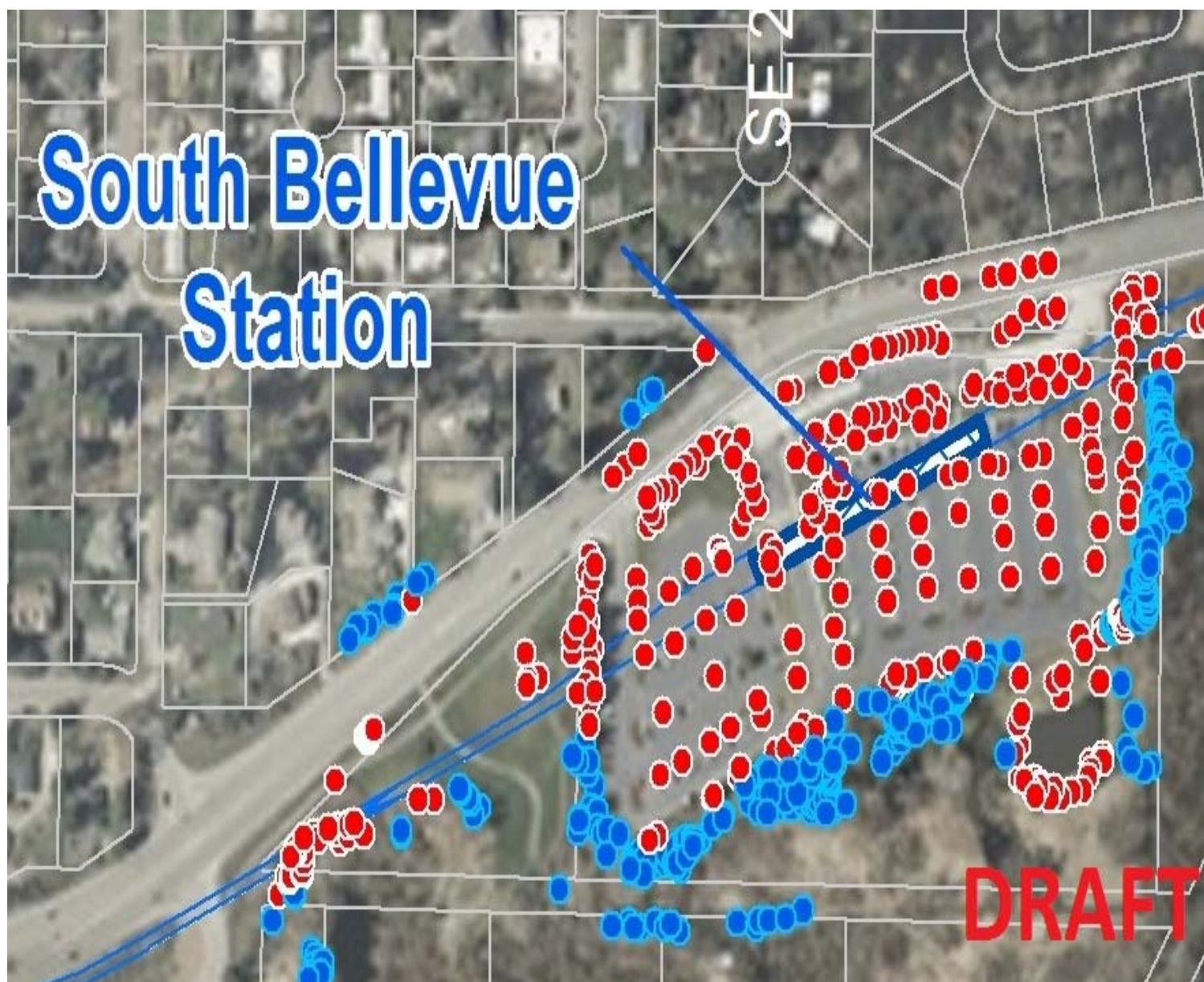
Tree Preservation & Removal Overview

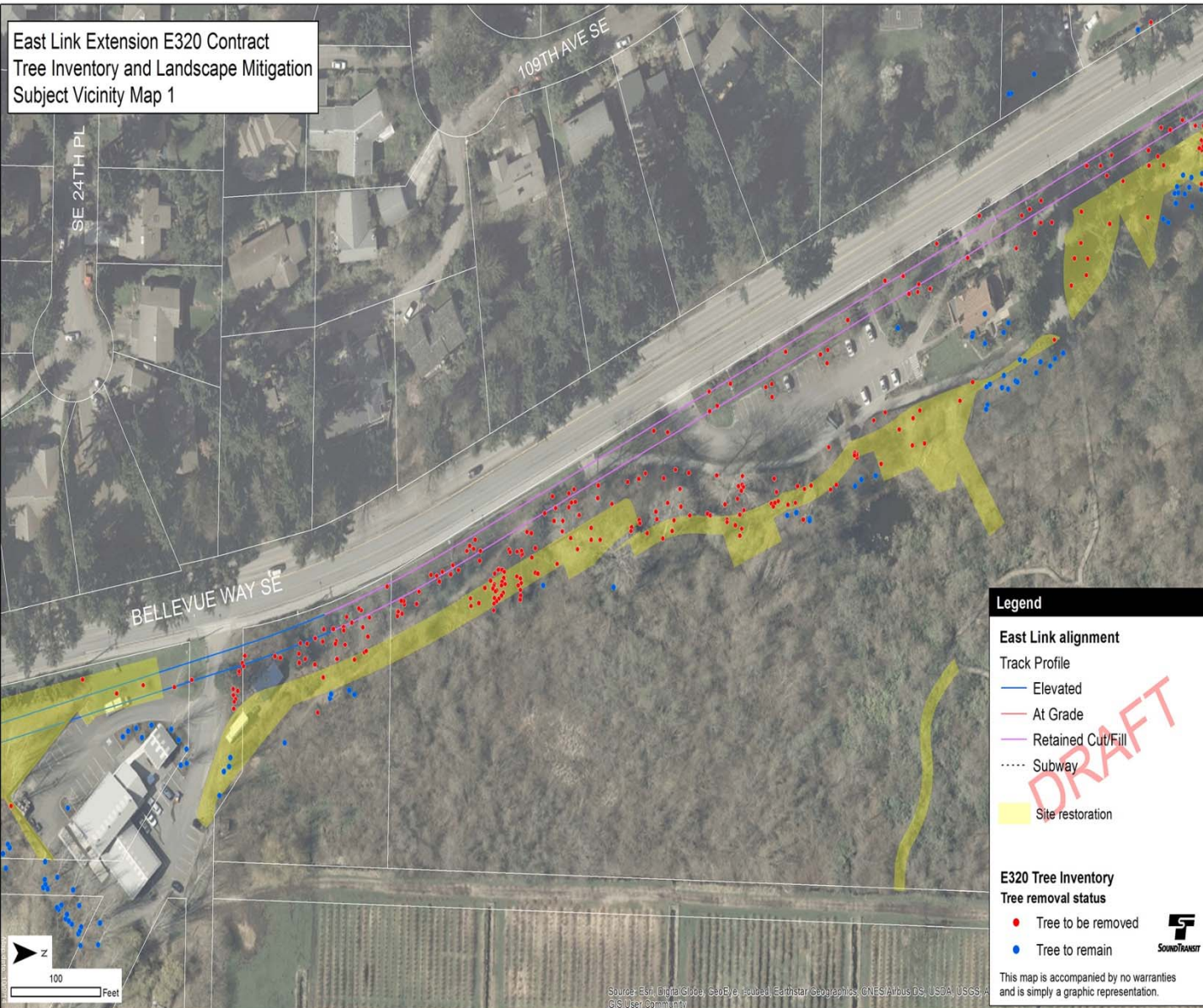


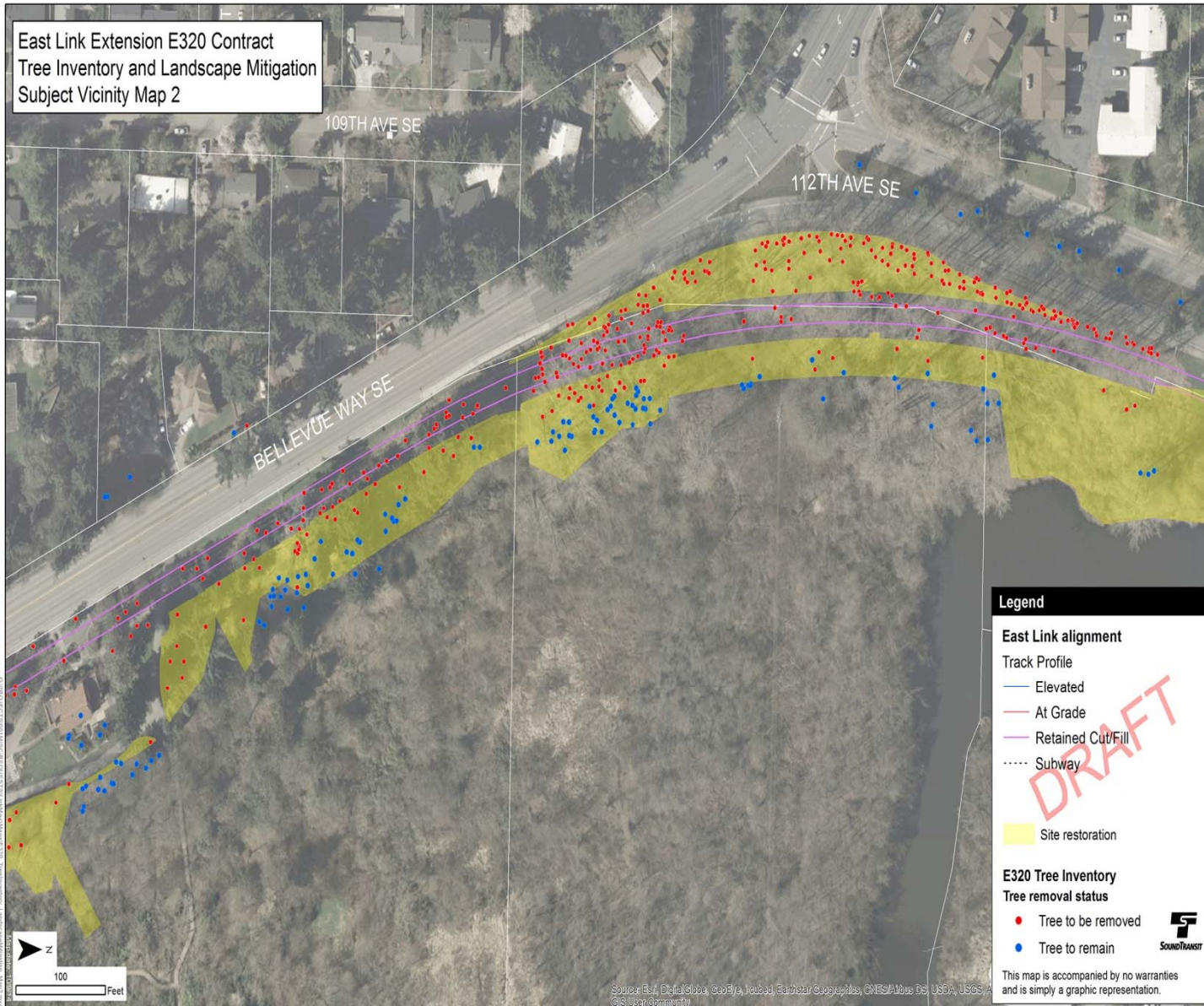
Tree Survey, Removal & Replanting- Summary

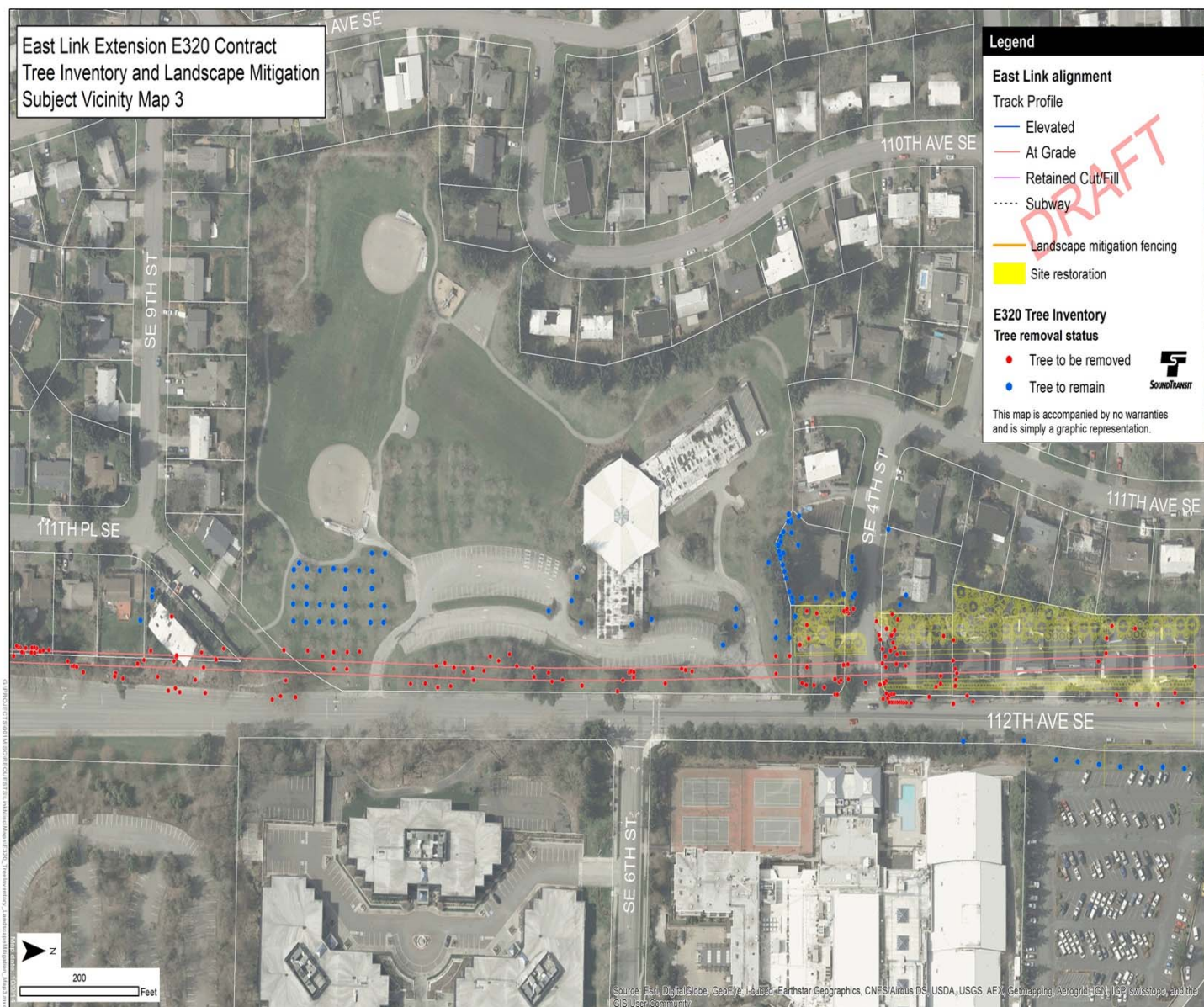
E320 Design Package Tree Removal	
Total Trees Inventoried (≥4"DBH)	2,196
Total Trees Removed	1,279

E320 Design Package Tree Replacement	Corridor and Station Plantings	Mitigation/Restoration Area Plantings	
		Coniferous	Deciduous
Proposed Trees to be Planted	595	722	8,262
Total Trees to be Planted	9,579		



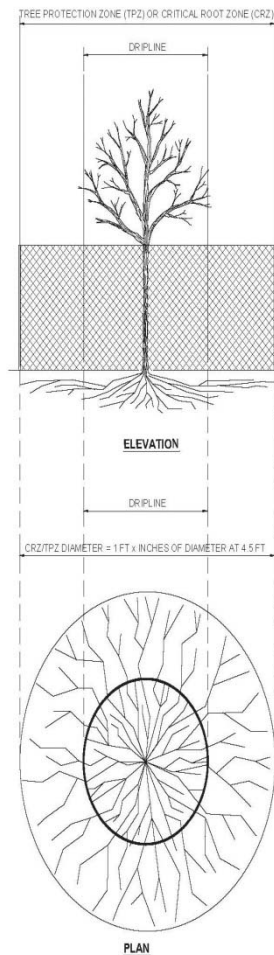






Tree Protection

Tree Protection Fencing



LANDSCAPE PROTECTION FENCING 1
SCALE: NTS

- During Design
 - On-going tree preservation coordination by the Design Team
 - Tree Preservation guidelines (BMP T101) cited in specifications & fencing indicated on plans
- During Construction...

Tree Protection



Tree Specifications

- Trees within Station / Corridor Landscapes
 - Size Range: 1½" – 3" caliper / 7'-12' tall (Proposed)
 - Incorporates additional native species when close to Mercer Slough
- Trees within Environmental Mitigation Landscapes
 - Size Range: 2-gal. / ~1.5'-3' tall (Proposed)
 - Northwest native plants

Station Planting Areas – South Bellevue Trees

TREES - EVERGREEN



Shore Pine

Pinus contorta var. *contorta*

Screening evergreen tree proposed for around the station perimeter.



Western Hemlock

Tsuga hereophylla

Screening evergreen tree proposed for the station perimeter.



Western Red Cedar

Thuja plicata

Screening evergreen tree proposed for around the station perimeter.



Mountain Hemlock

Tsuga mertensiana

Evergreen tree proposed for screening the station perimeter and the west side of the parking garage.



TREES - DECIDUOUS



Pyramidal European Hornbeam

Carpinus betulus 'Fastigiata'

Proposed street tree for along Bellevue Way SE in front of the station.



Vine Maple

Acer circinatum

Small, native, understory tree proposed for around the parking garage. photo by: Ed Book



Maidenhair Tree

Ginkgo biloba 'fastigiata'

Deciduous tree proposed for along entryways to the station.



Jade Butterfly Ginkgo

Ginkgo biloba 'Jade Butterfly'

Small, multi-stem, deciduous tree proposed for under the guideway and around the station plazas.

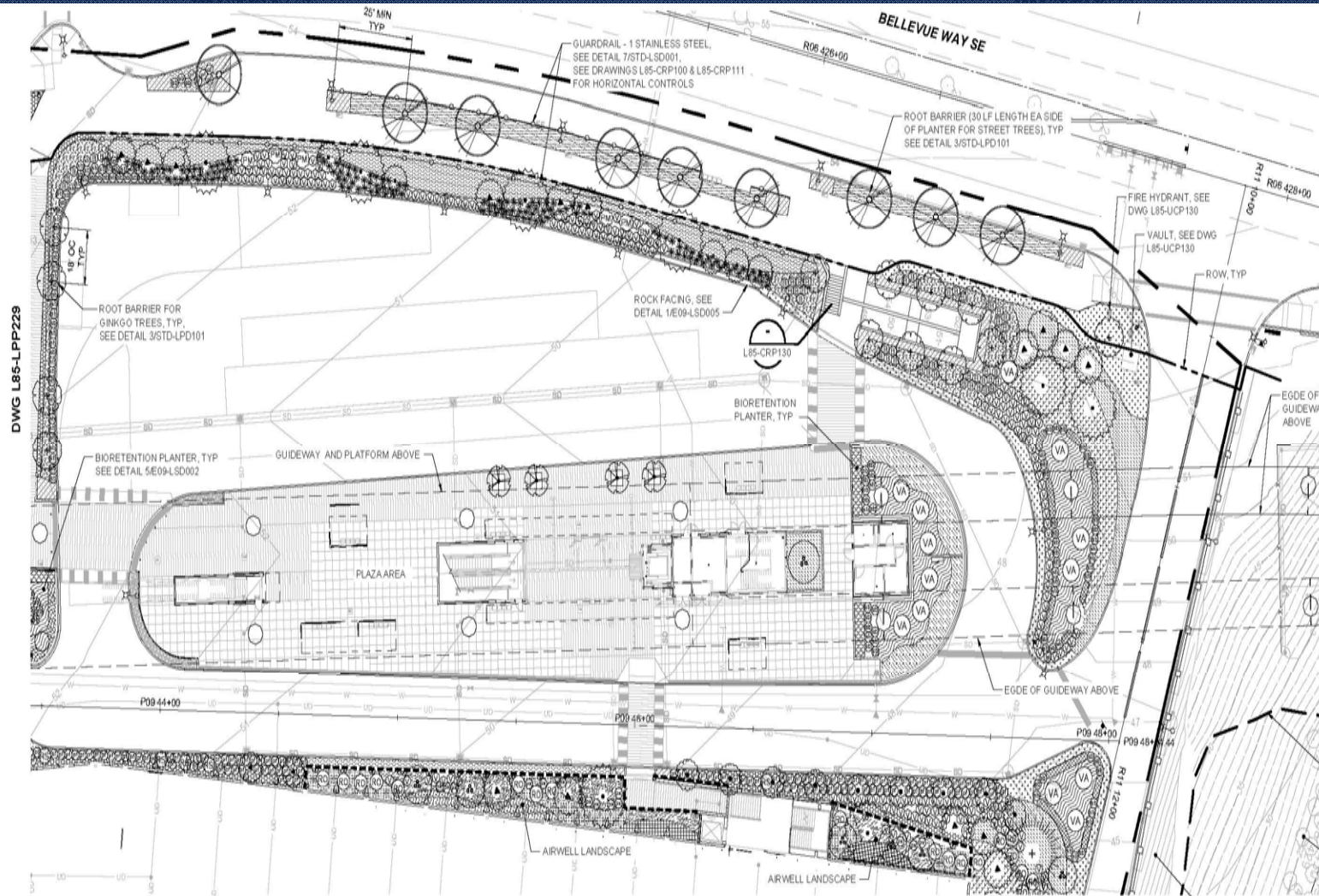


Station Planting Areas – South Bellevue



FEB. 2014

Station Planting Areas – South Bellevue









Next Meeting

October 29

Upcoming CAC Review Topics

- South Bellevue Noise Mitigation
- Tree Preservation and Mitigation
- Landscape Development
- Sound Transit Revised Renderings
- South Bellevue Station Elements
- South Bellevue Ancillary Structures

**South Bellevue Open House and CAC Meeting
November 6th**