

Agenda: BTC/Hospital Station Area

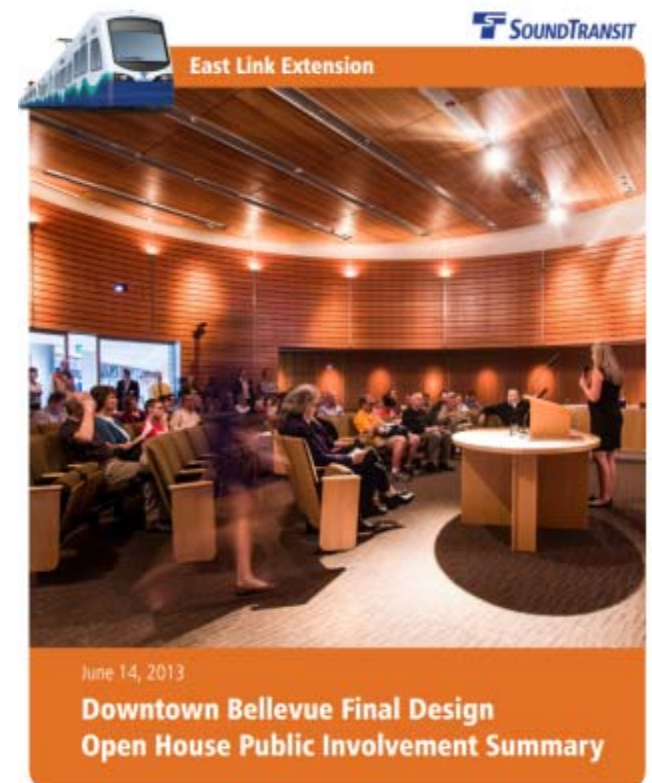
- Animation
- Public Outreach
- Station Design Elements
- Questions



What we've heard

Bellevue Transit Center Station

- Canopy coverage/weather protection
- Additional station entrance on the east side
- Convenient connection to Bellevue Transit Center
- Tunnel construction impacts to downtown residents and businesses



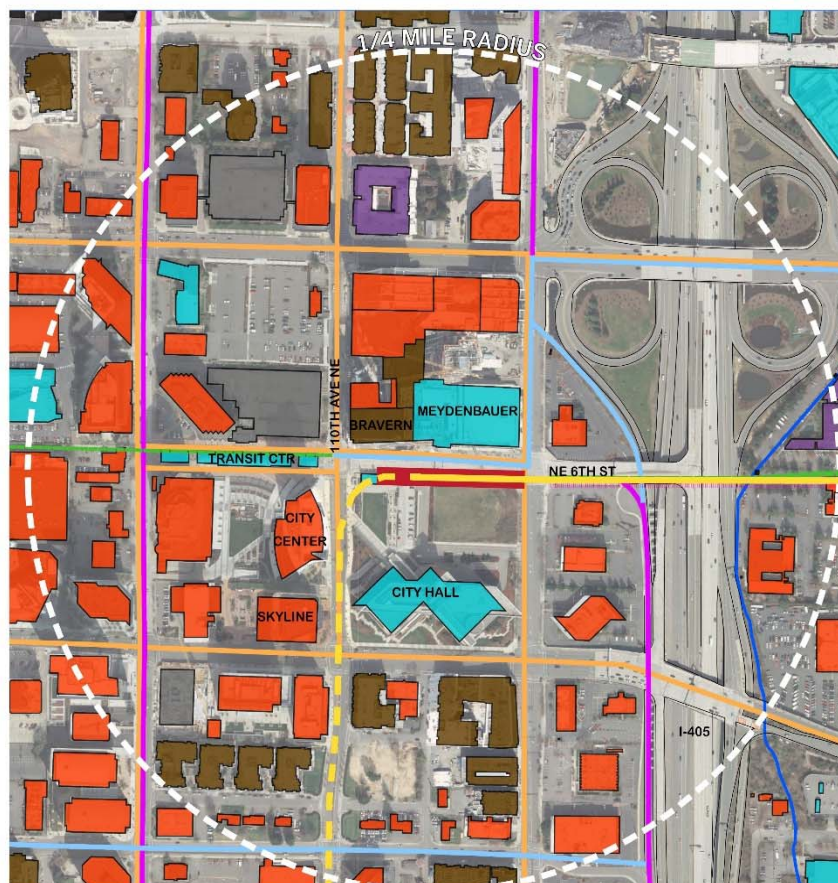
What we've heard

Hospital Station

- Safe and convenient access to medical centers
- Transit connections
- Compatibility with Lake Bellevue residential and commercial communities



Bellevue Transit Center



LEGEND

- BUS ROUTE
- BICYCLE ROUTE
- BICYCLE LANE
- - - OFF STREET PATH
- LIGHT RAIL TRACKS
- ▬ STATION
- ▬ PATRON CATCHMENT AREA

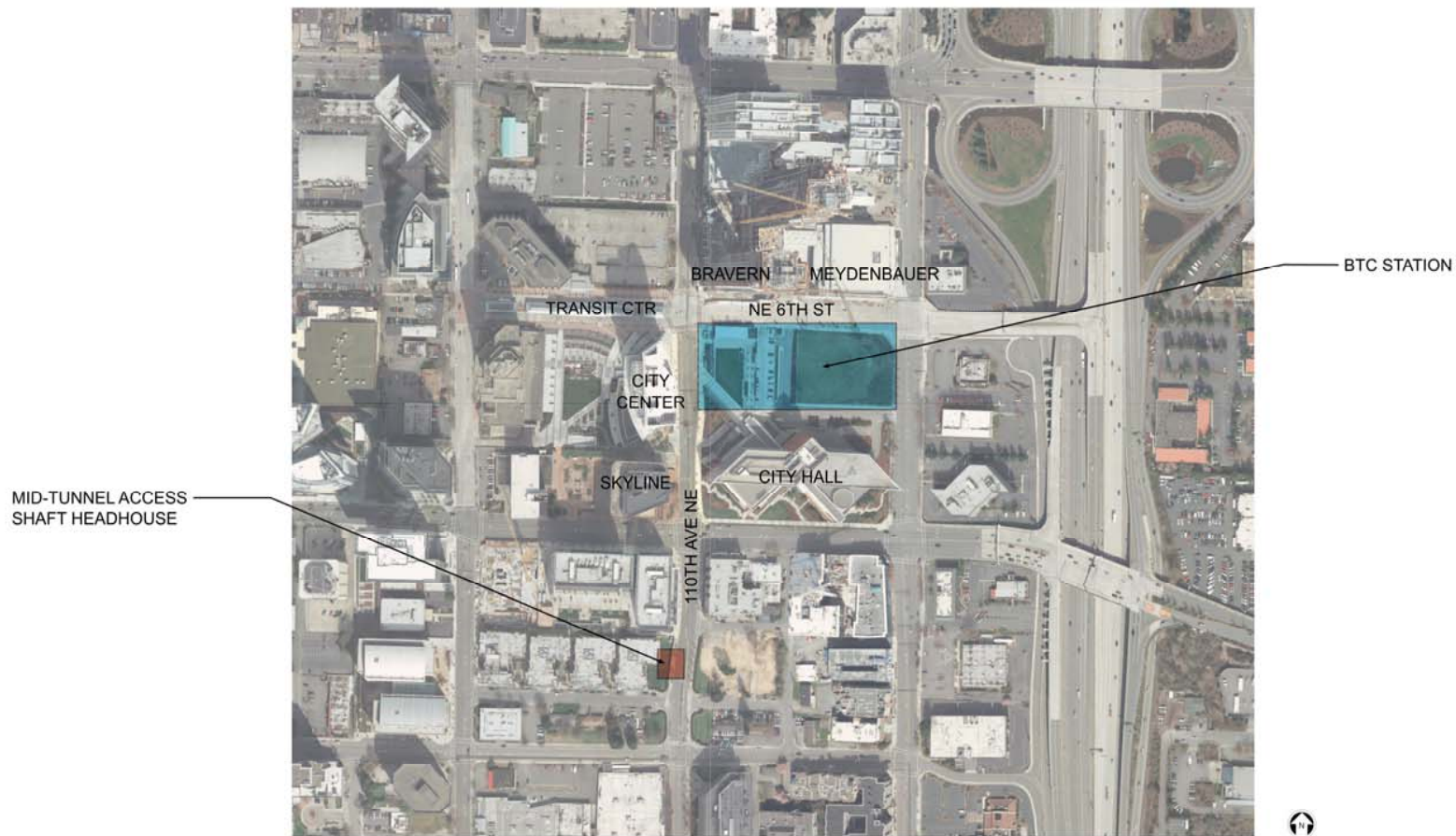
CITY OF BELLEVUE - 2009 PEDESTRIAN & BICYCLE TRANSPORTATION PLAN

- COMMERCIAL
- CIVIC / INSTITUTIONAL
- MULTI-FAMILY RESIDENTIAL
- HOTEL
- PARKING STRUCTURE



Neighborhood Context Plan

Mid-Tunnel Access Shaft Headhouse



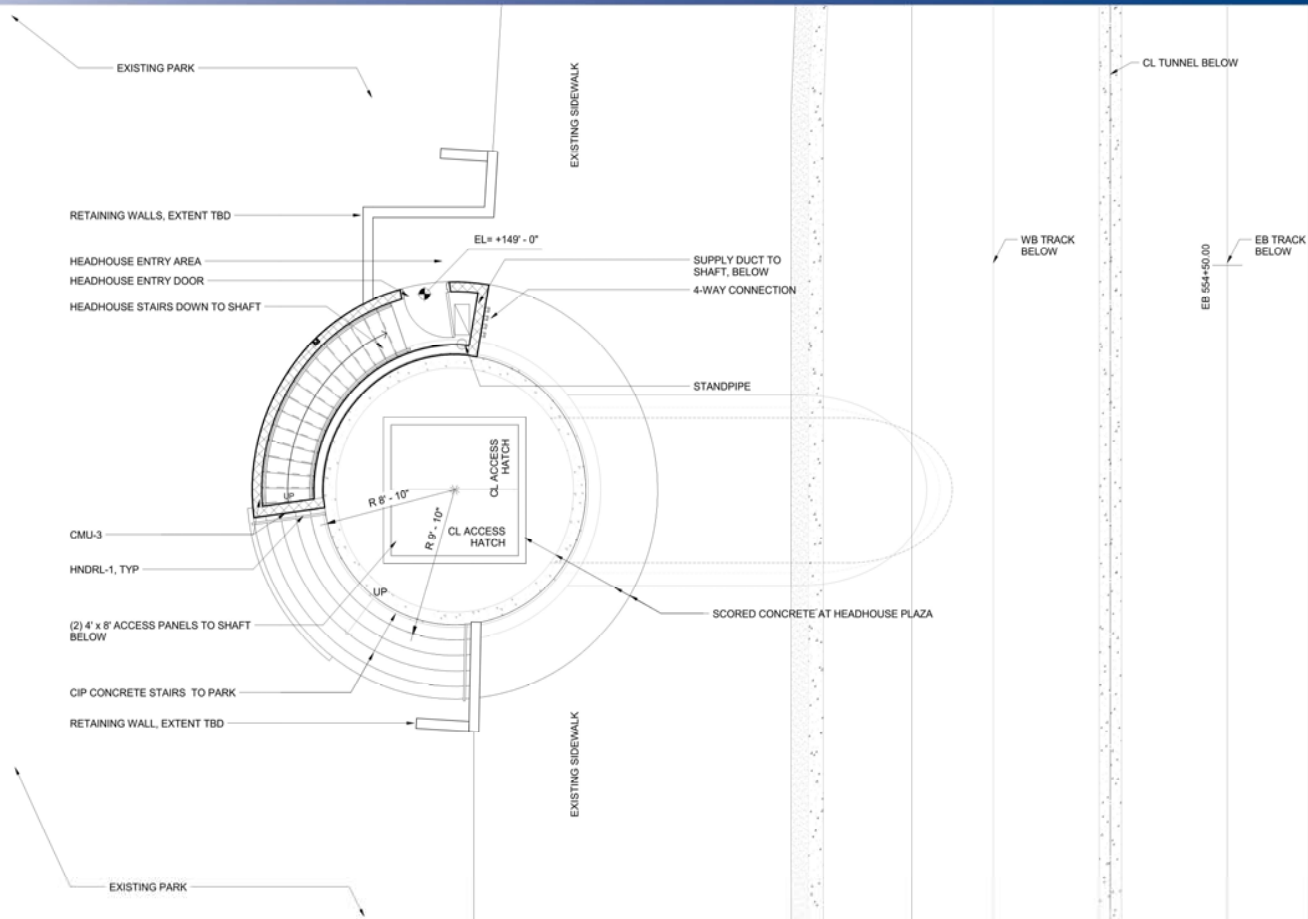
Neighborhood Context Plan

Mid-Tunnel Access Shaft Headhouse



View From NE 2nd Place

Mid-Tunnel Access Shaft Headhouse



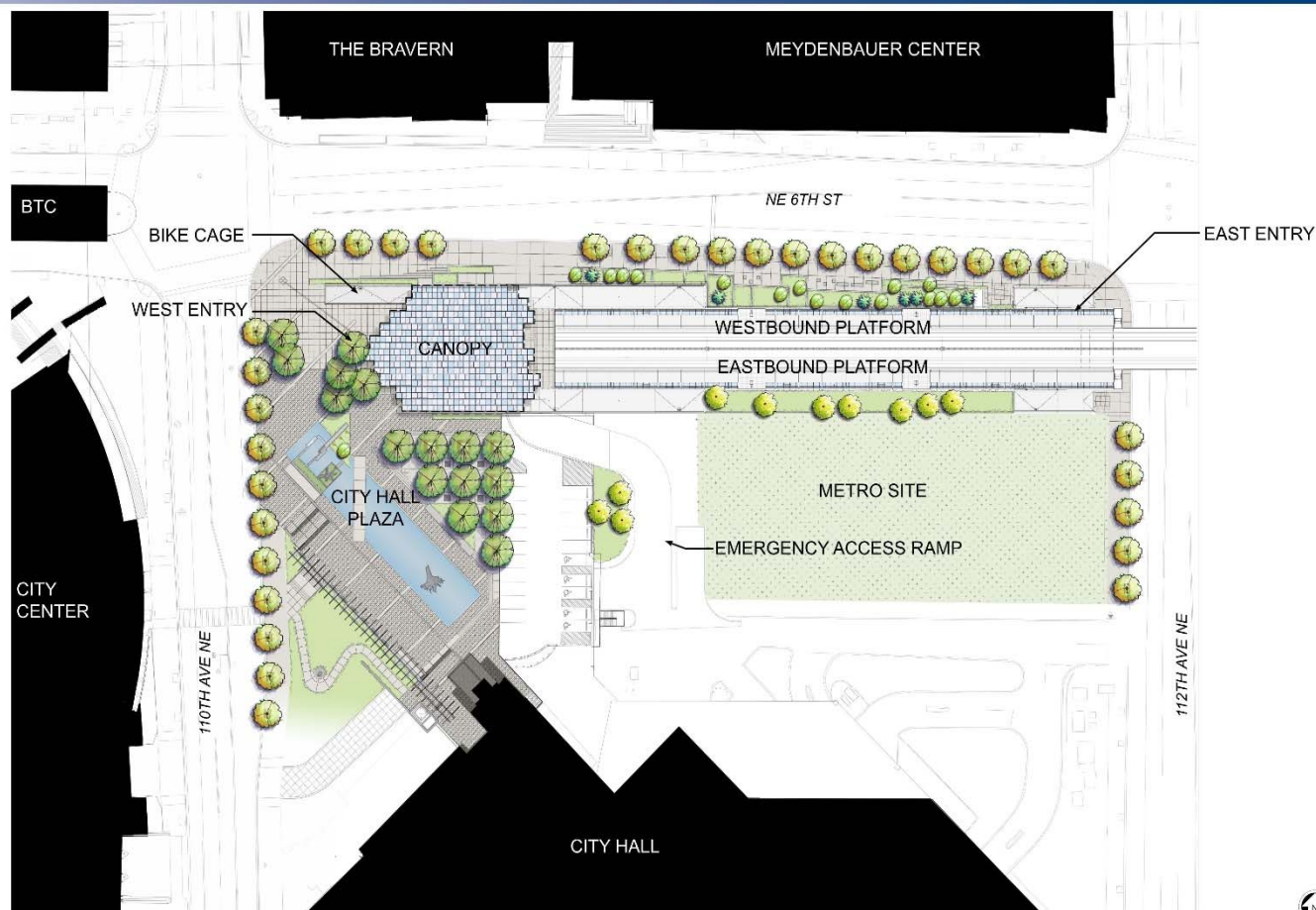
Plan

Bellevue Transit Center



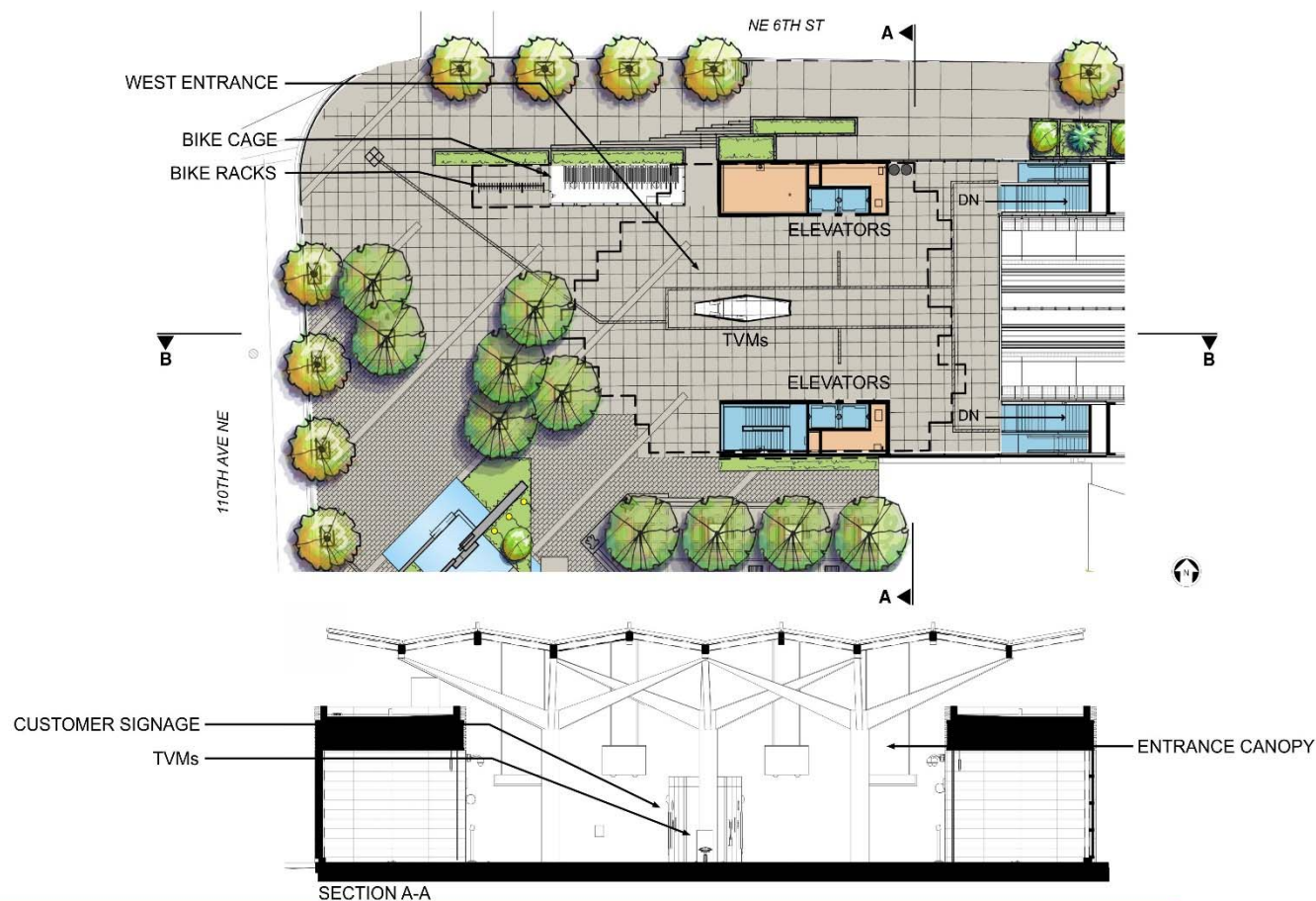
Aerial View From BTC

Bellevue Transit Center



Site Plan

Bellevue Transit Center



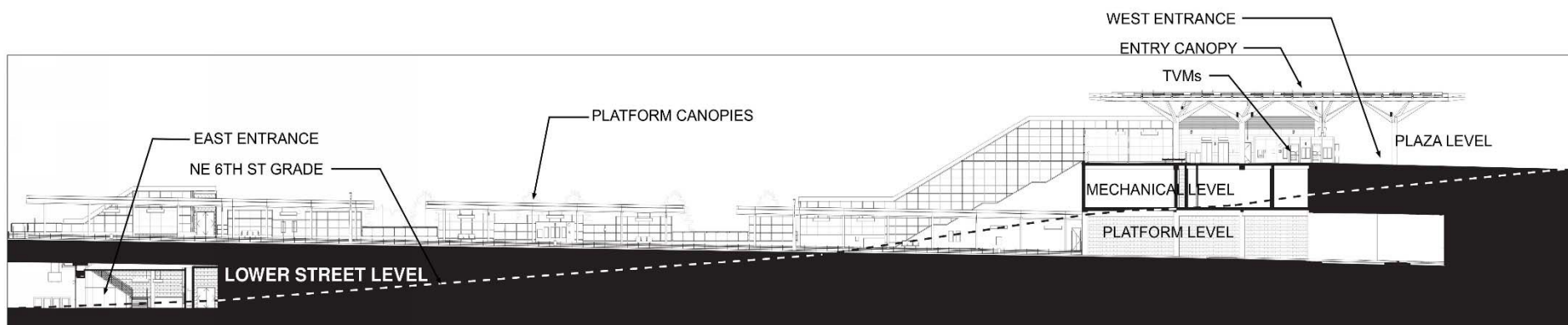
West Entrance Plan & Section

Bellevue Transit Center



West Entry View

Bellevue Transit Center



SECTION B-B

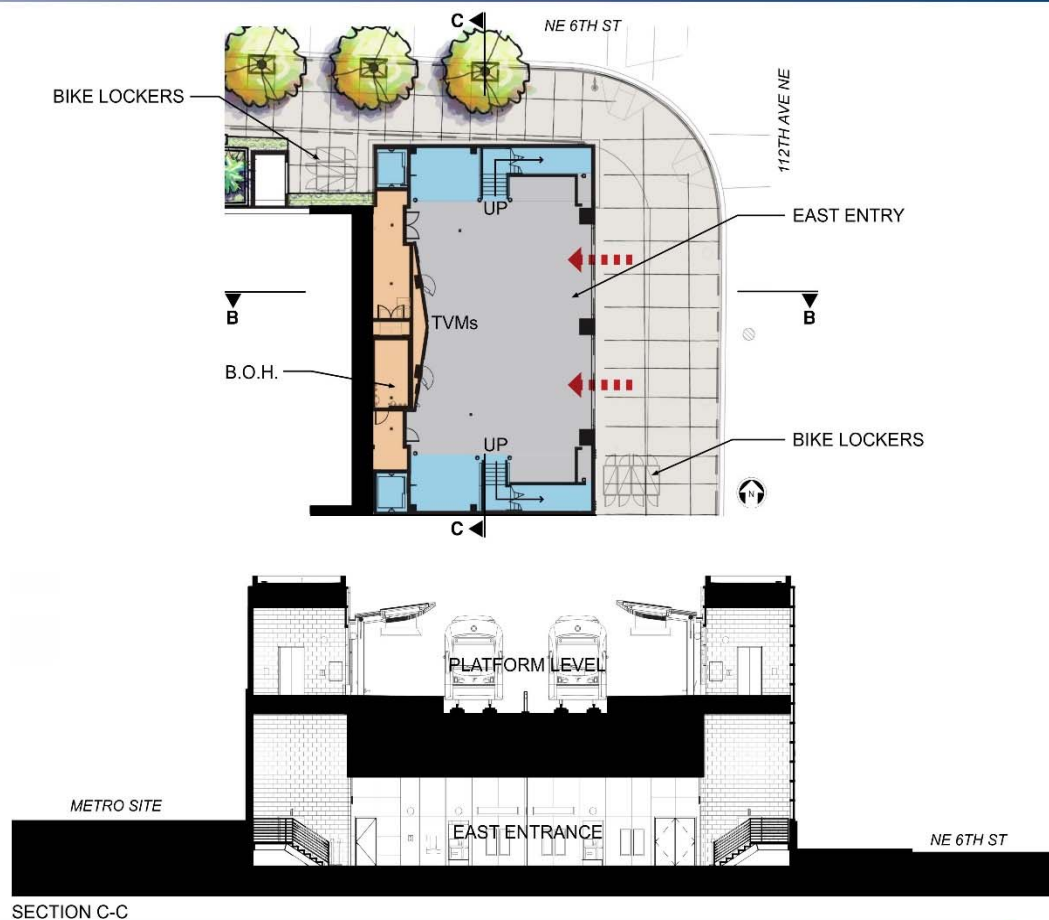
Longitudinal Section

Bellevue Transit Center



Platform View

Bellevue Transit Center

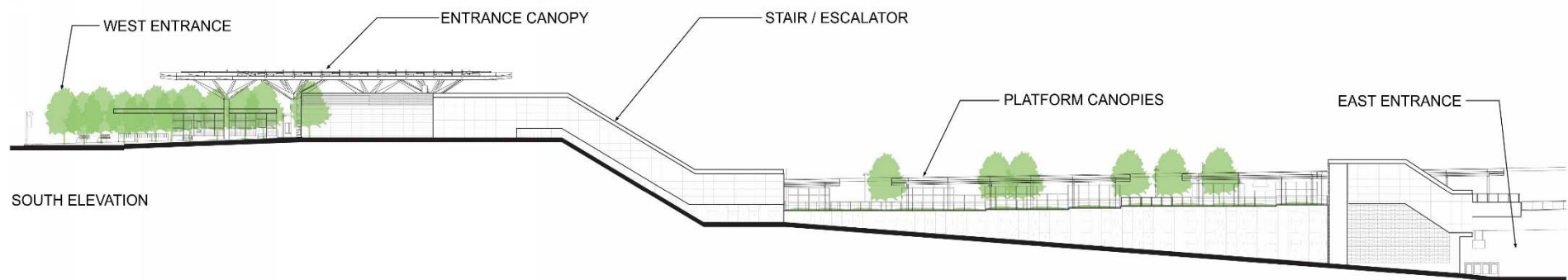
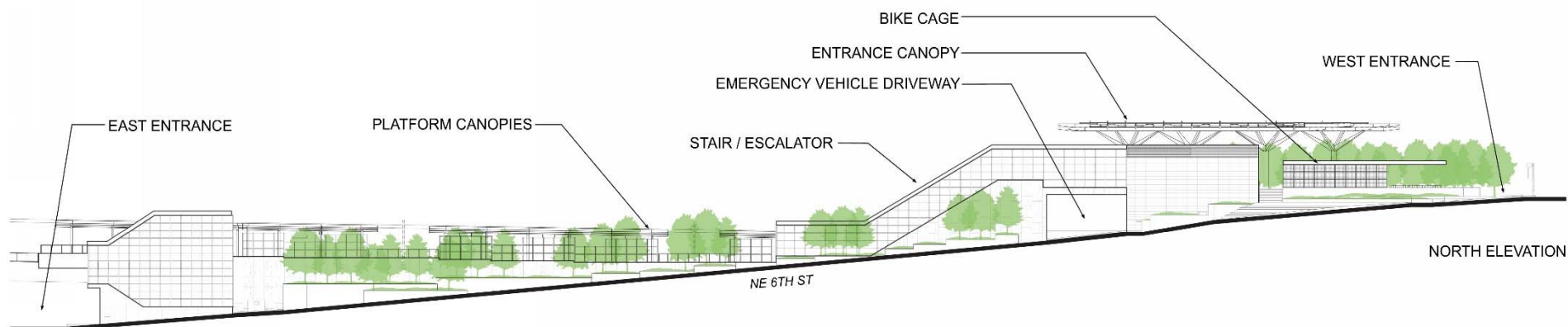


Lower Street Level Plan

Bellevue Transit Center

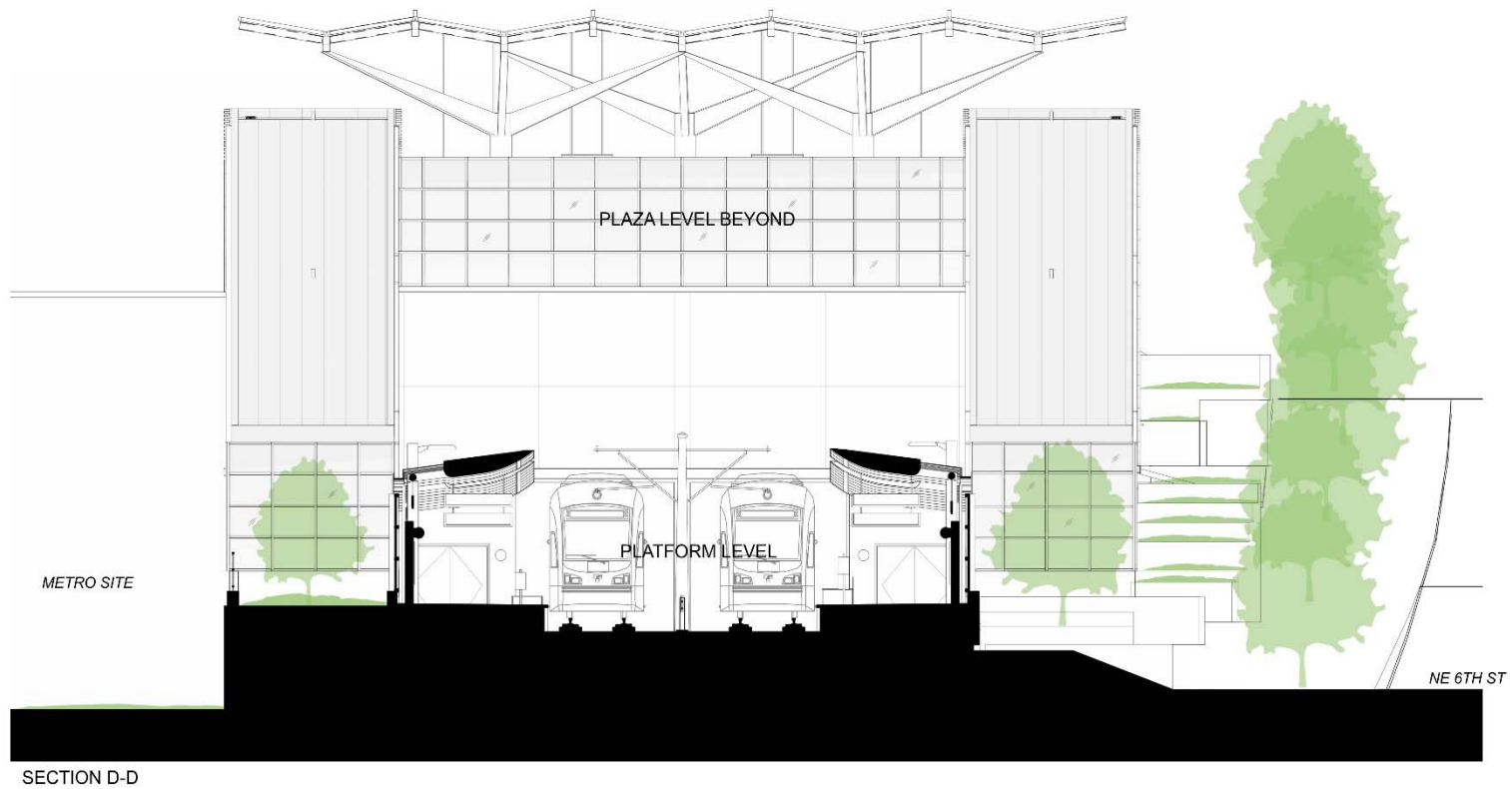


Bellevue Transit Center



North & South Elevations

Bellevue Transit Center



Cross Section

112th & 6th SIGNAL HOUSE
VIEW FROM NE 6th ST
EAST LINK EXTENSION



112th & 6th SIGNAL HOUSE SITE PLAN

EAST LINK EXTENSION



Questions?



SHRUBS & GROUNDCOVERS



Deer Fern
Polystichum acrostichum
Fern proposed as an accent plant throughout the coastal planters on the north side of the BTC Station.



Apple Blossom Evergreen Camellia
Camellia japonica 'Apple Blossom'
Flowering shrub proposed along a retaining wall north of the station area.



Tom Thumb Fuchsia
Fuchsia 'Tom Thumb'
Deciduous shrub proposed for the coastal planters on the north side of the BTC Station.



Betty's Purple Haze
Ribes coccineum 'Betty's Purple Haze'
Evergreen shrub proposed for the coastal planters on the north side of the BTC Station.



Japanese Sarsaparilla
Forsythia viridissima
Fern proposed as an accent plant throughout the coastal planters on the north side of the BTC Station.



Japanese Tassel Fern
Adiantum pedatum
Fern proposed as an accent plant for the coastal planters on the south side of the BTC Station.



Wreath of Fire Daylily
Lilium 'Wreath of Fire'
Flowering perennial proposed throughout the coastal planters on the south side of the BTC Station.



Silver Dust
Lonicera xylosteum
Deciduous shrub proposed throughout the BTC Station coastal planters.



Redwood Forest
Daphne genkwa
Groundcover proposed throughout the coastal planters on the north side of the BTC Station.



Spring Crocus
Crocus
Flowering perennial proposed for the coastal planters on the south side of the BTC Station.



Spider Chalk Flower
Guzmania monstrosa
Fern proposed throughout the coastal planters on the north side of the BTC Station.

BTC Station Plant Palette

TREES



BTC Station Plant Palette

BTC STATION - MATERIAL BOARD

EAST LINK EXTENSION



WEST ENTRY VIEW



TICKET VENDING WALLS



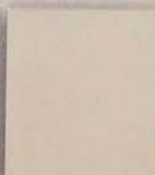
CANOPY ACCENT GLASS



CANOPY GLASS



PAINTED STEEL



GLAZING MULLIONS



EAST ENTRY VIEW



EAST ENTRY WALLS



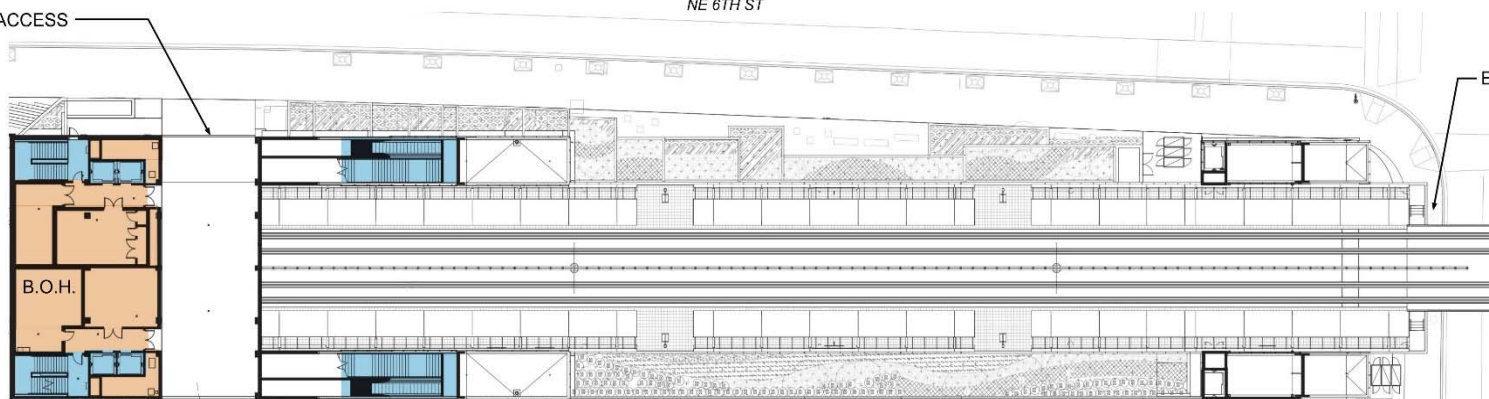
EAST ENTRY CEILING

Bellevue Transit Center

EMERGENCY VEHICLE ACCESS

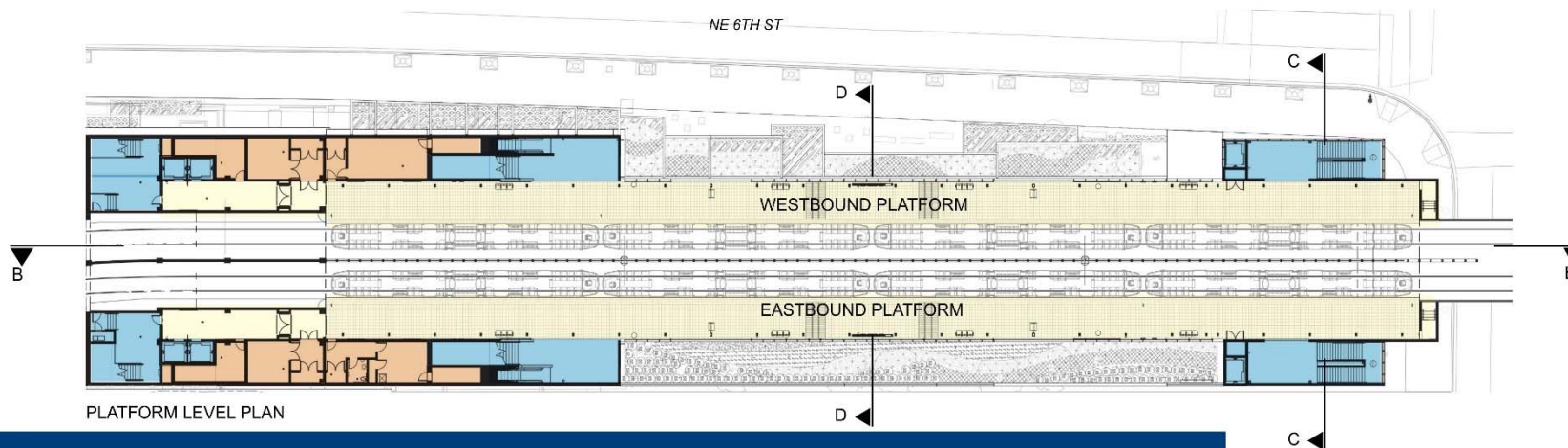
NE 6TH ST

EAST ENTRY



MECHANICAL LEVEL PLAN

NE 6TH ST



PLATFORM LEVEL PLAN

Mezzanine & Platform Level Plans



 **SOUNDTRANSIT**
RIDE THE WAVE

