



East Link Extension

Bel-Red Tree Mitigation

Light Rail Permitting Citizen Advisory Committee

July 2, 2014

Bel-Red Permit Tree Mitigation

Overview

- City of Bellevue Tree Mitigation Criteria
- Tree Survey Methodology
- Summary

City of Bellevue Criteria

- Three Different Regulations Apply
 - Critical Areas
 - Bel-Red Overlay
 - General Development Requirements
- City of Bellevue Best Management Practices (BMPs) for tree preservation
- In Critical Areas
 - Three new conifers for one tree removed

Methodology

- Tree Assessment
 - Tree location survey – all trees greater than 4 in diameter breast height
 - Tree identification classification
 - Species
 - Category
 - Significant
 - Health
- Tree removal overview
 - Trees within the foot print
 - Clear Zone - 34ft from centerline

Tree Survey & Removal - Summary

E340 Design Package Tree Impacts	Light Rail/Bel-Red Overlay Areas	Critical Areas		Critical Area Buffer	
		Coniferous	Deciduous	Coniferous	Deciduous
Total Significant Trees		634			
Total Significant Trees by District	549	3	16	1	65
Total Significant Trees Removed		372			
Significant Trees Removed by District	282 (+3 hazard)	3	12	0	30
Mitigation Ratio	NA – Preserving 55% of Trees > 15% requirement	3:1	1:1	3:1	1:1

Bel-Red Tree Replanting Summary

E340 Design Package Tree Replacement	Light Rail/Bel- Red Overlay Areas	Critical Areas & Critical Area Buffer	
		Coniferous	Deciduous
Proposed Trees to be Planted	255	79	123
Total Trees to be Planted	457		

Tree Specifications

- Pyramidal European Hornbeam, Summit Ash, Crape Myrtle, English Oak, Greenspire Little Leaf Linden, Ginkgo, and Venus Dogwood
2-2 ½" caliper
Min. 7' ht
- Weeping Yellow Cedar, Shoreline, Austrian Pine and Mountain Hemlock
Min. 12-14' ht
- Deciduous Trees
Min. 2" caliper

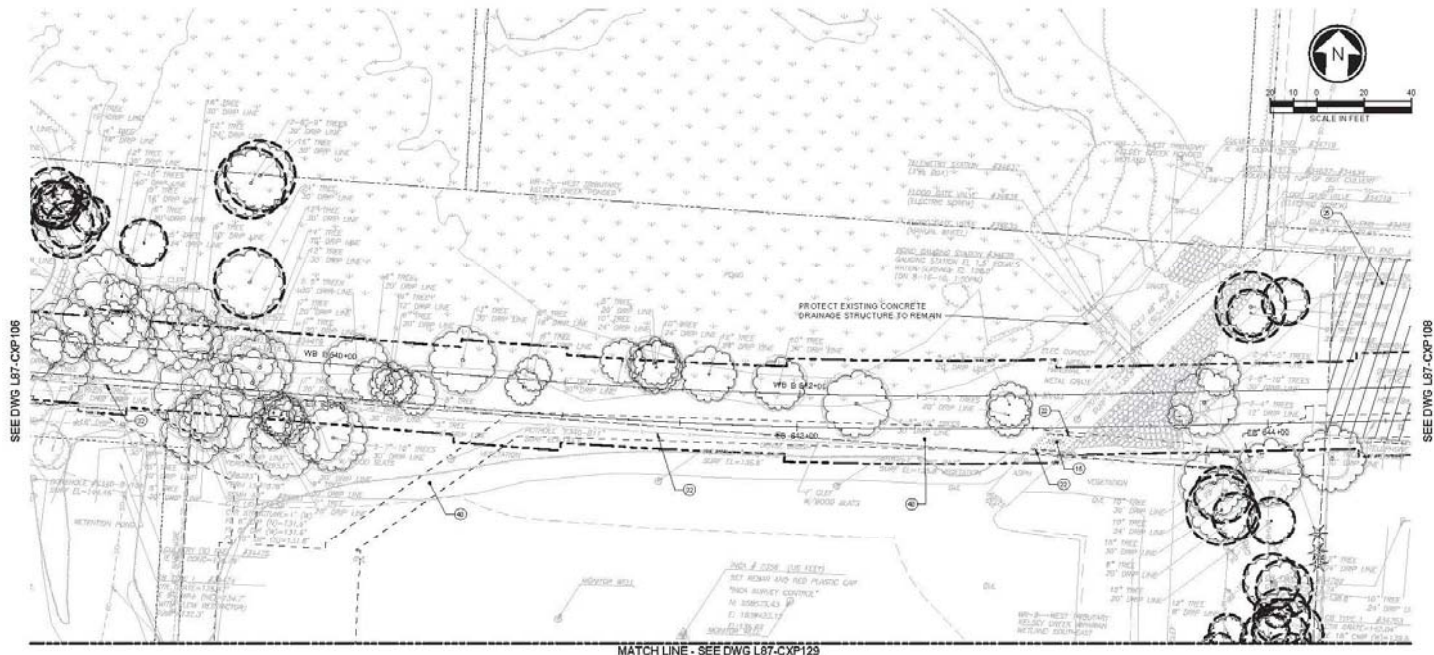
Tree Mitigation Example

West
Tributary
of
Kelsey
Creek



Tree Mitigation Example

West
Tributary
of
Kelsey
Creek



NOTES:

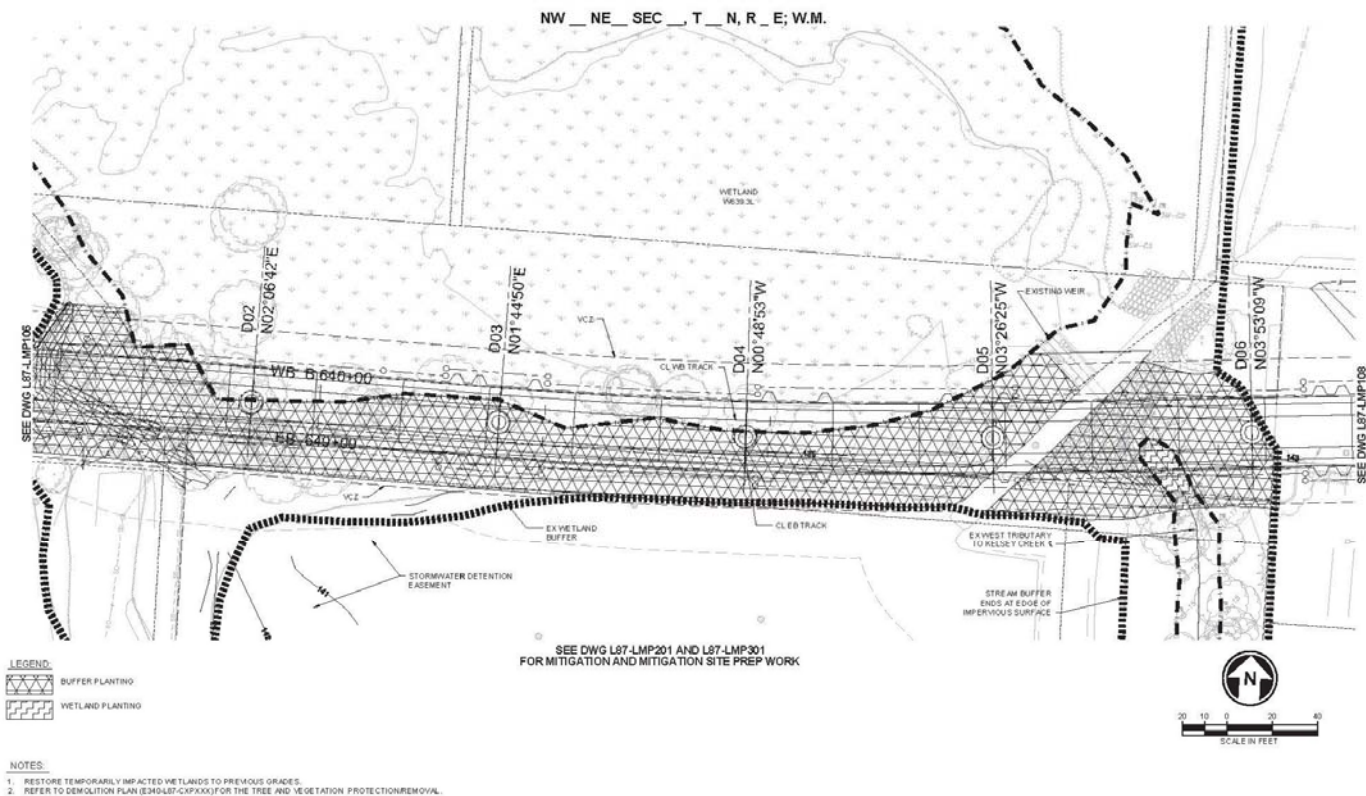
- 1. SEE COMPOSITE UTILITY DRAWINGS AND DRAINAGE DRAWINGS FOR UTILITIES TO BE REMOVED AND THOSE TO REMAIN.
- 2. SEE ILLUMINATION DRAWINGS FOR LUMINAIRES TO BE REMOVED AND THOSE TO REMAIN.
- 3. SEE ROADWAY LEGENDS AND ABBREVIATIONS DRAWING (L87-CXP129) FOR SYMBOLS REFERRING TO TREES TO BE PROTECTED OR THOSE TO BE REMOVED.

CONSTRUCTION NOTES:

- 1. REMOVE ASPHALT CONCRETE.
- 2. SAWCUT EXISTING PAVEMENT.
- 3. REMOVE BUILDING STRUCTURE.
- 4. REMOVE CHAIN LINK FENCE, POST AND FOUNDATIONS.
- 5. REMOVE TREE, LANDSCAPING AND VEGETATION IN CONTRACTOR WORK LIMITS AREA.

Tree Mitigation Example

West
Tributary
of
Kelsey
Creek



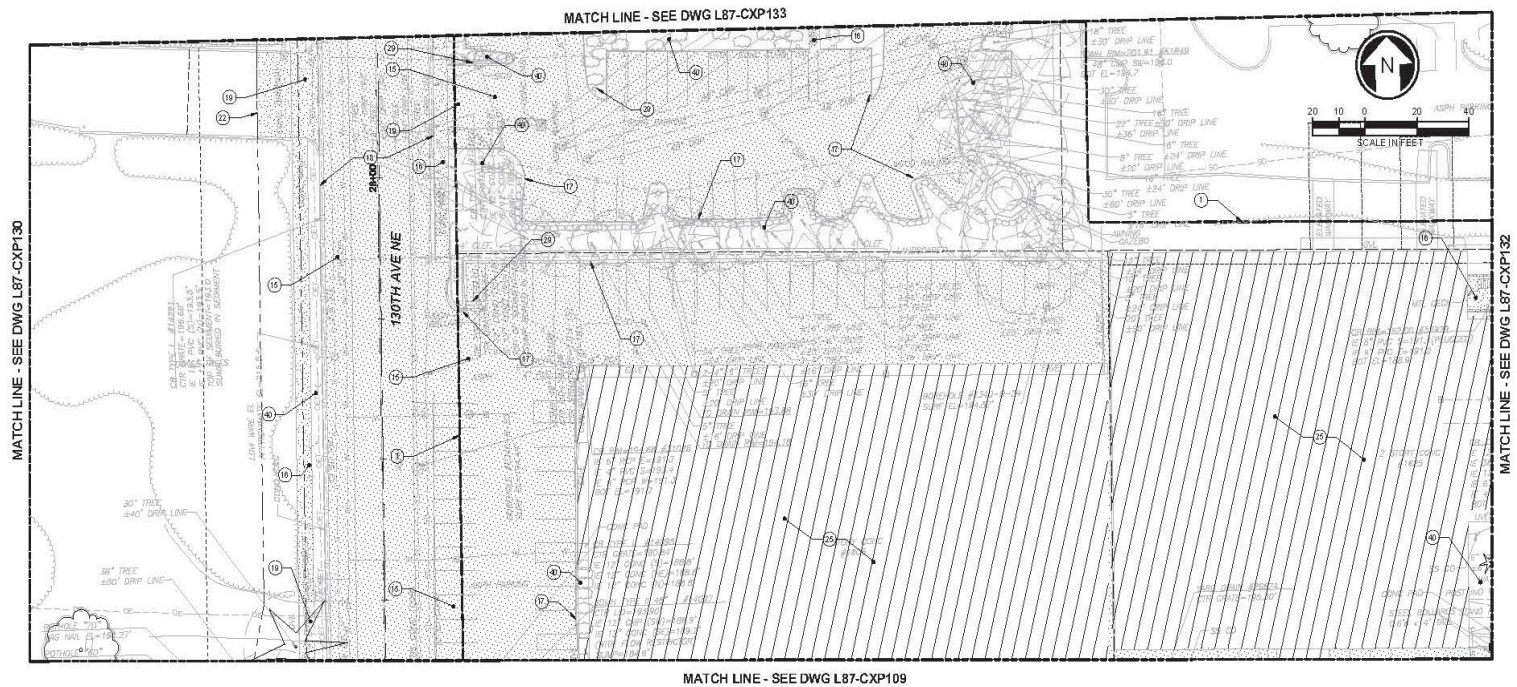
Tree Mitigation Example

130th
Station



Tree Mitigation Example

130th
Station



Tree Mitigation Example

130th
Station

