

Corridor Walls



112th Ave. Retaining Wall



Corridor Walls – Stone Patterns



Layered Stone

Ashlar Stone



Corridor Walls – Stone Patterns



Ashlar Stone

Dry Stack



Corridor Walls – Splitface Patterns

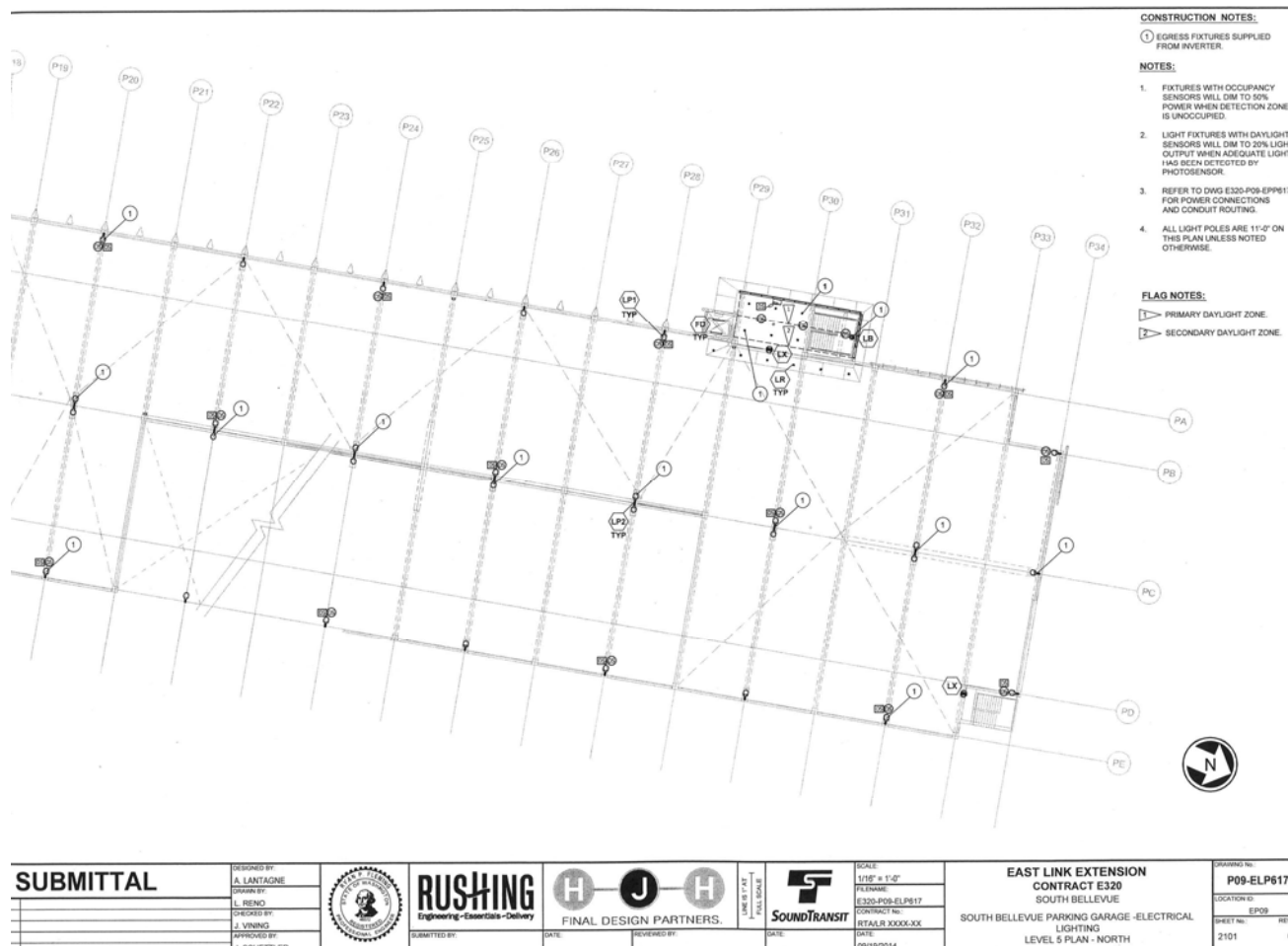


Corridor Walls – High Wall



—

S Bellevue Garage - Lighting



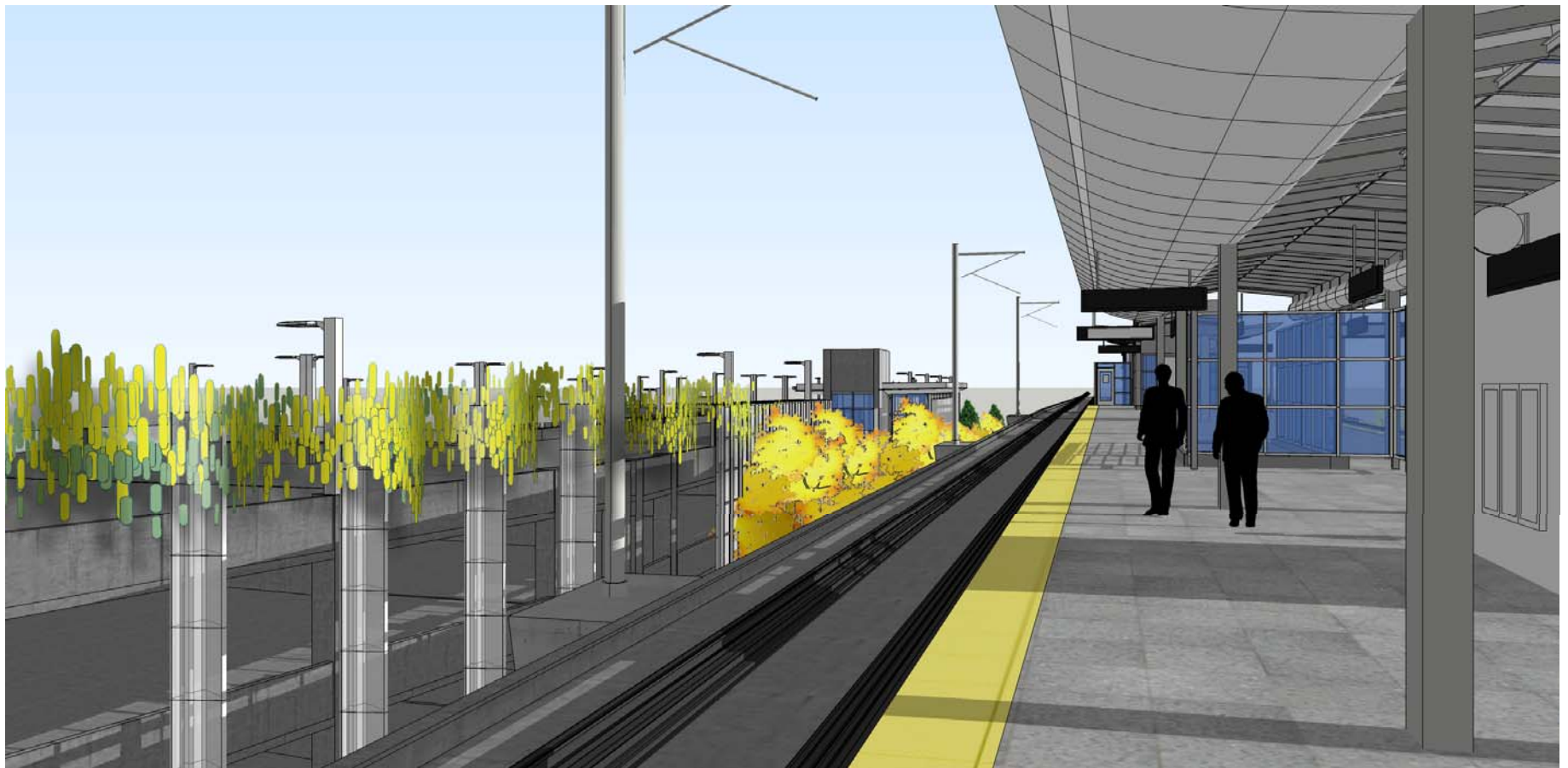
Light poles 11 ft

Fixtures on occupancy sensor to dim to 50% power when sensor zone unoccupied

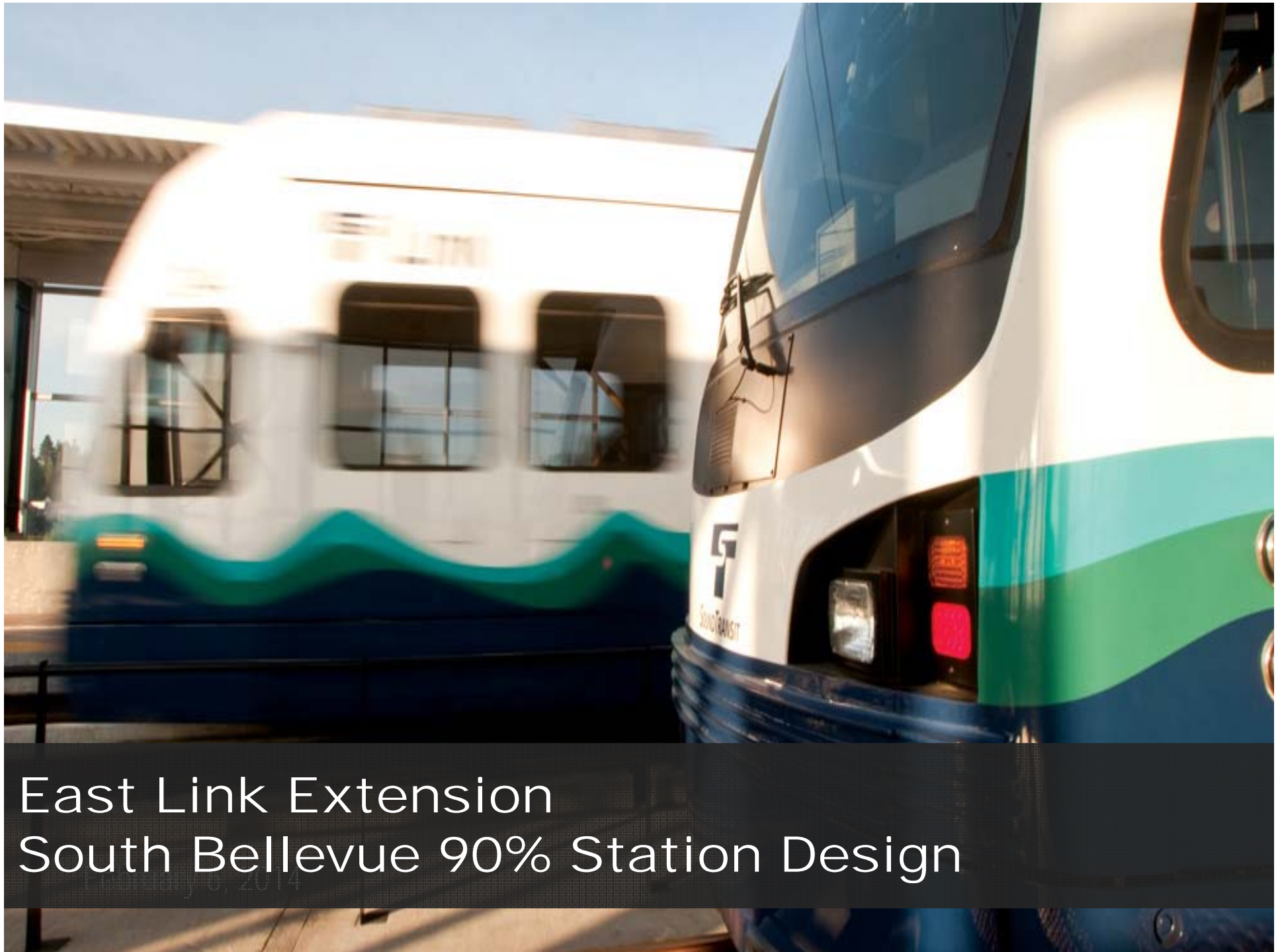
Katy Stone – Perf. Screen



Katy Stone – Garage Front



■



East Link Extension South Bellevue 90% Station Design

February 6, 2014

S. BELLEVUE STATION - LANDSCAPE PLAN

EAST LINK EXTENSION



1 Existing Trees – SE End



4 Existing Trees – South, From Park



7 Existing Trees – East, From Park



8 Existing Trees – East, From Park



10 Existing Trees – With Guideway & Garage



SOUTH BELLEVUE STATION - LANDSCAPE PLAN

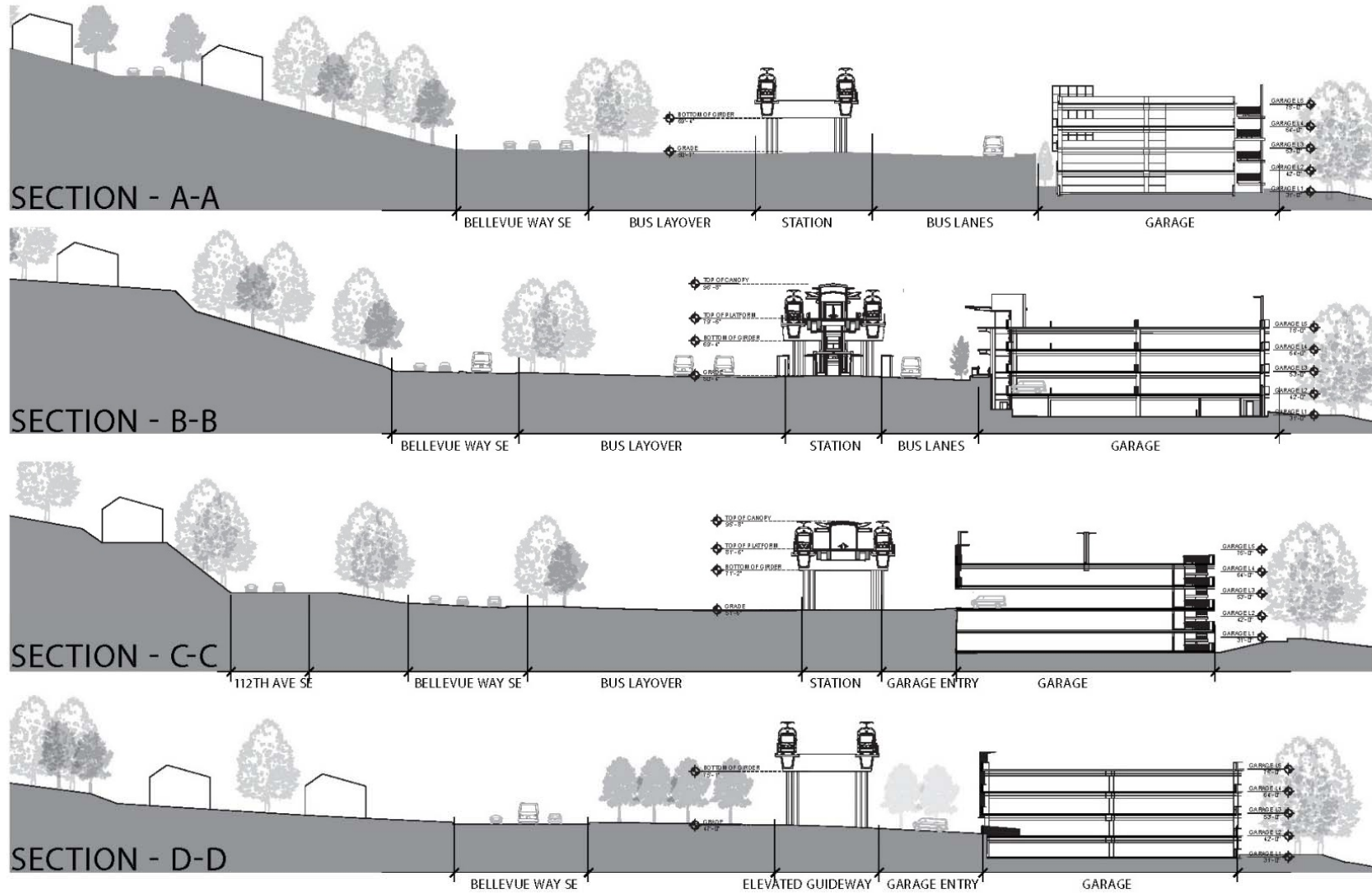
EAST LINK EXTENSION



FEB. 2014

SOUTH BELLEVUE STATION - OVERALL SITE SECTIONS

EAST LINK EXTENSION



View From House #1



View From House #4



View From House #9



S. BELLEVUE STATION - LANDSCAPE PLAN

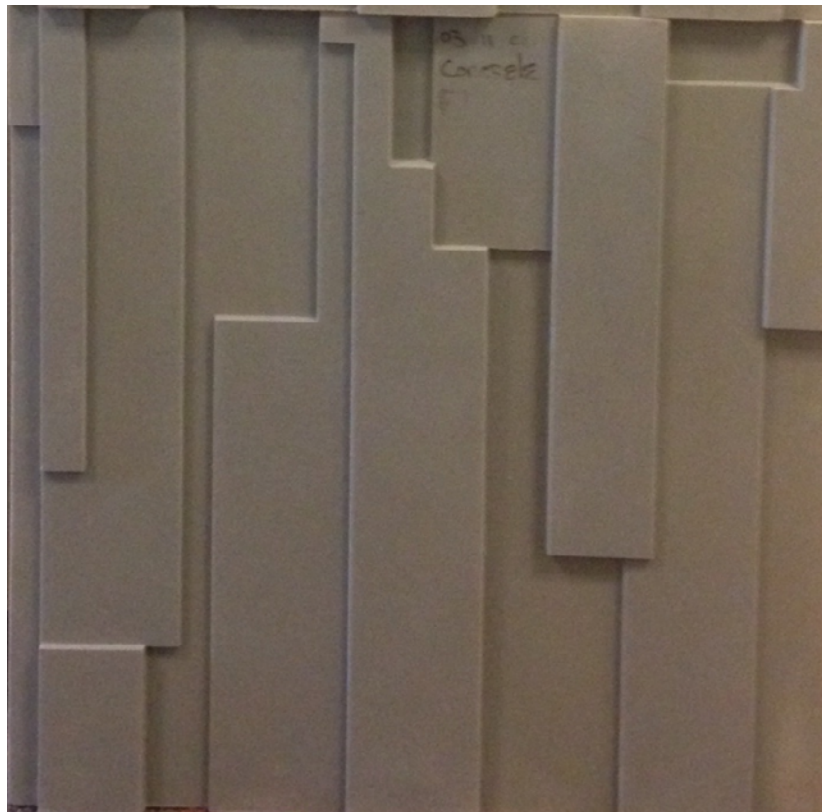
EAST LINK EXTENSION



112th Ave. Signal House



Corridor Walls



S. BELLEVUE STATION - LANDSCAPE PLAN

EAST LINK EXTENSION



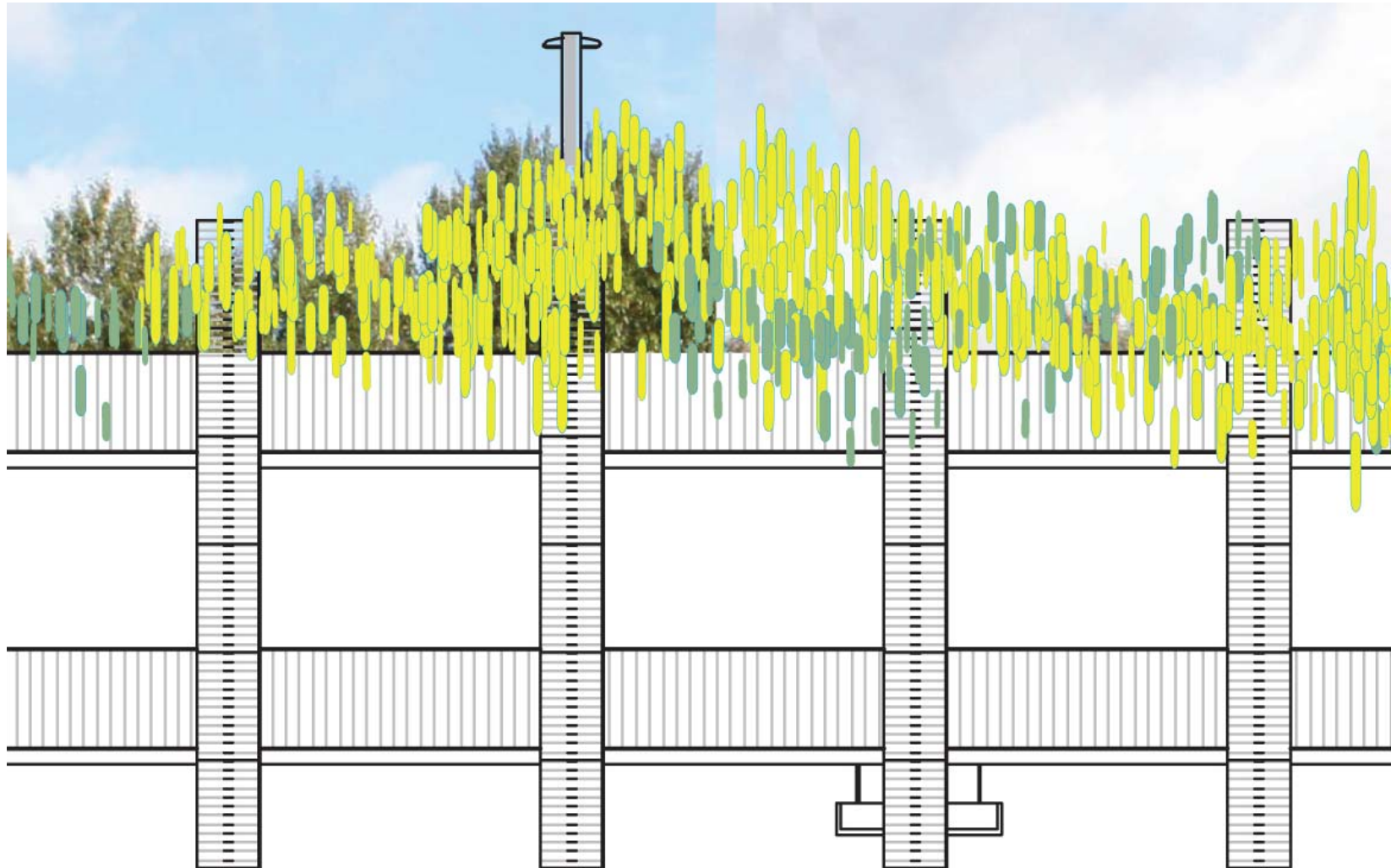


CONTEXT - BOARDWALKS

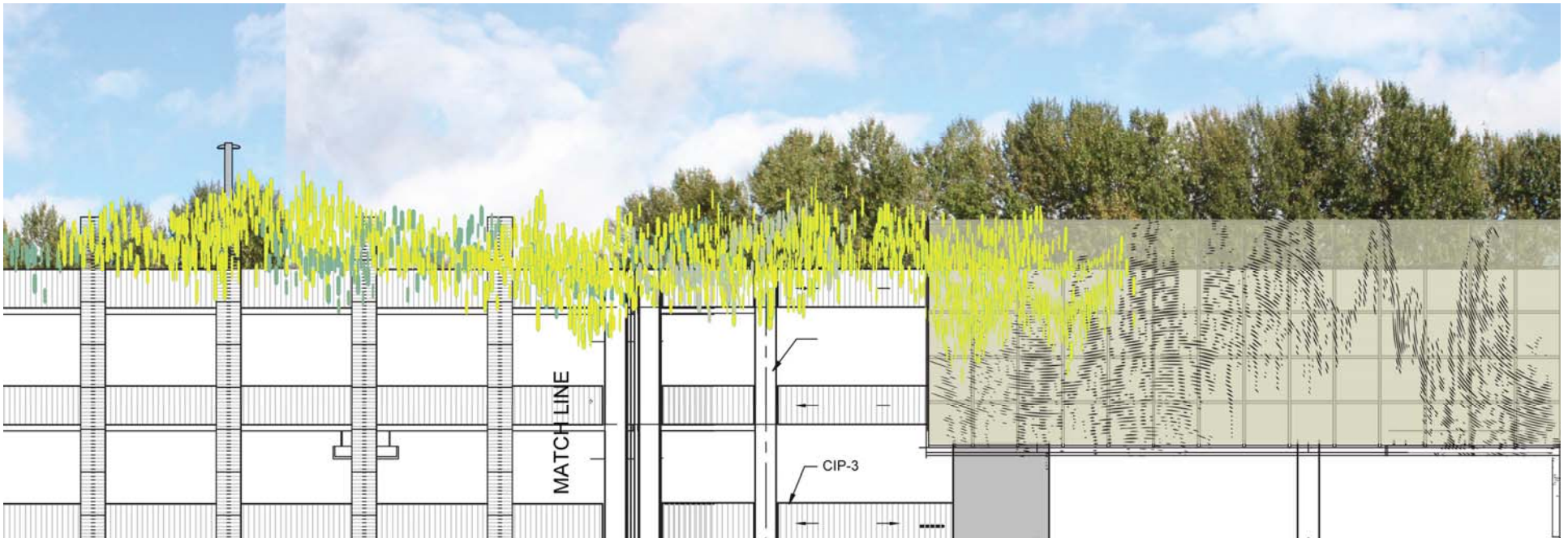
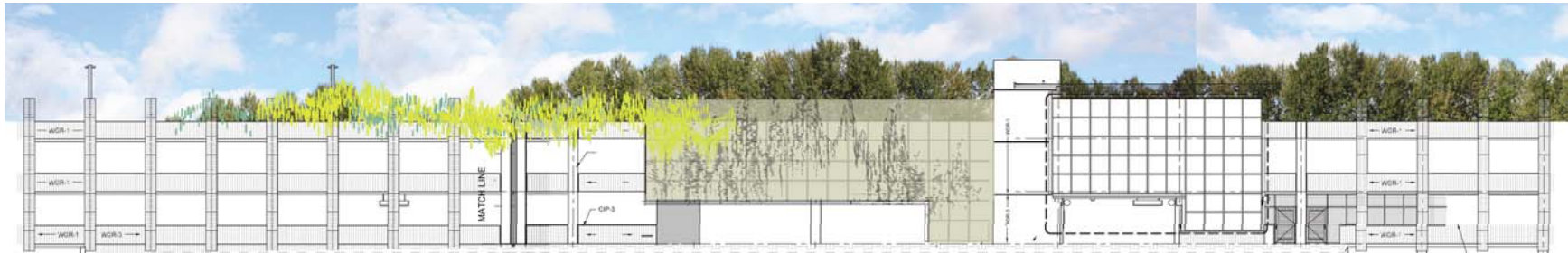
Katy Stone – Garage Front Inspiration



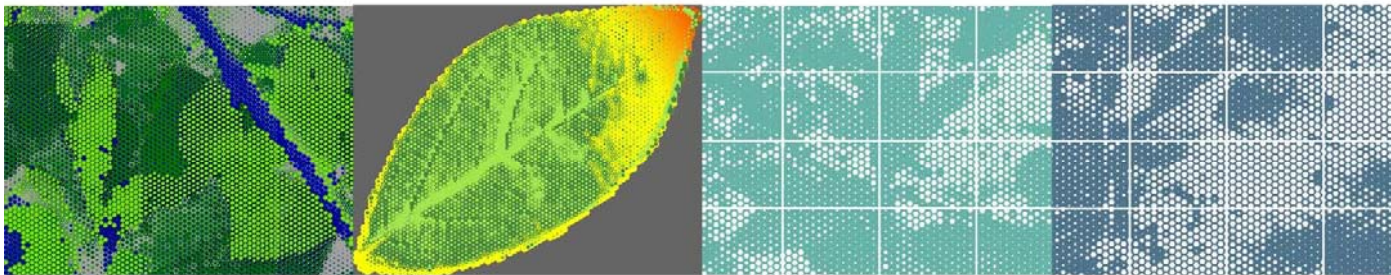
Katy Stone – Garage Front



Katy Stone – Garage Front



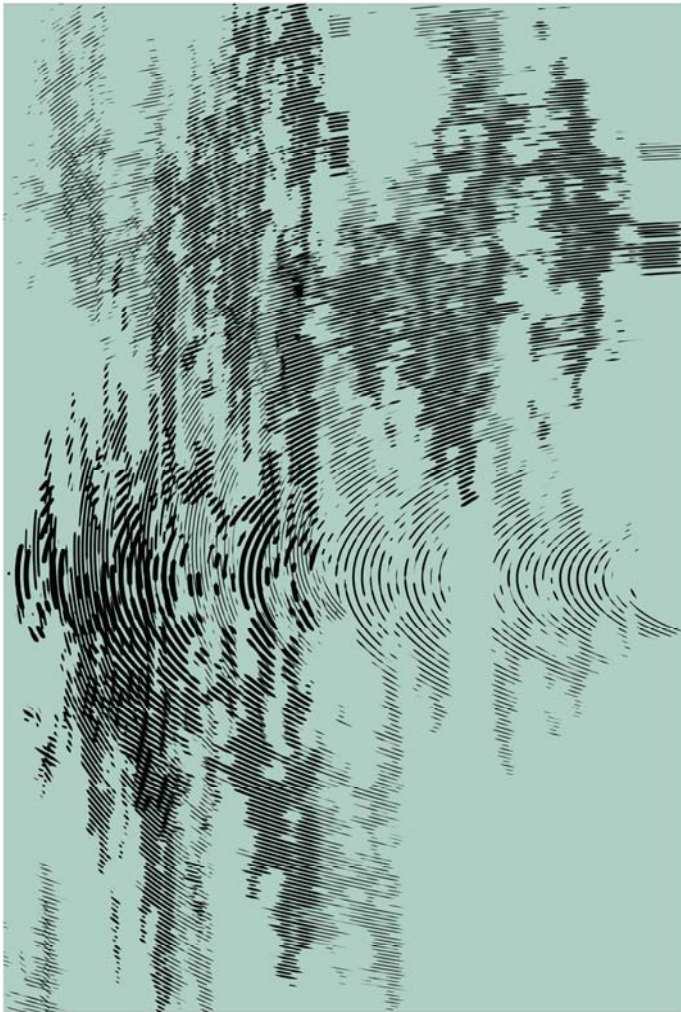
V. Scuri - Station Art



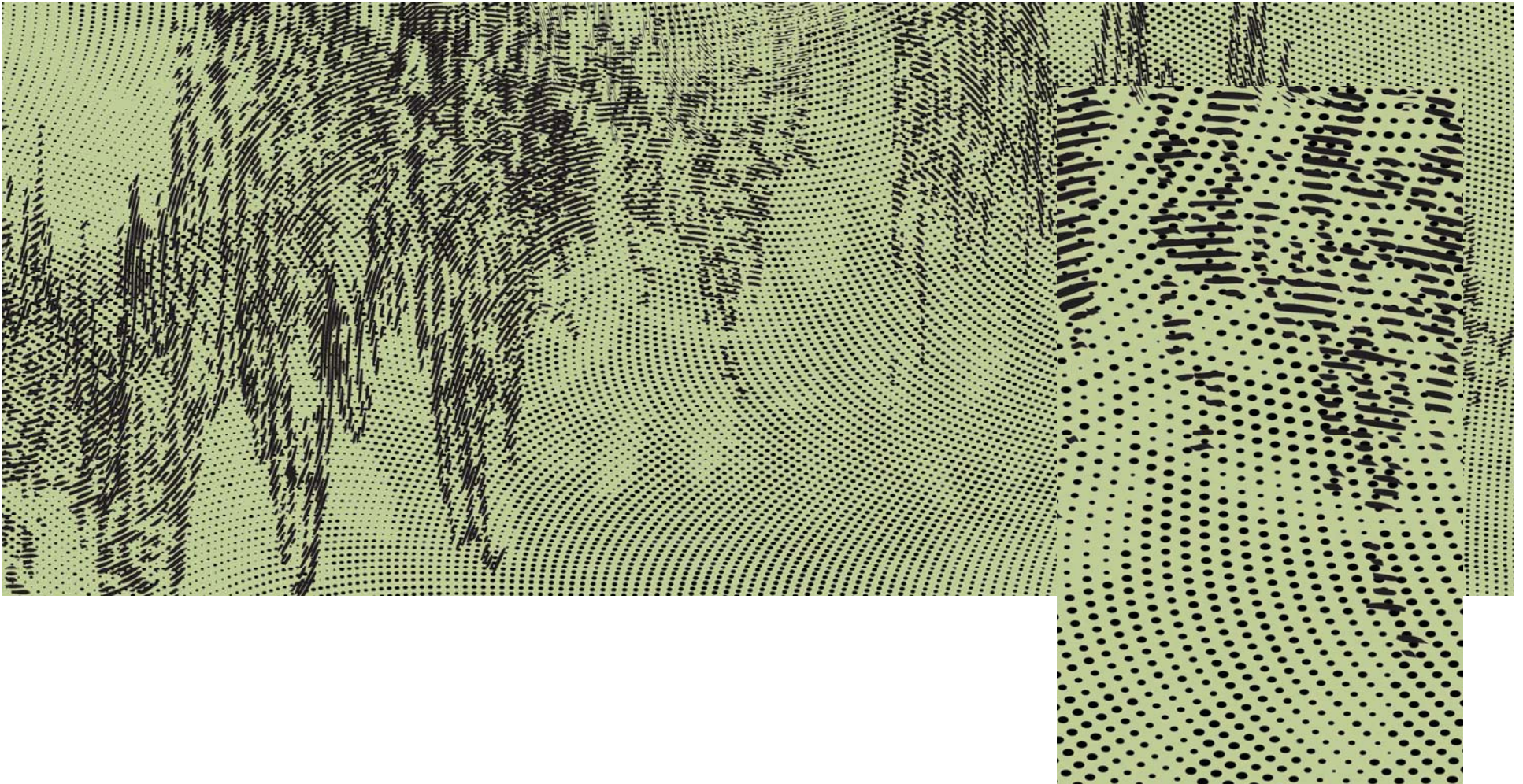
Katy Stone – Perf. Screen Inspiration



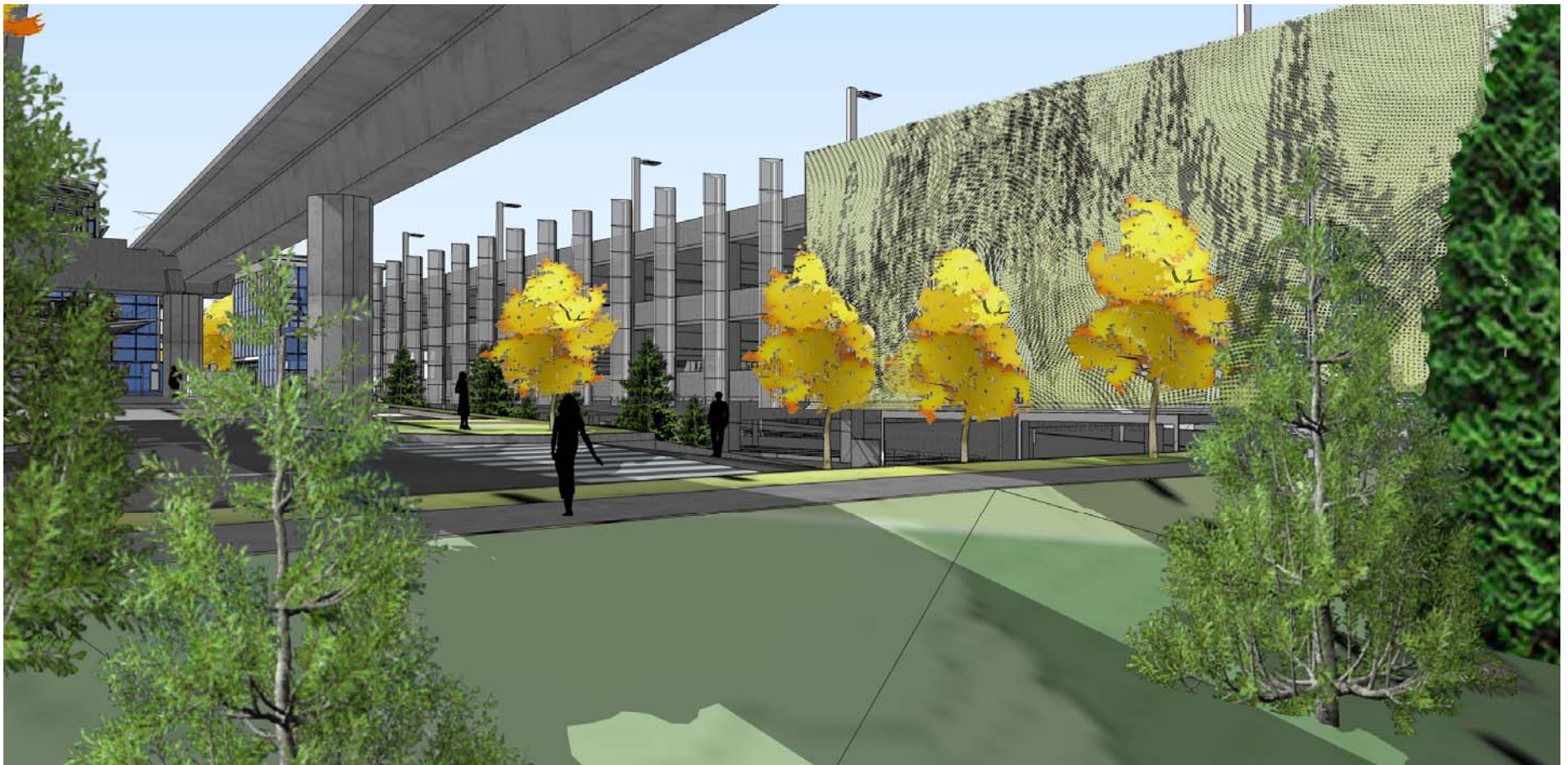
Katy Stone – Perf. Screen / Conc. Relief



Katy Stone – Perf. Screen



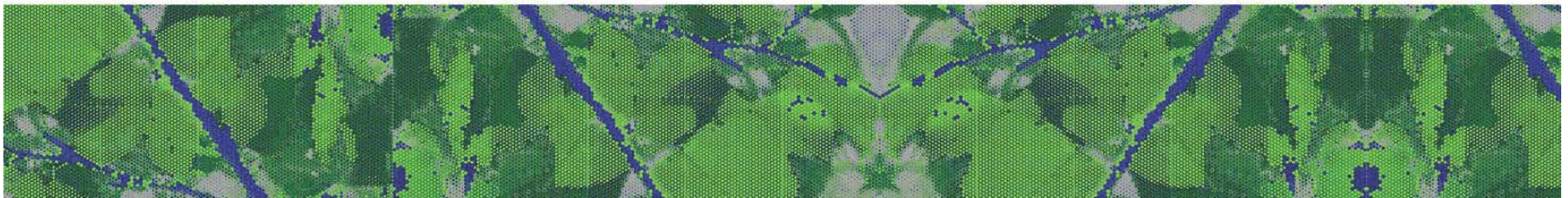
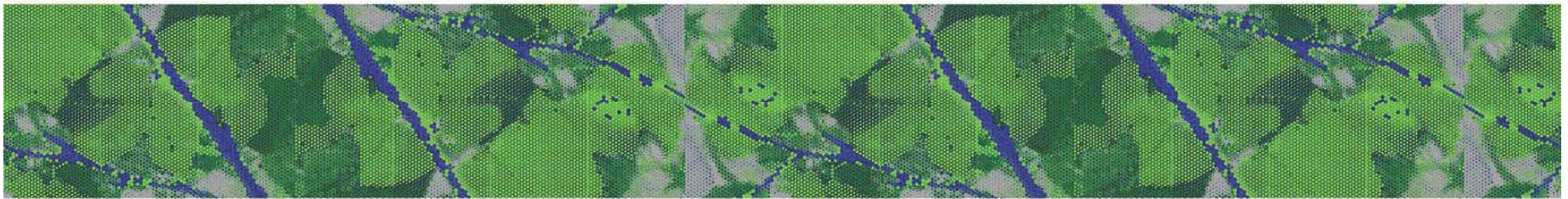
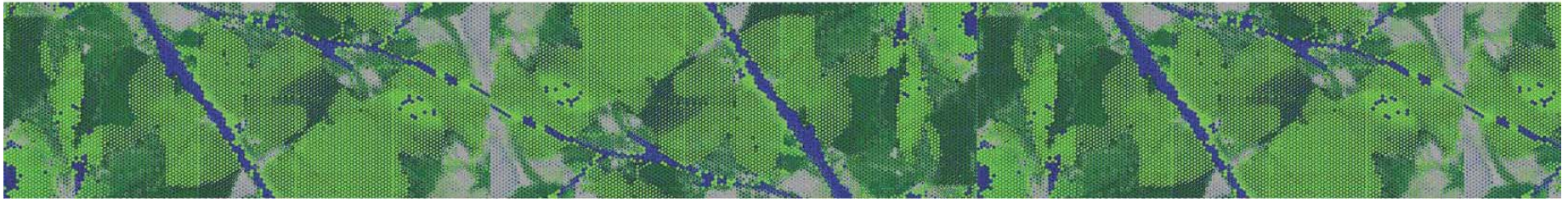
Katy Stone – Perf. Screen



V. Scuri – Acoustic Panel Inspiration



V. Scuri – Acoustic Panel Patterns



SOUTH BELLEVUE STATION - GARAGE AND STATION PLATFORM RENDERINGS

EAST LINK EXTENSION



NOV. 2014

SOUTH ENTRY VIEW

Garage Walls



SOUTH BELLEVUE STATION - PERSPECTIVE SOUTH ENTRY
EAST LINK EXTENSION

60 % Design, Feb. 2014



FEB. 2014

SOUTH BELLEVUE STATION - GARAGE AND STATION PLATFORM RENDERINGS

EAST LINK EXTENSION



NOV. 2014

NORTH STATION ENTRY VIEW

-

—

S. BELLEVUE STATION MATERIALS - PLANTINGS & HARDSCAPE

EAST LINK EXTENSION

TREES - EVERGREEN



Shore Pine
Pinus contorta var. *contorta*

Screening evergreen tree proposed for around the station perimeter.



Western Hemlock
Tsuga hereophylla

Screening evergreen tree proposed for the station perimeter.



Western Red Cedar
Thuja plicata

Screening evergreen tree proposed for around the station perimeter.



Mountain Hemlock
Tsuga mertensiana

Evergreen tree proposed for screening the station perimeter and the west side of the parking garage.



TREES - DECIDUOUS



Pyramidal European Hornbeam
Carpinus betulus 'fastigiata'

Proposed street tree for along Bellevue Way SE in front of the station.



Vine Maple
Acer circinatum

Small, native, understory tree proposed for around the parking garage.

photo by: Ed Book



Maidenhair Tree
Ginkgo biloba 'fastigiata'

Deciduous tree proposed for along entryways to the station.



Tuscarora Crape Myrtle
Lagerstroemia indica 'Tuscarora'

Small deciduous tree proposed for west side of station plazas.



SHRUBS



Mugo Pine
Pinus mugo 'Mugo'

Large evergreen shrub proposed for screening.



Salal
Gaultheria shallon

Evergreen shrub proposed for use throughout the station landscape.



American Cranberry Bush
Viburnum opulus var. *americanum*

Large, deciduous, flowering shrub proposed for under the guideway at the station.



Western Azalea
Rhododendron occidentale

Large, deciduous, flowering shrub proposed for the west side of the parking garage.

S. BELLEVUE STATION MATERIALS - PLANTINGS & HARDSCAPE

EAST LINK EXTENSION

SHRUBS (CONT.)



Sunshine Blueberry
Vaccinium 'Sunshine Blue'

Deciduous shrub with edible berries proposed for near the sidewalk along Bellevue Way SE.



Birch Leaf Spirea
Spiraea betulifolia 'Tor'

Deciduous shrub proposed for bioretention areas and along entryways to the station.



Evergreen Huckleberry
Vaccinium ovatum

Evergreen shrub proposed throughout the station landscape.



Gold Star Cinquefoil
Potentilla fruticosa 'Gold Star'

Deciduous shrub proposed for the right-of-way along Bellevue Way SE and for the west side of the parking garage.

GROUNDCOVERS & PERENNIALS



Slough Sedge
Carex obnupta

A wetland sedge proposed for bioretention areas.



Western Wild Ginger
Asarum caudatum

Evergreen, native, groundcover proposed around the station plazas and in the air well landscaping on the west side of the parking garage.



New Zealand Sedge
Carex testacea

Ornamental evergreen sedge proposed for used throughout the station landscape.



Blueberry and Sedum Mix
Camas, Vacciniums, and Sedums

A mixture of flowering camas, sedums, and low-growing blueberry shrubs proposed for areas near sidewalks leading to the station.

HARDSCAPE



Bioretention

Planters and areas proposed to receive rainwater collected from overhead platform and guideway and to receive stormwater runoff from surface parking areas.

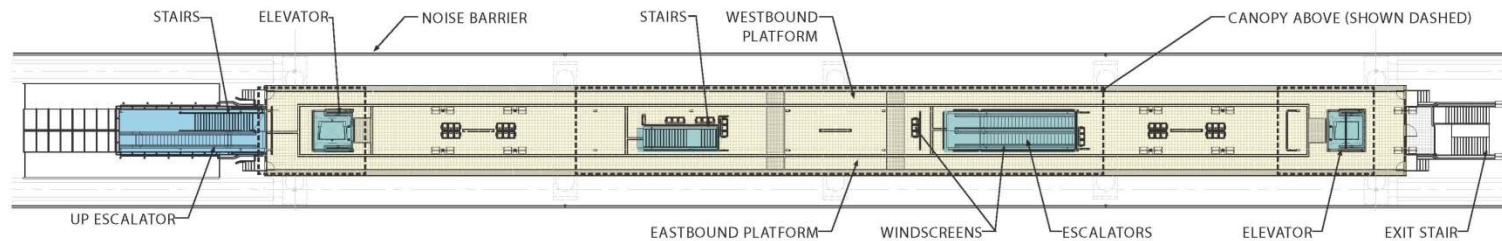


Boardwalk Paving

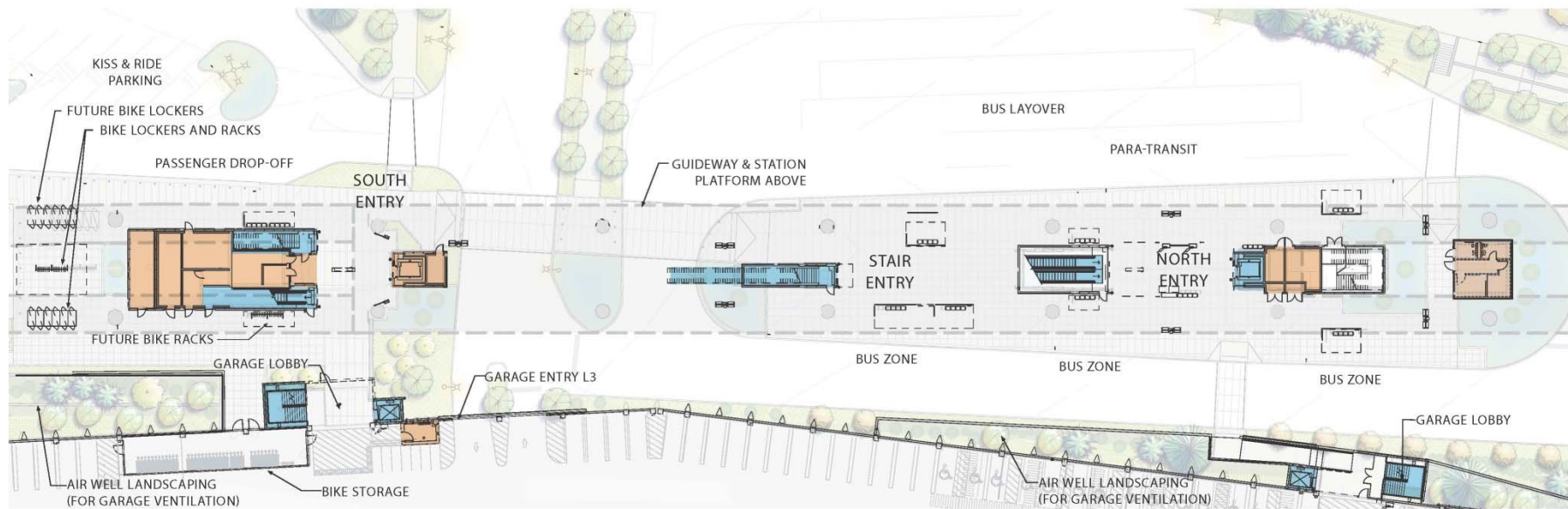
A sawcut boardwalk pattern with integral color is proposed for station paving to delineate the main circulation routes. A complimentary scoring pattern consists of 3'x3' squares in standard grey concrete. Boardwalk inspired curbs are used at selected planting beds.

SOUTH BELLEVUE STATION - PLATFORM AND GRADE LEVEL PLANS

EAST LINK EXTENSION



PLATFORM LEVEL PLAN



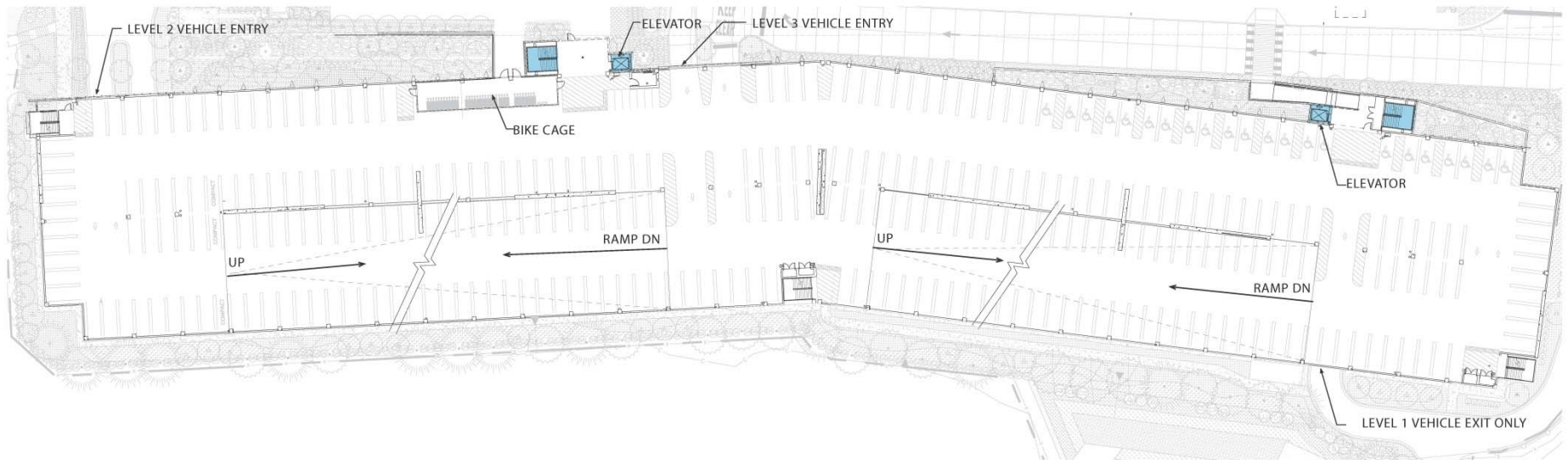
GRADE LEVEL PLAN

LEGEND

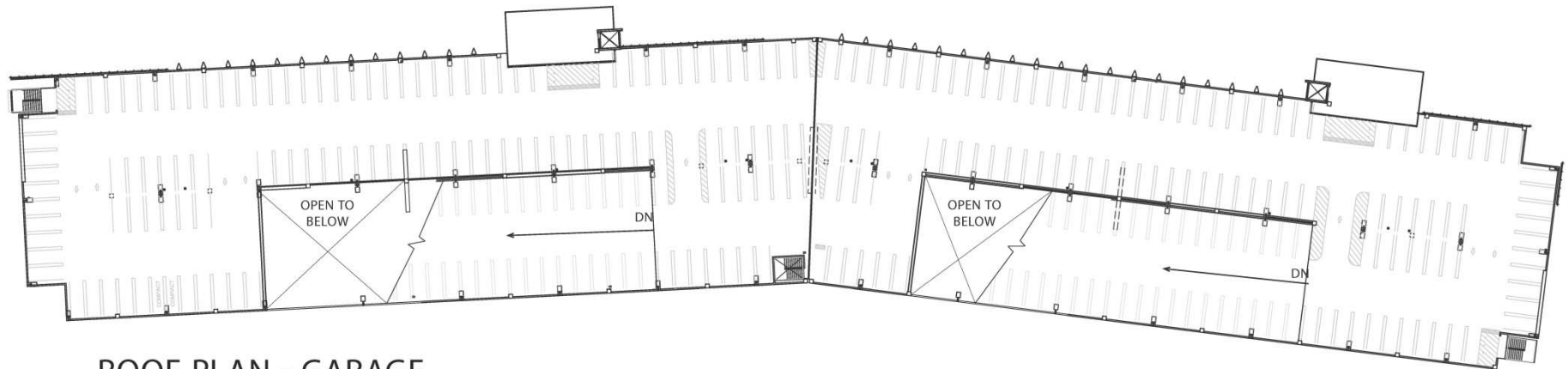
PLATFORM	
SERVICE	
PUBLIC CIRCULATION	

SOUTH BELLEVUE STATION - STATION 3RD AND ROOF LEVEL PLANS

EAST LINK EXTENSION

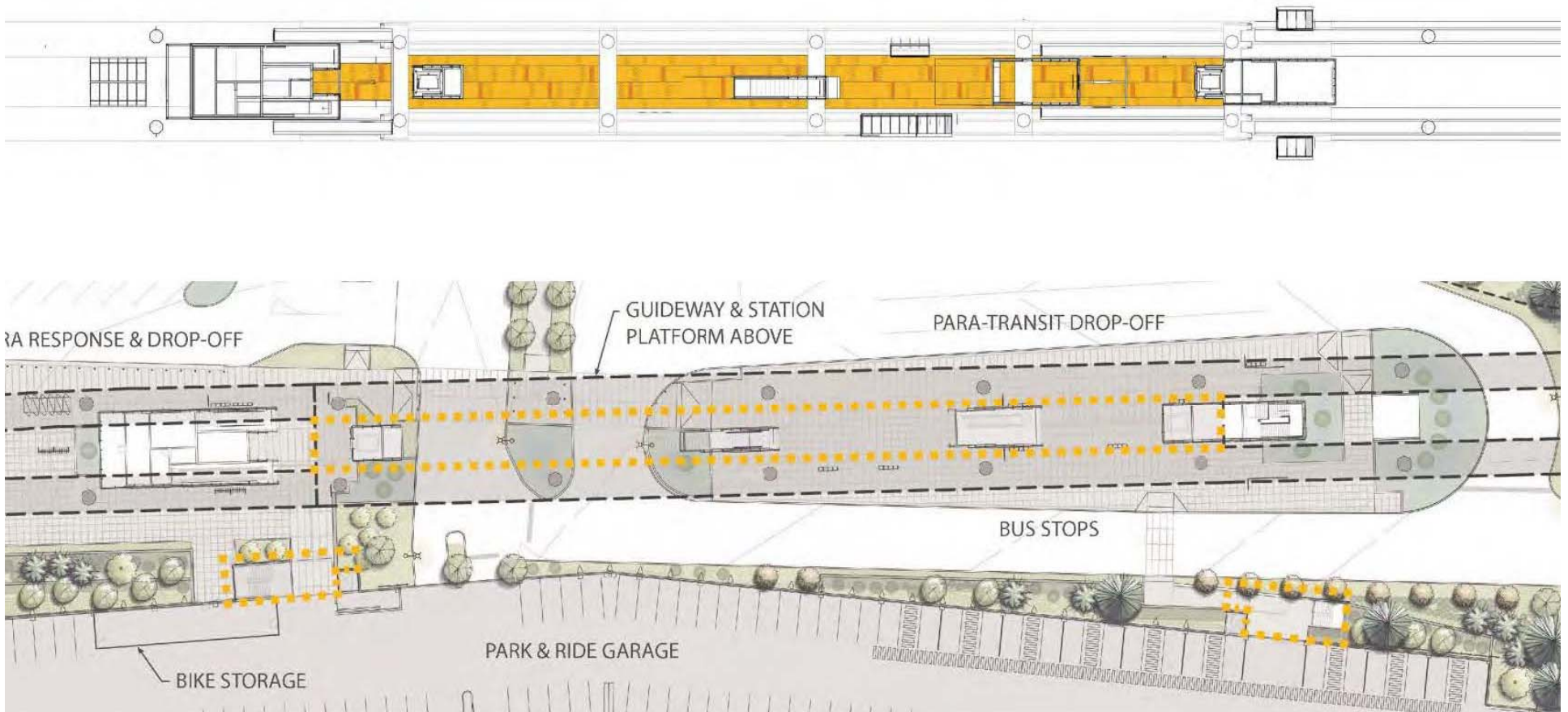


LEVEL 3 PLAN - GARAGE



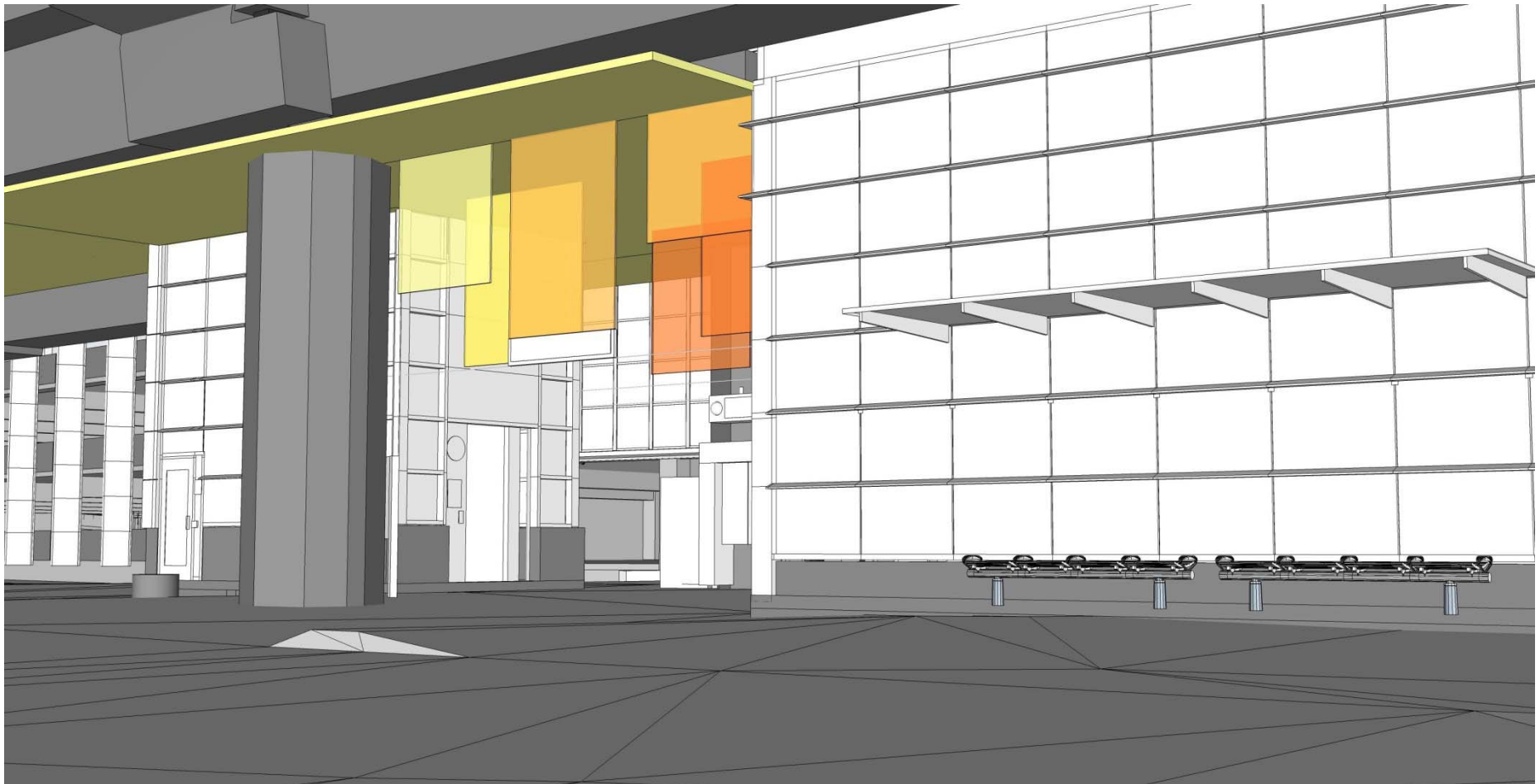
ROOF PLAN - GARAGE

Station Ceiling Color Concept



COLOR AND TEXTURE

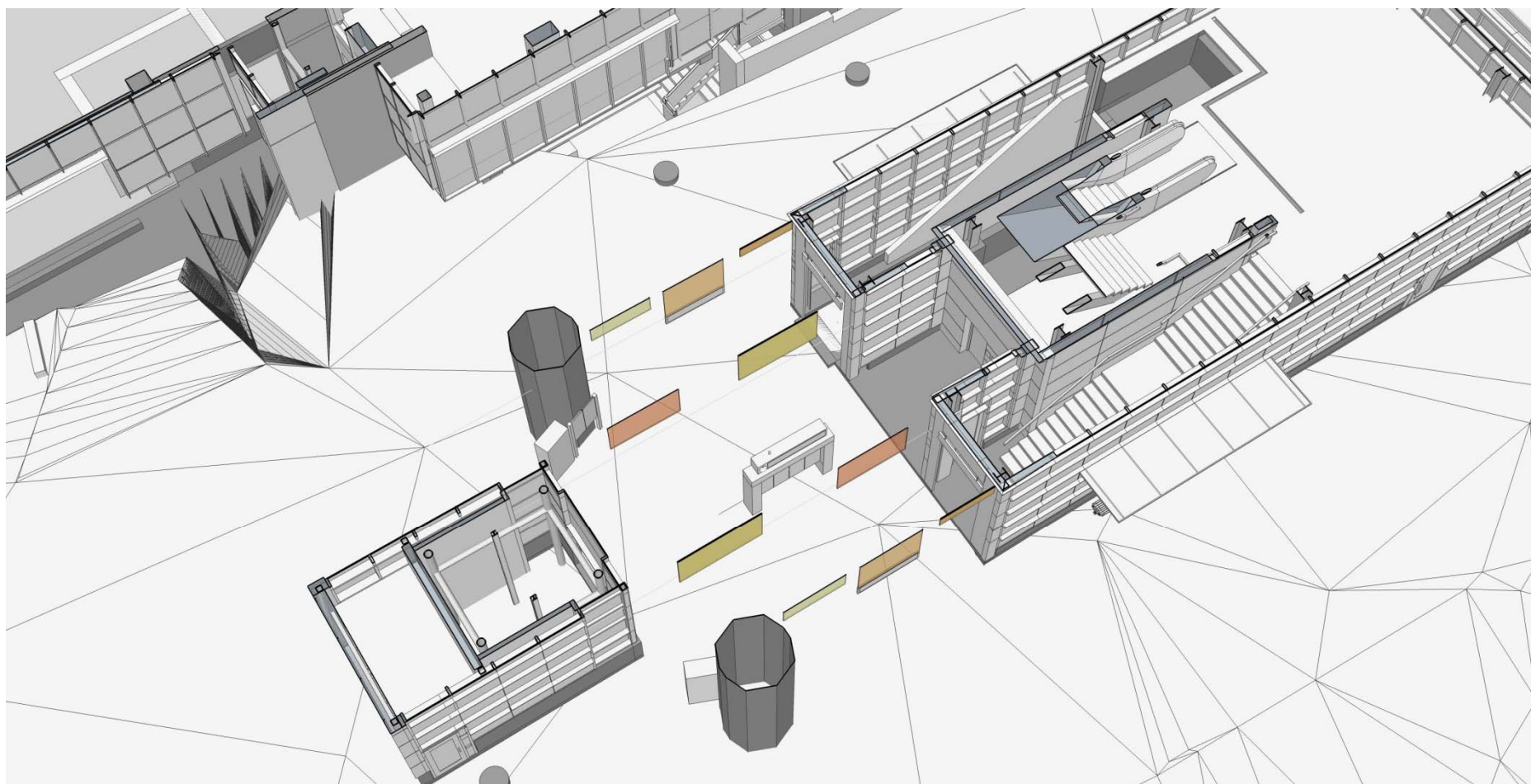
S. Entry “Banners”



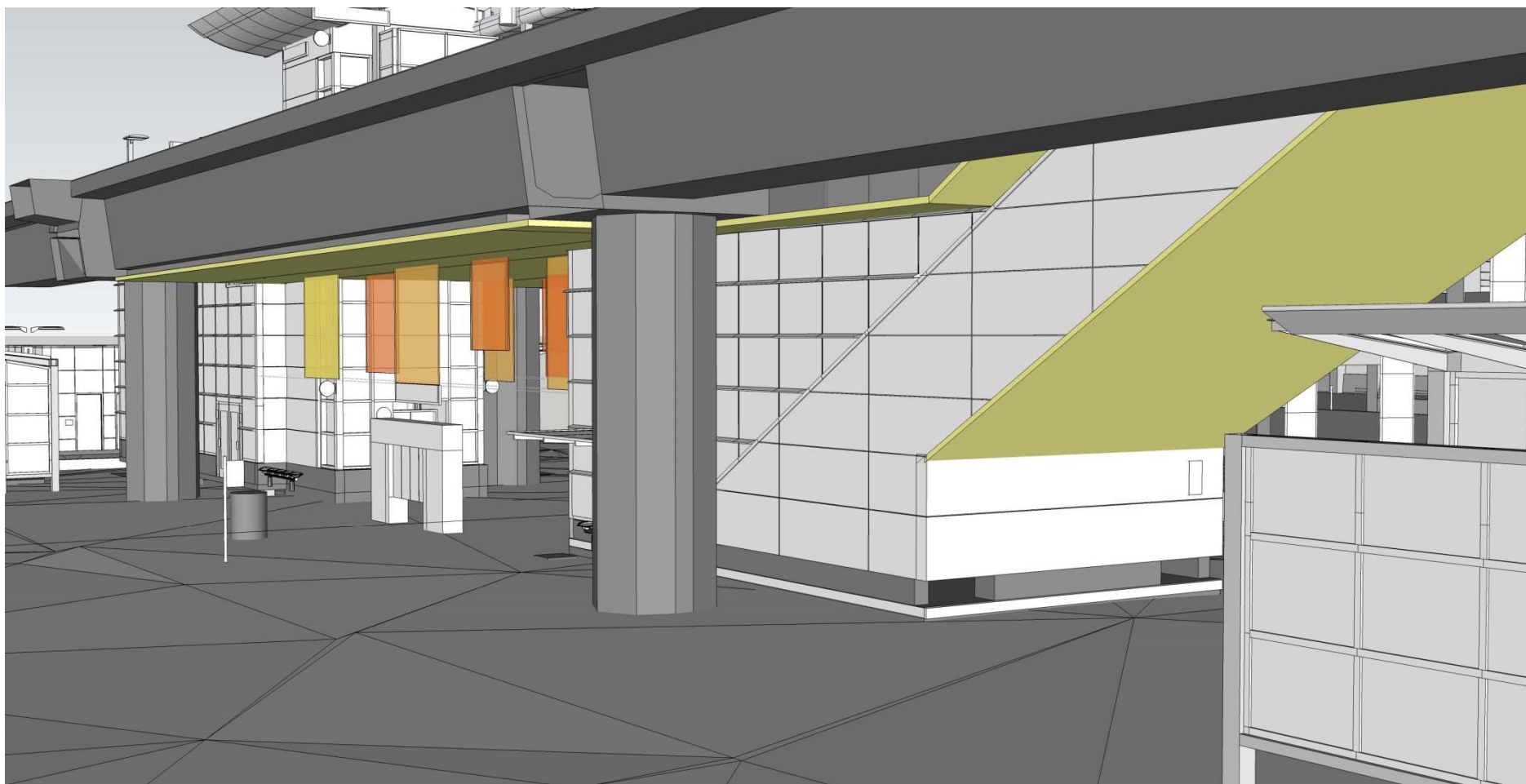
S. Entry “Banners”



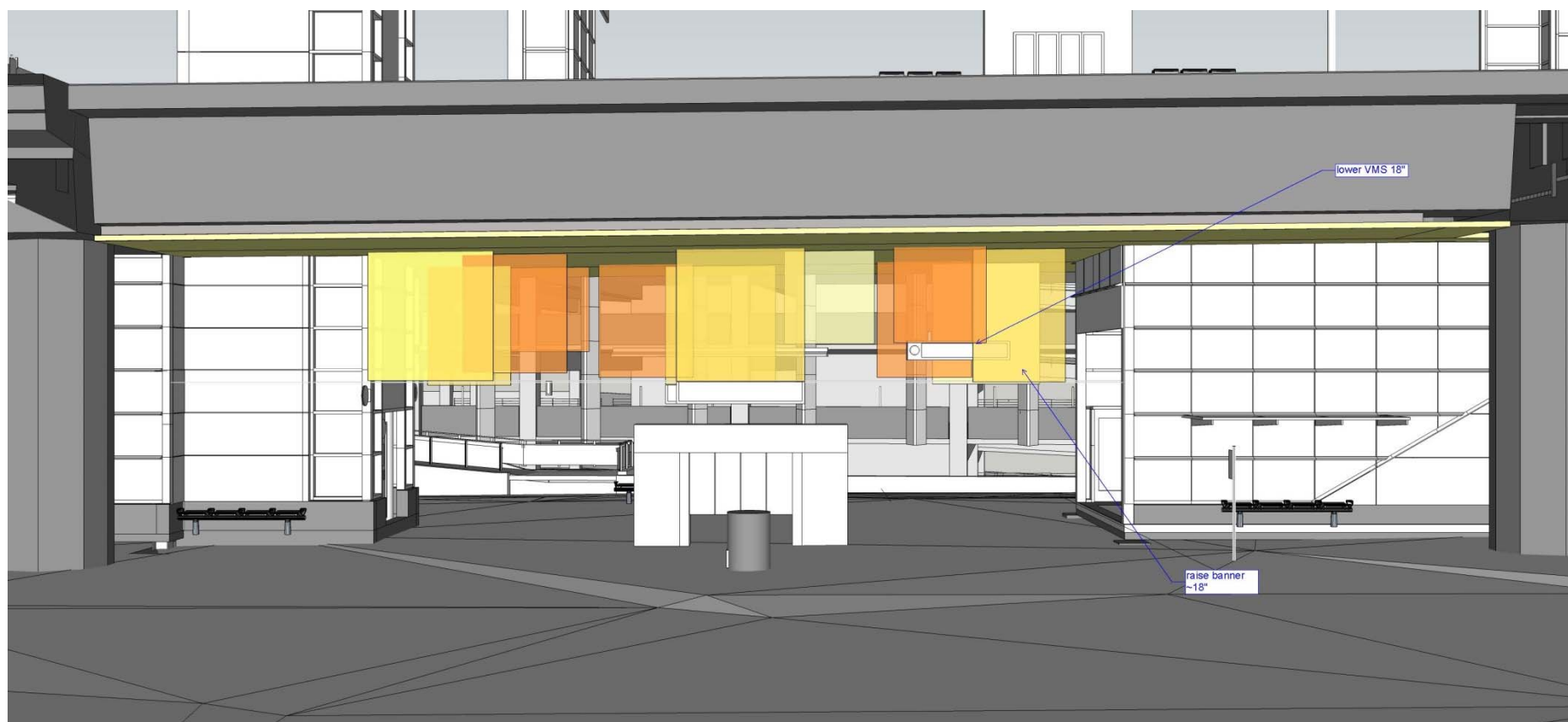
S. Entry “Banners”



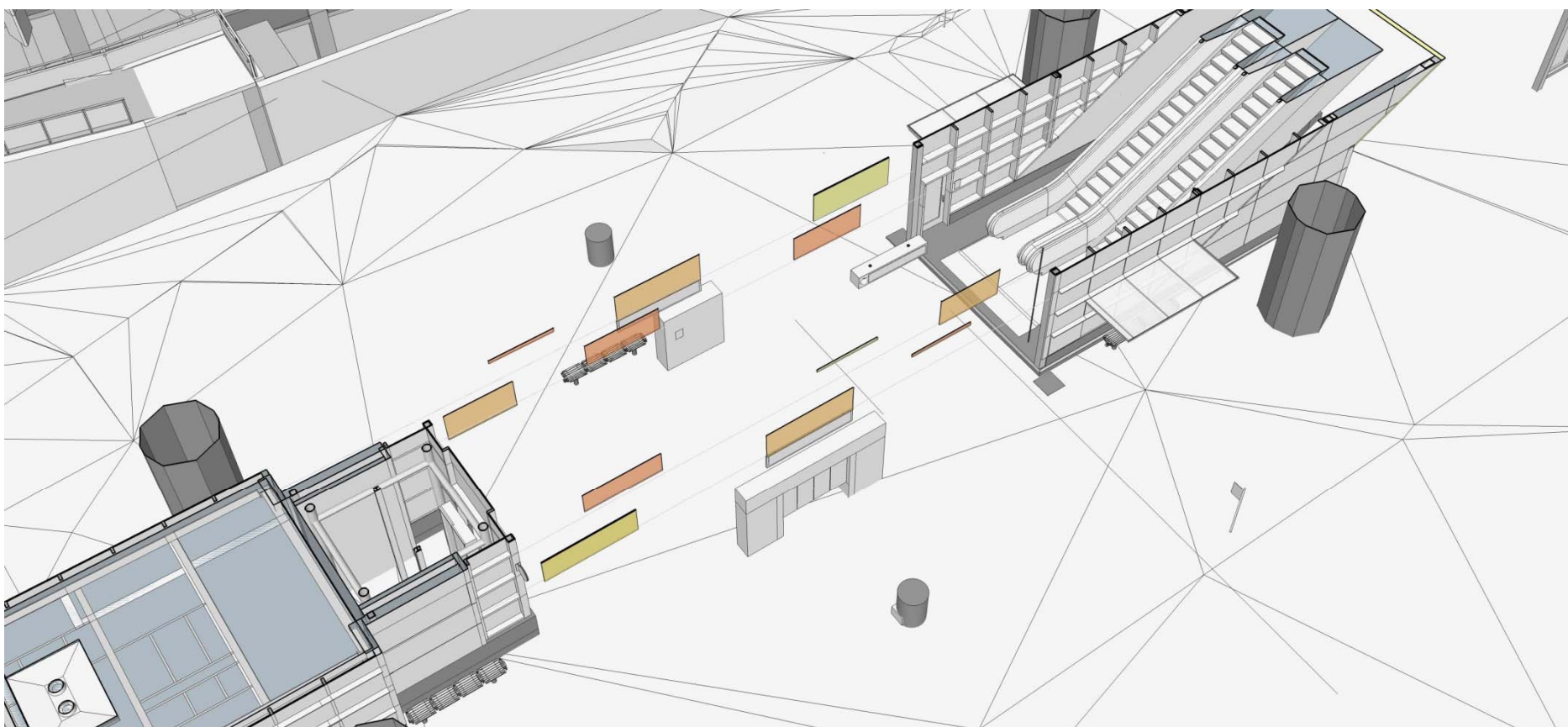
N. Entry “Banners”



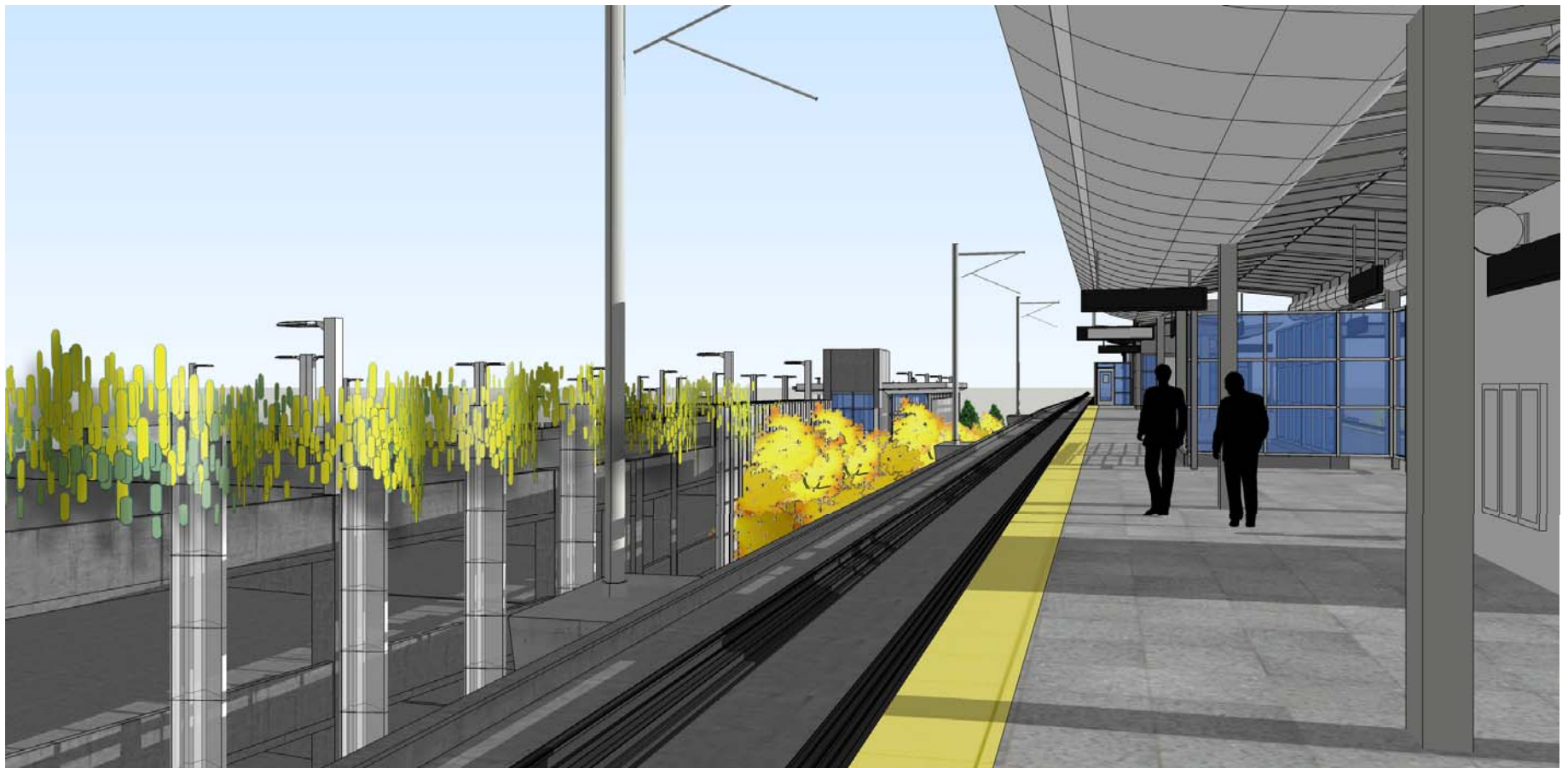
N. Entry “Banners”



N. Entry “Banners”



Katy Stone – Garage Front

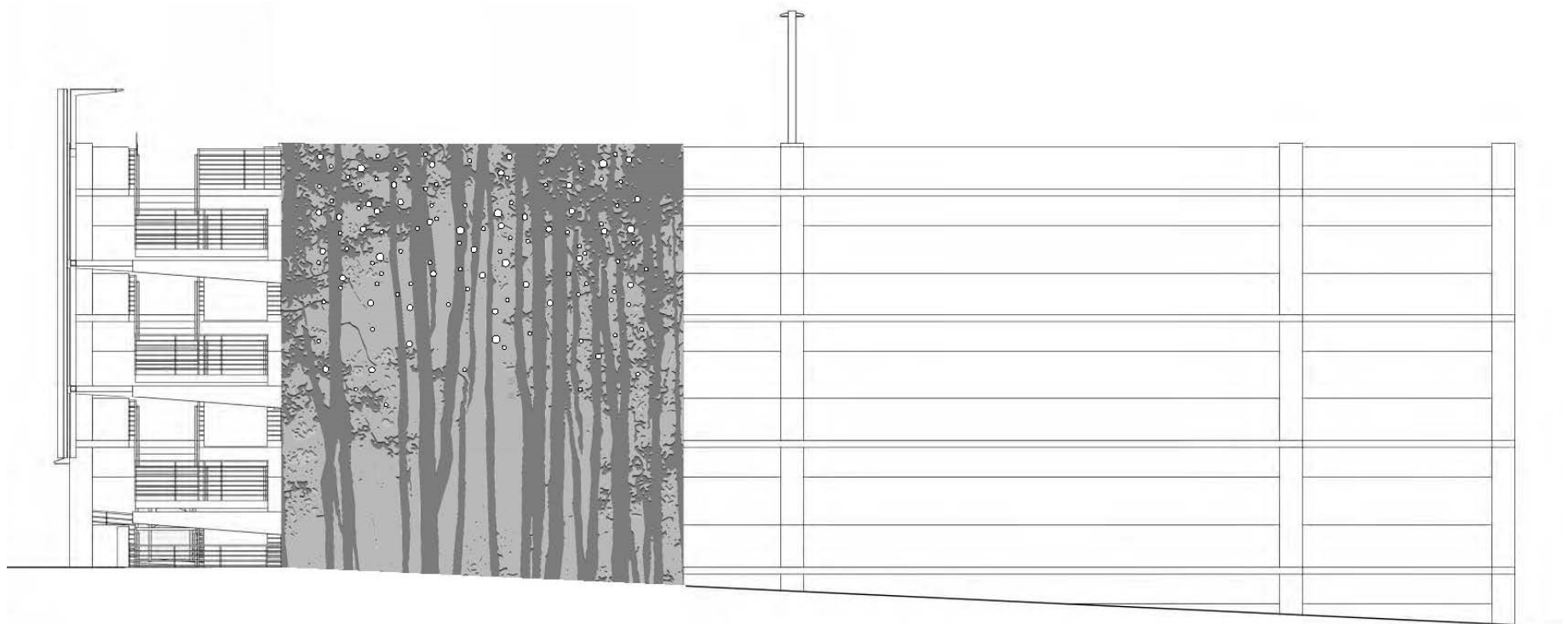


Concrete Wall Formwork Concepts



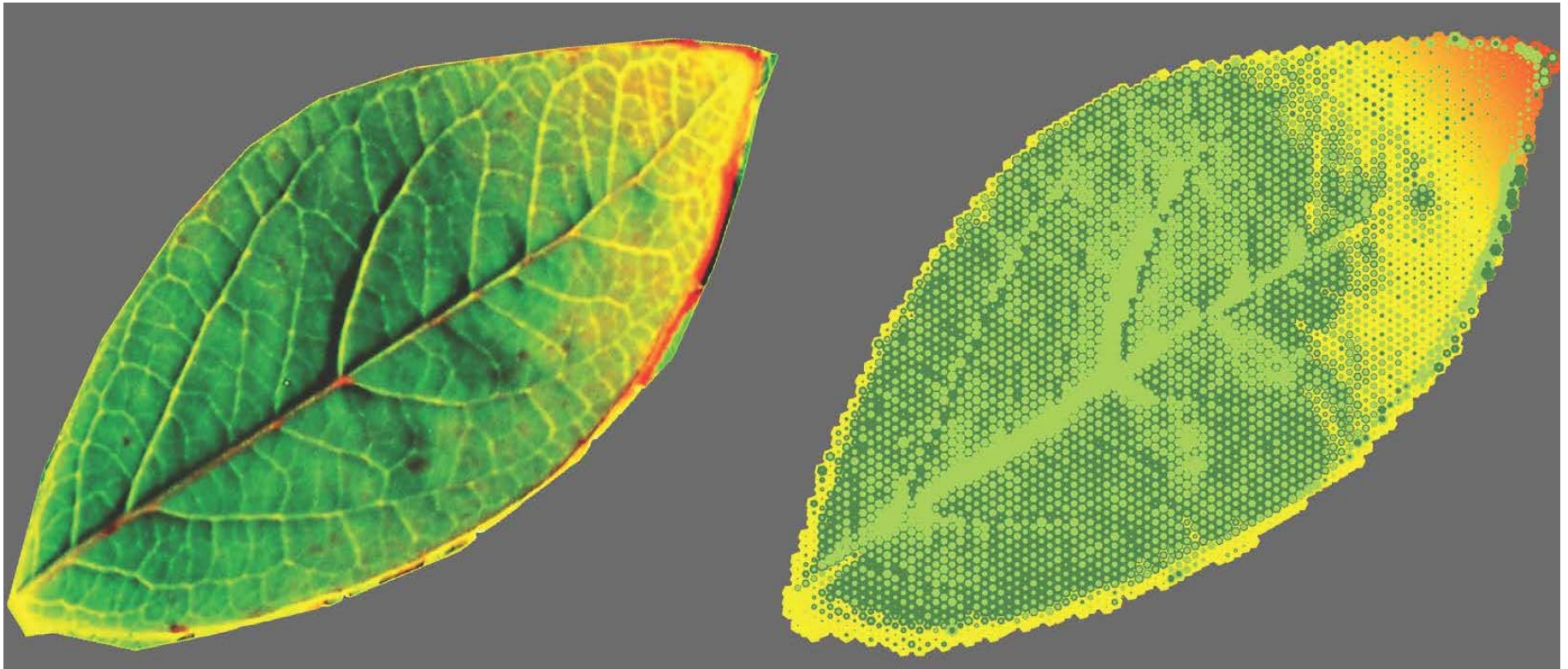
PATTERNED CONCRETE

Concrete Wall Formwork Concepts



PATTERNED CONCRETE - SOUTH SHEAR WALL

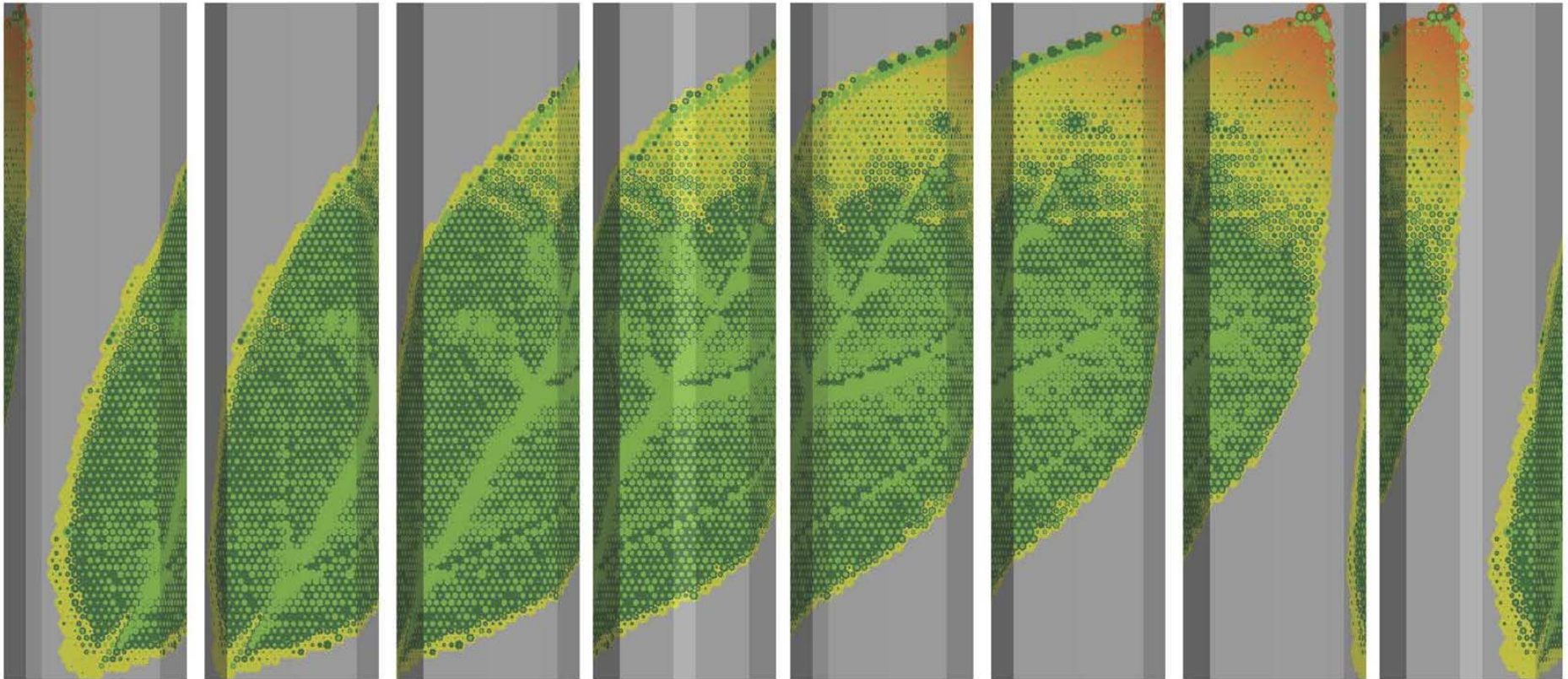
V. Scuri - Station Column Inspiration / Pattern



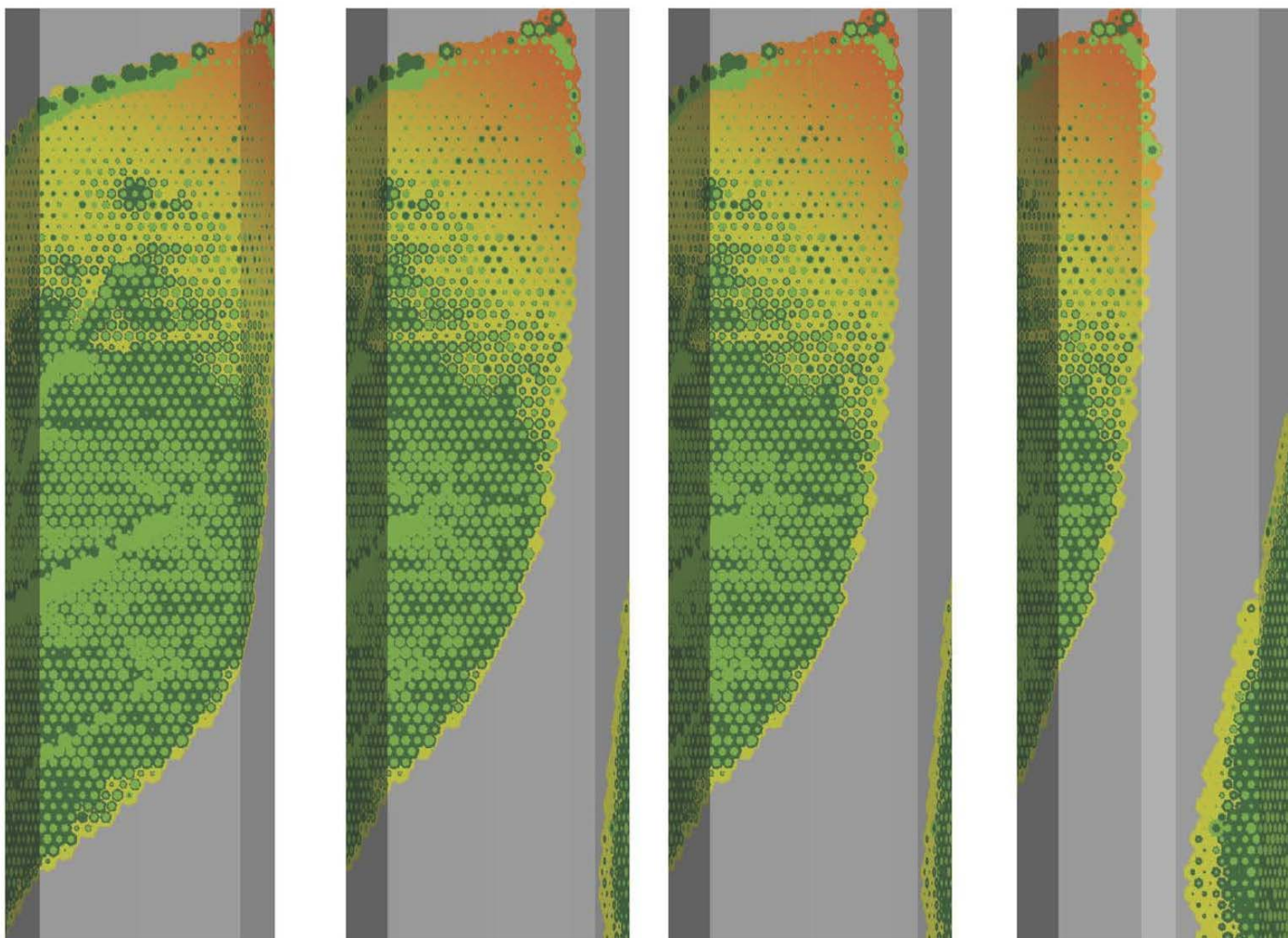
V. Scuri - Station Columns



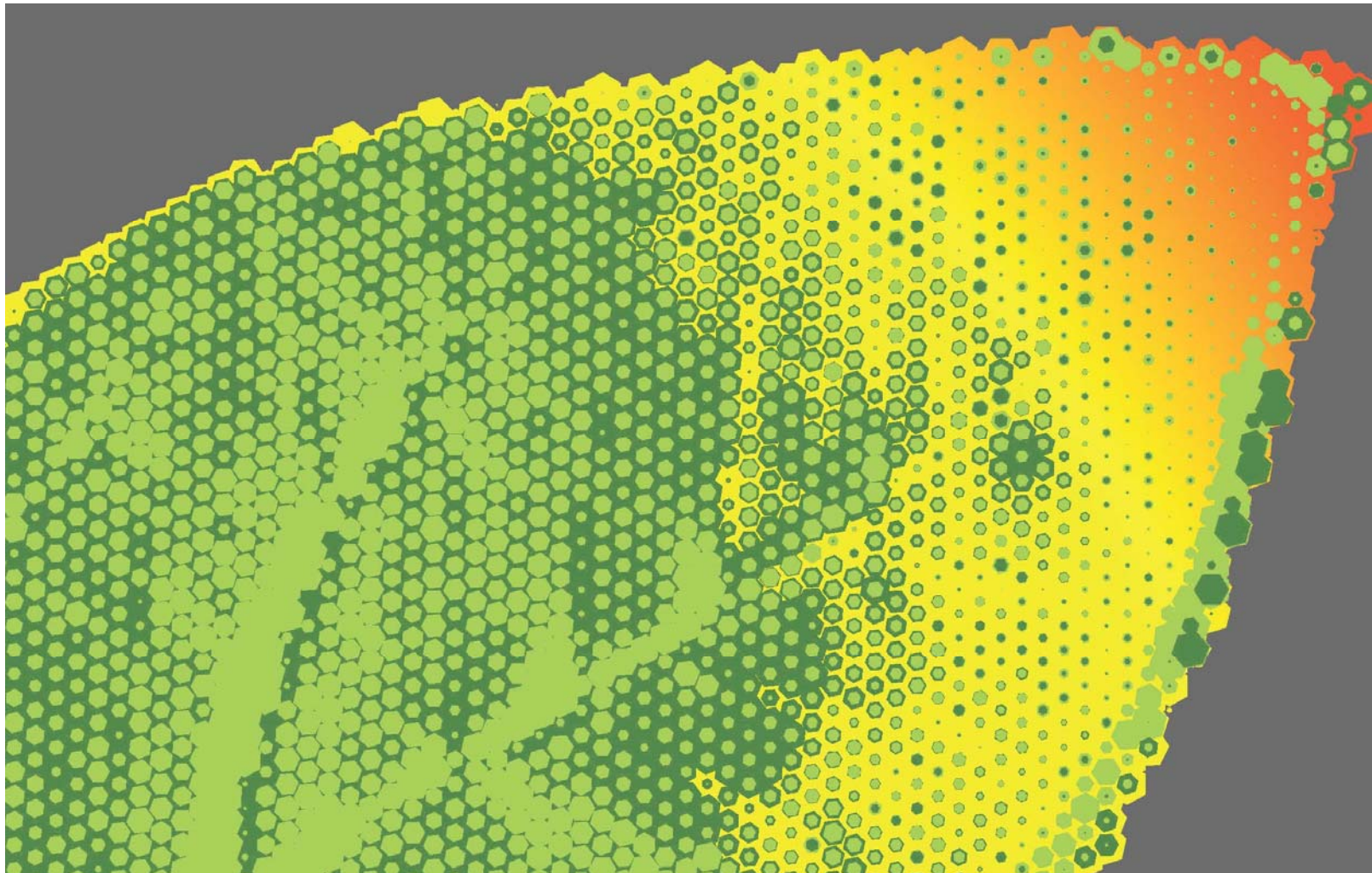
V. Scuri - Station Column Wrap



V. Scuri - Station Column



V. Scuri - Station Column Close Up



SOUTH BELLEVUE STATION - GARAGE AND STATION PLATFORM RENDERINGS

EAST LINK EXTENSION



NOV. 2014

S. PARKING ENTRY VIEW

SOUTH BELLEVUE STATION - PERSPECTIVE NORTH ENTRY
EAST LINK EXTENSION

60 % Design, Feb. 2014



FEB. 2014

SOUTH BELLEVUE STATION - GARAGE AND STATION PLATFORM RENDERINGS

EAST LINK EXTENSION



NOV. 2014

BUS PLATFORM VIEW

SOUTH BELLEVUE STATION - GARAGE AND STATION PLATFORM RENDERINGS

EAST LINK EXTENSION

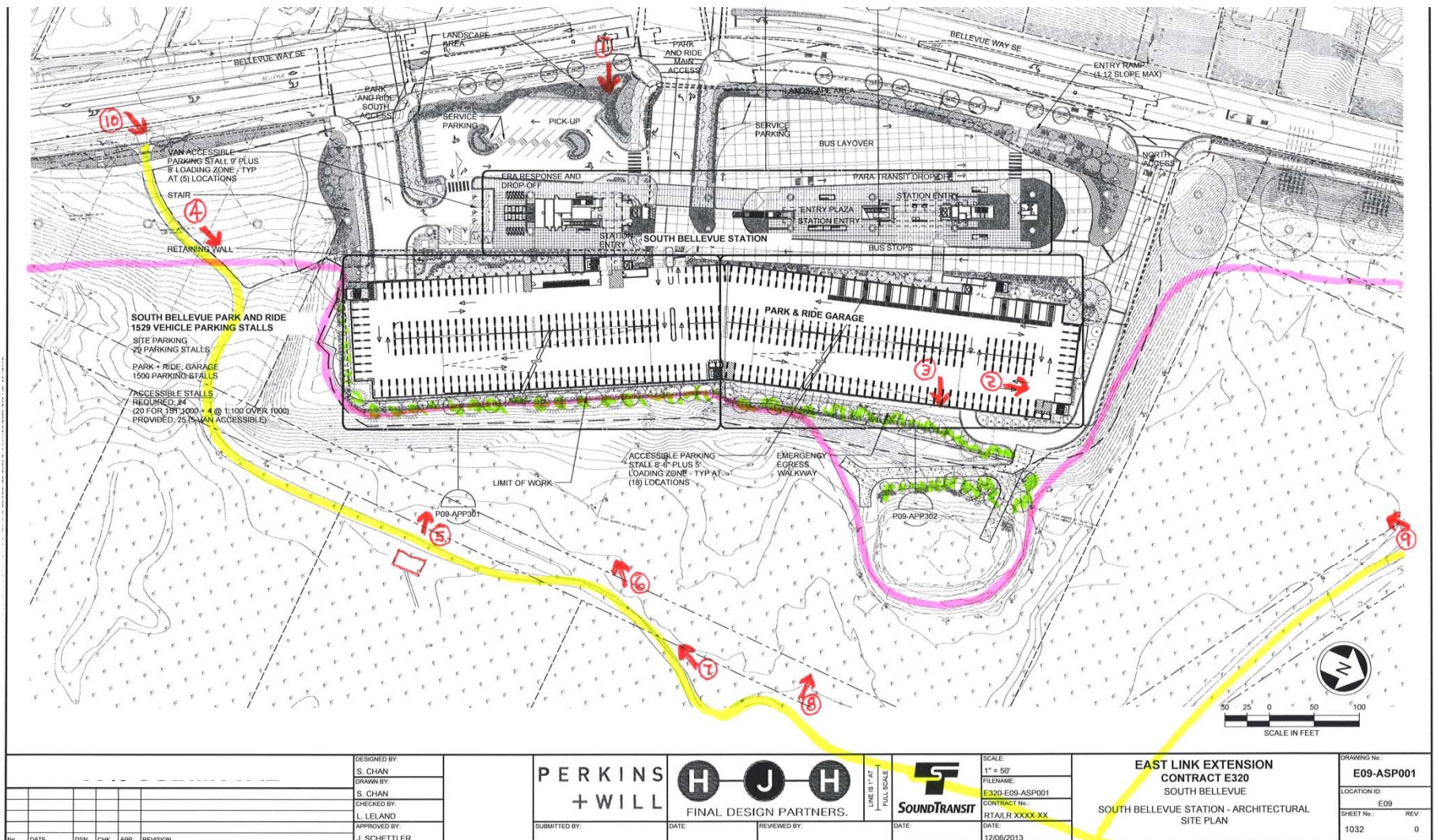


NOV. 2014

PLATFORM VIEW TO SOUTH



S. Bellevue Construction Zone



2 Existing Trees – NE Corner



3 Existing Trees – NE Drainage Detention



5 Existing Trees – East, From Park



6 Existing Trees – East, From Park



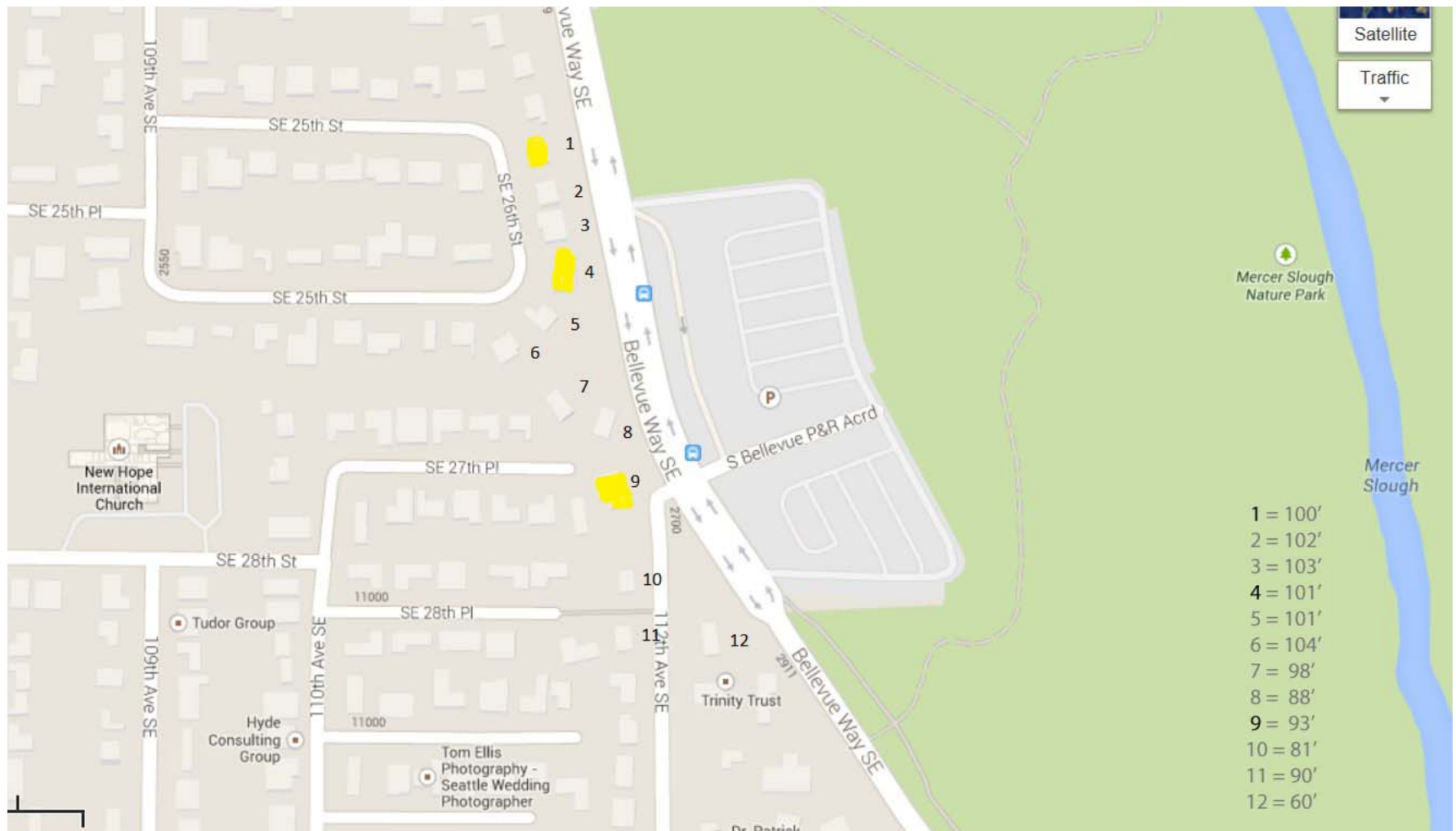
9 Existing Trees – North, From Park



10 Existing Trees – South, From Street

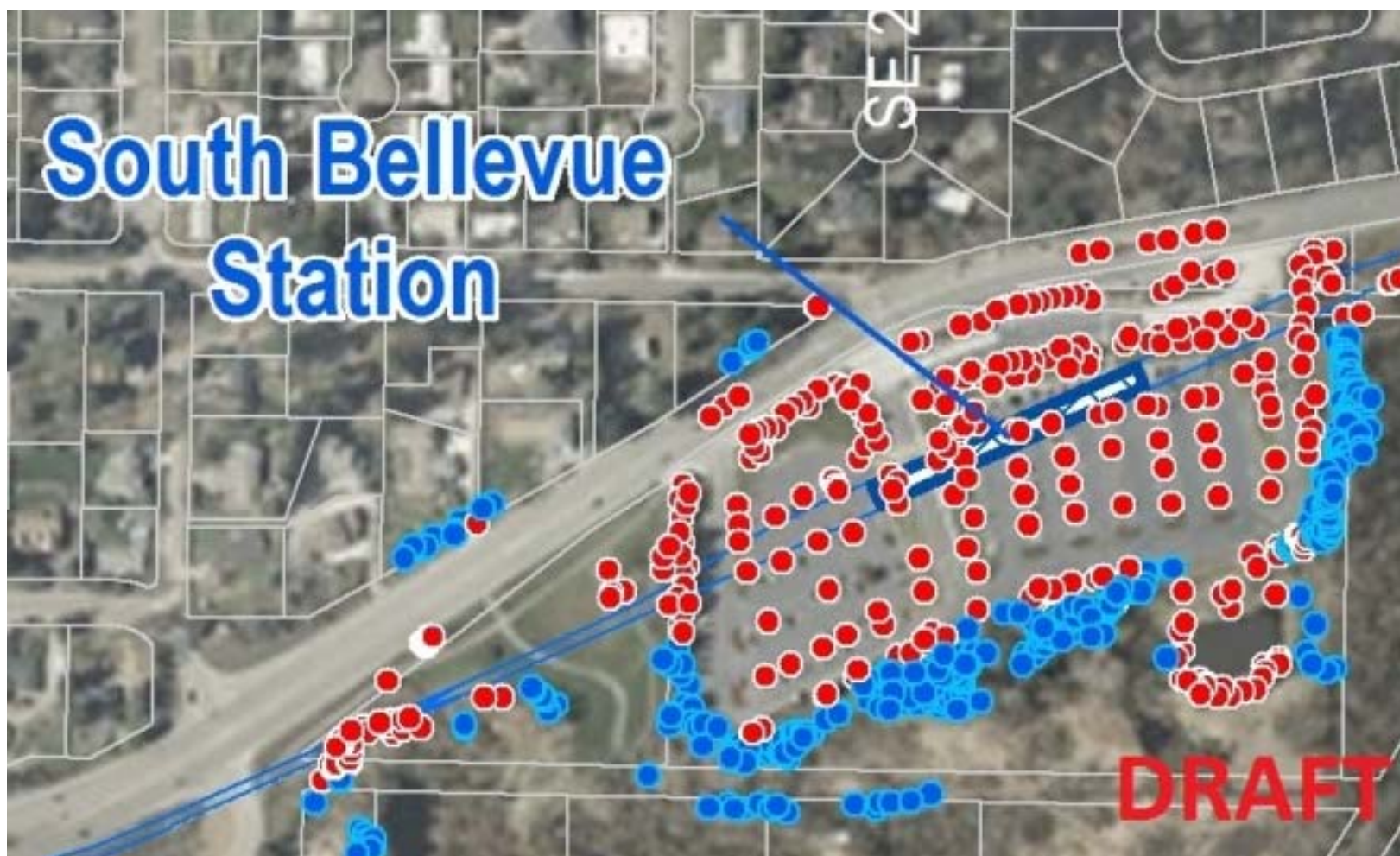


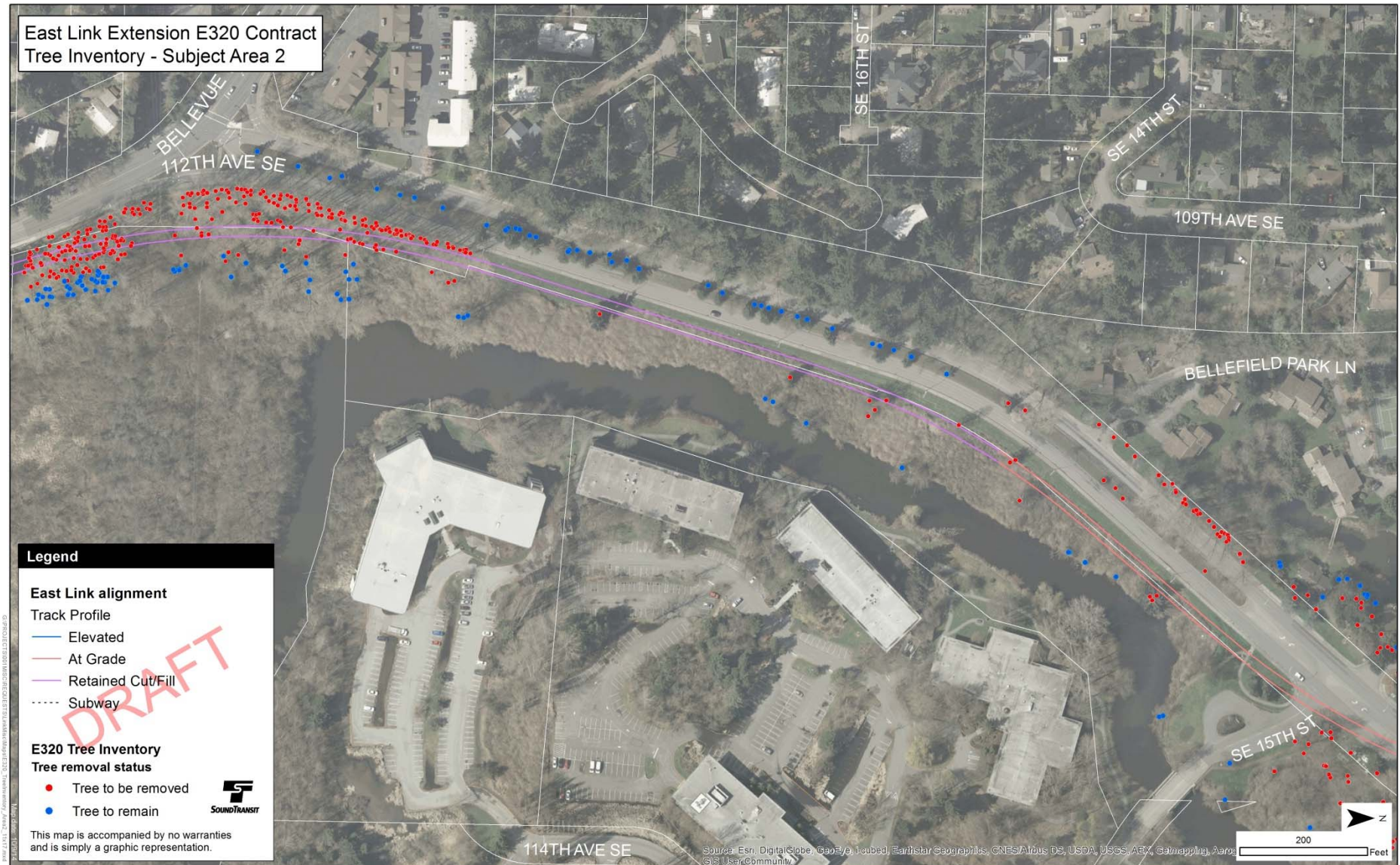
Hillside Houses View Map

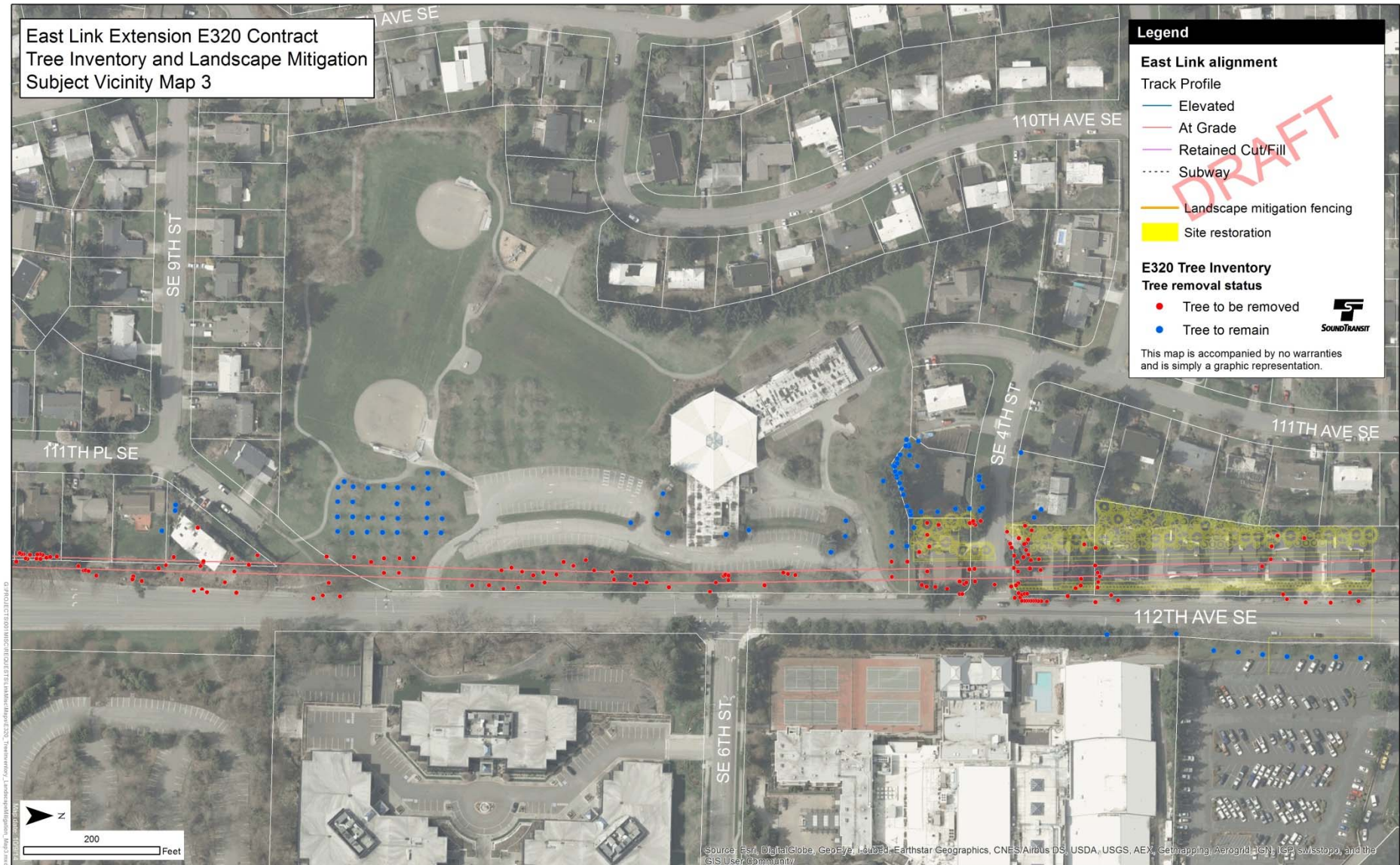




South Bellevue Station







■