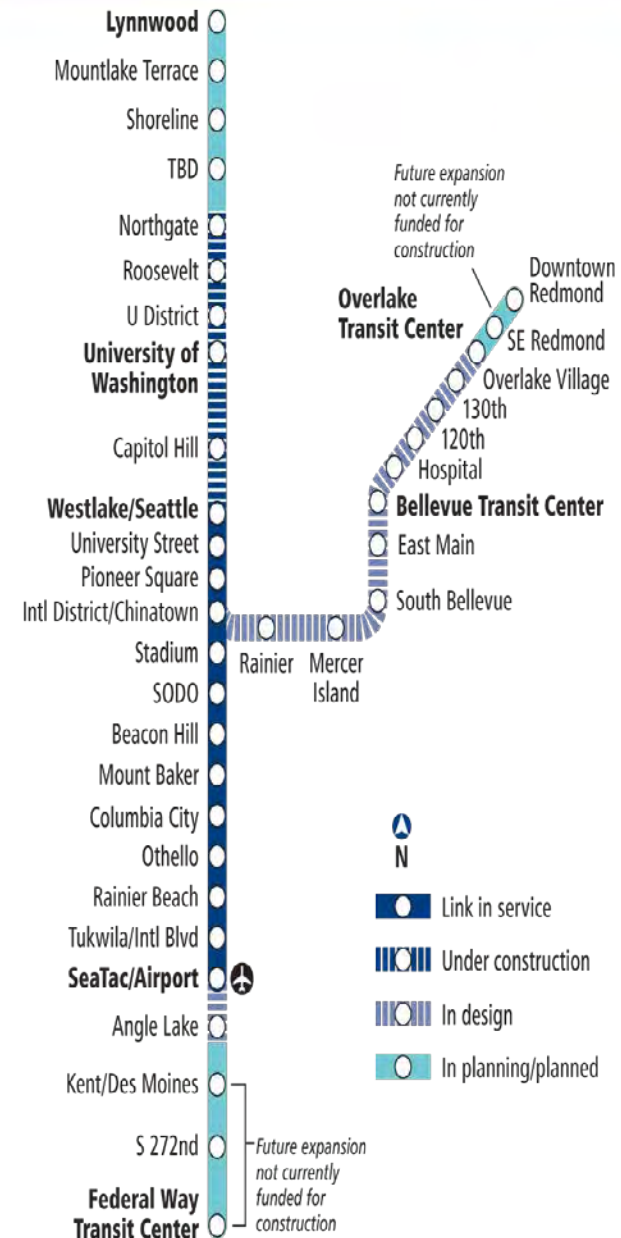


# East Link Extension Bellevue Citizen Advisory Committee

October 24, 2013

# Link light rail system

- 16 miles of light rail with 13 stations currently in service
- University & S. 200<sup>th</sup> Link Extensions under construction; open 2016
- ST2 Plan funded extensions to Overlake, South King County, and Lynnwood
- 50+ mile system



# East Link overview

**Length:** 14 miles

**Rider projection:** 50,000 daily by 2030

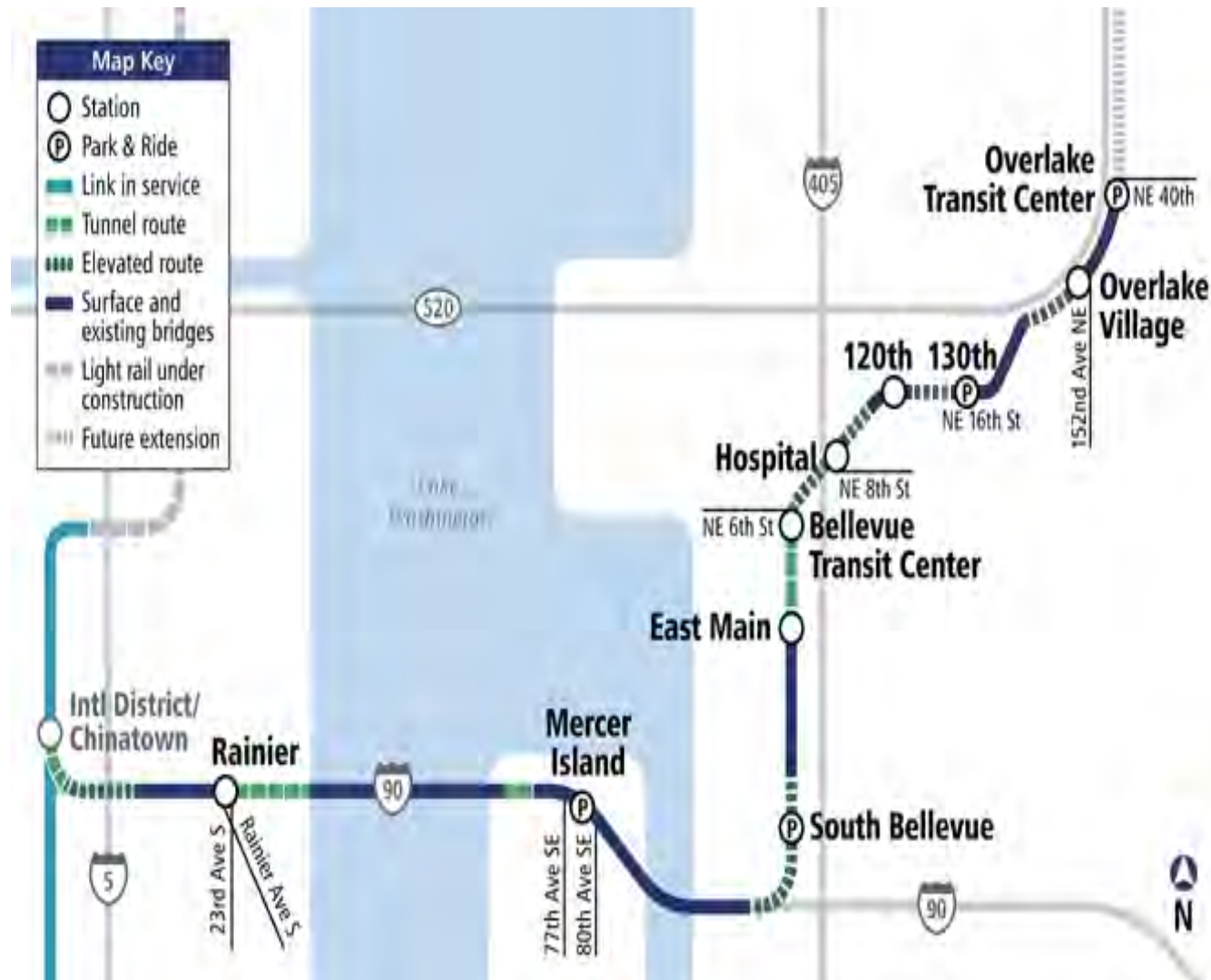
**Start of Service:** Targeted 2023

**Bellevue Transit Center Station:**

Ride Times:

- University of Washington- 30 mins
- Overlake Transit Center-10 mins
- Airport-55 mins

Rider Projections: 6,600 daily by 2030



# What you can expect during final design

## Design milestones

100 percent design

Final design kick-off  
(Spring 2013)

60 percent design  
(Second half of 2013)

90 percent design  
(2014)

Start  
construction  
(targeted  
2015)

- Station design and naming outreach begins
- Lead Artist joins design team from *STart*
- Ancillary structures located

- Updated construction staging and sequencing plans developed
- Interagency coordination on concurrent planning and construction efforts
- Sound Transit Board identifies permanent station name



# Introduction to Link Light Rail

# Link Light Rail

- Light Rail is versatile: operates at-grade, elevated, in trenches, or in tunnels
- Light Rail is electrically powered, vehicles run on railroad tracks
- Power delivered by Overhead Contact System (OCS)
- Link stations are designed for up to 4 vehicles (380' platforms)

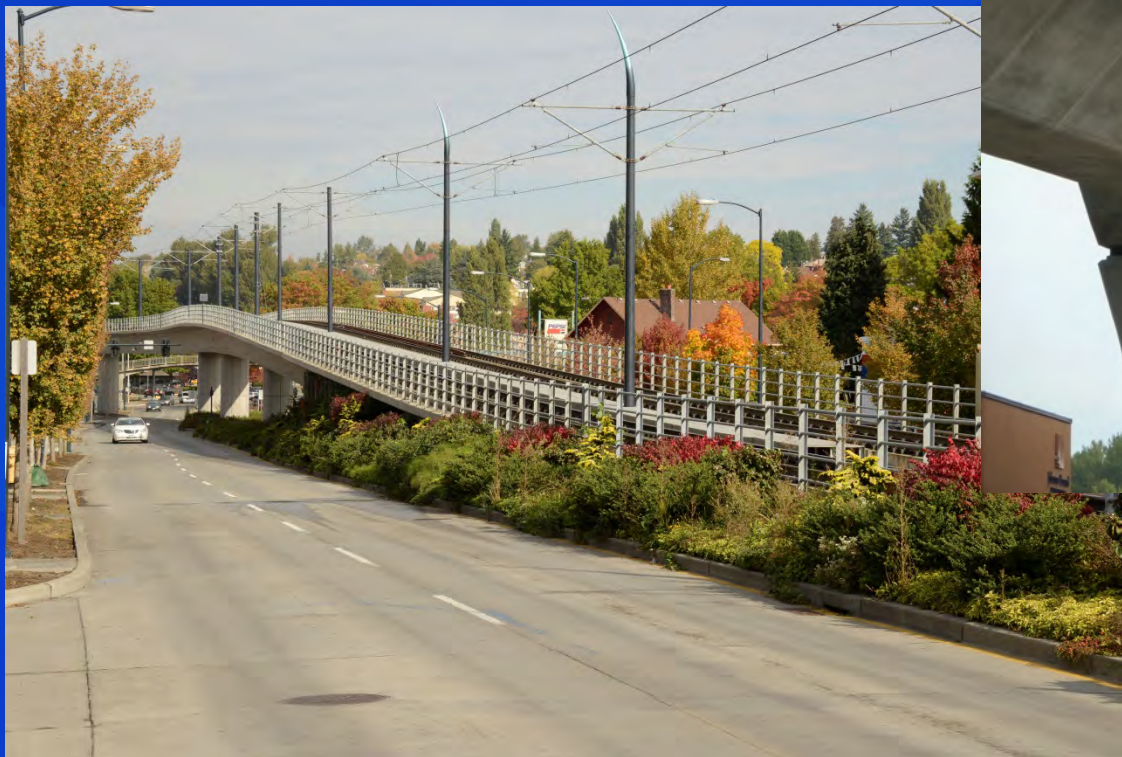




# At Grade



# Elevated





# Tunnel Portal



# Link Light Rail Basics

- Traction Power substations (TPSS)
- Signals buildings
- Communications buildings
- Overhead Contact System (OCS)





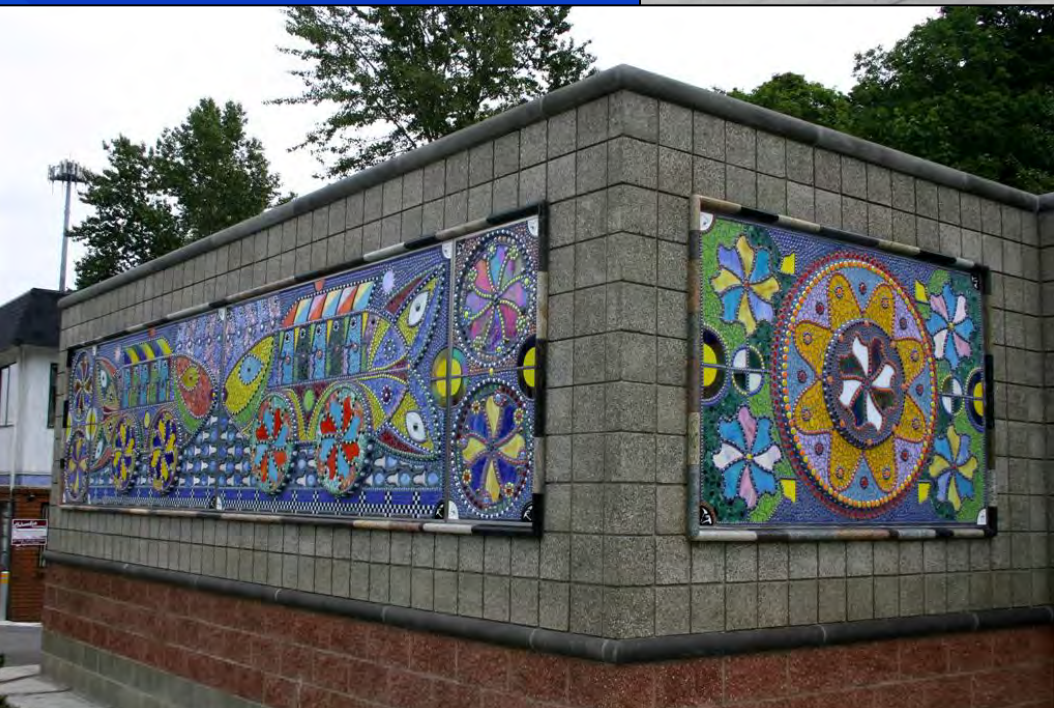
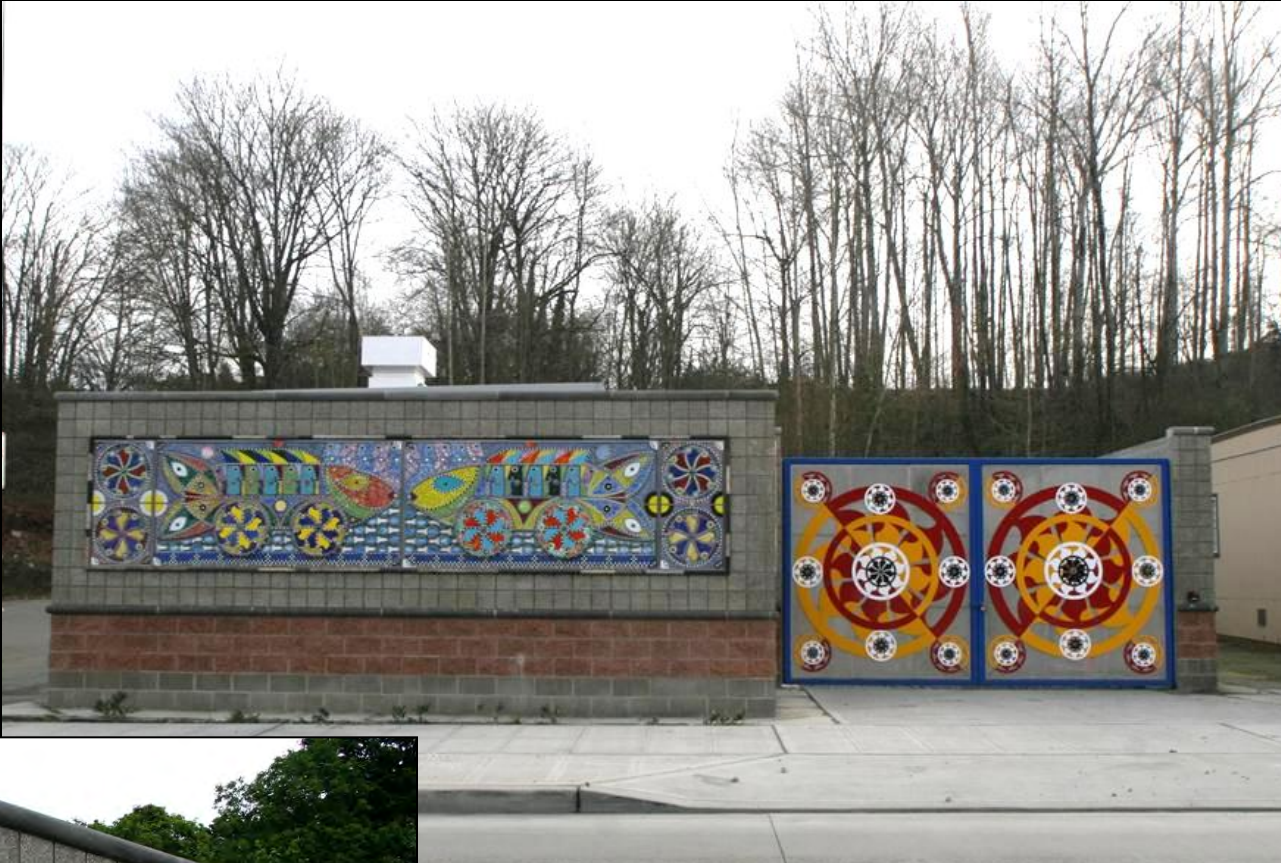
# TPSS (No Screening)















06.24.2008 15:12



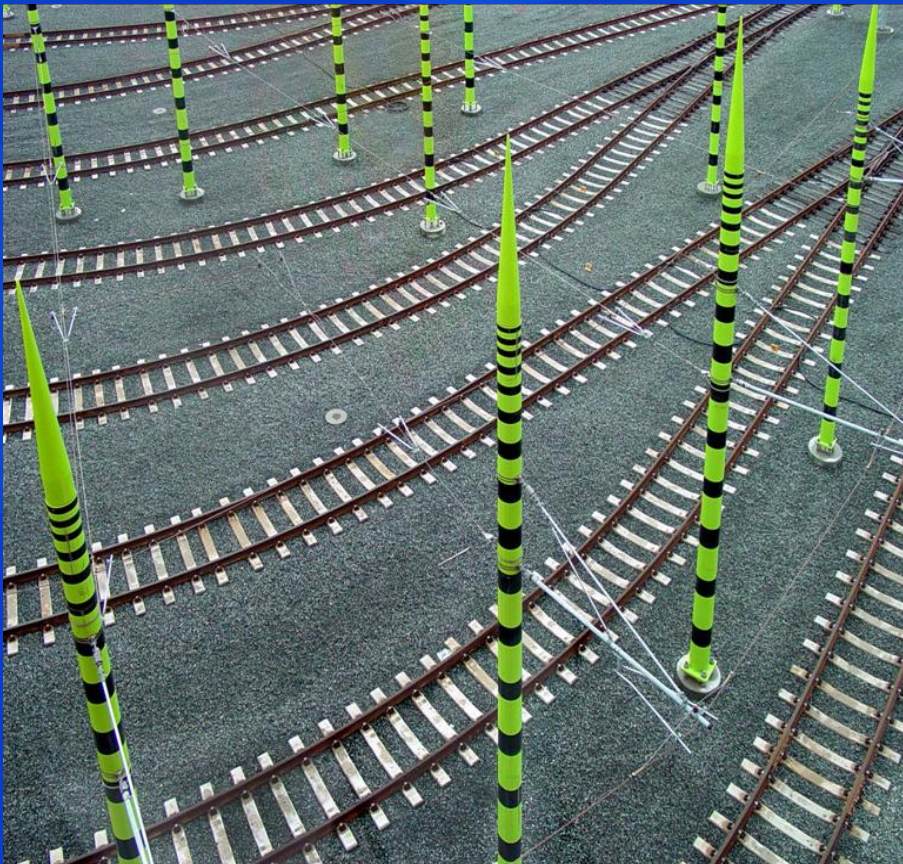
# Signals Bungalow





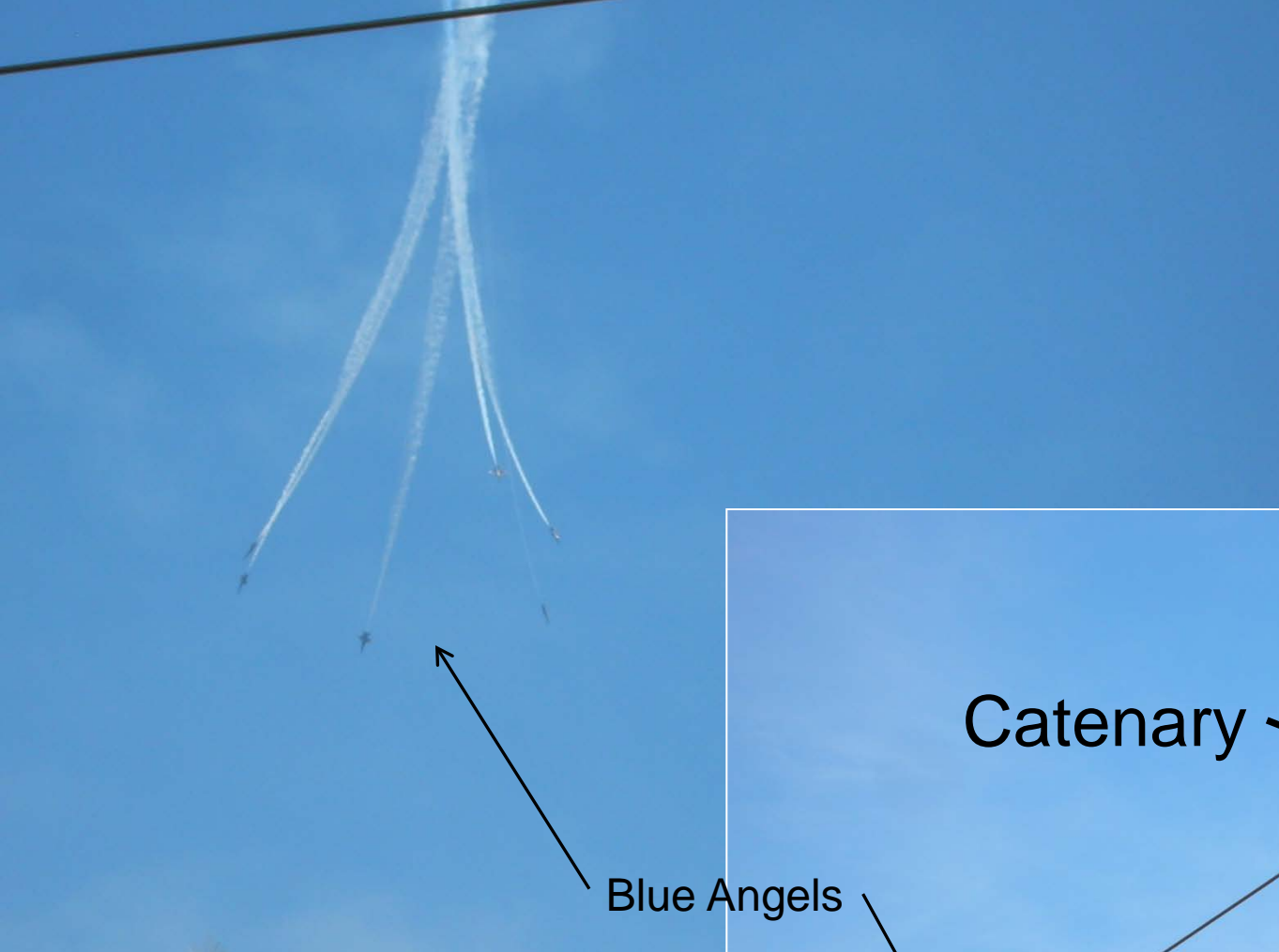
# OCS

## Overhead Contact (Catenary) System

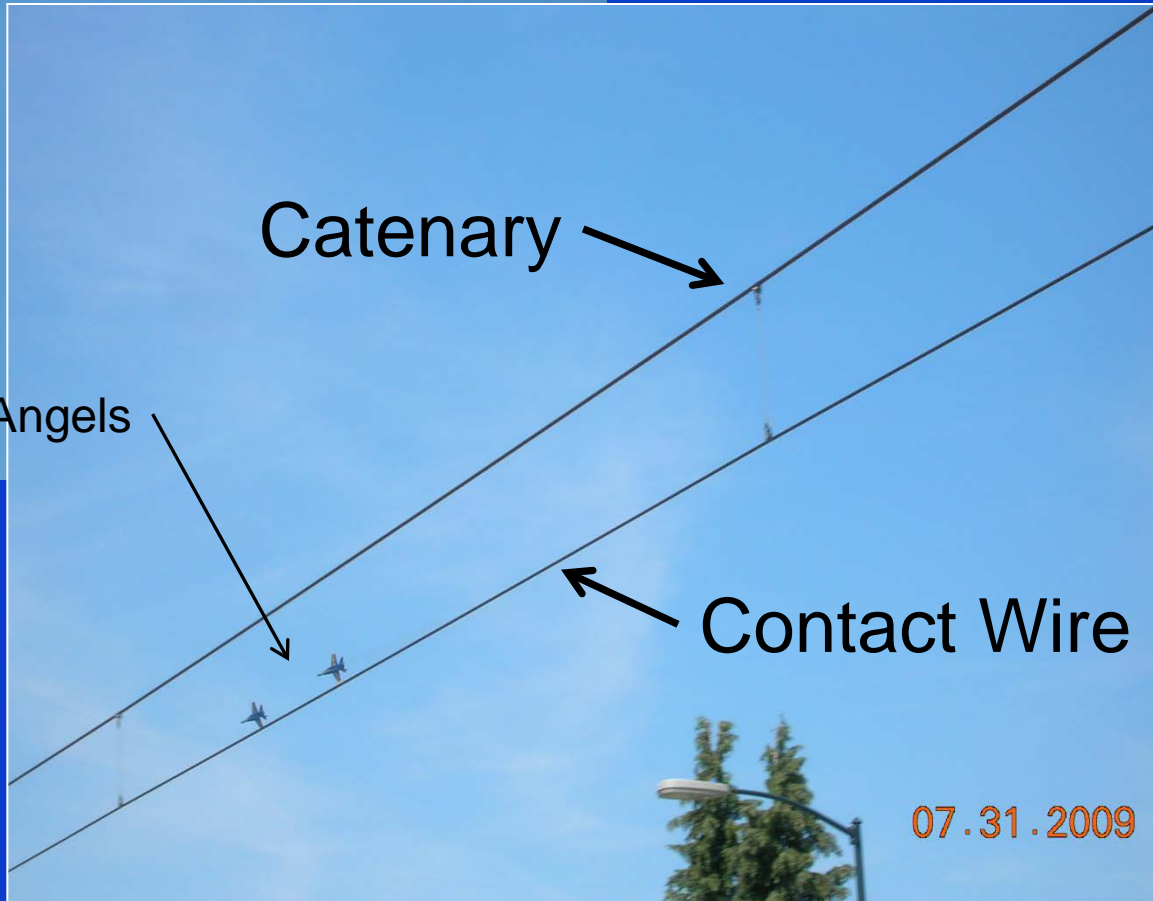


10.30.2008 14:49





Blue Angels



Catenary

Contact Wire

07.31.2009

# Link Light Rail Vehicles



4 Car Trains – 380 feet





# Ped Crossings



# System-wide Elements

- Station Signage
- Tactile & Wayfinding Pavers
- Vehicles





# Paving



06.19.2008 14:13

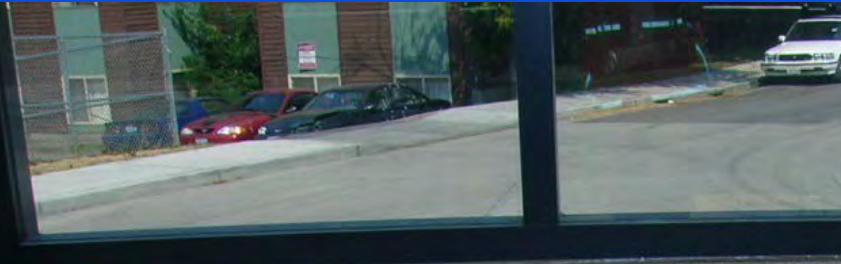


# ETELS's & PET's





# TVM's









# ORCA Card Reader

- Uncommonly known as the **Stand Alone Fare Transaction Processor – SAFTP**
- 2 per entry minimum: Architects coordinate layout and quantity based on traffic flow





# Bike Storage





# Customer Signage











SeaTac/Airport

Link

Airport Terminal  
Buses/International Blvd

01.26.2010





03.2



06.27.2009







07.10.2008 13:48



# Types of Stations





# At Grade



# Elevated



J K WALSER



# East Link overview

Length: 14 miles

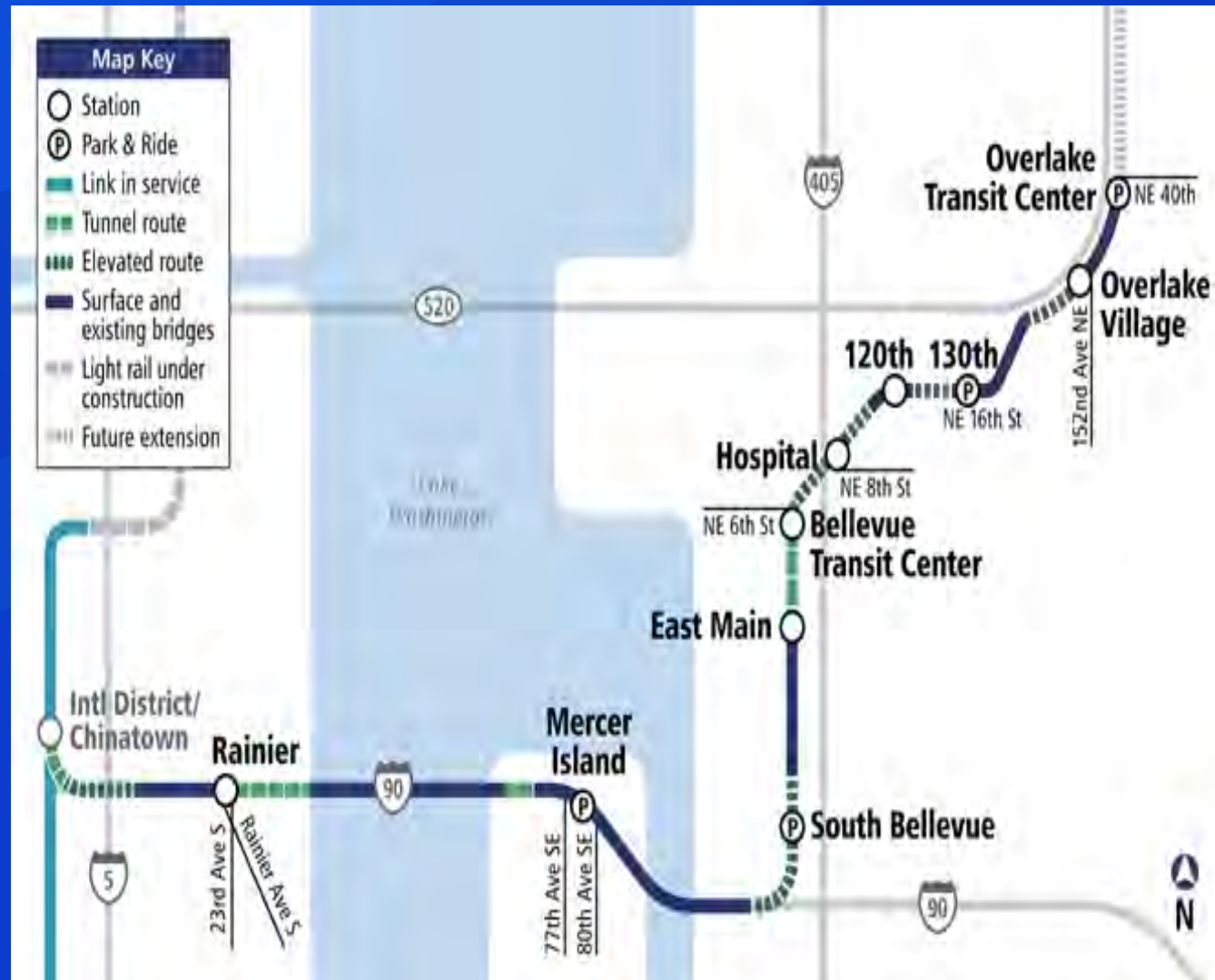
Ride times:

- Mercer Island to UW: 20 min.
- S. Bellevue to Airport: 50 min.
- Overlake Transit Center to  
Bellevue Transit Center: 10 min.

Rider projection: 50,000 daily by  
2030

Budget: \$2.8 billion (2010 \$)

Start of Service: Targeted 2023



# East Link timeline





# South Bellevue Station



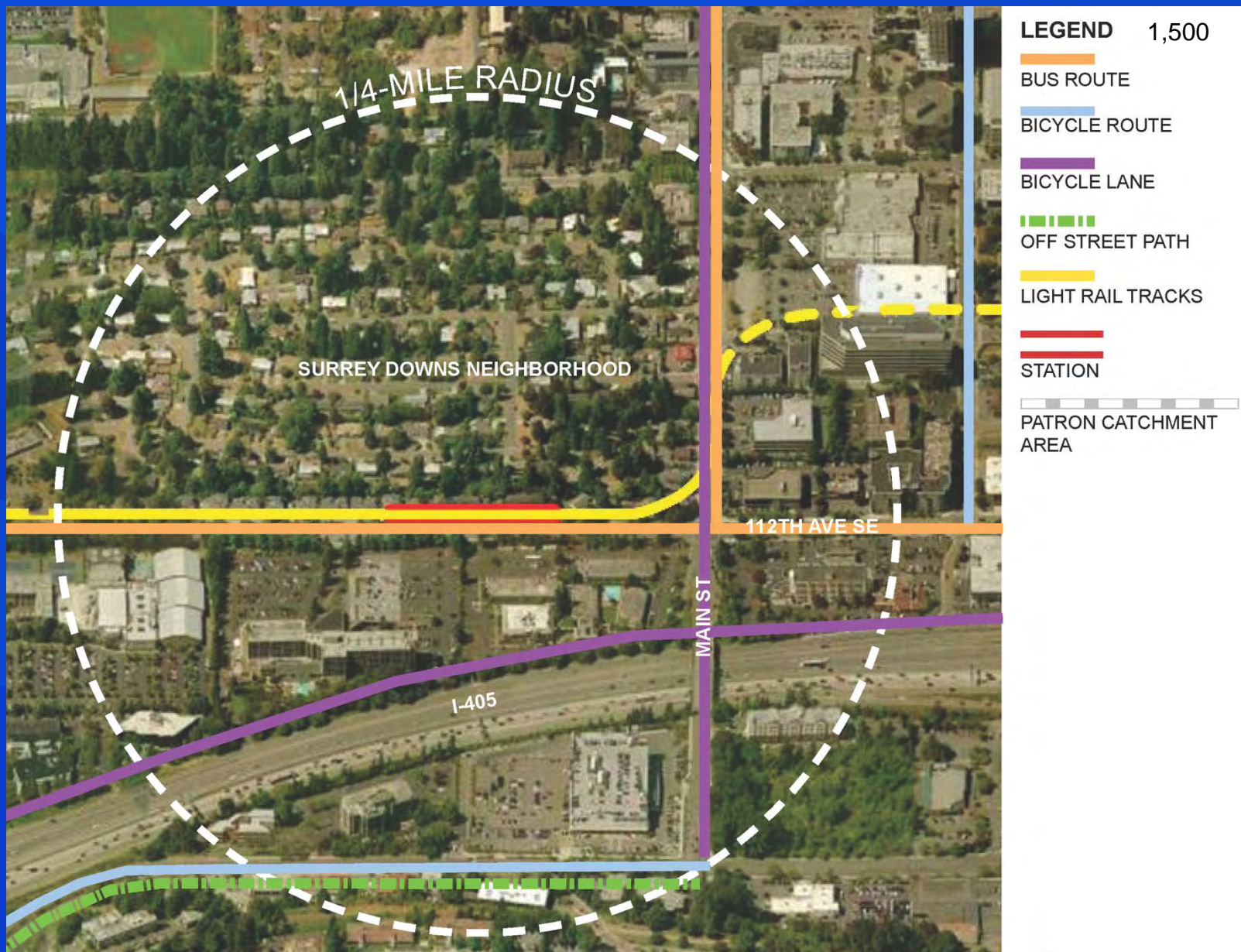


# South Bellevue Station





# East Main Station



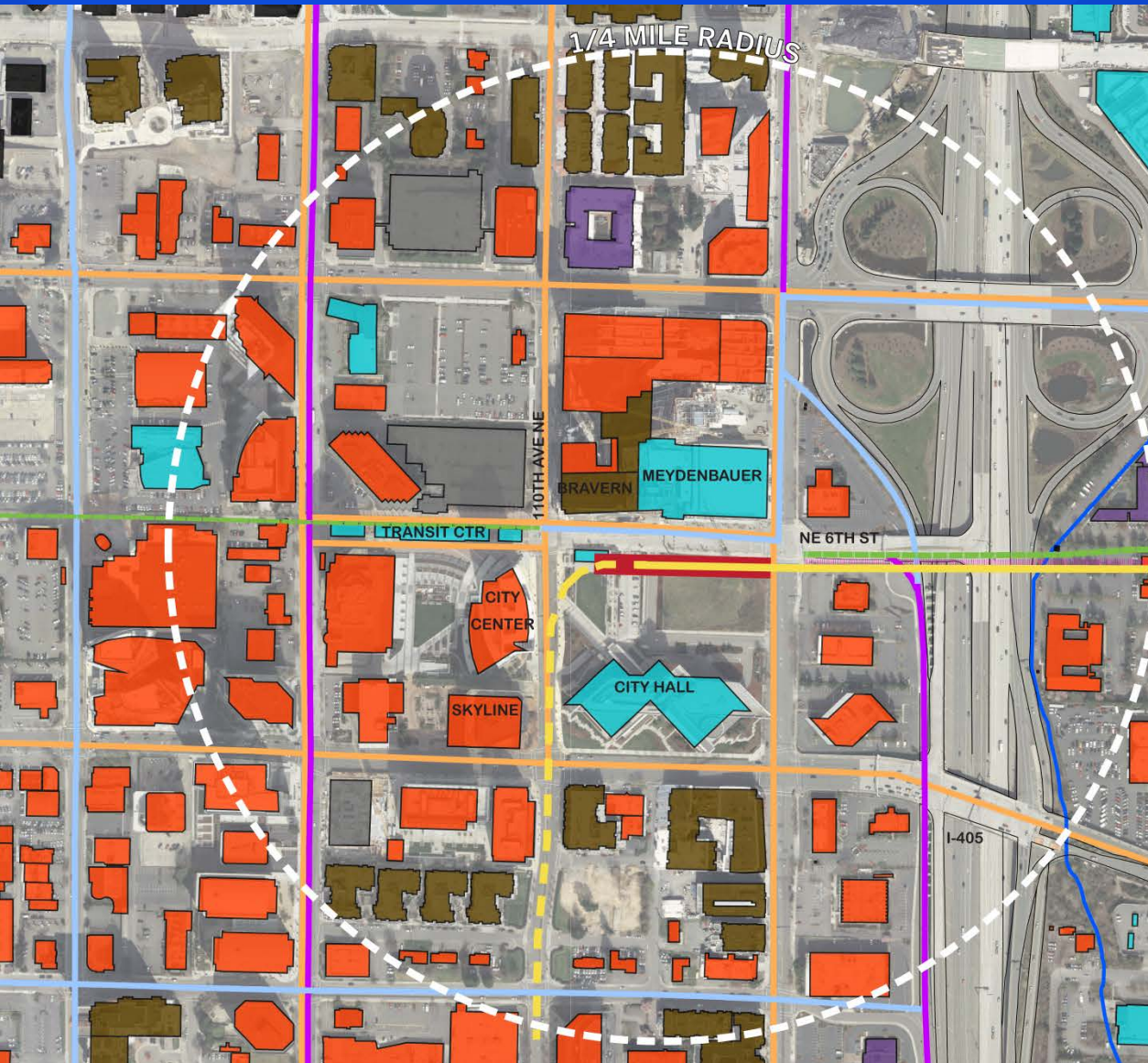


# East Main Station





# Downtown Station



**LEGEND** 6,600

BUS ROUTE

BICYCLE ROUTE

BICYCLE LANE

OFF STREET PATH

LIGHT RAIL TRACKS

STATION

PATRON CATCHMENT  
AREA

CITY OF BELLEVUE - 2009 PEDESTRIAN & BICYCLE  
TRANSPORTATION PLAN

- COMMERCIAL
- CIVIC / INSTITUTIONAL
- MULTI-FAMILY RESIDENTIAL
- HOTEL
- PARKING STRUCTURE

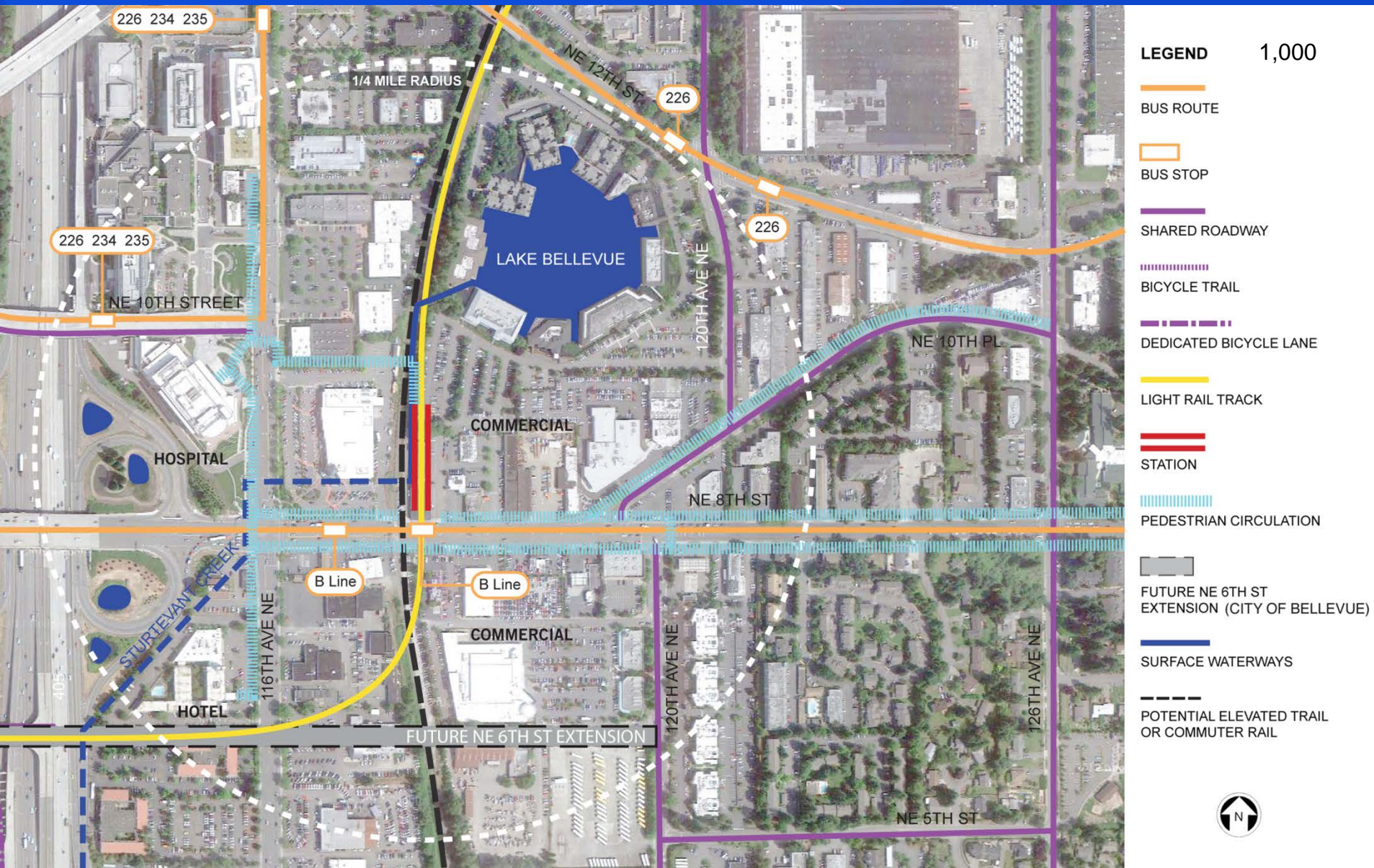


# Downtown Station





# Hospital Station



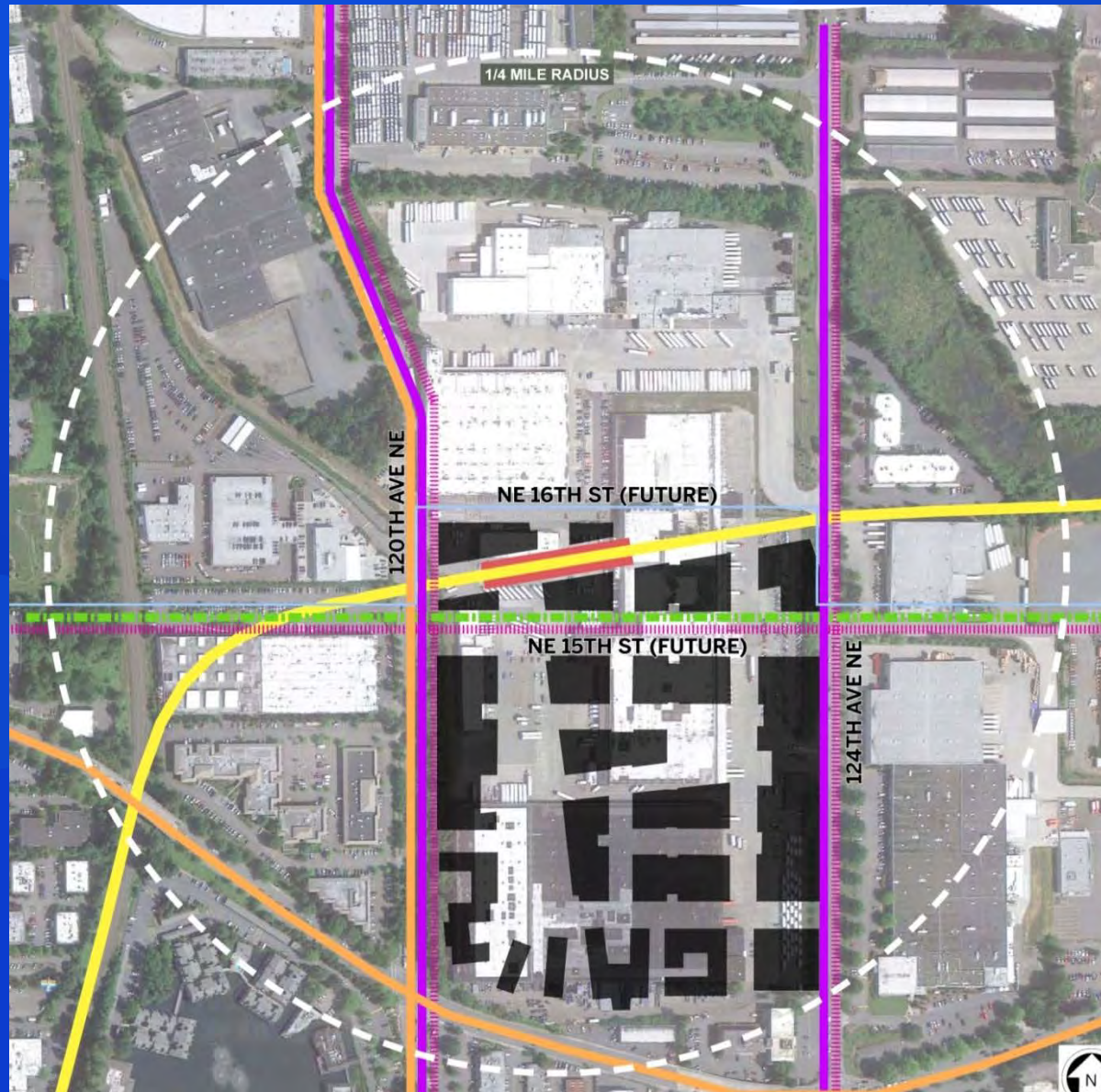


# Hospital Station





# 120<sup>th</sup> Station



Includes City of  
Bellevue and Sound  
Transit planned  
improvements

**LEGEND** 1,000

BUS ROUTE

BICYCLE ROUTE

BICYCLE LANE

OFF STREET PATH

PROPOSED  
NEW SIDEWALKS

LIGHT RAIL TRACKS

STATION

PATRON CATCHMENT  
AREA

FUTURE DEVELOPMENT

# 120<sup>th</sup> Station





# 130<sup>th</sup> Station



Includes City of Bellevue  
and Sound Transit planned  
improvements

## LEGEND 1,200

- BUS ROUTE & NUMBER XXX
- BICYCLE ROUTE
- PROPOSED BICYCLE ROUTE
- BICYCLE LANE
- PROPOSED NEW BICYCLE LANE
- OFF STREET PATH
- OFF STREET PATH
- SIDEWALKS
- PROPOSED NEW SIDEWALKS
- GOFF CREEK
- LIGHT RAIL TRACKS
- SHOPPING CORRIDOR  
- BEL-RED CORRIDOR  
2030 MASTER PLAN, COB
- CURRENT BUS STOP

# 130<sup>th</sup> Station





# Community and Art



11.07.2008 16:07

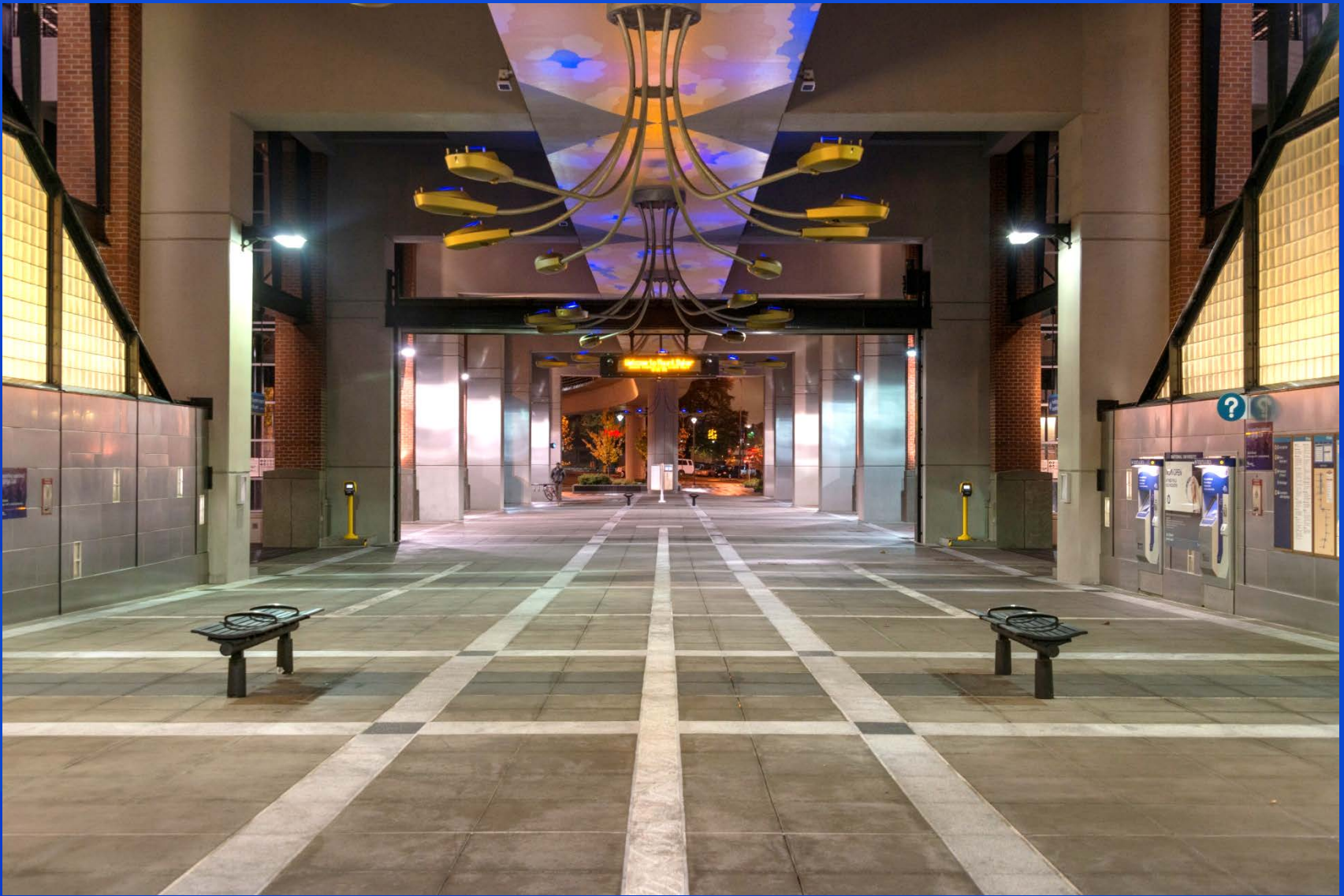






JK Walser











# 2008-2009 Design Excellence Award

## SEATTLE Central Link Light Rail Stations

Stadium Station



SODO Station



Beacon Hill Station



Mount Baker Station



Columbia City Station



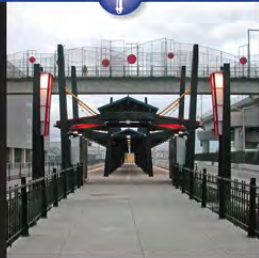
Othello Station



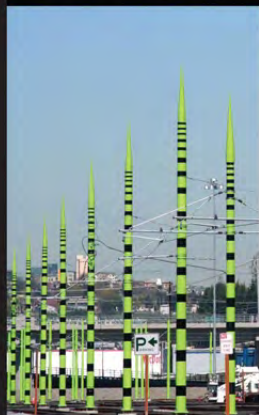
Rainier Beach Station



To Airport Station



Operation and Maintenance Facility



Systemwide / Between stations





# Questions?

