

Agenda: South Bellevue Segment



- Animation
- Public Outreach
- Station Design
- Corridor Elements
- Questions

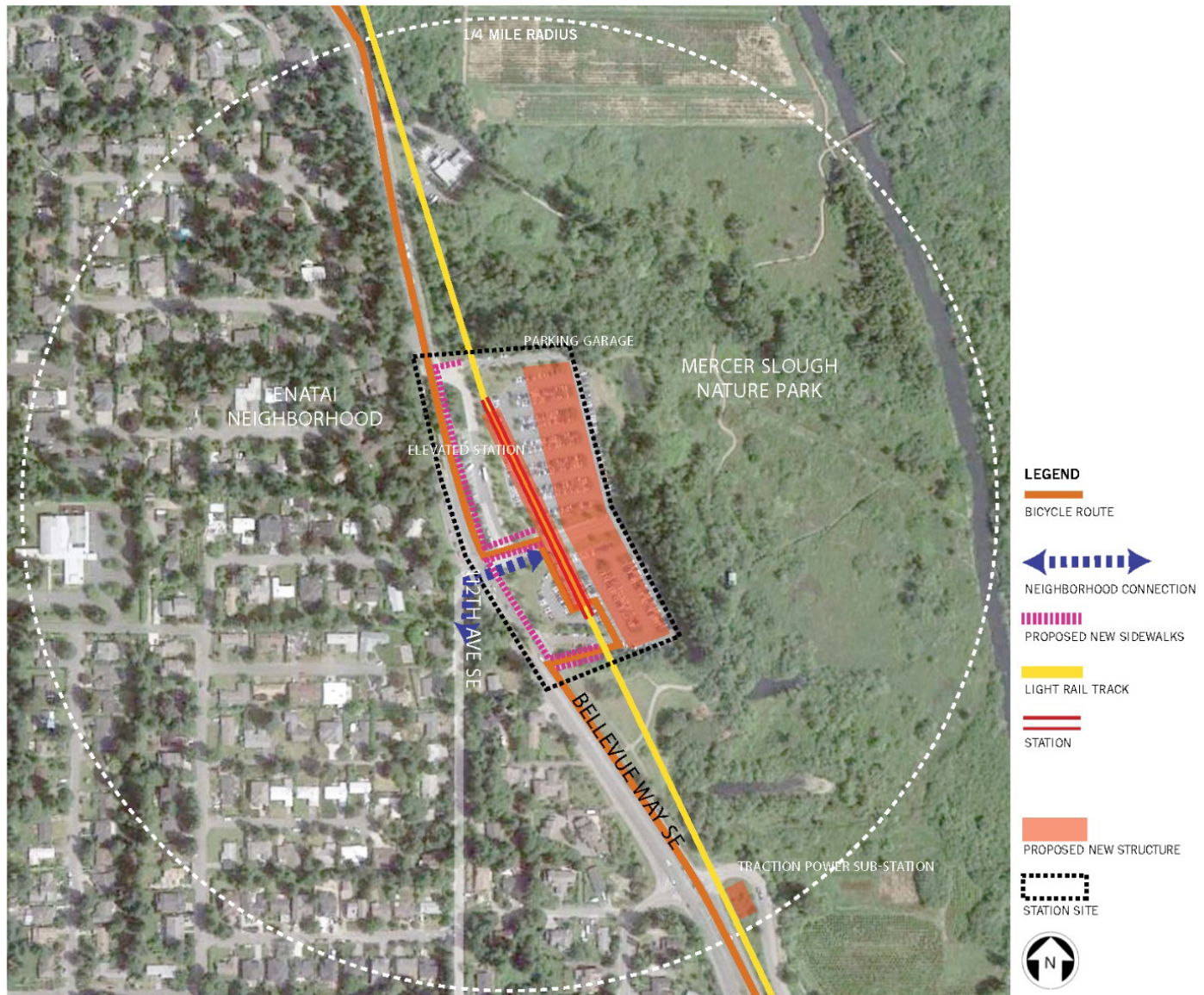
What we've heard

- Incorporation of the natural setting of the Mercer Slough into station and garage design
- Bellfield Park Lane/Surrey Downs connection
- Access for all modes (bus, train, bike, walk, KCM Access program, station area planning)
- Noise



SOUTH BELLEVUE STATION - NEIGHBORHOOD CONTEXT PLAN

EAST LINK EXTENSION



SOUTH BELLEVUE STATION - PERSPECTIVE AERIAL VIEW

EAST LINK EXTENSION



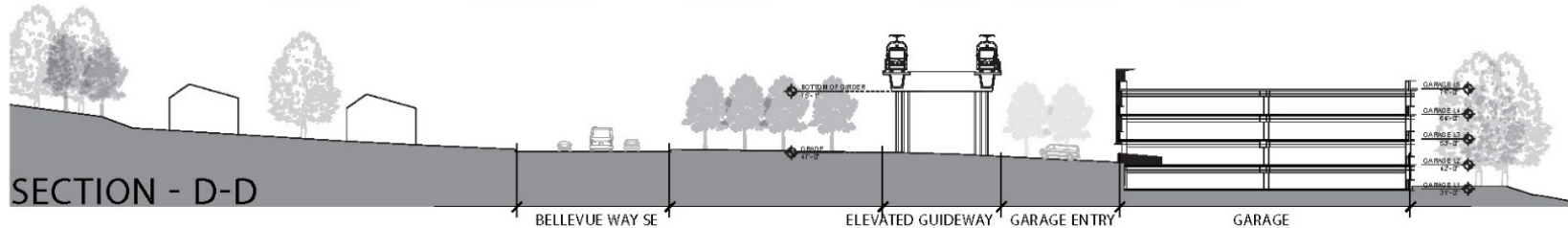
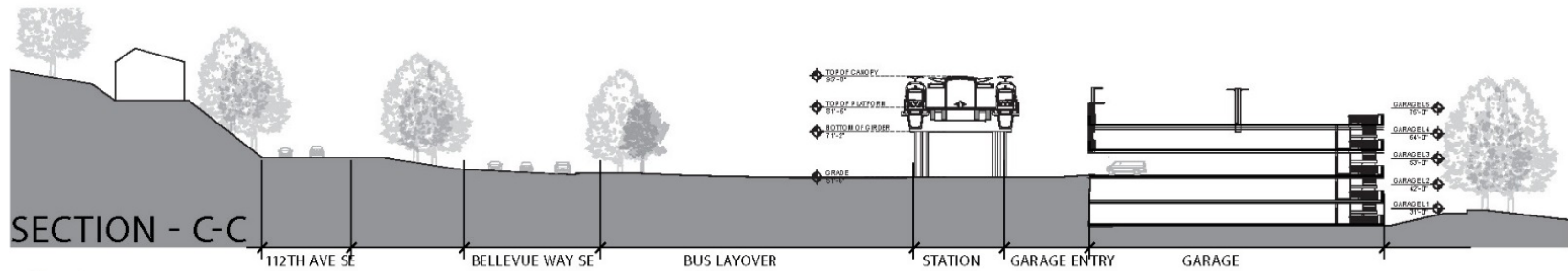
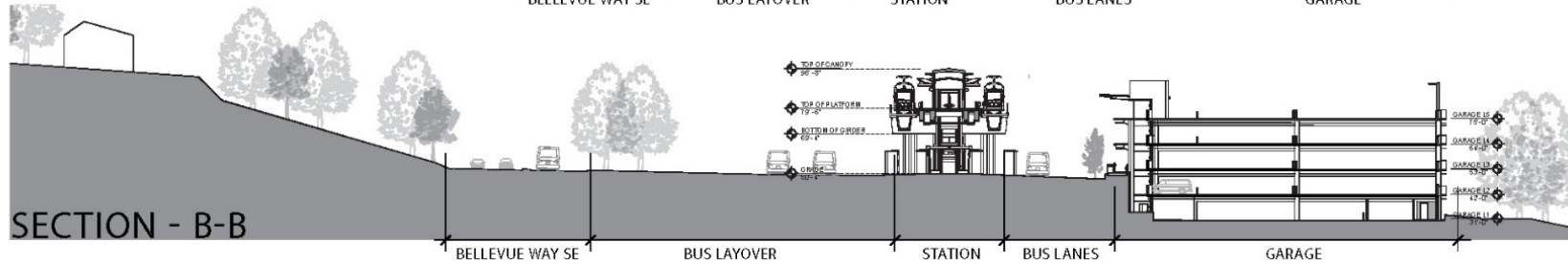
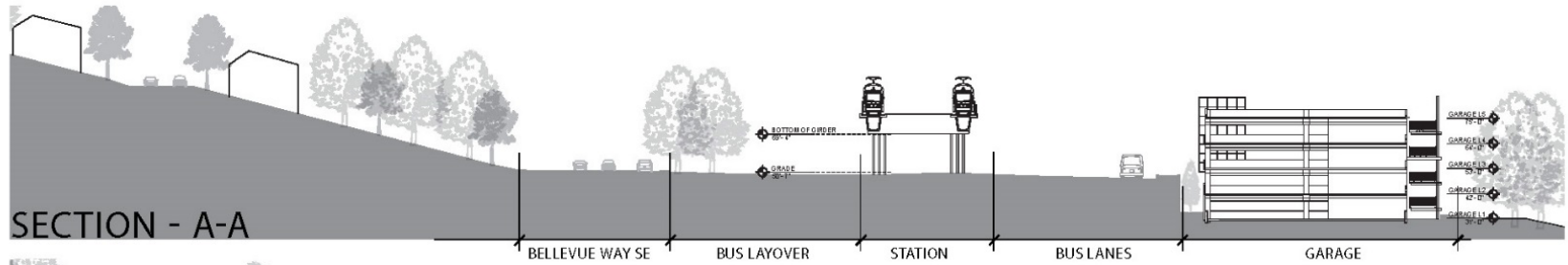
SOUTH BELLEVUE STATION - LANDSCAPE PLAN

EAST LINK EXTENSION



SOUTH BELLEVUE STATION - OVERALL SITE SECTIONS

EAST LINK EXTENSION



SOUTH BELLEVUE STATION - PERSPECTIVE SOUTH ENTRY

EAST LINK EXTENSION



SOUTH BELLEVUE STATION - PERSPECTIVE NORTH ENTRY

EAST LINK EXTENSION



FEB. 2014

SOUTH BELLEVUE STATION - PERSPECTIVE PLATFORM

EAST LINK EXTENSION



SOUTH BELLEVUE STATION - PERSPECTIVE GARAGE SOUTH ENTRY

EAST LINK EXTENSION



FEB. 2014

SOUTH BELLEVUE STATION - PERSPECTIVE GARAGE NORTH ENTRY

EAST LINK EXTENSION

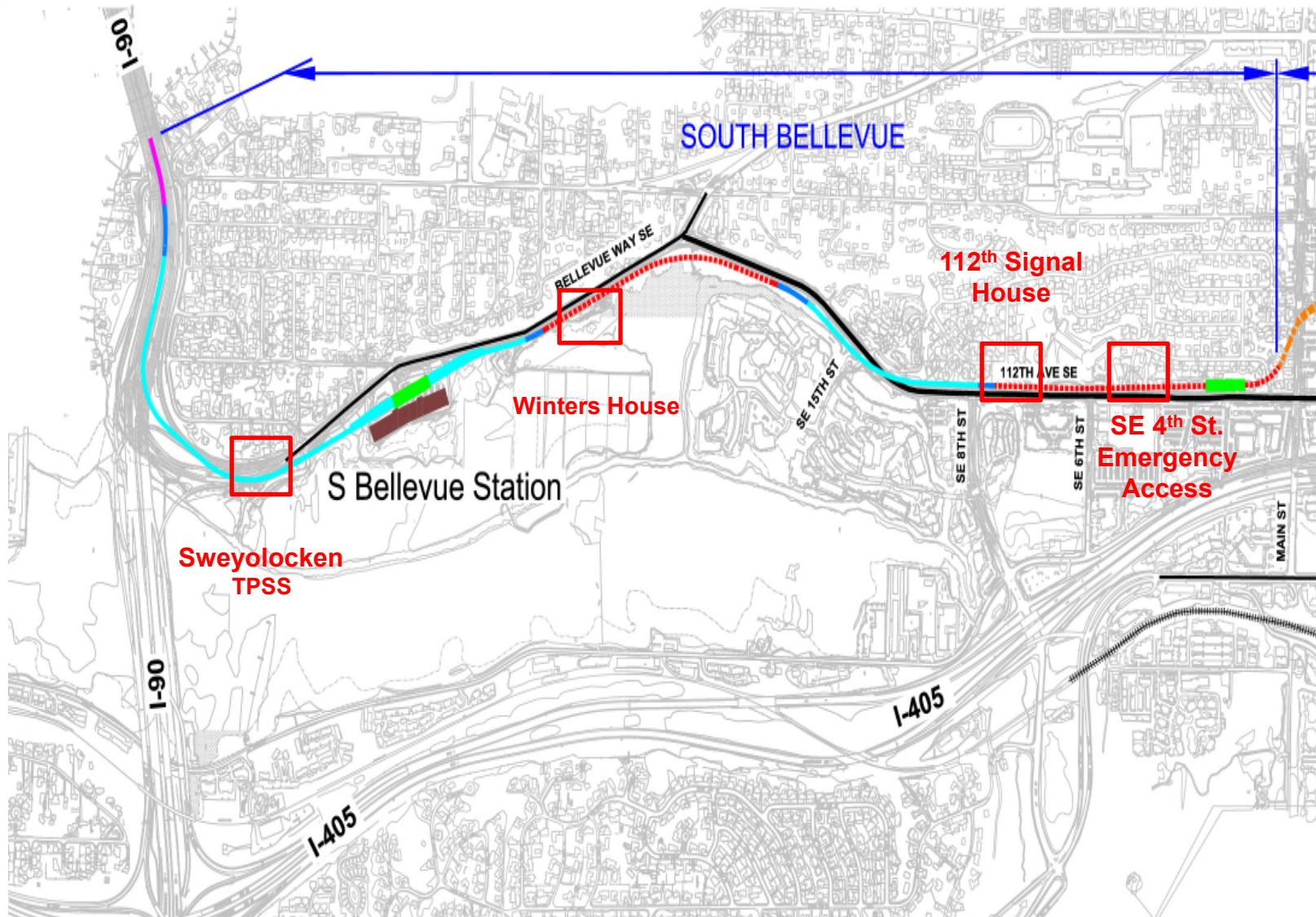


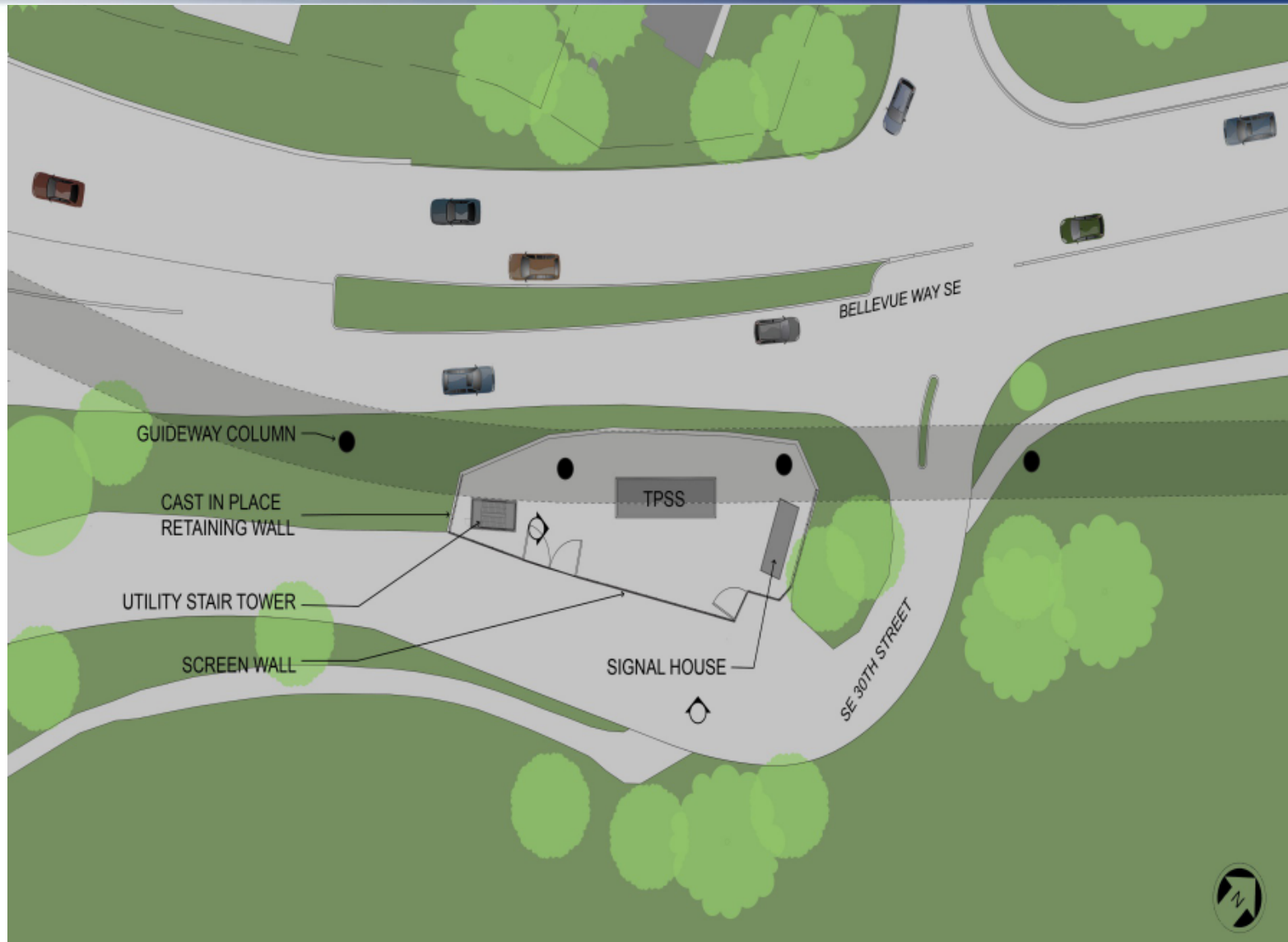
FEB. 2014

S. BELLEVUE STATION - LANDSCAPE PLAN

EAST LINK EXTENSION







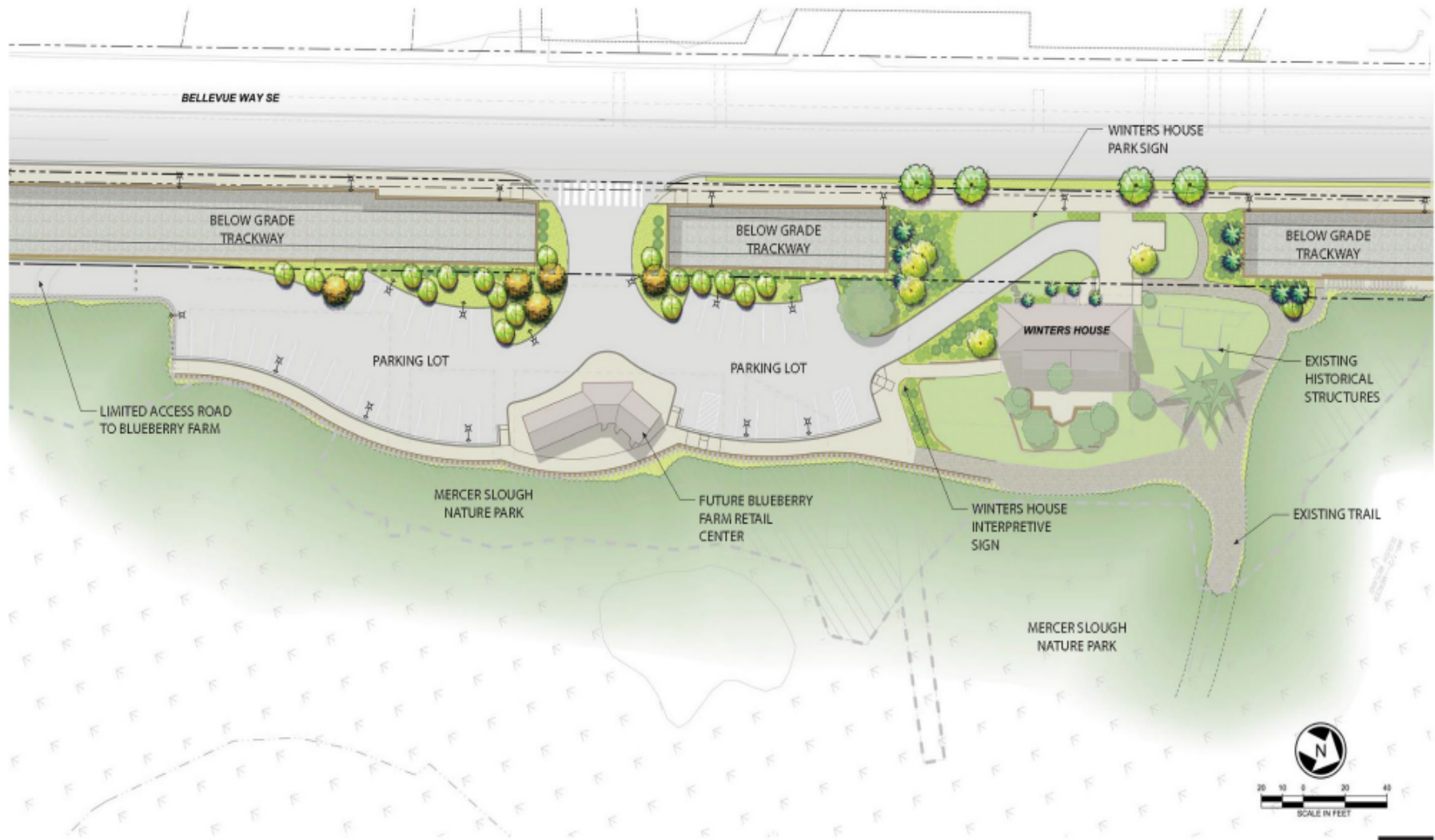
Sveylocken – Plan

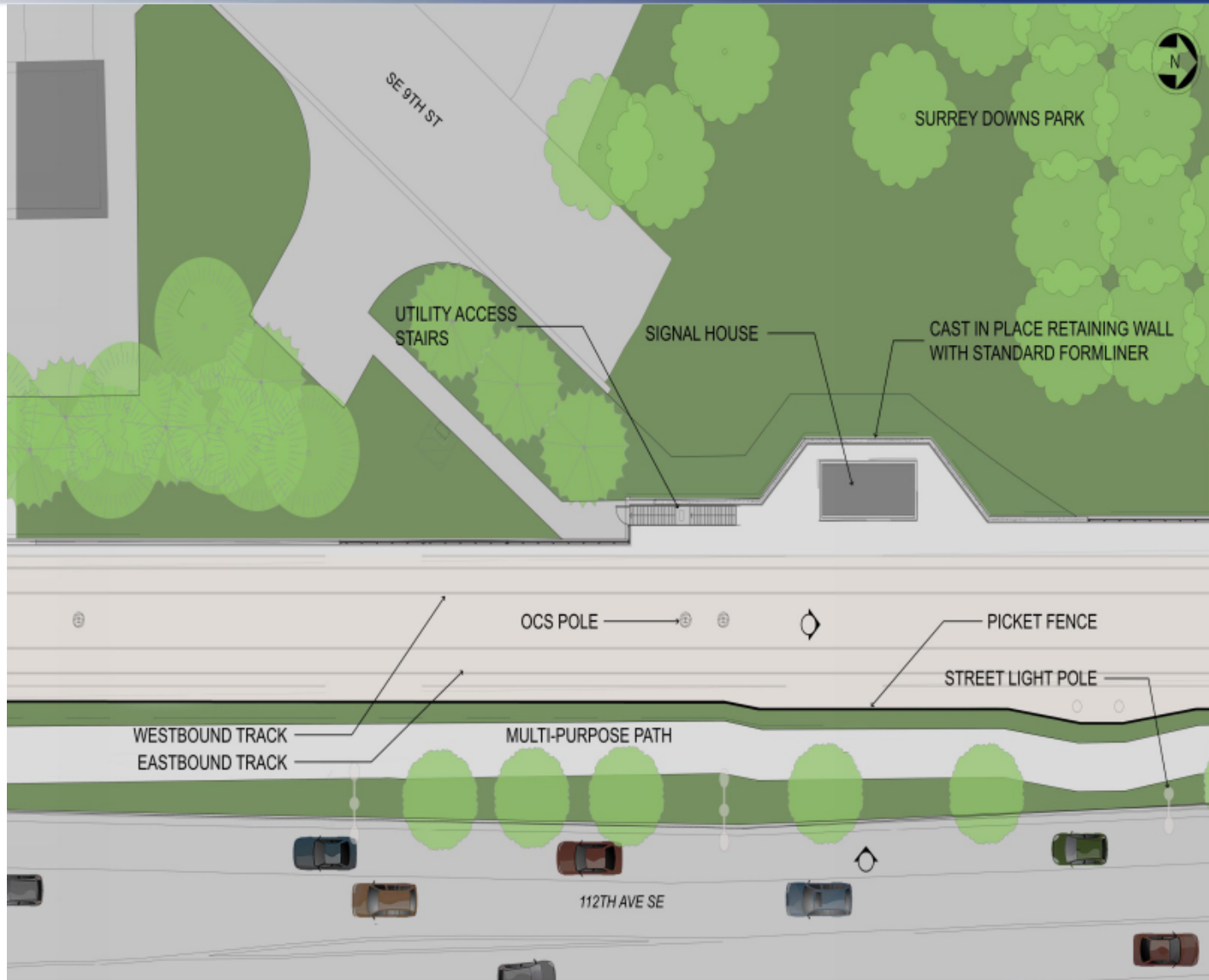


Sveylocken – Perspective

S. BELLEVUE CORRIDOR - WINTERS HOUSE

EAST LINK EXTENSION





SE 112th Signal House – Plan



SE 112th Signal House – Perspective



SE 4th St. Emergency Access – Plan



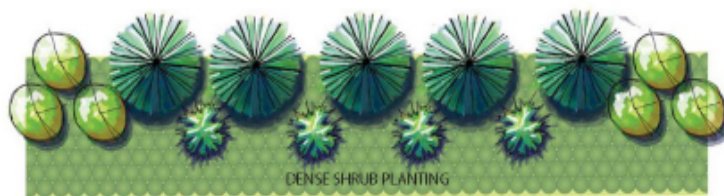
SE 4th St. Emergency Access – Perspective

S. BELLEVUE CORRIDOR - 112TH AVE SE AT SE 4TH ST

EAST LINK EXTENSION

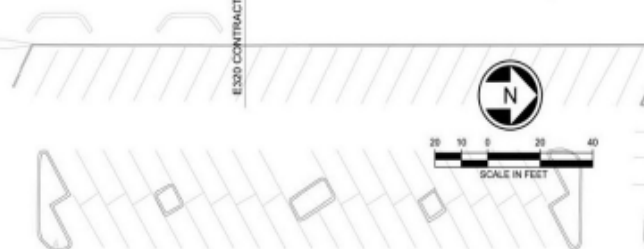


30' PLANTING BUFFER PER CITY OF BELLEVUE
CODE REQUIREMENTS (LUC 20.25B.040C.2.c)



SCALE: 1" = 10'

- Min. of 5 trees per 1,000 sq. ft. of buffer area
- 10' min. height for trees at time of planting
- Max. 40% of trees can be deciduous
- Trees must be set back from center of rail guideway by 34' minimum
- Evergreen shrubs must be min. 42" in height and spaced 3' on center at time of planting
- Mix of evergreen and deciduous shrubs





Concrete Form Liner



Standard Track Fence

Questions?

