

# LIGHT RAIL PERMITTING ADVISORY COMMITTEE



## COMMITTEE MEETING

October 29, 2014 | 3:00PM -5:00PM | ROOM 1E-113



# Agenda

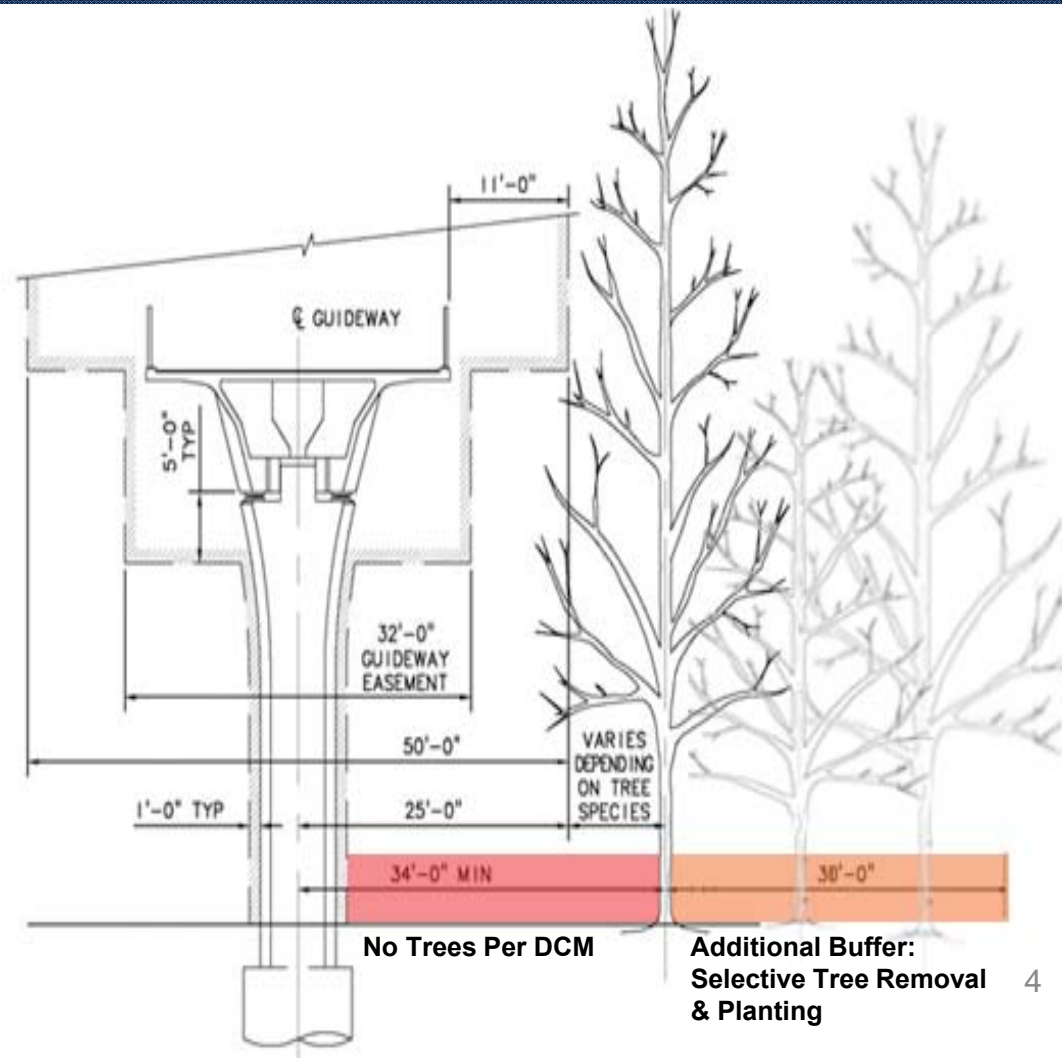
- **3:00**
  - Call to Order, Approval of Agenda, Approval of October 15<sup>th</sup> Meeting Minutes – Co-Chairs Van Houten and Mathews
  - Public Comment
- **3:20**
  - Tree Preservation and Context Sensitive Design - Sound Transit and Matthews Jackson
- **4:00**
  - South Bellevue Station Updated Renderings – Sound Transit
- **4:50**
  - Public Comment
- **5:00**
  - Adjourn

# Methodology & Removal Overview

- Tree Assessment
  - Tree location survey – all trees 4 in diameter breast height (dbh) and larger
  - Tree identification classification
    - Species
    - Category
    - Significant
    - Health
- Tree Removal Overview
  - Trees within the Project foot print
  - Safe Operations & Maintenance Area
    - 34' from centerline of guideway, per ST's Design Criteria Manual
    - Additional 30' buffer zone

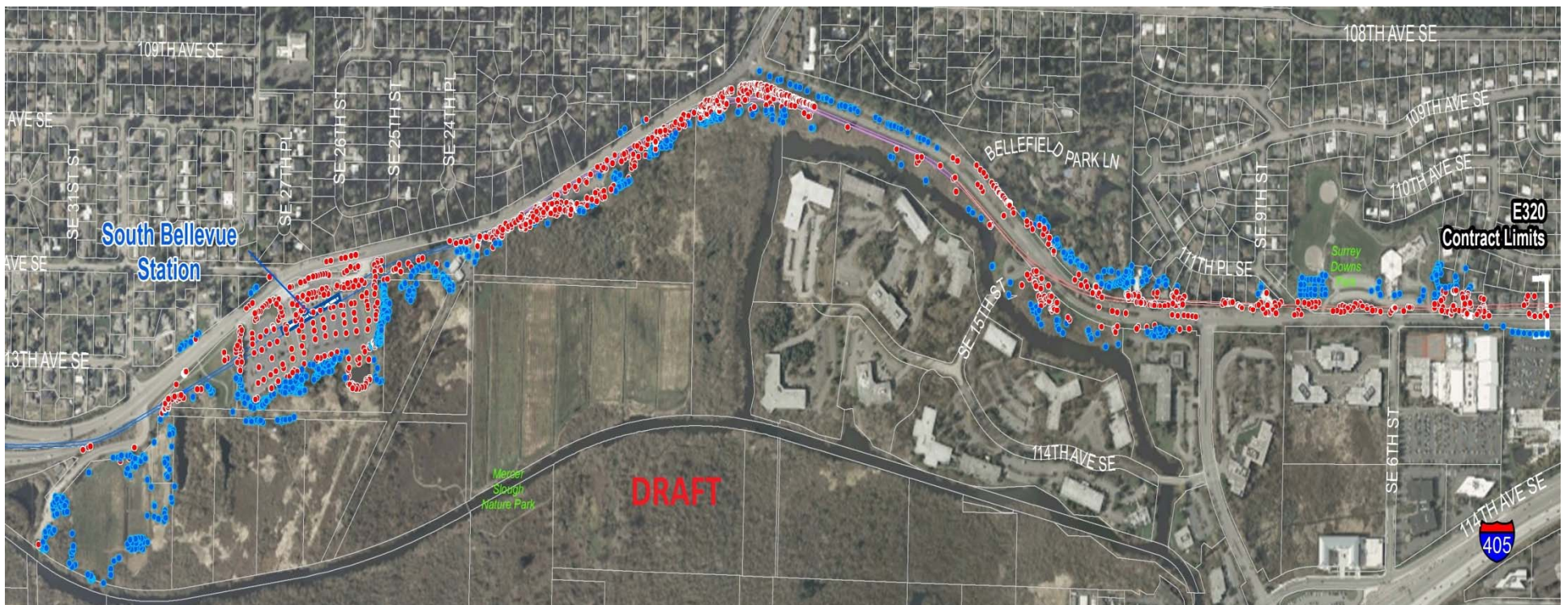
# Safe Operations and Maintenance Area

- No trees/stumps within 34 ft of the guideway centerline
- Scrub-shrub & groundcover planting allowed
- Additional Buffer: 30ft for selective planting and removal
- Prevent mature tree canopy from blowing onto the guideway





# Tree Preservation & Removal Overview

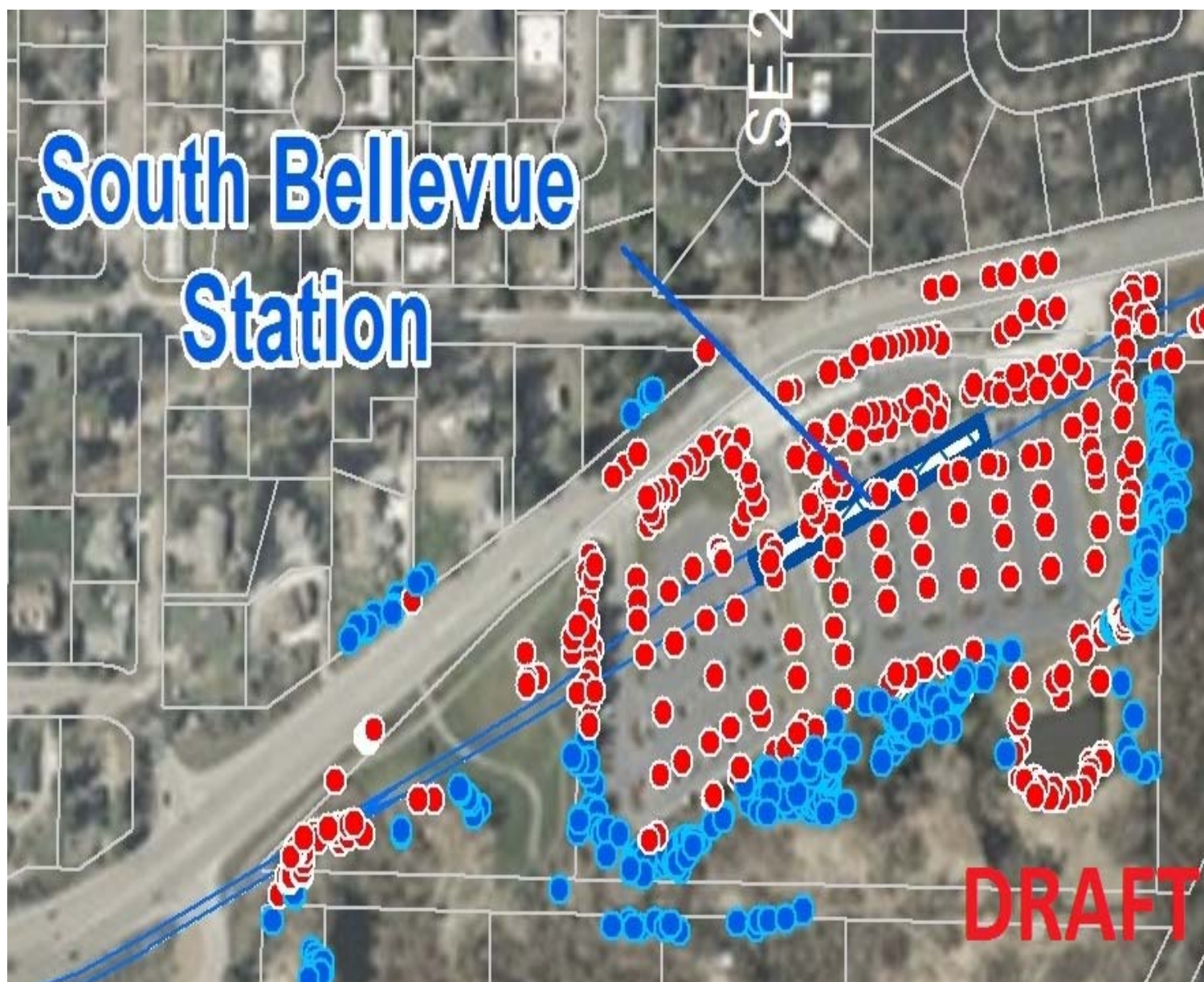


# Tree Survey, Removal & Replanting- Summary

E320 Design Package Tree Removal	
Total Trees Inventoried (≥4"DBH)	<b>2,196</b>
Total Trees Removed	<b>1,279</b>

E320 Design Package Tree Replacement	Corridor and Station Plantings	Mitigation/Restoration Area Plantings	
		Coniferous	Deciduous
Proposed Trees to be Planted	595	722	8,262
Total Trees to be Planted	<b>9,579</b>		

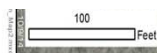
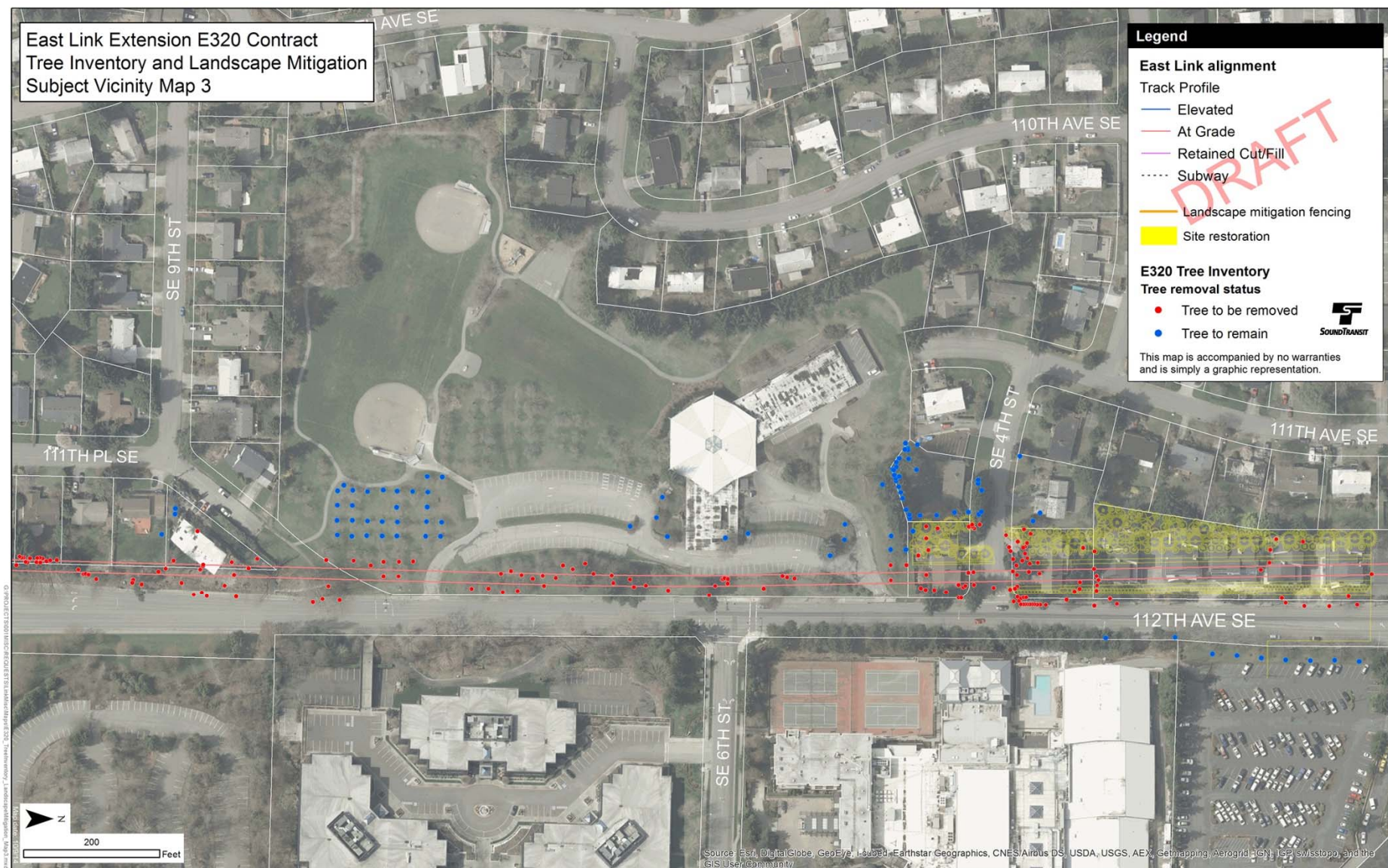












Source: Esri, DigitalGlobe, GeoEye, Earthstar Geographics, CNES/Airbus DS, USDA, USGS, AeroGRID, IGN, SCS, Swisstopo, and the GIS User Community

This map is accompanied by no warranties and is simply a graphic representation.

# Tree Specifications

- Trees within Station / Corridor Landscapes
  - Size Range: 1½" – 3" caliper / 7'-12' tall (Proposed)
  - Incorporates additional native species when close to Mercer Slough
- Trees within Environmental Mitigation Landscapes
  - Size Range: 2-gal. / ~1.5'-3' tall (Proposed)
  - Northwest native plants



# Station Planting Areas – South Bellevue Trees

## TREES - EVERGREEN



**Shore Pine**

*Pinus contorta* var. *contorta*

Screening evergreen tree proposed for around the station perimeter.



**Western Hemlock**

*Tsuga hereophylla*

Screening evergreen tree proposed for the station perimeter.



**Western Red Cedar**

*Thuja plicata*

Screening evergreen tree proposed for around the station perimeter.



**Mountain Hemlock**

*Tsuga mertensiana*

Evergreen tree proposed for screening the station perimeter and the west side of the parking garage.



## TREES - DECIDUOUS



**Pyramidal European Hornbeam**

*Carpinus betulus* 'Fastigiata'

Proposed street tree for along Bellevue Way SE in front of the station.



**Vine Maple**

*Acer circinatum*

Small, native, understory tree proposed for around the parking garage. photo by: Ed Book



**Maidenhair Tree**

*Ginkgo biloba* 'fastigiata'

Deciduous tree proposed for along entryways to the station.



**Jade Butterfly Ginkgo**

*Ginkgo biloba* 'Jade Butterfly'

Small, multi-stem, deciduous tree proposed for under the guideway and around the station plazas.







# Tree Retention

## City Initial Comments

- Profile #1: Existing Condition – what it looks like today
- Profile #2: Cleared Condition – what it looks like after clearing
- Profile #3: Planted Condition – what it looks like after planting has occurred
- Profile #4: Planted Condition at year 5 – what it looks like at five years
- Profile #5: Planted Condition at year 10 – what it looks like at 10 years
- Profile #6: Planted Condition at year 20 – the target condition.

Different profile sections will allow us to see how the trees/vegetation will be in 20 years time. This will allow us to address the interim condition and identify what/how we can make some targeted adjustments to add some taller trees or faster growing trees that we can phase out over time as we approach the target condition.



# South Bellevue Station Updated Renderings

## **Sound Transit Presentation**

Light Rail Permitting Committee



# Next Meeting

## **November 5<sup>th</sup>**

- **Continued discussion of tree preservation, art, and revised renderings as needed/requested by CAC**

## **November 6<sup>th</sup>**

- **Sound Transit Open House at Enatai Elementary School**