

LIGHT RAIL PERMITTING ADVISORY COMMITTEE



COMMITTEE MEETING

April 16, 2014 | 3:00PM -5:00PM | ROOM 1E-108



Agenda

- **3:00**
 - Call to Order, Approval of Agenda, Approval of March 5th, March 19th , and March 25th Downtown Segment Open House Meeting Minutes – Co-Chair Lynde
 - Public Comment
- **3:20**
 - Station Area Planning Update – Michael Kattermann
- **3:50**
 - CAC provides oral feedback to Sound Transit on Downtown Bellevue Segment – Co-Chair Lynde
- **4:30**
 - CAC introduction to the Bel Red Design and Mitigation Permit (Permit #13-135564 LD) – Matthews Jackson
- **4:50**
 - Public Comment

STATION AREA PLANNING

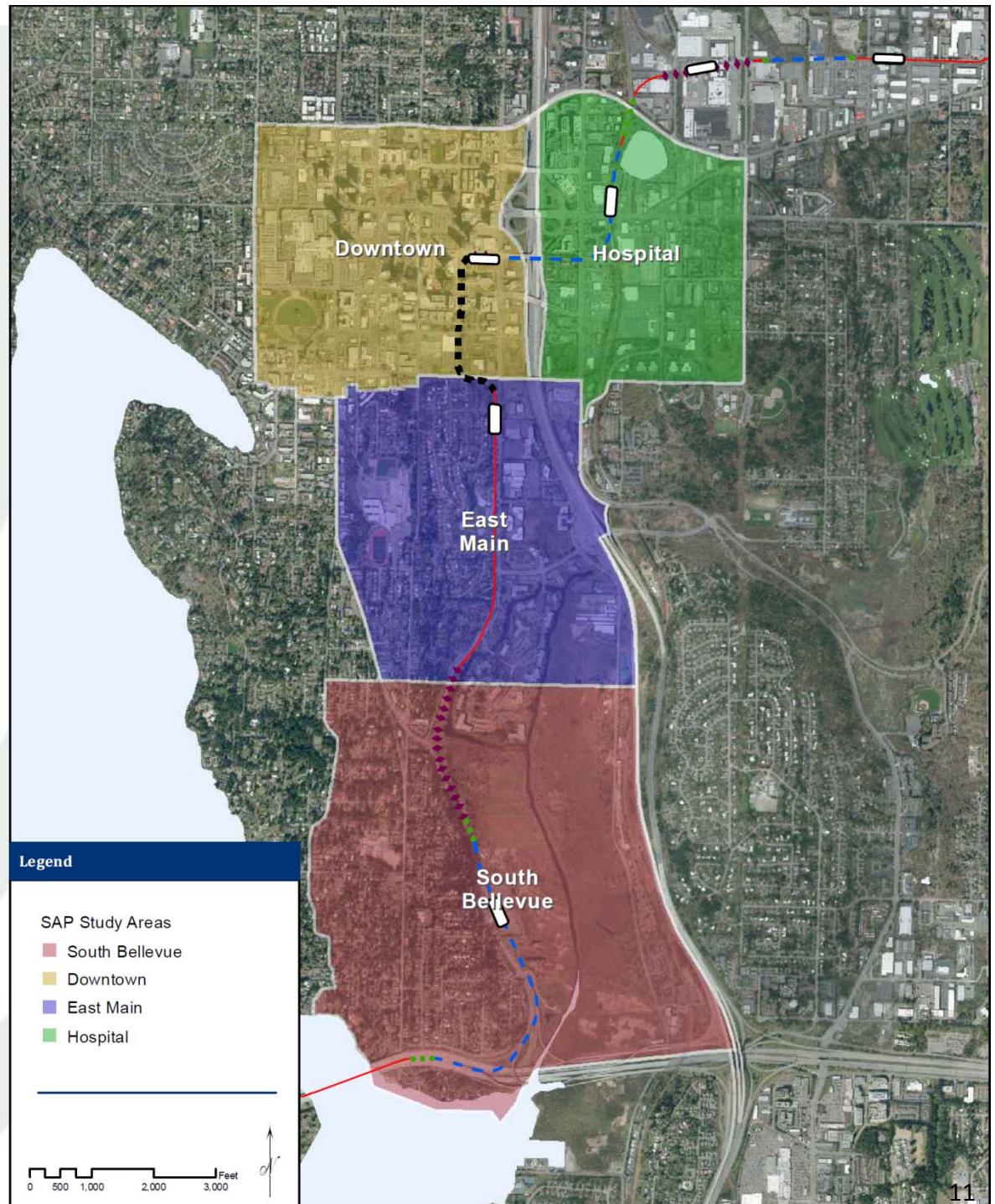
LIGHT RAIL PERMITTING CAC

April 16, 2014

Station Area Planning

Study Areas

STATION AREA
PLANNING



STATION AREA PLANNING v. PERMITTING

- Station area planning = everything beyond light rail project w/in approx. ½ mile
- Permitting = Sound Transit owns, builds or operates
- Avoid overlap, defer to permit process, ongoing coordination

TYPICAL ISSUES

Light Rail Best Practices

- Community & neighborhoods
- Community involvement
- Elevated, at-grade, tunnel
- Station security
- Street design & operations
- Connecting people to light rail
- Construction impacts & mitigation
- Property values
- Land use

Station Area Planning

- Access to neighborhood
- Access to station
- Aesthetics & identity
- Cut-through traffic
- Redevelopment
- Safety & security
- Spillover parking (hide-&-ride)

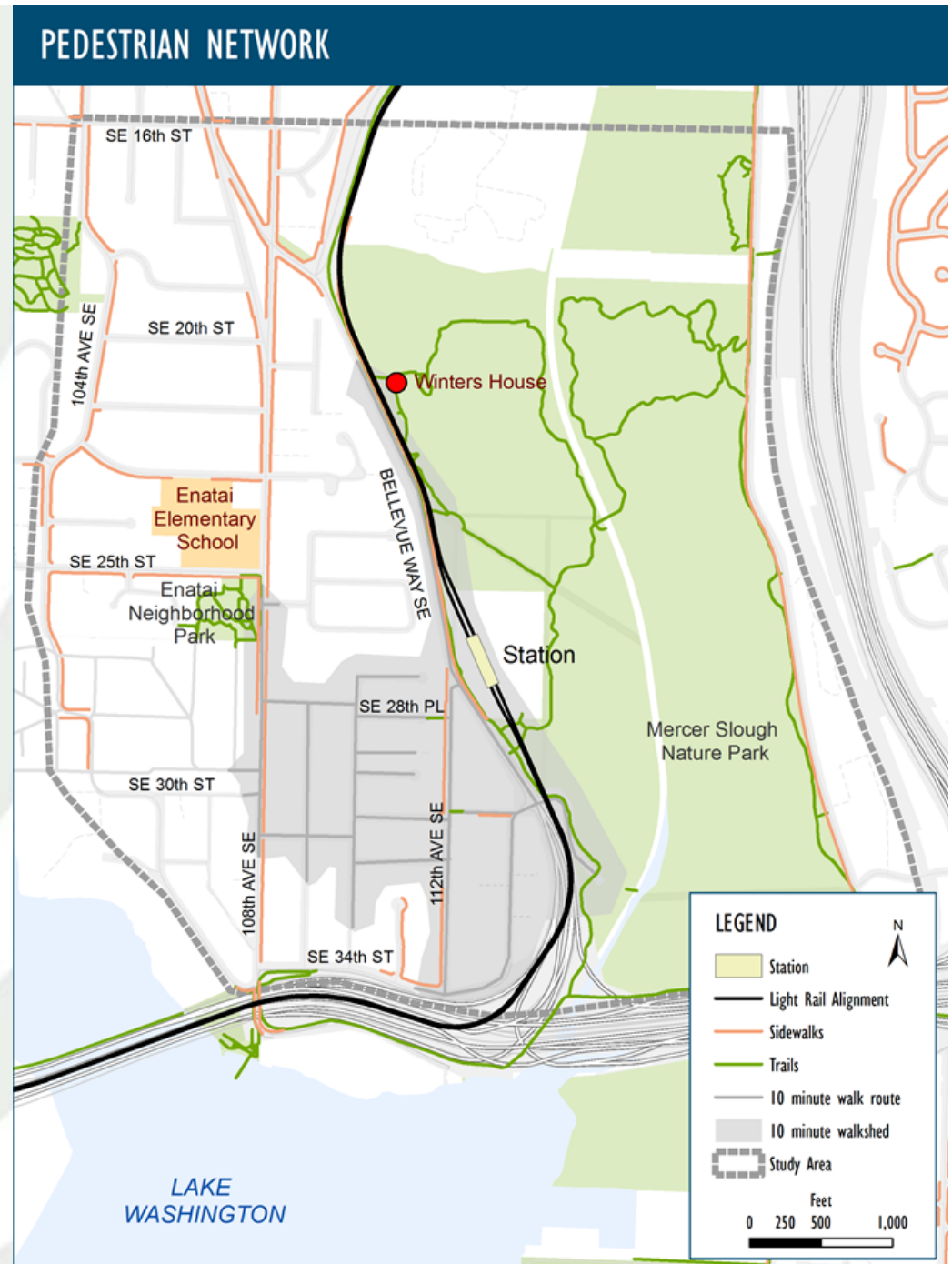
OVERVIEW

- Station access – pedestrian, bicycle, transit
- Parking – hide-&-ride, park-&-ride
- Traffic – cut-thru, neighborhood access, arterial traffic

STATION ACCESS

Pedestrians

- Maximize use of station
- 10 minute walk (+/- ½-mile)
- Safe, comfortable environment
- Way-finding



STATION ACCESS

Bicycle

- Greater radius (3 miles ??)
- Safe, direct routes
- Way-finding



STATION ACCESS

Transit

- Regional express (ST)
- Local feeder service (Metro)
- Transit Master Plan (Bellevue)



PARKING

Hide-&-Ride

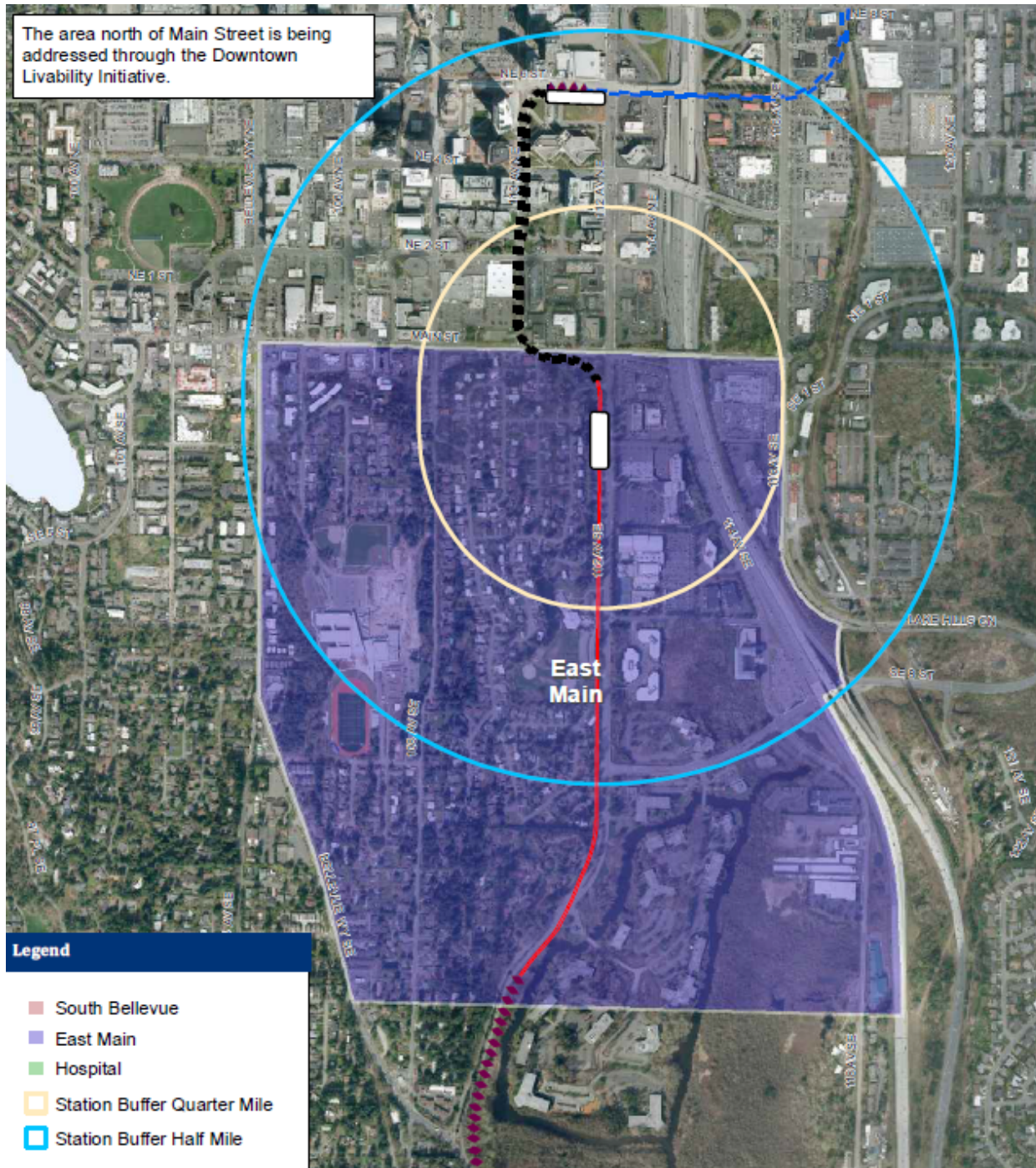
- Neighborhood impacts
- RPZ & enforcement

Park-&-Ride

- Purpose – intercept SOV trips close to origin to reduce congestion & VMT
- Part of regional transit system
- Functional & aesthetic context

TRAFFIC

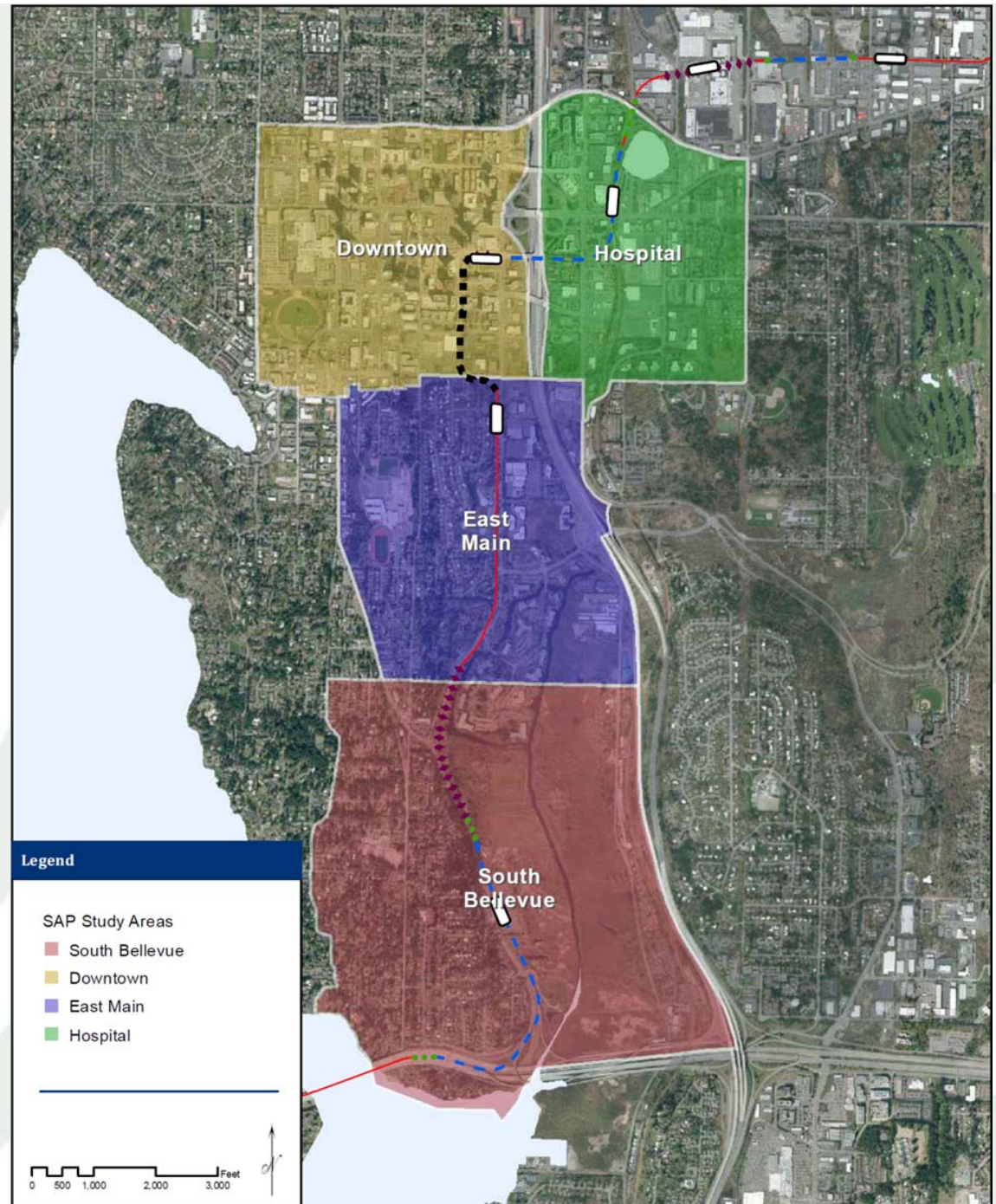
- **Cut-thru traffic**
 - Avoiding congestion
 - Perceived shorter (time, distance)
 - Traffic calming
 - Safety concerns
- **Neighborhood access**
 - Peak hour congestion
 - Limited access points



East Main Study Area

- Cut-thru traffic
- Neighborhood access
- Parking
- Station access

QUESTIONS





CAC Feedback Downtown Segment

CAC Comments to Sound Transit on Major Project Elements

Station Design and Materials

Colors

Landscaping

Weather Protection

Ancillary structures

Access

Railings

Other

Next Steps



Light Rail Permitting Citizen Advisory
Committee



Next Meeting

Wednesday, May 7

- CAC provides ST with advisory document for East Main Segment
- CAC review of Bel Red D&M Permit application