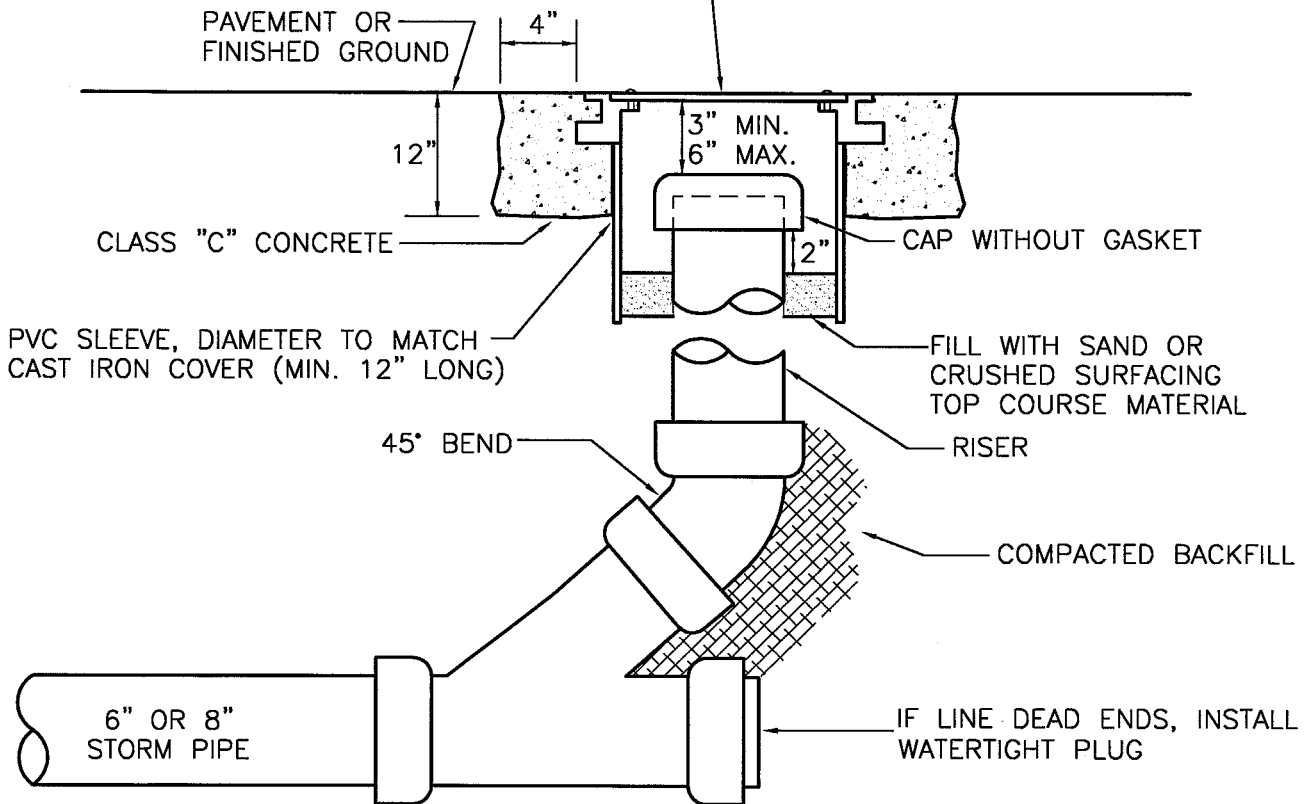


BOLT-LOCKING CAST IRON RING & COVER. OPENING DIAMETER 14" OR GREATER.
H-20 RATED IN PAVED AREAS.



NOTES:

1. CAST IRON COVER SHALL READ "DRAIN".
2. LOCKING BOLTS FOR COVER SHALL BE 5/8" -11 NC STAINLESS STEEL TYPE 304 SOCKET (ALLEN) HEAD BOLTS, 2 INCHES LONG.
3. 14" BOLT-LOCKING COVER SHALL BE EQUAL TO INLAND FOUNDRY NO. 209.



City of
Bellevue

SURFACE WATER UTILITY

TITLE

CLEANOUT