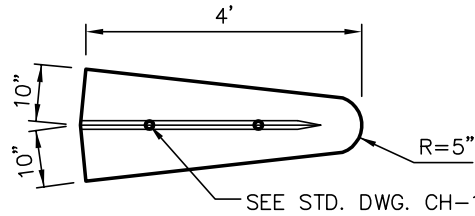
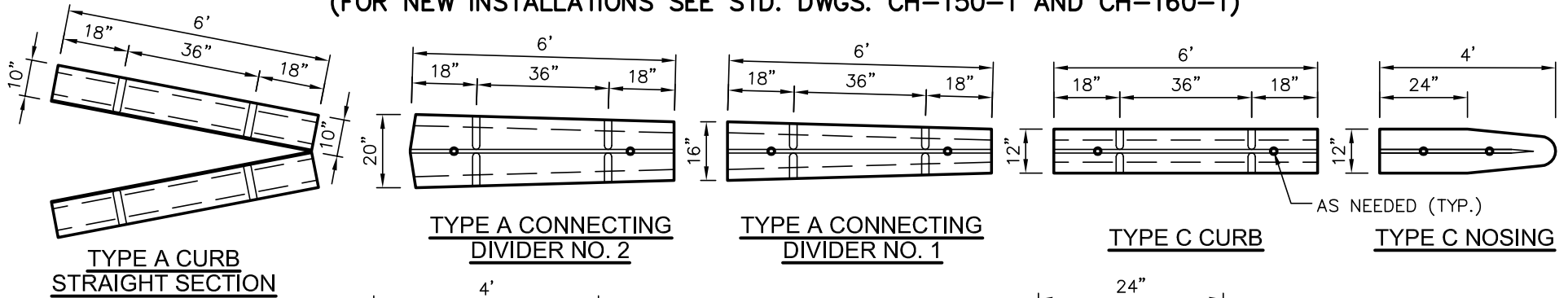
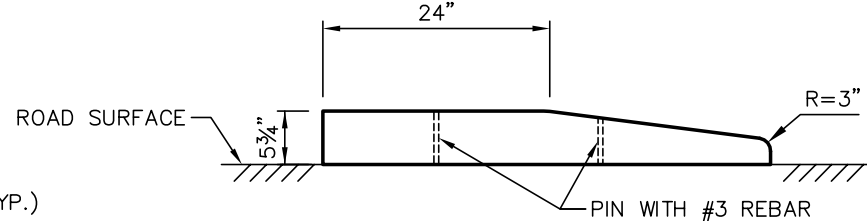


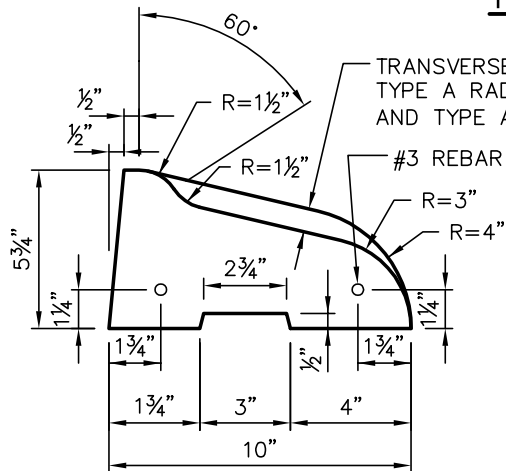
FOR MAINTENANCE OR EXTENSION OF EXISTING CURB ONLY. NOT FOR NEW INSTALLATIONS.
 (FOR NEW INSTALLATIONS SEE STD. DWGS. CH-150-1 AND CH-160-1)



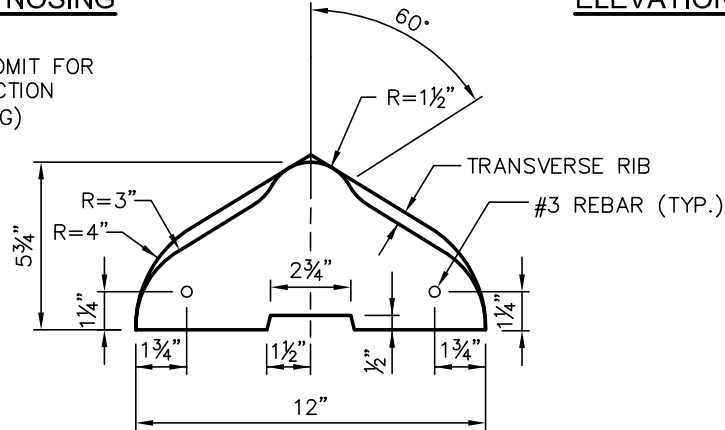
TYPE A NOSING



ELEVATION - TYPE A NOSING AND C NOSING



SECTION - TYPE A CURB



SECTION - TYPE C CURB

NOTES:

ONLY 6' SECTIONS OF TYPE C AND TYPE A CURB SHALL BE USED ON ALL INSTALLATIONS, EXCEPT FOR NOTE 2.

1. THE USE OF 1' BLOCK SECTIONS OF TYPE C AND TYPE A CURB SHALL ONLY BE USED TO FORM SMALL RADIUS CURVES OR ADJUSTMENTS IN FINAL LENGTH, AS APPROVED BY THE ENGINEER.
2. ALL PRECAST TRAFFIC CURBS SHALL BE SECURED USING WSDOT APPROVED 2 PART EPOXY RESIN.
3. PRECAST CURB NOSINGS AND NEXT TWO SECTIONS OF CURB SHALL BE BOTH PINNED AND EPOXIED TO THE ROAD SURFACE. SEE STD. DWG. CH-140-1.



**PRECAST TRAFFIC CURBS
 FOR MAINTENANCE OF EXISTING CURB**

DRAWING NUMBER	CH-130-1
SCALE	NONE
REVISION DATE	12/16
DEPARTMENT	TRANS