

Lewis Creek Basin

Lake Washington Watershed (WRIA 8) / State Stream #08-0162



LAND CHARACTERISTICS

Basin Area: 1,424 Total Acres (City area: 4.7%)
 Drainage Jurisdiction(s):

Bellevue: 70.1%	Kirkland: 0.0%
Beaux Arts: 0.0%	Medina: 0.0%
Clyde Hill: 0.0%	Newcastle: 0.0%
Issaquah: 24.6%	Redmond: 0.0%
King County: 5.0%	Renton: 0.0%

Lowest Elevation: 31 Ft
 Highest Elevation: 1,423 Ft

Total Length of Open Channel: 10.0 Miles
 Total Length of Storm Drainage Pipes: 23.5 Miles

POPULATION

Basin Population (2016): 7,542 (5.0% of all Basins)
 Basin Population Density: 3,389 People per Square Mile
 The population density in Bellevue ranges from 1,344 to 9,851 people per square mile.

LAND USE

	Entire Basin	Within Bellevue
Public Right of Way:	14.4 %	39.3 %
Commercial/Office:	0.7 %	0.7 %
Industrial:	0.0 %	0.0 %
Institutional/Government:	1.6 %	1.6 %
Mixed Use/Misc:	6.3 %	2.4 %
Multi-Family	3.5 %	2.4 %
Open Space/Park:	19.0 %	16.2 %
Single Family Residential:	41.6 %	31.4 %
Unknown:	13.0 %	5.9 %

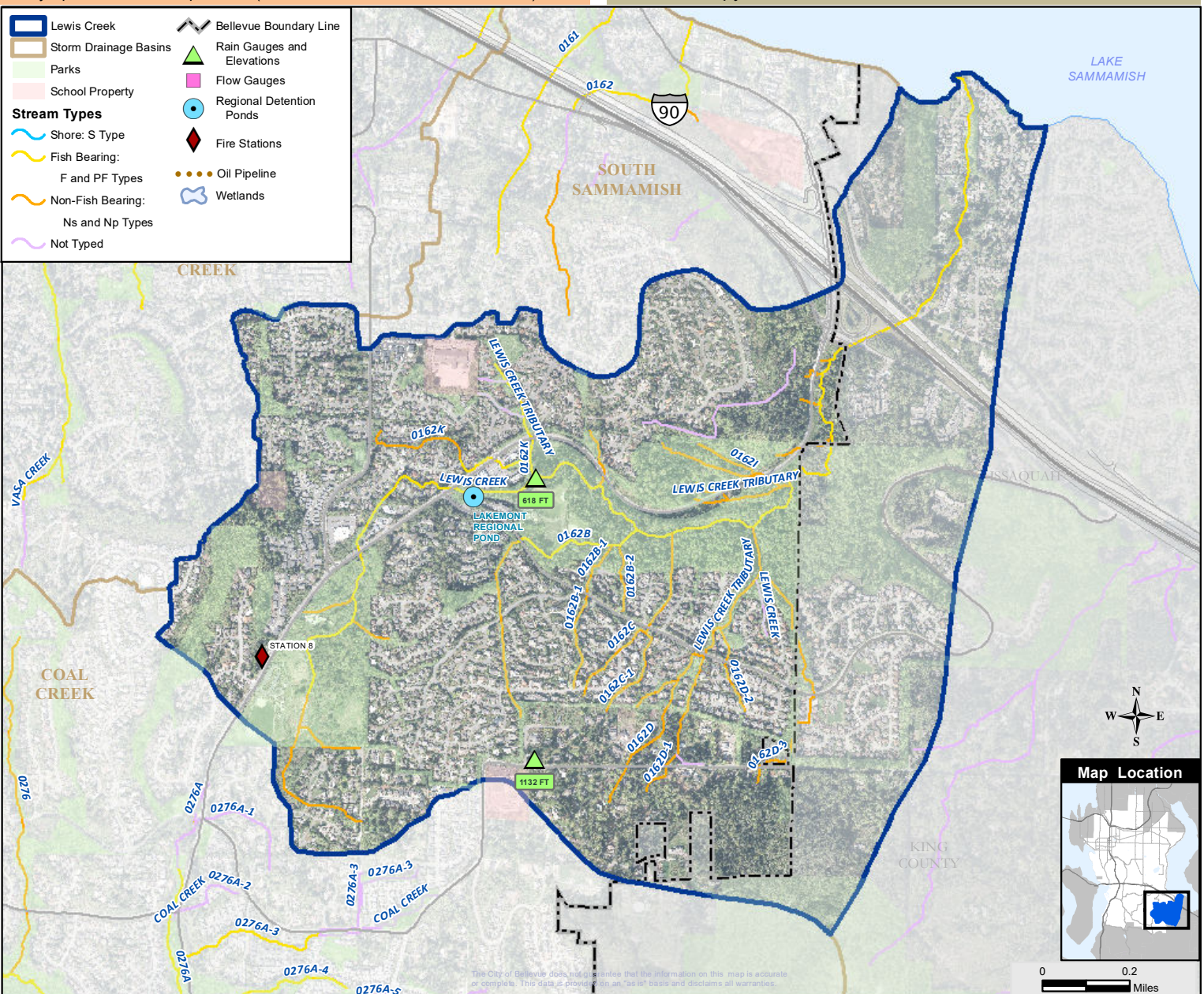
SALMON PRESENT in BASIN

Chinook**	Sockeye
Rainbow & cutthroat trout	Kokanee+
Coho+	Steelhead (Lake only)

* Listed Federal Endangered Species
 + City Species of Local Importance (Bellevue Land Use Code 20.25H.150A)

LAND COVER

	Entire Basin	Within Bellevue
Impervious:	29.4 %	30.6 %
Tree Canopy:	52.2 %	49.8 %
Impervious in 100 Ft Stream Buffer:	17.7 %	15.1 %
Tree Canopy in 100 Ft Stream Buffer:	69.5 %	61.0 %



The City of Bellevue does not guarantee that the information on this map is accurate or complete. This data is provided on an "as is" basis and disclaims all warranties.

0 0.2 Miles