

# Sustainable Bellevue

2026 Spring Town Hall



# Agenda

- Welcome and Meet the Team
- Sustainable Bellevue Plan Overview
- Greenhouse Gas Inventory Update
- Tree Canopy Assessment Update
- Q&A
- 2026 Implementation Programs and City Budget
- Engagement Activity



# Your Sustainability Team

Jennifer Ewing, Sustainability Manager

Jake Sykes, Sustainability Coordinator

Patrick Babbitt, Climate & Energy Program Manager

Colin Munson, Climate & E-Mobility Coordinator

Becca Book, Sustainability Program Manager

Loren Pacheco, Climate Engagement Specialist

Sarah Philips, Energy Smart Eastside Program Manager

• Emily Korn, Energy Smart Eastside Program Coordinator

• Kurt Hellman, Energy Smart Eastside Engagement Specialist

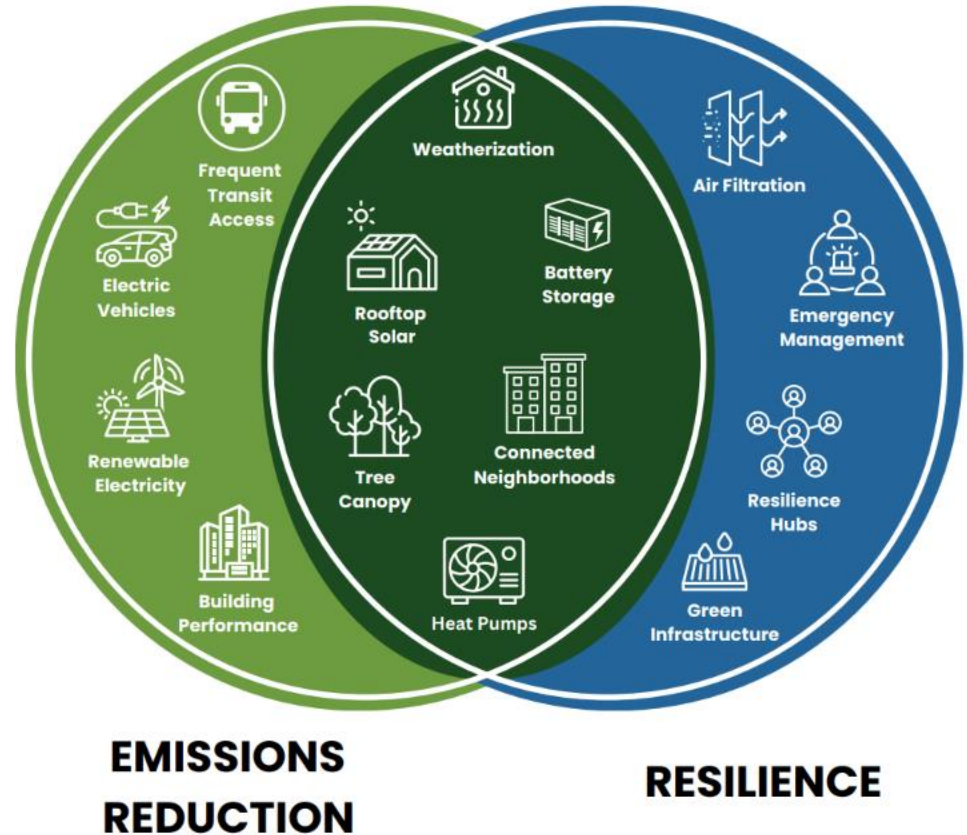
• Miranda Gormley, Energy Smart Eastside Fellow

• Brady Adams, Buildings & Energy Fellow

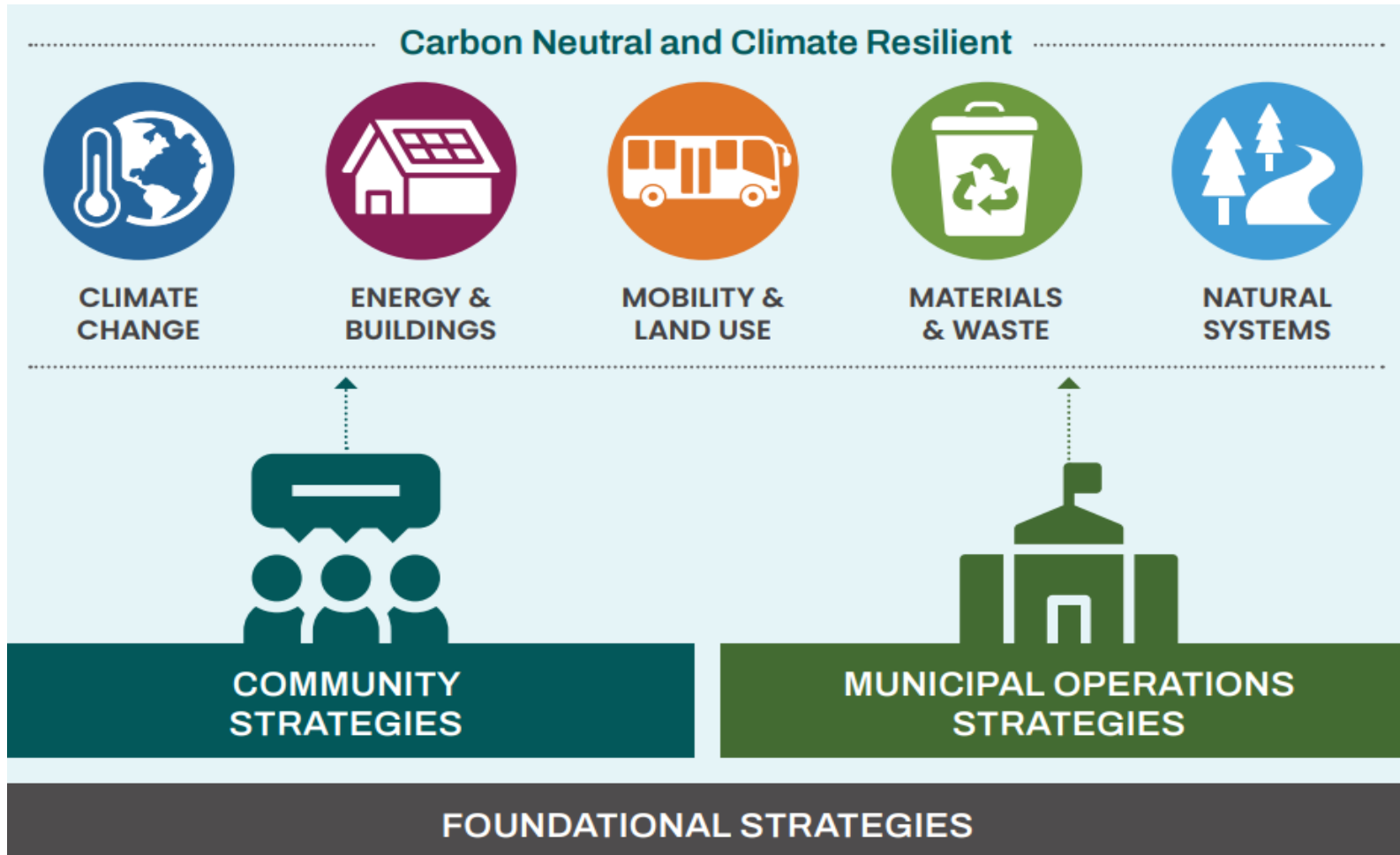


# Sustainable Bellevue Plan 2026-2030

- Adopted by City Council in Nov. 2025
- Goals:
  - 95% Reduction in Emissions by 2050
  - Carbon Neutral Municipal Operations by 2040
  - Prepare for and mitigate risks of climate change impacts



# 5 Focus Areas | 41 Strategies | 93 Actions



# Community Priorities from plan update



**BOLD  
CLIMATE  
ACTION**



**COMMUNITY  
RESILIENCE**



**SUPPORT FOR  
RENTERS AND  
MULTIFAMILY  
BUILDINGS**



**WASTE  
REDUCTION**



**TRANSIT ACCESS  
& WALKABILITY**



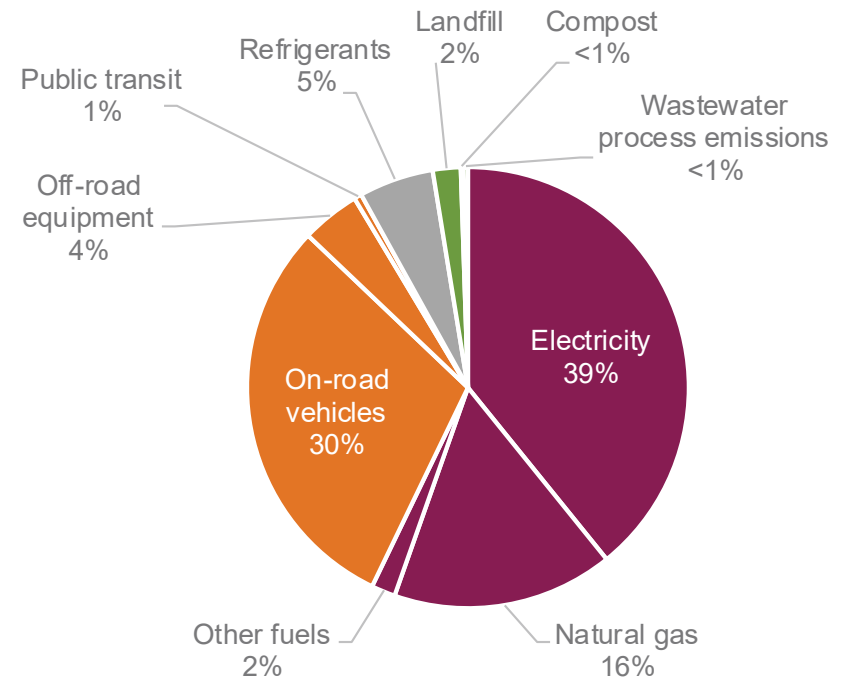
**ENERGY  
EFFICIENCY &  
GRID RESILIENCE**

# 2024 GHG Inventory



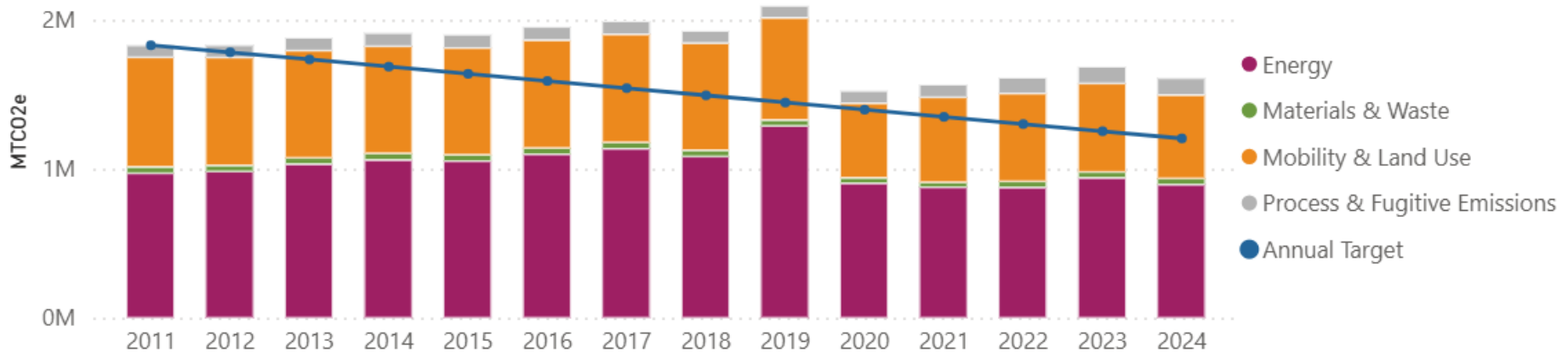
# 2024 Greenhouse Gas Emissions

- Building Energy and Transportation make up ~87% of all emissions
  - Communitywide emissions total **1,608,235 MTCO<sub>2</sub>e for 2024**
  - Municipal Operations total **7,790 MTCO<sub>2</sub>e for 2024**
  - Emissions per capita are **10.38 MTCO<sub>2</sub>e, down 33% from 2011**



# Emissions Trends

- Total 2024 emissions are 12% below 2011 and continuing a downward trend
- 4.6% decrease from 2023
- Emissions are declining following post-pandemic recovery



# Tree Canopy Assessment



# 2023 Tree Canopy

TREE CANOPY IN 2011

**37.5%**  
8,051 ACRES

TREE CANOPY IN 2019

**39.4%**  
8,461 ACRES

TREE CANOPY IN 2021

**39.6%**  
8,499 ACRES

TREE CANOPY IN 2023

**39.3%**  
8,429 ACRES

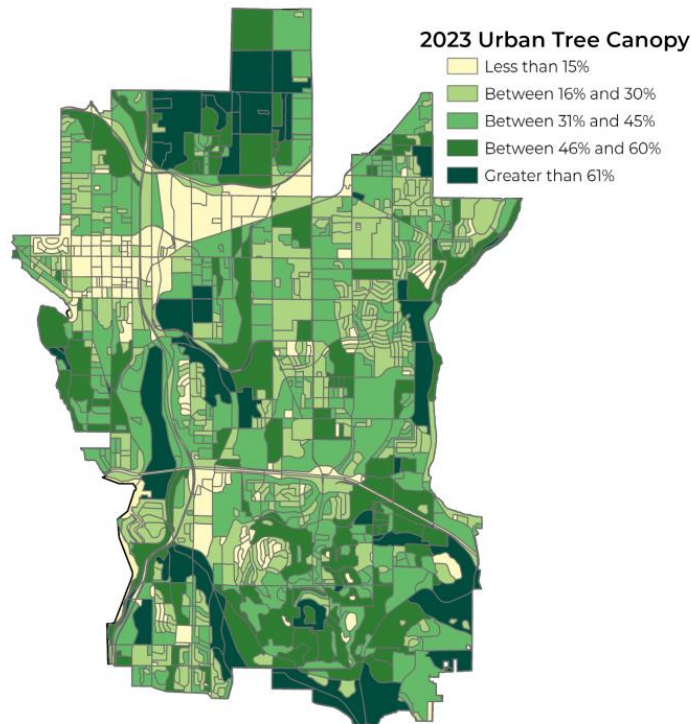
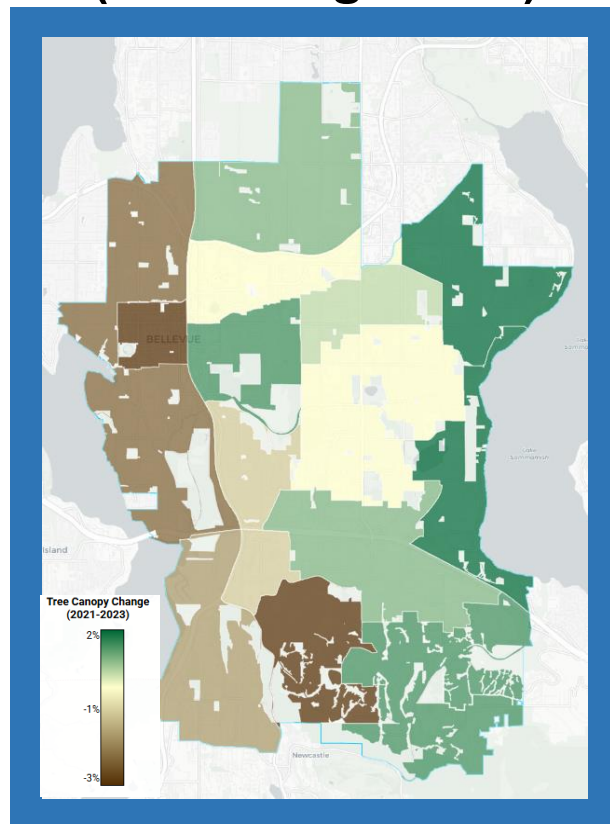


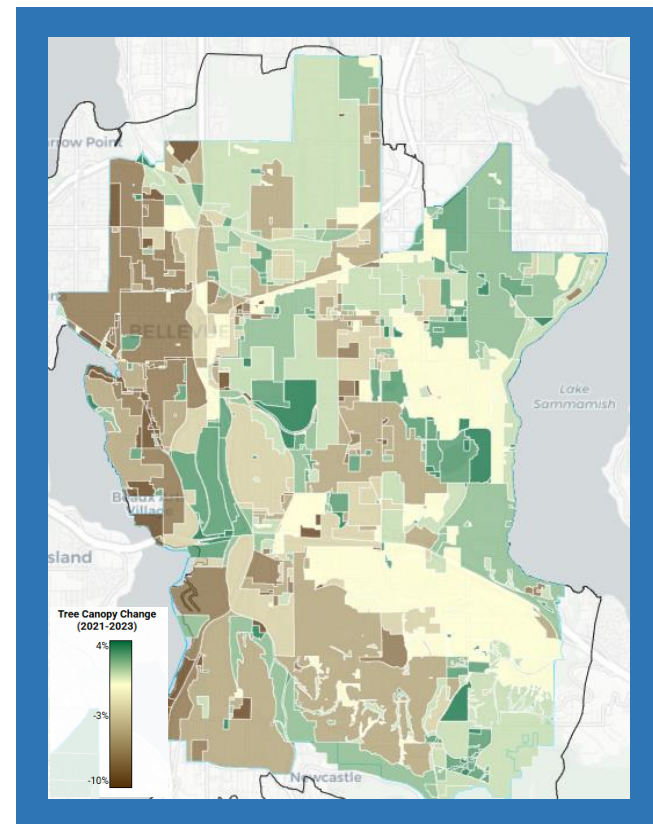
Figure 1. 2023 canopy coverage by census blocks.

# 2021-2023 Canopy Trends

## Change by Neighborhood (Excluding Parks)



## Change by Land Use Type



[Bellevue, WA TreePlotter](#)

# Q&A



# Implementation Priorities

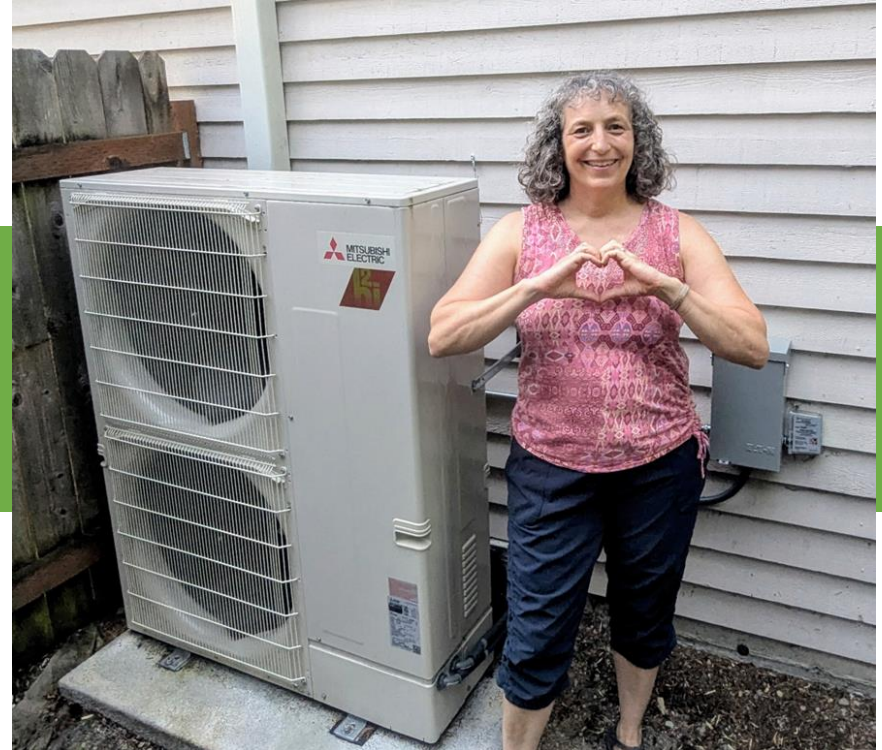


# Energy Smart Eastside

Energy Smart Eastside is a six-city partnership.

We supports the equitable transition to **energy efficient** and **resilient** homes.

- 900+ heat pumps
- Range of incentives
- Outreach & education





## New in 2026!

- Condominiums & townhomes
- Rental properties
- Weatherization
- Heat pumps water heaters



# Clean Buildings Incentive Program

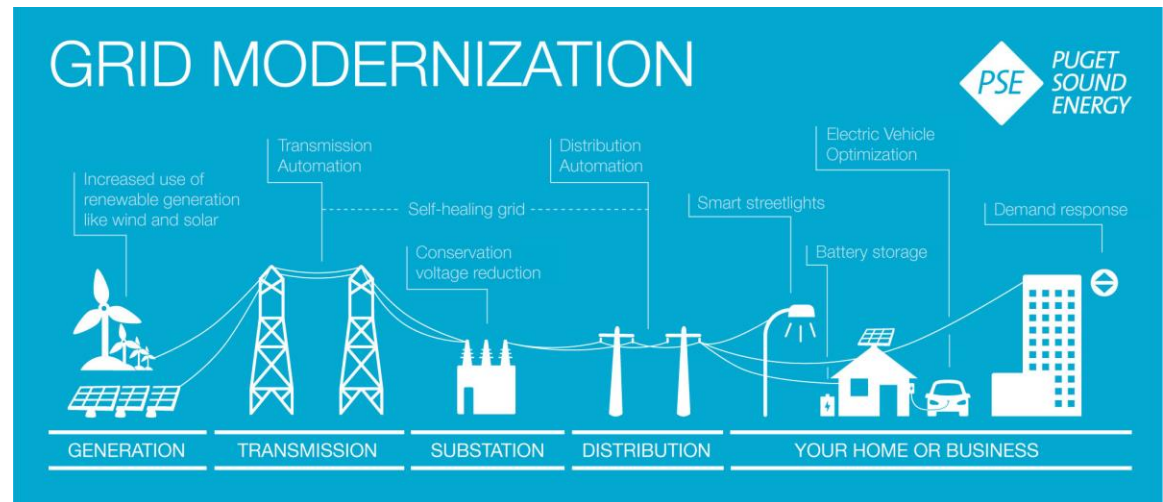
- Assists buildings with Clean Buildings Law compliance
- Drives energy and cost-savings, GHG reductions, and better user experience
- Expansion: Issaquah & Redmond
- Impact: up to 3,969 GHGs reduced thru 2028



# Grid Capacity Study



- Partnership with Redmond
- Analyzes grid readiness for growth and electrification thru 2045
- Results by end of Q2



# Green Building Design Support

**The City of Bellevue is helping affordable housing developers build efficient, resilient, and cost-effective communities.**



- Maximize Incentives
- Lower Energy Bills.
- Enhance Resident Health & Climate Resilience

# Wilburton Sustainable District

- Builds on Sound Transit and King County Investments to create a multimodal hub
- Aligned with Citywide GHG emissions reduction goals
- Fosters a dynamic, sustainability focused sense of place



# ChargeReady Bellevue

- Free technical assistance for multifamily property managers
- Live in a multifamily building? Let's talk!
  - [ChargeReady@bellevuewa.gov](mailto:ChargeReady@bellevuewa.gov)
- Informational webinar: April 15th @ 12pm



# Pedal Forward Eastside (Summer 2026)

- E-bike rebate program launching **Summer 2026**
- \$500 rebate for all; \$2000 rebate for income-qualified applicants
- Sign up for the waitlist today!



# Tree Giveaway

- 700 trees distributed in our fifth annual giveaway
- Partnership with 300 Trees and Amazon
- Targeted outreach to low-canopy neighborhoods
- Next giveaway **October 24, 2026**
  - Applications open this summer



# Climate Resilience Heat/Smoke Campaign



- 100 filter fan kits distributed in partnership with Mini City Hall
- Low-cost, high-impact climate resilience measure
- Relaunching summer 2026



# Better Buildings (launching soon!)



**Clean Buildings  
Incentive Program**  
Cleaner, More  
Efficient Buildings



**Energy Smart  
Eastside**  
Heat Pump Installation  
and Incentives



**Recycle  
Right**  
Recycling and  
Composting



**ChargeReady  
Bellevue**  
EV Charging  
Planning



**Choose Your  
Way Bellevue**  
Sustainable Transportation  
Information and Resources



**Water  
Conservation**  
Rebates and Free  
Conservation Items

- Suite of Sustainability Services for Multi-Family Properties
- Free to building owners and property managers
- Launching April 2026



# 2027-2028 Biennial Budget

- Tentative dates:
  - June 23 – Public Hearing
  - Sept 17 – Preliminary budget to Council
  - Sept 29- Public Hearing
  - Oct 27 - Public hearing
  - Nov – Budget Adoption
  
- Check **[bellevuewa.gov/budget](https://bellevuewa.gov/budget)** for updates

# How Can You Get Involved

- Champion
- Advocate
- Partner
- Volunteer
- Supporter

## Energy Smart Eastside Volunteering



## Tree Giveaway Volunteering

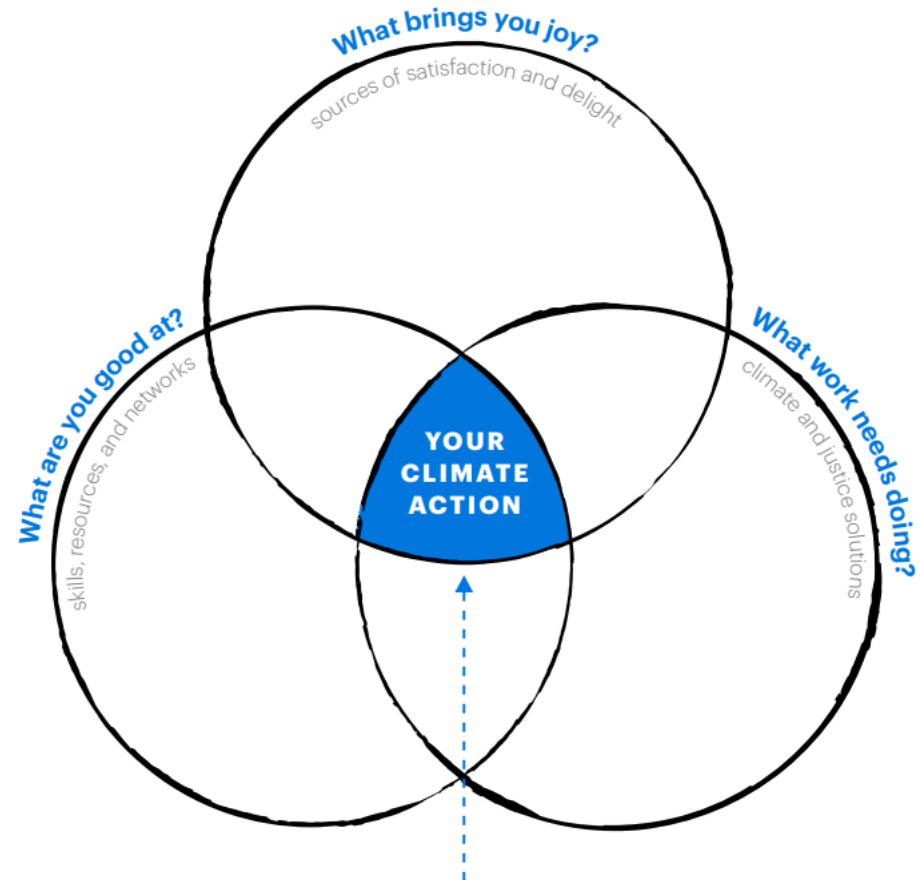


# Your Climate Action



# What is Your Climate Action?

- As you create your venn diagram, think about your community.
- What change would you like to see in Bellevue to make it more sustainable and climate resilient??
- How can the City engage you to support your vision?
- How could you partner with the City to help Bellevue meet its goals?



# Climate Action Needs Climate Leaders

- Climate Leaders Program - relaunching in 2026
- For interested, passionate, and engaged community members
  - Training, education, and City resources for community-wide climate action
- Volunteers to Co-Design a Relaunched Climate Leaders Program
- “By community, for community” approach
- Leave your name and email on your venn diagram

# Coming Up!

- **Mar. 25, 2-5pm:** Eco-America Climate Ambassador Training (zoom)
- **Mar. 28:** Light Rail 2-Line Opening!
- **Apr. 14:** Earth Day City Council Proclamation
- **Apr. 15, at Noon:** ChargeReady Bellevue Webinar
- **Apr. 18, at 11am:** Earth Fest at the Bellevue Botanical Gardens
- **Apr. 20, at 5:30pm-7:30pm, City Hall:** Parking Reform Open House

Sign up for our newsletter:

**[Bellevuewa.gov/environment](http://Bellevuewa.gov/environment)**





# Thank You

**City of Bellevue**  
Sustainable Bellevue Team

