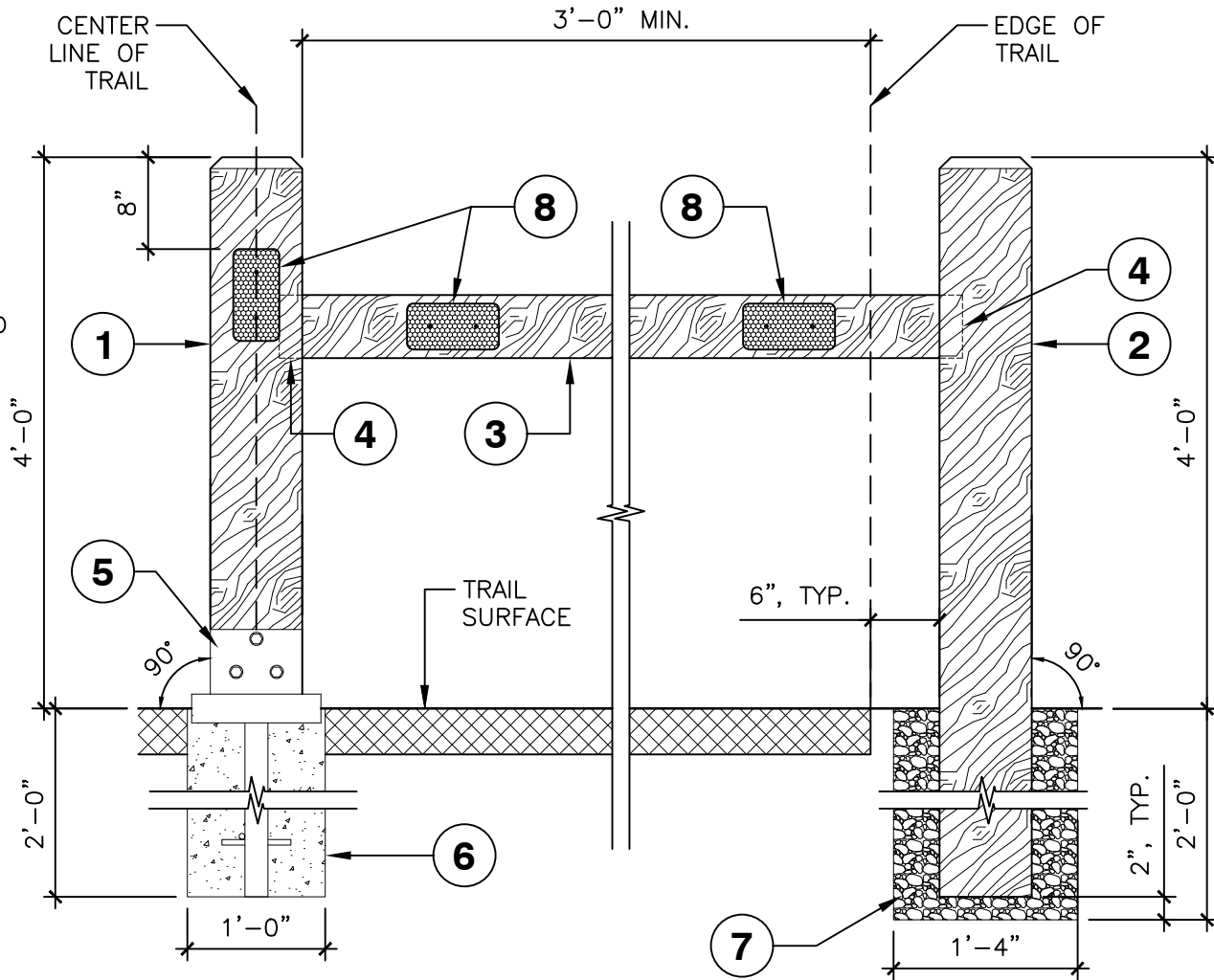


- ① 8x8 (TRUE) REMOVABLE POST WITH 1" CHAMFER AT TOP
- ② 8x8 (TRUE) FIXED POST WITH 1" CHAMFER AT TOP
- ③ 4x6 RAIL
- ④ 3½"x5½"x2" NOTCH FOR RECEIVING RAIL
- ⑤ REMOVABLE SLIDE THROUGH STEEL BRACKET AND ANCHOR, SEE PK-TR-16C AND PK-TR-16D
- ⑥ CONCRETE FOOTING
- ⑦ ⅝" MINUS CRUSHED GRAVEL COMPACTED TO 95% DENSITY
- ⑧ 4"x8" WHITE REFLECTOR. RECESSED ¼" DEEP INTO POST/RAIL, FRONT AND BACK, FACING DIRECTION OF TRAIL ALIGNMENT, SECURED WITH (2) ¾"x ⅛" DIA. SS SQUARE DRIVE WOOD SCREWS WITH FLAT RECESSED HEAD, TYP.

**NOTES:**

- 1. THIS DRAWING SHOWS ONE OF TWO DISMOUNT ASSEMBLIES. THE SECOND ASSEMBLY WILL BE A MIRROR OF WHAT IS SHOWN. SEE PK-TR-16B FOR FULL DISMOUNT LAYOUT.
- 2. ALL WOOD TO BE D.F. #2 OR BETTER, PT ACQ/CBA, OR APPROVED EQUAL.



City of  
Bellevue

TITLE:

**TRAIL - BOLLARD - BIKE DISMOUNT - SECTION**

DRAWING #:	PK-TR-16A
SCALE:	N.T.S.
REVISION DATE:	04-2026
DEPARTMENT:	PARKS