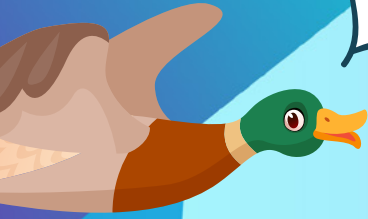




**JAN-APRIL  
PROGRAMS**

**See inside  
for fun  
activities!**



# **KELSEY CREEK FARM**

**Promoting learning opportunities  
in a farm environment**





**Kelsey Creek Farm** offers the community a unique opportunity to step out of urban life and into a working farm experience while preserving its historic character through interpretive displays and educational programs. Our activities promote creativity, hands-on learning, and outdoor exploration for visitors of all ages. Admission is free, though donations are always appreciated. The farm provides a welcoming environment to connect with nature, observe farm animals, and participate in seasonal events.

When visiting any Bellevue park, please keep all dogs and pets on a leash. For the health and safety of our farm animals, kindly follow posted signs restricting pets from the barnyard.



**FARM ANIMALS IN THE PASTURES  
DAILY FROM 9 a.m.-3 p.m.  
365 DAYS A YEAR  
(R) RESIDENT / (N) NON-RESIDENT**

# Farm Fun at Home

## Farm Animal Pen Pal

Are you curious about what Kelsey Creek Farm's animals are up to? Sign up for this program to receive a letter from one of our adorable farm animals! When you sign up, your animal will send you a letter and a photograph of him/herself. If you send a letter in reply to your farm animal, you will receive a customized letter in return. For each purchase, you will receive a picture of your animal, a self-addressed envelope, and up to two letters.

**Ages: Recommended for ages 4-10 but all are welcome**

**Fees: \$5 (R) / \$6 (N)**

**Hours/Dates: This program does not meet in person. You will be mailed up to two letters.**

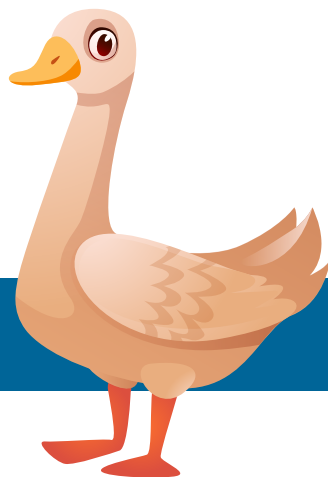
[Farrah the Goat](#)

[Winchester the Pony](#)

[Lilypad the Sheep](#)

[Eleanor the Duck](#)

[Cora the Pig](#)



## Weekday Classes

### Adult/Child

#### Farm Story Time

Come enjoy story time in a farm setting. Each story session will involve a different farm-related theme and include a visit with one of our resident farm animals. The stories will come alive for your children as they see the featured animal characters from the stories in real life. Pre-registration not required. Children must be accompanied by an adult. Space is limited. Doors close when the program begins or when capacity is reached.

**Ages: Recommended for ages 1-5**

**Fees: FREE**

**Hours/Dates: Wed, 10-10:30 a.m.**

Jan 21

Feb 11

## Little Farmers

Enjoy hands-on fun in the barn and barnyard with your little one. Help with barn chores, feed and pet animals, make crafts, enjoy parallel play and take a pony ride. Each session highlights a different set of animals. While some favorite animals and activities will repeat, there will be new experiences to enjoy along the way. Be ready to play indoors and outdoors and to get a bit messy. Siblings under 2 are welcome in front or back carriers. Adult/child teams only, a team is one child and one adult.

**Ages: 2-3**

**Fees: \$78 (R) / \$94 (N)**

**Hours/Dates: Tue, 10-11:30 a.m.**

[Jan 6-20](#)

[Feb 3-17](#)

[March 3-17](#)

[March 31-April 14](#)

## Farm Explorers

Discover farm life through animal care, barn chores, a pony ride and making snacks. This drop-off program features seasonal themes, crafts, stories, and hands-on time with farm animals. Each session highlights a different set of animals. While some favorite animals and activities will repeat, there will be new experiences to enjoy along the way.

**Ages: 4-6**

**Fees: \$96 (R) / \$115 (N)**

**Hours/Dates: Thu, 10 a.m.-12:30 p.m.**

[Jan 8-22](#)

[Feb 5-19](#)

[March 5-19](#)

[April 2-16](#)





## Junior Farmers

Your child will be immersed in farm life in this after-school program. Each class features seasonal themes, crafts, stories, and hands-on time with farm animals. Kids will learn about animal care while interacting with animals in a safe, supportive environment. Each session highlights a different set of animals. While some favorite animals and activities will repeat, there will be new experiences to enjoy along the way.

**Ages:** 7-9

**Fees:** \$78 (R) / \$94 (N)

**Hours/Dates:** Wed, 2-4 p.m.

[Jan 7-21](#)

[Feb 4-18](#)

[March 4-18](#)

[April 1-15](#)



## Weekend Workshops

### A Wetland Wander with Beavers Northwest

Pull on your boots and head out on an excursion with Beavers Northwest and Bellevue Park Rangers! We'll discuss our charismatic wetland neighbors, learn how beavers modify the environment, and observe plants and wildlife while we explore. Please dress for the weather and wear sturdy shoes. This hike's difficulty is rated as easy (1 mile with approximately 50 ft elevation change). Outdoor only. Registration required.

**Ages:** All ages welcome

**Fees:** FREE

**Hours/Dates:** Sat, 10-11 a.m.

[March 14](#)

## Veggies for Valentine's

Do you love farm animals? So do we! We'll celebrate Valentine's Day by making veggie treats for the farm animals! Your child will meet our animals, make a Valentine card for an animal, and receive one in return! Adult/child teams only, a team is one child and one adult.

**Ages: 4-8**

**Fees: \$25 (R) / \$30 (N)**

**Hours/Dates: Sat, 1-2 p.m.**

[Feb 14](#)

## St. Patrick's Celebration

Celebrate St. Patrick's Day at the farm with the animals! We'll dress up a pony in green decorations, go on a treasure hunt to look for leprechaun gold, and do a craft. Adult/child teams only, a team is one child and one adult.

**Ages: 4-8**

**Fees: \$25 (R) / \$30 (N)**

**Hours/Dates: Sat, 1-2 p.m.**

[March 14](#)

## Cowabunga with Cows

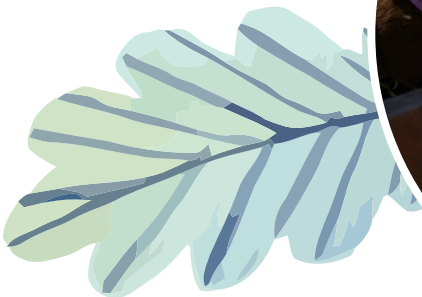
Come meet the cows at Kelsey Creek Farm! We'll feed the cows hay, learn all about cows, and do a cow-themed craft to take home. Adult/child teams only, a team is one adult and one child.

**Ages: 4-8**

**Fees: \$25 (R) / \$30 (N)**

**Hours/Dates: Sat, 1-2 p.m.**

[March 28](#)



## Spring Egg-Stravaganza

Celebrate spring at this egg-themed workshop. We'll feed lettuce to the ducks, and compare the eggs that ducks and chickens lay. We'll pet a bunny and finish off with a fun egg hunt! Adult/child teams only. A team is one child and one adult.

**Ages:** 4-8

**Fees:** \$25 (R) / \$30 (N)

**Hours/Dates:** Sat, 1-2 p.m.

[April 4](#)

# Volunteer Opportunities

## Sheep Shearing Special Event Volunteers

Assist staff with event set up, managing children's activity booths and other event tasks at our annual Sheep Shearing event. This is one of Bellevue's most unique events, running over 40 years. Volunteers gain experience in event operations, customer service, working with children, and teamwork while earning community service hours.

**Ages:** 15+

**Fees:** FREE

**Hours/Dates:** Sat, 9:30 a.m.-5 p.m.

[April 25](#)

## Sheep Shearing Event Clean Up Volunteers

Help us wrap up the annual Sheep Shearing event at Kelsey Creek Farm. Volunteers are needed to assist with breaking down the event activities, ensuring our farm is ready for the next day. This is a great opportunity to earn community service hours, gain hands-on experience in event operations, build team-work skills, and be part of one of Bellevue's most unique events.

**Ages:** 15+

**Fees:** FREE

**Hours/Dates:** Sat, 3-5 p.m.

[April 25](#)





## After School Teen Farm Volunteers

Assist Kelsey Creek Farm staff in providing daily care to our farm animals. Help prepare meals for the animals, clean their living quarters, assist with other farm chores, and help bring the animals back into the barn each day. Teens will learn responsible animal care, job skills, and independence while earning service hours for school.

**Ages: 12-18**

**Fees: \$15 (R) / \$18 (N)**

**Hours/Dates: Wed, 2-4:15 p.m.**

[Jan 7-21](#)

[Feb 4-18](#)

[March 4-18](#)

[April 1-15](#)

## Saturday Morning Teen Farm Volunteers

Join the team at Kelsey Creek Farm and get hands-on experience caring for farm animals! Help bring the animals out to pasture for the day, prepare meals for the animals, clean their living spaces, and assist with other farm chores. Teens will learn responsible animal care, job skills, and independence while earning service hours for school.

**Ages: 15-18**

**Fees: \$15 (R) / \$18 (N)**

**Hours/Dates: Sat, 8:30 a.m.-noon**

[Jan 10-24](#)

[Feb 7-21](#)

[March 7-21](#)

[April 4-18](#)



## Adult Farm Volunteers

Assist Kelsey Creek Farm staff in providing daily care to our farm animals. Help staff bring the animals out to pasture, clean their living quarters, and prepare meals for the animals each day. Volunteers will learn about caring for livestock and about Bellevue's agricultural history while giving back to their community.

**Ages: 18+**

**Fees: Free**

**Hours/Date: Tue, 8:30-10:30 a.m.**

[Jan 6-Feb 24](#)

[March 3-April 14](#)

**Wed, 8:30-10:30 a.m.**

[Jan 7-Feb 25](#)

[March 4-April 15](#)



## Special Events

### Sheep Shearing

Watch the sheep being shorn of their winter coats. Enjoy wool spinning demonstrations, children's crafts, tractor-pulled wagon rides, pony rides, food, animal viewing areas, and more. Free shuttle service available at Wilburton Park & Ride and Bannerwood Sports Park. Please note: no pets allowed on shuttle bus or in the barnyard areas.

No registration needed.

Admission is free, costs vary for food and activities.

**Ages: All ages welcome**

**Fees: FREE**

**Hours/Dates:**

**Sat, 11 a.m.-4 p.m.**

April 25



# Guided Farm Tours

Experience Kelsey Creek Farm with a tour designed specifically for groups. Choose from various year-round and seasonal themes. Guided farm tours are available weekdays and are approximately 45 minutes in length. Each tour includes time with a variety of farm animals and a group activity led by a member of our farm staff. Animals included in tour and group activities vary based on tour themes. Please note animals available for interaction during the guided tour may change without notice based on individual animals' health and well-being.

**Ages:** most tours appropriate for children ages 2+ (see below for exceptions). Tour content is adjusted to accommodate the age of the audience.

## Kids on the Farm Group Tour

Available year-round

Explore our historic dairy farm with hands-on fun as you meet our farm animals. Learn interesting animal facts and local history as you travel back in time to when Bellevue was mostly farmland and forest. Go into the animal barn to see where the animals sleep at night and work on barn "chores" with child-sized pails and rakes.



## Fuzzy Farm Friends Group Tour

Available year-round

Have you ever wondered where yarn and wool sweaters come from? How does a sheep give us a pair of warm wool socks? Meet the Kelsey Creek Farm sheep and practice the skill of carding wool all while learning about sheep and fiber processing. Children will create a fuzzy sheep craft to take home.

## Pioneers on the Farm Group Tour

Available year-round (recommended for ages 4+)

Imagine life in Bellevue in the 1880s. Children spend time looking around the Fraser cabin, built in 1888, and learning about what life was like for the pioneers when they arrived in the Bellevue area. Practice pioneer living history skills and go on a farm walk to learn how some of our farm animals would have been used by the pioneers.

## Springtime in the Barnyard Group Tour

Available mid-May-mid-June only

Welcome springtime in the barnyard with a hands-on tour among our favorite animals. Learn about their care, then get dirty in the garden planting and watering seeds.

## Fall on the Farm Group Tour

Available October only

Experience harvest season on the farm! Visit with some of our friendly farm animals and watch them eat a pumpkin treat. Then finish up by enjoying a story in our indoor off-the-vine pumpkin patch. Pumpkins are available for purchase for an additional fee.



# Birthday Parties

Kelsey Creek Farm offers a variety of party packages to make your child's day special. All party packages are approximately two hours long. Each party begins with a guided tour and group activity led by a member of our farm staff. Activities and crafts vary based on party themes. The guided activity time is followed by a one-hour room rental for cake and presents. Please note: animals available for interaction may change without notice based on individual animals' health and well-being

Room locations may vary, but all party locations are indoor and include:

- ◆ 3 preschool-height tables (6 feet long by 2.5 feet wide) with children's chairs
- ◆ A refrigerator/freezer, microwave
- ◆ Kitchen sink and trash cans
- ◆ A restroom with hand-washing soap and paper towels

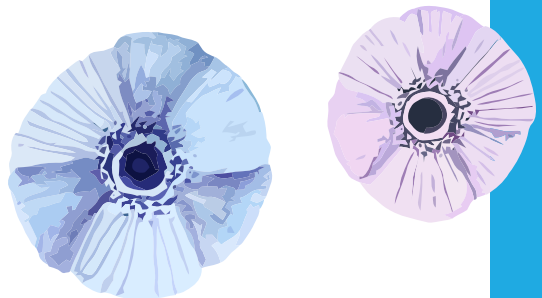
Maximum capacity for all parties is 30 people (number includes adults and children) and has been set to respect facility codes, the safety and well-being of the animals, and to ensure guest enjoyment.

## Farm Birthday Party

Celebrate your child's birthday with a visit to our historic farm. Make memories meeting farm animal friends. Birthday party package includes an approximately 45-minute farm tour and farm-themed craft, followed by one hour of room rental.

**Ages: 2-11**

**Fees: \$375 (R) \$450 (N)**



## Bunny Birthday Party

Celebrate your child's birthday by visiting the farm and meeting our friendly bunny. Enjoy a farm tour, a bunny craft, and extra time visiting the bunnies. Birthday party package includes approximately 45-minute farm tour and bunny themed craft, followed by one hour of room rental.

**Ages: 2-11**

**Fees: \$375 (R) \$450 (N)**

## Pony Birthday Party

Celebrate your child's birthday by visiting the farm and meeting one of our ponies. Enjoy a farm tour, pony craft, and special time with the birthday pony. Birthday party package includes an approximately 45-minute farm tour and pony-themed craft, followed by one hour of room rental. Please note: this party does NOT include a pony ride.

**Ages: 4-11**

**Fees: \$375 (R) \$450 (N)**





# Rentals

For more rental information including pricing and room specs, visit [BellevueWA.gov/kelsey](https://BellevueWA.gov/kelsey).

## Outdoor Rentals

### Kelsey Creek Farm Picnic Shelter

Rent Kelsey Creek Farm's Picnic Shelter for your next event! This covered picnic shelter has a capacity of 75 people and includes 6 picnic tables and 2 charcoal grills. To reserve visit our online catalog at [register.bellevuewa.gov](https://register.bellevuewa.gov). Questions?

Email [kelseycreekfarm@bellevuewa.gov](mailto:kelseycreekfarm@bellevuewa.gov).



## Indoor Rentals

Looking for space to host a party, class, or meeting? Kelsey Creek Farm features several indoor rental spaces including a farm house with a 760 square-foot community room and kitchen space as well as a 900 square-foot room in the historic 1943 barn. The unique farm setting makes these spaces perfect for memorable events.

Both rental spaces can be reserved seven days a week, and these spaces easily accommodate groups large or small with rooms for groups up to 30 people. To reserve, send an email with requested dates and times to [kelseycreekfarm@bellevuewa.gov](mailto:kelseycreekfarm@bellevuewa.gov).

### Kelsey Creek Farm Room (Education Barn)



### Kelsey Creek Farm House



# Scholarships

Bellevue Parks & Community Services strives to make program opportunities available to all interested individuals who live in Bellevue, regardless of income. We provide financial assistance to those who might not otherwise be able to participate. Scholarships may be granted for the entire class fee or may provide a percentage discount, depending on individual circumstances.

Visit [BellevueWA.gov/city-government/departments/parks/programs/scholarships](https://BellevueWA.gov/city-government/departments/parks/programs/scholarships) for information and application.





## FARM HISTORY

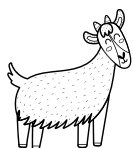
The farm's history began in 1921, when the Duey Family rented 190 acres and began delivering cream and butter stamped with the name Twin Valley Dairy. In August of 1933 the original barn burned. Mr. Duey, a skilled carpenter, along with some hired hands, rebuilt the barn in two weeks. Today, this barn is the smaller of the two barns and is called the Animal Barn. Mr. Duey also built the Red Barn, originally used as a milk house.

The second dairy barn was built in 1943–44 by Mr. Michaels, the new owner, (this is the north barn now known as the Education Barn) and the dairy herd was increased in size. After the end of WWII, he sold the farmstead to Ray and Nettie Fisher. The Fishers phased out the dairy operation and began raising Hereford beef cattle. They built the current farmhouse in 1954 and moved to live on the property.

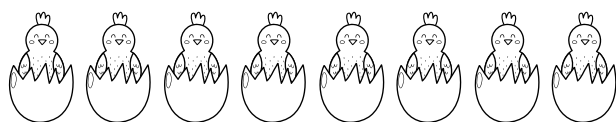
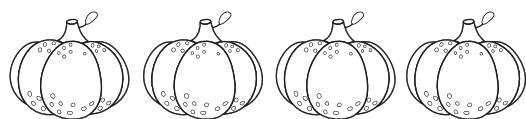
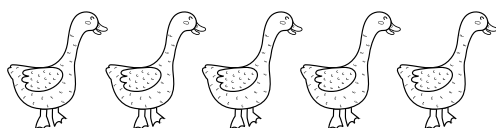
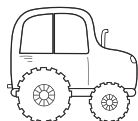
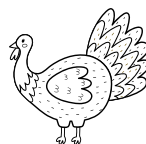
In 1968 neighbors to the farm began a movement to petition the Bellevue City Council to purchase the property and secure it as a public park. The neighbors' petition succeeded, and the city negotiated with the Fisher family to purchase the 80 acres, including the farmhouse, barns and outbuildings. The Fishers sold their farm property to the City at a price much reduced from what they knew that they could get from developers. They did so because they believed in preserving the beauty and legacy of the agricultural buildings and the land.

In 1972 the oldest barn was modified to house an assortment of farm animals for public viewing. The other, larger barn, commonly referred to as the Education Barn, was remodeled inside and used to accommodate a variety of community programs, including children's day camps, art classes, and farm-themed classes, to name just a few.





# HOW MANY?



1

2

3

4

5

6

7

8

9



# ON THE FARM

wordsearch puzzle



BARN

COW

FARMER

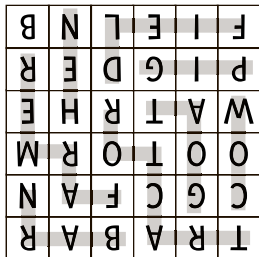
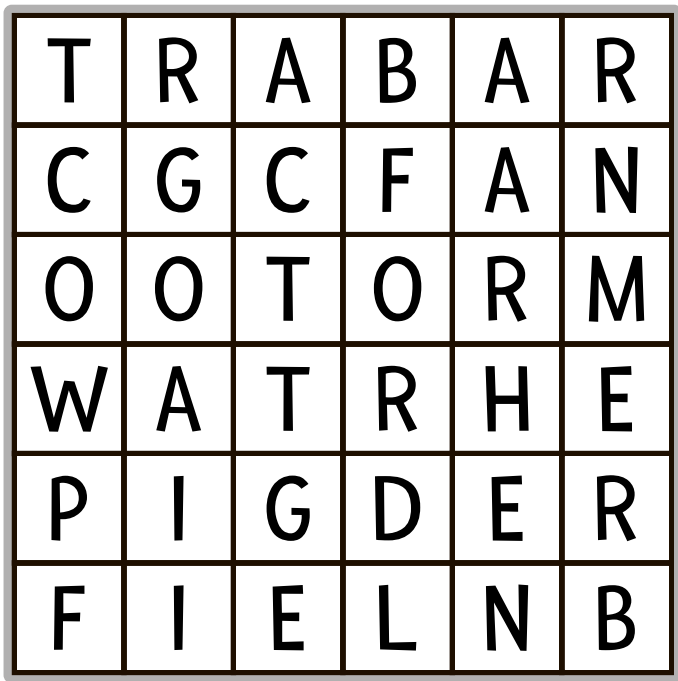
FIELD

GOAT

HEN

PIG

TRACTOR



# REGISTER ONLINE!

[register.bellevuewa.gov](https://register.bellevuewa.gov)

Scholarships available  
for many programs.

(R) RESIDENT (N) NON-RESIDENT



Kelsey Creek Farm

410 130th Pl SE | Bellevue, WA 98005

425-452-7688

[KelseyCreekFarm@bellevuewa.gov](mailto:KelseyCreekFarm@bellevuewa.gov)



For alternate formats, interpreters, or reasonable modification requests please phone at least 48 hours in advance 425-452-2020 (voice) or email [sstenslie@bellevuewa.gov](mailto:sstenslie@bellevuewa.gov). For complaints regarding modifications, contact the City of Bellevue ADA, Title VI, and Equal Opportunity Officer at [ADATitleVI@bellevuewa.gov](mailto:ADATitleVI@bellevuewa.gov).