



City of Bellevue

# New Neighborhood Park in BelRed

[BelRed Neighborhood Park | City of Bellevue](#)

**Community Meeting #1 | May 7, 2026**

# AGENDA



Welcome and Introductions



## Presentation

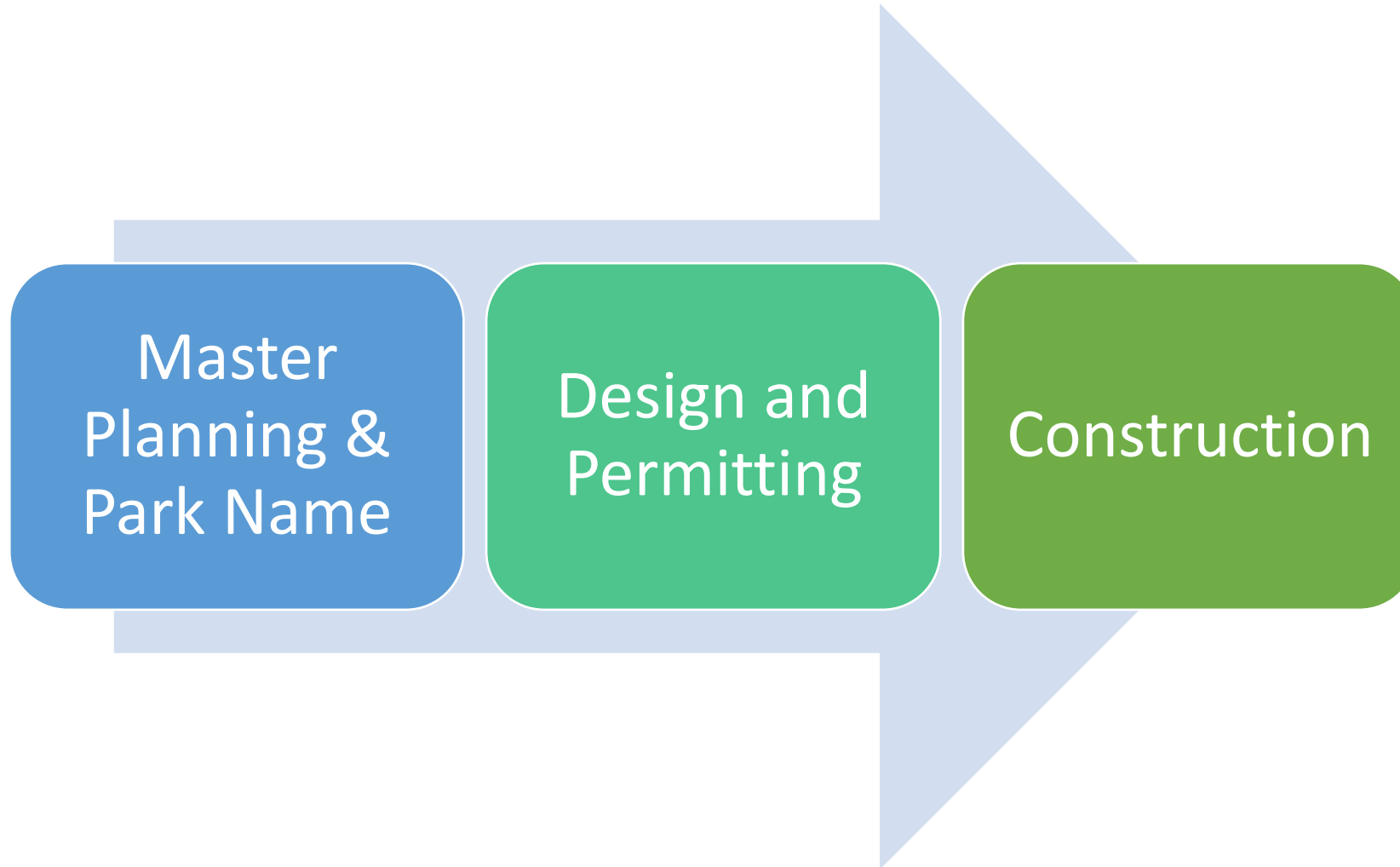
- Park Development Process
- Estimated Project Timeline
- Neighborhood & Site Background
- Park Visioning



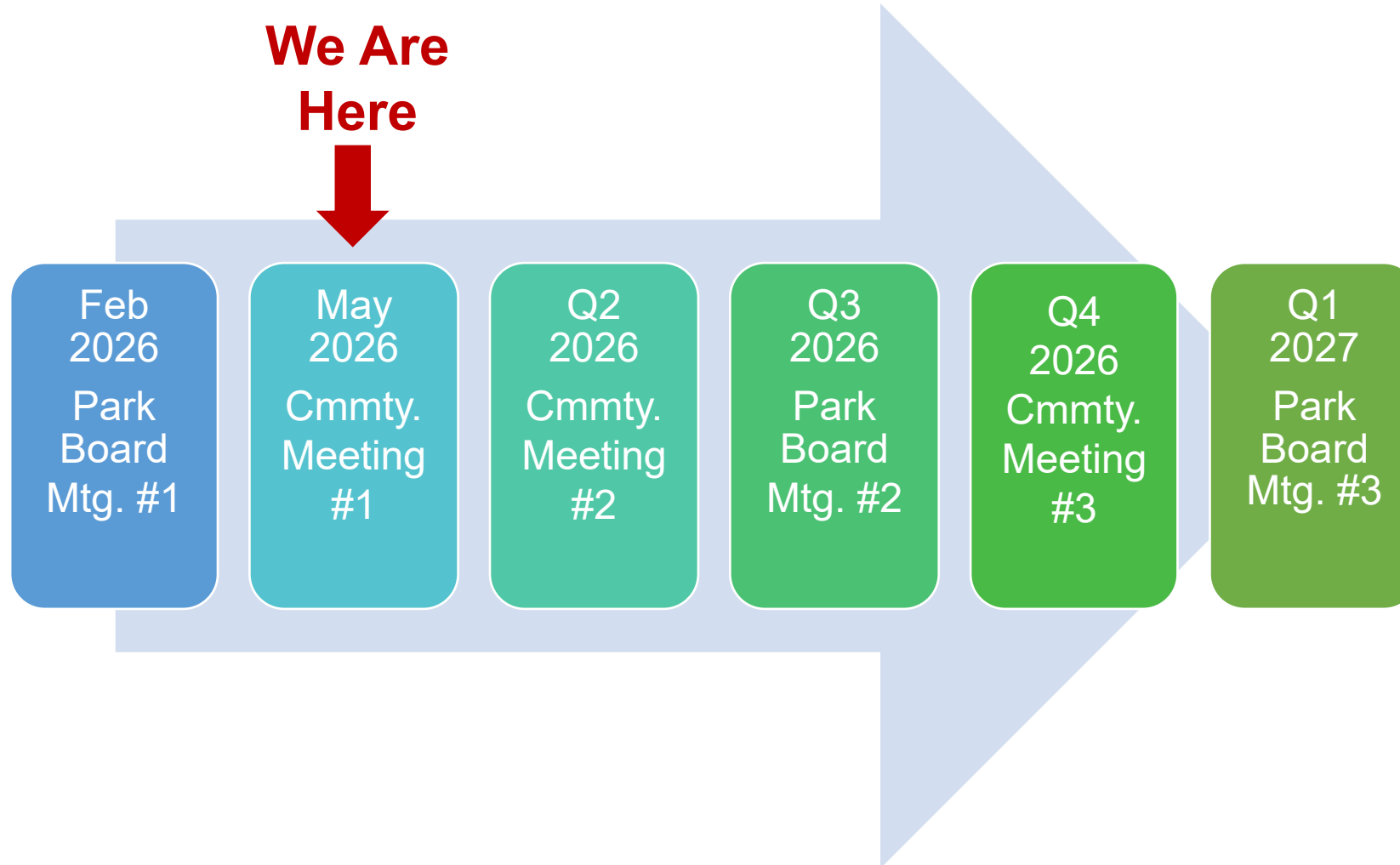
Discussion, Comments and Questions

# Park Development Process

---



# Estimated Planning Timeline



# A Neighborhood Park for BelRed



# Why Are We Here?

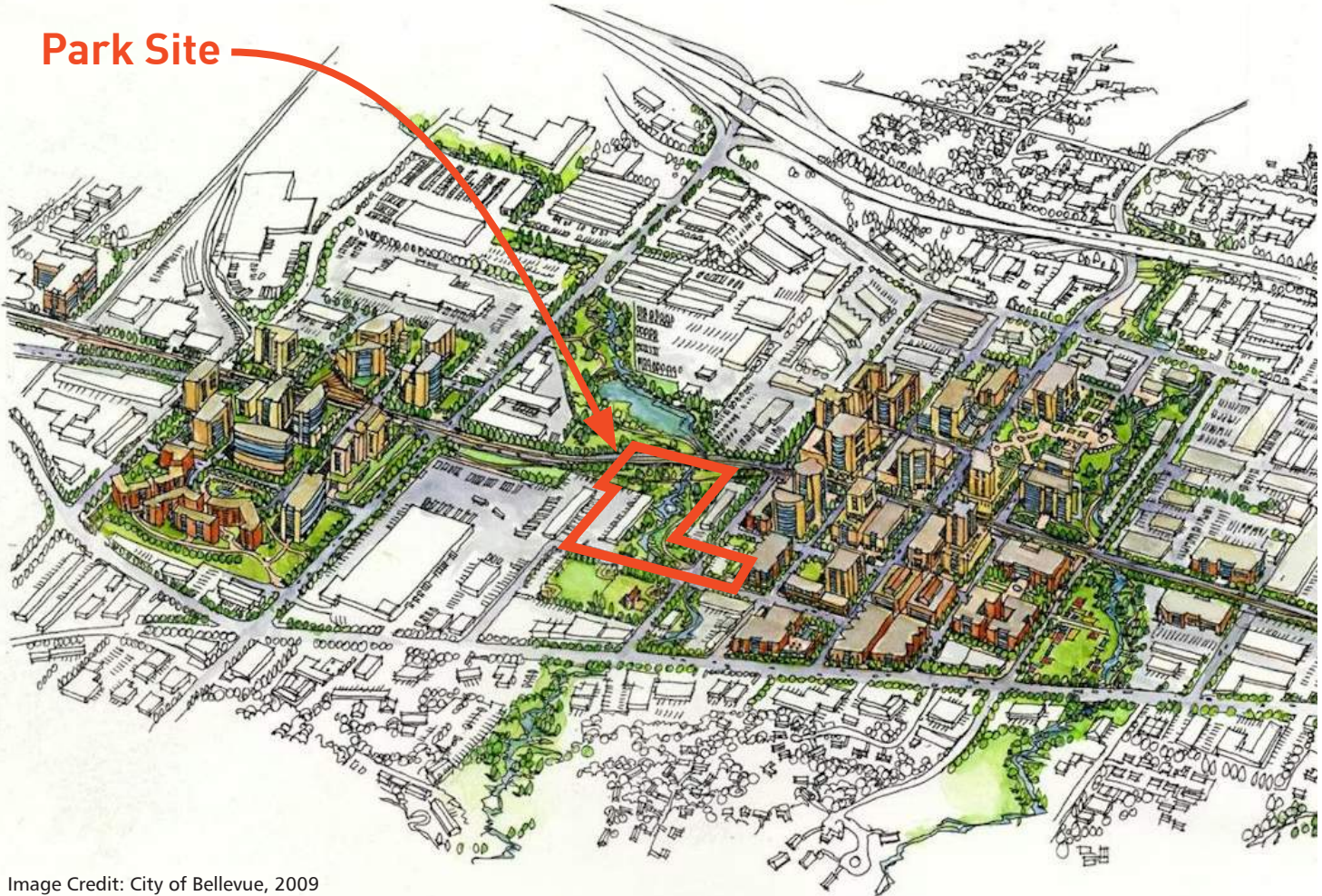
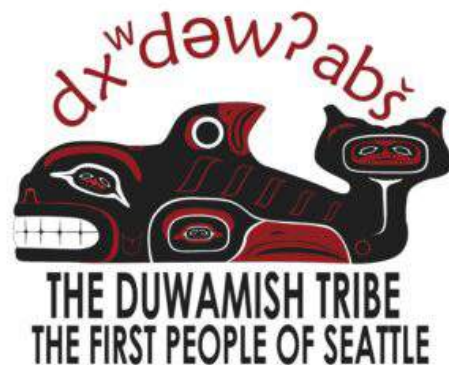


Image Credit: City of Bellevue, 2009

## BelRed Subarea Plan 2009, updated 2024

“Departing from its low-intensity industrial past, BelRed will become a model of smart growth and sustainability illustrating the land use pattern needed in this era of global climate change.”

# BelRed's Past: Pre-Settlement



# BelRed's Past: Mixed Forests and Agriculture



Image Credit: Eastside Heritage Center

Agriculture 1922



Image Credit: King County Imap

BelRed 1936

# BelRed's Past: Light Industry

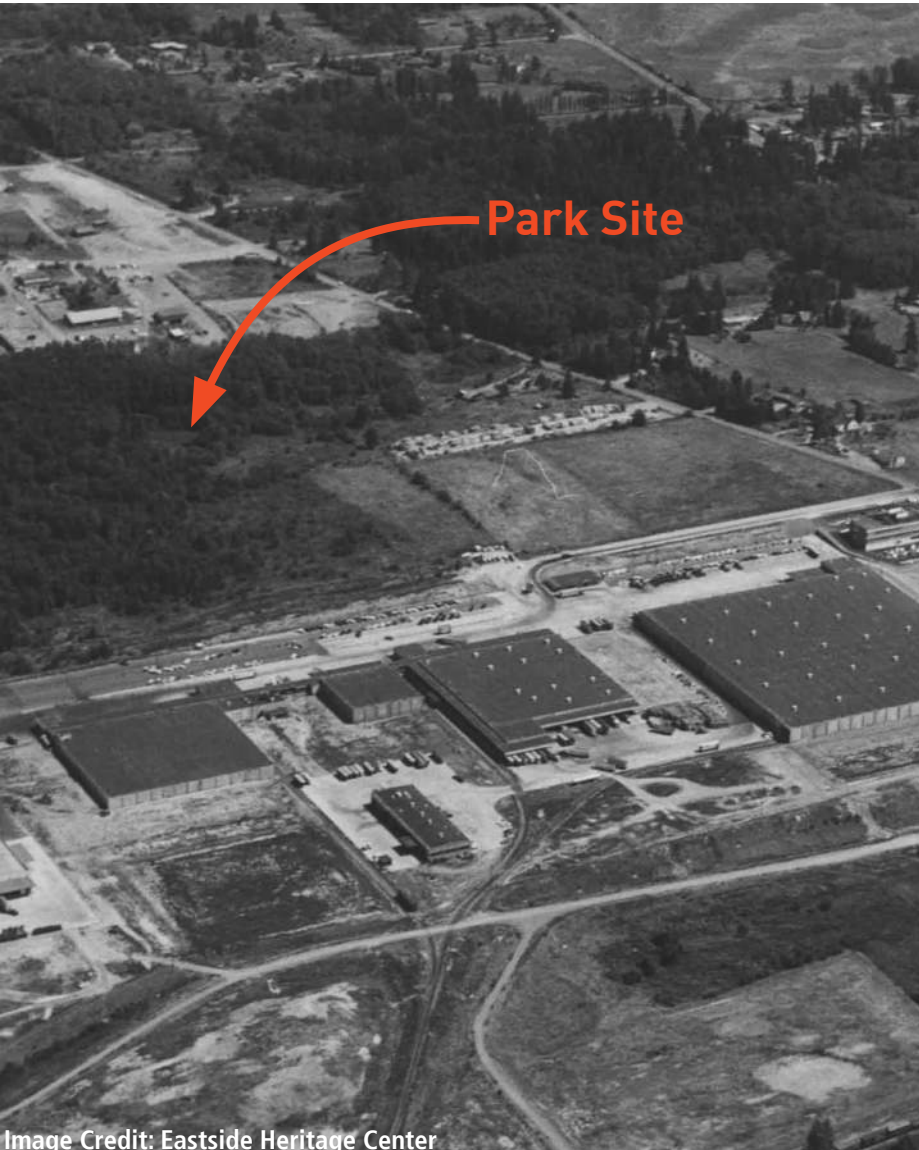


Image Credit: Eastside Heritage Center

Safeway Distribution Facility 1960's



Image Credit: King County Imap

BelRed 1998

# The Future



Image Credit: City of Bellevue

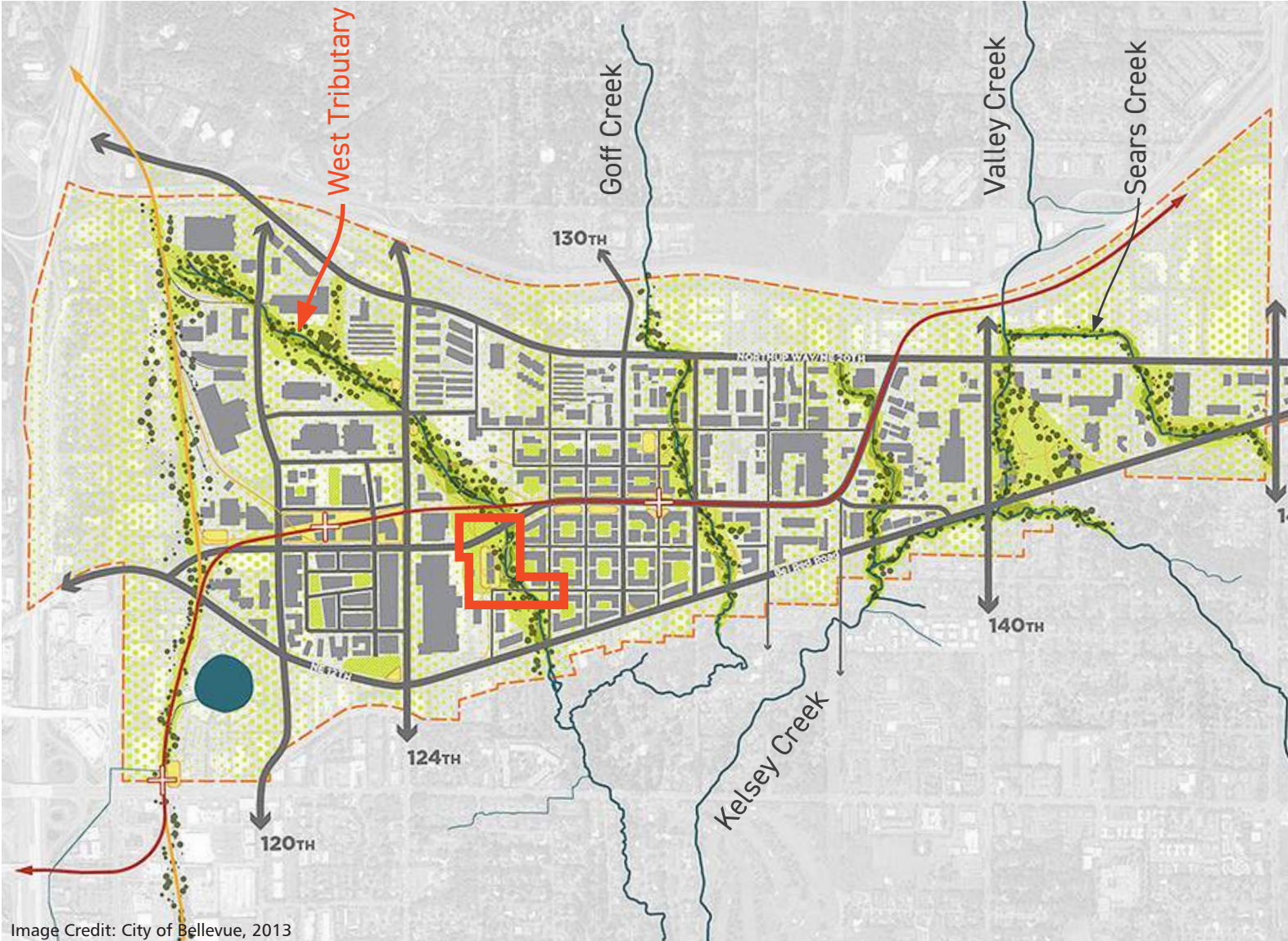
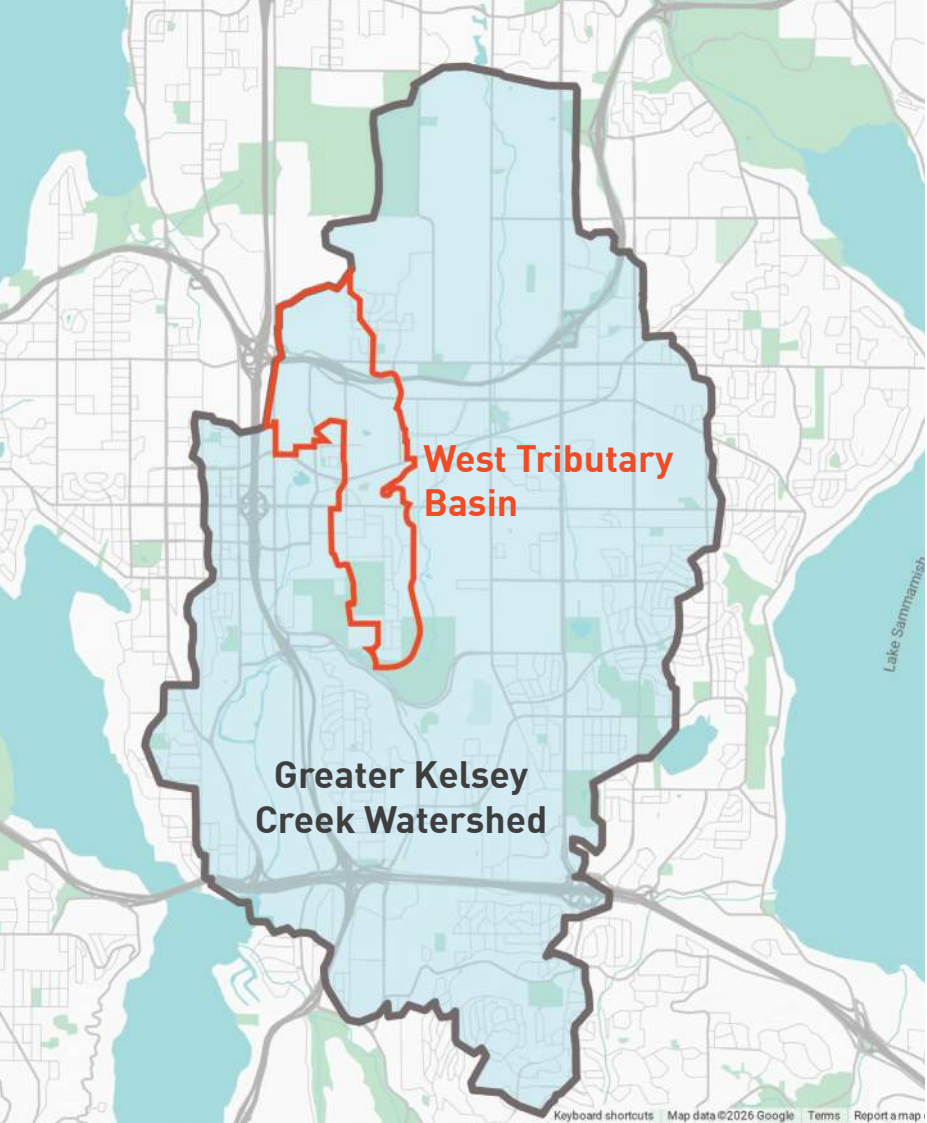


Image Credit: City of Bellevue, 2013

## Corridors and Nodes

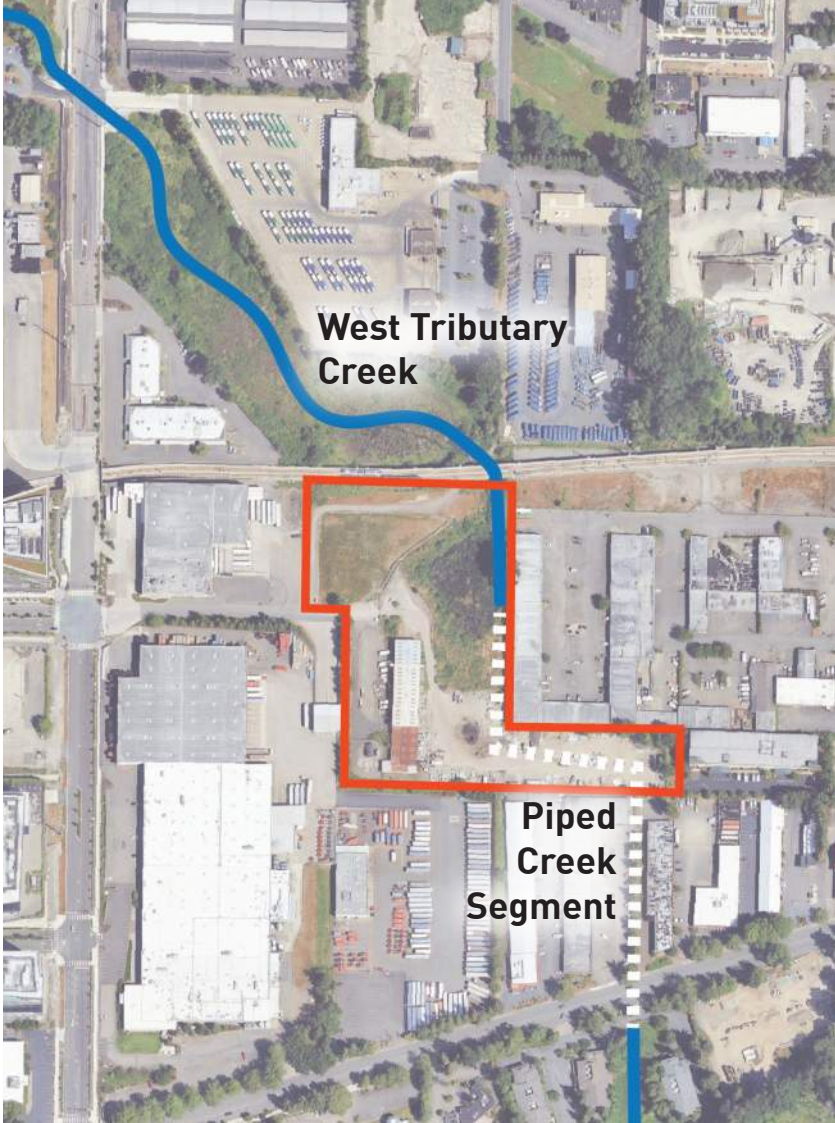
# West Tributary of Kelsey Creek



Greater Kelsey Creek



West Tributary Basin



West Tributary Creek at Park

# West Tributary Wetlands



Wetland on Park Site



# Trail Planning



West Tributary Regional Pond, North of Park Site



# Sound Transit Corridor



Elevated Track at Park



# How do you get here?



Spring Boulevard at Park



# Spring Boulevard Project

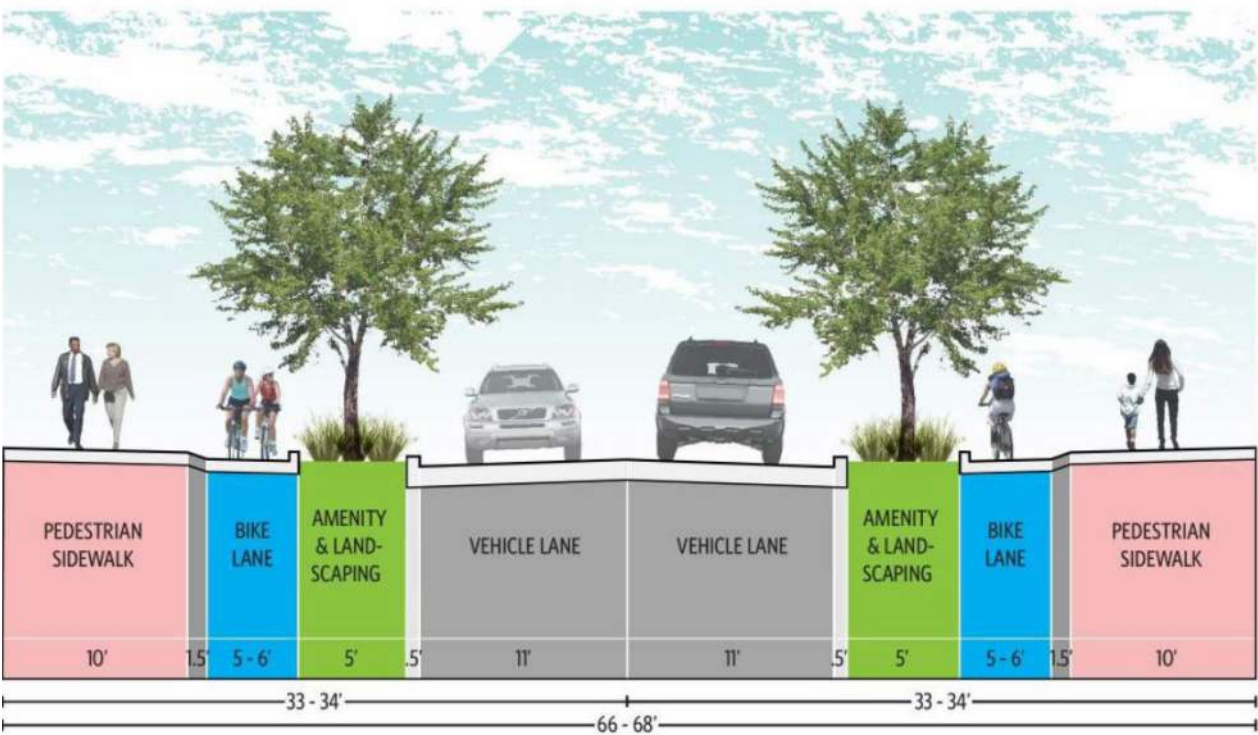
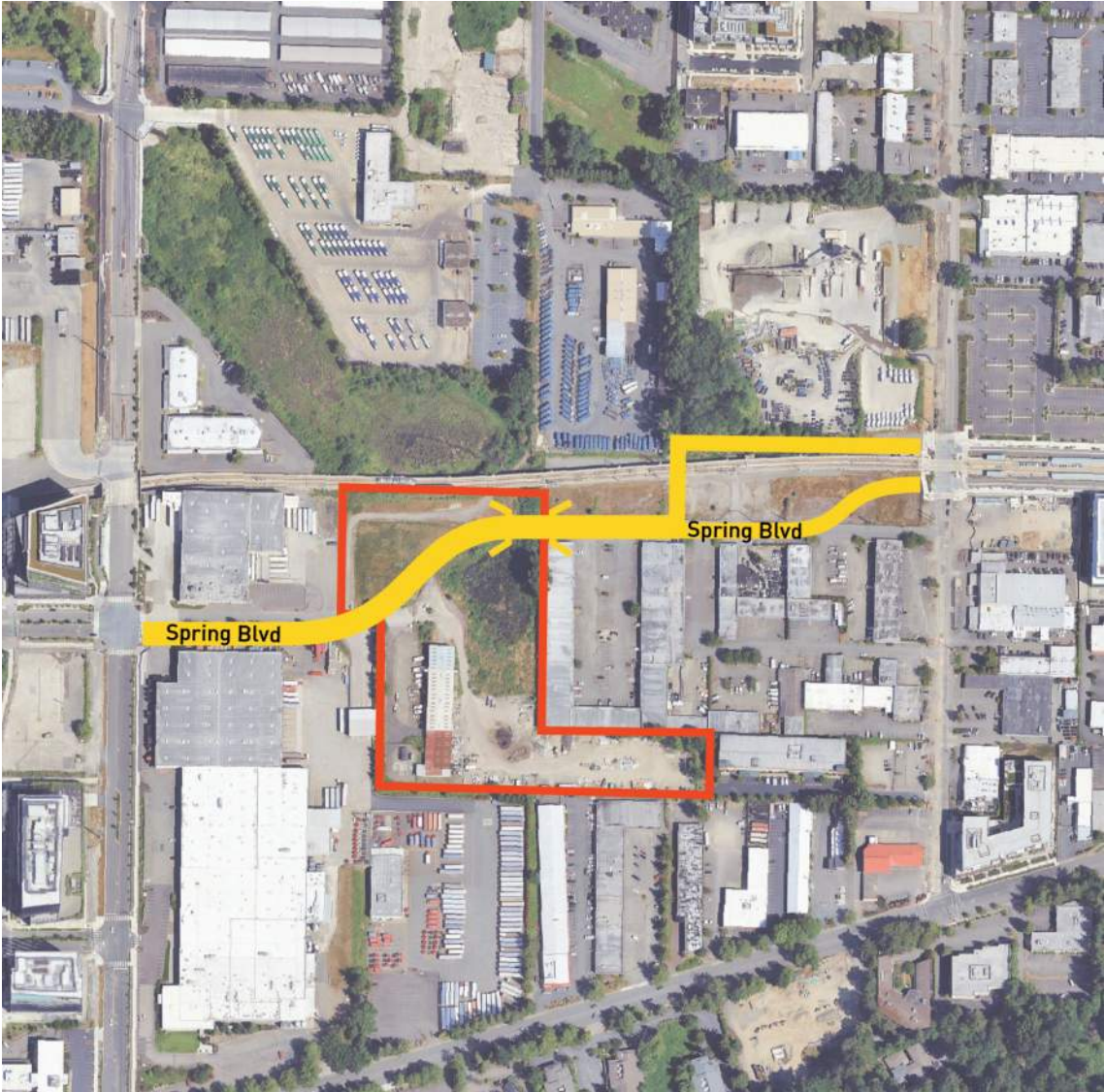


Image Credit: City of Bellevue

Planned Spring Boulevard Section



Spring Boulevard Alignment Through Park

# Future Street Network and Zoning Density

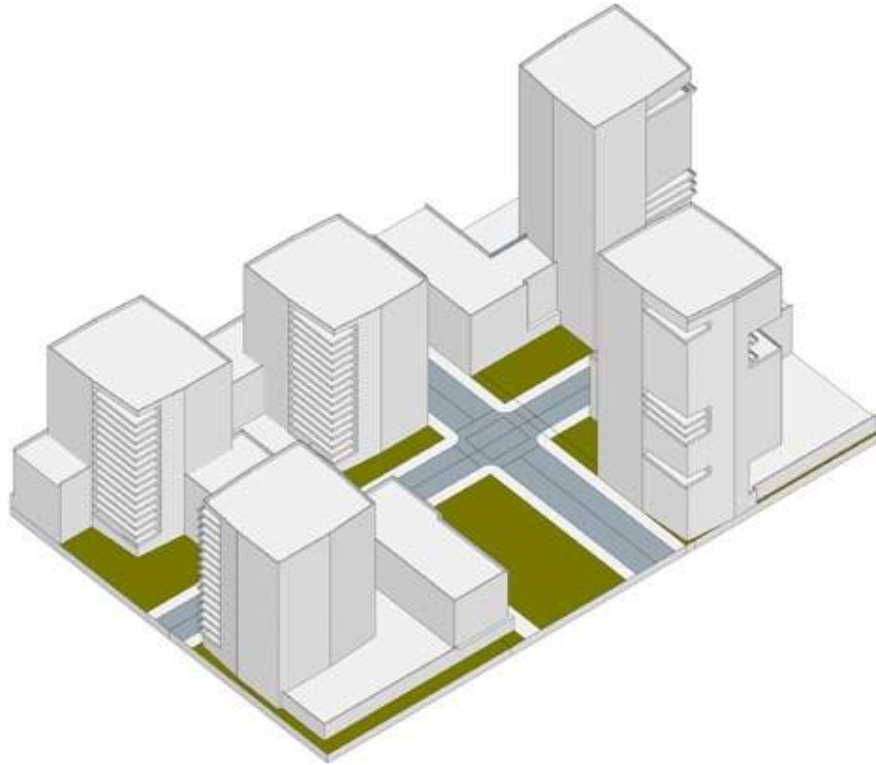
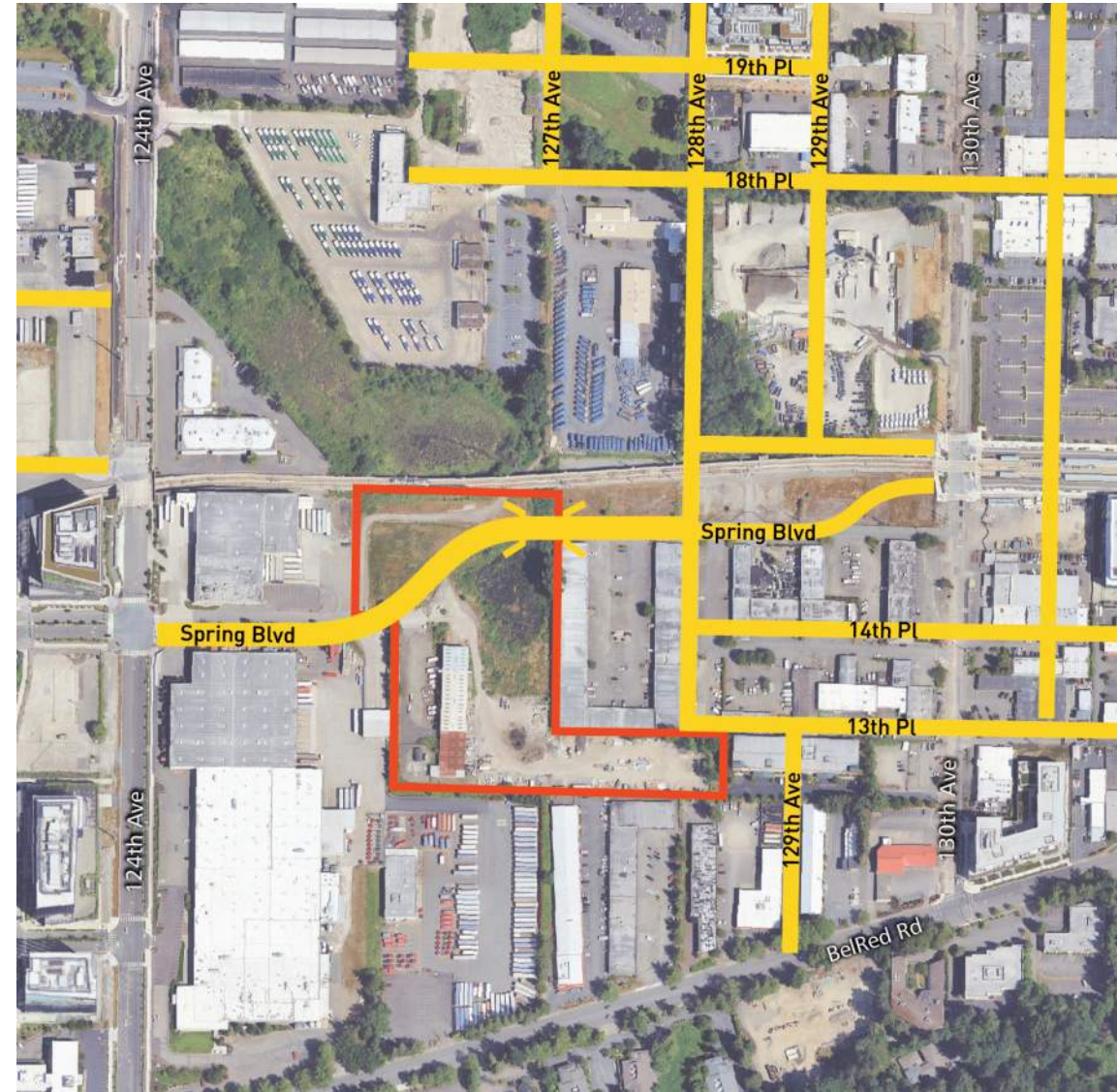


Image Credit: City of Bellevue, 2024

Draft Zoning: Highrise Mixed Use



Draft Road Network

# Photos: North Site



# Photos: Existing Warehouse



# Photos: South Site



# Opportunities: Nature Experiences & Habitat



Image Credit: Delaware Department of Natural Resources



Image Credit: Ten X Ten Studio

# Opportunities: Play for All Ages



Image Credit: <https://flic.kr/p/6WxYrd>



Image Credit: Sweet Lime Photo



Image Credit: Kompan Inc



Image Credit: Sweet Lime Photo

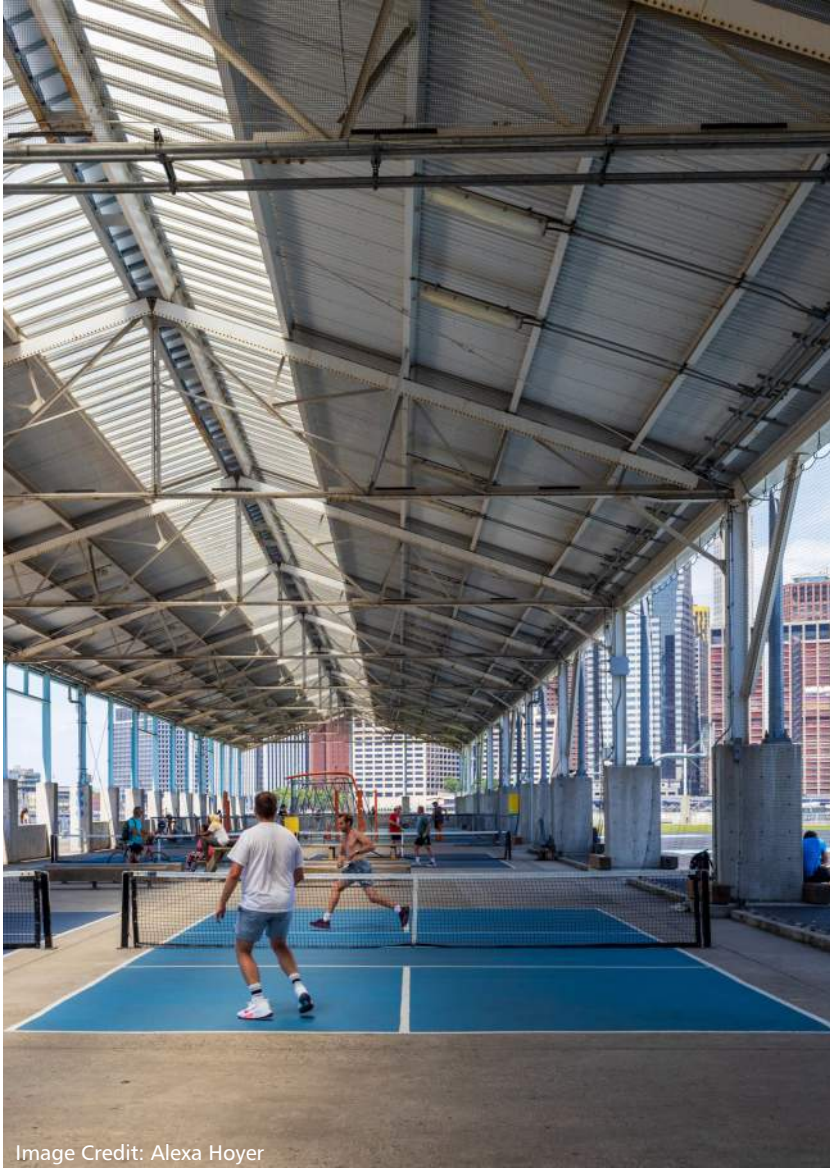


Image Credit: Alexa Hoyer

# Opportunities: Recreation



Image Credit: Simon Vine, Dependable Productions and re-form



Image Credit: Kompan Inc



Image Credit: radrevier-ruhr/Jochen Tack

# Opportunities: Gathering and Events



Image Credit: Alan Brandt



Image Credit: Adrian Frentescu



Image Credit: Zhewei Su, Xi Tang, Feimin Song



Image Credit: Go! Latinos Magazine



Image Credit: Oxnard Shores Neighborhood Council



# Opportunities: Arts



Image Credit: Brand Kiosk



Image Credit: Mike Houck



Image Credit: K&K Custom Fabrication and Welding



Image Credit: Okuda-San Miguel



Image Credit: Mehmet Ali Uysal

# Community Feedback

Please join us at a display station and share your comments, questions, or concerns.

Website: [BelRed Neighborhood Park | City of Bellevue](#)

Zarrian Smith, Project Manager

Phone: (425) 452-4883

Email: [zsmith@bellevuewa.gov](mailto:zsmith@bellevuewa.gov)

**Thank you for joining us this evening!**