

# Activity Guide

Classes, programs & resources



Spring/Summer 2026  
May-August



Bellevue Parks &  
Community Services

Resident registration opens Monday, March 30  
Non-resident registration opens Monday, April 6  
**[register.bellevuewa.gov](https://register.bellevuewa.gov)**

# Table of Contents

3	Welcome Message
6	Low-cost & No-cost Programs
10	Early Learning
13	Youth and Teen
24	Family Activities
30	Adult Activities
41	Adaptive Recreation
45	Older Adult Activities
51	Community Programs at North Bellevue Community Center
55	Forms
64	Parks Facilities

**Fresh air and  
fresh updates!  
Subscribe to our  
digital newsletter.**

Get the latest on classes, events, volunteer opportunities and park happenings with our Parks & Community Services eNews. It's free, easy and delivered straight to your inbox each month.

Sign up at [BellevueWA.gov/subscribe](http://BellevueWA.gov/subscribe)



# Welcome to the Spring/Summer 2026 Activity Guide

Spring and summer in Bellevue bring longer days, fresh energy and more opportunities to get outside, try something new and spend time together. This guide is your starting point for discovering classes, programs and community experiences happening across Bellevue parks, community centers, recreation facilities and natural areas from May through August.

Bellevue Parks & Community Services is made up of dedicated teams across parks, recreation, arts, culture and community services. Together, we create spaces and experiences that help build a healthy community. Our mission is to connect people to exceptional parks, natural areas and programs that support well-being and belonging. Inside these pages you will find opportunities for every age and interest, from youth activities and family events to fitness, arts, nature programs and lifelong learning.

We believe access to recreation should be available to everyone. Financial assistance is available to help remove barriers so more Bellevue community members can participate and feel welcome in our programs and spaces. We look forward to seeing you in Bellevue's parks, community centers and programs this spring and summer.

## Bellevue Beach Parks Lifeguards on duty at select locations

Meydenbauer Bay Park | Chism Beach Park  
Newcastle Beach Park  
June 27-September 7, 12-7 p.m.

Enatai Beach Park | Clyde Beach Park  
July 4-August 16, 12-7 p.m.

[BellevueWA.gov/beach-parks](http://BellevueWA.gov/beach-parks)

The City of Bellevue, in partnership with No More Under, provides free life jacket loaner stations from late June through Labor Day at the following locations:  
SE 40th St Boat Launch, Newcastle Beach Park, Enatai Beach Park, Chism Beach Park, Meydenbauer Bay Park and Clyde Beach Park.



## Bellevue City Council

Mo Malakoutian, Mayor

Dave Hamilton, Deputy Mayor

Vishal Bhargava

Naren Briar

Jared Nieuwenhuis

Lynne Robinson

Claire Sumadiwirya

## Parks & Community Services Board

Rowena Clima, Chair

Michelle Valverde, Vice-Chair

Steve Chianglin

Eileen Chou

Paul Clark

Eric Drever

Elizabeth Kronoff

## Human Services Commission

Angela Phan, Chair

Chris Hays, Vice-Chair

Jaskaran Singh Sarao

Delfina Gonzalez

Fitri Rashid

Olga Perelman

Police Major Ellen Inman, Ex-Officio

## Food & Refreshments

Programs listed in this brochure may include a food or beverage refreshment. Please contact your Program Area site for more information; phone numbers are available in this brochure. Food and beverage cost, when applicable, is included in the cost of the program.

## City of Bellevue Tax ID Number / 91-6007020

Every attempt has been made to ensure that information in this brochure is accurate at the time of publication. For the most up-to-date information on activity availability, pricing, dates, times, and location, please visit our online registration system at [register.bellevuewa.gov](http://register.bellevuewa.gov).

Program availability, minimum and maximum enrollment, location, times, dates, and health screening requirements are all subject to change based on the latest guidance from local, state, and national public health authorities.

### Questions or comments about this publication?

Bridgette Larsen, Parks Marketing Coordinator, [blarsen@bellevuewa.gov](mailto:blarsen@bellevuewa.gov).

## Equal Opportunity Statement

The City of Bellevue assures that no person shall on the grounds of race, color, or national origin (including limited English proficiency), as provided by Title VI of the Civil Rights Act of 1964 and related statutes, be excluded from participation in, be denied the benefits of, or be otherwise discriminated against under any City of Bellevue program or activity. Any person who believes their Title VI protection has been violated may file a complaint with the City of Bellevue's Human Resources Director. For additional information regarding Title VI complaint procedures and/or information regarding our non-discrimination obligations, please contact the City of Bellevue's ADA, Title VI and Equal Opportunity Officer at [ADATitleVI@bellevuewa.gov](mailto:ADATitleVI@bellevuewa.gov).

## Bellevue Parks & Community Services

PO Box 90012 | Bellevue, WA 98009-9012

The Bellevue School District does not sponsor nor endorse this event and/or information, nor does the district assume responsibility for it. In consideration of the privilege to distribute materials, the Bellevue School District will be held harmless from any cause of action filed in any court or administrative tribunal arising out of the distribution of these materials, including costs, attorney's fees and judgments or awards.

**Information**

정보  情報  
 सूचना  資料  
**425-452-6800**  
 సమాచారం Thông Tin  
 Información معلومات  
 اطلاعات Информация

# Your Bellevue Park Rangers

Bellevue Park Rangers help connect the community to local natural resources through education, stewardship and hands-on experiences in nature.

Bellevue Park Rangers are year-round stewards of parks and open spaces. They help care for natural areas, support visitors and keep parks welcoming and enjoyable for everyone. You may see rangers:

- Answering questions and helping park visitors
- Supporting responsible use of parks and trails
- Responding to concerns like dogs, parking, abandoned vehicles, graffiti and vandalism
- Helping protect sensitive habitats, waterways and wildlife, including Phantom Lake

## Where to find us:

- Lake Hills Greenbelt Ranger Station
- Lewis Creek Park Visitor Center
- Mercer Slough Environmental Education Center

## Rangers lead a wide range of programs for all ages, including:

- Ranger programs at Lake Hills Greenbelt, Lewis Creek Park and Mercer Slough
- Evening Wildlife Walks
- Late Lake Loop
- Sensory Stroll
- Lakeside Bat Night
- Story and Stroll at Mercer Slough
- Twilight Stroll
- Lake Hills Greenbelt Ranger Walk
- Ranger-led Hike at Lewis Creek Park
- Tiny Trailblazers



Pre-registration required.

Sign up for programs with our park rangers at [register.bellevuewa.gov](https://register.bellevuewa.gov)

# LOW-COST & NO-COST PROGRAMS

Bellevue Parks & Community Services offers a variety of low-cost and no-cost programs for all ages!

## **Bellevue Aquatic Center**

Lap Swim  
Lifeguard Skills Clinic  
Open Swim

## **Bellevue Botanical Garden**

Docent-Led Tours

## **Bellevue Skate Park**

Open Skate Sessions  
Skate Park Intro Monthly Pass

## **Bellevue Youth Theatre**

Amplify Program  
Summer Auditions (residents free)  
Cinderella: Enchanted Edition  
Romeo and Juliet  
The Jungle Book

## **Crossroads Community Center**

Afterschool Makerspace  
Book Group  
Community Nights at Crossroads  
Domino Toppling  
Drop-in Sports  
Dungeons and Dragons  
Games Room  
Girls Who Write  
Indoor Kite Flying  
Indoor Play  
Ladies Musical Club Concert Series  
Line Dancing  
Open Art Studio  
Women's Self Defense Workshop  
Gardening  
Master Gardener  
Workshop & Events

## **Highland Community Center**

Adaptive Drop-in  
Wheelchair Basketball  
Aloha Picnic Event  
Barn Dance Event  
Drop-in Adult Basketball  
Family Movie Time

Fitness and Exercise Room  
(Adaptive Equipment)  
Highland Times  
Indoor Play

## **Kelsey Creek Farm**

Adult Farm Volunteers  
Saturday Morning Teen  
Farm Volunteers

## **Nature & Wildlife Programs**

Canoe Mercer Slough  
Evening Wildlife Walk  
Lakeside Bat Night  
Late Lake Loop  
Story and Stroll at Mercer Slough  
Ranger Walks  
Tiny Trailblazers  
Twilight Stroll  
World Migratory Bird Dayevent

## **Ranger Programs at Lake Hills Greenbelt**

Rascally Rabbits  
Wild Predators in the Park  
Sensational Flowers  
Remarkable Raptors

## **Ranger Programs at Lewis Creek**

Slimy Critters  
Don't Bee Late to Pollinate  
Wild for Wildlife  
Reptile Time

## **Ranger Programs at Mercer Slough**

Perfect Pollinators  
Our Wild Neighbors  
Who Let the Bugs Out?  
Fabulous Frogs

## **North Bellevue Community Center**

Art for Older Adults  
Arts & Crafts

## **Bellevue Book Club**

Chorus  
CISC Chinese Musical  
Instrument Group  
Conversational English  
Drop-in SHIBA (health care  
coverage understanding)  
ESL (English as a second language)  
classes  
IACS (Indian American Community  
Services) Program  
Kids Sports Free Play  
Legal Assistance  
Monday Mixer  
Moving to a Simpler Life free seminar  
One-on-One Tech Help  
Parkinson's Disease Support Group  
Sea Mar Gema Chorus  
Sea Mar Community Program  
SilverSneakers  
Sounds of Swing Big Band Practice  
Storytime and Kids Play Space  
Thai Chi  
Transcend United  
Multicultural Activities  
Wednesday Movies  
Youth Eastside Services Counseling

## **South Bellevue Community Center**

Drop-in Sports  
Bridge Brunch  
Indoor Play  
Line Dancing  
Open Art Studio  
Board Game Bonanza

## **TRACKS Outdoor Program**

Cascade Hiking Club  
Park Walks  
Tuesday Trails 50+ Hiking  
Wednesday Walk and Roll

# Financial assistance available

Bellevue Parks & Community Services strives to make program opportunities available to all interested individuals who live in Bellevue, regardless of income. We provide financial assistance (scholarships) to those who might not otherwise be able to participate.

Learn more and apply: [BellevueWA.gov/scholarship](https://BellevueWA.gov/scholarship)  
Questions? Call 425-452-6885 or email [parksweb@bellevuewa.gov](mailto:parksweb@bellevuewa.gov)

## Two scholarship options:

### General Scholarship Award:

Includes the annual Play Pass. Award amount increased to \$700 per person, per year.

### Day Camp Scholarship Award:

A new \$1,200 scholarship for youth ages 18 and under to use toward day camps.



# BASICS OF SUCCESSFUL VEGETABLE GROWING

Learn the fundamentals of successful vegetable gardening with expert guidance.

**Saturday, May 23 | 10–11:30 a.m.**

**Lake Hills Greenbelt | Ages 18+ | Free event**

Learn the basic principles of vegetable growing with a focus on crops planted in late spring. This class covers how to grow vegetables from both seeds and starts, with practical tips participants can use at home.

## Topics include

- Soil preparation
- Planting basics
- Irrigation and fertilizing
- Pest and disease management

## Presenter

Presented by Jim Olson, WSU Extension Master Gardener Program. Jim is a longtime Bellevue Demonstration Garden volunteer, former melon bed manager and a frequent Master Gardener speaker.





## Volunteer with Parks & Community Services

Volunteers help make Bellevue's parks, programs and community spaces welcoming for everyone. Whether you enjoy working outdoors, supporting youth programs or helping at community events, there are many ways to get involved.

### Nature & Outdoors

#### Bellevue Botanical Garden

Help maintain gardens, assist with educational programs, support events and welcome visitors.

425-452-2750

[bbgvolunteers@bellevuewa.gov](mailto:bbgvolunteers@bellevuewa.gov)

#### Kelsey Creek Farm

Support animal care, programs and farm events.

Opportunities include:

- Adult Farm Volunteers
- After-school Teen Volunteers
- Saturday Morning Teen Volunteers

425-452-7688

[kelseycreekfarm@bellevuewa.gov](mailto:kelseycreekfarm@bellevuewa.gov)

### Performing Arts

#### Bellevue Youth Theatre

Assist with productions through stage crew, costuming and ushering.

425-452-7155

[bytvolunteers@bellevuewa.gov](mailto:bytvolunteers@bellevuewa.gov)



Learn more: [BellevueWA.gov/volunteer](http://BellevueWA.gov/volunteer)

## Youth & Family Programs

### Youth Sports Coach

Coach youth ages 5-12 in basketball, soccer, cross country and track and field programs at parks and gyms throughout Bellevue.

425-452-4627

youthsports@bellevuewa.gov

### Bellevue Youth Link

Leadership and community service opportunities for middle and high school students. Adults may serve as mentors or board members.

425-452-2846

youthlink@bellevuewa.gov

### Wraparound Services

Support family programs and community events in partnership with the Bellevue School District.

youthlink@bellevuewa.gov

## Community Centers & Events

### Crossroads Community Center

Assist with programs, Movies in the Park, teen activities and special events.

425-452-4874

ccc@bellevuewa.gov

### Highland Community Center

Support programs and events for adults with intellectual disabilities.

425-452-7686

hcc@bellevuewa.gov

### North Bellevue Community Center

Help with older adult programs, meals and community events.

425-452-7681

nbcc@bellevuewa.gov

### South Bellevue Community Center

Assist with events including Halloween on the Hill, Holidays on the Hill and Downtown Movies in the Park.

425-452-4240

sbcc@bellevuewa.gov

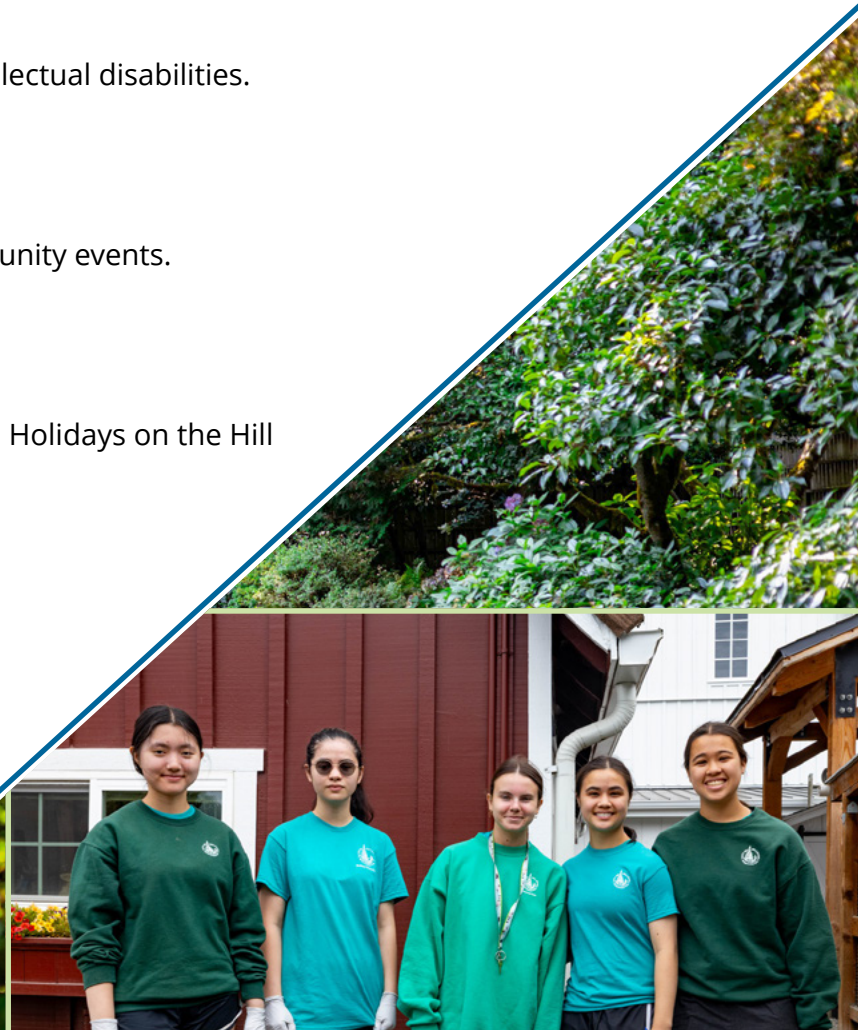
### Civic Service

Bellevue Probation Services

Mentor clients and support staff in the city's probation programs.

425-452-7193

probation@bellevuewa.gov



Learn more: [BellevueWA.gov/volunteer](https://BellevueWA.gov/volunteer)

# EARLY LEARNING

## Farm

### Little Farmers

Share hands-on barnyard fun with your little one while building comfort around animals and early social skills. Help with barn chores, feed and pet animals, create crafts, enjoy parallel play and take a pony ride. Expect a mix of indoor and outdoor play and plan to get a little messy along the way. Siblings under age 2 are welcome in front or back carriers.

#### Kelsey Creek Farm

**\$78(R) \$94(N) Ages 2-3**

11629 Tue 10-11:30 a.m. 5/5-5/19

11630 Tue 10-11:30 a.m. 5/26-6/9

### Farm Explorers

Discover farm life through hands-on animal care, barn chores, a pony ride and making snacks. This drop-off program builds confidence and curiosity through seasonal themes, crafts, stories and guided time with farm animals.

#### Kelsey Creek Farm

**\$96(R) \$115(N) Ages 4-6**

11702 Thu 10 a.m.-12:30 p.m. 5/7-5/21

11713 Thu 10 a.m.-12:30 p.m. 5/28-6/11

### Woolly Wonders

Get up close with sheep while learning how wool is made from fiber to finished product. Visit the sheep, watch simple fiber demonstrations and create your own woolly sheep craft to take home. This adult and child class encourages curiosity, creativity and shared discovery.

#### Kelsey Creek Farm

**\$25(R) \$30(N) Ages 4-8**

12244 Sat 1-2 p.m. 5/9



### Bees and Blooms

Meet Kelsey Creek Farm's honeybees and explore the important role pollinators play in our community. You and your child will visit the bees, discover which flowers pollinators prefer and create a bee-themed notebook to take home. Learn how honeybees support farms and how native bees help ecosystems across Bellevue.

#### Kelsey Creek Farm

**\$25(R) \$30(N) Ages 4-8**

12245 Sat 1-2 p.m. 6/6

## Fitness and movement

### Tennis

#### Little Lobbers

Designed for young players, Little Lobbers helps children build hand-eye coordination while learning the basics of tennis. Participants develop muscle memory for simple strokes and movement through age-appropriate activities that make learning fun and active.

#### Robinswood Tennis Center

**\$98(R) \$98(N) Ages 4-6**

11189 Sat 11-11:45 a.m. 5/2-6/13

#### Little Lobbers Instructional Clinics

Introduce young players to tennis through fun games and simple drills that build hand-eye coordination, balance and basic swing skills. This beginner program helps kids gain confidence on the court while developing a love for the game.

#### Robinswood Tennis Center

**\$56(R) \$56(NR) Ages 4-6**

12564 Mon-Thu 12:15-1 p.m. 6/29-7/2

12565 Mon-Thu 12:15-1 p.m. 7/6-7/9

12566 Mon-Thu 12:15-1 p.m. 7/13-7/16

12567 Mon-Thu 12:15-1 p.m. 7/20-7/23

12568 Mon-Thu 12:15-1 p.m. 7/27-7/30

12569 Mon-Thu 12:15-1 p.m. 8/3-8/6

12570 Mon-Thu 12:15-1 p.m. 8/10-8/13

## Kids Sports Free Play

Drop in for open play with basketball and indoor soccer. Kids build coordination, teamwork and confidence while staying active. All equipment is provided. Closed-toe shoes required. Parent or guardian supervision is required.

**North Bellevue Community Center**

**FREE** Ages 4-9

11536 Saturday mornings and afternoons  
*The schedule of this program is variable with other community center programming.*

## Indoor learning

### Saturday School

Give your child a fun and supportive introduction to preschool learning. Experienced teachers and an engaging curriculum create a safe, nurturing environment where children learn through play and exploration. Kids build social skills while making crafts, singing songs, playing in the gym or outdoors and learning alongside friends.

**Crossroads Community Center**

**\$15(R) \$18(N)** Ages 4-5

13839 Sat 9:30 a.m.-12:30 p.m. 5/2

13840 Sat 9:30 a.m.-12:30 p.m. 6/6

### Parkside Preschool Summer School

Prepare your child for kindergarten in this month-to-month readiness program! Led by experienced early childhood educators, the Parkside classroom offers engaging learning activities that support academic, social and emotional growth. Weekly themes create consistent structure while encouraging curiosity, confidence and classroom readiness.

Please note: Each child must be fully toilet trained and turn 4 by the first day of class to participate.

**Crossroads Community Center**

**\$75(R) \$95(N)** Ages 4-5

**Week 1:** 13841 Weekdays 9:30 a.m.-12:30 p.m.

7/6-7/10

**Week 2:** 13842 Weekdays 9:30 a.m.-12:30 p.m.

7/13-7/17



**Week 3:** 13843 Weekdays 9:30 a.m.-12:30 p.m.  
7/20-7/24

**Week 4:** 13844 Weekdays 9:30 a.m.-12:30 p.m.  
7/27-7/31

**Week 5:** 13845 Weekdays 9:30 a.m.-12:30 p.m.  
8/3-8/7

**Week 6:** 13846 Weekdays 9:30 a.m.-12:30 p.m.  
8/10-8/14

## Music

### Crossroads Music Together

Make music together through singing, movement and joyful play. This engaging class introduces original and traditional songs from around the world, exploring a variety of languages, tonalities and rhythms. Families receive an illustrated songbook along with print and online resources to continue music-making at home and support early musical development. This foundational Music Together class is designed for parent or caregiver participation, creating shared experiences that nurture confidence, connection and a lifelong love of music.

An additional \$50 Music Together program fee is paid directly to Music Together with Mrs. Christi on or before the first day of class.

**Crossroads Community Center**

**\$110(R) \$132(NR)** Ages 5/under

14016 Sat 9:30-10:15 a.m. 7/18-8/15

14020 Sat 10:30-11:15 a.m. 7/18-8/15

## Nature and wildlife

### Tiny Trailblazers

Children explore plants and wildlife along the trails while learning through stories, hands-on discovery and a creative craft. Each session features a new topic, helping build confidence and comfort in the outdoors. Programs take place rain or shine, so dress for the weather and wear sturdy shoes.

Pre-registration is required for all attendees, including accompanying adults.

### Lake Hills Greenbelt

**FREE** Ages 2-5

13751 10-11 a.m. 5/1  
13753 10-11 a.m. 6/5  
13754 10-11 a.m. 7/3  
13755 10-11 a.m. 8/7

### Story and Stroll at Mercer Slough

Spark curiosity and confidence on the trail through stories and gentle exploration. Children enjoy a nature-based story followed by a guided walk through the forested wetlands. This program helps young explorers become more comfortable navigating trails while connecting to the natural world.

Pre-registration is required for all participants.

### Mercer Slough Environmental Education Center

**FREE** Ages 2-5

13683 Fri 10:30-11:30 a.m. 5/8  
13685 Fri 10:30-11:30 a.m. 6/12  
13686 Fri 10:30-11:30 a.m. 7/10  
13687 Fri 10:30-11:30 a.m. 8/7

## Play

### Indoor Play

Give your child a safe, active space to move, explore and play indoors. This open gym time features toys, mats and simple activities that support gross motor skills and social interaction.

Parents and caregivers must supervise their own children and remain present at all times.

### South Bellevue Community Center

**\$4(R) \$5(N)** Ages 5/under

13600 Mon, Wed, Fri 10:30 a.m.-12 p.m. 5/1-6/17

### Crossroads Community Center

**\$4(R) \$5(N)** Ages 5/under

13826 Fri 8-11 a.m. 5/1-6/12

### Highland Community Center

**\$4(R) \$5(N)** Ages 8/under

13967 Wed, Fri 9 a.m.-12 p.m. 3/18-6/26

### North Bellevue Community Center

**FREE** Ages 5/under

12075 Thu 1:30-3:45 p.m. 5/7-8/27

## Sports

### PeeWee Ball Hockey

Introduce young athletes to the basics of hockey in a fun, supportive environment. Led by experienced McVander Hockey coaches, children explore ball hockey through mini games and playful challenges that build confidence, coordination and teamwork. Players learn fundamental skills such as stickhandling, passing, shooting and basic positioning while staying active and engaged. Ball hockey is similar to ice hockey but is played on a hard surface using a ball instead of a puck, making it a great first step into the sport.

### North Bellevue Community Center

**\$99(R) \$119(N)** Ages 3-5

12236 Sat 9:30-10:30 a.m. 5/2-5/30



## YOUTH AND TEEN

### After-school

#### Makerspace

Explore creativity, collaboration and hands-on learning in a welcoming makerspace designed for youth and teens. Participants are free to work on personal projects or experiment with new materials and art forms using shared tools and supplies. The makerspace encourages creativity, problem-solving and confidence in a supportive environment where making and learning go hand in hand.

Pre-registration is required and space may be limited.

**Crossroads Community Center**

#### Teen Makerspace

**FREE Ages 13-17**

12673 Sat 1-4 p.m. 5/2

10826 Thu 4-5:30 p.m. 5/7

10827 Thu 4-5:30 p.m. 5/14

12674 Sat 1-4 p.m. 5/16

10828 Thu 4-5:30 p.m. 5/21

10829 Thu 4-5:30 p.m. 5/28

10830 Thu 4-5:30 p.m. 6/4

12675 Sat 1-4 p.m. 6/6

10831 Thu 4-5:30 p.m. 6/11

10832 Thu 4-5:30 p.m. 6/18

#### Youth Makerspace

**FREE Ages 6-12**

10802 Wed 2:30-5 p.m. 5/6

10803 Wed 2:30-5 p.m. 5/13

10804 Wed 2:30-5 p.m. 5/20

10805 Wed 2:30-5 p.m. 5/27

10806 Wed 2:30-5 p.m. 6/3

10807 Wed 2:30-5 p.m. 6/10

10808 Wed 2:30-5 p.m. 6/17

#### Girls Who Write

Create, share and grow as a writer in this supportive after-school workshop. Participants explore storytelling and creative writing fundamentals through guided lessons, prompts and hands-on exercises. This welcoming group builds confidence, self-expression and connection as writers learn to develop their voices and support one another along the way.

**Crossroads Community Center**

**FREE Ages 8-12**

13838 Thu 4:30-5:30 p.m. 5/7-6/11

#### Domino Toppling

Design and build exciting chain reactions while learning the art of domino toppling. Participants start with simple lines and splits, then progress to more complex turns, towers and techniques as skills grow. This hands-on class builds problem-solving, patience and creativity in a fun, collaborative setting.

**Crossroads Community Center**

**FREE Ages 7-17**

11860 Wed 3-4 p.m. 5/13-6/3

### Farm

#### Junior Farmers

Step into the barnyard and discover what it takes to care for animals at a working farm. This hands-on after-school program features seasonal themes, crafts, stories and guided interaction with farm animals in a safe, supportive environment. Each session highlights a different group of animals, blending familiar favorites with new experiences that keep learning fresh and engaging.

**Kelsey Creek Farm**

**\$78(R) \$94(N) Ages 7-9**

11635 Wed 2-4 p.m. 5/6-5/20

11636 Wed 2-4 p.m. 5/27-6/10



### After-school Teen Farm Volunteers

Roll up your sleeves and experience farm life from the inside out. Participants work alongside Kelsey Creek Farm staff to support daily animal care by preparing meals, cleaning living spaces, assisting with farm chores and helping bring animals into the barn. This program builds responsibility, independence and job skills while earning service hours for school.

#### Kelsey Creek Farm

**\$15(R) \$18(N) Ages 12-18**

11641 Wed 2-4:15 p.m. 5/6-5/20

11643 Wed 2-4:15 p.m. 5/27-6/10

### Saturday Morning Teen Farm Volunteers

Start the weekend with meaningful work and hands-on time caring for farm animals. Participants assist staff with morning farm routines, including bringing animals to pasture, preparing meals, cleaning living spaces and completing farm chores. This volunteer experience builds confidence, teamwork and practical skills while earning service hours for school.

#### Kelsey Creek Farm

**\$15(R) \$18(N) Ages 15-18**

12020 Sat 8:30 a.m.-12 p.m. 5/9-5/23

12021 Sat 8:30 a.m.-12 p.m. 5/30-6/13

## Performing Arts

### The Jungle Book

Swing into a summer of adventure, imagination and movement as The Jungle Book comes to life on stage. Participants explore the world of Mowgli and his friends through storytelling, humor, and large group dances in this high-energy production. With roles for all experience levels, this program builds confidence, teamwork, and stage skills in a fun, supportive theatre environment. Based on the original novel by Rudyard Kipling.

Three casts are available to fit a variety of schedules. Please note that participation is required during tech week and performance dates.

Auditions: June 2 (teens only), Jun. 3 or Jun. 4.  
Drop-in anytime between 5-6:30 p.m.

#### Bellevue Youth Theatre

**Tiger Cast: FREE(R) \$150(N) Ages 5/up**

Daily 6-8 p.m. 6/22-8/2

- Tech Week: July 27-30
- Performs: July 31-Aug. 2

**Panther Cast: FREE(R) \$150(N) Ages 5/up**

Daily 5-7 p.m. 6/22-8/9

- Tech Week: Aug. 3-6
- Performs: Aug. 7-9

**Wolf Cast: FREE(R) \$150(N) Ages 5/up**

Daily 4-6 p.m. 6/22-8/16

- Tech Week: Aug. 10-13
- Performs: Aug. 14-16

### Amplify Program

Step into a bold, collaborative performance experience where creativity leads the way. Participants work with Beyond the Stage Youth to explore a shared theme through collaborative writing, improv games, movement and guided discussion. Scenes, monologues, and performance pieces are developed and woven together through hands-on activities that build confidence, creativity and connection. This program welcomes participants interested in acting, creative writing, scriptwriting, dance, or creative exploration in a supportive, inclusive environment.

Multilingual and multicultural backgrounds and LGBTQIA+ participants are encouraged. Auditions are required. Participants must attend auditions on June 4 or 5 between 5 and 6:30 p.m. or email [contact@beyondthestageyouth.org](mailto:contact@beyondthestageyouth.org). Performs on August 21 and 22.

#### Bellevue Youth Theatre

**FREE Ages 13-19**

13707 Tue-Thu 6-8 p.m. 6/30-8/20

## Sports

### Track & Field

Explore the basics of running, jumping and throwing in a fun, supportive environment. Participants will try a variety of Track & Field events to discover what they enjoy most while learning proper techniques and form. Events include sprints and distance running, relays, hurdles, shot put and turbo javelin.

#### Tillicum Middle School

**\$85(R) \$102(N) Ages 6-13**

14045 Thu 4:30-5:30 p.m. 4/16-5/28

14046 Thu 5:45-6:45 p.m. 4/16-5/28

### Flag Football

Get moving, make friends and learn the game in a fun, noncompetitive flag football environment. Players build skills through passing, catching, defense and agility drills paired with low-pressure scrimmages. This program focuses on confidence, coordination and teamwork while keeping the emphasis on fun and active play. No experience is needed.

#### Robinswood Community Park - Fields

**\$44(R) \$53(N) Ages 7-13**

11994 Wed. 1:45-3 p.m. 4/15-5/6

12014 Wed 1:45-3 p.m. 5/13-6/3

### Introduction to Ball Hockey

Jump into the fast-paced world of hockey with an exciting introduction to ball hockey. Players explore the fundamentals of the game in a supportive, encouraging environment. Through engaging drills and scrimmages, participants develop stickhandling, passing, shooting and positioning skills while building confidence, coordination and teamwork. Ball hockey is similar to ice hockey but is played on a hard surface using a ball instead of a puck.

#### North Bellevue Community Center

**\$99(R) \$119(N) Ages 6-11**

12237 Sat 10:45-11:45 a.m. 5/2-5/30

### UK International Soccer Spring Academy

Discover the best of UK-style soccer as coaches lead players through an engaging and developmental spring training program designed to strengthen fundamentals and deepen understanding of the game.

#### Robinswood Community Park - Fields

**\$135(R) \$162(N) Ages 7-10**

11996 Mon 4-5:15 p.m. 4/13-5/18

No class 5/25

### Biddy Boarder Skateboard

Introduce your young rider to skateboarding in a safe, supportive setting. Designed for beginners and early learners, this session builds confidence and coordination while teaching essential skills. Participants practice ramp riding, safe falling, proper use of safety gear, taking turns and skate park etiquette. Sessions are held on indoor ramps and an outdoor street park for a well-rounded experience. Skateboards and safety gear are provided.

#### Bellevue Indoor Skate Park

**\$100(R) \$120(NR) Ages 5-7**

13187 Mon-Fri 1-2:15 p.m. 6/29-7/3

13188 Mon-Fri 1-2:15 p.m. 7/13-7/17

13189 Mon-Fri 1-2:15 p.m. 7/20-7/24

13190 Mon-Fri 1-2:15 p.m. 7/27-7/31

13191 Mon-Fri 1-2:15 p.m. 8/10-8/14

13192 Mon-Fri 1-2:15 p.m. 8/17-8/21

13226 Mon-Fri 1-2:15 p.m. 8/24-8/28



## Martial Arts

### Hapkido

Build discipline through the Korean martial art of Hapkido. Students develop self-defense skills, coordination and mindfulness while improving strength and flexibility. Classes combine fitness, technique and meditation in a positive, family-friendly environment. Pre-registration is required. Drop-ins are not available.

**North Bellevue Community Center**

#### Conqueror Hapkido

**Ages 5-12**

**\$56(R) \$67(N)**

Mon, Wed 5:30-6:30 p.m. 5/4-5/27

**\$72(R) \$90(N)**

Mon, Wed 5:30-6:30 p.m. 6/1-6/29

**\$72(R) \$90(N)**

Mon, Wed 5:30-6:30 p.m. 7/1-7/29

**\$72(R) \$90(N)**

Mon, Wed 5:30-6:30 p.m. 8/3-8/26

#### Conqueror Hapkido & MMA

**Ages 12+**

**\$64(R) \$80(N)**

Mon, Wed 6:35-7:35 p.m. 5/4-5/27

**\$72(R) \$90(N)**

Mon, Wed 6:35-7:35 p.m. 6/1-6/29

**\$72(R) \$90(N)**

Mon, Wed 6:35-7:35 p.m. 7/1-7/29

**\$72(R) \$90(N)**

Mon, Wed 6:35-7:35 p.m. 8/3-8/26

### Shotokan Karate

Build confidence, focus and self-discipline through the practice of traditional Shotokan Karate. This program emphasizes a non-violent philosophy centered on respect, excellence, strength and character while keeping classes engaging and fun. Experienced Black Belt instructors guide participants through fundamental techniques and structured practice in a supportive learning environment.

**South Bellevue Community Center**

**\$63(R) \$77(N) Ages 6-12**

13425 Mon, Wed 6-6:50 p.m. 5/4-5/27

**\$81(R) \$99(N) Ages 6-12**

13427 Mon, Wed 6-6:50 p.m. 6/1-6/29

13429 Mon, Wed 6-6:50 p.m. 7/1-7/29

**\$63(R) \$77(N) Ages 9/up**

13426 Mon, Wed 7-7:50 p.m. 5/4-5/27

**\$81(R) \$99(N) Ages 9/up**

13428 Mon, Wed 7-7:50 p.m. 6/1-6/29

13430 Mon, Wed 7-7:50 p.m. 7/1-7/29

## Kendo

Train mind and body through the discipline of traditional Japanese swordsmanship. Kendo emphasizes focus, respect and self-control while building coordination, confidence and mental strength. Multiple class levels allow participants to progress skills safely and intentionally based on experience.

**Crossroads Community Center**

### Beginning

Start your Kendo journey by learning the foundations of movement, focus and control. Participants learn basic footwork and sword handling, beginning with a bokken and progressing to a shinai.

An equipment package including a bokken, shinai and carry bag is required for \$90, payable at the first class.

**\$99(R) \$119(N) Ages 10/up**

13355 Fri 6:30-8 p.m. 6/5-8/14

### Intermediate

Take the next step by sharpening technique and building confidence through structured practice. Classes focus on drills, advanced techniques and striking live targets. As skills progress, participants begin wearing armor and participating in supervised bouts. Part of each class includes drills alongside the advanced class.

*Please note: Participants must have completed Beginning Kendo.*

**\$99(R) \$119(N) Ages 10/up**

13356 Fri 6:30-8 p.m. 6/5-8/14

## Advanced

Refine technique, strategy and sparring skills at an advanced level of practice. Participants wear armor and focus on precision, control and high-level sparring. Individuals with prior experience must contact the instructor for approval before enrolling.

*Please note: Participants must have completed Intermediate Kendo.*

**\$99(R) \$119(N) Ages 10/up**

13357 Fri 7:30-9:30 p.m. 6/5-8/14

## Women's Advanced

Train in a supportive, women-focused environment while continuing advanced Kendo practice. This monthly class builds on skills learned in Advanced Kendo and requires armor. Participants are welcome to attend the class that aligns with their gender identity or expression.

**\$33(R) \$40(N) Ages 10/up**

13384 Fri 8-9:30 p.m. 6/12-8/7



## Kendo Junior Summer Camp

This advanced camp teaches traditional Japanese swordsmanship while building focus, discipline and coordination. Designed for experienced Kendo students only. Required armor and equipment are mandatory, and instructor approval is needed for students trained outside Bellevue programs.

**Crossroads Community Center**

**\$110(R) \$132(N) Ages 8-15**

12441 Mon-Fri 9 a.m.-12 p.m. 8/10-8/14



## Taekwondo

Build strength, focus and self-confidence through the dynamic practice of Taekwondo. Classes emphasize discipline, respect and controlled movement while developing balance, coordination and flexibility in a supportive setting.

An additional \$50 fee is due to the instructor for the uniform upon purchase. Additional fees apply for belt testing.

**South Bellevue Community Center**

### Taekwondo 4 p.m.

Ages 7/up

13440 Tue, Thu 4-4:50 p.m. 6/2-6/30

13441 Tue, Thu 4-4:50 p.m. 7/2-7/30

13445 Tue, Thu 5-5:50 p.m. 7/2-7/30

13442 Tue, Thu 4-4:50 p.m. 8/4-8/13

### Taekwondo 5 p.m.

Ages 7/up

13443 Tue, Thu 5-5:50 p.m. 5/5-5/28

13444 Tue, Thu 5-5:50 p.m. 6/2-6/30

13446 Tue, Thu 5-5:50 p.m. 8/4-8/13

### Taekwondo 6 p.m.

Ages 9/up

13562 Tue, Thu 6-6:50 p.m. 5/5-5/28

13564 Tue, Thu 6-6:50 p.m. 6/2-6/30

13565 Tue, Thu 6-6:50 p.m. 7/2-7/30

13566 Tue, Thu 6-6:50 p.m. 8/4-8/13

## Tennis

### Junior Tennis Teams

Take your game to the next level with competitive, skill-based junior tennis teams. Players progress through team levels focused on rally consistency, match play, strategy and performance in a structured, supportive environment. Placement is based on skill level and advancement through team ladders. Entry to all teams is through tryouts.

Register online for tryouts and view current process information at [bellevuewa.gov/tennis](http://bellevuewa.gov/tennis). Participants registered for Saturday youth classes may not try out for Junior Teams during the same session.

#### Robinswood Tennis Center

### Team 1 Tryout

Move into competitive match play with increased expectations for skill and consistency. Players focus on scoring, match strategy, volleys, overheads and reliable serves while competing against peers. Entry is through tryout.

#### \$26(R) \$26(N) Ages 7-18

12595 Tue, Thu 4-5:15 p.m. 4/28-4/30

#### \$30(R) \$30(N) Ages 7-18

12799 Tue, Thu 2-3:30 p.m. 6/30-7/2

12807 Tue, Thu 2-3:30 p.m. 7/28-7/30

### Team 2 Tryout

Advance your competitive game through higher-level match play and tactical development. Players refine foundational skills and apply them consistently during matches while progressing through the team ladder. Entry is through tryout.

#### \$26(R) \$26(N) Ages 7-18

12596 Tue, Thu 5:15-6:30 p.m. 4/28-4/30

#### \$30(R) \$30(N) Ages 7-18

12801 Tue, Thu 3:30-5 p.m. 6/30-7/2

12809 Tue, Thu 3:30-5 p.m. 7/28-7/30



### Tournament Team Tryout

Train for tournament competition with focused drills, strategy and performance-based play. Participants develop offensive shots and competitive tactics while actively participating in tournaments. Entry is through tryout.

#### \$39(R) \$39(N) Ages 7-18

12597 Mon, Wed, Fri 5:15-6:30 p.m. 4/27-5/1

#### \$45(R) \$45(N) Ages 7-18

12803 Mon, Wed, Fri 10:30 a.m.-12 p.m. 6/29-7/3

12811 Mon, Wed, Fri 10:30 a.m.-12 p.m. 7/27-7/31

### Elite Team Tryout

Compete at the highest level of junior tennis at Robinswood. This advanced team emphasizes match-play intensity, precision and high-level strategy in a competitive training environment. Designed for experienced players ready for elite competition. Entry is through tryout.

#### \$39(R) \$39(N) Ages 7-18

12598 Mon, Wed, Fri 4-5:15 p.m. 4/27-5/1

#### \$45(R) \$45(N) Ages 7-18

12805 Mon, Wed, Fri 3:30-5 p.m. 6/29-7/3

12813 Mon, Wed, Fri 9-10:30 a.m. 7/27-7/31

### Teen Instructional Clinic

Build and refine your tennis fundamentals in a fun, social environment. This clinic focuses on rallying, serving and basic match play to help teens improve skills and gain confidence on the court.

#### \$56(R) \$56(NR) Ages 14-17

12571 Mon-Thu 12-1 p.m. 8/17-8/20

## Saturday Youth Tennis Lessons

### Beginning

Get started with the fundamentals of tennis in a welcoming instructional setting. Players learn basic strokes, movement and rules while building confidence and coordination.

**Robinswood Tennis Center**

**\$98(R) \$98(N) Ages 7-10**

11191 Sat 1:30-2:30 p.m. 5/2-6/13

**\$98(R) \$98(N) Ages 11-14**

11192 Sa 2:30-3:30 p.m. 5/2-6/13

### Advanced Beginning

Build on foundational skills while improving consistency and court awareness. Designed for players ready to progress beyond beginner instruction.

**Robinswood Tennis Center**

**\$98(R) \$98(N) Ages 7-10**

11193 Sat 3:30-4:30 p.m. 5/2-6/13

**\$98(R) \$98(N) Ages 11-14**

11195 Sat 4:30-5:30 p.m. 5/2-6/13

### Intermediate

Strengthen rally skills and match readiness in the highest level of Saturday youth instruction. Players refine technique and consistency while preparing for advanced play.

**Robinswood Tennis Center**

**\$98(R) \$98(N) Ages 7-14**

11188 Sat 10-11 a.m. 5/2-6/13

### Teen Tennis

Develop fundamental tennis skills in a class designed specifically for teens. Instruction focuses on technique, consistency and confidence in a supportive group setting.

**Robinswood Tennis Center**

**\$98(R) \$98(N) Ages 15-18**

11190 Sat 12-1 p.m. 5/2-6/13

## STEM and creative games

### Robotics: Intro to Coding

Bring technology to life by programming a real robot to move, sense and solve challenges. Participants learn introductory coding concepts through a block-based visual platform while exploring how software and hardware work together. Problem-solving and creative thinking are applied to mission challenges such as obstacle avoidance, light sensing and path following.

**Crossroads Community Center**

**\$60(R) \$72(N) Ages 8-12**

13053 Sat 10 a.m.-12 p.m. 5/9

### Minecraft Modding

Turn Minecraft play into a creative coding experience. Participants learn programming fundamentals using a drag-and-drop coding environment while building custom mods. Coders personalize their game with new items, custom maps, chat commands and mini-games while strengthening logic, creativity and problem-solving skills.

**Crossroads Community Center**

**\$120(R) \$144(N) Ages 8-12**

13048 Th 5-6 p.m. 5/14-6/4

### Dungeons and Dragons

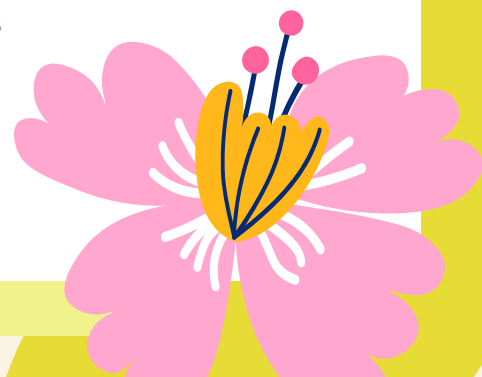
Step into a fast-paced fantasy adventure guided by imagination and teamwork. Players explore a complete one-session story led by a Dungeon Master, facing puzzles, magical encounters and heroic choices. These stand-alone adventures are welcoming for both new and experienced players who want an engaging tabletop experience.

**Crossroads Community Center**

**\$5(R) \$5(N) Ages 14/up**

12662 1-4 p.m. 5/9

12663 1-4 p.m. 5/23



## Dungeons and Dragons Summer 3-Shot

Embark on an epic storytelling journey that unfolds across the entire summer. Participants create heroes, solve puzzles and face magical challenges in a connected three-session adventure guided by a Dungeon Master. This extended experience builds imagination, teamwork and problem-solving while leading to a memorable finale.

Crossroads Community Center

\$15(R) \$15(N) Ages 14/up

12664 Sat 1-4 p.m. 6/13-8/15

## Nature, trails and wildlife

### Rascally Rabbits

Hop into the world of rabbits and discover how these lively creatures share our parks and trails. Participants explore rabbit habitats along the trail and learn how rabbits fit into local ecosystems. The program wraps up with a playful bunny-themed craft.

Pre-registration required for all attendees, including accompanying adults.

Lake Hills Greenbelt

FREE Ages 4-13

13735 10-11 a.m. 5/16

13738 10-11 a.m. 5/23

### Wild Predators in the Park

Bobcats, cougars and bears are part of Bellevue's wild landscape. Learn how these predators live, why they matter and how people can safely coexist with wildlife. This program encourages understanding, respect and responsible park use.

Pre-registration required for all attendees, including accompanying adults.

Lake Hills Greenbelt

FREE Ages 4-13

13739 10-11 a.m. 6/6

13740 10-11 a.m. 6/20



### Sensational Summer Flowers

Celebrate summer by exploring the colorful flowers that bring the Greenbelt to life. Participants walk the gardens and trails to learn how flowers adapt to attract pollinators. The experience concludes with a hands-on flower-inspired craft.

Pre-registration required for all attendees, including accompanying adults.

Lake Hills Greenbelt

FREE Ages 4-13

13742 10-11 a.m. 7/11

13743 10-11 a.m. 7/18

### Remarkable Raptors

Soar into the world of birds of prey that rule the skies above the Greenbelt. Participants learn about eagles, hawks, falcons and osprey while exploring their habitats. The program includes a creative raptor-themed craft.

Pre-registration required for all attendees, including accompanying adults.

Lake Hills Greenbelt

FREE Ages 4-13

13745 10-11 a.m. 8/8

13747 10-11 a.m. 8/22

### Slimy Critters

Discover the wiggly, crawly creatures that thrive beneath logs, leaves and soil. Participants explore outdoor habitats before heading indoors to create a craft inspired by their favorite slimy critter.

Lewis Creek Park

FREE Ages 5-10

13741 2:30-3:30 p.m. 5/16

13744 2:30-3:30 p.m. 5/30



### Don't Bee Late to Pollinate

Buzz into the fascinating world of pollinators and why they matter. Participants learn how bees, birds and other pollinators support plants and everyday life while exploring Lewis Creek Park.

#### Lewis Creek Park

**FREE Ages 5-10**

13746 2:30-3:30 p.m. 6/20

13749 2:30-3:30 p.m. 6/27

### Wild for Wildlife

Celebrate National Wild About Wildlife Month by meeting your wild neighbors. Participants take a short walk through Lewis Creek Park while learning about animals such as bears and bobcats and how they live alongside us.

#### Lewis Creek Park

**FREE Ages 5-10**

13752 2:30-3:30 p.m. 7/19

13757 2:30-3:30 p.m. 7/25

### Reptile Time

Slither into the world of reptiles and uncover the secrets of local snakes. Participants take a short half-mile walk to learn about reptiles found in the park and across Washington. The program ends with a reptile-themed craft to take home. This program does not include live animal demonstrations.

#### Lewis Creek Park

**FREE Ages 5-10**

13761 2:30-3:30 p.m. 8/9

13768 2:30-3:30 p.m. 8/22

### Sensory Stroll

Slow down and explore the natural world through sight, sound and touch during this guided sensory walk. Participants take a short one-mile stroll designed to awaken the senses and encourage mindful observation of seasonal changes. This experience supports curiosity, focus and connection to nature in a relaxed setting.

Children must attend with an accompanying adult.

#### Lewis Creek Park

**FREE Ages 5-10**

13775 2:30-3:30 p.m. 5/3

13779 2:30-3:30 p.m. 6/14

13783 2:30-3:30 p.m. 7/12

13784 2:30-3:30 p.m. 8/30

### Evening Wildlife Walk

Experience the park during twilight hours when nocturnal wildlife begins to stir. Participants learn about bats, their role in the ecosystem and how people can help protect them. Wildlife sightings are not guaranteed, as animals may still be resting before nighttime activity.

#### Lewis Creek Park

**FREE Ages 5-10**

13737 7:30-8:30 p.m. 8/29

### Perfect Pollinators

Pollinators may be small, but their impact is huge. Participants learn why pollination is essential while enjoying games and a guided walk through the wetland. This interactive program highlights the role pollinators play in healthy ecosystems.

#### Mercer Slough Environmental Education Center

**FREE Ages 5-10**

13730 Sat 2-3 p.m. 5/16





### **Our Wild Neighbors**

Coyotes, deer and other wildlife share our neighborhoods and parks. Take a guided walk to learn how these animals live and how people can coexist thoughtfully in urban and natural spaces. This program builds awareness, respect and appreciation for local wildlife.

**Mercer Slough Environmental Education Center**

**FREE Ages 5-10**

13733 Sat 2-3 p.m. 6/20

### **Who Let the Bugs Out?**

Look closer and uncover the hidden world of insects all around us. Participants learn how insects support ecosystems by breaking down waste and supporting food webs. Hands-on activities invite participants to become bug detectives for the day.

**Mercer Slough Environmental Education Center**

**FREE Ages 5-10**

13732 Sat 2-3 p.m. 7/18



### **Fabulous Frogs**

Hop into the wetland to discover the frogs that call Mercer Slough home. Participants learn how these amphibians support healthy ecosystems through activities, crafts and a short nature walk. This lively program blends learning with playful exploration.

**Mercer Slough Environmental Education Center**

**FREE Ages 5-10**

13734 Sat 2-3 p.m. 8/15



Presented by Bellevue Parks & Community Services Bellevue Youth Theatre



# ROMEO & Juliet

Friday, May 1.....7 p.m.  
 Saturday, May 2.....2 p.m.\*  
 Saturday, May 2.....7 p.m.  
 Sunday, May 3 .....2 p.m.  
 Friday, May 8.....7 p.m.  
 Saturday, May 9 .....2 p.m.  
 Saturday, May 9.....7 p.m.




RODGER AND HAMMERSTEIN'S  
**CINDERELLA**  
 ENCHANTED EDITION



Friday, May 15.....7 p.m.  
 Saturday, May 16.....5 p.m.\*  
 Sunday, May 17.....2 p.m.  
 Friday, May 22 .....7 p.m.  
 Saturday, May 23.....2 p.m.  
 Saturday, May 23.....7 p.m.  
 Sunday, May 24 .....2 p.m.



Performances at Bellevue Youth Theatre, 16051 NE 10th Street, Bellevue  
**Tickets \$13 | Live stream \$8 | \*Sensory Friendly Saturday Show**  
 For ticket information, contact BYT at 425-452-7155 or byt@bellevuewa.gov  
 For details visit [BellevueWA.gov/BYT](http://BellevueWA.gov/BYT)



## FAMILY ACTIVITIES

### Community gathering and enrichment

#### Community Nights at Crossroads

Connect with neighbors and enjoy a welcoming night out. These monthly community gatherings are designed to bring people together, build relationships and strengthen connections through shared experiences. Each month features a unique theme, with May celebrating a Community Picnic in the Park.

#### Crossroads Community Center

**FREE All Ages**

The theme for May is **Community Picnic in the Park.**

12212 6-8 p.m. 5/8

#### Family Sports and Games Tournament Night

Team up with the choice of 3-on-3 basketball, pickleball and ping pong tournaments, as well as a youth Mario Kart challenge. Connect with classic table games and cheer each other on in a welcoming setting. Registration is required for tournament play.

#### Crossroads Community Center

**FREE All Ages**

13998 4-8 p.m. 5/15



#### Games Room

Play, connect and unwind in the Crossroads Community Center Games Room. Drop in to enjoy table tennis, pool, air hockey and a wide selection of tabletop games that encourage friendly competition and social connection. Participants are welcome to use the games room during business hours to spend time with friends, meet new people and keep minds active.

#### Crossroads Community Center

**Free All Ages**

13829 Sat 8 a.m.-4 p.m. 5/2-8/29

13831 Weekdays 5:30 p.m.-8 p.m. 5/1-6/18

**FREE Ages 18/under**

13832 Mon, Tue, Thu, Fri 2:30-5:45 p.m. 5/1-6/18

13833 Wed 12:30-5:45 p.m. 5/6-6/17

#### Wednesday Movies

Enjoy a free movie and popcorn in a relaxed, family-friendly setting. Gather with friends, meet neighbors and share a fun evening at the community center. The full movie schedule is available at North Bellevue Community Center or by calling 425-452-7681.

#### North Bellevue Community Center

**FREE All Ages**

Wed 5:30-6:30 p.m. 5/6-8/28

#### Family Movie Time

##### Trolls

Join a lively sing-along movie night featuring *Trolls*, where kids can dance, sing and get their wiggles out. Popcorn will be served. This is a fun way to meet neighbors and build community. Doors open 30 minutes before start time.

#### Highland Community Center

**FREE All Ages**

14100 Sat 1 p.m.-3 p.m. 5/30





### **Paddington 2**

Settle in for a cozy community movie night featuring *Paddington 2*. Families can enjoy a warm, feel-good story, share laughs and relax together. Popcorn will be served. This event is a simple way to connect with neighbors and spend quality time together. Doors open 30 minutes before start time.

#### **Highland Community Center**

**FREE All Ages**

14101 Sat 6:30 p.m.-8:30 p.m. 5/30

### **Indoor Kite Flying**

Let your imagination take flight during this playful indoor kite-flying experience. This free drop-in program offers a unique way to enjoy movement and creativity indoors, with all equipment provided by a community partner.

#### **Crossroads Community Center**

**FREE Ages 18/up**

13827 Thu 12-2 p.m. 5/7-6/18

### **Pride Night at Crossroads**

Celebrate community and self-expression with crafts, welcoming games and upbeat music in a fun and inclusive space. Connect friends and neighbors while celebrating diversity and belonging at Pride Night.

#### **Crossroads Community Center**

**FREE All ages**

13999 Fri 6-8 p.m. 6/5

## **Drop-in family sports**

### **Badminton**

Grab a racket and enjoy active family time on the court. This drop-in badminton session offers a fun, low-pressure way for families to play together. This program encourages movement, friendly play and shared recreation.

#### **Crossroads Community Center**

**Ages 7/up, Free for participants under 18**

**\$4(R) \$5(N)**

13821 Fri 6-8 p.m. 5/1-8/28

13821 Sat 8-10 a.m. 5/2-8/29

### **Drop-in Family Badminton**

Share a relaxed morning of badminton with your family in a welcoming gym setting. This drop-in program gives families the chance to play together while staying active and connected. At least one parent, guardian or caregiver from the same household must participate on the court at all times. No drop-offs, lessons or organized team activities are permitted.

#### **South Bellevue Community Center**

**FREE Ages 5/up**

11661 Sun 8-10 a.m. 5/3-8/16

## **Basketball**

### **Family Basketball**

Shoot hoops together during a fun, family-focused open gym night. This free drop-in program creates space for families to play side by side in a casual, supportive environment. A parent, guardian or caregiver from the same household must participate on the court at all times. No drop-offs or organized team activities are allowed.

#### **Crossroads Community Center**

**FREE Ages 5/up**

14385 Sat 8-10 a.m. 5/2-8/29

## After-school Youth

Unwind, play and connect after school in a safe, welcoming space. This free drop-in program gives students and families a place to relax, socialize and enjoy informal recreation during afternoon hours.

### Crossroads Community Center

**FREE Ages 18 and under**

13814 Mon, Tue 2:30-3:45 p.m. 5/1-6/12

13815 Wed 12:30-5:45 p.m. 5/2-8/29

13816 Thu, Fri 2:30-5:45 p.m. 5/2-8/29

## Drop-in Family Basketball

Start your weekend with an energetic game of basketball the whole family can enjoy. This drop-in session invites families to play together while building skills, confidence and connection through active fun. A parent, guardian or caregiver from the same household must be on the court at all times. No drop-offs or organized team activities are permitted.

### South Bellevue Community Center

**FREE Ages 5/up**

11658 Sat 10 a.m.-12 p.m. 5/2-8/15

## Pickleball

### Drop-in Family Pickleball

Discover why pickleball is one of the fastest-growing family sports around. This drop-in program offers a fun, approachable way for families to learn and play together on the court. A parent, guardian or caregiver from the same household must participate at all times. No drop-offs, lessons or organized team activities are allowed.

### South Bellevue Community Center

**FREE Ages 5/up**

11663 Sun 10 a.m.-12 p.m. 5/3-8/16

## Nature, trails and wildlife

### Wednesday Walk and Roll

Get outside with TRACKS and enjoy the park with your toddler or preschooler. Kids can bike, scooter and roll around the park on a short wheel course or walk a separate route and enjoy a scavenger hunt through the park. There will be a short craft before heading out to explore the park. Activity books and craft supplies included. Registration is required each child and adult attending.

### Surrey Downs Park

**FREE All Ages**

12829 Wed 10:30 a.m.-noon 4/15

12830 Wed 10:30a.m.-noon 4/22

12831 Wed 10:30 a.m.-noon 4/29

12832 Wed 10:30 a.m.-noon 5/6

12833 Wed 10:30 a.m.-noon 5/13

13955 Wed 10:30 a.m.-noon 5/20

12834 Wed 10:30 a.m.-noon 5/27

### Canoe Mercer Slough

Paddle into the heart of Mercer Slough and experience this remarkable wetland from the water. Bellevue park rangers lead a three-hour, four-mile canoe trip offering a close look at how this ecosystem functions. With a bit of luck, participants may spot otters, herons, turtles and other wildlife along the way.

This program is designed for participants with prior canoe experience and is not instructional. Participants paddle their own canoe, must keep pace with the group and arrive by 8:45 a.m. for the safety briefing. All paddling equipment is provided. Programs run rain or shine and may be canceled for safety due to weather conditions. Registration opens two weeks prior to each session.

### Enatai Beach Park

**\$20(R) \$20(N) Ages 5/up**

13391 Daily 8:45 a.m.-12 p.m. 5/31

13392 Daily 8:45 a.m.-12 p.m. 6/7

13393 Daily 8:45 a.m.-12 p.m. 6/14

13394 Daily 8:45 a.m.-12 p.m. 6/21



13395 Daily 8:45 a.m.-12 p.m. 6/28  
 13396 Daily 8:45 a.m.-12 p.m. 7/12  
 13397 Daily 8:45 a.m.-12 p.m. 7/19  
 13398 Daily 8:45 a.m.-12 p.m. 7/26  
 13399 Daily 8:45 a.m.-12 p.m. 8/9  
 13400 Daily 8:45 a.m.-12 p.m. 8/16  
 13401 Daily 8:45 a.m.-12 p.m. 8/23  
 13402 Daily 8:45 a.m.-12 p.m. 8/30

### **Ranger-Led Hike at Mercer Slough Nature Park**

Explore shaded trails and boardwalks while discovering the plants and animals of a forested wetland. A park ranger leads this family-friendly hike, sharing fun facts and guiding hands-on exploration along the way. The guided portion ends at the channel bridge, allowing families to continue exploring on their own. This easy hike is under 1.5 miles.

#### **Mercer Slough Environmental Education Center**

##### **FREE All Ages**

13670 Sat 2-3:30 p.m. 5/30  
 13672 Sat 2-3:30 p.m. 6/27  
 13674 Sat 2-3:30 p.m. 7/25  
 13675 Daily 2-3:30 p.m. 8/29

### **Ranger-led Hike at Lewis Creek Park**

Come explore the natural and cultural history of Lewis Creek Park on a ranger-led walk. This easy hike is under 1.5 miles. We will look for wildlife signs and explore three different types of habitats. Come prepared for the weather and wear sturdy shoes.

#### **Lewis Creek Park**

##### **FREE All Ages**

13785 Daily 10:30-11:30 a.m. 5/2  
 13786 Daily 10:30-11:30 a.m. 6/6  
 13787 Daily 10:30-11:30 a.m. 7/11  
 13788 Daily 10:30-11:30 a.m. 8/15



### **Ranger Walk at the Lake Hills Greenbelt**

Discover the seasonal plants and animals of the Lake Hills Greenbelt on an easy ranger-led walk. This one-mile hike follows mostly level gravel trails and offers a relaxed way to explore nature and history together. Programs take place rain or shine, so dress for the weather. Pre-registration is required.

#### **Lake Hills Greenbelt**

##### **FREE All Ages**

13756 Sat 2-3 p.m. 5/2  
 13758 Sat 2-3 p.m. 5/16  
 13759 Sat 2-3 p.m. 5/23  
 13760 Sat 2-3 p.m. 5/30  
 13762 Sat 2-3 p.m. 6/6  
 13763 Sat 2-3 p.m. 6/13  
 13764 Sat 2-3 p.m. 6/20  
 13765 Sat 2-3 p.m. 6/27  
 13766 Sat 2-3 p.m. 7/4  
 13767 Sat 2-3 p.m. 7/11  
 13769 Sat 2-3 p.m. 7/18  
 13770 Sat 2-3 p.m. 7/25  
 13771 Sat 2-3 p.m. 8/1  
 13772 Sat 2-3 p.m. 8/8  
 13773 Sat 2-3 p.m. 8/15  
 13774 Sat 2-3 p.m. 8/22  
 13776 Sat 2-3 p.m. 8/29

### **Late Lake Loop**

Experience the park in a whole new way during an evening walk around Larsen Lake as we explore wildlife activity after sunset. Learn about bats, owls, raccoons and coyotes while discovering the habitats nocturnal animals call home. This guided walk encourages curiosity and connection to nature through observation and discussion. Bring a flashlight and dress for the weather.

Pre-registration is required for all attendees. Children must be accompanied by an adult.

#### **Larsen Lake Blueberry Farm**

##### **FREE All Ages**

13748 8-9 p.m. 5/1  
 13750 8-9 p.m. 8/28

## Twilight in the Wetland

As daylight fades, the wetland comes alive in quieter and more mysterious ways. Join a park ranger for a peaceful evening walk that highlights subtle wildlife activity and changing light. This guided experience encourages observation, curiosity and connection to nature.

### Mercer Slough Environmental Education Center

FREE All Ages

13725 Fri 7-8:30 p.m. 5/22

13729 Fri 7-8:30 p.m. 6/19

## Lakeside Bat Night

Watch bats take flight as the sun sets over the lake. Participants visit bat boxes, observe bat activity and listen to echolocation calls. Bring a flashlight or headlamp.

Pre-registration is required and children must attend with an adult.

### Larsen Lake Blueberry Farm

FREE All Ages

13778 Fri 8:30-10 p.m. 6/12

## World Migratory Bird Day

Celebrate migratory birds and their incredible journeys around the world. Drop in for ranger-led activities, a guided hike and hands-on crafts that support bird-friendly communities. Optional pre-registration is available for the ranger-led walk at 10 a.m. This is an outdoor event.

### Larsen Lake Blueberry Farm

FREE All Ages

13782 9 a.m.-12 p.m. 5/9

## Cascade Hiking Club

This hiking series is meant for hikers ready to level up and move from beginner to intermediate. Trails will have moderate degree of difficulty perfect for those looking for a challenge. Hikes range from 3.5-6 miles with up to 2,000 ft of elevation gain.

### Lewis Creek Visitor Center Parking Lot

\$12(R) \$15(NR)

12835 Garfield Ledges 9:30 a.m.-3:30 p.m. 5/1

12836 Little Si 9:30 a.m.-3:30 p.m. 5/8

12838 Denny Creek 9:30 a.m.-3:30 p.m. 5/15

12838 Ollalie State Park 9:30 a.m.-3:30 p.m. 5/29

## Skateboarding

### Skate Clinics

Build confidence on your board while learning skills that make skating safer and more fun. This clinic supports first-time skaters, beginners and those looking to sharpen their technique in a supportive skate park setting. Participants practice correct pushing, rolling, ollies, ramp skills, park etiquette and how to fall safely. Returning skaters continue progressing from where they left off. Skateboards and safety gear are available on-site for those without their own equipment. Classes maintain a one-to-three instructor ratio for focused guidance.

### Bellevue Skate Park

\$20(R) \$24(N) Ages 5/up

13796 Mon 4-4:55 p.m. 5/4

13797 Mon 4-4:55 p.m. 5/11

13798 Mon 4-4:55 p.m. 5/18

13799 Mon 4-4:55 p.m. 6/1

13800 Mon 4-4:55 p.m. 6/8

13801 Wed 2-3 p.m. 5/6

13802 Wed 2-3 p.m. 5/13

13803 Wed 2-3 p.m. 5/20

13804 Wed 2-3 p.m. 5/27

13805 Wed 2-3 p.m. 6/3

13806 Wed 2-3 p.m. 6/10

13807 Sat 10:45-11:45 a.m. 5/2

13808 Sat 10:45-11:45 a.m. 5/9

13809 Sat 10:45-11:45 a.m. 5/16

13810 Sat 10:45-11:45 a.m. 5/23

13811 Sat 10:45-11:45 a.m. 5/30

13812 Sat 10:45-11:45 a.m. 6/6

13813 Sat 10:45-11:45 a.m. 6/13



View the current pool schedule and sign up for alerts at

[BellevueWA.gov/aquatics](https://BellevueWA.gov/aquatics)

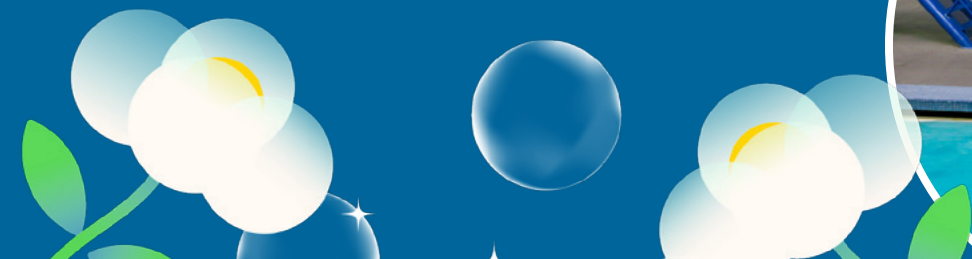
# Bellevue Aquatic Center

Dive into fun at the Bellevue Aquatic Center! This year-round facility features two indoor pools. The Warm Springs Pool is maintained at 92° F for water therapy and rehabilitation, swim lessons and open swim. The Blue Lagoon Lap Pool is used for fitness and training. With accessible features like a wheelchair ramp, gradual entry and lifts, everyone can enjoy swimming, exercising and relaxing at their own pace.

- **Preschool lessons (ages 3–5):** Teach floating, kicking and basic strokes through playful, confidence-building activities.
- **Youth lessons (ages 6–15):** Focus on endurance, coordination and technique as swimmers progress from simple floats to all four competitive strokes.
- **Adult lessons (ages 16+):** Build confidence, improve fitness and refine technique with guidance from experienced instructors.

Upcoming sessions:

- **May 4-28** (Registration opens April 25 at 3 p.m.)
- **June 1-18** (Registration opens May 23 at 3 p.m.)
- **July 6-31** (Registration opens June 27 at 3 p.m.)



## ADULT ACTIVITIES

### Books and reading

#### Adult Book Group

Connect through conversation, curiosity and a shared love of reading. This volunteer-led book group meets monthly for relaxed, thoughtful discussion in a welcoming community setting. Each session focuses on a selected book of the month, offering space to share perspectives, ask questions and enjoy meaningful dialogue with fellow readers. New participants are always welcome, whether you are a regular reader or joining for a single discussion.

Crossroads Community Center

FREE Ages 18/up

**Book of the month: Gathering Moss**  
by Robin Wall Kemmerer

10729 Fri 11 a.m.-1 p.m. 5/29

**Book of the month: Memorial Days**  
by Geraldine Brooks

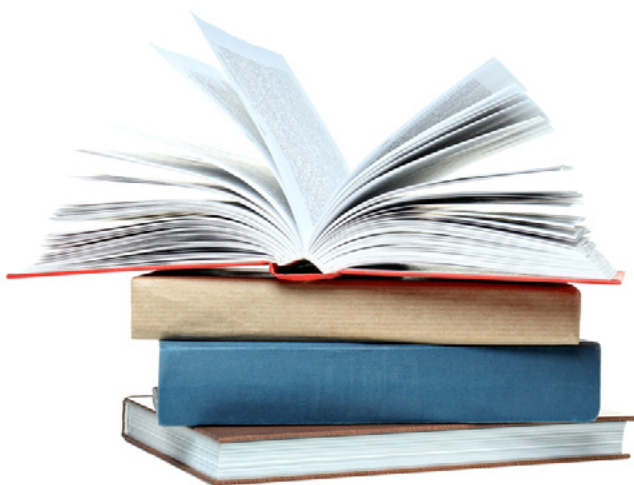
12779 Fri 11 a.m.-1 p.m. 6/12

**Book of the month: Everything is**  
**Tuberculosis** by John Green

12780 Fri 11 a.m.-1 p.m. 7/31

**Book of the month: North Woods**  
by Daniel Mason

12781 Fri 11 a.m.-1 p.m. 8/28



### Creative Arts

#### Introduction to Drawing: Figure & Gesture

Loosen your lines and learn to capture the movement of the human form. This beginner-friendly class introduces figure and gesture drawing through guided exercises led by local multidisciplinary artists. Participants practice the line of action by sketching timed poses using a web-based assistive learning tool featuring adult nude models. Techniques learned can be applied across two- and three-dimensional art forms. No drawing experience is required. Water and a snack are provided.

North Bellevue Community Center

\$5(R) \$6(N) Ages 18/up

13405 Wed 11 a.m.-12:30 p.m. 5/13

#### Introduction to Drawing: Self-Portraits

Explore the art of self-expression by learning how to draw the human face. This beginner-level class focuses on the foundations of facial anatomy and proportion through guided self-portrait exercises. Participants apply drawing techniques that translate across multiple art forms while building confidence and observation skills. No drawing experience is required. Water and a snack are provided.

North Bellevue Community Center

\$5(R) \$6(N) Ages 18/up

13406 Wed 11 a.m.-12:30 p.m. 6/10

## Open Art Studio

Create, connect and refine your craft in a relaxed, artist-led studio environment. Open Art Studio provides time and space to practice techniques, explore ideas and exchange feedback with fellow artists. The studio supports a wide range of media, including drawing, painting, textiles, knitting and needlework. This open-format program encourages creativity, community and artistic growth.

### Crossroads Community Center

**FREE Ages 18/up**

13847 Tue 10 a.m.-2 p.m. 5/5-6/16

### South Bellevue Community Center

**FREE Ages 18/up**

11650 Tue 1-3 p.m. 5/5-6/16

## Dance

### Line Dancing

Move, laugh and learn new dances in a welcoming social setting. This lively class features line dancing set to a variety of popular music, with a caller who walks participants through each dance step by step. The first portion of each class focuses on beginner-friendly dances, then gradually progresses. This class keeps both body and brain active while offering a fun way to connect with others.

### South Bellevue Community Center

**FREE Ages 18/up**

11647 Mon 1-3 p.m. 5/4-6/15

### NBCC Line Dancing

Stay active and social while learning easy-to-follow line dance routines set to upbeat music. This beginner-friendly drop-in class is a great way to exercise, have fun and connect with others. Fees are payable at the door. PlayPass discounts are available.

### North Bellevue Community Center

**\$4(R) \$5(N) Ages 18+**

7085 Fri 1-2:45 p.m. 5/1-8/28

## CISC Line Dancing

Get moving with this fun and energizing line dancing program. Learn choreographed routines set to music while improving coordination, balance and fitness. No partner is needed. This drop-in program is hosted by the Chinese Information & Service Center and open to all adults. PlayPass discounts are available.

### North Bellevue Community Center

**\$4(R) \$5(N) Ages 18+**

7126 Wed 1-2:45 p.m. 5/6-8/26

### Line Dancing

Get your mind and body moving each week with line dancing. Participants will learn a sequence of choreographed steps, through fun, easy-to-follow routines.

### Crossroads Community Center

**FREE Ages 18+**

14258 Mon 5:30-7:30 p.m. 5/18-6/15

## Music

### Sea Mar Gema Chorus

Lift your voice and enjoy singing in Spanish with the Sea Mar Gema Chorus. This welcoming drop-in group brings older adults and community members together through music, connection and the joy of singing. All skill levels are welcome. This program is hosted by volunteers from Sea Mar. Preregistration is not required.

### North Bellevue Community Center

**FREE All Ages**

14307 Fri 10:30-11:30 a.m. 5/1-8/28

### Chorus

Enjoy a welcoming morning of music and community. Sing along with piano accompaniment while enjoying classic songs from the 1920s through the 1960s. No auditions or experience required. Participants may sing in unison or add harmony. There are no performances, just the joy of singing together.

### North Bellevue Community Center

**FREE All Ages**

12056 Fri 10:30 a.m.-12 p.m. 5/1-8/28

### Sounds of Swing Big Band Dance

Enjoy an afternoon of live swing and jazz music with the Sounds of Swing Big Band. Dance, listen and socialize while enjoying classic big band tunes in a lively, welcoming setting. Light refreshments are included. No registration required.

**North Bellevue Community Center**

**\$3(R) \$3(N) Ages 18+**

14331 Mon 1-3 p.m. 5/5-8/25

### Ladies Musical Club Music Concert Series

Enjoy live classical music performed by accomplished musicians in an intimate, welcoming setting. This free public concert series features performances by Ladies Musical Club member musicians and guest artists, offering high-quality classical music close to home. Concerts range from 30 minutes to one hour and are designed to be accessible, engaging and easy to enjoy. The series is part of a long-running regional concert program, with select performances hosted at Crossroads Community Center throughout the year.

**Crossroads Community Center**

**FREE Ages 18/up**

11861 Tue 1-2 p.m. 5/19

## Movement and wellness

### Gentle Yoga

Slow down, stretch and restore with a yoga class designed to support strength, balance and relaxation. Each session blends gentle poses, active strengthening and deep relaxation while emphasizing alignment and joint safety. Props are used to make poses accessible for a wide range of experience levels, helping improve flexibility, balance and overall well-being. Wear comfortable sportswear and bring a yoga mat, strap and two yoga blocks if possible.

**South Bellevue Community Center**

**\$104(R) \$120(N) Ages 13/up**

13416 Tue 11:45 a.m.-12:45 p.m.

**5/5-6/23 \$78(R) \$90(N) Ages 13/up**

13417 Tue 11:45 a.m.-12:45 p.m. 7/7-8/11

### Foam Rolling

Learn simple self-care techniques to reduce muscle tension and improve mobility. This introductory class teaches self-myofascial release using a foam roller to support flexibility, circulation and range of motion. Participants explore techniques for the legs, back, torso and more, along with discussion of additional recovery methods and resources. Bring a towel and your own foam roller.

**South Bellevue Community Center**

**\$13(R) \$15(N) Ages 13/up**

13418 Thu 9:15-10:15 a.m. 5/7

13419 Thu 9:15-10:15 a.m. 5/21

13420 Thu 9:15-10:15 a.m. 6/4

13421 Thu 9:15-10:15 a.m. 6/18

13422 Thu 9:15-10:15 a.m. 7/9

13423 Thu 9:15-10:15 a.m. 7/23

13424 Thu 9:15-10:15 a.m. 8/13



## Sound Bath

Relax deeply through soothing waves of sound and vibration. This meditative experience uses traditional wind and crystal bowl instruments to support relaxation and nervous system calming. Participants are guided to focus on sound, which may help release tension and support overall well-being. This class is designed for relaxation and is not a replacement for medical care.

This class is not recommended for individuals with implanted heart or brain devices.

### South Bellevue Community Center

**\$22.50(R) \$27(N) Ages 13/up**

13711 Sat 10:30-11:45 a.m. 5/9  
 13712 Sat 10:30-11:45 a.m. 5/16  
 13713 Sat 10:30-11:45 a.m. 5/23  
 13714 Sat 10:30-11:45 a.m. 6/6  
 13715 Sat 10:30-11:45 a.m. 6/13  
 13716 Sat 10:30-11:45 a.m. 6/20  
 13717 Sat 10:30-11:45 a.m. 6/27  
 13718 Sat 10:30-11:45 a.m. 7/11  
 13719 Sat 10:30-11:45 a.m. 7/18  
 13720 Sat 10:30-11:45 a.m. 7/25  
 13721 Sat 10:30-11:45 a.m. 8/1  
 13722 Sat 10:30-11:45 a.m. 8/8  
 13723 Sat 10:30-11:45 a.m. 8/15

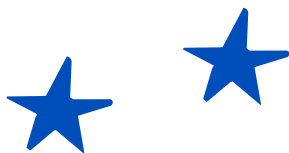
## Tai Chi & Mindful Movement

Find balance, calm and renewed energy through mindful movement. This class blends Chi Kung, Yang family style Tai Chi, stretching, breathwork and meditation to support whole-body wellness. Participants often experience improved focus and relaxation, along with long-term benefits such as flexibility, balance and strength. No equipment is required.

### South Bellevue Community Center

**\$88(R) \$104(N) Ages 18/up**

13669 Fri 10:30-11:30 a.m. 5/1-6/26;  
 No class 6/19.



## Gentle Movement

Rediscover the joy of movement in a class designed to support comfort and confidence. This low-impact class focuses on joint mobility, flexibility, strength and balance through gentle exercises. Stretching, light resistance training and balance work are guided by an experienced instructor who offers individual adaptations. The supportive environment encourages connection, wellness and everyday functional movement.

### South Bellevue Community Center

**\$88(R) \$104(N) Ages 18/up**

13671 Fri 11:45 a.m.-12:45 p.m. 5/1-6/26  
 No class 6/19

## Yoga

### Yoga - All Levels

Build a strong foundation for a lifelong yoga practice. This alignment-focused class supports flexibility, balance and strength while emphasizing safe movement and body awareness. Participants learn sequences, breathing and meditation techniques, with modifications available for injuries or health conditions.

### South Bellevue Community Center

**\$104(R) \$120(N) Ages 13/up**

13558 Wed 6-6:50 p.m. 5/6-6/24

**\$91(R) \$105(N) Ages 13/up**

13559 Wed 6-6:50 p.m. 7/1-8/12

No class 7/22

## Yoga for Women's Health

Support your well-being through a therapeutic yoga practice designed for women. This specialized class focuses on stress reduction, hormone balance and self-care through targeted movement and breathwork. Participants learn the science behind each technique to better understand and support their own health.

### South Bellevue Community Center

**\$77.50(R) \$90(N) Ages 18/up**

13433 Sun 9:15-10:15 a.m. 5/3-5/31

**\$62(R) \$72(N) Ages 18/up**

13434 Sun 9:15-10:15 a.m. 6/7-6/28

**\$46.50(R) \$54(N) Ages 18/up**

13435 Sun 9:15-10:15 a.m. 7/12-7/26

## Strength, cardio and fitness

### Cycling

Start your day strong with an energizing outdoor ride that builds stamina and confidence. This group cycling class improves cardiovascular fitness and riding technique with guidance from experienced instructors. Beginners may contact the South Bellevue Community Center to schedule an introductory lesson and bike set-up session before their first class.

### South Bellevue Community Center

**\$42(R) \$51(N) Ages 13/up**

13574 Mon, Wed 6-7 a.m. 5/4-5/28;

No classes 5/18 and 5/25

**\$63(R) \$76.50(N) Ages 13/up**

13575 Mon, Wed 6-7 a.m. 6/1-6/29

**\$91(R) \$110.50(N) Ages 13/up**

13576 Mon, Wed 6-7 a.m. 7/1-8/12

## Fit 360

Challenge your whole body with a high-energy workout that keeps every class fresh and engaging. This action-packed class combines cardio and strength training using a variety of equipment and exercises designed to keep you moving. Certified instructors offer modifications to support all fitness levels and finish each class with a relaxing cooldown and stretching routine.

### South Bellevue Community Center

**\$77(R) \$91(N) Ages 13/up**

13592 Mon, Wed 9:15-10:15 a.m. 5/4-5/27

No class 5/25

**\$99(R) \$117(N) Ages 13/up**

13593 Mon, Wed 9:15-10:15 a.m. 6/1-6/29

13594 Mon, Wed 9:15-10:15 a.m. 7/1-7/29

**\$44(R) \$52(N) Ages 13/up**

13595 Mon, Wed 9:15-10:15 a.m. 8/3-8/12

13596 Tue 7-7:50 p.m. 5/5-6/30

### Cycle/Stretch

Ease into fitness with a balanced class that blends gentle cycling and stretching. This beginner-friendly format focuses on mobility, comfort and steady progress, making it ideal for those new to exercise or returning after time away.

### South Bellevue Community Center

**\$56(R) \$68(N) Ages 13/up**

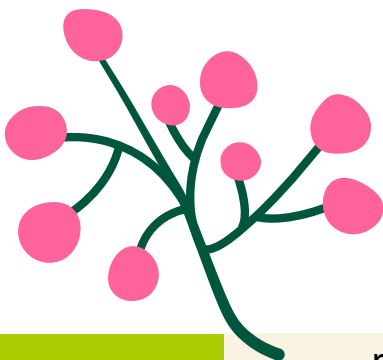
13571 Tue, Thu 10:30-11:30 a.m. 5/5-5/28

**\$63(R) \$76.50(N) Ages 13/up**

13572 Tue, Thu 10:30-11:30 a.m. 6/2-6/30

**\$91(R) \$110.50(N) Ages 13/up**

13573 Tue, Thu 10:30-11:30 a.m. 7/2-8/13





## Pilates

Strengthen your core and improve balance through focused, controlled movement. This Pilates class emphasizes joint mobility, flexibility and stability using resistance bands, small physio balls and light weights. Exercises are approachable and adaptable for all fitness levels.

### South Bellevue Community Center

**\$108.50(R) \$126(N) Ages 13/up**

13709 Fri 9:15-10:15 a.m. 5/1-6/12

**\$108.50(R) \$126(N) Ages 13/up**

13708 Mon 9:15-10:15 a.m. 5/4-6/22

No class 5/25

**\$62(R) \$72(N) Ages 13/up**

13710 Fri 9:15-10:15 a.m. 7/3-7/31

No class 7/17

## Active Adult Fitness

Move with purpose in a balanced workout that supports strength, mobility and confidence. This all-levels class blends elements of Tai Chi, yoga, Pilates, cardio, strength training and balance work for a well-rounded fitness experience. Participants may register for individual days or both sessions to benefit from each instructor's expertise.

### South Bellevue Community Center

**\$80(R) \$96(N) Ages 18/up**

13560 Mon 10:30-11:30 a.m. 5/4-6/29;

No class 5/25

13561 Wed 10:30-11:30 a.m. 5/6-6/24

**\$60(R) \$72(N) Ages 18/up**

13563 Wed 10:30-11:30 a.m. 7/1-8/12;

No class 7/8

## Physical Disability Exercise (adaptive)

Build strength, improve mobility and stay active in this adaptive fitness class developed and adapted for adults with physical disabilities. Participants work toward personal fitness goals while improving range of motion, maintaining strength and connecting with others in a supportive, social environment.

All new participants must meet with Mary Boyle prior to registering. Call 425-452-4118 or email [mboyle@bellevuewa.gov](mailto:mboyle@bellevuewa.gov) to schedule an appointment.

No class on holidays.

### Highland Community Center

**\$110(R) \$132(N) Ages 18/up**

13448 (Morning session)

Tue, Thu 11 a.m.-12 p.m. 3/31-6/18

13578 (Afternoon session)

Tue, Thu 12 p.m.-1:30 p.m. 3/31-6/18

13590 (Morning session)

Tue, Thu 11 a.m.-12 p.m. 6/30-9/17

13591 (Afternoon session)

Tue, Thu 12 p.m.-1:30 p.m. 6/30-9/17

## Zumba

Turn your workout into a dance party powered by high-energy music. Zumba combines easy-to-follow rhythms with full-body movement for a fun and effective cardio workout. Toning sessions add light weights to strengthen arms, legs and glutes for a well-rounded routine.

### South Bellevue Community Center

**\$70(R) \$84(N) Ages 13/up**

13673 Mon 10:30-11:30 a.m. 5/4-6/22

No class 5/25

13676 Mon 6-6:50 p.m. 5/4-6/22

No class 5/25

**\$80(R) \$96(N) Ages 13/up**

13688 Fri 10:30-11:30 a.m. 5/1-6/26

No class 6/19

**\$40(R) \$48(N) Ages 13/up**

13689 Mon 6-6:50 p.m. 7/6-7/27

13690 Fri 10:30-11:30 a.m. 7/3-7/24

## Functional Fitness

Train your body for real-life movement and everyday strength. This class focuses on compound, functional exercises that improve balance, agility, range of motion and coordination. Moderate intensity and adaptable movements make the class accessible while still delivering a strong, full-body workout.

**South Bellevue Community Center**

**\$88(R) \$104(N) Ages 18/up**

13567 Tue 9:15-10:15 a.m. 5/5-6/23

## Total Body Fitness

Build strength, boost endurance and break a sweat in this full-body workout. Classes use dumbbells, resistance bands, bodyweight exercises and agility drills to target major muscle groups and core strength. Each session delivers a motivating, high-energy workout led by a certified instructor.

**South Bellevue Community Center**

**\$88(R) \$104(N) Ages 16/up**

13618 Tue, Thu 6-6:50 a.m. 5/5-5/28

**\$99(R) \$117(N) Ages 16/up**

13627 Tue, Thu 6-6:50 a.m. 6/2-6/30

**\$99(R) \$117(N) Ages 16/up**

13630 Tue, Thu 6-6:50 a.m. 7/2-7/30

**\$44(R) \$52(N) Ages 16/up**

13631 Tue, Thu 6-6:50 a.m. 8/4-8/13

## Total Body Fitness – Virtual

Get a powerful workout from home with live, instructor-led virtual training. This online class focuses on bodyweight and agility-based exercises designed for limited space while still delivering effective strength and cardio benefits. Participants receive access details before the first class.

**South Bellevue Community Center**

**\$44(R) \$52(N) Ages 16/up**

13641 Tue 6-6:50 a.m. 5/5-5/26

**\$55(R) \$65(N) Ages 16/up**

13653 Tue 6-6:50 a.m. 6/2-6/30

**\$66(R) \$78(N) Ages 16/up**

13663 Tue 6-6:50 a.m. 7/7-8/11

## Jazzercise

Dance, sweat and smile your way through a fun and effective workout. Jazzercise blends aerobic exercise, HIIT cardio and dance fitness into a class that is energetic, welcoming and adaptable for all fitness levels. Classes are ongoing and participants may join at any time. Please email [sbjazzercise@gmail.com](mailto:sbjazzercise@gmail.com) for details and pricing.

**South Bellevue Community Center**

**Ages 16/up**

12246 Mon-Fri 9:15-10:15 a.m. 5/1-6/26

13697 Mon-Fri 9:15-10:15 a.m. 6/27-8/14

13697 Sat 8:15-9:15 a.m. 5/2-8/15

## CISC Tai Chi

Improve balance, posture and relaxation through the gentle movements of Chi Kung and Tai Chi. This class focuses on slow, controlled exercises that support strength, flexibility and overall wellness. This program is coordinated by the Chinese Information & Service Center. For questions, contact Boliver Choi at [boliverc@cisc-seattle.org](mailto:boliverc@cisc-seattle.org).

**North Bellevue Community Center**

**\$4(R) \$4(N) Ages 18+**

14320 Thu 9:30-10:30 a.m. 5/7-8/27

## Games and enrichment

### Drop-in Duplicate Bridge

Play duplicate bridge in a relaxed, social environment. Bring a partner or sign up on-site to be paired with another player. All skill levels are welcome. No pre-registration required.

**North Bellevue Community Center**

**FREE Ages 18+**

14334 Fri 12:15-3:30 p.m. 5/1-8/28



## Games Room

Play, connect and unwind in a welcoming space built for fun and friendly competition. The Crossroads Community Center Games Room features table tennis, pool, air hockey, Giant Connect Four, tabletop XL Jenga and a wide variety of classic table games. Participants are welcome to drop in during business hours to socialize, sharpen their minds and enjoy games with friends, family or new connections.

### Crossroads Community Center

**FREE** Ages 18/up

13828 Mon, Tue, Thu, Fri 8 a.m.-2 p.m. 5/1-6/18

13830 Wed 9 a.m.-12 p.m. 5/6-6/17

## Bridge Bunch

Enjoy a classic card game in a relaxed, social setting. This drop-in group welcomes those who are learning, returning to the game or looking to improve their skills through regular play. Bridge Bunch offers a friendly way to build strategy, focus and community while enjoying a favorite pastime.

### South Bellevue Community Center

**FREE** Ages 18/up

11652 Wed 1-3 p.m. 5/6-6/17

## Board Game Bonanza

Roll the dice, make your move and dive into an afternoon of great games. This drop-in gathering invites board game enthusiasts to play, compete and connect using a wide variety of games.

Whether you are trying something new or playing a favorite, Board Game Bonanza is a fun, social way to spend the afternoon.

### South Bellevue Community Center

**FREE** Ages 18/up

11654 Fri 1-3 p.m. 5/1-6/12



## Social Activities

### Cards & Coffee

You'll connect, play and unwind while enjoying coffee, cards and conversation in a welcoming social setting. Participants choose from classic card and tabletop games like carrom, cribbage and mahjong, learn new favorites and enjoy organic conversation at their own pace. Staff help start games and welcome newcomers. This program builds connection, and keeps minds active through relaxed, friendly play.

### Highland Community Center

**FREE** Ages 50/up

13962 Mon, Tue 03/30-6/30

### Coffee & Coloring

Relax with a cup of coffee, friendly conversation and calming coloring activities. Choose from a variety of adult coloring pages with pencils, crayons and markers provided, or bring your own supplies. Prefer to just chat? Stop by and enjoy a peaceful morning with good company.

### North Bellevue Community Center

**FREE** Ages 18+

14332 Fri 9:30-11:30 a.m. 5/1-8/28

## Sports

### Basketball

#### Adult Basketball

Squeeze in a pickup game and keep your skills sharp with drop-in adult hoops. This open gym program offers a casual, self-directed way to stay active, competitive and connected on the court.

### Crossroads Community Center

**\$4(R) \$5(N)** Ages 18/up

13817 Fri 12-2 p.m. 5/1-6/12

13818 Sat 10 a.m.-12 p.m. 5/2-8/29



### Drop-in Basketball

Play when it fits your schedule with flexible drop-in basketball sessions. This adult-only open gym provides structured court time for informal games and individual play in a welcoming recreational setting.

#### South Bellevue Community Center

\$4(R) \$4.80(N) Ages 18/up

13597 Thu, Sat 6-8 p.m. 5/1-8/16

#### Highland Community Center

\$4(R) \$5(N) Ages 18/up

13965 Tue 11:30 a.m-1:30 p.m. 3/17-9/18

13965 Thu 11:30 a.m-1:30 p.m. 3/17-9/18

13965 Fri 1-3 p.m 3/17-9/18

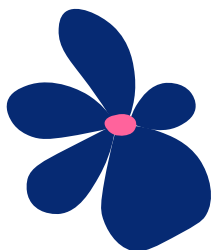
### Spring Men's Sunday Night League

Compete in a structured adult basketball league with official referees and postseason play. Teams are guaranteed eight games, including playoffs and a championship matchup. This league is designed for organized team competition, with free agent options available.

#### Highland Community Center & Park

\$681(R) \$681(N) Ages 18/up

14042 Sun 5-10 p.m. 5/3-6/21



## Pickleball

### Drop-in Pickleball

Play pickleball early, midday or after work with flexible drop-in options. This adult-only open gym format supports recreational play without instruction or organized teams.

#### South Bellevue Community Center

\$4(R) \$4.80(N) Ages 18/up

13599 Mon, Thu, Fri 6-8 a.m. 5/1-8/14

#### Crossroads Community Center

\$4(R) \$5(N) Ages 18/up

13823 Mon-Thu 8-11 a.m. 5/4-6/18

13824 Mon, Tue 12-2 p.m. 5/4-6/16

13825 Thu 6-8 p.m. 5/7-8/27

#### North Bellevue Community Center

\$4(R) \$5(N) Ages 18+

14324 Tue, Thu 6-8 p.m. 5/5-8/25

14325 Mon, Wed, Fri 3-5 p.m. 5/4-8/31

#### Hidden Valley Sports Park

\$4(R) \$5(N) Ages 18+

14326 Tue, Wed 10 a.m.-12 p.m. 5/5-8/26

14327 Fri 12:30-2:30 p.m. 5/1-8/28

### Adult Beginner Pickleball

Learn the fundamentals and build confidence on the court. This progressive program introduces pickleball skills, rules, scoring and etiquette while supporting steady skill development. Instruction helps participants grow toward independent and social play.

#### South Bellevue Community Center

\$60(R) \$72(N) Ages 18/up

13614 Tue 8:30-10 a.m. 5/5-6/9

## 2-Week Pickleball Skills & Drill

Refine technique and elevate your pickleball game through focused drills. This short-format class builds on introductory skills with targeted practice in ground strokes, volleys, dinks, serves and game strategy. Advanced registration is required.

**South Bellevue Community Center**

**\$20(R) \$24(N) Ages 18/up**

13615 Thu 8:30-10 a.m. 5/7-5/14

13616 Thu 8:30-10 a.m. 5/21-5/28

13617 Thu 8:30-10 a.m. 6/4-6/11

## Badminton

### Drop-in Badminton

Enjoy casual badminton play in a relaxed, social environment. Drop in for open court time designed for recreational play and friendly competition.

**South Bellevue Community Center**

**\$4(R) \$4.80(N) Ages 18/up**

13598 Mon, Wed 6-8 p.m. 5/1-8/16

### Badminton Clinic

Get started with badminton in a welcoming, beginner-focused clinic. This one-time session introduces rules, terminology and basic skills while allowing time for guided play. All equipment is provided and advanced registration is required.

**South Bellevue Community Center**

**\$10(R) \$12(N) Ages 18/up**

13601 Mon 8:30-10 a.m. 5/4

13602 Wed 8:30-10 a.m. 5/6

13603 Mon 8:30-10 a.m. 5/11

13604 Wed 8:30-10 a.m. 5/13

13605 Mon 8:30-10 a.m. 5/18

13606 Wed 8:30-10 a.m. 5/20

13607 Wed 8:30-10 a.m. 5/27

13608 Mon 8:30-10 a.m. 6/1

13609 Wed 8:30-10 a.m. 6/3

13610 Mon 8:30-10 a.m. 6/8

13611 Wed 8:30-10 a.m. 6/10

13612 Mon 8:30-10 a.m. 6/15

13613 Wed 8:30-10 a.m. 6/17

## Billiards

### Drop-in Billiards

Play pool on two regulation-size tables during business hours. Balls, cues, racks and chalk are provided.

**North Bellevue Community Center**

**FREE Ages 18+**

14323 Weekdays 9 a.m.-8 p.m. 5/1-8/31

## Cribbage

### Drop-in Cribbage

Enjoy a friendly game of cribbage in a welcoming, social setting. Players of all skill levels are welcome. No registration required. Just drop in and join a game.

**North Bellevue Community Center**

**FREE Ages 18+**

14333 Thu 10 a.m.-12 p.m. 5/7-8/27

## Adult Tennis

### Beginning

The beginning level is designed to provide basic skills needed to play tennis including etiquette, rules, and scoring. USTA level of 2.0.

**Robinswood Tennis Center**

**\$147(R) \$147(N) Ages 18/up**

11197 Mon 12-1:15 p.m. 4/27-6/15

**\$168(R) \$168(N) Ages 18/up**

11199 Tue 10:45 a.m.-12 p.m. 4/28-6/16

12196 Tue 1:15-2:30 p.m. 4/28-6/16

11208 Tue 7:45-9 p.m. 4/28-6/16

11201 Wed 11 a.m.-12:15 p.m. 4/29-6/17

11209 Wed 9-10:15 p.m. 4/29-6/17

**\$84(R) \$84(N) Ages 18/up**

12815 Tue 7:45-9 p.m. 6/30-7/21

12817 Wed 9-10:15 p.m. 7/1-7/22

12825 Tue 7:45-9 p.m. 7/28-8/18

12826 Wed 9-10:15 p.m. 7/29-8/19

## Advanced Beginning

The advanced beginning level will build on the basics, reinforce techniques, and add advanced drills on learning how to play doubles. USTA level of 2.5 or higher.

### Robinswood Tennis Center

**\$147(R) \$147(N) Ages 18/up**

11202 Mon 10:45 a.m.-12 p.m. 4/27-6/15

12197 Mon 1:15-2:30 p.m. 4/27-6/15

**\$168(R) \$168(N) Ages 18/up**

11203 Tue 11 a.m.-12:15 p.m. 4/28-6/16

11204 Tue 12-1:15 p.m. 4/28-6/16

11210 Tue 9-10:15 p.m. 4/28-6/16

11206 Wed 12:15-1:30 p.m. 4/29-6/17

11211 Wed 7:45-9 p.m. 4/29-6/17

**\$84(R) \$84(N) Ages 18/up**

12816 Tue 9-10:15 p.m. 6/30-7/21

12818 Wed 7:45-9 p.m. 7/1-7/22

12827 Tue 9-10:15 p.m. 7/28-8/18

12828 Wed 7:45-9 p.m. 7/29-8/19

## Intermediate

The intermediate level is for participants who already have sound fundamentals and are working on advanced techniques such as spin serves, continental grip volleys, slice backhand, and basic strategies. USTA level 3.0 or higher.

### Robinswood Tennis Center

**\$147(R) \$147(N) Ages 18/up**

11207 Mon 12:15-1:30 p.m. 4/27-6/15



## Week-to-Week Tennis Classes

### Cardio Tennis

Combine tennis drills with aerobic fitness for a high-energy workout. This fast-paced class blends movement, conditioning and tennis skills into a fun, calorie-burning session. Registration opens 7 days in advance at noon and is non-refundable.

### Robinswood Tennis Center

**\$14(R) \$14(N) Ages 18/up**

Mon 1:30-2:30 p.m.

Wed 1:30-2:30 p.m.

Wed 6:30-7:30 p.m.

Thu 1:15-2:15 p.m.



## Volleyball

### Drop-in Volleyball

Serve, set and spike during open gym volleyball sessions. This drop-in program offers structured court time for recreational play.

### Crossroads Community Center & Park

**\$4(R) \$5(N) Ages 18/up**

13819 Wed 6-8 p.m. 5/6-8/26

13820 Sat 12-2 p.m. 5/2-8/29

### Hidden Valley Sports Park

**\$4(R) \$5(N) Ages 18+**

14328 Mon, Fri 10 a.m.-12 p.m. 5/1-8/31

## ADAPTIVE RECREATION

### Community events

#### Barn Dance

*This event is designed and adapted for adults with intellectual disabilities.*

Enjoy an evening of music, dancing and community at this welcoming barn dance. Kick up your heels to lively country tunes, meet new friends and share a fun night of laughter and connection.

Pre-registration is encouraged. Registration will also be accepted at the door.

#### Highland Community Center & Park

**\$10(R) \$12(N) Ages 16+**

**FREE admission for caregivers and parents**

**13380 Fri 6-8:30 p.m. 5/8**

#### Aloha Picnic & Dance '26

*This event is designed and adapted for adults with intellectual disabilities.*

Celebrate summer with music, movement and community at this festive evening event. Enjoy a relaxed picnic followed by an upbeat Aloha-themed dance designed to bring friends together in a fun, welcoming atmosphere. This annual gathering is a great way to connect, celebrate and enjoy a warm summer night.

#### Highland Community Center

**\$10(R) \$12(N) Ages 16/up**

**13589 5-8:30 p.m. 8/14**



### Adaptive drop-in sports

#### Fitness/Exercise Room

Welcome to our inclusive fitness room featuring adaptive equipment to support your personal goals. Whether you want to build strength, increase endurance or improve flexibility, this drop-in space helps you stay active your way.

#### Highland Community Center & Park

**\$4(R) \$5(N) Ages 18/up**

13963 Mon 9 a.m-5 p.m.

13963 Tue 2-5 p.m.

13963 Wed 9 a.m-5 p.m.

13963 Thu 2-5 p.m.

13963 Fri 9 a.m-4 p.m.

#### Adult Wheelchair Basketball

Experience the excitement of basketball in a supportive and inclusive environment. Develop your skills, enjoy friendly competition and connect with other players while staying active.

#### Highland Community Center & Park

**\$4(R) \$5(N) Ages 18/up**

13991 Wed 6-9 p.m 3/18-9/16

### Fitness and movement

#### Full Fitness

*This class is designed and adapted for adults with intellectual disabilities.*

This course meets twice a week to discuss nutrition and how to implement a healthy lifestyle over dinner. Participants provide their own meal for each class. After dinner, the group will explore and try various exercises focusing on strength, balance, flexibility and control.

All new participants must meet with Mary Boyle prior to registering. Please call 425-452-4118 or e-mail [mboyle@bellevuewa.gov](mailto:mboyle@bellevuewa.gov) for your appointment.

#### Highland Community Center & Park

**\$64(R) \$87(N) Ages 18/up**

13580 Mon 5-7 p.m. 6/29-8/31

**\$94(R) \$113(N) Ages 18/up**

13583 Tue, Thu 5-5:30 p.m. 6/30-9/3

### Adaptive Tennis

Learn tennis fundamentals in an encouraging and supportive setting. This adapted class focuses on skill development, participation and confidence while enjoying the game at a comfortable pace.

Registration is completed in person with the instructor to ensure the best participant experience. Contact the front desk at 425-452-7690 for assistance or check the Robinswood Tennis Center website for session availability [BellevueWA.gov/tennis](http://BellevueWA.gov/tennis).

#### Robinswood Tennis Center

**\$56(R) \$56(N) Ages 14/up**

11217 Wed 4-5 p.m. 5/6-6/17

### Softball

*This class is designed and adapted for adults with intellectual disabilities.*

Exercise and fun are rolled into one! New players at all levels of ability are welcome. We practice twice a week, and Special Olympic competition is optional. Coaches provide leadership at the Special Olympic tournaments.

#### Highland Community Center & Park

**\$76(R) \$91(N) Ages 18/up**

13584 Tue, Thu 6:30-8 p.m. 6/30-9/3

### Physical Disability Exercise

*This class is developed and adapted for adults with physical disabilities.*

Whether you are seeking to maintain motor strength, enhance range of motion or build your social network this fitness course has something for you.

#### Highland Community Center & Park

**\$110(R) \$132(N) Ages 18/up**

13590 Tue, Thu 11 a.m.-12 p.m. 6/30-9/17

13591 Tue, Thu 12-1:30 p.m. 6/30-9/17

### Indoor Bocchia

*This class is designed and adapted for adults with intellectual disabilities.*

Discover the excitement of bocchia, a precision ball sport that combines strategy and skill. Participants throw, kick or use a ramp to place their ball as close as possible to the target, known as the jack. This inclusive indoor activity encourages focus, friendly competition and teamwork.

#### Highland Community Center & Park

**\$64(R) \$77(N) Ages 18/up**

13588 Sat 10 a.m.-12 p.m. 7/11-9/5

## Games and enrichment

### BINGO

*This class is adapted and designed for adults with intellectual disabilities.*

Get ready for excitement, laughter and friendly competition. This adapted BINGO program offers chances to win prizes while enjoying a lively group experience. It is a fun way to build social skills, focus and community connection.

#### Highland Community Center & Park

**\$53(R) \$64(N) Ages 18/up**

13586 Wed 7-8 p.m. 7/1-9/2

### Virtual BINGO

*This class is designed for adults with intellectual disabilities.*

BINGO goes virtual! Each week the BINGO game will be hosted on Zoom. Keep an eye on your email inbox to receive your BINGO card. You will use the same BINGO card for all weeks.

#### Hosted virtually by Highland Community Center

**\$53(R) \$64(N) Ages 18/up**

13587 Wed 7-8 p.m. 7/1-9/2

## Movie Time

*This class is designed and adapted for adults with intellectual disabilities.*

Relax, unwind and enjoy a movie night with friends. Bring your dinner and enjoy a movie in-house with your peers. Participants can bring up to two movies (rated: G, PG, or PG13) to submit to the group vote each week.

**Highland Community Center & Park**

**\$53(R) \$64(N) Ages 18/up**

13585 Wed 5-7 p.m. 7/1-9/2

## Social Club

*This is adapted and designed for adults with intellectual disabilities.*

Make friends and enjoy weekly activities designed for connection and fun. Social Club features rotating activities such as game nights, karaoke and group challenges in a lively, welcoming environment. Participants build friendships while enjoying a sense of belonging.

**Highland Community Center & Park**

**\$53(R) \$64(N) Ages 18/up**

13581 Mon 7-8 p.m. 6/29-8/31

## Virtual Trivia Night

*This class is designed for adults with intellectual disabilities.*

Put your knowledge to the test in a fun and inclusive virtual setting. This online program features themed trivia designed for participation and enjoyment rather than competition. Everyone has a chance to play, learn and laugh together from home.

**Hosted virtually by Highland Community Center**

**\$53(R) \$64(N) Ages 18/up**

13582 Mon 7-8 p.m. 6/29-8/31

## Highland Hangout

*This is designed and adapted for adults with intellectual disabilities.*

Unwind your way in a relaxed, social space built around choice and comfort. Participants can enjoy games, art, puzzles, music or casual conversation while connecting with peers. Highland Hangout encourages independence, creativity and community in a laid-back setting. Drop in, relax and make the afternoon your own.

**Highland Community Center & Park**

**\$53(R) \$64(N) Ages 18/up**

13579 Mon-Thu 3-5 p.m. 6/29-9/3

# Teen Lifeguard Skills Clinic

*in partnership with* **SPLASHForward**

**BELLEVUE AQUATIC CENTER**

**Friday Dates: May 1 and July 10**

**Time: Skills Clinic 8-9 p.m.**

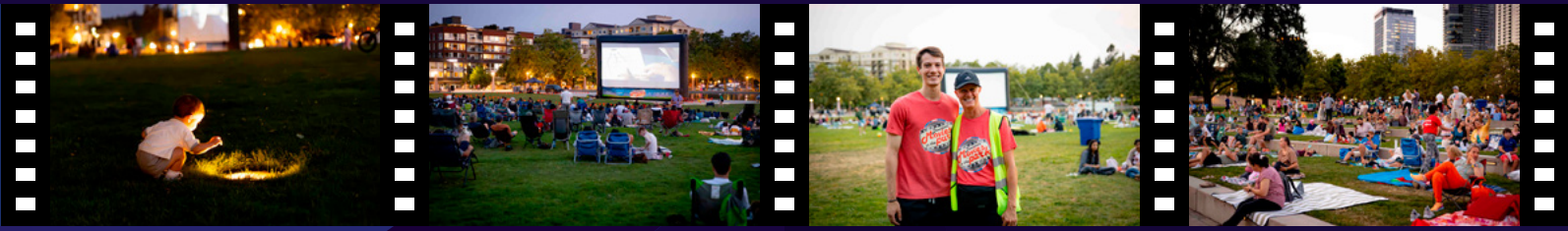
**Followed by a FREE PIZZA SOCIAL: 9-9:30 p.m.**

\*If you qualify for the City of Bellevue's Financial Assistance the fee will be waived. To learn more go to [BellevueWA.gov/scholarship](http://BellevueWA.gov/scholarship).



**REGISTER NOW**

[BellevueWA.gov/lifeguard-skills](http://BellevueWA.gov/lifeguard-skills)



Pre-movie entertainment begins around 7 p.m. Movies begin at dusk. 425-452-4240.



**Movies in the Park**  
**FREE | Tuesdays**  
**July 14-August 18**

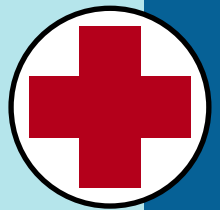
July 14, 21, 28 and Aug. 4, 11, 18



**Movies in the Park**  
**FREE | Thursdays**  
**July 30-August 20**

July 30 and Aug. 6, 13, 20

## American Red Cross Lifeguard Training Hybrid certification course



Train for a critical role in aquatics safety and earn American Red Cross lifeguard certification.

This hybrid course combines online learning with in-person, hands-on training. Participants learn water rescue skills, CPR, AED use and first aid. Successful completion earns American Red Cross Lifeguarding, First Aid, CPR and AED certification, valid for two years.

### Course format

- Online coursework: approximately seven hours, completed before the first in-person session
- In-person training: rescue techniques, surveillance, teamwork and emergency response
- Full attendance and participation required

### Prerequisites

Tested on the first day and include a swim-tread-swim sequence and timed deep-water object retrieval.

**Bellevue Aquatic Center | Ages 15+**  
**\$175 resident, \$210 non-resident**

### Session options:

13794 | May 15-17 | Fri 3:30-9 p.m. | Sat, Sun 9 a.m.-6 p.m.

13793 | July 17-19 | Fri 3:30-9 p.m. | Sat, Sun 9 a.m.-6 p.m.



# OLDER ADULT ACTIVITIES

## Art & creativity

### Art for Older Adults

Enjoy creative enrichment and social connection in this weekly art program for older adults. Instructors guide participants of all skill levels through hands-on projects using watercolor, charcoal, pencil, pen, pastel, gouache, canvas, paper and textiles. Each session offers a chance to learn new techniques, explore different materials and create in a welcoming, social setting. Space is limited and advance registration is required.

North Bellevue Community Center

FREE Ages 55/up

- 13853 Wed 1-2:30 p.m. 5/6
- 13854 Wed 1-2:30 p.m. 5/13
- 13855 Wed 1-2:30 p.m. 5/20
- 13856 Wed 1-2:30 p.m. 5/27
- 13857 Wed 1-2:30 p.m. 6/3
- 13858 Wed 1-2:30 p.m. 6/10
- 13859 Wed 1-2:30 p.m. 6/17
- 13860 Wed 1-2:30 p.m. 6/24
- 13861 Wed 1-2:30 p.m. 7/1
- 13862 Wed 1-2:30 p.m. 7/8
- 13863 Wed 1-2:30 p.m. 7/15
- 13864 Wed 1-2:30 p.m. 7/22
- 13866 Wed 1-2:30 p.m. 7/29
- 13867 Wed 1-2:30 p.m. 8/5
- 13868 Wed 1-2:30 p.m. 8/12
- 13869 Wed 1-2:30 p.m. 8/19
- 13870 Wed 1-2:30 p.m. 8/26

### Introduction to Drawing: Figure & Gesture

Learn to capture the movement and energy of the human form through figure and gesture drawing. This beginner-friendly class introduces simple techniques such as the line of action through guided exercises led by local multidisciplinary artists. Participants sketch timed poses using a web-based learning tool featuring adult nude models. No drawing experience required. Water and a snack are provided.

\$5(R) \$6(N) Ages 18+

11603 Wed 11 a.m.-12:30 p.m. 5/13

### Introduction to Drawing: Self-Portraits

Explore the basics of drawing the human face while expressing your own creativity. This beginner-friendly class introduces facial anatomy and proportion through guided self-portrait exercises. Participants build observation and drawing skills in a relaxed, supportive setting. No drawing experience required. Water and a snack are provided.

\$5(R) \$6(N) Ages 18+

13406 Wed 11 a.m.-12:30 p.m. 6/10

## Fitness and sports

### SilverSneakers

Stay active and independent with this nationally recognized fitness program designed for adults 65 and older. Classes focus on building strength, improving balance and increasing mobility to support everyday movement and fall prevention. If SilverSneakers is included in your Medicare plan, you can attend at no additional cost. Programs are drop-in and payable at the door.





### SilverSneakers Classic

Build strength, endurance and range of motion through guided exercises and fall prevention drills. Participants use chairs, handheld weights and resistance tubing to support safe, effective workouts.

**North Bellevue Community Center**

**\$6(R) \$7(N) Ages 18+**

14314 Mon, Wed, Fri 11 a.m.-12 p.m. 5/1-8/31

### SilverSneakers Yoga

Improve flexibility, balance and relaxation through gentle seated and standing yoga poses using a chair for support. This class helps increase mobility while promoting overall wellness.

**North Bellevue Community Center**

**\$6(R) \$7(N) Ages 18+**

14315 Mon, Wed, Fri 9:30-10:30 a.m. 5/1-8/31

### Chair Yoga for Older Adults

Enjoy the benefits of yoga in a gentle, accessible format designed for comfort and confidence. This chair-based class uses supportive props and mindful movement to improve flexibility, balance and relaxation without needing to get down on the floor. Guided breathing and calm pacing create a safe, welcoming space to move with ease and feel your best.

**South Bellevue Community Center**

**\$77.50(R) \$90(N) Ages 55/up**

13436 Sun 10:30-11:30 a.m. 5/3-5/31

**\$62(R) \$72(N) Ages 55/up**

13437 Sun 10:30-11:30 a.m. 6/7-6/28

**\$46.50(R) \$54(N) Ages 55/up**

13438 Sun 10:30-11:30 a.m. 7/12-7/26

### Senior Drill & Play Tennis

Stay active and sharpen your tennis skills through structured drills and friendly play. These sessions combine instruction, point play and social interaction for an enjoyable way to stay moving on the court. Weekly registration offers flexibility for participants and is non-refundable.

**Robinswood Tennis Center**

**\$15(R) \$15(N) Ages 50/up**

Tue 1:30-2:45 p.m.

Tue 6:30-7:45 p.m.

## Community and connection

### Cards & Coffee

Connect, play and unwind while enjoying coffee, cards and conversation in a welcoming social setting. Participants choose from classic card and tabletop games like carrom, cribbage and mahjong, learn new favorites and enjoy organic conversation at their own pace. Staff help start games and welcome newcomers. This program builds connection, and keeps minds active through relaxed, friendly play.

**Highland Community Center**

**FREE Ages 50/up**

13962 Mon, Tue 03/30-6/30

### Community Lunch

Enjoy a nutritious lunch and friendly conversation at this welcoming community meal for older adults. Share a healthy meal while connecting with neighbors and building new friendships. Meals are served first come, first served starting at noon, with lunch tickets available at 11 a.m. Weekly menus and schedules are available online or at North Bellevue Community Center. Donations are appreciated.

**North Bellevue Community Center**

**\$5(R) \$5(N) Ages 55+**

14308 Mon, Fri 12-1 p.m. 5/1-8/31



### **Monday Mixer**

Start the week with conversation, games and creativity at this welcoming social program for older adults. Each Monday features a different activity such as music, crafts, games or light refreshments. Bring a friend or meet new people while enjoying a relaxed, friendly atmosphere. Pick up a monthly flyer for the full activity schedule.

**North Bellevue Community Center**

**FREE Ages 55+**

11584 Mon 1-3 p.m. 5/4-8/31

## **Learning and support**

### **CISC ESL Instruction**

Build confidence speaking English in a supportive, welcoming class taught in English and Cantonese/Mandarin. Participants learn basic vocabulary and simple phrases for everyday communication while practicing in a comfortable, encouraging environment. Ideal for learners with little or no English experience. Registration is required to join online. In-person participants may drop in without registration.

**North Bellevue Community Center**

**FREE Ages 50+**

14311 Wed, Fri 9:15-10:45 a.m. 5/1-8/28

### **One-on-One Tech Help**

Get personalized support to feel more confident using your devices. An experienced instructor provides one-on-one help with laptops, smartphones, iPads and tablets. Learn practical skills to use your devices safely and stay connected with family, information and online services.

**North Bellevue Community Center**

**\$4(R) \$9(N) Ages 55+**

Monday afternoons, 1 p.m., 2 p.m. and 3 p.m. time slots available

### **Moving to a Simpler Life with Elder-Move Alliance**

Learn how to simplify your home and free up time for what matters most. These expert-led seminars explore practical steps toward downsizing, decluttering and creating a lifestyle that better supports personal well-being, family and friendships. This two-day session offers guidance, resources and reassurance during times of transition.

**South Bellevue Community Center**

**FREE All Ages**

12773 Thu 2-4 p.m. 5/21-5/28

### **Parkinson's Disease Support Group**

Connect with others who understand the challenges of Parkinson's disease in a supportive, welcoming setting. Participants share experiences, exchange resources and build community with others facing similar journeys. This group meets on the first Wednesday of each month.

**North Bellevue Community Center**

**FREE**

14322 Wed 5-7 p.m. 5/6-8/26

## **Music**

### **CISC Chinese Musical Instrument Group**

Gather with fellow musicians to play and enjoy traditional Chinese music in a welcoming, social setting. This informal group meets weekly for participants to share music and connect through a shared appreciation of Chinese instruments. This is not an instructional class. Participants should bring their own instrument.

**North Bellevue Community Center**

**FREE Ages 55+**

14313 Mon 9:30 a.m.-1:30 p.m. 5/4-8/31

## CISC Chorus

Enjoy singing together in the CISC Chorus, a welcoming community group open to all skill levels. Singing is a fun way to lift your spirits, stay active and connect with others. No auditions are required, and new singers are welcome anytime. Drop in and join the group.

**North Bellevue Community Center**

**FREE Ages 50+**

14306 Wed 9:30-11:30 a.m. 5/6-8/26

## Multicultural Social Services

### Sea Mar Community Program

Spanish-speaking older adults can connect, learn and stay active through this weekly community program. Activities may include wellness seminars, ESL classes, social engagement opportunities, exercise sessions and shared meals. The program encourages connection between Spanish- and English-speaking participants.

**North Bellevue Community Center**

**FREE Ages 18+**

14316 Fri 9 a.m.-2 p.m. 5/1-8/28

### CISC Drop-in SHIBA Assistance

Receive free, confidential help understanding Medicare and other health care coverage options. Advisors assist participants with reviewing benefits, determining eligibility and completing enrollment.

**North Bellevue Community Center**

**FREE Ages 18+**

14317 Wed 9:30-11 a.m. 5/6-8/26

## Conversational English

Build confidence speaking English for everyday situations through interactive conversation practice. Participants learn common phrases used for banking, shopping, medical visits and travel while improving pronunciation and communication skills. Class size is limited to 15 participants to allow for personal attention.

**North Bellevue Community Center**

**FREE Ages 55+**

14318 Wed 9-11:30 a.m. 5/6-8/26

## CISC Information & Assistance

Access short-term support to connect with vital public services. This walk-in program assists low-income families and adults with disabilities who have limited English proficiency. Staff provide language support and guidance with applications, resources and referrals.

**North Bellevue Community Center**

**FREE Ages 18+**

14319 Thu 9 a.m.-12 p.m. 5/7-8/27

## IACS Community Program

Celebrate Indian culture, wellness and community with the Indian American Community Services program. Participants enjoy health education, mindfulness exercises, group activities and shared meals while connecting across generations.

**North Bellevue Community Center**

**FREE Ages 55+**

14321 Thu 9 a.m.-3 p.m. and 6-8:30 p.m.  
5/7-8/27

## ELAP Eastside Legal Assistance Program

Access free elder law and probate legal support through this monthly legal clinic. Attorneys provide guidance to older adults on important legal and life planning matters. Appointments are required. Call 425-747-7274 to schedule and confirm income eligibility.

**North Bellevue Community Center**

**FREE Ages 55+**



## Nature, trails and the outdoors

### Afternoon Park Walks

Enjoy the scenes of nature and a simple stroll through Crossroads Park. The walk is less than a mile. Caregivers are encouraged to participate.

**Meet at Crossroads Community Center**

**FREE Ages 50/up**

13388 Mondays 4:30-5:30 p.m. 4/7-6/9

### 50+ Evening Wildlife Walk

Experience the park at dusk and discover wildlife that comes alive after sunset. This relaxed evening walk offers the chance to learn about bats and other nocturnal animals while enjoying fresh air and meaningful conversation.

**Lewis Creek Park**

**FREE Ages 50/up**

13736 Fri 8-9 p.m. 5/1

### Tuesday Trails 50+ Hiking

This easy hiking series is designed for active seniors looking to explore the beautiful trails around Bellevue. We will meet at the North Bellevue Community Center and ride to a trailhead in the Issaquah Alps, Cascades or other scenic areas nearby. Hikes will be generally less than 3 miles and specifically chosen for older adults.

**North Bellevue Community Center**

**\$8(R) \$10(NR)**

12839 Tue Sky Country Trailhead 10 a.m.-2 p.m. 4/14

12840 Tue Evans Creek Preserve 10 a.m.-2 p.m. 4/21

12841 Tue Tradition Lake 10 a.m.-2 p.m. 4/28

12842 Tue Oxbow Lake Loop 10 a.m.-2 p.m. 5/5

12843 Tue Franklin Falls 10 a.m.-2 p.m. 5/12

12844 Tue Osprey Park 10 a.m.-2 p.m. 5/19

13887 Tue Redmond Watershed Preserve 10 a.m.-2 p.m. 5/26

12888 Tue Twin Falls 10 a.m.-2 p.m. 6/2

### TRACKS Park Walks

Explore Bellevue's parks at a comfortable pace while connecting with others. Each guided walk features a new park, light movement and time to enjoy lunch together in a scenic setting. Transportation to and from North Bellevue Community Center is included. Please bring your own lunch and water.

**North Bellevue Community Center**

**\$5(R) \$6(N) Ages 50/up**

12846 Thu 11 a.m.-1 p.m. 5/7 Spiritridge Park

12847 Thu 11 a.m.-1 p.m. 5/14 Adrmore Park

12848 Thu 11 a.m.-1 p.m. 5/21 Mercer Slough

12849 Thu 11 a.m.-1 p.m. 5/28 Killarney Glen Park

## Trips and tours

Explore the region, meet new people and enjoy stress-free travel. Trip fees include roundtrip transportation from North Bellevue Community Center, with optional home pickup available upon request for Bellevue residents. These outings make it easy to get out, connect and enjoy memorable experiences together. This program is funded by the King County Veterans, Seniors and Human Services Levy.

**North Bellevue Community Center**

### Point Defiance Zoo & Aquarium

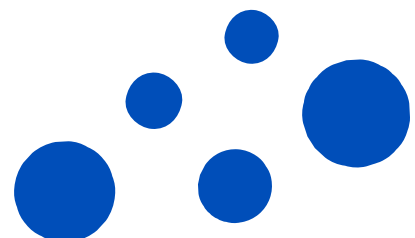
Spend the afternoon discovering wildlife and world-class exhibits. Participants travel together from North Bellevue Community Center and enjoy time exploring animal habitats, aquariums and outdoor shows at their own pace.

Transportation and admission are included.

Participants will meet at the North Bellevue Community Center lobby at 9:45 a.m., and travel together to the destination.

**\$22(R) \$26(N) Ages 55/up**

13089 Tue 9:45 a.m.-4 p.m. 7/14



### Waterways BINGO Lunch Cruise

Cruise local waterways while enjoying lunch, BINGO and scenic narration. This relaxing afternoon aboard a Waterways yacht includes a two-hour cruise on Lake Union and Lake Washington, a delicious lunch, coffee and tea, gratuity and lively games of BINGO.

**\$85(R) \$102(N) Ages 55/up**

13408 10 a.m.-3 p.m. 6/3

### Snoqualmie Falls

Experience the power and beauty of one of Washington's most iconic natural landmarks. Participants may explore paved viewpoints, scenic interpretive trails or a steeper nature hike to the lower falls, depending on comfort level. Transportation is provided, with time to visit the gift shop and enjoy the surroundings.

Participants will meet in the lobby at North Bellevue Community Center at 9:45 a.m. The group will travel together to the falls.

**\$12(R) \$14(N) Ages 55/up**

13113 Tue 9:45 a.m.-3 p.m. 5/5

### Seattle Asian Art Museum with Guided Tour

Celebrate art, culture and heritage with a guided museum visit. This trip includes transportation, museum admission and a docent-led tour highlighting featured exhibits in recognition of Asian American and Pacific Islander Heritage Month.

**\$10(R) \$12(N) Ages 55/up**

13415 Tue 11:30 a.m.-3:45 p.m. 5/19

### Tulalip Casino & Seattle Premium Outlets

Enjoy a full day of entertainment, gaming and shopping north of the city. Participants travel together to Tulalip for casino fun, special promotions and time to browse top outlet stores. Transportation is included. Participants should bring funds for food, gaming and shopping.

**\$10(R) \$12(N) Ages 55/up**

13385 Tue 9:45 a.m.-4 p.m. 6/16



### Inclement Weather Policy

In the event of inclement weather, the City of Bellevue Parks & Community Services will make every effort to clearly communicate the status of facilities and programs, scheduled special events, and rentals. Administration will make an operational decision based upon the safety of participants and employees and the ability to appropriately staff programs and facilities.

Some facilities may open on a modified schedule for drop-in activities. Call the facility for an updated status report. If you are unable to reach the facility, then call the Parks & Community Services Department general information number at 425-452-6885.

Inclement weather can affect park use and trail conditions. Please use caution when visiting park sites during poor weather as trails and other park facilities may become wet and slippery. Park trails may also be closed.

# Community Programs at North Bellevue Community Center

North Bellevue Community Center partners with local nonprofit organizations to provide culturally welcoming programs, education and support services. These programs offer opportunities to connect, learn, stay active and access helpful community resources.

North Bellevue Community Center (北 Bellevue 社区中心) 的社区项目

North Bellevue Community Center (北 Bellevue 社区中心) 与当地非营利组织合作, 提供具有文化包容性的各种项目、教育和支持服务。这些项目为人们提供了交流、学习、保持活力和获取有用的社区资源的机会。

North Bellevue Community Center (नॉर्थ बेलेव्यू सामुदायिक केंद्र) में सामुदायिक कार्यक्रम नॉर्थ Bellevue सामुदायिक केंद्र स्थानीय गैर-लाभकारी संगठनों के साथ मलिकर सांस्कृतिक रूप से स्वागतयोग्य कार्यक्रम, शिक्षा और सहयोग सेवाएं प्रदान करता है। ये कार्यक्रम लोगों को जुड़ने, नई चीजें सीखने, सक्रिय रहने और उपयोगी सामुदायिक संसाधनों तक पहुंच बनाने के अवसर देते हैं।

Programas comunitarios en el North Bellevue Community Center (Centro Comunitario de North Bellevue)

El Centro Comunitario de North Bellevue colabora con organizaciones locales sin fines de lucro para ofrecer programas, educación y servicios de apoyo culturalmente acogedores. Estos programas brindan oportunidades para conectarse con otras personas, aprender, mantenerse activo y acceder a recursos comunitarios útiles.

## Chinese Information & Service Center (CISC)

### About CISC

Chinese Information & Service Center is a nonprofit organization that supports immigrants and their families across King County through community programs, education and social services.

## Programs and services

### Line dancing

Stay active and enjoy time with others while learning choreographed line dance routines that improve balance, coordination and rhythm.

### Tai chi

Practice gentle movements that build balance, flexibility and relaxation while encouraging mindful movement and overall wellness.

**Contact: Boliver Choi, [boliverc@cisc-seattle.org](mailto:boliverc@cisc-seattle.org)**

### ESL instruction

Build confidence speaking English through supportive instruction focused on everyday vocabulary and conversation. Classes are taught in English with Cantonese or Mandarin support.

**Contact: Boliver Choi, [boliverc@cisc-seattle.org](mailto:boliverc@cisc-seattle.org)**

### Conversational English

Practice English for everyday situations such as shopping, banking, employment and health care in a small group setting that allows more individual attention and conversation practice.

**Contact: 206-530-9174 or [seniorcenter@cisc-seattle.org](mailto:seniorcenter@cisc-seattle.org)**

### Chinese musical instrument group

Play traditional Chinese music with fellow musicians in an informal weekly gathering. This is not an instructional class. Participants should bring their own instrument and be prepared to play with the group.

### Chorus

Enjoy singing together in a welcoming community choir open to all skill levels. Singing is a fun way to stay active and connect with others while sharing music.

### Information and assistance

Connect with public services and community resources through language support and personalized guidance. Staff help participants access services, complete applications and find resources that support daily needs.

**Contact: Karia Wong, [kariaw@cisc-seattle.org](mailto:kariaw@cisc-seattle.org)**

**Contact: Stephen Lam, [stephenl@cisc-seattle.org](mailto:stephenl@cisc-seattle.org)**

### SHIBA Medicare assistance

Receive free, confidential help understanding Medicare and other health insurance options through the Statewide Health Insurance Benefits Advisors program. Advisors can review coverage, answer questions and help with Medicare enrollment.

---

## Chinese Information & Service Center ( 華語資訊服務中心 , CISC )

### CISC 簡介

華語資訊服務中心為非營利組織，透過各項社區課程、教育服務與社會福利服務，協助 King 郡所有新移民及其家庭。

## 活動與服務

### 排舞

學習編排過的排舞動作，在維持身心活躍、與他人歡度時光的同時，還能提升平衡感、協調性與節奏感。

### 太極

練習溫和的動作，強化平衡感、柔軟度，並達到身心放鬆的效果，同時培養專注的動作意識，促進整體健康。

**聯繫人：Boliver Choi, [boliverc@cisc-seattle.org](mailto:boliverc@cisc-seattle.org)**

### ESL 課程

課程採鼓勵式教學，聚焦日常字彙與對話練習，協助學員建立英語口說的自信心。本課程以英語授課，並提供粵語或國語的隨堂輔助說明。

**聯繫人：Boliver Choi, [boliverc@cisc-seattle.org](mailto:boliverc@cisc-seattle.org)**

### 生活英語對話

採小班教學模式，針對購物、銀行辦事、求職、就醫等日常場景，練習英語表達；課堂中能獲得更多個人指導與對話練習的機會。

**聯繫方式：206-530-9174，或 [seniorcenter@cisc-seattle.org](mailto:seniorcenter@cisc-seattle.org)**

## 華樂團

每週以輕鬆的聚會形式，與同好一同演奏傳統華樂曲目。本團非教學性質，無提供相關教學。參與者請自行攜帶樂器，並備妥與團員合奏的準備。

## 合唱團

加入溫馨的社區合唱團，一同享受歌唱的樂趣；本團歡迎各程度的民眾參與，無需具備基礎。歌唱不僅能維持身心活躍、與他人交流互動，更是一同分享音樂的有趣方式。

## 諮詢與協助服務

透過語言協助與個人化諮詢引導，協助民眾連結各項公共服務與社區資源。工作人員會協助參與者申請各項服務、填寫各類表單，並協尋符合日常生活需求的相關資源。

**聯繫人：Karia Wong, kariaw@cisc-seattle.org**

**聯繫人：Stephen Lam, stephenl@cisc-seattle.org**

## SHIBA Medicare 諮詢服務

Statewide Health Insurance Benefits Advisors (州健康保險福利諮詢, SHIBA) 計畫免費提供保密的一對一諮詢，協助您瞭解 Medicare 與其他健康保險方案。專業諮詢人員可協助審視保險保障內容、解答各項相關問題，並協助辦理 Medicare 的加入手續。

## Eastside Legal Assistance Program (ELAP)

### About ELAP

Eastside Legal Assistance Program is a nonprofit organization that provides free civil legal aid and legal education to people in King County who cannot afford a lawyer.

### ELAP legal clinic

Get free legal guidance on elder law and probate matters through this monthly legal clinic. Volunteer attorneys help older adults understand their legal options and plan for important life decisions in a supportive, confidential setting.

### Appointments are required.

Call 425-747-7274 to schedule and confirm income eligibility. Individuals must qualify for no-charge services.

## Indian American Community Services (IACS)

### About IACS

Indian American Community Services is a nonprofit organization that connects and empowers the Indian American community through cultural programs, services and advocacy for people of all ages. The IACS group meets on Thursdays.

### IACS Community Program

Connect with others while celebrating Indian culture, wellness and community. Participants take part in activities such as health education, mindful breathing exercises, social gatherings and group discussions while building friendships across generations. A light lunch is provided.

**Contact: 206-805-8955, iacswa.org**

## Indian American Community Services

### (भारतीय- अमेरिकी सामुदायिक सेवाएं) (IACS)

#### IACS के बारे में

Indian American Community Services (भारतीय- अमेरिकी सामुदायिक सेवाएं) एक गैर-लाभकारी संगठन है, जो सांस्कृतिक कार्यक्रमों, विभिन्न सेवाओं और वकालत के माध्यम से हर उम्र के लोगों को जोड़कर भारतीय-अमेरिकी समुदाय को सशक्त बनाता है। IACS की बैठक गुरुवार को होती है।

#### IACS Community Program (IACS सामुदायिक कार्यक्रम )

दूसरों से जुड़ते हुए भारतीय संस्कृति, स्वास्थ्य और समुदाय का उत्सव मनाएं। प्रतभागी स्वास्थ्य शिक्षा, सजग श्वास अभ्यास, सामाजिक मलिन और समूह चर्चा जैसी गतिविधियों में भाग लेते हैं और साथ ही अलग-अलग पीढ़ियों के लोगों के साथ दोस्ती भी करते हैं। हल्का दोपहर का भोजन भी दिया जाता है।

**संपर्क: 206-805-8955, [iacswa.org](http://iacswa.org)**

## Sea Mar Community Health Centers

#### About Sea Mar

Sea Mar Community Health Centers is a community-based organization that provides health, social, educational and cultural services across Washington state, with a focus on serving Latino communities.

#### Sea Mar community program

Spanish-speaking older adults are invited to connect, learn and stay active through weekly gatherings that include wellness seminars, ESL classes, exercise sessions, social activities and shared meals. The program also encourages connection and conversation between Spanish- and English-speaking community members. The Latinx group meets on Fridays.

#### Sea Mar Gema chorus

Lift your voice and enjoy singing together in this welcoming choir for older adults who enjoy Spanish-language music. Participants build confidence, connect with others and celebrate culture through music. All skill levels are welcome.

## Centro de Salud Comunitario Sea Mar

#### Sobre Sea Mar

El Centro de Salud Comunitario Sea Mar es una organización comunitaria que ofrece servicios de salud, sociales, educativos y culturales en todo el estado de Washington, con especial atención a las comunidades latinas.

#### Programa comunitario de Sea Mar

Se invita a las personas mayores que hablan español a conectarse, aprender y mantenerse activas a través de encuentros semanales que incluyen seminarios de bienestar, clases de inglés como segundo idioma (ESL), sesiones de ejercicio, actividades sociales y comidas compartidas. El programa también fomenta la conexión y la conversación entre miembros de la comunidad que hablan español e inglés. Este grupo latino se reúne los viernes.

#### Coro Gema de Sea Mar

Alce su voz y disfrute cantar en conjunto en este coro acogedor para personas mayores que disfrutan de la música en español. Los participantes fortalecen su confianza, se conectan con otras personas y celebran la cultura a través de la música. Todos los niveles de experiencia son bienvenidos.

# Registration & Payment Policies



Effective March 31, 2025

Every effort is made to ensure that the information in this catalog is accurate at the time of publication. Because policies, personnel, and funding can change, Bellevue Parks & Community Services reserves the right to add or withdraw programs and to amend, revise, or modify any provision, including - but not limited to - price, date, and location, printed in this brochure. You are encouraged to visit [register.bellevuewa.gov](http://register.bellevuewa.gov) for the most up-to-date information.

For programs meeting fewer than 10 hours per week, please see "General Recreation Programs" policies. Day Camp policies on this page do not apply to camps meeting fewer than 10 hours per week.

## Food & Refreshments

Programs listed in this brochure may include a food or beverage refreshment. Please contact the Program Area site for more information; phone numbers are available in this brochure. Food and beverage cost, when applicable, is included in the cost of the program.

## City of Bellevue Tax ID Number:

91-6007020

## Registration Priority:

The City of Bellevue is committed to providing a wide range of recreation activities for Bellevue residents. Therefore, the City gives advance registration preference for those residing within the Bellevue city limits. Non-residents are welcome to take part in recreation programs on a space-available basis. Non-resident registrations are not accepted prior to the first day of non-resident registration. On this day, mailed registrations will be accepted, via phone at 425-452-6885, or online at [register.bellevuewa.gov](http://register.bellevuewa.gov).

Due to an interlocal agreement with King County, all registrations for programs at South Bellevue Community Center are processed in the order received.

## Registration Confirmation:

Registration receipts are mailed electronically after registration has been processed. Call 425-452-6885 to request a printed registration receipt.

## Financial Assistance/Scholarships:

Financial assistance is available to qualifying residents who live within the Bellevue City limits. Applicants will be notified of the amount due for each registration after financial assistance application is processed. Please call 425-452-6885 or visit [BellevueWA.gov/activity-guide](http://BellevueWA.gov/activity-guide) for information on applying for financial assistance.

## Payment:

Payment is accepted in cash, gift certificates, checks, or Visa/MasterCard only. Payment for all programs except day camps is due in full at the time of registration. Please do not mail cash.

*Financial assistance/Scholarship application is required prior to registration*

**General Recreation Programs:** Payment is due at the time of registration.

**Day Camps (camps meeting 10 hours or more per week):** Each Day Camp requires a \$50 non-refundable registration fee, per participant, per camp, at the time of registration, and will be applied toward the final amount due. Non-Bellevue resident fee differential is also due at the time of registration. Payment in full of the remaining balance is due thirty (30) calendar days prior to the first day of each session. The city of Bellevue will automatically charge a credit card/debit card on file for balances due for day camps on the payment due date and, if necessary, adjust or reverse a payment for any entry made to an account or credit card in error.

# Registration & Payment Policies



## Credit Card:

Include credit card number and expiration date on registration form.

## Checks:

All checks or drafts received by the city which are returned or dishonored by the drawee bank or other such depository shall be assessed a charge of \$15 (Administrative Order 53).

## Refunds:

Classes canceled by the city will result in a 100% refund of program fees. No refunds or credits will be issued on or after the first day of the program or camp. No refunds are available for programs \$10 or less.

**General Recreation Programs:** A refund is granted if the withdrawal is made at least seven (7) calendar days prior to the start of class, less a \$10 administrative fee per participant, per program.

Class withdrawals requested fewer than seven (7) calendar days prior to class will result in a refund of:

- Programs with fees \$20 or less: program fee, less \$10 administrative fee, per participant, per program.
- Programs with fees greater than \$20: 50% of the program fee, per participant, per program.

## Day Camps (camps meeting 10 hours or

**more per week):** A refund is granted if the withdrawal is made at least fourteen (14) calendar days prior to the first day of class, less a \$50 non-refundable registration fee, per participant, per camp. Camp withdrawals requested less than fourteen (14) calendar days prior to camp will result in a refund of 50% of the program fee, per participant, per program. If you are interested in transferring to a different camp, please call 425-452-6885 for information on our transfer policy.

## Resident Definition:

A resident is defined as anyone living within the jurisdictional boundary of the City of Bellevue as determined by City records. If you have any question as to whether you are within the jurisdictional boundary of the City of Bellevue, please contact the Development Services Department's Land Use Division at 425-452-4188.

The City of Bellevue prohibits sex discrimination in the operation or administration of community athletics programs for youth or adults. Third parties who receive leases or permits from the City of Bellevue for a community athletic program are also prohibited from discriminating on the basis of sex. In addition, the City of Bellevue does not discriminate on any other basis provided by Federal or State law. If you have questions or wish to file a complaint, contact Susan Freeburg at [sfreeburg@bellevuewa.gov](mailto:sfreeburg@bellevuewa.gov), or 425-452-4278.



# Financial Assistance Available for Recreation Programs

Bellevue Parks & Community Services strives to make program opportunities available to all interested individuals who live in the boundaries of the city of Bellevue, regardless of income. We provide scholarships to those who might not otherwise be able to participate. Visit one of the locations listed at the bottom of this page to obtain a copy of the scholarship application form, visit [bellevuewa.gov/connections](http://bellevuewa.gov/connections) to download a copy, or call 425-452-6885 and staff will be happy to mail you a copy of the form, free of charge.

贝尔维尤公园和社区服务中心致力于为居住在贝尔维尤市边界地区的所有对此计划感兴趣的人士提供机会，而不会考虑个人的收入情况。我们为可能无法参与的人士提供奖学金。您可前往本页面底部列出的其中任一地点，领取一份奖学金申请表副本，也可以浏览网站 [bellevuewa.gov/connections](http://bellevuewa.gov/connections) 下载一份副本，或致电 425-452-6885，工作人员将乐意给您免费邮寄申请表副本。

Bellevue 公園和社區服務致力於為居住在 Bellevue 市邊界的所有感興趣的個人提供計劃機會，無論收入為何。我們為那些可能無法參加的人提供獎學金。請瀏覽本頁下方列出的地點之一以索取獎學金申請表的副本，請瀏覽 [bellevuewa.gov/connections](http://bellevuewa.gov/connections) 下載副本，或致電 425-452-6885，工作人員將很樂意為您郵寄一份副本表格，無需額外費用。

Bellevue パーク&コミュニティサービスは、プログラムにご興味をお持ちのBellevue市民全員が収入の多寡によらずご利用いただけるよう努めています。参加が叶わない方には奨学金を支給しています。奨学金の申請用紙は、このページの下に記載の場所にて直接入手または [bellevuewa.gov/connections](http://bellevuewa.gov/connections) からダウンロード、あるいは 425-452-6885 にお電話いただければ、職員が無料で用紙を郵送させていただきます。

벨뷰 공원 및 근린시설 서비스는 소득 수준과 관계없이 프로그램에 관심이 있는 벨뷰시 거주 시민이라면 누구든지 프로그램을 이용할 기회를 제공 하고자 노력합니다. 참여가 어려운 사람에게는 장학금을 제공합니다. 이 페이지 하단에 열거된 지점 중 한 곳을 방문하거나 [bellevuewa.gov/connections](http://bellevuewa.gov/connections)를 방문하여 장학금 지원서 양식을 받을 수 있으며, 425-452-6885번으로 전화하면 직원이 지원서 양식을 무료로 발송해드립니다.

Bãi đỗ xe & Dịch vụ Cộng đồng Bellevue cố gắng tạo cơ hội tham gia chương trình cho tất cả những cá nhân quan tâm sống trong địa phận thành phố Bellevue, bất kể thu nhập. Chúng tôi cung cấp học bổng cho những cá nhân không thể tham gia. Truy cập một trong những địa điểm được liệt kê ở cuối trang này để lấy một bản sao của mẫu đơn đăng ký học bổng, truy cập [bellevuewa.gov/connections](http://bellevuewa.gov/connections) để tải xuống một bản sao, hoặc gọi 425-452-6885 và nhân viên luôn sẵn lòng gửi cho quý vị một bản sao của mẫu đơn qua đường bưu điện hoàn toàn miễn phí.

Служба парков и коммунальных предприятий Белвью предлагает программы создания возможностей всем заинтересованным лицам, которые живут в пределах города Белвью, независимо от их дохода. Мы предоставляем стипендии тем, кто без этого не сможет стать участником программы. Получить бланк заявки на стипендию можно в одном из офисов, перечисленных в нижней части этой страницы. Чтобы скачать бланк заявки, зайдите на страницу [bellevuewa.gov/connections](http://bellevuewa.gov/connections) или позвоните по номеру 425-452-6885, и сотрудники бесплатно отправят вам бланк по почте.

Parques y Servicios Comunitarios de Bellevue procura hacer que las oportunidades para participar en los programas estén disponibles a todos aquellos que estén interesados y vivan dentro de los límites de la ciudad de Bellevue, independientemente de sus ingresos. Otorgamos becas a los que no podrían participar de otra manera. Visite algunos de los locales listados al pie de esta página para obtener una copia del formulario de solicitud de becas, también puede ingresar a [bellevuewa.gov/connections](http://bellevuewa.gov/connections) y descargar el formulario o puede llamar al 425-452-6885 y el personal felizmente le enviará una copia por correo electrónico sin costo.

**Bellevue Aquatic Center** 601 143rd Ave NE  
**Bellevue Youth Theatre** 16501 NE 10th St  
**Crossroads Community Center** 16000 NE 10th St  
**Highland Community Center** 14224 Bel-Red Rd  
**Kelsey Creek Farm** 410 130th Pl SE  
**Crossroads Mini City Hall** 15600 NE 8th St #H9

**North Bellevue Community Center**  
 4063 148th Ave NE  
**Northwest Arts Center** 9825 NE 24th St  
**Robinswood Tennis Center** 2400 151st Pl SE  
**South Bellevue Community Center**  
 14509 SE Newport Way

## Program support for people with disabilities

Bellevue Parks & Community Services welcomes everyone into programs. If you have a disability, you can ask for support plans or changes to help you participate during registration online, by phone, by email or in person. For more information, call 425-452-6885 or email [parksweb@bellevuewa.gov](mailto:parksweb@bellevuewa.gov). Please make your request at least two weeks before your program starts.

### 殘障人士计划支持

Bellevue 公园和社区服务部欢迎所有人参与计划。如果您是残障人士，您在注册期间可以通过线上、电话、电子邮件或线下方式，要求提供支持方案或做出调整，以便您参与其中。如需了解更多信息，请致电 425-452-6885 或发送电子邮件至 [parksweb@bellevuewa.gov](mailto:parksweb@bellevuewa.gov) 请至少在您的计划开始前两周提出请求。

### 身心障礙人士活動支援

Bellevue 公園暨社區服務處歡迎所有人一同參與我們的活動。若您為身心障礙人士，可於線上、電話、電子郵件或親洽櫃檯報名時，提出您的需求，我們將提供協助方案或進行必要調整，幫助您順利參與。如需進一步資訊，請致電 425-452-6885，或發送電郵至 [parksweb@bellevuewa.gov](mailto:parksweb@bellevuewa.gov) 為確保服務到位，請最晚於活動開始前兩週提出申請。

### 障がいのある方へのプログラム支援

Bellevue市公園・コミュニティサービス部では、すべての方のご参加を歓迎しています。障がいのある方は、オンライン・電話・メールまたは窓口での登録時に、参加を支援するための計画や調整をお申し出いただけます。詳しくは、電話 425-452-6885 またはメール [parksweb@bellevuewa.gov](mailto:parksweb@bellevuewa.gov) までお問い合わせください。ご希望の場合は、プログラム開始の少なくとも2週間前までにお申し出ください。

### 장애인을 위한 프로그램 지원

Bellevue 파크 & 커뮤니티 서비스는 모든 사람을 프로그램에 초대합니다. 장애가 있는 경우 온라인, 전화, 이메일 또는 직접 등록 시 참여할 수 있도록 지원 계획이나 변경 사항을 요청할 수 있습니다. 자세한 정보를 원하시면, 425-452-6885 로 전화하시거나 이메일 [parksweb@bellevuewa.gov](mailto:parksweb@bellevuewa.gov) 로 연락해 주세요. 프로그램이 시작되기 최소 2주 전에 요청해 주시기 바랍니다.

### Chương trình hỗ trợ dành cho người khuyết tật

Sở Công Viên và Dịch Vụ Cộng Đồng Bellevue chào đón tất cả mọi người tham gia chương trình. Nếu là người khuyết tật, quý vị có thể yêu cầu các chương trình hỗ trợ hoặc thay đổi để giúp quý vị tham gia trong quá trình đăng ký trực tuyến, qua điện thoại, qua email hoặc trực tiếp. Để biết thêm thông tin, hãy gọi số 425-452-6885 hoặc gửi email đến địa chỉ [parksweb@bellevuewa.gov](mailto:parksweb@bellevuewa.gov). Vui lòng đưa ra yêu cầu ít nhất hai tuần trước khi chương trình của quý vị bắt đầu.

### Программная поддержка для людей с ограниченными возможностями

Служба парков и общественных служб Bellevue приветствует всех желающих принять участие в программах. Если у вас есть инвалидность, вы можете запросить планы поддержки или изменения, которые помогут вам принять участие — во время регистрации онлайн, по телефону, электронной почте или лично. Для получения дополнительной информации позвоните по телефону 425-452-6885 или напишите по адресу [parksweb@bellevuewa.gov](mailto:parksweb@bellevuewa.gov). Пожалуйста, подайте заявку не позднее, чем за две недели до начала программы.

### Programa de apoyo para personas con discapacidades

Los Parques y Servicios Comunitarios de Bellevue dan la bienvenida a todas las personas a sus programas. Si tiene una discapacidad, puede solicitar planes de apoyo o adaptaciones para ayudarlo a participar durante el proceso de inscripción, ya sea en línea, por teléfono, por correo electrónico o en persona. Para obtener más información, llame al 425-452-6885 o envíe un correo electrónico a [parksweb@bellevuewa.gov](mailto:parksweb@bellevuewa.gov). Haga su solicitud al menos dos semanas antes de que comience su programa.

**Bellevue Aquatic Center** 425-452-4444

**Bellevue Youth Theatre** 425-452-7155

**Crossroads Community Center** 425-452-4874

**Highland Community Center** 425-452-7686

**Kelsey Creek Farm** 425-452-7688

**North Bellevue Community Center** 425-452-7681

**Northwest Arts Center** 425-452-4106

**Robinswood Tennis Center** 425-452-7690

**South Bellevue Community Center** 425-452-4240

# Activity Registration Form



**Please Print Clearly**

Adult Last Name		First Name		Date of Birth	
Preferred Phone:		Phone Type:	Secondary Phone:		Phone Type:
Street Address					
City		State	Zip	Pronouns	
E-mail-address-providing your email address, you will receive emailed receipts and updates from Bellevue Parks & Community Services.					
Work Phone					
Home Phone					

**Check here if you need to be contacted by staff to request a modification for a participant with a disability.**

**Child #1 Name:** \_\_\_\_\_

Last		First		Date of Birth	Pronouns
Class No	Class Title		Fee	Use Scholarship?	

**Child #2 Name:** \_\_\_\_\_

Last		First		Date of Birth	Pronouns
Class No	Class Title		Fee	Use Scholarship?	

**Emergency Contact**

Contact Name \_\_\_\_\_ Relation \_\_\_\_\_

Phone Number \_\_\_\_\_ Email Address \_\_\_\_\_

**Payment Details** See Payment Policies for More Information.  

**Payment Method**  Check  D.D.A. (send to Highland)  Credit Card

Total Fee \$ \_\_\_\_\_ Card Number \_\_\_\_\_ CVV \_\_\_\_\_ Expiration date \_\_\_\_\_

**Waiver on reverse side of form must be signed prior to returning this form. Registrations received without a signed waiver will not be processed.**



# WAIVER OF LIABILITY/PHOTO & VIDEO RELEASE

## PLEASE READ CAREFULLY

In consideration of myself and/or my child(ren) being allowed to use City of Bellevue Parks & Community Services facilities and/or participate in the city-sponsored activity(ies) identified herein, I ASSUME ANY AND ALL RISKS, INCLUDING RISK OF INJURY OR DEATH, associated with my or my child(ren)'s use of said facilities and/or participation in said activities. I further agree on behalf of myself, my heirs, executors, assigns, and personal representatives, to waive and RELEASE any and all rights and claims for damages, including attorney fees, I now, or may hereafter have, whether known or unknown, against the City of Bellevue and its officials, employees, and agents for any injuries suffered by me or my child(ren) in connection with the use of city facilities or participation in the city-sponsored activity(ies) identified herein. I acknowledge that I have carefully read this WAIVER OF LIABILITY and fully understand that I am waiving any right that I may have to bring a legal action or to assert a claim against the City of Bellevue in connection with the use of city facilities or participation in the city-sponsored activity stated below.

**PHOTO/VIDEO RELEASE:** I give my permission to have photos and/or video and audio recordings taken of me or my child(ren) during City of Bellevue activities and authorize the City of Bellevue to copyright, use, and publish the same. I understand I am waiving any right of privacy, compensation, copyright or other ownership right connected to the photo or recording. If you do not give permission to have photos and/or video and audio taken of you or your child(ren), please contact the main office at 425-452-6885 or parksweb@bellevuewa.gov.

**I acknowledge that I have carefully read this WAIVER OF LIABILITY / RELEASE and fully understand that I am waiving any right that I may now or hereafter have to bring a legal action to assert any claim against the City of Bellevue in connection with my participation in this volunteer activity.**

By signing below, I accept the conditions printed above, and by further initialing where indicated below, I acknowledge that I have carefully reviewed and understand the Concussion Information Sheet and Sudden Cardiac Arrest Information Sheet accompanying this Waiver of Liability/ Release.

\_\_\_\_\_  
Participant and/or Parent/Guardian Signature

\_\_\_\_\_  
Date

\_\_\_\_\_  
Printed Name

**Registration NOT VALID without signed waiver.**

Mail completed form to: Bellevue Parks Registration; P.O. Box 90012; Bellevue, WA 98009-9012

# Summer 2026

## Adaptive Rec Registration Form Highland Community Center



Mailing Address: PO Box 90012 | Bellevue WA 98009

Phone: 425-452-7686 | Email: hcc@bellevuewa.gov

Participants Name:	Date of Birth:
--------------------	----------------

### POINT OF CONTACT INFORMATION:

Last Name	First Name	Date of Birth		
Primary Phone:	Phone Type:	Alternate Phone:	Phone Type:	
Street Address		City	State	Zip
E-mail Address				

**Registration Opens: May 26 (Bellevue Resident) and June 2 (Non-Bellevue Resident)**

### Intellectual Developmental Disability (IDD) Programs (No class July 3 and July 4)

- |  |   |   |   |
|--|---|---|---|
| <input type="checkbox"/> <b>Indoor Bocchia</b><br>Sat 10 a.m.-Noon | <b>\$64(R) \$77(NR)</b><br>July 11-Sep 5  | <input type="checkbox"/> <b>Movie Time</b><br>Wed 5-7 p.m.  | <b>\$53(R) \$64(NR)</b><br>July 1-Sep 2   |
| <input type="checkbox"/> <b>Hangout</b><br>Mon-Thu 3-5 p.m.        | <b>\$53(R) \$64(NR)</b><br>June 29-Sep 3  | <input type="checkbox"/> <b>BINGO</b><br>Wed 7-8 p.m.   | <b>\$53(R) \$64(NR)</b><br>July 1-Sep 2   |
| <input type="checkbox"/> <b>Summer Fitness</b><br>Mon 5-7 p.m.     | <b>\$64(R) \$87(NR)</b><br>June 29-Aug 31 | <input type="checkbox"/> <b>Aloha Picnic &amp; Dance</b><br>Fri 5-8:30 p.m.   | <b>\$10(R) \$12(NR)</b><br>Aug 14         |
| <input type="checkbox"/> <b>Social Club</b><br>Mon 7-8 p.m.        | <b>\$53(R) \$64(NR)</b><br>June 29-Aug 31 | Will any family members or caregivers be joining you? No, just me! <input type="checkbox"/> Yes! 1 <input type="checkbox"/> 2 <input type="checkbox"/> 3 <input type="checkbox"/> |   |
| <input type="checkbox"/> <b>Fitness</b><br>Tue/Thu 5-6:30 p.m.     | <b>\$94(R) \$113(NR)</b><br>June 30-Sep 3 | <input type="checkbox"/> <b>Virtual Trivia</b><br>Mon 7-8 p.m.  | <b>\$53(R) \$64(NR)</b><br>June 29-Aug 31 |
| <input type="checkbox"/> <b>Softball</b><br>Tue/Thu 6:30-8 p.m.    | <b>\$76(R) \$91(NR)</b><br>June 30-Sep 3  | <input type="checkbox"/> <b>Virtual BINGO</b><br>Wed 7-8 p.m.   | <b>\$53(R) \$64(NR)</b><br>July 1-Sep 2   |

### Physical Disability 9PD) Programs

- |   |   |   |   |
|---|---|---|---|
| <input type="checkbox"/> <b>PD Exercise</b><br>Tue & Thu 11 a.m.-Noon | <b>\$110(R) \$132(NR)</b><br>June 30-Sep 17 | <input type="checkbox"/> <b>PD Exercise</b><br>Tue & Thu Noon-1:30 p.m. | <b>\$110(R) \$132(NR)</b><br>June 30-Sep 17 |
|---|---|---|---|

# WAIVER OF LIABILITY/PHOTO & VIDEO RELEASE

## PLEASE READ CAREFULLY

In consideration of myself and/or my child(ren) being allowed to use City of Bellevue Parks & Community Services facilities and/or participate in the city-sponsored activity(ies) identified herein, **I ASSUME ANY AND ALL RISKS, INCLUDING RISK OF INJURY OR DEATH**, associated with my or my child(ren)'s use of said facilities and/or participation in said activities. I further agree on behalf of myself, my heirs, executors, assigns, and personal representatives, to waive and **RELEASE** any and all rights and claims for damages, including attorney fees, I now, or may hereafter have, whether known or unknown, against the City of Bellevue and its officials, employees, and agents for any injuries suffered by me or my child(ren) in connection with the use of city facilities or participation in the city-sponsored activity(ies) identified herein. I acknowledge that I have carefully read this **WAIVER OF LIABILITY** and fully understand that I am waiving any right that I may have to bring a legal action or to assert a claim against the City of Bellevue in connection with the use of city facilities or participation in the city-sponsored activity stated below.

**PHOTO/VIDEO RELEASE:** I give my permission to have photos and/or video and audio recordings taken of me or my child(ren) during City of Bellevue activities and authorize the City of Bellevue to copyright, use, and publish the same. I understand I am waiving any right of privacy, compensation, copyright or other ownership right connected to the photo or recording. If you do not give permission to have photos and/or video and audio taken of you or your child(ren), please contact the main office at 425-452-6885 or parksweb@bellevuewa.gov.

**I acknowledge that I have carefully read this WAIVER OF LIABILITY / RELEASE and fully understand that I am waiving any right that I may now or hereafter have to bring a legal action to assert any claim against the City of Bellevue in connection with my participation in this volunteer activity.**

By signing below, I accept the conditions printed above, and by further initialing where indicated below, I acknowledge that I have carefully reviewed and understand the Concussion Information Sheet and Sudden Cardiac Arrest Information Sheet accompanying this Waiver of Liability / Release

\_\_\_\_\_  
Parent/Guardian Signature

\_\_\_\_\_  
Date

\_\_\_\_\_  
Printed Name

### Registration NOT VALID without signed waiver.

\_\_\_\_\_ I acknowledge that I have carefully reviewed and understand the Concussion  
Initial Information Sheet.


\_\_\_\_\_ I acknowledge that I have carefully reviewed and understand the Sudden Cardiac  
Initial Arrest Information Sheet .

## Payment Details See Payment Policies for More Information.



**Payment Method**  Check  D.D.A. (send to Highland)  Credit Card

Total Fee \$ \_\_\_\_\_ Card Number \_\_\_\_\_ CVV \_\_\_\_\_ Expiration date \_\_\_\_\_



# THE JUNGLE BOOK

## at Bellevue Youth Theatre

Step into the heart of the jungle as Bellevue Youth Theatre brings Rudyard Kipling's classic tale to life this summer. Bursting with adventure, music and humor, this family-friendly production celebrates friendship, courage and finding where you belong. Suitable for all ages, this lively performance is a theatrical journey you will not want to miss.

### Performance schedule

Fridays, July 31, Aug. 7, 14 at 7 p.m.

Saturdays, Aug. 1, 8, 15 at 2 p.m. and 7 p.m.

Sundays, Aug. 2, 9, 16 at 2 p.m.

### Tickets

\$13 per ticket

\$8 for live streaming access

Purchase tickets online at [register.bellevuewa.gov](https://register.bellevuewa.gov) or by phone at 425-452-7155.



## Parks Facilities

Facility Name	Address	Phone Number
Bellevue Aquatic Center	601 143rd Ave. NE	425-452-4444
Bellevue Botanical Garden	12001 Main St.	425-452-2750
Bellevue Golf Course	5500 140th Ave. NE	425-452-7250
Bellevue Indoor Skate Park	14224 Bel-Red Rd.	425-452-2722
Bellevue Youth Theatre	16051 NE 10th St.	425-452-7155
Crossroads Community Center	16000 NE 10th St.	425-452-4874
Crossroads Golf Course	5500 140th Ave. NE	425-452-7250
Highland Community Center (Adaptive recreation for individuals with disabilities & general programs)	14224 NE Bel-Red Rd.	425-452-7686
Kelsey Creek Farm	410 130th Pl. SE	425-452-7688
Lake Hills Greenbelt Ranger Station	15416 SE 16th St.	425-452-7225
Lewis Creek Visitor Center	5808 Lakemont Blvd. SE	425-452-4195
Mercer Slough Environmental Education Center	1625 118th Ave. SE	425-452-2565
North Bellevue Community Center	4063 148th Ave. NE	425-452-7681
Northwest Arts Center	9825 NE 24th St.	425-452-4106
Parks & Community Services Administration	450 110th Ave. NE	425-452-6885
Robinswood House	2430 148th Ave. SE	425-865-0795
Robinswood Tennis Center	2400 151st Pl. SE	425-452-7690
South Bellevue Community Center	14509 SE Newport Way	425-452-4240



For alternate formats, interpreters, or reasonable modification requests please phone at least 48 hours in advance 425-452-6885 (voice) or email [parkswb@bellevuewa.gov](mailto:parkswb@bellevuewa.gov). For complaints regarding modifications, contact the City of Bellevue ADA, Title VI, and Equal Opportunity Officer at [ADATitleVI@bellevuewa.gov](mailto:ADATitleVI@bellevuewa.gov).

