



Neighborhood News



June 2025



Play for all at Highland Community Center's new inclusive playground!

At the heart of Bellevue's mission to foster inclusive and welcoming spaces, the Highland Community Center has unveiled a new universally accessible playground for play, connection and discovery.

Since the 1970s, Highland has served as a hub for youth and adults with intellectual, developmental and physical disabilities. The new inclusive playground is another step to promote socialization, physical activity, and joy for the entire community.



For alternate formats, interpreters, or reasonable modification requests please phone at least 48 hours in advance 425-452-2735 (voice) or email mheilman@bellevuewa.gov. For complaints regarding modifications, contact the City of Bellevue ADA, Title VI, and Equal Opportunity Officer at ADATitleVI@bellevuewa.gov.

Subscribe to
Neighborhood News electronically:
BellevueWA.gov/neighborhood-news

Led by a Parks & Community Services project manager and Highland Center employee, the staff envisioned a dynamic space offering a range of experiences from high-energy play to quiet, sensory-rich exploration. With tactile elements and active climbing structures, the playground invites children and adults alike to play in ways that feel right for them.

Guided by the belief that equitable access is fundamental to the mission of serving all people, Bellevue's Parks & Community Services Department focuses on inclusive design to increase access in parks and playgrounds.

Now open to the public, the playground is a testament to what's possible when a community comes together with purpose. It's a space where neighbors meet, friendships form, and all abilities are celebrated.

Celebrate Pride on the Plaza on June 4



In honor of Pride Month, the City of Bellevue and Pride Across the Bridge are joining together to host Pride on the Plaza (BellevueWA.gov/pride-plaza), an event celebrating our LGBTQIA+ community that will feature music, food and theatrical drag performances highlighting the talents of queer artists in the community.

Community members are encouraged to attend the free event at City Hall on Wednesday, June 4, noon–2 p.m.

More info at BellevueWA.gov/pride-plaza.





Bridle Trails Projects Open House scheduled for June 11

Join city staff and your neighbors for a public open house on Wednesday, June 11 at the North Bellevue Community Center, 4063 148th Ave NE, 6:30 – 8 p.m. to review the 14 small capital projects that will be included on the NEP ballot and eligible for funding from the \$445k Bridle Trails NEP budget allocation. A brief overview of the project scoping and NEP voting processes will also be provided.

Let us know that you plan to attend!
neighborhoodoutreach@bellevuewa.gov

Project Review Phase for Northwest Bellevue NEP

The project submission phase for the Northwest Bellevue NEP closed on April 30. City staff are now in the scoping and review phase of the over 80 project ideas that were submitted for your neighborhood area and will present projects eligible for funding from the \$380k Northwest Bellevue NEP budget allocation at a Sept. 18 open house at the Northwest Arts Center.

The Neighborhood Enhancement Program is a city-funded program that allows residents to propose and select modest, capital projects to enhance their neighborhoods. The program

rotates through the city's 14 NEP neighborhood areas over the course of seven years, serving two areas each year. The \$7 million program allocation is distributed among each of the NEP neighborhood areas, according to the number of households in each area.

Questions? Contact Theresa Cuthill at tcuthill@bellevuewa.gov. Detailed program information can be found at BellevueWA.gov/nep

Great Neighborhoods Crossroads and Newport – Draft plans headed to Planning Commission

Brooke Brod, Community Engagement Lead

Since launching in October 2024, the Great Neighborhoods planning team has heard from hundreds of residents in both Crossroads and Newport about the future of their neighborhoods. The focus of this planning effort has centered on improving connectivity and opportunities to gather, as well as enhancing public spaces and access to parks, nature, and other amenities.

While Crossroads residents value its convenience and diversity, Newport residents value access to trails and the friendliness of their neighborhood. Both neighborhoods expressed a desire for enhanced opportunities for biking and walking and places to gather. All this feedback was used to create draft policy recommendations that the community was able to review and respond to in May.

Now it's time for these plans to move to the legislative process where they will be reviewed by Planning Commission before they hold a public hearing and make their recommendation.

Community members are encouraged to be part of the process and there are several opportunities to participate.

1. **Read the full draft plans.** The Crossroads neighborhood area plan can be found on the city's Engaging Bellevue website at Great Neighborhoods – Crossroads (engagingbellevue.com/great-neighborhoods-crossroads) and the Newport neighborhood area plan can be found at Great Neighborhoods –

Newport (engagingbellevue.com/great-neighborhoods-newport).

2. **Attend a Community Info Session.** The planning team will host a joint information session to share the draft neighborhood area plans and answer questions on **Monday, June 2, 6:30 – 8 p.m.** This will be a hybrid meeting with an opportunity to attend virtually or in-person at City Hall. More information can be found at BellevueWA.gov/events/great-neighborhoods-draft-plan-release-info-session.
3. **Provide comments at the Planning Commission Study Session.** Community members are encouraged to provide feedback on the draft plans directly to Planning Commission at their study session on **Wednesday, June 11, 6:30 p.m.** Comments can be submitted in writing or provided at the start of the meeting, either in-person or virtually. For more information on how to participate in a Planning Commission meeting visit. BellevueWA.gov/planning-commission.

Annual Lake-to-Lake Bike Ride

Bellevue's Parks & Community Services department is hosting its annual Lake-to-Lake Bike Ride on Saturday, June 14. Come and explore the city's hidden treasures and award-winning parks!



This recreational bike ride offers low entry fees and is open to all levels and abilities. Participants can choose from two route options to traverse much of the city. Pre-register at register.bellevuewa.gov/



Jubilee in the Community: Yardwork help for seniors and others in need

The program is accepting applications through Monday, June 30!

With Jubilee in the Community and Jubilee REACH, the City of Bellevue provides outreach to Bellevue homeowners in need and coordinates a team of volunteers each year to help homeowners with yard maintenance or outside home improvement needs.

To qualify, you must own and occupy your home in Bellevue. The program is designed for seniors, long-time residents, people on fixed incomes and anyone with limited help. While this program is free to Bellevue residents, some projects require homeowners to assist with minimal material costs.

All applicants will be contacted by telephone from a representative of Jubilee REACH and a selection panel will determine which applicants qualify for assistance.



Apply online (BellevueWA.gov/city-government/departments/community-development/neighborhoods/building-community/jubilee-community) or contact Sarina Miller (425-452-4295 or samiller@bellevuewa.gov).





Take precautions for wildfire season!

To learn more, join us at one of our upcoming wildfire preparedness workshops: June 9 at Newport Way Library and June 21 at Lewis Creek Park.



Wildfire season is just around the corner. And while we often think of wildfire as a rural threat, many of our urban neighborhoods, especially those near parks, greenbelts and open spaces, can be at serious risk. One of the most effective ways to protect our homes is to create defensible space around them.

Defensible space is the buffer you create between your home and anything that could catch fire, like dry grass, leaves or shrubs. Start by clearing dead vegetation from around our homes, fences and decks. Trim tree branches so they stay at least 10 feet away from rooftops and chimneys and limb them at least six feet from the ground. Keep lawns mowed and clear out any vegetation that could act as kindling.

In shared green spaces, work together with your neighbors or homeowners' association to help keep them maintained. Encourage fire-resistant plants, many of which are native and remove debris from gutters and rooftops regularly.

Urban wildfire risk is a shared concern, and when every household does its part, the entire neighborhood is better protected.



Bellevue Essentials

Bellevue Essentials is receiving applications for the 2025 cohort!

This unique civic engagement course offers a behind-the-scenes look at city government, giving residents in Bellevue the chance to learn, connect and get involved.

Applications are now open for the fall 2025 series, with classes Sept. 10-Nov. 12.

The course includes eight Wednesday evening sessions from 5:30–8:30 p.m., as well as one Tuesday evening and one Saturday afternoon session that takes participants into Bellevue's neighborhoods and parks.

Through interactive learning and real-world scenarios, class members gain a deeper understanding of the challenges and opportunities that shape life in Bellevue.

Over 400 people have completed the program since it began in 2013, and they represent every neighborhood, background and walk of life. Many alumni now serve by making meaningful contributions to their community.

Graduates grow their community networks and gain the tools to make a difference in Bellevue's future. The program emphasizes inclusivity and each year's cohort is selected to reflect Bellevue's rich diversity and neighborhoods.

Tuition is \$150, with fee waivers available.



**Applications are due by Wednesday,
July 23 at 5 p.m.**

Apply online or learn more
at: BellevueWA.gov/bellevue-essentials

For questions or accommodations,
contact Sarina Miller at 425-452-4295
or samiller@bellevuewa.gov.

Startup425 Accelerator celebrates graduation and demo day

Startup425 (startup425.org/)— a collaborative effort administered by the City of Bellevue to expand entrepreneurship throughout Eastside communities — celebrated the graduation of its second accelerator cohort in early June. The 15-week program provides much-needed support to burgeoning entrepreneurs navigating the venture-scale and small business startup process.

“Through this program, entrepreneurs can gain the basic knowledge needed to launch their businesses,” said Startup425 coordinator Levi Velez Reed. “Once again, we saw high interest in the accelerator, with more than 110 applicants for the 40 available spots. We also had support from more than 50 mentors who volunteered to share their expertise with the entrepreneurs.”

On June 2, the accelerator will hold a graduation ceremony at Bellevue City Hall and demo day presentation at Redmond Senior Community Center, which featured new businesses from all six of Startup425’s partner cities. Graduates are now looking forward to applying their newly acquired knowledge to their real-world future business endeavors, with five new businesses presenting their respective companies during the graduation event.

“I came in with an idea; I’m leaving with a business,” said accelerator participant Zachary Ramirez, founder of SavorySuite. “This program reminded me how powerful local support can be for early-stage founders. Startup425 bridges the gap between great ideas and real-world traction—and I’m grateful to have been part of it.”



Protecting older adults from cyber and financial crimes

In recent years, there has been an increase in cyber-crimes and financial exploitation targeting older adults. This includes stealing or defrauding older adults of their savings, property, identity, and other assets. Unfortunately, many older adults are particularly vulnerable to such crimes due to isolation, cognitive decline and lack of cyber-awareness. Scammers often exploit these vulnerabilities, tricking older adults into giving away large sums of money through fraudulent schemes. Common financial crimes include lottery scams, fake charities, home repair scams, phishing, and deceptive “investment opportunities.”

Older adults who may be less familiar with digital technology, are prime targets for online fraud. Cyber criminals often use email, social media or phone calls to pose as legitimate organizations, such as banks, government agencies or tech companies, to trick older victims into revealing personal information or make financial transfers. These online scams can be devastating, leaving victims financially ruined and emotionally distressed.

By shining a light on these crimes, we can foster a collective effort to prevent them. In raising awareness, we can encourage family members, caregivers and community members to assist older adults in recognizing the signs of this exploitation and learning how to take the necessary steps to prevent it. It’s crucial for older adults to stay informed about potential risks and for caregivers to monitor their financial well-being, both online and offline.

The Bellevue Police Department recommends taking steps to protect our identity, financial data

Continued from previous page

and private information from scammers, hackers and online predators.

Trusted adults should ensure that vulnerable older people follow these steps as well:

- Use strong passwords
- Update your software regularly
- Think before you click
- Turn on multifactor authentication.

More details on these cyber safety tips can be found here: BellevueWA.gov/city-government/departments/ITD/civic-technology/tips-keep-yourself-cyber-safe

To report a cybercrime or financial exploitation, you can reach the Bellevue Police Department at this number: 425-577-5656. The Bellevue Police Department has resources to assist with internet safety, scam prevention and identity theft.

By working together, we can ensure that older adults live with dignity, respect and security, free from the fear of exploitation.



Learn how to stay cool and save money with a heat pump!

Join your neighbors on June 9 for a virtual workshop to learn about the benefits of heat pumps, different heat pump configurations, how to shop for a heat pump and how to take advantage of rebates and incentives.

Attendees will have access to a special contractor discount for Eastside residents.

Learn more and sign up at energysmarteastside.org/events.

As Bellevue community members are getting ready for summer trips and recreational opportunities, many may also be preparing for hot weather and periods of smoky skies and poor air quality.

Energy Smart Eastside, Bellevue's home electrification program, is excited to help community members learn how they can save money and stay cool this summer with a heat pump. Heat pumps aren't just the most energy efficient way to heat your home in winter! They also provide air conditioning and filtration, keeping your home comfortable and healthy all summer.

And Energy Smart Eastside has special rebates that save Eastside residents thousands of dollars when they switch to heat pumps.

Flip for Sunny Side Up-Cycling classes with Bellevue Utilities

Join Bellevue Utilities to upcycle items you have for new purposes!

Our summer Greener Living Classes will give you tips, guides and resources on how to repurpose items you have to save you money and to keep them out of the landfill.

Registration is required and additional information can be found at BellevueWA.gov/greener-living-classes

King County Repair Fair

June 25, 3-6 p.m. at Bellevue Downtown Library

At this King County free community repair event at the Bellevue Library, our skilled volunteer "fixers" will try to repair and mend household items and clothing!

First-come, first-served (for people's first items only), as fixers are available. If people bring second items, we'll try to get to those after we've worked on everyone's first items.

If you have questions about the item you plan to bring, or any other questions, contact event coordinator Tom at tom.watson@kingcounty.gov, at 206-477-4481, or visit kingcounty.gov/ecoconsumer



Upcoming Red Cedar Trailhead closure

The Red Cedar Trailhead is anticipated being closed for approximately three years beginning as early as this summer for upgrades to the Coal Creek sewer system to accommodate growth in Bellevue and Newcastle.

Coal Creek Natural Area trail users can expect the following impacts over the next three years:

- Trailhead detour: Trail users will be detoured to the Forest Drive Trailhead to access the Natural Area while the Red Cedar Trailhead is closed.
- Noise: Typical construction noise may be expected near work areas.
- Traffic: Trucks will use turn lanes on Coal Creek Parkway SE.

King County will host an information booth and offer walking tours on June 6 and 7, 8:30 a.m. - 12:30 p.m. at the Red Cedar Trailhead located on Coal Creek Parkway between Forest Drive SE and SE 60th St.

For more information, visit [Kingcounty.gov/CoalCreekSewer](https://kingcounty.gov/CoalCreekSewer) or contact Frances Kuo, King County Wastewater Treatment Division Community Services, at 206-263-9237 or CoalCreekProject@kingcounty.gov

Bellevue will test new technologies to make crosswalks safer

Over half of the traffic crashes that occur in Bellevue involve a vulnerable road user – people on our roads and sidewalks who don't have the protection of a vehicle to keep them safe. This includes people walking, biking, and using mobility aids like wheelchairs or micromobility devices like e-scooters.

The City of Bellevue Transportation Department has received federal funding to pilot the "Safer Signals" project to improve intersection safety for all road users whether or not they are traveling in a vehicle.

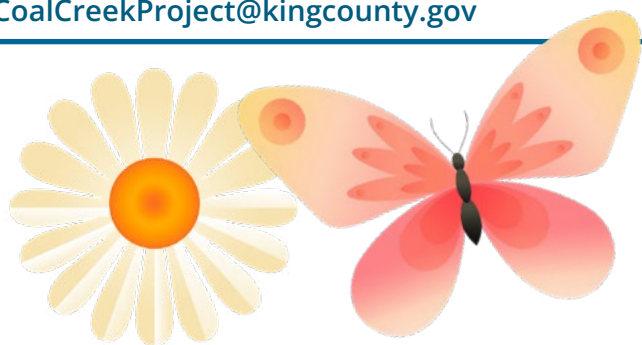
The city will test traffic signal technology that uses video analytics and intelligent sensors to detect people walking, biking and rolling in the crosswalk, along with artificial intelligence in the traffic cabinet to analyze their movements in real-time. For example, if a sensor detects that someone needs more time to cross or that there are many people in the crosswalk, it can extend the WALK cycle to allow them to safely cross.

Changes to the signals will happen automatically and do not require crosswalk users to press a button. The average "WALK" time extension is only 3 seconds, barely longer than a sneeze, and it will only happen when someone needs more time to cross.

Bellevue will test sensor technology at four signalized intersections in the Crossroads neighborhood and one in the Factoria neighborhood from July through September 2025. The pilot locations prioritize areas in Bellevue where many people walk, roll or bike – particularly near schools, parks, shops and transit lines.

The city will test if the technology can successfully help avoid crashes or close call incidents involving vehicles and vulnerable road users. Results from the pilot will inform the city's application for a second phase of funding to expand the technology throughout Bellevue as well as other cities throughout the region and other states.

To learn more, visit BellevueWA.gov/safer-signals



Continued on next page

Get prepared for hotter weather

We may have had a cooler, rainier May, but warmer weather is on its way! It's never too early to prepare for the potential of extreme heat. The National Oceanic and Atmospheric Administration (NOAA) has some recommendations for ways to plan now, plus what to do a few days before and during extreme heat events.

The City of Bellevue's Office of Emergency Management also prepares for other hazards, disasters and emergencies. We have resources and trainings that are available to the community, as well as opportunities to volunteer.

Visit BellevueWA.gov/emergency-management for more information.

Ride Transit Month

June is Ride Transit Month, a celebration of transit as a convenient, sustainable, and stress-free way to get around! Join the Choose Your Way Bellevue Transit Challenge to earn BIG rewards! Read more and sign up on our blog: bit.ly/ridetransitblog



Extreme Heat Planning Timeline

Pre-Season

Start planning before hot weather arrives.

- ✓ Build an emergency kit
- ✓ Make a plan for power outages
- ✓ Become trained in first aid for heat-related emergencies
- ✓ Check that your A/C and fans are in working order

A Few Days Out

If the forecast calls for extreme heat, be ready.

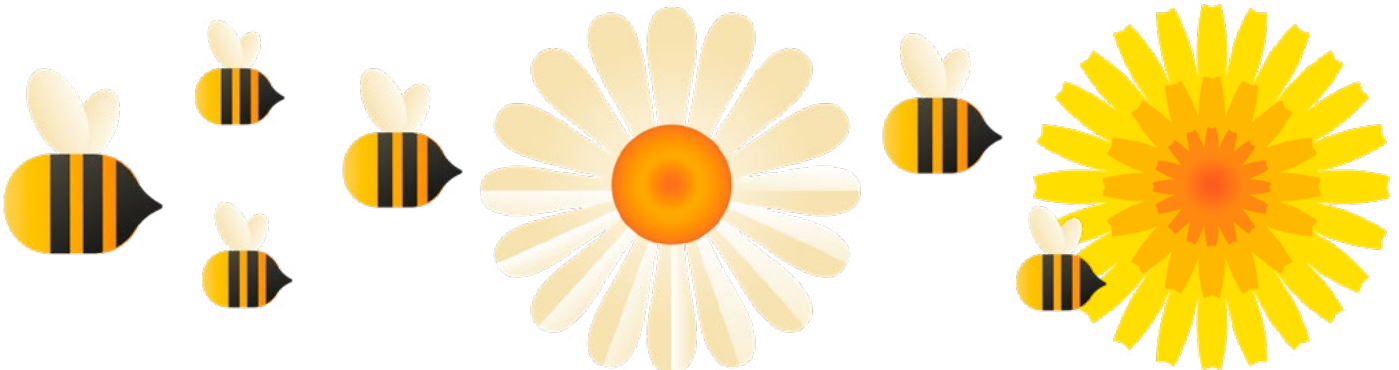
- ✓ Gather food, water, and medication
- ✓ Make a list of friends and family to check on & help them prepare
- ✓ Know your local cooling shelters or other cool locations
- ✓ Reschedule outdoor events

During and After

Remain vigilant and stay informed.

- ✓ Stay in air conditioning and out of the sun if possible
- ✓ Check on friends, family, neighbors, and pets
- ✓ Drink plenty of water
- ✓ Take breaks and use a buddy system if working outdoors

weather.gov



Earth Day celebrated by Keep Bellevue Beautiful volunteers!



BellevueWA.gov/KeepBellevueBeautiful



Boards and Commissions Meetings

Stay updated on meetings and cancellations:
BellevueWA.gov

All meetings are conducted at City Hall unless otherwise noted. Agendas are subject to change. If a holiday occurs on a Monday, please check the updated calendar. Agendas can be downloaded from the city's web pages listed below. Meeting alerts are available through subscribing to the City's Special Meeting Notices page.
BellevueWA.gov/special-meetings

Bellevue Diversity Advisory Network
 (6 p.m., Bellevue City Hall) Last Tuesday of each month
BellevueWA.gov/city-government/bdan

Arts Commission (4:30 p.m., 1E-113)
 First Wednesday of each month
BellevueWA.gov/arts-commission

Environmental Services Commission
 (6:30 p.m., 1E-113) First Thursday of each month
BellevueWA.gov/environmental-commission

Planning Commission (6:30 p.m., 1E-113)
 Second and fourth Wednesday of each month
BellevueWA.gov/cdplanning-commission

Transportation Commission (6:30 p.m., 1E-113)
 Second Thursday of each month with fourth Thursday as needed.
BellevueWA.gov/planning/transportation-commission

Human Services Commission (6 p.m., 1E-113)
 First and third Monday of each month
BellevueWA.gov/human-services-commission

LEOFF 1 Disability Board (6 p.m., Room 1E-118)
 First Wednesday of each month
BellevueWA.gov/leoff-1-disability-board

Parks & Community Services Board
 (6 p.m., 1E-113) Third Wednesday of each month
BellevueWA.gov/pcs-services-board

The Bellevue Network on Aging (BNOA)
 8:30 a.m., North Bellevue Community Center
 4063 148th Ave NE, Bellevue) First Thursday of each month
BellevueWA.gov/bnoa

Special Events Committee (8:30 a.m., 1E-112)
 Second Thursday of each month
BellevueWA.gov/events

Youth Link Board (6 p.m., 1E-120) Second and fourth Wednesday of each month
BellevueWA.gov/youth-link-board

Bellevue's Neighborhood Services Division offers a variety of programs and partnerships for residents and community members.

To learn more about involvement opportunities and programs to enhance neighborhoods, please visit our website at: BellevueWA.gov/neighborhoods or call 425-452-6836 or email: neighborhoodoutreach@bellevuewa.gov.

To subscribe to this newsletter, visit:
BellevueWA.gov/neighborhood-news

City Council Bellevue.Legistar.com/Calendar.aspx



| Day | Scheduled Meeting(s) | Location | Public Comment Opportunity |
|---|---------------------------|---|--|
| First four Tuesdays of each Month, except August and December | 6 p.m. Regular Meeting | Council Chamber Bellevue TV channel 21 and BT YouTube channel youtube.com/user/BellevueWashington | Emails to Council are accepted at council@bellevuewa.gov at any time. Further opportunities for public comment are published on each Council agenda and can be found at bellevue.legistar.com/calendar.aspx |
| August – first Tuesday only | | | |
| December – first and second Tuesday only | | | |