

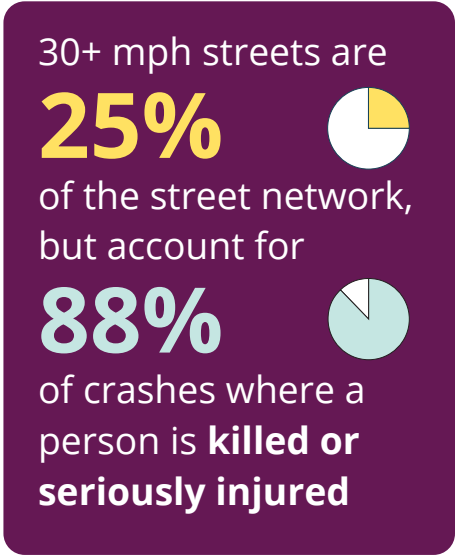


Safe Speeds Bellevue

The City of Bellevue is starting a new program called Safe Speeds Bellevue to review the speed limits on streets across the city. The goal of this program is to improve safety on our streets. It will also support Bellevue’s Vision Zero initiative, which aims to eliminate traffic deaths and serious-injury collisions on city streets by 2030.

We’re currently reviewing all city streets that have a speed limit of 30 miles per hour or more and determining safe speed limits. We’re starting here because while 30+ mph streets are only 25% of Bellevue’s street network, they account for 88% of crashes where a person is killed seriously injured. Safe speed limits will be determined based on how the street is designed and how it’s used by people walking, rolling, bicycling and driving.

Lower speed limits help keep everyone safe by reducing braking distance and improving the ability for people driving to recognize and avoid potential conflicts. This means crashes are less likely to happen. If crashes do happen, lower speeds mean they are less likely to result in someone dying or being seriously injured.



Learn more about the project, submit questions and discover outreach opportunities at BellevueWA.gov/safe-speeds.

DRIVING SPEED	20MPH	30MPH	40MPH
BRAKING DISTANCE	115' 	200' 	305'
RISK TO PEDESTRIANS HIT AT THIS SPEED	13% Likelihood of Fatality or Severe Injury 	40% Likelihood of Fatality or Severe Injury 	73% Likelihood of Fatality or Severe Injury

(Source: NHTSA)





Safe Speeds Bellevue

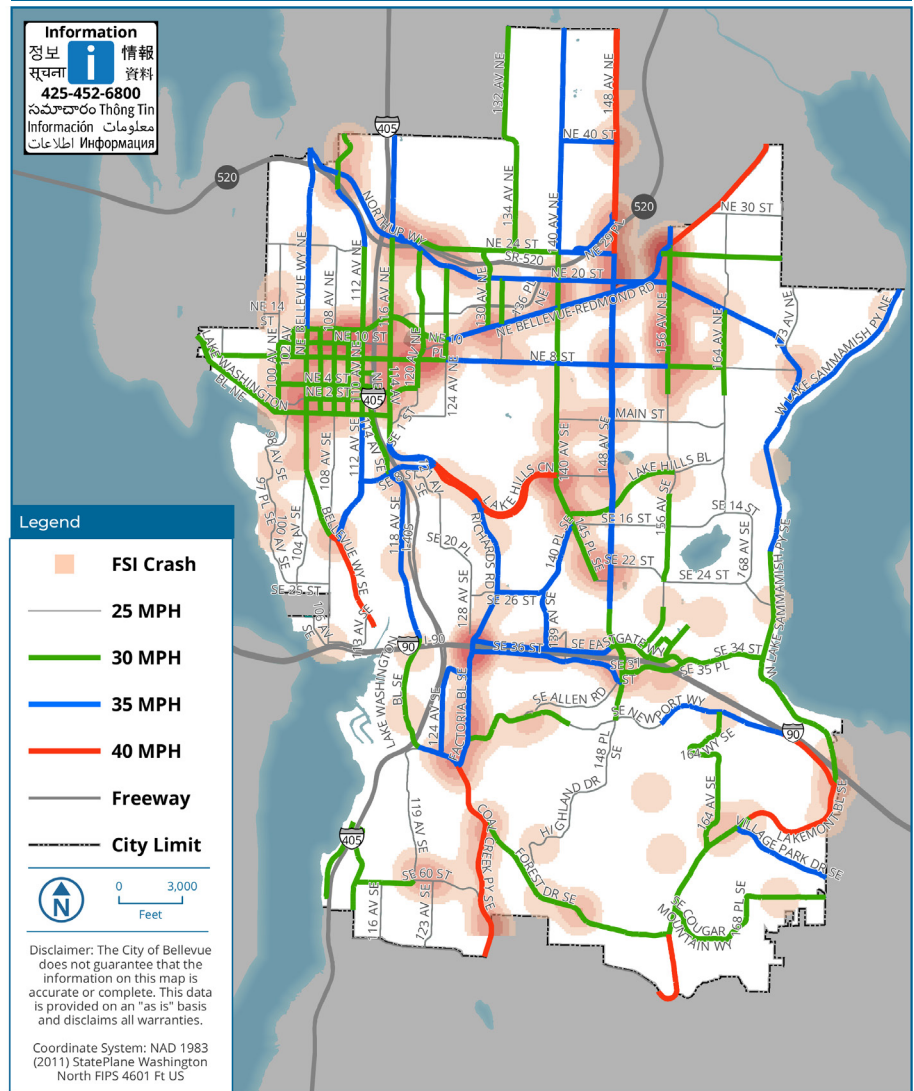
Lower speeds make streets safer

In Seattle, reducing speed limits and increasing the number of speed limit signs resulted in a 22% decrease in all crashes, an 18% decrease in injury crashes, and a 54% decrease in high-end speeding.

In Bellevue, reducing local street speed limits in the Eastgate neighborhood from 25 mph to 20 mph led to a 19% decrease in people driving 30 mph or more.

Map to right:
Bellevue streets with a current speed limit of 30 mph or more, overlaid with crashes where someone was killed or seriously injured (KSI) from 2015-2024.

Fatal and Serious Injury (FSI) Crashes in Bellevue (2015-2024)



Date: 5/19/2025 File Name: V:\TransDeptGIS\Wcrg\GIS\Planning\Safespeeds\KSI_2015_2024_SimplifiedMap.mxd

Information
정보 i 情報
सूचना 資料
425-452-6800
సమాచారం Thong Tin
Información معلومات
اطلاعات Информация

The City of Bellevue assures that no person shall on the grounds of race, color, or national origin (including limited English proficiency), as provided by Title VI of the Civil Rights Act of 1964 and related statutes, be excluded from participation in, be denied the benefits of, or be otherwise discriminated against under any City of Bellevue program or activity. Any person who believes their Title VI protection has been violated may file a complaint with the City of Bellevue's Human Resources Director. For additional information regarding Title VI complaint procedures and/or information regarding our non-discrimination obligations, please contact the City of Bellevue's ADA, Title VI and Equal Opportunity Officer at ADATitleVI@bellevuewa.gov. For more project information, please contact Service First at 425-452-6800.

For alternate formats, interpreters, or reasonable modification requests please phone at least 48 hours in advance 425-452-7925(voice) or email ghagstrom@bellevuewa.gov. For complaints regarding modifications, contact the City of Bellevue ADA, Title VI, and Equal Opportunity Officer at ADATitleVI@bellevuewa.gov.