



New Neighborhood Park in Eastgate

Please join us for Community Meeting #2:

South Bellevue Community Center:

Thursday, March 27 | 6-7:30 p.m.

14509 SE Newport Way | Bellevue, WA 98006

We are excited to share a few park design alternatives which were developed based upon community feedback and priorities for the new park.

Time will be provided after the presentation for you to share your comments and questions with us.

For additional information, please go to the Eastgate Neighborhood Park project website:

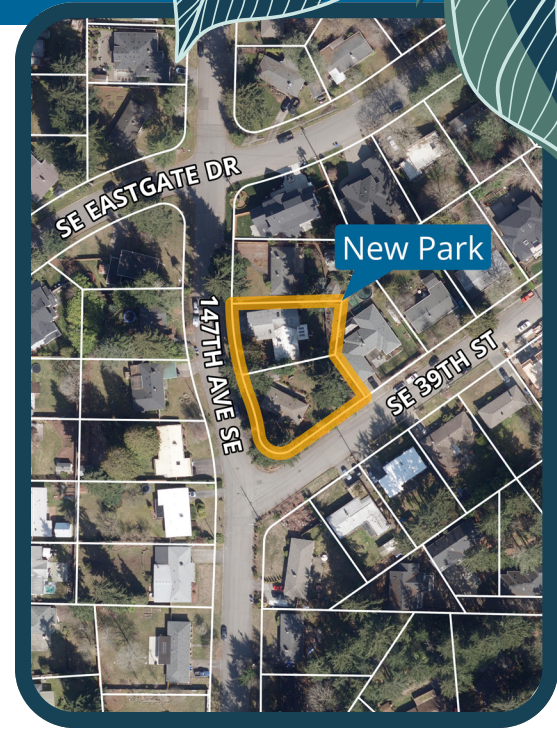
BellevueWA.gov/eastgate-park-plan



For more information or to provide comments contact:

Zarrian Smith, Project Manager

425-452-4883 | **zsmith@bellevuewa.gov**





Parks & Community Services
 450 110th Avenue NE
 Bellevue WA 98004


PRSR STD
 U.S. POSTAGE
PAID
 PERMIT #420
 BELLEVUE, WA

New Neighborhood Park in Eastgate

Community Meeting #2

**Join us to learn and participate
 in the park planning!**

Information
 정보  情報
 सूचना  資料
425-452-6800
 సమాచారం Thông Tin
 Información معلومات
 اطلاعات Информација

 For alternate formats, interpreters,
 or reasonable modification requests
 please phone at least 48 hours in advance
 425-452-4883 (voice) or email [zsmith@
 bellevuewa.gov](mailto:zsmith@bellevuewa.gov). For complaints regarding
 modifications, contact the City of Bellevue
 ADA, Title VI, and Equal Opportunity
 Officer at ADATitleVI@bellevuewa.gov.

PCS-25-35534