

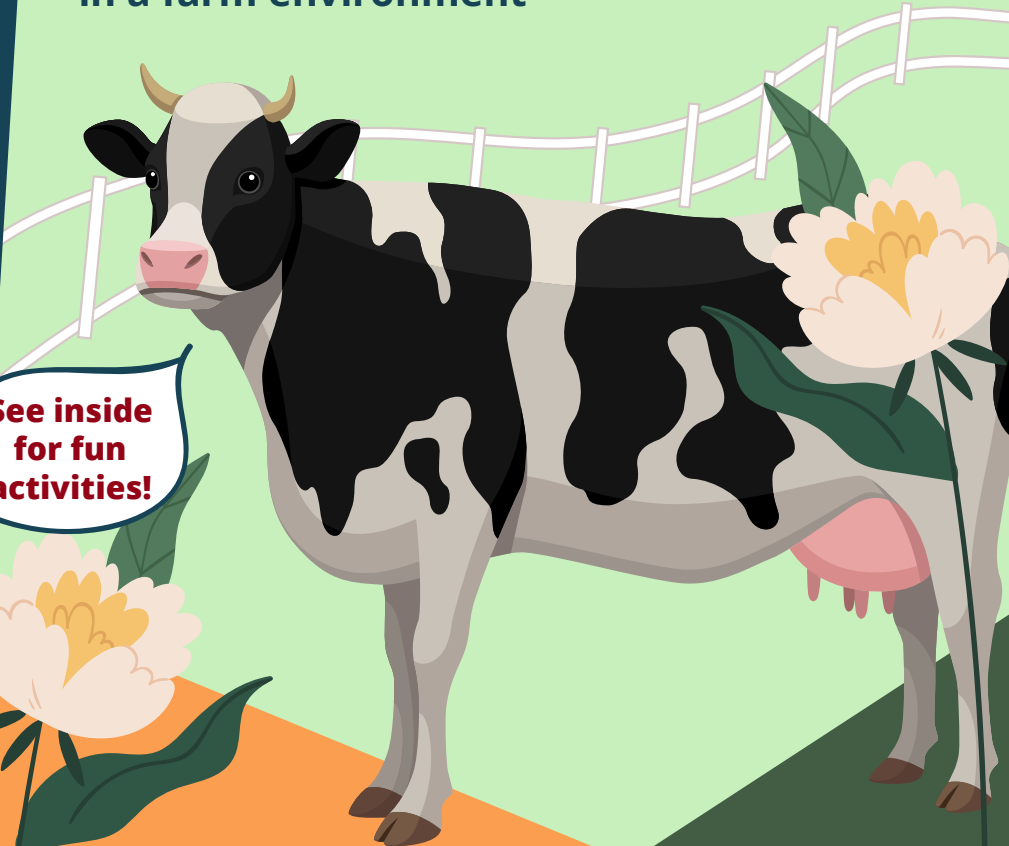


**SUMMER
2025**

KELSEY CREEK FARM

**Promoting learning opportunities
in a farm environment**

**See inside
for fun
activities!**





Kelsey Creek Farm offers the community a unique opportunity to step out of urban life and into a working farm experience while preserving its historic character through interpretive displays and educational programs. Our activities promote creativity, hands-on learning, and outdoor exploration for visitors of all ages. Admission is free, though donations are always appreciated. The farm provides a welcoming environment to connect with nature, observe farm animals, and participate in seasonal events.

When visiting any Bellevue park, please keep all dogs and pets on a leash. For the health and safety of our farm animals, kindly follow posted signs restricting pets from the barnyard.

**FARM ANIMALS IN THE PASTURES
DAILY FROM 9 a.m.-3 p.m.
365 DAYS A YEAR
(R) RESIDENT / (N) NON-RESIDENT**

Summer Day Camps

Kelsey Creek Day Camp

Experience a summer full of adventure, creativity, and fun! Enjoy active outdoor games, hands-on activities, and engaging crafts while making new friends. Our trained staff provide a safe and supportive environment where kids can learn, play, and explore. Each week brings a variety of exciting experiences, ensuring no two days are the same. Get ready for a season of discovery, laughter, and unforgettable memories!

Location: Kelsey Creek Farm

Ages: 4-6

Camp Fees: \$316 (R) / \$379 (N)

***Adjusted Fees:** \$253 (R) / \$304 (N)

Hours/Dates: Mon-Fri, 9:30 a.m.-3 p.m.

Extended Care Package Available

Fees: \$136 (R) / \$163 (N)

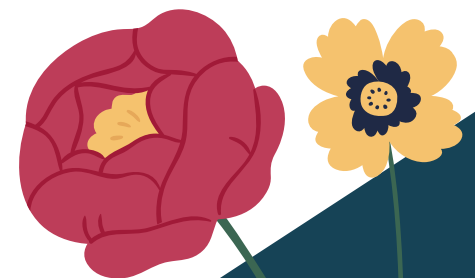
***Adjusted Fees:** \$109 (R) / \$131 (N)

Hours: 7:30 a.m.-5:30 p.m.

Out on the Farm

Get a hands-on experience with the rabbits and chickens as you discover what it takes to care for the smaller animals on the farm. Learn about a chicken's diet and how bunnies stay cool during the summer heat. Pitch in with farm chores like gathering fresh eggs and preparing special treats for the chickens. It's a fun and educational way to connect with the animals and learn about farm life!

[June 24-27*](#)



Country Fair

Campers, step back in time to experience the charm of an old-fashioned country fair! Work with your group to bake a delicious pie for a contest, try your hand at classic fair games, and unwind with a refreshing glass of lemonade. This camp is filled with exciting activities and timeless fair traditions. From crafts to outdoor games, there's something special for everyone to enjoy!

[June 30-July 3*](#)

Farm Science

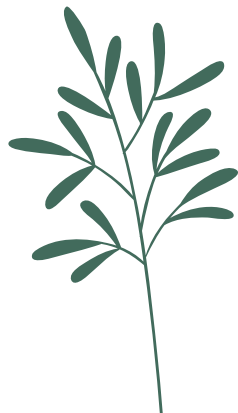
Discover the wonders of the farm with a week of hands-on science and outdoor fun! Test your engineering skills by designing a contraption to protect a falling egg, explore the science behind why pigs love mud, and create a messy, muddy masterpiece for your own toy piglet. Each day is packed with farm-inspired experiments, exciting outdoor games, and creative activities that bring science to life in the most fun and unexpected ways!

[July 7-11](#)

Game Time on the Farm

Campers will compete with their friends in barnyard relay races, tackle a western-style obstacle course, and join in a variety of exciting sports and games. From Minute-to-Win-It challenges to Farm Walks there's something for everyone to enjoy. As the week comes to a close, don't miss out on the excitement of the Farm Olympics, where all the skills and teamwork developed throughout the week come together in one grand field day. Get ready for a week of fun, friendly competition, and unforgettable memories!

[July 14-18](#)



Wildlife Beyond the Barnyard

Discover the wide variety of animals that call Kelsey Creek Farm Park home. Create your own pair of binoculars and set off to explore the nearby wetlands, forests, and creek sides in search of owls, blue herons, beavers, bobcats, and more! With hands-on activities, nature hikes, and games, campers will learn about local ecosystems and the creatures that thrive in them. It's a week full of outdoor adventure, discovery, and a deep dive into the fascinating world of wildlife!

[July 21-25](#)

Country Cooking

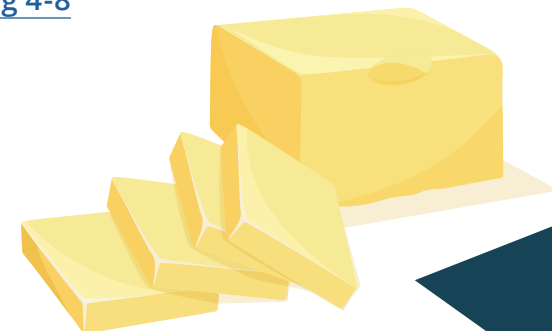
Roll up your sleeves and bake classic goodies, make special treats for the ponies, and create fun crafts inspired by food. Campers will turn fresh milk from a certified Western Washington dairy into butter, then taste test it on crackers for a delicious treat. With plenty of hands-on activities, campers will explore the art of farm-to-table cooking and discover the joy of preparing their own homemade delights!

[July 28-Aug 1](#)

Stay Cool

Beat the summer heat and learn how the Kelsey Creek Farm animals stay cool on those hot summer days by filling water toughs, making frozen treats for the rabbits, and watching the pig roll in the mud. Get ready for wet and refreshing fun as you cool off with outdoor water games, cooling activities, and plenty of water-themed crafts. This week will also include a field trip to Robinswood Park for a fun-filled water carnival.

[Aug 4-8](#)



Young Farmers

Get ready to become a Young Farmer! Campers will help prepare the barn stalls for the animals by bringing in fresh bedding, take a goat on a walk, and create a tasty treat for the pig. They'll learn the differences between hay and straw, discover what animals need to stay healthy, and gain important skills for staying safe around large farm animals. It's a week full of farm fun, learning, and games!

[Aug 11-15](#)

Nature Science

Discover the wonders of nature! This camp is designed for young minds to explore the environment through hands-on activities, fun experiments, and outdoor play. Campers will learn about plants, animals, and bugs through fun crafts and activities. Enjoy outdoor adventures like nature walks and scavenger hunts to explore the world around us.

[Aug 18-22](#)

Farm Art

Unleash your creativity and explore the vibrant world of art! This week is dedicated to self-expression, imagination, and hands-on fun as campers dive into a variety of artistic mediums and techniques. Experiment with painting, drawing, and sculpting to create unique masterpieces. Participate in collaborative projects to build teamwork skills.

[Aug 25-29](#)

Kid's Connection Day Camp

Experience a summer full of adventure, creativity, and fun! Enjoy active outdoor games, hands-on activities, and engaging crafts while making new friends. Our trained staff provide a safe and supportive environment where kids can learn, play, and explore. Each week brings a variety of exciting experiences, ensuring no two days are the same. Get ready for a season of discovery, laughter, and unforgettable memories!

Location: Kelsey Creek Farm

Ages: 7-10

Camp Fees: \$345 (R) / \$414 (N)

***Adjusted Fees:** \$276 (R) / \$331 (N)

Hours/Dates: Mon-Fri, 9:30 a.m.-3:30 p.m.

Extended Care Package Available

Fees: \$121 (R) / \$145 (N)

***Adjusted Fees:** \$97 (R) / \$116 (N)

Hours: 7:30 a.m.-5:30 p.m.

Out on the Farm

Get a hands-on experience with the rabbits and chickens as you discover what it takes to care for the smaller animals on the farm. Learn about a chicken's diet and how bunnies stay cool during the summer heat. Pitch in with farm chores like gathering fresh eggs and preparing special treats for the chickens. It's a fun and educational way to connect with the animals and learn about farm life!

[June 24-27*](#)

Country Fair

Campers, step back in time to experience the charm of an old-fashioned country fair! Work with your group to bake a delicious pie for a contest, try your hand at classic fair games, and unwind with a refreshing glass of lemonade. This camp is filled with exciting activities and timeless fair traditions. From crafts to outdoor games, there's something special for everyone to enjoy!

[June 30-July 3*](#)

Farm Science

Discover the wonders of the farm with a week of hands-on science and outdoor fun! Test your engineering skills by designing a contraption to protect a falling egg, explore the science behind why pigs love mud, and create a messy, muddy masterpiece for your own toy piglet. Each day is packed with farm-inspired experiments, exciting outdoor games, and creative activities that bring science to life in the most fun and unexpected ways!

July 7-11

Game Time on the Farm

Campers will compete with their friends in barnyard relay races, tackle a western-style obstacle course, and join in a variety of exciting sports and games. From Minute-to-Win-It challenges to Farm Walks there's something for everyone to enjoy. As the week comes to a close, don't miss out on the excitement of the Farm Olympics, where all the skills and teamwork developed throughout the week come together in one grand field day. Get ready for a week of fun, friendly competition, and unforgettable memories!

July 14-18

Wildlife Beyond the Barnyard

Discover the wide variety of animals that call Kelsey Creek Farm Park home. Create your own pair of binoculars and set off to explore the nearby wetlands, forests, and creek sides in search of owls, blue herons, beavers, bobcats, and more! With hands-on activities, nature hikes, and games, campers will learn about local ecosystems and the creatures that thrive in them. It's a week full of outdoor adventure, discovery, and a deep dive into the fascinating world of wildlife!

July 21-25

Country Cooking

Roll up your sleeves and bake classic goodies, make special treats for the ponies, and create fun crafts inspired by food. Campers will turn fresh milk from a certified Western Washington dairy into butter, then taste test it on crackers for a delicious treat. With plenty of hands-on activities, campers will explore the art of farm-to-table cooking and discover the joy of preparing their own homemade delights!

July 28-Aug 1

Stay Cool

Beat the summer heat and learn how the Kelsey Creek Farm animals stay cool on those hot summer days by filling water toughs, making frozen treats for the rabbits, and watching the pig roll in the mud. Get ready for wet and refreshing fun as you cool off with outdoor water games, cooling activities, and plenty of water-themed crafts. This week will also include a field trip to Robinswood Park for a fun-filled water carnival.

Aug 4-8

Young Farmers

Get ready to become a Young Farmer! Campers will help prepare the barn stalls for the animals by bringing in fresh bedding, take a goat on a walk, and create a tasty treat for the pig. They'll learn the differences between hay and straw, discover what animals need to stay healthy, and gain important skills for staying safe around large farm animals. It's a week full of farm fun, learning, and games!

Aug 11-15



Nature Science

Discover the wonders of nature! This camp is designed for young minds to explore the environment through hands-on activities, fun experiments, and outdoor play. Campers will learn about plants, animals, and bugs through fun crafts and activities. Enjoy outdoor adventures like nature walks and scavenger hunts to explore the world around us.

[Aug 18-22](#)

Farm Art

Unleash your creativity and explore the vibrant world of art! This week is dedicated to self-expression, imagination, and hands-on fun as campers dive into a variety of artistic mediums and techniques. Experiment with painting, drawing, and sculpting to create unique masterpieces. Participate in collaborative projects to build teamwork skills.

[Aug 25-29](#)



Farm Discoveries Camp

Join us at this hands-on adventure as you explore Kelsey Creek Farm. Children actively participate in animal care, making animal treats, working on barnyard chores, and learning fun facts about the farm. Time to play, arts and crafts, and circle time helps children develop important social skills. This special half-day camp will have your child loving our chickens, goats, cows, pigs, and rabbits. A pony ride will be included.

Location: Kelsey Creek Farm

Ages: 4-6

Fees: \$303 (R) / \$364 (N)

***Adjusted Fees:** \$242 (R) / \$290

Hours/Dates: Mon-Fri, 9 a.m.-1 p.m.

[June 24-27*](#)

[June 30-July 3*](#)

[July 7-11](#)

[July 14-18](#)

[July 21-25](#)

[July 28-Aug 1](#)

[Aug 4-8](#)

[Aug 11-15](#)

[Aug 18-22](#)

[Aug 25-29](#)



Robinswood Day Camp

Give your child an unforgettable summer experience at Robinswood Park! Our camps offer active play, imaginative adventures, and creative fun in a safe and nurturing environment. With highly trained and caring staff leading the way, each week promises exciting new experiences and opportunities to learn and grow. From outdoor exploration to engaging crafts and games, there's something special for everyone to enjoy. Let the fun and friendships begin!

Location: Robinswood Park

Ages: 4-7

Fees: \$316 (R) / \$379 (N)

***Adjusted Fees: \$253 (R) / \$304 (N)**

Hours/Dates: Mon-Fri, 9:30 a.m.-3 p.m.

Extended Care Package Available

Fees: \$91 (R) / \$109 (N)

***Adjusted Fees: \$73 (R) / \$88 (N)**

Hours: 8:30 a.m.-5 p.m.

Animal Adventures

Does your child have a love for animals? Campers will explore the fascinating world of animals, from domestic pets to exotic wildlife. They'll learn about animal behavior, habitats, and what it takes to care for different species. Campers will participate in animal-themed games and create crafts inspired by their favorite animals. Celebrate our furry and feathery friends!

[June 24-27*](#)

Salty Seas

Ahoy, mateys! Set sail on a deep-sea adventure filled with games, crafts, and water activities. Dream up your own pirate's name, create an underwater scene with sand and seashells, and get active with a lively game of sharks and minnows. Campers will have a blast learning about sea creatures while making new friends along the way!

[June 30-July 3*](#)

Wonders of Science

Explore the wonders of science with hands-on fun! Build your own mini greenhouse, plant a seed, test your engineering skills with an egg drop challenge, and learn about germs and the importance of hand washing with interactive activities. Through hands-on experiments, campers will learn how science shapes the world around them!

[July 7-11](#)

Ready, Set...Go!

Join us for an action-packed week filled with fun games, sports, and endless excitement! Race in relays with new friends and test your skills on an obstacle course. Campers will also head to Kelsey Creek Farm for a camp-wide Olympics event. Sharpen your teamwork and sportsmanship with exciting challenges and group activities. It's a week of non-stop fun and friendly competition!

[July 14-18](#)

Out and About in Nature

Get ready to explore the great outdoors! Take a hike through Robinswood Park to discover unique plants, bugs, and animals in their natural habitats. Create your own binoculars and go for a nature scavenger hunt to spot tiny creatures and hidden treasures. Campers will spend time outside connecting with nature through hands-on activities, fun games, and outdoor adventures.

[July 21-25](#)

Camper's Kitchen

Put on your apron and get ready to satisfy your taste buds! Campers will whip up delicious treats in the Robinswood kitchen, including making butter from cream and tasting it with yummy crackers. You'll also get creative with food-inspired crafts and games. Plus, decorate your own cupcakes with colorful frostings and toppings to make them uniquely yours. It's a week full of fun and tasty treats!

[July 28-Aug 1](#)

Let's Get Wet

Dive into a week filled with splashes and creativity! Design your own sea creatures and sculpt them from clay, bringing your underwater imagination to life. Stay cool with exciting water games like sponge relays and water balloon tosses; run through sprinklers and enjoy the ultimate camp-wide water carnival. Get ready for endless laughs, excitement, and plenty of water fun!

[Aug 4-8](#)

Go Go with Van Gogh Art Camp

Fine arts on the farm, inspired by the Kelsey Creek Farm environment. This art focused camp is designed to celebrate individual interests of creative expressions through artistic guided exploration and outdoor play for increased joy. Multiple-media projects using colorful acrylics, watercolor with color theory exploration, sculpting with Model Magic, creating collages and oil pastels along with sketching on the farm. Dress for creative mess and bring your playful imagination. Instructor Diane Culhane is a renowned artist in the Pacific Northwest with a master's degree in art education and extensive teaching experience. \$20 supply fee due the first day of camp.

Location: Kelsey Creek Farm

Ages: 6-11

Fees: \$490 (R) / \$588 (N)

***Adjusted Fees:** \$392 (R) / \$470 (N)

Hours/Dates: Mon-Fri, 9:30 a.m.-3 p.m.

Extended Care Package Available

Fees: \$136 (R) / \$163 (N)

***Adjusted Fees:** \$109 (R) / \$131 (N)

Dates/Hours: Mon-Fri, 7:30 a.m.-5:30 p.m.

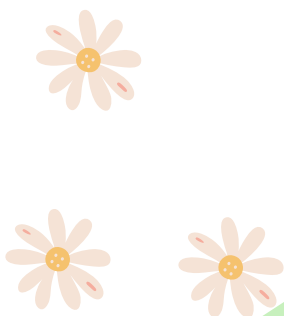
[Jun 24-27*](#)

[Jun 30-Jul 3*](#)

[Jul 7-11](#)

[Jul 14-18](#)

[Aug 4-8](#)



Farm Adventurers Camp

Spend a week exploring the world of farming! Activities will include animal interactions, agricultural education, and actual work experience for which your child will receive an official volunteer certificate. Participants will learn to work with various farm animals. They will create crafts, learn about the history of Seattle-area agriculture, and participate in farm chores.

Location: Kelsey Creek Farm

Ages: 11-13

Camp Fees: \$193 (R) / \$232 (N)

***Adjusted Camp Fees:** \$154 (R) / \$185 (N)

Dates/Hours: Mon-Fri, 9 a.m.-2:30 p.m.

[Jun 24-27*](#)

[Jun 30-Jul 3*](#)

[Jul 7-11](#)

[Jul 14-18](#)

[July 21-25](#)

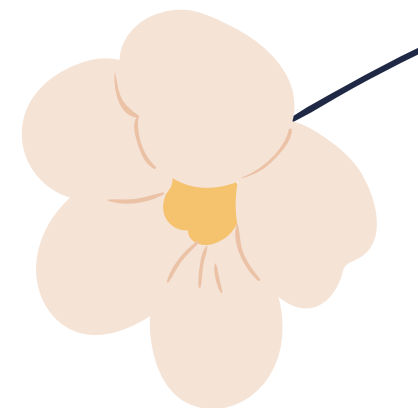
[July 28-Aug 1](#)

[Aug 4-8](#)

[Aug 11-15](#)

[Aug 18-22](#)

[Aug 25-29](#)



Cartooniversity Day Camp

Join professional cartoonist Jeff Johnson for a unique opportunity for kids of all skill levels to explore the art of cartooning in an encouraging, positive classroom environment at Robinswood Park. A series of fun, challenging projects showcase multiple areas of study including faces, bodies, character development, layout, perspective, lettering and much more. The emphasis is on developing each student's own style. All materials provided. Come join the fun!

Location: Robinswood Park

Ages: 9-14

Fees: \$425 (R) / \$510 (N)

Hours/Dates: Mon-Fri, 10 a.m.-3 p.m.

[Aug 11-15](#)

[Aug 18-22](#)

Future Equine Veterinarian Camp

Saddle up for an equine adventure! Aspiring veterinarians with a passion for horses will embark on a journey to become experts in horse care. They'll pledge to use real medical tools to ensure the well-being of their plush horse companions. Campers will delve into horse anatomy, riding styles, nutrition, and, upon successful completion, they'll ride off into the sunset with their diplomas. This program does not include a pony ride.

Location: Kelsey Creek Farm

Ages: 4-6

Fees: \$350 (R) / \$420 (N)

Hours/Dates: Mon-Fri, 9:15 a.m.-12:15 p.m.

[July 21-25](#)

Future Canine Veterinarian Camp

Embrace your inner animal healer! Campers in this program will assume the role of veterinarians and learn how to care for dogs. Their education will cover topics like tick removal, comprehensive nose-to-tail exams, proper pet nutrition, suturing lacerations, and more.

Location: Kelsey Creek Farm

Ages: 6-8

Fees: \$350 (R) / \$420 (N)

Hours/Dates: Mon-Fri, 1-4 p.m.

[July 21-25](#)

Crazy ChemWorks

Your junior chemist will create surprising concoctions, break molecules with ease, and shake up a flask full of fun. They'll use the tools, safety procedures, and laboratory techniques of real chemists as they investigate solids, liquids, and gasses at the atomic level. Craft chemical combinations to create super-sticky-stuff and discover properties of light. Exploring the elements has never been so much fun!

Location: Kelsey Creek Farm

Ages: 6-11

Fees: \$331 (R) / \$397 (N)

Hours/Dates: Mon-Fri, 9 a.m.-noon

[Aug 18-22](#)



Teen Programs

Summer Teen Farm Program

Assist Kelsey Creek Farm staff in providing daily care to our farm animals. Help prepare meals for the animals, clean barn stalls, assist with other farm chores, and help bring the animals out to pasture for the day and back into the barn in the evening. Teens will learn responsible animal care, job skills, and independence while earning service hours for school.

Location: Kelsey Creek Farm

Ages: 14-18

Fees: \$50 (R) / \$60 (N)

***Adjusted Fees:** \$40 (R) / \$48 (N)

Hours/Dates: 8:30 a.m.-4 p.m.

[Jun 24-27*](#)

[Jun 30-Jul 3*](#)

[Jul 7-11](#)

[Jul 14-18](#)

[July 21-25](#)

[July 28-Aug 1](#)

[Aug 4-8](#)

[Aug 11-15](#)

[Aug 18-22](#)

[Aug 25-29](#)



Counselor in Training: Kelsey Creek Day Camp

Counselor in Training (CIT) volunteers work alongside Day Camp staff to create a positive, fun, and engaging experience for children in our day camp programs. As a CIT you will assist with leading activities, encourage participation, and build meaningful connections with campers through active involvement and support. You'll serve as a role model by demonstrating enthusiasm, kindness, and teamwork, helping to create an inclusive and welcoming environment where every camper feels valued. This volunteer opportunity is an excellent way to gain hands-on experience working with children and develop leadership and teamwork skills. CITs earn community service hours while contributing to a memorable and enriching camp experience for campers. Kelsey Creek Day Camp is a full day, general recreation day camp. Each week is centered around a different theme. CITs will gain experience working with 4-6 year olds.

Location: Kelsey Creek Farm

Ages: 15-18

Fees: \$15 (R) / \$18 (N)

Hours/Dates: Mon-Fri, 8:30 a.m.-3:30 p.m.

[Jun 24-27](#)

[Jun 30-Jul 3](#)

[Jul 7-11](#)

[Jul 14-18](#)

[July 21-25](#)

[July 28-Aug 1](#)

[Aug 4-8](#)

[Aug 11-15](#)

[Aug 18-22](#)

[Aug 25-29](#)



Counselor in Training: Kid's Connection Day Camp

Counselor in Training (CIT) volunteers work alongside Day Camp staff to create a positive, fun, and engaging experience for children in our day camp programs. As a CIT you will assist with leading activities, encourage participation, and build meaningful connections with campers through active involvement and support. You'll serve as a role model by demonstrating enthusiasm, kindness, and teamwork, helping to create an inclusive and welcoming environment where every camper feels valued. This volunteer opportunity is an excellent way to gain hands-on experience working with children and develop leadership and teamwork skills. CITs earn community service hours while contributing to a memorable and enriching camp experience for campers. Kid's Connection Day Camp is a full day, general recreation day camp. Each week is centered around a different theme. CITs will gain experience working with 7-10 year olds.

Location: Kelsey Creek Farm

Ages: 15-18

Fees: \$15 (R) / \$18 (N)

Hours/Dates: Mon-Fri, 8:30 a.m.-3:30 p.m.

[Jun 24-27](#)

[Jun 30-Jul 3](#)

[Jul 7-11](#)

[Jul 14-18](#)

[July 21-25](#)

[July 28-Aug 1](#)

[Aug 4-8](#)

[Aug 11-15](#)

[Aug 18-22](#)

[Aug 25-29](#)



Counselor in Training: Robinswood Day Camp

Counselor in Training (CIT) volunteers work alongside Day Camp staff to create a positive, fun, and engaging experience for children in our day camp programs. As a CIT you will assist with leading activities, encourage participation, and build meaningful connections with campers through active involvement and support. You'll serve as a role model by demonstrating enthusiasm, kindness, and teamwork, helping to create an inclusive and welcoming environment where every camper feels valued. This volunteer opportunity is an excellent way to gain hands-on experience working with children and develop leadership and teamwork skills. CITs earn community service hours while contributing to a memorable and enriching camp experience for campers. Robinswood Day Camp is a full day, general recreation day camp. Each week is centered around a different theme. CITs will gain experience working with 4-7 year olds.

Location: Robinswood Park

Ages: 15-18

Fees: \$15 (R) / \$18 (N)

Hours/Dates: Mon-Fri 9 a.m.-3:30 p.m.

[Jun 24-27](#)

[Jun 30-Jul 3](#)

[Jul 7-11](#)

[Jul 14-18](#)

[July 21-25](#)

[July 28-Aug 1](#)

[Aug 4-8](#)

Counselor in Training: Farm Discoveries Day Camp

Counselor in Training (CIT) volunteers work alongside Day Camp staff to create a positive, fun, and engaging experience for children in our day camp programs. As a CIT you will assist with leading activities, encourage participation, and build meaningful connections with campers through active involvement and support. You'll serve as a role model by demonstrating enthusiasm, kindness, and teamwork, helping to create an inclusive and welcoming environment where every camper feels valued. This volunteer opportunity is an excellent way to gain hands-on experience working with children and develop leadership and teamwork skills. CITs earn community service hours while contributing to a memorable and enriching camp experience for campers. Farm Discoveries camp is a half day, farm focused camp. CITs will work with 4-6 year olds.

Location: Kelsey Creek Farm

Ages: 15-18

Fees: \$15 (R) / \$18 (N)

Hours/Dates: Mon-Fri, 8:30 a.m.-1:30 p.m.

[Jun 24-27](#)

[Jun 30-Jul 3](#)

[Jul 7-11](#)

[Jul 14-18](#)

[July 21-25](#)

[July 28-Aug 1](#)

[Aug 4-8](#)

[Aug 11-15](#)

[Aug 18-22](#)

[Aug 25-29](#)



Counselor in Training: Farm Adventurers Day Camp

Counselor in Training (CIT) volunteers work alongside Day Camp staff to create a positive, fun, and engaging experience for children in our day camp programs. As a CIT you will assist with leading activities, encourage participation, and build meaningful connections with campers through active involvement and support. You'll serve as a role model by demonstrating enthusiasm, kindness, and teamwork, helping to create an inclusive and welcoming environment where every camper feels valued. This volunteer opportunity is an excellent way to gain hands-on experience working with children and develop leadership and teamwork skills. CITs earn community service hours while contributing to a memorable and enriching camp experience for campers. Farm Adventurers is a full day camp that explores topics including farm animals, nature, and art. CITs will gain experience work with 11-13 year olds.

Location: Kelsey Creek Farm

Ages: 15-18

Fees: \$15 (R) / \$18 (N)

Hours/Dates: Mon-Fri, 8:30 a.m.-3 p.m.

[Jun 24-27](#)

[Jun 30-Jul 3](#)

[Jul 7-11](#)

[Jul 14-18](#)

[July 21-25](#)

[July 28-Aug 1](#)

[Aug 4-8](#)

[Aug 11-15](#)

[Aug 18-22](#)

[Aug 25-29](#)



Drop In Programs

Bats on the Farm

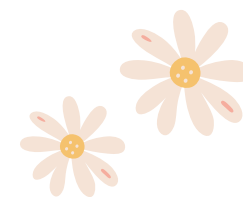
Discover bats and the important role they play in Bellevue's ecology. Bats Northwest will teach us about bats that live in the Pacific Northwest and beyond. After dusk, we will scan the evening skies to see the bats that live at Kelsey Creek Farm and use a bat detector to see and hear the resident bats at work. Appropriate for teenagers and adults. Children must be accompanied by an adult. Registration recommended but not required.

Ages: Recommended for 16+

Fees: Free

Hours/Date: Fri, 7:30-9:30 p.m.

[Aug 15](#)



Fraser Cabin Heritage Program

Presented by the Eastside Heritage Center in partnership with Bellevue Parks & Community Services, the Fraser Cabin, built in 1888, comes to life with hands-on activities that relate to 1880s settler life. For more information, contact the Eastside Heritage Center at 425-450-1049, or visit eastsideheritagecenter.org. Registration not required.

Ages: Open to all ages

Fees: Free

Hours/Dates: Sat, 11 a.m.-3 p.m.

[Jun 14](#)

[Jul 12](#)

[Aug 9](#)



Guided Farm Tours

Experience Kelsey Creek Farm with a tour designed specifically for groups. Choose from various year-round and seasonal themes. Guided farm tours are available weekdays and are approximately 45 minutes in length. Each tour includes time with a variety of farm animals and a group activity led by a member of our farm staff. Animals included in tour and group activities vary based on tour themes.

*Please note animals available for interaction during the guided tour may change without notice based on individual animals' health and well-being.

Ages: most tours appropriate for children ages 2+ (see below for exceptions). Tour content is adjusted to accommodate the age of the audience. All tours can be adjusted for adult groups.

Kids on the Farm Group Tour

Available September-mid-June

Explore our historic dairy farm with hands-on fun as you meet our farm animals. Learn interesting animal facts and local history as you travel back in time to when Bellevue was mostly farmland and forest. Go into the animal barn to see where the animals sleep at night and work on barn "chores" with child-sized pails and rakes.

Fuzzy Farm Friends Group Tour

Available September-mid-June

Have you ever wondered where yarn and wool sweaters come from? How does a sheep give us a pair of warm wool socks? Meet the Kelsey Creek Farm sheep, watch a demo of wool carding, and learn about sheep and fiber processing. Children will create a fuzzy sheep craft to take home.

Pioneers on the Farm Group Tour

Available September-mid-June (recommended for ages 4+)

Imagine life in Bellevue in the 1880s. Children spend time looking around the Fraser cabin, built in 1888, and learning about what life was like for the pioneers when they arrived in the Bellevue area. Practice pioneer living history skills and go on a farm walk to learn how some of our farm animals would have been used by the pioneers.

Springtime in the Barnyard Group Tour

Available mid-May-mid-June only

Welcome springtime in the barnyard with a hands-on tour among our favorite animals. Learn about their care, then get dirty in the garden planting and watering seeds.

Fall on the Farm Group Tour

Available October only

Experience harvest season on the farm! Visit with some of our friendly farm animals and watch them eat a pumpkin treat. Then finish up by enjoying a story in our indoor off-the-vine pumpkin patch. Pumpkins are available for purchase for an additional fee.

Birthday Parties

All party packages are approximately two hours long. Parties are offered from 10 a.m.-12 p.m. and 12:30-2:30 p.m.. Each party begins with an approximately 45 minute guided tour and group activity led by a member of our farm staff. Activities and crafts vary based on party themes. The guided activity time is followed by a one-hour room rental for cake and presents.

*Please note: animals available for interaction may change without notice based on individual animals' health and well-being.

Room locations may vary, but all party locations are indoor and include:

- ◆ 3-4 preschool-height tables (6 feet long by 2.5 feet wide) with children's chairs
- ◆ A refrigerator/freezer, microwave
- ◆ Kitchen sink and trash cans
- ◆ A restroom with hand-washing soap and paper towels

Maximum capacity for all parties is 30 people (number includes adults and children). Please note that only 25 people may participate in farm tour and craft activities. All capacities have been set to respect facility codes, the safety and well-being of the animals, and to ensure guest enjoyment.

Farm Birthday Party

Celebrate your child's birthday with a visit to our historic farm. Make memories meeting farm animal friends. Birthday party package includes an approximately 45-minute farm tour and farm-themed craft, followed by one hour of room rental.

Ages: 2-11

Fees: \$375 (R) \$450 (N)

Bunny Birthday Party

Celebrate your child's birthday by visiting the farm and meeting our friendly bunny. Enjoy a farm tour, a bunny craft, and extra time visiting the bunnies. Birthday party package includes approximately 45-minute farm tour and bunny themed craft, followed by one hour of room rental.

Ages: 2-11

Fees: \$375 (R) \$450 (N)

Pony Birthday Party

Celebrate your child's birthday by visiting the farm and meeting one of our ponies. Enjoy a farm tour, pony craft, and special time with the birthday pony. Birthday party package includes an approximately 45-minute farm tour and pony-themed craft, followed by one hour of room rental. Please note: this party does NOT include a pony ride.

Ages: 4-11

Fees: \$375 (R) \$450 (N)



Rentals

For more rental information including pricing and room specs, visit BellevueWA.gov/kelsey.

Outdoor Rentals

Kelsey Creek Farm Picnic Shelter

Rent Kelsey Creek Farm's Picnic Shelter for your next event! This covered picnic shelter has a capacity of 75 people and includes 6 picnic tables and 2 charcoal grills. To reserve visit our online catalog at Register.BellevueWA.gov. Questions?

Email kelseycreekfarm@bellevuewa.gov.



Indoor Rentals

Looking for space to host a party, class, or meeting? Kelsey Creek Farm features several indoor rental spaces including a farm house with a 760 square-foot community room and kitchen space as well as a 900 square-foot room in the historic 1943 barn. The unique farm setting makes these spaces perfect for memorable events.

Both rental spaces can be reserved seven days a week, and these spaces easily accommodate groups large or small with rooms for groups up to 30 people. To reserve, send an email with requested dates and times to kelseycreekfarm@bellevuewa.gov.



**Kelsey Creek Farm Room
(Education Barn)**

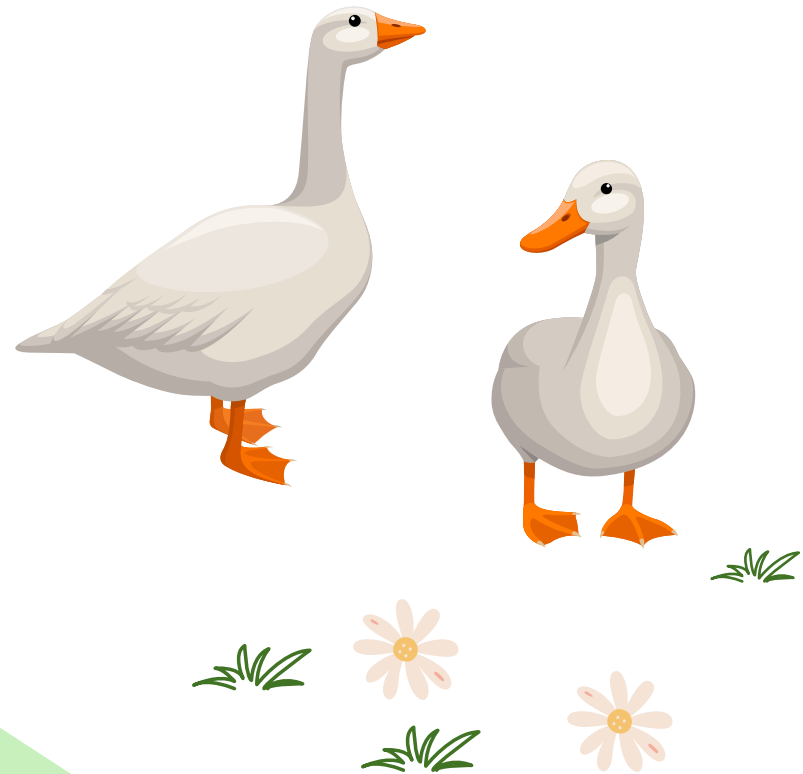


Kelsey Creek Farm House

Scholarships

Bellevue Parks & Community Services strives to make program opportunities available to all interested individuals who live in Bellevue, regardless of income. We provide financial assistance to those who might not otherwise be able to participate. Scholarships may be granted for the entire class fee or may provide a percentage discount, depending on individual circumstances.

Visit BellevueWA.gov/city-government/departments/parks/programs/scholarships for information and application.





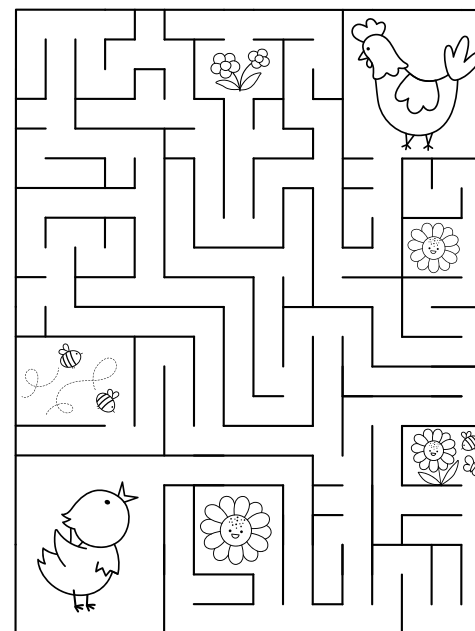
FARM HISTORY

The farm's history began in 1921, when the Duey Family rented 190 acres and began delivering cream and butter stamped with the name Twin Valley Dairy. In August of 1933 the original barn burned. Mr. Duey, a skilled carpenter, along with some hired hands, rebuilt the barn in two weeks. Today, this barn is the smaller of the two barns and is called the Animal Barn. Mr. Duey also built the Red Barn, originally used as a milk house.

The second dairy barn was built in 1943-44 by Mr. Michaels, the new owner, (this is the north barn now known as the Education Barn) and the dairy herd was increased in size. After the end of WWII, he sold the farmstead to Ray and Nettie Fisher. The Fishers phased out the dairy operation and began raising Hereford beef cattle. They built the current farmhouse in 1954 and moved to live on the property.

In 1968 neighbors to the farm began a movement to petition the Bellevue City Council to purchase the property and secure it as a public park. The neighbors' petition succeeded, and the city negotiated with the Fisher family to purchase the 80 acres, including the farmhouse, barns and outbuildings. The Fishers sold their farm property to the City at a price much reduced from what they knew that they could get from developers. They did so because they believed in preserving the beauty and legacy of the agricultural buildings and the land.

In 1972 the oldest barn was modified to house an assortment of farm animals for public viewing. The other, larger barn, commonly referred to as the Education Barn, was remodeled inside and used to accommodate a variety of community programs, including children's day camps, art classes, and farm-themed classes, to name just a few.



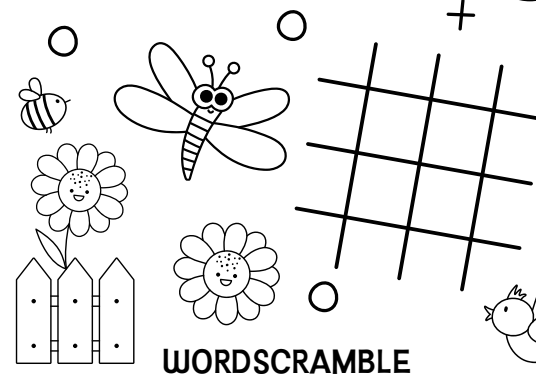
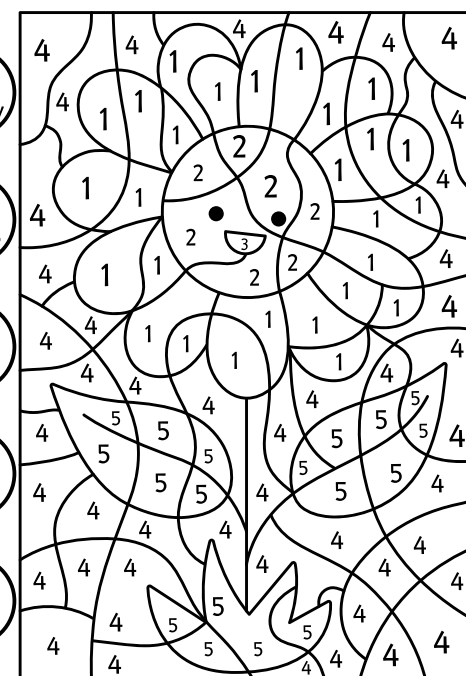
1
yellow

2
orange

3
black

4
blue

5
green



RAMF

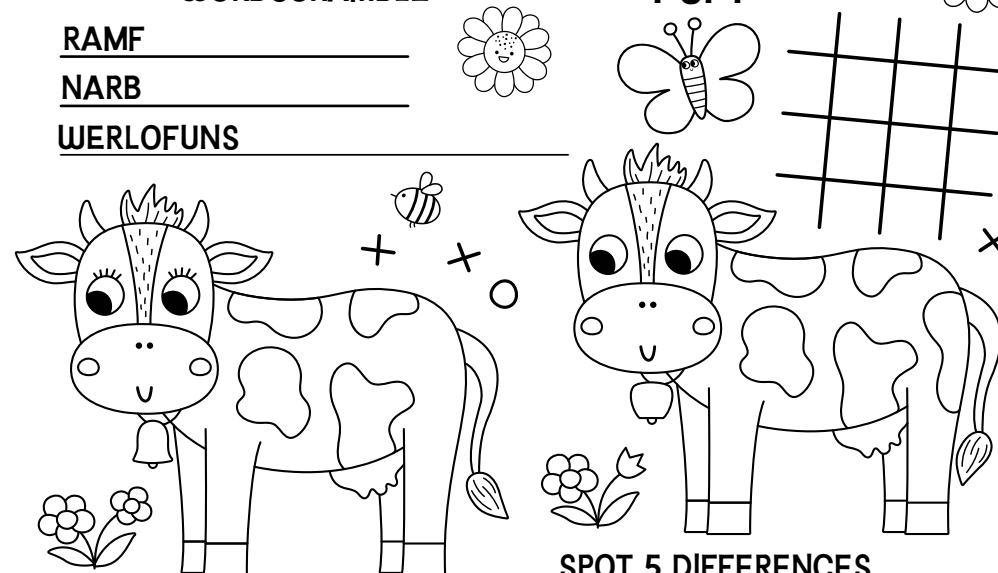
NARB

WERLOFUNS

HOW MANY
SUNFLOWERS
CAN YOU SPOT?



I SPY



SPOT 5 DIFFERENCES

REGISTER ONLINE!

register.bellevuewa.gov

Scholarships available
for many programs.

(R) RESIDENT

(N) NON-RESIDENT



Kelsey Creek Farm

410 130th Pl SE | Bellevue, WA 98005

425-452-7688

KelseyCreekFarm@bellevuewa.gov



For alternate formats, interpreters, or reasonable modification requests please phone at least 48 hours in advance 425-452-2020 (voice) or email sstenslie@bellevuewa.gov. For complaints regarding modifications, contact the City of Bellevue ADA, Title VI, and Equal Opportunity Officer at ADATitleVI@bellevuewa.gov.