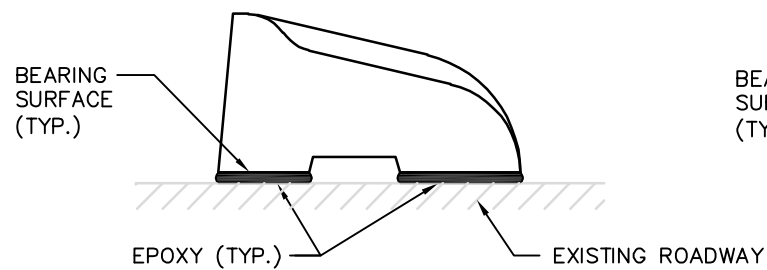
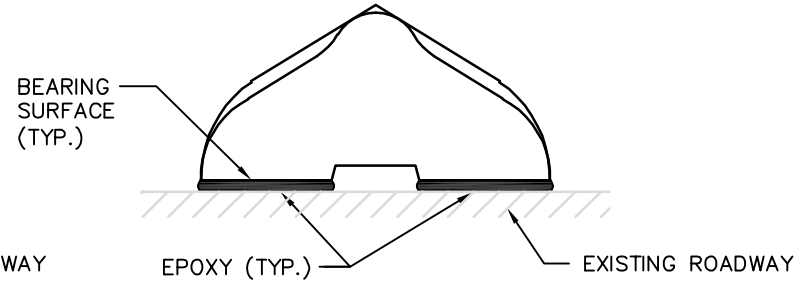


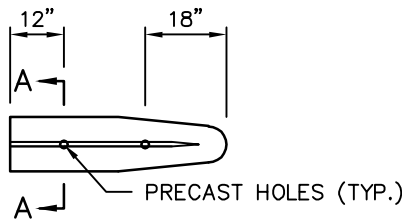
FOR MAINTENANCE OR EXTENSION OF EXISTING CURB ONLY. NOT FOR NEW INSTALLATIONS.
 (FOR NEW INSTALLATIONS SEE STD. DWGS. CH-150-1 AND CH-160-1)



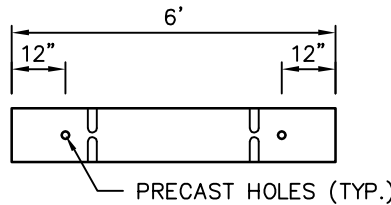
SECTION - TYPE A CURB



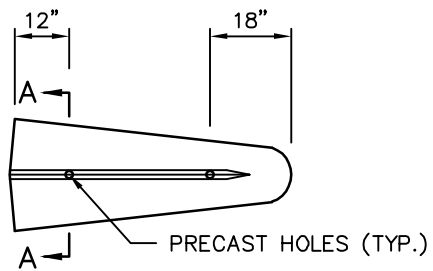
SECTION - TYPE C CURB



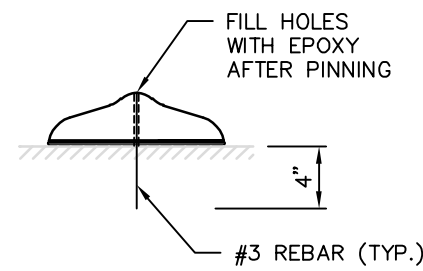
TYPE C NOSING



TYPE C OR TYPE A CONNECTING DIVIDER



TYPE A NOSING



SECTION A-A

NOTES:

1. NOSING AND NEXT TWO SECTIONS OF CURB SHALL HAVE HOLES PRECAST AS SHOWN.
2. PRECAST TRAFFIC CURB SHALL BE INSTALLED WITH AN EAS-06 OR EAS-08 TWO PART EPOXY. SEE STD. DWG. CH-300-1.
3. EPOXY SHALL BE PLACED UNDER THE BEARING SURFACE OF THE PRECAST TRAFFIC CURB.
4. SUFFICIENT EPOXY SHALL BE APPLIED TO ENSURE SQUEEZE-OUT OF 50% PER EACH SIDE OF EACH CURB SECTION.



PRECAST TRAFFIC CURB INSTALLATION
 FOR MAINTENANCE OF EXISTING CURB

DRAWING NUMBER	CH-140-1
SCALE	NONE
REVISION DATE	1/25
DEPARTMENT	TRANS