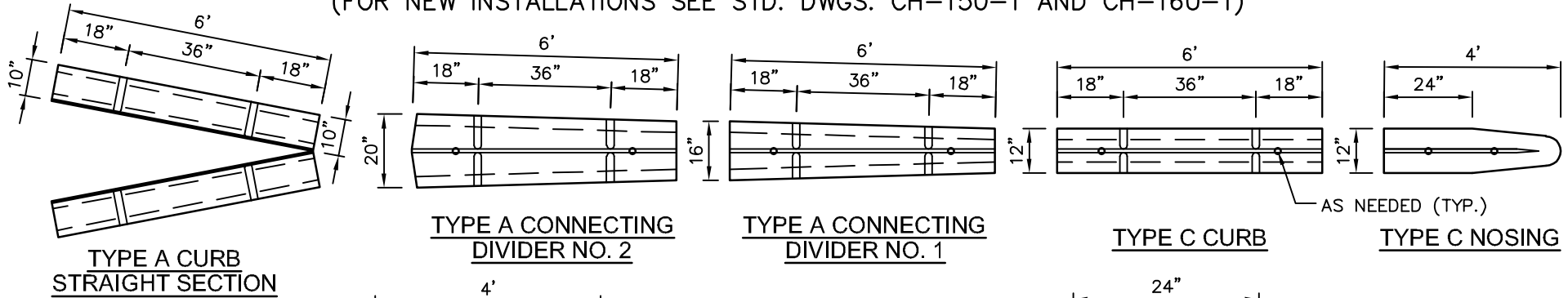


FOR MAINTENANCE OR EXTENSION OF EXISTING CURB ONLY. NOT FOR NEW INSTALLATIONS.
 (FOR NEW INSTALLATIONS SEE STD. DWGS. CH-150-1 AND CH-160-1)



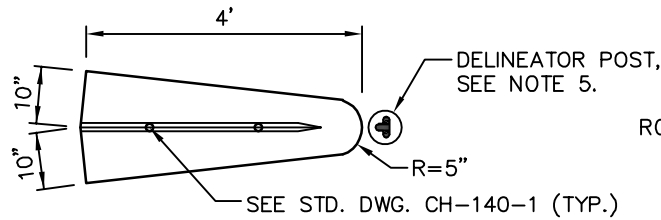
**TYPE A CURB
STRAIGHT SECTION**

**TYPE A CONNECTING
DIVIDER NO. 2**

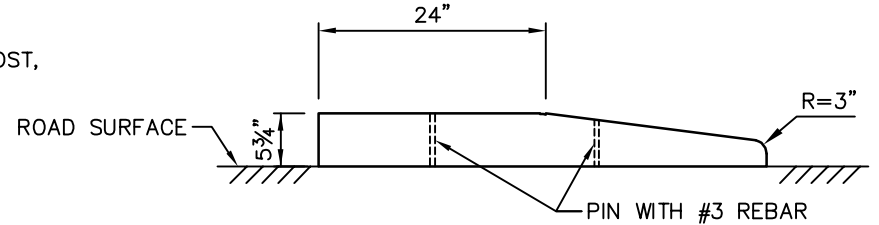
**TYPE A CONNECTING
DIVIDER NO. 1**

TYPE C CURB

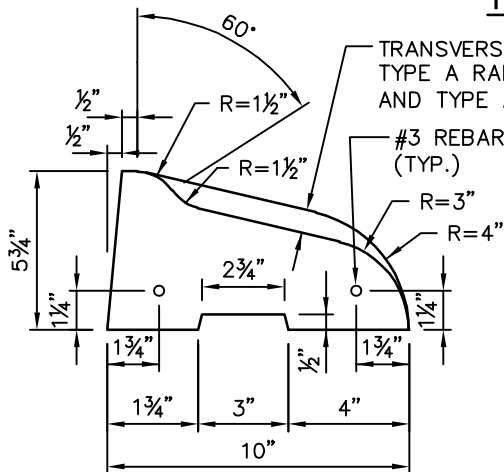
TYPE C NOSING



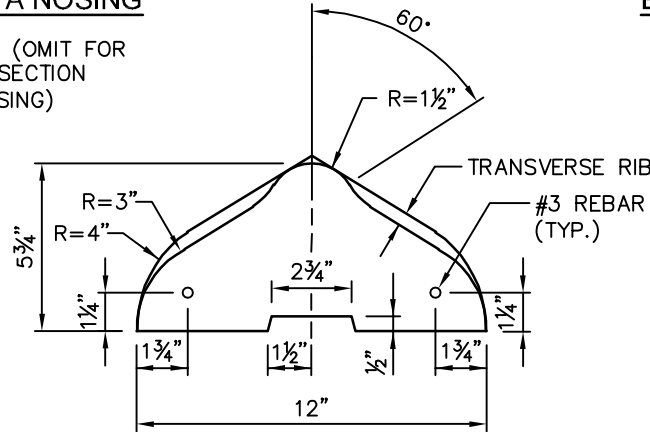
TYPE A NOSING



ELEVATION - TYPE A NOSING AND C NOSING



SECTION - TYPE A CURB



SECTION - TYPE C CURB

NOTES:

1. ONLY 6' SECTIONS OF TYPE C AND TYPE A CURB SHALL BE USED ON ALL INSTALLATIONS, EXCEPT FOR NOTE 2.
2. THE USE OF 1' BLOCK SECTIONS OF TYPE C AND TYPE A CURB SHALL ONLY BE USED TO FORM SMALL RADIUS CURVES OR ADJUSTMENTS IN FINAL LENGTH, AS APPROVED BY THE ENGINEER.
3. PRECAST TRAFFIC CURB SHALL BE INSTALLED WITH AN EAS-06 OR EAS-08 TWO PART EPOXY. SEE STD. DWG. CH-300-1.
4. PRECAST CURB NOSINGS AND NEXT TWO SECTIONS OF CURB SHALL BE BOTH PINNED AND EPOXIED TO THE ROAD SURFACE. SEE STD. DWG. CH-140-1.
5. DELINEATOR POST MAY BE REQUIRED AT CURB NOSE.



City of
Bellevue

PRECAST TRAFFIC CURBS
FOR MAINTENANCE OF EXISTING CURB

DRAWING NUMBER	CH-130-1
SCALE	NONE
REVISION DATE	1/25
DEPARTMENT	TRANS