



City of Bellevue

Bellevue Vision Zero in Action: A Review of Speed Safety Cameras

Franz Loewenherz, Mobility Planning and Solutions Manager
Transportation

July 29, 2025

Agenda



Bellevue Road Safety Trends



Vision Zero Policies, Plans, and Programs

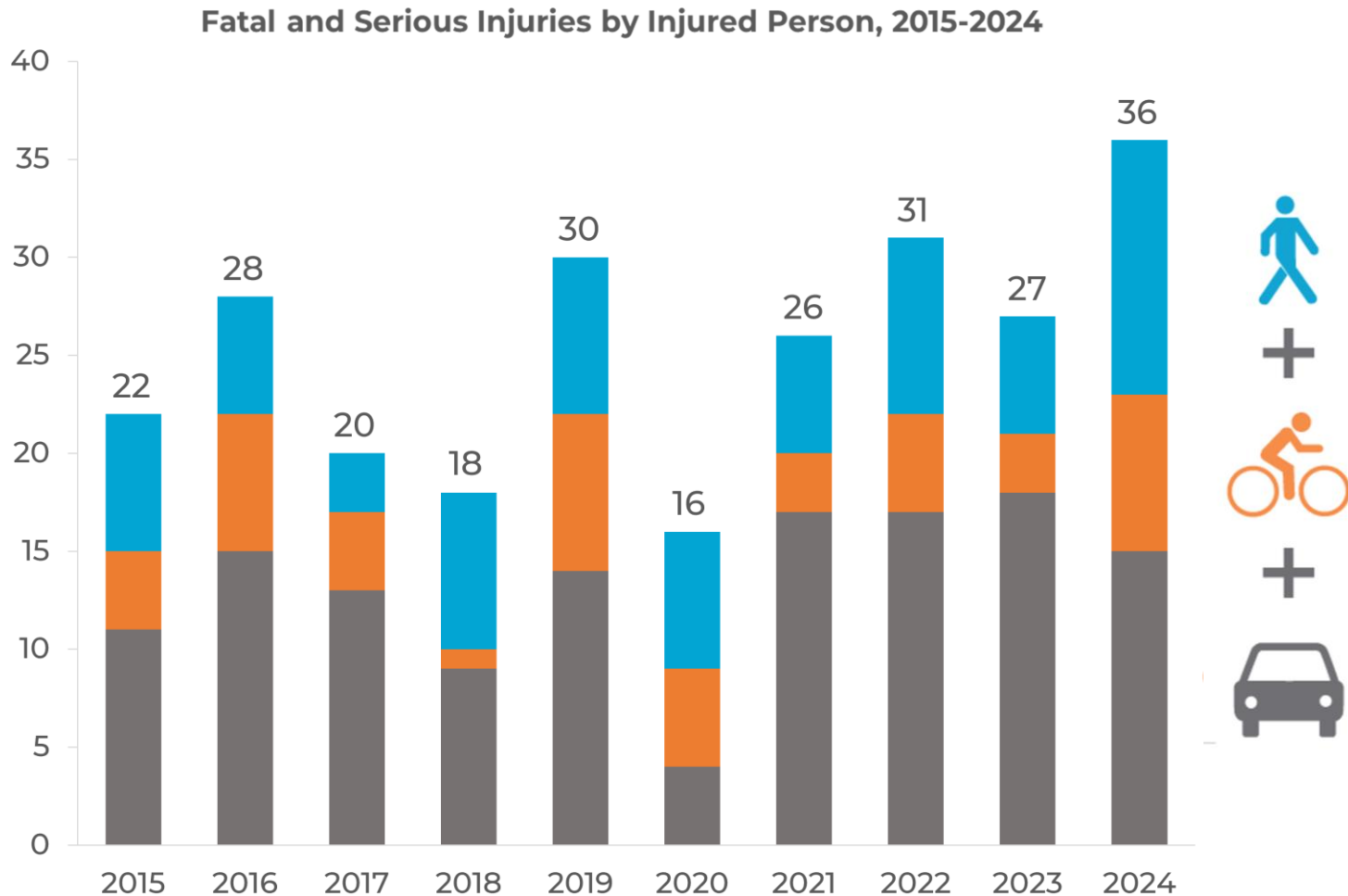


2025 Safe System Activities



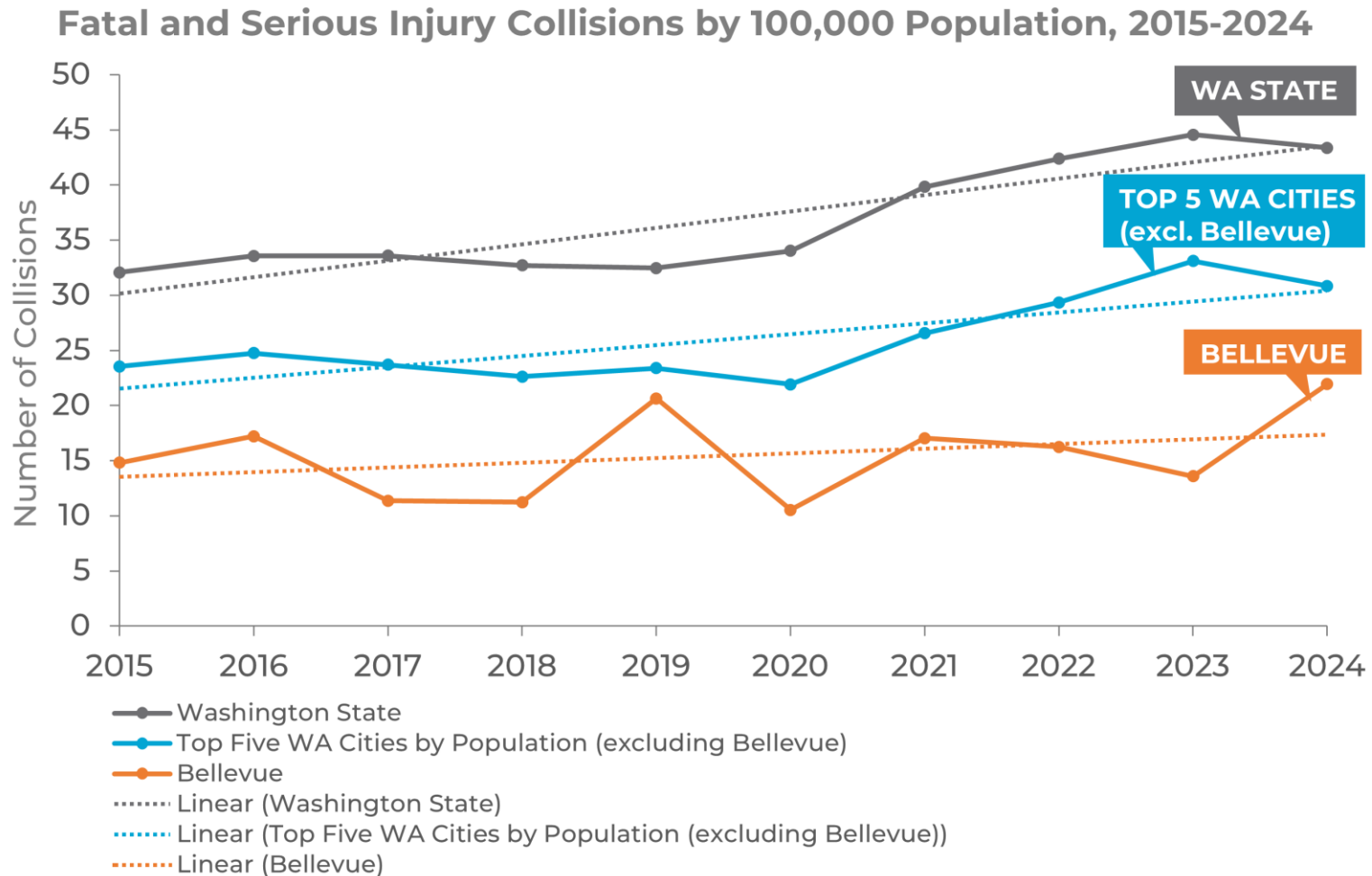
Speed Safety Camera Review

Fatal and Serious Injury Crashes



Source: Preliminary WSDOT Fatal and Serious Injury Collision Data (2015-2024)

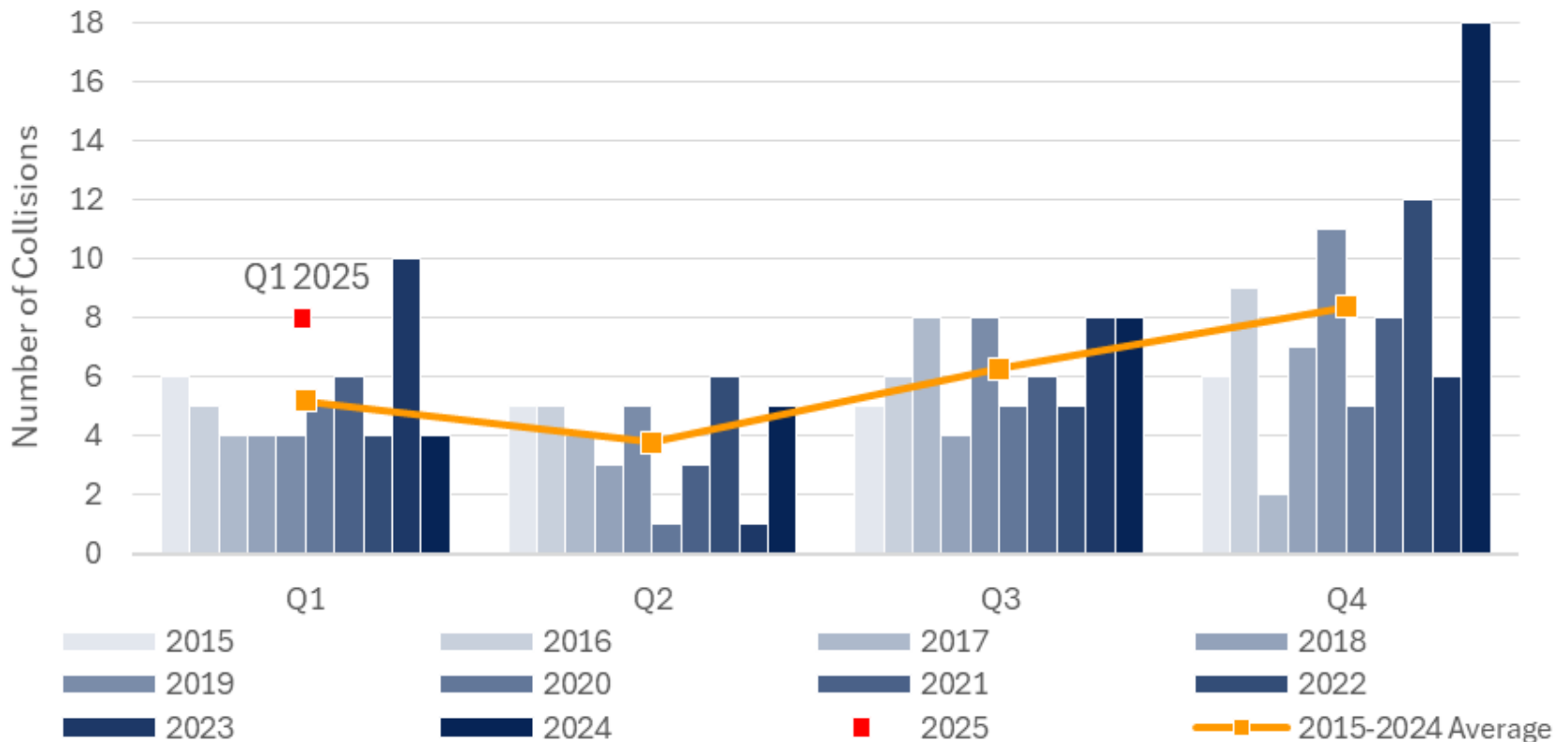
Fatal and Serious Injury Crashes



Source: Preliminary WSDOT Fatal and Serious Injury Collision Data (2015-2024)

Q1 2025 Status Report

Fatal and Serious Injury Collisions by Quarter



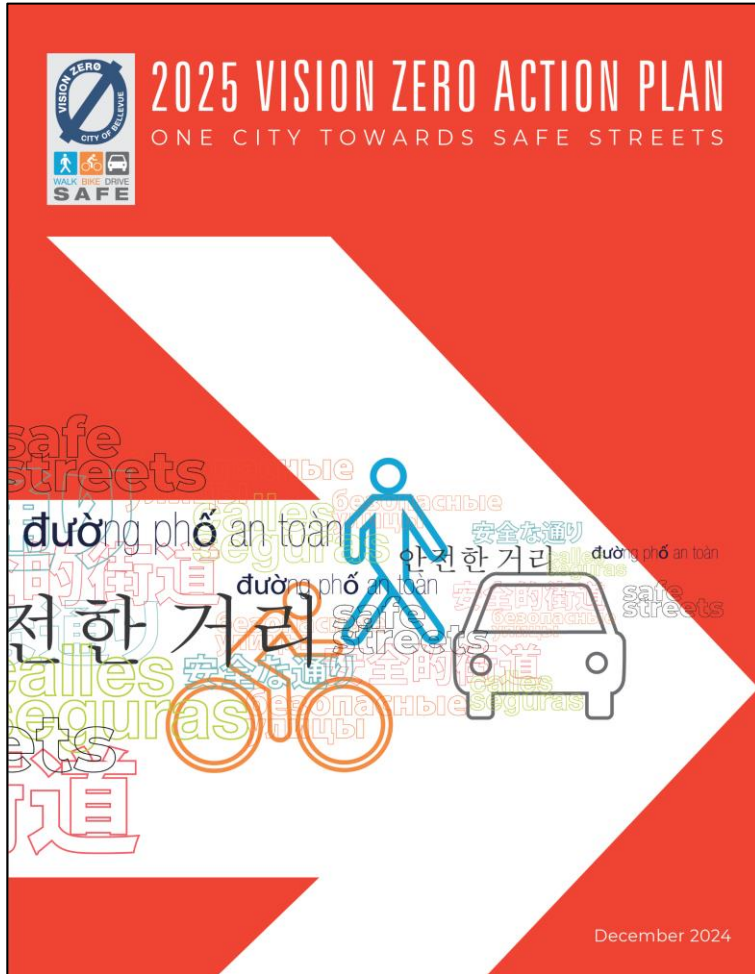
Source: WSDOT Collision Data, 2015-2024; Preliminary WSDOT and WSP Collision Data, January-March 2025

[QuarterlyReport.pdf](#)

Vision Zero Policies, Plans, and Programs

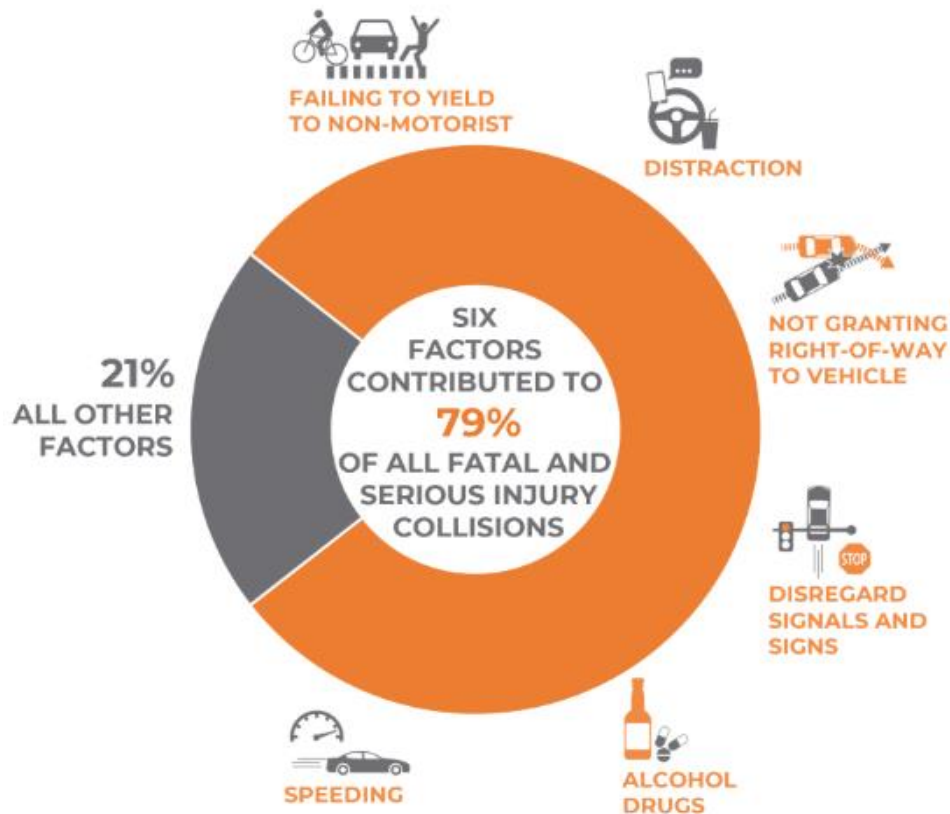


2025 Activities



- Test signal technology for real-time safety interventions (**SMART & SS4A**)
- Conduct two RSAs that include video analytics data collection (**SS4A & WSDOT**)
- Evaluate 30+ MPH arterial roadways to determine recommended target speeds (**SS4A**)
- ★ Assess existing automated speed enforcement camera program to inform potential expansion (**SS4A**)

Why Speed Matters for Bellevue



Source: WSDOT Collision Data (2015-2024)



CRIME

New video shows sports car driver speeding, losing control before fatal Bellevue crash



LOCAL

Bellevue PD shares video of fast and reckless street racing crash



BELLEVUE

Police to crackdown on speeding, street racing in Bellevue

— This comes days after an 18-year-old motorcyclist was killed after colliding with a vehicle at a Bellevue intersection.

Why Speed Safety Cameras

NYC DOT's Speed Cameras Achieved a 94 Percent Reduction in Speeding in Locations Where They Are Installed

Speeding Contributes to One in Four Traffic Deaths; New Report Shows 14% Fewer Traffic Injuries and Deaths at Speed Camera Locations Installed in 2022



Accident Analysis & Prevention
Volume 82, September 2015, Pages 263-269



Safety effects of fixed speed cameras—An empirical Bayes evaluation

Alena Høye

Highlights

- Safety effects of 223 speed cameras were evaluated with control for regression to the mean.
- Speed cameras reduces injury crashes by 22% on the first kilometer downstream of the speed cameras.
- Crash effects decrease with increasing distance from the speed cameras.
- More recent speed cameras had more favorable effects.



Program Overview



School Zone Speed Cameras

- Began in 2009
- Stevenson Elementary & Odle Middle School (NE 8th Street)
- Lake Hills Elementary School (SE 8th Street)
- Sunset Elementary School (West Lake Sammamish Pkwy)

Red Light Cameras

- Began in 2009
- Main St & 148th Ave NE (SB)
- Bel-Red Rd & 148th Ave NE (NB & SB)
- NE 8th St & 112th NE (EB & WB)
- NE 8th St & 116th Ave NE (WB)

School Bus Stop Paddle Cameras

- Pilot program began in 2017
- Cameras now installed on all Bellevue School District buses

2024 State Law Changes



1. Speed cameras may be used in:
 - Hospital speed zones;
 - Public park speed zones;
 - School speed zones;
 - School walk zones;
 - Locations with high crash risk from excessive speeds.
2. Allows civilian citation review
3. Requires safety/equity analysis for camera siting
4. May adopt online ability-to-pay calculator for reduced fines
5. Grants 50% off first fine for aid recipients
6. Four years after installation, 25% of net camera revenue goes to the Cooper Jones Safety Account
7. Increases annual reporting requirements
8. Revenue generated must be directed to traffic safety activities

[Chapter 46.63 RCW: DISPOSITION OF TRAFFIC INFRACTIONS](#)

Program Operations Guide

As a part of the [2025 Vision Zero Action Plan](#), the City of Bellevue is developing the Speed Safety Camera Program Operations Guide in alignment with the new state legislation.


This guide will:

- Incorporate community feedback on the existing and potential expanded program
- Identify locations eligible for new camera installations
- Outline policies and procedures to guide future speed safety camera implementation

- **Summer 2025:** Technical analysis and community engagement begin to identify candidate camera locations.
- **Fall 2025:** Draft of the Speed Safety Camera Program Operations Guide completed, incorporating public input, technical findings, and equity considerations. Preparations begin for initial deployment.
- **Winter 2025:** Finalization of the Operations Guide and planning for future phased implementation.
- **Summer 2026:** Begin deploying new camera sites, pending Council approval.

[Speed Safety Cameras | City of Bellevue](#)

Community Engagement



We are here

Program Development

- Timeframe:
- Goals:
 - Build awareness for program expansion and proven effectiveness
 - Capture public sentiments regarding speeding
 - Measure level of support for speed safety cameras
 - Understand concerns for equity and privacy

Implementation

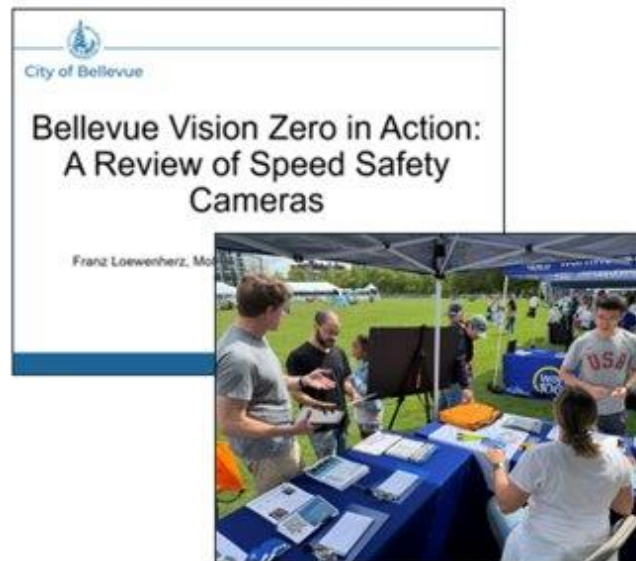
- Timeframe:
- Goals:
 - Ensure driving public is aware of
 - Phase 1-2 camera locations including selection criteria
 - All changes to current enforcement program (e.g., fine structure, program administration)

Program Development Outreach

Project page and flyer published



Tabling events and CBO presentations



Community Panel and Engaging Bellevue surveys



Implementation Outreach

Rationale for site selection

Safety Cameras on High Crash Corridors

Coming soon on SE Division Street and SE 122nd Avenue

What Are Safety Cameras? Safety Cameras are proven safety tools that can reduce dangerous speeding in your neighborhood and save lives. They are mounted along High Crash Corridors and when people driving past them exceed the posted speed limit, they capture photos and video for review by Portland Police.

Why these streets? SE Division and SE 122nd are both High Crash Corridors. People walking along or crossing these streets on foot are twice as likely to be struck by a car than on the average city street. Pedestrians struck by speeding drivers on these roads are unlikely to survive.

Will these cameras issue speeding tickets? Our goal is to reduce speeding and save lives. The cameras will issue warnings for the first 30 days. Thereafter, people can avoid citations by traveling the posted speed limit. Any money received from the tickets pays for the program and safety improvements on the corridor.



DEATH DUE TO SPEED

Source: National Highway Traffic Safety Administration (NHTSA) 2010-2014

What is Vision Zero? The City of Portland has joined cities around the country in embracing Vision Zero – the notion that the death of even one person on our roads is one too many. Vision Zero prevents traffic deaths through smart policy and system design. Learn more by visiting www.VisionZeroPortland.com/SafetyCameras



The Portland Bureau of Transportation fully complies with Title VI of the Civil Rights Act of 1964 and the ADA Title II and related federal and state laws, regulations, and executive orders. For accommodations, requests, and information, call (503) 823-5271, call TTY (503) 823-5288, or use Oregon Relay Services (711).

Notification of implementations



Education campaign with new program procedures

KENMORE AUTOMATED PHOTO ENFORCEMENT (KAPE) PROGRAM



Program Background

The Kenmore Automated Photo Enforcement (KAPE) Program was launched in Spring of 2013 by the Public Works Engineering Department in partnership with the Kenmore Police Department. Kenmore City Council included automated photo enforcement as part of the [Financial Sustainability Plan](#), and photo enforcement was a key safety recommendation of the 2014 Pedestrian and Bicycle Safety Task Force.

Sites for photo enforcement are evaluated based on their potential safety benefit. Revenue from fines issued by the program will support the City's pavement preservation and traffic safety programs. This approach ensures road upkeep costs are shared with drivers who travel through Kenmore, not just Kenmore residents, and that the cost of providing a safe driving environment is shared with those who are contributing to the risk.

Current Status:

Speed Safety Cameras Speed safety cameras are active at the following locations:

- Arrowhead Elementary School Zone on Juanita Dr.
- Kenmore Elementary School Zone on 73rd Av.

Current Timeline:

- **KAPE Program Council Update June 6th**
A Council update on the performance of the KAPE program is scheduled for the June 6th Council meeting. Staff will report to Council on program performance for the 2024 calendar year and present recommendations for expanding the



Information

Franz Loewenherz
Mobility Planning and Solutions Manager
FLoewenherz@bellevuewa.gov
(425) 452-4077

Project Webpage: [Speed Safety Cameras | City of Bellevue](#)