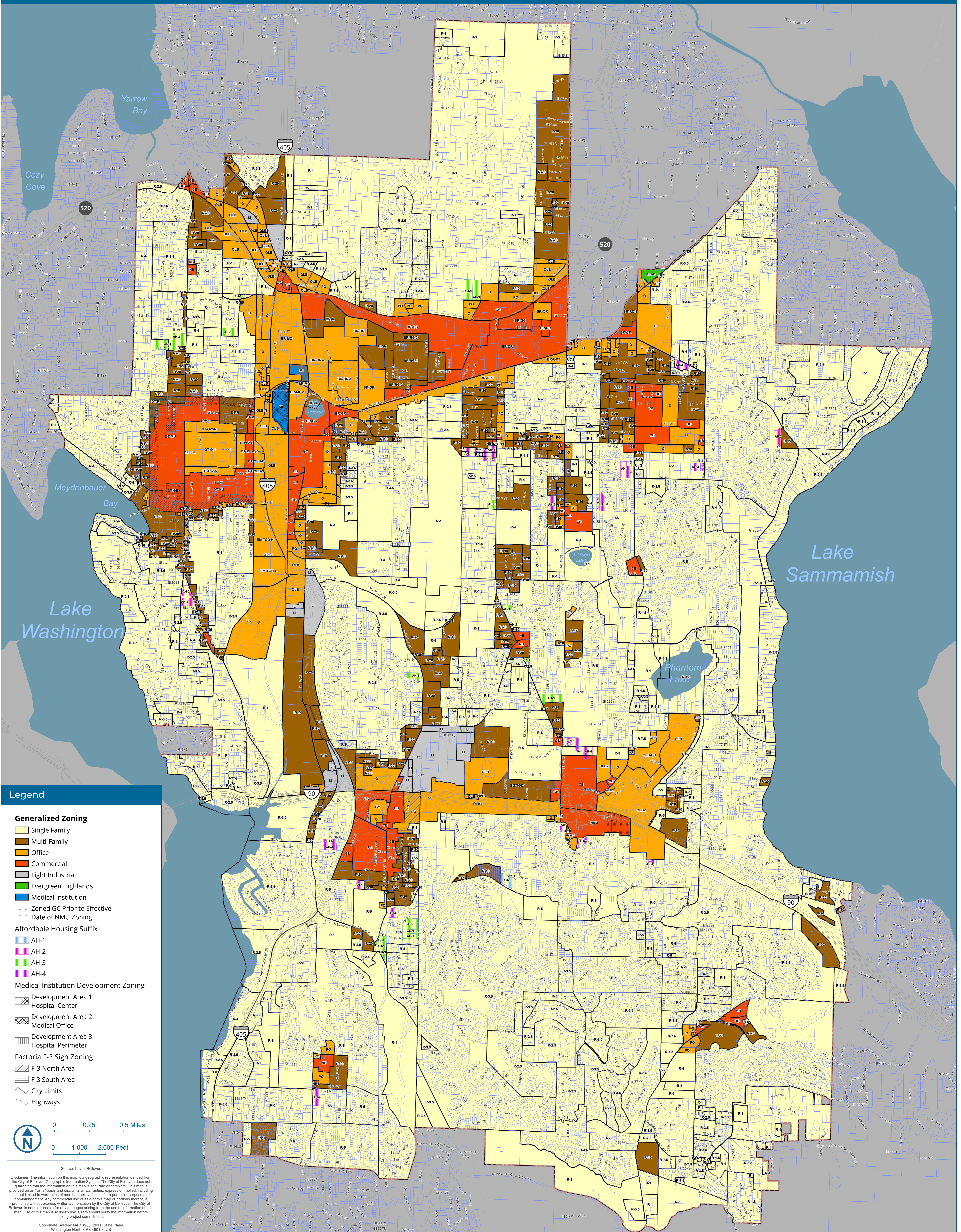


Generalized Zoning



Legend

Generalized Zoning

- Single Family
- Multi-Family
- Office
- Commercial
- Light Industrial
- Evergreen Highlands
- Medical Institution
- Zoned GC Prior to Effective Date of NMU Zoning
- Affordable Housing Suffix
- AH-1
- AH-2
- AH-3
- AH-4

Medical Institution Development Zoning

- Development Area 1
- Hospital Center
- Development Area 2
- Medical Office
- Development Area 3
- Hospital Perimeter

Factory F-3 Sign Zoning

- F-3 North Area
- F-3 South Area
- City Limits
- Highways

0 0.25 0.5 Miles
0 1,000 2,000 Feet

Source: City of Bellevue

Disclaimer: The information on this map is a geographic representation derived from the City of Bellevue Geographic Information System. The City of Bellevue does not guarantee that the information on this map is accurate or complete. This map is provided on an "as is" basis and disclaims all warranties, express or implied, including but not limited to warranties of merchantability, fitness for a particular purpose and non-infringement. Any commercial use or sale of this map or portions thereof, is prohibited without express written authorization by the City of Bellevue. The City of Bellevue is not responsible for any damages arising from the use of information on this map. Use of this map is at user's risk. Users should verify the information before making project commitments.

Coordinate System: NAD 1983 (2011) State Plane
Washington North FIPS 4801 FTLB