



New Neighborhood Park in Eastgate



Please join us for Community Meeting #1:

South Bellevue Community Center:

Thursday, Jan. 16 | 6:30-8 p.m.

14509 SE Newport Way | Bellevue, WA 98006

We will discuss the upcoming planning process, park system needs and we want to hear what your preferences are for your new park.

For additional information, please go to the Eastgate Neighborhood Park project website:

BellevueWA.gov/eastgate-park-plan

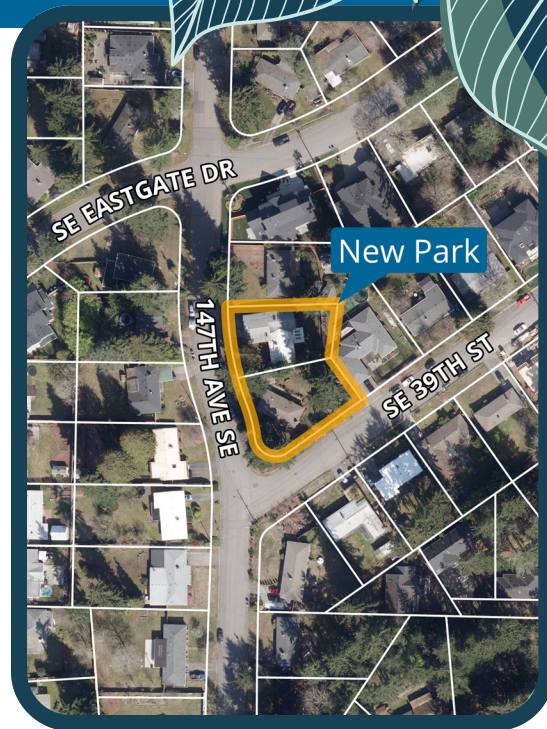


Help us **Explore** possibilities for **Your** park.

For more information or to provide comments contact:

Zarrarian Smith, Project Manager

425-452-4883 | zsmith@bellevuewa.gov





Parks & Community Services
450 110th Avenue NE
Bellevue WA 98004

PRSR STD
U.S. POSTAGE
PAID
PERMIT #420
BELLEVUE, WA

New Neighborhood Park in Eastgate

Community Meeting #1

**Join us to learn and participate
in the park planning!**

Information
정보 情報
सूचना 資料
425-452-6800
సమాచారం Thông Tin
Información معلومات
اطلاعات Информация



For alternate formats, interpreters,
or reasonable modification requests
please phone at least 48 hours in advance
425-452-4883 (voice) or email zsmith@bellevuewa.gov. For complaints regarding
modifications, contact the City of Bellevue
ADA, Title VI, and Equal Opportunity
Officer at ADATitleVI@bellevuewa.gov.