



Crossroads Park

16140 NE 8th St, Bellevue, WA



Barbecue/Grill



Bollard



Bus Stop



Drinking Fountain



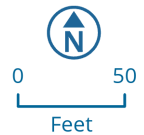
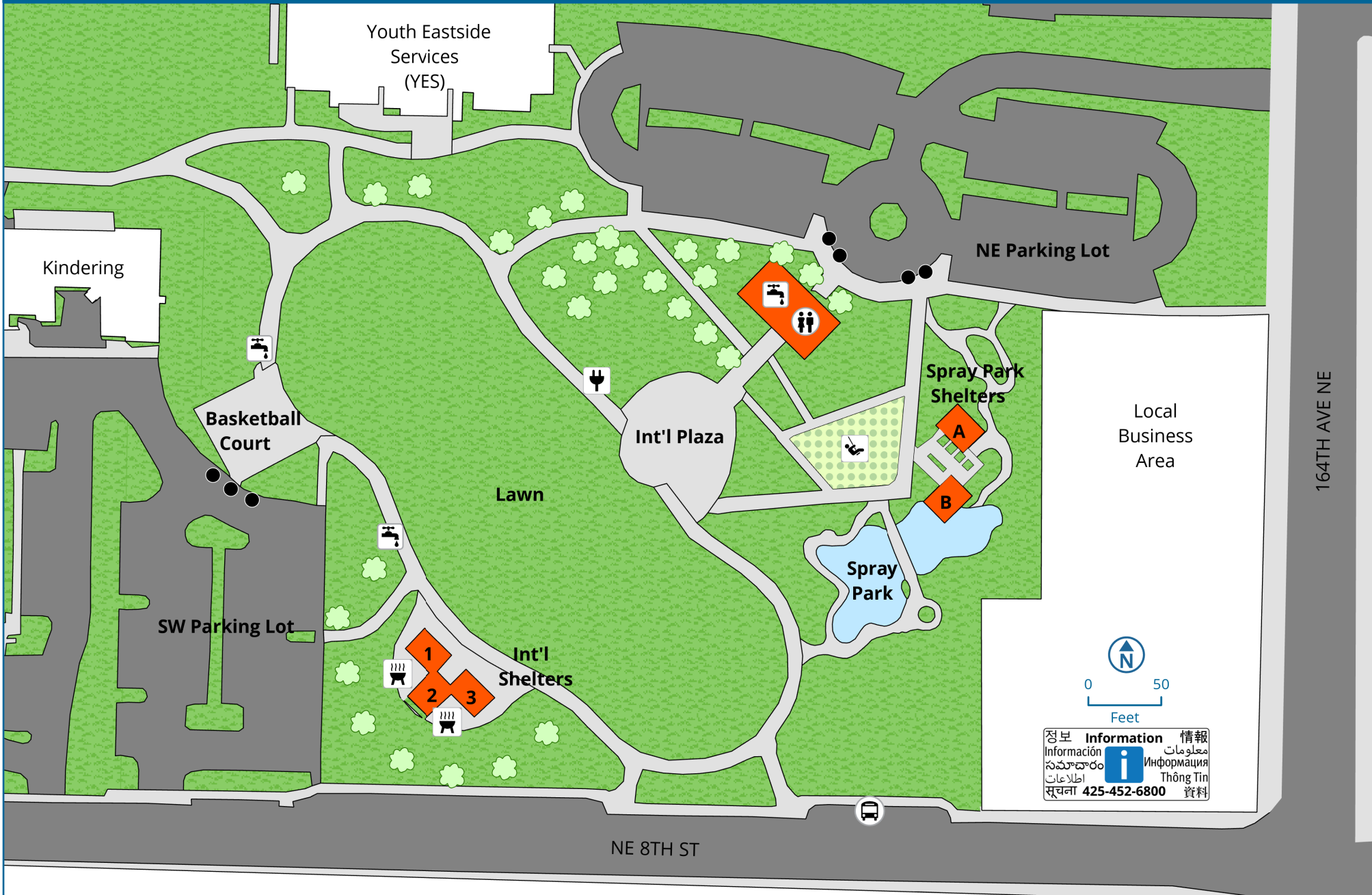
Electricity



Play Structure



Restrooms



정보 Information 情報
 Información ८ معلومات
 సమాచారం ८
 اطلاعات ८
 सूचना ८
 425-452-6800 資料



Crossroads Park

16140 NE 8th St, Bellevue, WA



Barbecue/Grill



Bollard



Drinking Fountain



Electricity



Play Structure



Restrooms



Local Business Area

정보 Information 情報
 Información معلومات
 సమాచారం
 اطلاعات
 सूचना 425-452-6800 資料



Bellevue Parks &
Community Services

Crossroads Park

Parking Information & Locations

- The **SW Parking Lot** is located at **16140 NE 8th St**, which is closest to Crossroads International Shelters 1-3.
- The **NE Parking Lot** is located at **999 164th Ave NE**, which is closest to Spray Park Shelters A and B.
- Parking is first-come, first-served and cannot be reserved.
- Carpooling and the use of public transportation or a rideshare company are encouraged.
- Please do not park:
 - ✓ In the marked spaces reserved for local businesses
 - ✓ In fire lanes
 - ✓ Along the driving lanes
 - ✓ At the Crossroads Community Center and Bellevue Youth Theatre as their parking lot is for their visitors, program attendees and guests.
 - ✓ At the Crossroads Bellevue Shopping Center, per shopping center management, violators will be towed.
 - ✓ In the parking lots of businesses across from or near the park.
- If you are planning a public or large private event, a parking plan may be required.