



Neighborhood News

November 2024

Help the city serve and connect with diverse communities

The City of Bellevue is welcoming applications from those interested in joining the Bellevue Diversity Advisory Network, which supports and guides the city's relationships with diverse communities in Bellevue. The application is available in multiple languages and can be completed online (<https://forms.office.com/g/9yP6SzT3HX>). You can also submit the form by email or print and mail it. The deadline for submission is **Sunday, Nov. 10 at 11:59 p.m.**

The city manager appoints BDAN members to provide important counsel to them and city departments. The panel shares feedback and insight on issues relevant to communities in Bellevue to increase equity, access and inclusion.

"The City of Bellevue relies on the members of BDAN to give valuable insights into the needs of the communities they represent," City Manager Diane Carlson noted. "Their involvement informs our internal decision-making, helps shape how programs and services are delivered and

contributes to building a strong bridge between the city and our diverse communities."

Applicants can learn more by attending either of two virtual information sessions. Attending an information session is not required to apply.

- Thursday, Oct. 24, 6:30-8 p.m.
- Wednesday, Oct. 30, 11:30 a.m.-1 p.m.

More information at BellevueWA.gov/BDAN.

Eastside Virtual Job Fair scheduled for Nov. 14

The 2024 Eastside Virtual Job Fair is an opportunity for job seekers to meet with employers from a variety of industries to learn about positions ranging from entry-level to management roles.

Employers can connect with job seekers to find the talent needed for their open positions. The job fair will be held on Nov. 14, 10 a.m.-1 p.m.

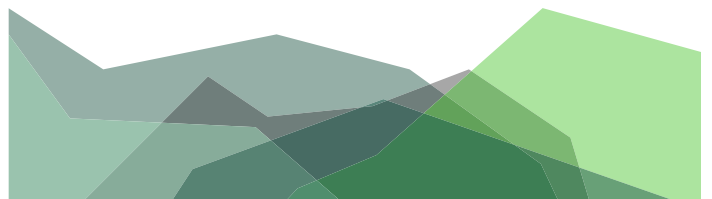
Job seekers can register at: app.premiervirtual.com/events/d5b532b6-1a74-4829-9888-4bc1f0d5ce53/2024-eastside-virtual-job-fair/attendee

Employers can register at: app.premiervirtual.com/events/d5b532b6-1a74-4829-9888-4bc1f0d5ce53/2024-eastside-virtual-job-fair/organization



For alternate formats, interpreters, or reasonable modification requests please phone at least 48 hours in advance 425-452-2735 (voice) or email mheilman@bellevuewa.gov. For complaints regarding modifications, contact the City of Bellevue ADA, Title VI, and Equal Opportunity Officer at ADATitleVI@bellevuewa.gov.

Subscribe to Neighborhood News electronically:
BellevueWA.gov/neighborhood-news





Attend an Ideas Fair! Planning for the future of Newport and Crossroads

Neighborhood area planning is underway for Crossroads and Newport neighborhoods and the city is looking to hear from residents in those areas. Neighborhood area plans are foundational documents that inform future development by providing guidance to city staff and private developers.

This planning effort seeks to enhance livability and is focused on the following topics:

- **Neighborhood identity:** Define the unique aspects of each neighborhood and develop strategies to highlight them.
- **Enhanced community gathering spaces:** Define and strengthen community hubs and “third places” that foster social interaction and connectivity.
- **Urban design framework:** Establish guidance on neighborhood design, focusing on opportunities to activate spaces and improve the look and feel of public spaces.
- **Neighborhood connectivity:** Make it safe and convenient for people to get around their neighborhood, connect to transit and use other modes of transportation.
- **Public realm improvements:** Identify needs for potential future improvements, such as streets and trails, through community engagement.

Community members are invited to provide input on these topics at upcoming in-person **Ideas Fairs**, where you can visit a variety of stations and talk to the planning team, explore data and share ideas.

Crossroads Ideas Fair

Thursday, Nov. 14, 5:30-8 p.m.
Crossroads Community Center,
16000 NE 10th St.

Register: [Crossroads-Idea-Fair.eventbrite.com](https://www.eventbrite.com/e/crossroads-idea-fair)

Newport Ideas Fair

Wednesday, Nov. 20, 5:30-8 p.m.
Newport Swim and Tennis Club,
5464 119th Ave. SE

Register: [GN-Newport-Ideas-Fair.eventbrite.com](https://www.eventbrite.com/e/gn-newport-ideas-fair)

These are drop-in events and people can come at any time and stay as long as they want. The planning team welcomes feedback from people of all ages and backgrounds. Children and Adults are welcome, translation and interpretation are available on request. Light refreshments will be provided. Registration is not required but encouraged.

To learn more about the project, sign-up for updates or provide input please visit the online engagement hubs.

Crossroads: engagingbellevue.com/great-neighborhoods-crossroads

Newport: engagingbellevue.com/great-neighborhoods-newport

David Bowling to be keynote speaker for 2024 Bellevue Essentials Graduation

On Thursday, Dec. 12, 7-9 p.m., the City of Bellevue will graduate its twelfth cohort of 35 emerging leaders from its civic engagement program, Bellevue Essentials. The graduation and reception are open to the community and will take place at Bellevue City Hall, 450 110th Ave. NE, Bellevue.

The graduation event keynote speaker will be David Bowling, CEO Eastside Community Development Fund. David's roots are deep in Bellevue through his 17 years as Executive Director at Porchlight (formerly Congregations for the Homeless), as well as many years as a Bellevue resident.

David currently serves as CEO of the Eastside Community Development Fund (ECDF), a nonprofit organization whose mission is working to address our community's social needs through engaging, connecting, and mobilizing businesses and civic organizations through funding, convening, and advocacy. David works to bring together different sectors of the community to create innovative solutions to complex social challenges, including homelessness and affordable housing.

David is a graduate of the inaugural Bellevue Essentials Class of 2013, and then graduated from Leadership Eastside, which gives him a true understanding of the importance of local leadership development programs. He will help set the stage for our Bellevue Essentials graduates to move into the next phase of engagement, from learning to action.

A speaker from the 2024 graduating class will also speak about their Bellevue Essentials experience. Graduation certificates will be presented by Mayor Lynne Robinson and City Manager Diane Carlson. The ceremony is followed by a dessert reception.

The graduation event is open to the public and provides an opportunity to learn more about Bellevue Essentials, the city's introductory program to civic engagement. The next class will begin in September 2025, with applications available May 1, 2025.

For more information on future participation in the Bellevue Essentials program, visit Bellevue Essentials (BellevueWA.gov/city-government/departments/community-development/neighborhoods/classes-and-events/bellevue-essentials) or contact Julie Ellenhorn at 425-452-5372 or jellenhorn@bellevuewa.gov.

Bellevue Youth Theatre presents sensory-friendly performances

Bellevue Youth Theatre introduces sensory friendly performances, designed to make theatre and the performing arts more accessible for all community members.

Sensory-friendly Performances:

The Mummy's Revenge | Nov. 2, 2 p.m.

Finding Nemo | Nov. 23, 7 p.m.

'Twas the Night before Christmas
Dec. 14, 2 p.m.

Join us for a relaxed viewing experience! Designed specifically for audience members with sensory sensitivities, these performances will feature increased lighting in the audience, lower sound volumes, reduced or removed fog effects and the permitted use of digital devices.

With smaller audience sizes, a designated quiet area and a special actor introduction to the show, the goal is to make everyone feel comfortable enjoying the theatre in whatever way feels best to them.

Complimentary sensory guides and fidgets are available in the lobby.

For tickets, call 425-452-7155 or buy online BellevueWA.gov/byt.

16051 NE 10th St., Bellevue, WA 98008





Bellevue Farmers Market

1717 Bellevue Way NE, Bellevue

Follow us on Instagram to learn more about our holiday vendors: [@bellevuefarmersmrkt](#) or on our website: [bellevuefarmersmarket.org](#)

Holiday Market

Saturday, Nov. 23, 10 a.m.-2 p.m.

Enjoy the cool air of the fall season and do all your holiday shopping for the dinner table and your friends and family at Bellevue Farmers Market!

Browse our expanded market featuring 45 vendors offering farm fresh produce and giftable goods, from small-batch food and beverage products to handcrafted ceramics, candles, cutting boards and kitchenware, all locally made. There will be gifts for your favorite furry dog and cat. We'll even have a pop-up photo studio with mini-sessions for your pup!

Enjoy breakfast, lunch and snack food options at several vendors making their first appearances at the market while enjoying a soundtrack of captivating rhythms and melodies from The Phinney Ridge Steel Band!

Holiday Market

Saturday, Dec. 21, 10 a.m.-2 p.m.

Stroll the holiday edition of Bellevue Farmers Market with a warm cup of coffee or hot cocoa and the tunes of the Bellevue Presbyterian handbell choir!

Shop our 45 vendors offering farm fresh produce and giftable goods for the whole family, including the furry ones. In addition to small-batch, artisan food and beverage products, you'll find holiday wreaths and garlands, locally made ceramics, candles, cutting boards and kitchenware, plus all-natural dog treats and cozy cat beds!

Grab some breakfast, lunch or a sweet snack from several food vendors that will be making their market debut, and the favorites you've missed from the summer season.



Bellevue Downtown Ice Rink returns!

The Bellevue Downtown Association (BDA) announced that the region's largest open-air ice rink will return to Bellevue Downtown Park, Nov. 15-Jan. 12.

In its 27th year, the Ice Rink, presented by Symetra, offers over 9,000 square feet of real ice in a fully covered, open-air venue bringing festive fun for skaters of all ages.

Advance tickets and season passes are now available at [bellevueicerink.com](#). Walk-up tickets will be limited, so visitors are encouraged to plan ahead.

With free skate lessons, courtesy of Microsoft, themed skate nights and on-site concessions, there's something for everyone!

"Since its inception, the Bellevue Downtown Ice Rink has become a cherished holiday tradition in the heart of the city, just steps away from local restaurants and retail," said BDA President Patrick Bannon. "We strive to bring a vibrant gathering place that fosters holiday spirit and joy for friends, families, and visitors."

Beyond the rink, Downtown Bellevue will be bustling with other winter activities, from the dazzling Garden d'Lights at Bellevue Botanical Garden to the iconic Snowflake Lane at The Bellevue Collection.

Visitors can also enjoy some edible fun at KidsQuest Children's Museum's Gingerbread Workshops.



Holiday Cooking: Stay focused in your kitchen

The holiday season often means preparing large meals for friends and family, which can turn your kitchen into a hub of activity. Cooking is the leading cause of home fires, particularly during the holidays.

Here's how to stay safe:

Never leave cooking unattended. Whether you're frying, grilling, boiling or baking, always stay in the kitchen while food is cooking. If you need to step away, turn off the stove.

Keep flammable objects away from the stovetop. Dish towels, oven mitts, wooden utensils and packing should be kept at a safe distance from heat sources.

Use a timer to keep track of cooking times, especially if you're juggling multiple dishes. It's easy to get distracted during holiday festivities and a timer can help prevent food from burning.

Know and practice your home escape plans. Make sure everyone in your household knows what to do if a fire occurs in your home.

Be cautious with deep-frying turkeys. Deep fryers can be dangerous if not used correctly. Always fry outdoors, away from your home, and ensure the turkey is fully thawed before frying to avoid dangerous flare-ups.

Keep fire safety at the forefront of your holiday preparations so that you can enjoy a safe and festive winter!



Bellevue launches 2025-2030 Sustainable Bellevue Environmental Stewardship Plan Update

Evidence of climate change is all around us in 2024. In Bellevue, we've seen worsening heatwaves and smokier skies, hotter streams and swings between downpour and drought. Planning for climate change with efficient buildings, resilient infrastructure, accessible transportation systems and healthy tree canopy is more important now than ever.

Bellevue is striving to meet this moment. Our Sustainable Bellevue Environmental Stewardship Plan, adopted in 2020, is a guiding document of 78 strategies and actions in five focus areas spanning climate change, energy, mobility and land use, waste management, natural systems, and municipal operations. Over the past five years, implementing these actions has taken us closer to reaching our overarching targets that commit the city to act boldly and aggressively to ensure that Bellevue is a healthy, livable, and sustainable community for generations to come.

As we look to 2025, the Environmental Stewardship team is excited to launch the 2025-2030 Sustainable Bellevue ESI Plan Update this November. Guided by our new greenhouse gas emissions reduction target of 95% by 2050 in the Comprehensive Plan, the city will focus on updating the Plan's strategies and actions to meet our 2030 goals and beyond.

Building a livable future takes everyone. The voices of our community are critical to shaping

Continued from previous page

the sustainable, inclusive, resilient Bellevue we will become in 2030 and future decades. The Environmental Stewardship team will be kicking off our engagement with a Town Hall on Wednesday, December 4 from 5:30-7:00 p.m. All community members are welcome.

If you can't make it to our Town Hall, stay tuned for many more events and pop-ups around Bellevue in the coming months. To make sure you never miss an update, subscribe to our email newsletter.

To learn more and subscribe, visit. BellevueWA.gov/Environment.

We're excited to build a livable future for all with our community.

Medicare Open Enrollment: Getting help

Medicare open enrollment is Oct. 15-Dec. 7. This is the one time of the year, people already on Medicare can change plans for coverage starting in 2025.

Whether you are new to Medicare or considering changing plans, it's good to begin reviewing options early as there are changes every year.

Fortunately, there are many helpful resources, including [medicare.gov](https://www.medicare.gov), which provides valuable information and a tool for comparing different plans. Medicare staff can also help you compare plans and are available 24/7. Call 1-800-MEDICARE (1-800-633-4227) for help.

Another great resource is the Statewide Health Insurance Benefits Advisors (SHIBA), a volunteer program through the Washington State Office of the Insurance Commissioner. SHIBA volunteers help people with their Medicare questions and options, providing free and unbiased information. Solid Ground and CISC are your local SHIBA sponsors for King County.

On Saturday, Nov. 2, 2024, 2-4 p.m., you can join a free in-person SHIBA presentation on Medicare's Open Enrollment, at the Bellevue Library, 1111 110th Ave NE.



Topics will include:

- What you can do during Open Enrollment
- Choosing and Changing plans
- What Medigap Plans are available
- How you can get help paying for Medicare

Schedule an appointment with a SHIBA advisor at Bellevue's Mini City Hall, located at Crossroads Shopping Center, 15600 NE 8th St., south entrance, near Party City. Appointments are required. Email minich@bellevuewa.gov or call **425-452-2800**

- First and second Tuesday of every month, 1-5 p.m.
- Third Tuesday of every month, noon-4 p.m.
- Fourth Monday of every month, noon-4 p.m.

Other in-person locations for appointments are also available! Check Solid Ground's website for other locations: solid-ground.org/get-help/medicare-info/

You can also contact SHIBA in King County for phone consultations throughout the year. Contact Solid Ground's SHIBA at 206.753.4806 or shiba@solid-ground.org.

If you need help in Chinese or Vietnamese, contact CISC at 206-957-8539.

One week left to help shape new Hazard Mitigation Plan

Our online open house for the new Hazard Mitigation Plan is open until November 6! The plan will help us identify existing risks around natural hazards, like severe weather, floods and earthquakes, and develop actions to reduce those risks. Visit EngagingBellevue.com/hmp to share your concerns about and experiences with natural hazards.

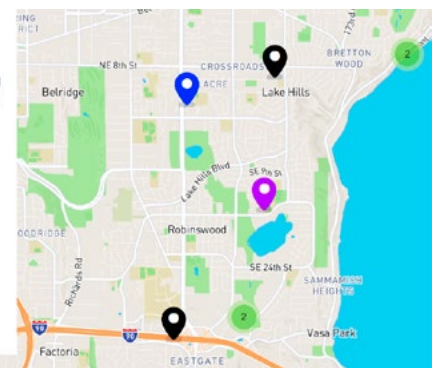
Natural Hazards Mapping

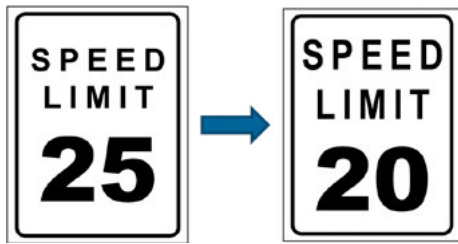
We're interested in seeing what natural hazards you think will impact areas around Bellevue. Drag and drop a pin from the list to where you are concerned about the impact of that hazard. Then, answer the optional questions to let us know more about your concerns.

If you need assistance with using the mapping tool or would like to submit information another way, please email OEM@bellevuewa.gov



BY ISTANBU





Lower speed limit coming to local streets

Most local streets in Bellevue will see their speed limit reduced from 25 mph to 20 mph at the end of 2025 or in 2026. The City Council passed an ordinance for this change at their Oct. 22 meeting after eight months of community outreach by city staff and after the successful testing in several neighborhoods. This change was proposed to improve safety on local streets, which supports Vision Zero, an initiative that aims to eliminate fatal and serious injury traffic crashes on city streets by 2030. It also represents a culture shift for residents in how speeds are managed on local streets: **Safety starts on your street.**

The new speed limit will take effect on most local streets, which are streets designed primarily to provide access within neighborhoods and carry local traffic to collector arterials. The speed limit on local streets has been reduced to 20 mph already in three areas in Bellevue—Surrey Downs, the East Bellevue Greenway and around Tye Middle School—and evaluation showed that this change reduced high-end speeding.

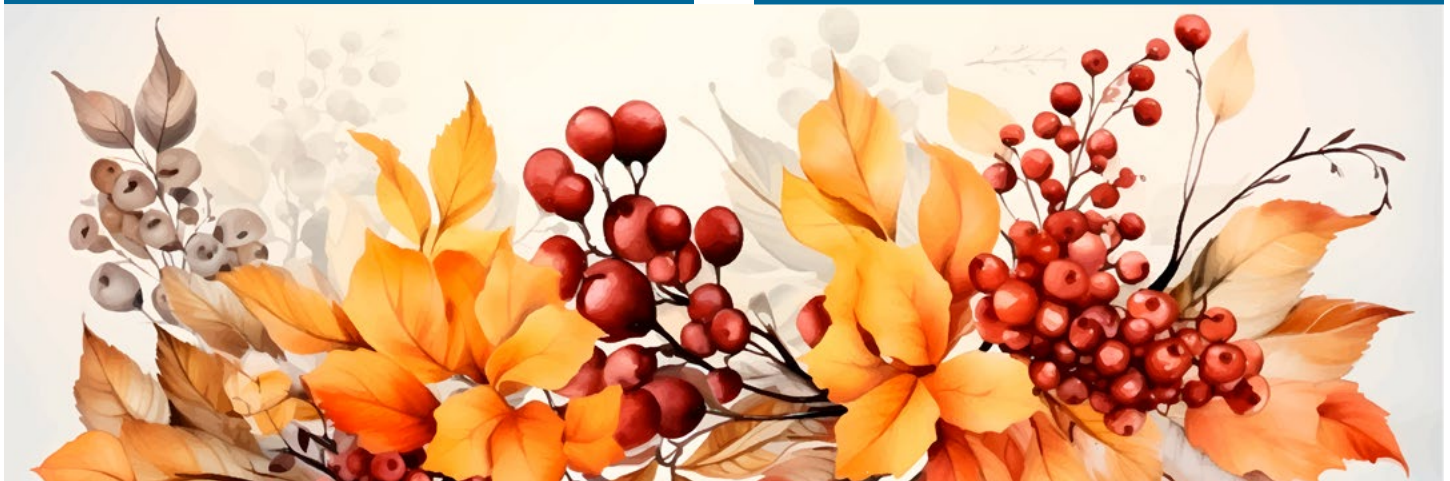
Stay tuned for more information on the change! Additional outreach will be done before the new speed limit is implemented.

For more information, visit BellevueWA.gov/20-mph.

City staff prepared for the winter weather

Approximately 100 staff from across the city participated in training at the end of October to prepare for the upcoming winter season. They discussed best techniques for plow and sander operations, practiced putting on tire chains, reviewed dispatch procedures, and more. We ensure staff are fully trained and supplies are stockpiled by the end of October to be able to respond to snow and ice.

To learn more about Bellevue's winter response — and how you can get prepared — visit BellevueWA.gov/winter.



Boards and Commissions Meetings

Stay updated on meetings and cancellations:
BellevueWA.gov

All meetings are conducted at City Hall unless otherwise noted. Agendas are subject to change. If a holiday occurs on a Monday, please check the updated calendar. Agendas can be downloaded from the city's web pages listed below. Meeting alerts are available through subscribing to the City's Special Meeting Notices page.
BellevueWA.gov/special-meetings

Bellevue Diversity Advisory Network
 (6 p.m., Bellevue City Hall) Last Tuesday of each month
BellevueWA.gov/city-government/bdan

Arts Commission (4:30 p.m., 1E-113)
 First Wednesday of each month
BellevueWA.gov/arts-commission

Environmental Services Commission
 (6:30 p.m., 1E-113) First Thursday of each month
BellevueWA.gov/environmental-commission

Planning Commission (6:30 p.m., 1E-113)
 Second and fourth Wednesday of each month
BellevueWA.gov/cdplanning-commission

Transportation Commission (6:30 p.m., 1E-113)
 Second Thursday of each month with fourth Thursday as needed.
BellevueWA.gov/planning-transportation-commission

Human Services Commission (6 p.m., 1E-113)
 First and third Monday of each month
BellevueWA.gov/human-services-commission

LEOFF 1 Disability Board (6 p.m., Room 1E-118)
 First Wednesday of each month
BellevueWA.gov/leoff-1-disability-board

Library Board (5p.m., Lake Hills, Bellevue or Newport Way Library) Second Wednesday of each month.
BellevueWA.gov/library-board

Parks & Community Services Board
 (6 p.m., 1E-113) Third Wednesday of each month
BellevueWA.gov/pcs-services-board

The Bellevue Network on Aging (BNOA)
 8:30 a.m., North Bellevue Community Center 4063 148th Ave NE, Bellevue) First Thursday of each month
BellevueWA.gov/bnoa

Special Events Committee (8:30 a.m., 1E-112)
 Second Thursday of each month
BellevueWA.gov/events

Youth Link Board (6 p.m., 1E-120) Second and fourth Wednesday of each month
BellevueWA.gov/youth-link-board

Bellevue's Neighborhood Services Division offers a variety of programs and partnerships for residents and community members.

To learn more about involvement opportunities and programs to enhance neighborhoods, please visit our website at: BellevueWA.gov/neighborhoods or call 425-452-6836 or email: neighborhoodoutreach@bellevuewa.gov.

To subscribe to this newsletter, visit: BellevueWA.gov/neighborhood-news

City Council BellevueWA.gov/Legistar.com/Calendar.aspx

Day	Scheduled Meeting(s)	Location	Public Comment Opportunity
First four Tuesdays of each Month, except August and December	6 p.m. Regular Meeting	Council Chamber Bellevue TV channel 21 and BT YouTube channel youtube.com/user/BellevueWashington	Emails to Council are accepted at council@bellevuewa.gov at any time. Further opportunities for public comment are published on each Council agenda and can be found at bellevue.legistar.com/calendar.aspx
August – first Tuesday only			
December – first and second Tuesday only			