

CITY OF BELLEVUE NATURAL HAZARD MITIGATION PLAN

Kickoff Meeting
June 5, 2024

1



Who is here today?



2

Today's Discussion


- 01 Plan Purpose
- 02 Planning Process
- 03 Steering Committee
- 04 Next Steps and Q&A




3

Why are you here?

- Bellevue residents and jurisdictions are at risk from natural hazards
- The City is preparing a Hazard Mitigation Plan
- All City departments are stakeholders in this plan
- You have been identified as the representative from your department



In January of 2022, a landslide and water main break destroyed a home in Bellevue
Source: Seattle Times



4



Project Information

- The planning process is being funded by a grant from FEMA through the WA Emergency Management Division
- The City of Bellevue has procured a technical support contractor (Perteet and Black & Veatch)
- The planning process is being co-led by Bellevue Transportation Department, Office of Emergency Management, and Utilities Department.
- The project is co-managed by **Kristi Oosterveen** and **Ellen Montanana**.



5



Planning Purpose

6



What is Mitigation?

Five phases of emergency management



Mitigation is “*sustained action taken to reduce or eliminate long-term risk to life and property.*”



7



Examples of Mitigation Strategies

- Seismic retrofit of buildings and bridges
- Redundancy of water systems and fuel systems
- Tree planting to reduce heat in urban cores
- Fuels reduction to reduce wildfire severity
- Education programs to be better informed of risks
- Policies – building codes and zoning
- Generators to ensure facilities remain functional
- Elevating homes to protect them from flooding



8



What is the Disaster Mitigation Act (DMA)?

- In 2000, Congress signed the DMA which emphasized pre-disaster mitigation.
- The DMA focused on proactive actions that reduce vulnerability to natural hazards and recognized hazard mitigation plans as the foundation for reducing risk.
- The DMA created hazard mitigation grant programs, which now include Building Resilient Infrastructure and Communities (BRIC), Hazard Mitigation Grant Program (HMGP), Flood Mitigation Assistance (FMA) program, High Hazard Potential Dam (HHDP) and others.



9



What is the Disaster Mitigation Act (DMA)?

Except for grants awarded to prepare HMPs, a community must have **a FEMA approved HMP** to be eligible for the mitigation grants.



For 13 days in December/ January of 2022 crews across the city's Transportation, Utilities, Parks and Facilities departments were in emergency weather response and support roles related to the ongoing snow event.
Source: City of Bellevue

No plan = No \$\$\$



10



What is a Hazard Mitigation Plan?

- An HMP forms the foundation of a community's long-term strategy to reduce disaster losses and break the cycle of disaster damage, reconstruction and repetitive damage.
- HMPs are investment strategies that communities develop through a planning process to identify hazards, assess risks and vulnerabilities, and develop mitigation strategies that can be funded using a wide range of resources.



Local Mitigation Planning Policy Guide

FP 206-21-0002

Released April 19, 2022, Effective April 19, 2023

OMB Collection #1660-0062



FEMA



11



Benefits of Hazard Mitigation Plans

- Establish eligibility for grant funds (\$\$\$ for projects)
- Improve understanding of risks and vulnerabilities in your community
- Results in more effective risk reduction projects
- Reduce negative impact of natural hazards – mitigation actions save lives, reduce displacement, and speed recovery
- Encourage sustainable actions – builds strong, resilient, and self-sufficient communities
- Foster collaboration between local jurisdictions and residents



12



Response to the DMA in Bellevue

- Initial HMP was developed in 2007 as an annex to the 2004 King County HMP. The project was funded by a \$20,000 grant from FEMA.
- The HMP annex was adopted by City Council on August 4, 2008 (Res. No. 7773)
- City Council approved an amendment to the annex on August 9, 2009 (Res. No. 7957).
- The City did not participate in or annex into the King County regional process in 2015, or 2020.



13



Response to the DMA in Bellevue, Cont.

- In 2021, the City applied for a FEMA mitigation grant for \$190,000 to prepare a city-specific HMP.
- Benefits of a city-specific plan:
 - The plan is tailored for your needs and specific to your city
 - A city-specific planning process takes a more thorough look at hazard effects within city limits
 - The planning process includes a representative from each city department, which increases city collaboration and participation
- Cons: Reduced county-wide collaboration, must conduct entire planning process on your own.



14



Response to the DMA in Bellevue, Cont.

King County Regional Hazard Mitigation Plan (2020) Risk and Probability Summary:

Community Name	Earthquake		Flood		Landslide		Weather		Volcano		Wildfire	
	Prob	Risk	Prob	Risk	Prob	Risk	Prob	Risk	Prob	Risk	Prob	Risk
Auburn	Yellow	Red	Red	Yellow	Yellow	Yellow	Red	Yellow	Blue	Red	Blue	Blue
Beaux Arts Village	Yellow	Yellow	Blue	Blue	Blue	Blue	Red	Yellow	Blue	Blue	Yellow	Yellow
Bellevue	Yellow	Red	Yellow	Blue	Blue	Blue	Red	Blue	Blue	Blue	Blue	Blue

(High, Medium, or Low)



15



New Planning Process Required

- Due to the length of time between planning efforts, FEMA recommended the City consider this to be a **new plan**.
- Due to the age of the previous plan (15 years), we would be following a “new plan” planning process regardless.



In December 2023, several roads in Bellevue were closed after a heavy rain event.
Source: City of Bellevue



16



Planning Process

17



Provisions of the DMA

- The DMA specifies required plan components. Plans must:
 - Provide opportunity for stakeholders and the public to be involved
 - Fully describe each hazard of concern and summarize the community's vulnerability to the hazard and potential impacts
 - Review effects of climate change and future conditions
 - Address repetitively flooded structures and compliance with the National Flood Insurance Program
 - Document the community's current capabilities
 - Analyze a comprehensive range of mitigation actions
 - Identify and prioritize actions the City intends to implement to reduce risk
 - Define update and monitoring process
 - Formal review by State EMD and FEMA
 - Be adopted by the community



Local Mitigation Planning Policy Guide

FP 206-21-0002

Released April 19, 2022, Effective April 19, 2023

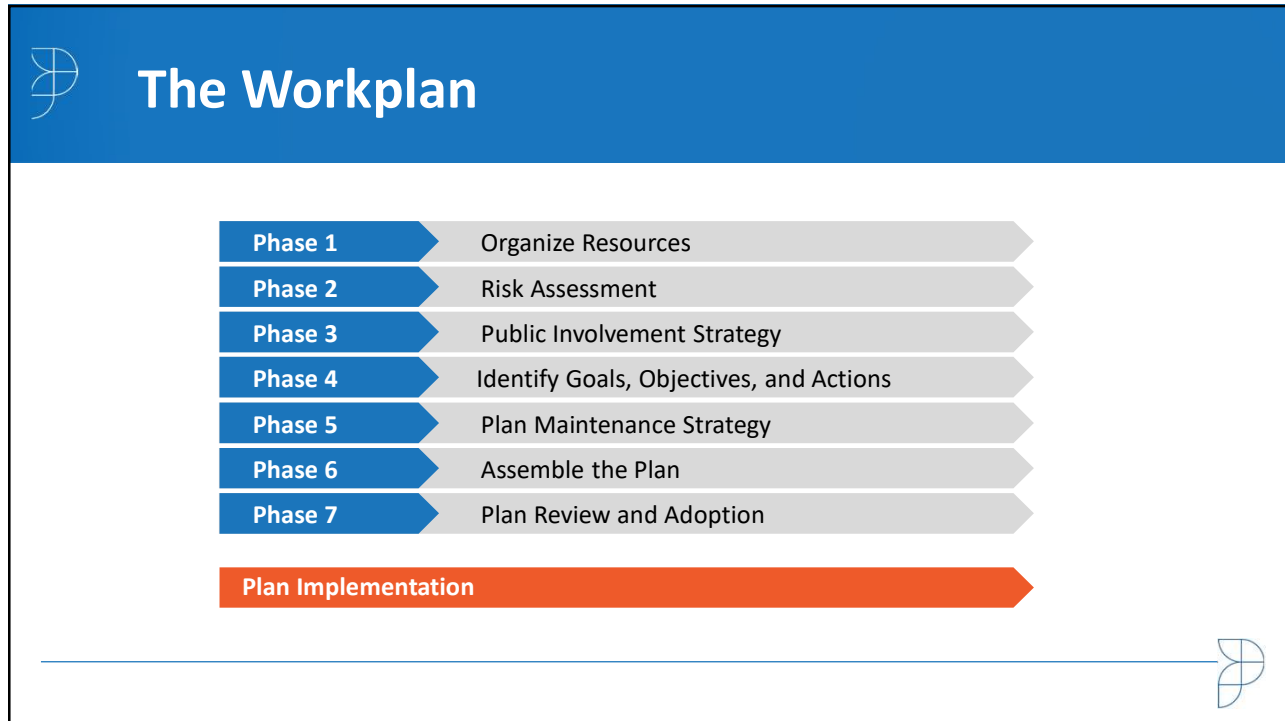
OMB Collection #1660-0062



FEMA



18



19

Phase 2 Risk Assessment

- Define natural hazards of concern
- Plan risk comparison:

Plan	Earthquake	Landslide	Severe Weather	Flood	Avalanche	Dam Failure	Tsunami/Seiche	Volcano	Wildfire	Drought
WA Enhanced HMP 2023	✓	✓	✓	✓		Not rated				
King County 2020	✓					Not rated	Not rated			Not included
Bellevue Annex 2009	✓	✓	✓	✓	X	✓	X	X	✓	✓

20



Phase 4 Goals, Objectives, Capabilities, Actions

- Identify a vision, goals, and objectives
- Core capability assessment
 - Planning
 - Technical
 - Financial
 - Education and Outreach
- Evaluate mitigation alternatives
- Define and prioritize the mitigation action plan

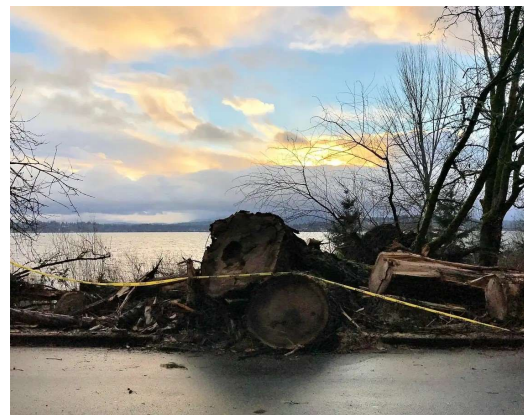


23



Phase 5 Plan Maintenance Strategy

- HMPs expire 5-years after FEMA approval.
- The strategy defines how you will keep the plan current, evaluate plan success, and plan for future updates.



In 2019, multiple roads in Bellevue were closed following a severe high wind event.
Source: Patch



24



Phase 6 and 7 Write Plan and Adopt

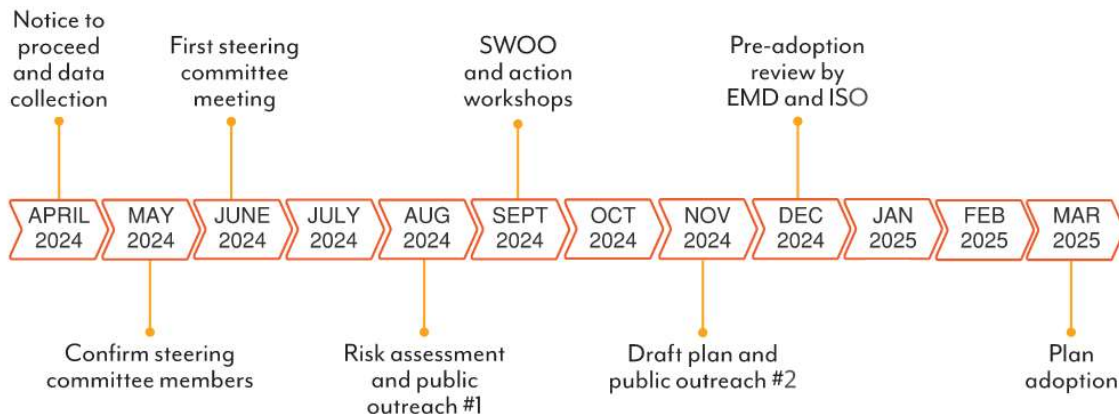
- Plan approval process:
 1. Two week public comment period
 2. SEPA review (optional)
 3. Public meeting
 4. Send plan to EMD for review (approx. 1 month)
 5. EMD sends plan to FEMA for review (up to 45 days)
 6. FEMA will issue Approval Pending Adoption (APA) or return for modifications
 7. After APA, City adopts plan by resolution



25



Timeline (subject to change)



26



27

The HMP Steering Committee

- Will operate under a set of ground rules
- Will participate in the public involvement strategy
- Will act as their department representative
- Will meet 5-6 times for a minimum of two hours per meeting
- Will oversee plan development

28



HMP Steering Committee

- Includes representation from all city departments
- Multidisciplined representation:
 - City departments
 - Stakeholders (business, academia, government)
 - Emergency Management
 - Community based organizations
- Will meet regularly during plan development



29



HMP Steering Committee Members

Role

- ✓ Guide the Core Planning Team through the City of Bellevue Hazard Mitigation Plan (HMP) development process
- ✓ Represent your department/agency in the planning process to create city-wide collaboration



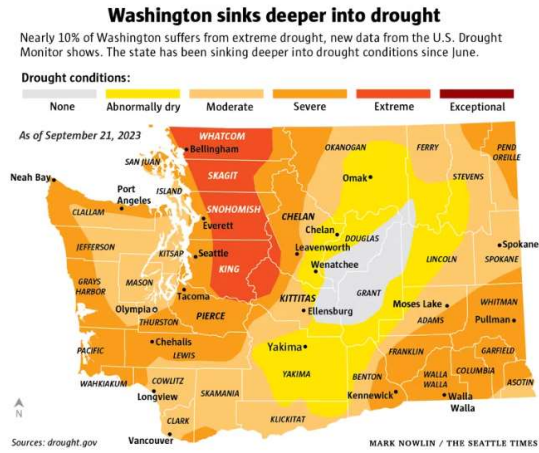
30



HMP Steering Committee Members

Responsibility

- ✓ Participate in meeting discussions
- ✓ Attend meetings in-person
- ✓ Notify chair if you or your alternate is unable to attend
- ✓ Keep your department updated and involved in the process



31



Next Steps

32



Next Steps

- Define hazards of concern
- Begin Steering Committee meetings
- Mine data for risk assessment (in process)
- Define vision statement and goals



Following heavy rain and stiff winds more than 4,000 residents in the City of Bellevue were without power.
Source: City of Bellevue



33



Questions?



34