



Neighborhood News

December 2024



Making it through the storm

The late November windstorm, or “bomb cyclone,” left a lasting mark on our city and region. Many in our Bellevue community experienced power outages and saw significant damage.

We want to extend our heartfelt thanks to the incredible people who worked tirelessly through the night—restoring power, clearing streets, responding to emergencies and safeguarding the health and safety of our community. Your dedication and hard work were truly inspiring and made all the difference.

We also want to gratefully recognize our neighbors who stepped up during this challenging time. Whether you let us know about issues that needed attention or lent a helping hand to someone nearby, your generosity and care are what make Bellevue such a remarkable place to call home.

If you have questions or concerns about the ongoing recovery efforts, please don't hesitate to email us at NeighborhoodOutreach@bellevuewa.gov.



For alternate formats, interpreters, or reasonable modification requests please phone at least 48 hours in advance 425-452-2735 (voice) or email mheilman@bellevuewa.gov. For complaints regarding modifications, contact the City of Bellevue ADA, Title VI, and Equal Opportunity Officer at ADATitleVI@bellevuewa.gov.

Subscribe to Neighborhood News electronically:
BellevueWA.gov/neighborhood-news

EMERGENCY PREPAREDNESS



MAKE A PLAN



BUILD A KIT



BE INFORMED



Winter weather emergency preparedness

Winter weather can strike unexpectedly, bringing heavy rains, high winds, power outages, dustings of snow and freezing temperatures. Preparing yourself and your household in advance is key to staying safe during these conditions.

Create a personal emergency kit. Having the right supplies can make all the difference in an emergency. Assemble a kit that includes non-perishable foods, bottled water, flashlights with extra batteries, first aid and essential medications, warm clothing and blankets and a portable phone charger or power bank. These are some of the basics, but make sure to customize your kit to your specific needs, such as adding supplies for infants, pets or medical conditions. And don't forget to add a few comfort items (we like adding chocolate bars!) and non-electronic entertainment.

Continued on next page

Preparing for power outages, especially longer-term ones. Think through what you'll eat if you're unable to use your cookstove, oven or microwave. What will you use for a light source? How will you stay connected with family and friends? If you have a generator, make sure it's placed outside and operating far enough away from any doors or windows to avoid carbon dioxide leaking into your residence.

Stay travel ready. Equip your vehicle or commuter backpack with a small-scale emergency kit that includes water, snacks, warm clothing and a flashlight.

Taking these proactive steps empowers you to handle winter emergencies confidently and effectively. By focusing on your personal preparedness, you'll be better equipped to protect yourself, your loved ones and your community.

Visit our Office of Emergency Management website (bellevuewa.gov/city-government/departments/fire/emergency-management/prepare-known-hazards) for more personal safety tips and emergency resources.



Snowflake Lane celebrates 20th year in Downtown Bellevue!

Nov. 29 – Dec. 24, nightly at 7 p.m.

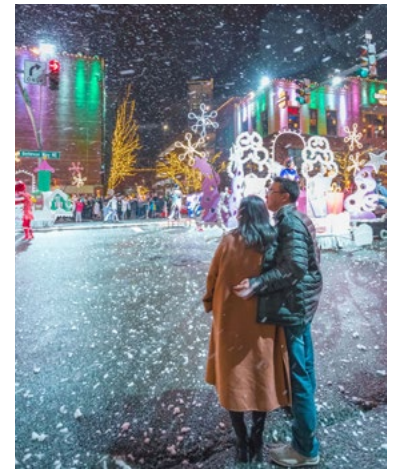
More information:

bellevuecollection.com/snowflakelane/

The Snowflake Lane parade takes place on Bellevue Way, from NE 4th Street to NE 8th Street, from Lincoln Square and Bellevue Square.

Parking is free at Bellevue Square, Lincoln Square and Bellevue Place. We recommend parking at Bellevue Place under the Hyatt Regency Bellevue, accessible via NE 10th Street.

We recommend attending early in the season on weeknights (Monday – Thursday) to get the best spot, as most visitors come during weekends. If you're planning to attend Fridays through Sundays, we recommend arriving at least one hour before the show begins and allowing extra time to find parking.



Bellevue Downtown Ice Rink presented by Symetra

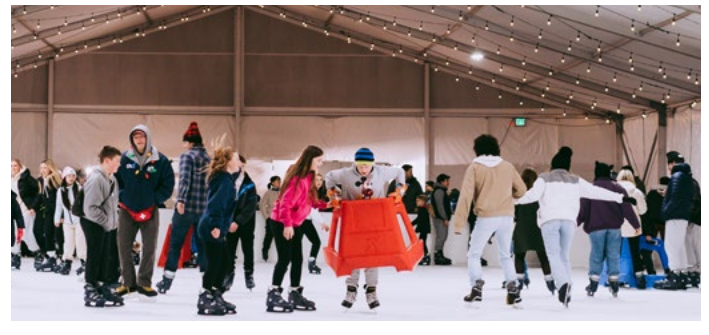
Nov. 15 – Jan. 12

At Bellevue Downtown Park

bellevueicerink.com

The region's largest ice-skating experience returns for its 27th year to Bellevue Downtown Park, boasting over 9,000 square feet of real ice in a fully covered, open-air venue. Join us for a season of festive fun featuring free skate lessons courtesy of Microsoft, themed skate nights, on-site concessions and more.

Whether you're a seasoned skater or a novice eager to learn, get ready to bundle up for an unforgettable time on the ice!





KidsQuest Gingerbread Workshops kick off the holiday season!

Community tradition returns for its 19th year to delight children, friends, and families of all ages! Additional information can be found at kidsquestmuseum.org/programs/gingerbread-events/ or by contacting info@kidsquestmuseum.org.

Gingerbread Workshops

Nov. 29-30, at the Hyatt Regency Bellevue

The entire community is invited to create, build, celebrate and make memories at this sensational holiday event. KidsQuest provides the perfect environment and all you need to create one-of-a-kind gingerbread house masterpieces. This event is great fun for kids and adults, alike! There are multiple workshops offered, each with their own special twist. Pre-registration is required, and space is limited. Don't miss out!

Ballerina Gingerbread Workshops

Nov. 29, 1-3 p.m. and 5-7 p.m.

The workshop experience is enhanced with performances by Bennyroyce Dance Company to dazzle and delight.

Gingerbread After Dark, ages 21+ Friday, Nov. 29, 5-7 p.m.

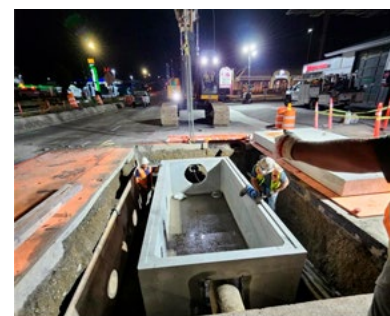
Introducing a new adults-only opportunity. You will be welcomed with a glass of champagne as you get your creative juices flowing in a special seating area complete with a private candy buffet.

Classic Gingerbread Workshops

Nov. 30, 10 a.m.-Noon and 2-4 p.m.

Visit and Shop Factoria Day

Join the City of Bellevue and celebrate the completion of the stormwater improvement project on Factoria Boulevard!



Community members are invited to hear remarks from city leadership and the project team, while discovering local businesses.

Saturday, Dec. 7 | 11 a.m.-3 p.m.

Factoria Village parking lot, look for the white tent

About the Project

The Factoria Boulevard Stormwater Conveyance Improvements project reduces risks of flooding during heavy storms by improving the stormwater infrastructure. The city replaced a segment of stormwater pipe with a larger concrete storm box conveyance system under the northbound lanes of Factoria Boulevard Southeast, next to the Factoria Village commercial area. This conveyance system continues to drain into Richards Creek, which had channel improvements as part of the project.

Get more details on the project and Visit and Shop Factoria Day at BellevueWA.gov/factoria-stormwater-project.

Northeast Bellevue residents choose two NEP projects

Thanks to all Northeast Bellevue neighbors who participated in the Neighborhood Enhancement Program (NEP) over the past several months!



NEP is a city-funded capital improvements program that allows residents to propose and select small-scale projects that improve quality of life and enhance the character of their neighborhood area.

The program kicked off in April, with the city receiving 101 resident-identified project ideas

Continued on next page

Continued from previous page

for how to spend the \$366,000 allocated for the Northeast Bellevue Neighborhood Area. City staff reviewed each of the submitted



project ideas for accessibility, feasibility, cost, timeline and maintainability. In September, seven projects were presented for consideration, with two projects being chosen by residents to receive funding.

1. Sidewalk construction on 173rd Avenue NE, from Northup Way to NE 15th Place
2. Ardmore Park Invasive Vegetation Removal

The current overall \$7 million NEP allocation has been distributed among the City's 14 Neighborhood Areas, based on the number of households in each area. NEP rotates through the 14 Neighborhood Areas at a rate of two Neighborhood Areas per year.

In 2025, the seven-year NEP CIP cycle will have funding available to the Bridle Trails and Northwest Bellevue Neighborhood Areas. Bridle Trails planning will kick off in late January with a virtual public meeting. Look for NEP to come to Northwest Bellevue in late March. To find out which NEP Neighborhood Area you call home, please visit BellevueWA.gov/nep.

NEP Project Spotlight

The NEP Woodridge SE 8th Gateway Entrance Landscaping project has completed, bringing enhanced plantings, updated irrigation and



maintenance efficiencies to the planter beds along 121st SE.

Residents and visitors will benefit from improved sightlines throughout and can enjoy new landscaping with year-round interest and environmental benefit. The City of Bellevue's Community Development and Parks Depts are pleased to have partnered with residents of the Woodridge neighborhood to support this project.

Bellevue Essentials 2024 Graduation

Thursday, Dec. 12, 7 p.m.

Bellevue City Hall, Council Chambers

You are invited to honor the 2024 Bellevue Essentials Class as they take



their next steps as community leaders. The class is currently completing a 12-week series, which educates members on the city's systems and ways to connect and serve.

The event will feature keynote speaker is David Bowling, CEO of Eastside Foundation, speaking on the "The Power of Collaboration." This year's activities were supported through a generous grant to Bellevue Essentials from Amazon.

Please let us know you're planning to attend! Festive Dessert Reception reservations: neighborhoodoutreach@bellevuewa.gov



2024 Bellevue Essentials graduates:

Saghar Amini, Bill Berryman, Sandra Martinez, Naren Briar, David Cagle, Shelley Cervantes, Sophie Demandolx, Nick Elder, Deborah Grover, Tony Guidotti, Chris Hays, Preeti Jain, Andrew Jiang, Ben Kelsey, David Kim, Srivaishnavi Korukanti, Nikhil Krishna, Shiao-Ling Lai, Miwa Leick, Yun Liu, Laura Mathers, Kavi Mathur, Denny Meadows, Jack Ming, Kristin Neibert, Olga Perelman, Nicole Price, Elaine Richlie, William Schneider, Julia Schwarz, Nishama Siriwardena, Samantha Soldner, Ethan Teng, Valentina Vaneeva

For some, the holidays can be difficult

The holiday season often conjures images of family gathering, fun and great memories. However, for many – especially older adults – the holidays can be a time of loneliness and sadness.



For some elderly folks, loneliness can be made worse by memories of loved ones who are no longer with them or may live far away. Older adults may also experience a sense of loss as they age and suffer from health ailments. These feelings are very real and can resemble the grief that typically comes from losing a loved one.

What you can do to beat the holiday blues...

Get out and about

Ask people you know and your family for help getting out and about!

Volunteer

Helping others is a great way to forget your own troubles. The City of Bellevue has many opportunities for volunteering: BellevueWA.gov/volunteering

Drink responsibly

It can be easy to overindulge around the holidays, but excessive drinking can make you feel more depressed. The recommended limit is no more than 1 drink on a given day or seven drinks in a week. If you have health problems or take certain medications, you may need to drink less or not at all.

Accept your feelings

There's nothing wrong with not feeling jolly, as many people experience sadness during the holidays. Be kind to yourself and seek support. Don't underestimate the power of friends, family, mentors, and neighbors. Talking about your feelings can help you understand why you feel the way you do and offer support in tough times.

How you can help someone older in your life...

Include them

Invite them out and to gatherings. Consider their needs, including transportation or special dietary requirements.

Lend a hand

Offer to help with cleaning, shopping, cooking and other preparations, such as decorating their homes for gatherings.

Be a good listener

Be a supportive listener and acknowledge difficult feelings, including a sense of loss if family or friends have passed or moved away.

Encourage them to talk with their healthcare provider

Often, older adults don't realize they are depressed. If you suspect depression, let the person know that depression is a common, treatable medical disorder and not something to be ashamed of.

Making a concerted effort to stay active and connected can help you regain the cheer of holidays!





Bringing joy to the holidays

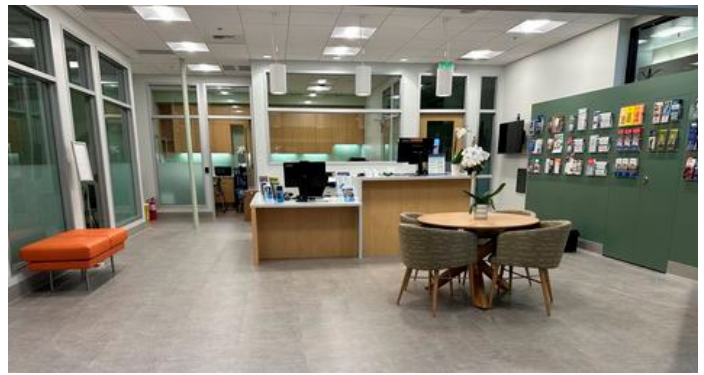
This holiday season, the Bellevue Fire Department is happy to support the partnership between the Bellevue Firefighters Community Support Foundation (BFCSF) and Jubilee Reach for the Jubilee Elves Program, spreading joy to children and families in need.

Working in collaboration with the Bellevue School District, Jubilee REACH has invited 1,000 children, including 400 experiencing homelessness, to attend a special holiday event on Dec. 12. Each child will receive a personalized gift, a pair of socks, a \$25 gift card to a store of their choice, a jacket in their size and favorite color, and an opportunity to shop at the Toy Store, selecting a toy for themselves and one to gift to a loved one.

How can you help? Community members can make a difference by supporting this heartwarming event in two simple ways:

1. Drop off a new, unwrapped toy at any Bellevue fire station!
2. Sponsor a child through a General Gift Package at jubileereach.org/elves.

Together, we can help brighten the holidays for these children and remind them they are cherished members of our community. Thank you for your generosity and support!



New at Mini City Hall!

Free financial coaching and career advancement program

Bellevue Mini City Hall is excited to announce a new partnership to assist residents with financial services and explore resources for job seekers and entrepreneurs. These specialized mentoring and coaching programs include support with money management, career advancement, assistance starting a business, as well as help with applications for public benefits. Programs are free, and assistance is provided on an individual, one-on-one basis.

Bellevue is home to several multinational technology companies, which has resulted in a vibrant and diverse community. Providing resources and opportunities to this talented community will lead to an enhanced quality of life and a better city.

Services will be provided by Mini City Hall's new partner PIM Savvy, which is an organization that specializes in community outreach, education and marketing communications. Their programs include:

- Free federal tax prep for qualifying taxpayers in King and Snohomish Counties.
- Help applying for public benefits through WA Connection (food, cash and childcare aid)
- Free in person or virtual help with applications for Working Families Tax Credit (WFTC)
- Free personalized mentoring to support development of a business plan, as well as help and guidance for entrepreneurs as they navigate establishing their business.
- Free one-on-one coaching to improve credit and create a budget and plan to pay off debt.



- Assistance for residents in job searches, job applications and resume and cover letter development.

PIM Savvy is at Mini City Hall on a **bi-weekly** basis. You can schedule appointments daily from 11 a.m.–3 p.m. Services are provided in English, Spanish and Mandarin. For more information, please contact Mini City Hall, at 425-452-2800 or minich@bellevuewa.gov. Mini City Hall is in the Crossroads mall at 15600 NE 8th St, Suite E1, Bellevue and open Monday to Saturday, 10 a.m.-6 p.m.

Bellevue's Mini City Hall has been serving the community for over three decades, specializing in personalized customer service provided by friendly staff in multiple languages. Many local nonprofit organizations and programs also hold office hours at this city site. Mini City Hall also processes city water bill payments, sells pet licenses and offers information and referrals, including Medicare, ESL classes, affordable housing/shelter opportunities, legal and financial services, family counseling, childcare, employment resources, senior services and resources for people with disabilities. Staff at Mini City Hall offer help in English, Spanish, Cantonese, Mandarin, Russian, Somali, Hindi and Telugu. For more information, please visit BellevueWA.gov/mini-city-hall.



Bellevue launches Affordable Housing Strategy update

Housing that meets the needs of people at all stages of life is a key component of thriving cities. Like many major metropolitan areas, the Puget Sound's housing supply has not kept pace with the region's growing demand. Over the past several

decades, underproduction has strained local housing markets, leaving visible impacts in rising rents and housing costs and caused a greater need for housing that is affordable for low- and middle-income households.

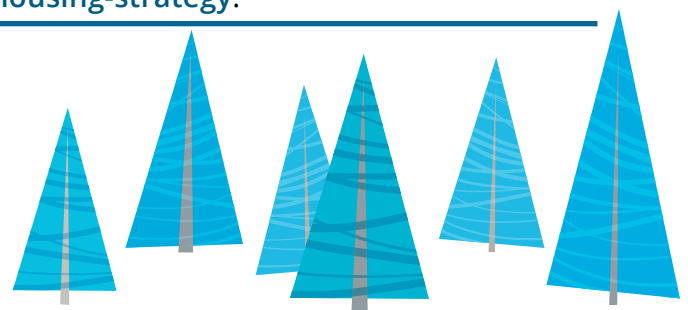
Recognizing this continued need for diverse and affordable housing, the Bellevue City Council recently launched an update to the city's Affordable Housing Strategy: BellevueWA.gov/city-government/departments/community-development/housing-affordability/affordable-housing-strategy.

Adopted in 2017, the Affordable Housing Strategy included five overarching strategies and 21 actions to increase affordable housing opportunities in Bellevue. Specific actions within strategy areas addressed housing stability, housing supply and income-restricted affordable housing. Over the past seven years, implementing these actions has helped the city produce or preserve its goal of 2,500 affordable units citywide.

The 2025 Affordable Housing Strategy update launched at the Nov. 12 City Council meeting set a new goal of producing or preserving an additional 5,700 affordable housing units by 2036. Achieving this target will almost double Bellevue's total number of affordable homes.

The updated affordable housing target and strategy will focus on housing opportunities for residents earning up to 80% of the area median income, helping the city keep pace with expected growth projections established in the recently adopted 2024-2044 Bellevue Comprehensive Plan update. Work on the Affordable Housing Strategy update will occur over the next year and include a range of community engagement opportunities.

To learn about the 2024 Affordable Housing Strategy update, or to stay informed or provide input, visit our online engagement hub: EngagingBellevue.com/2025-affordable-housing-strategy.



Learn about middle housing code updates

With the adoption of the 2024-2044 Comprehensive Plan update, the city has started a project to update codes to accommodate and encourage development and preservation of middle housing in Bellevue.

The term “middle housing” refers to types of housing that fall between single family and midrise-scale multifamily buildings. This includes duplexes, triplexes, fourplexes, fiveplexes, and sixplexes, as well as cottages, courtyard buildings, and townhomes. This work builds on the extensive public outreach conducted during the Comprehensive Plan update process on middle housing and advances many of the city’s housing and land use goals and policies.

Community members are invited to attend upcoming public information sessions on Dec. 5 and 9, to learn more about what to expect from these changes. Planning staff will give an overview of the project and share community feedback that has already been received, as well as the current approach to the code update. Staff will also answer questions and gather more feedback. The public can provide input on the potential to increase the amount of housing allowed beyond what is required by the state in certain areas of the city.

An online questionnaire and mapping exercise will be available soon and will remain open through the end of the year.

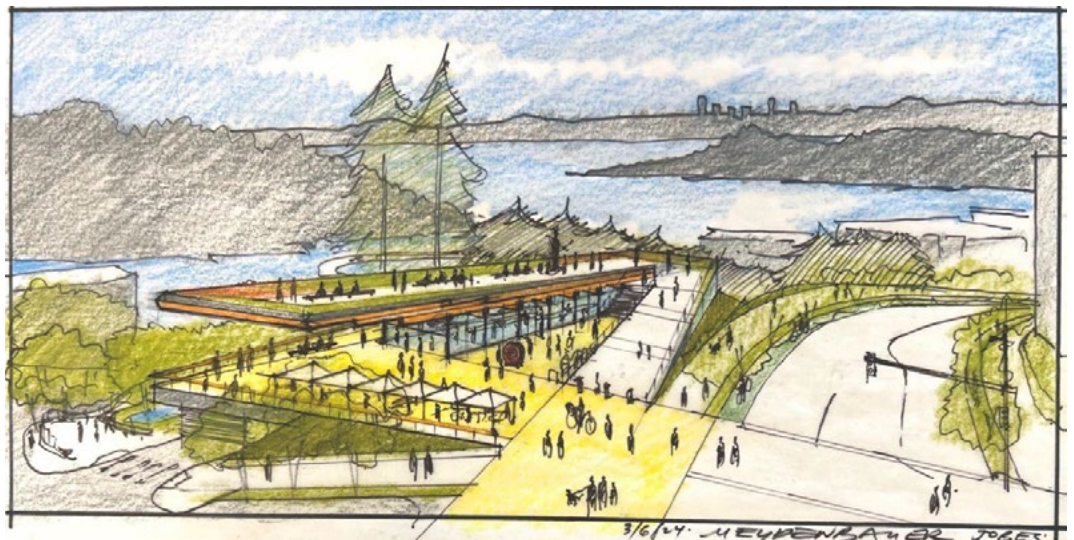
Community members who would like to attend one of the two events are encouraged to register online at [Bellevue-middle-housing-info-sessions.eventbrite.com](https://www.eventbrite.com).

To learn more about the project, please visit the project website at bellevuewa.gov/middle-housing-code.

Provide feedback on the latest design for Meydenbauer Bay Park’s expansion!

Meydenbauer Bay Park in the summer means paddling in the water, golden sunsets and picnicking at the beach. While we might not be laying out in the park as we head into the colder months, you can still enjoy and engage with Meydenbauer Bay Park by sharing your feedback on designs for the expansion of the park. Plus, you could win free ice-skating tickets for you and a guest courtesy of Downtown Bellevue Ice Rink!

Over the past year and a half, we asked the community about their priorities for Meydenbauer Bay Park’s future. During that outreach, we heard a strong desire for improved pedestrian and water access, parking and a variety of park amenities. The Meydenbauer Bay Park team has been busy at work, studying what opportunities lie ahead, and updating designs. Now, we want to hear from you about the proposed changes to ensure that your priorities are reflected.



Design sketch of a proposed pavilion at Main Street and 100th Ave SE with views of Meydenbauer Bay and the Cascades. Courtesy of Berger Partnership and Miller Hull Partnership.

To learn more about the project, and take the survey, please visit engagingbellevue.com/meydenbauer-bay-park-expansion.

The survey will be available through December 15. Survey respondents can opt in to a raffle to win free ice skating passes at the Bellevue Downtown Ice Rink. Restrictions apply.

Take action for safer roads by signing the new Vision Zero pledge

For a second year, Bellevue City Council proclaimed Sunday, Nov. 17, World Day of Remembrance for Road Traffic Victims, which honors people who have died in or been impacted by collisions. As part of this recognition, the Transportation Department has released a new Vision Zero pledge for the Bellevue community to take part in. Those signing the pledge commit to driving safely and avoiding high-risk behaviors like distracted driving.

Since the council launched Vision Zero in 2015, the city has taken steps to make Bellevue streets safer. Recent changes include:

- Upgrading crosswalks with leading pedestrian intervals to give people walking a head start and more time to cross safely
- Completing school zone road safety assessments in several neighborhoods and making improvements based on them
- Passing an ordinance that will lower the speed limit on local streets in neighborhoods to 20 mph.

Despite those measures and more, over the past 10 years, someone has been killed or seriously injured every 15 days on Bellevue streets. The Vision Zero pledge focuses on five driving behaviors that contribute to 71% of all fatal and serious injury crashes on Bellevue streets: driver failing to yield to a non-motorist, inattention or distracted driving, not granting right-of-way to a vehicle, impairment by alcohol or drugs and speeding. To learn more about Vision Zero and add your name to those who are committing to drive safely, visit BellevueWA.gov/visionzeropledge



52 volunteers helped clean SE 148th Street through Keep Bellevue Beautiful's final 2024 Signature Streets event. Thank you, volunteers!

Visit the Keep Bellevue Beautiful page for more information at BellevueWA.gov/keepbellevuebeautiful

Boards and Commissions Meetings

Stay updated on meetings and cancellations:
BellevueWA.gov

All meetings are conducted at City Hall unless otherwise noted. Agendas are subject to change. If a holiday occurs on a Monday, please check the updated calendar. Agendas can be downloaded from the city's web pages listed below. Meeting alerts are available through subscribing to the City's Special Meeting Notices page.
BellevueWA.gov/special-meetings

Bellevue Diversity Advisory Network
 (6 p.m., Bellevue City Hall) Last Tuesday of each month
BellevueWA.gov/city-government/bdan

Arts Commission (4:30 p.m., 1E-113)
 First Wednesday of each month
BellevueWA.gov/arts-commission

Environmental Services Commission
 (6:30 p.m., 1E-113) First Thursday of each month
BellevueWA.gov/environmental-commission

Planning Commission (6:30 p.m., 1E-113)
 Second and fourth Wednesday of each month
BellevueWA.gov/cdplanning-commission

Transportation Commission (6:30 p.m., 1E-113)
 Second Thursday of each month with fourth Thursday as needed.
BellevueWA.gov/planning-transportation-commission

Human Services Commission (6 p.m., 1E-113)
 First and third Monday of each month
BellevueWA.gov/human-services-commission

LEOFF 1 Disability Board (6 p.m., Room 1E-118)
 First Wednesday of each month
BellevueWA.gov/leoff-1-disability-board

Library Board (5p.m., Lake Hills, Bellevue or Newport Way Library) Second Wednesday of each month.
BellevueWA.gov/library-board

Parks & Community Services Board
 (6 p.m., 1E-113) Third Wednesday of each month
BellevueWA.gov/pcs-services-board

The Bellevue Network on Aging (BNOA)
 8:30 a.m., North Bellevue Community Center 4063 148th Ave NE, Bellevue) First Thursday of each month
BellevueWA.gov/bnoa

Special Events Committee (8:30 a.m., 1E-112)
 Second Thursday of each month
BellevueWA.gov/events

Youth Link Board (6 p.m., 1E-120) Second and fourth Wednesday of each month
BellevueWA.gov/youth-link-board

Bellevue's Neighborhood Services Division offers a variety of programs and partnerships for residents and community members.

To learn more about involvement opportunities and programs to enhance neighborhoods, please visit our website at: BellevueWA.gov/neighborhoods or call 425-452-6836 or email: neighborhoodoutreach@bellevuewa.gov.

To subscribe to this newsletter, visit:
BellevueWA.gov/neighborhood-news

City Council Bellevue.Legistar.com/Calendar.aspx

Day	Scheduled Meeting(s)	Location	Public Comment Opportunity
First four Tuesdays of each Month, except August and December	6 p.m. Regular Meeting	Council Chamber Bellevue TV channel 21 and BT YouTube channel youtube.com/user/BellevueWashington	Emails to Council are accepted at council@bellevuewa.gov at any time. Further opportunities for public comment are published on each Council agenda and can be found at bellevue.legistar.com/calendar.aspx
August – first Tuesday only			
December – first and second Tuesday only			