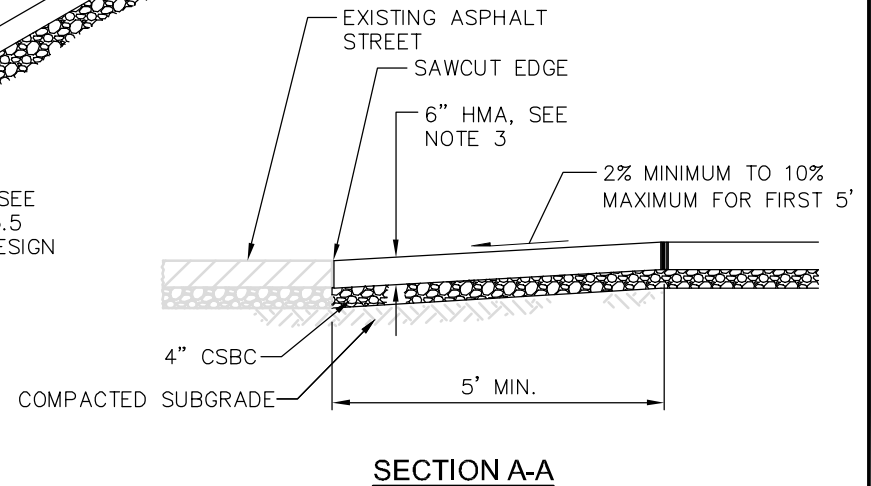
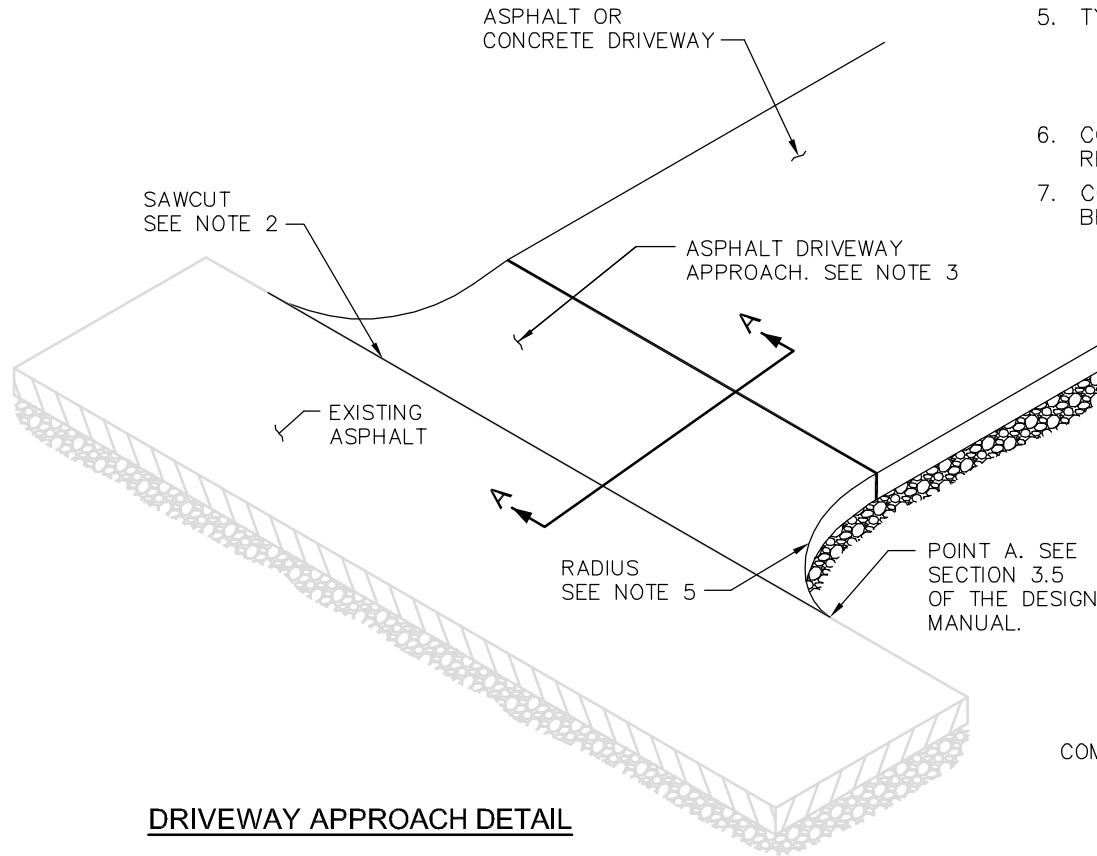


NOTES:

1. SEE SECTION 3.5 OF THE DESIGN MANUAL FOR DRIVEWAY WIDTH, DESIGN DETAILS, AND GRADING REQUIREMENTS.
2. AT SAWCUT, TACK COAT EXISTING SURFACES WITH CSS-1 AND SEAL IN ACCORDANCE WITH WSDOT STD. SPEC. SECTION 5-03.
3. DRIVEWAY APPROACH TO BE 6" TO 8" HMA CLASS ½" PG 58H-22 ASPHALT IN ONE OR TWO 2" LIFTS OVER 4" LIFT.
4. HOT MIX ASPHALT OR CONCRETE TO BE PLACED OVER COMPACTED SUBGRADE AND 4" OF CSBC COMPACTED TO 95%.
5. TYPICAL EDGE RADIUS:

COMMERCIAL	15'
RESIDENTIAL, ARTERIAL STREET	10'
RESIDENTIAL, LOCAL STREET	5'
6. CONCRETE DRIVEWAY WITHIN RIGHT-OF-WAY SHALL NOT CONTAIN REINFORCING STEEL.
7. CONCRETE DRIVEWAY WITHIN RIGHT-OF-WAY FINISH SHALL BE BRUSHED WITH A STIFF BRISTLED BRUSH PARALLEL TO THE CURB.



**DRIVEWAY APPROACH
WHERE NO CURB-GUTTER EXISTS**

DRAWING NUMBER	SW-190-1
SCALE	NONE
REVISION DATE	2/24
DEPARTMENT	TRANS